

**FLUORO ROOM #5 COVE LIGHTING CONTROL**  
(FLUORO ROOM 6 SIMILAR)

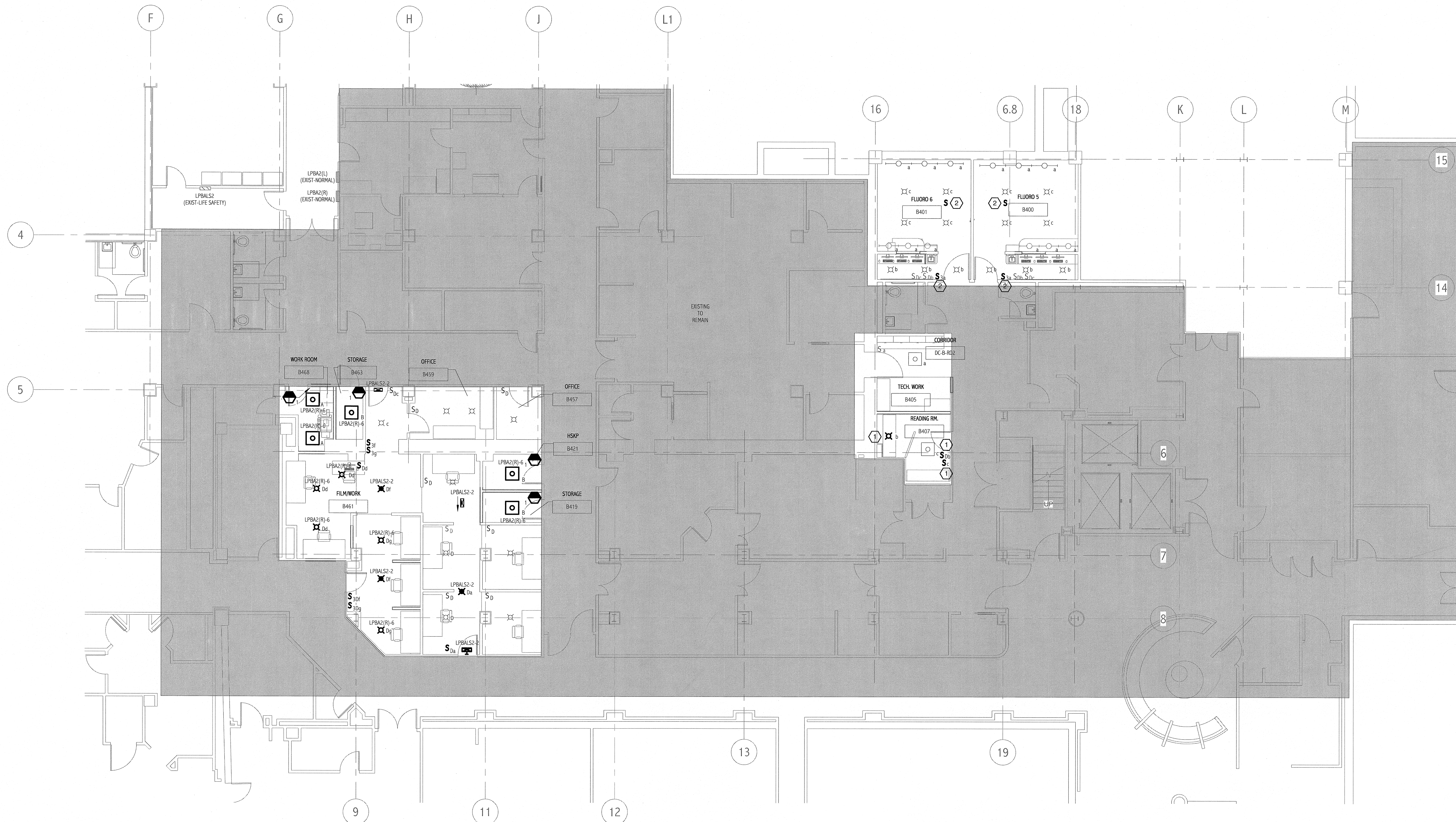
LIGHT FIXTURE SCHEDULE					
TYPE	DESCRIPTION	MFR	LAMPS	MOUNTING	NOTES
A	2x2 DIRECT/INDIRECT FLUORESCENT WITH CENTER PERFORATED SHIELD AND ELECTRONIC BALLAST. 120W	NEORAY "FENESTRA" 242-R-318-ETC-120-EB	3-17W T8	RECESSED GRID	
B	2x2 ACRYLIC FLUORESCENT WITH ELECTRONIC PROGRAMMED START BALLAST. 120W	METALUX 26C-317A-UNV-ERS1	3-17W T8	RECESSED GRID	
D	8" HORIZONTAL FLUORESCENT DOWNLIGHT WITH WHITE SELF FLANKED TRIM, LOW IRRIDECENT REFLECTOR AND ELECTRONIC DIMMING BALLAST. 120W	PORTFOLIO CB4021D42-8401L1-WF	1-42W TRIPLE TUBE	RECESSED	
E	LED, POLYCARBONATE EXIT SIGN WITH WHITE HOUSING AND RED LED LETTERS. 120V	SURE-LITES LPX6	LED	WALL, CEILING	

**NOTES:**

- SEE SHEET E-001 FOR LEGEND AND GENERAL NOTES.

**KEYED NOTES:**

- NEW LOCATION. SEE E101 FOR EXISTING LOCATION.
- REMOVE EXISTING SINGLE POLE SWITCH IN CONTROL ROOM THAT CONTROLS THE ASSOCIATED X-RAY ROOM COVE LIGHTING AND PROVIDE A 3-WAY SWITCH AND CONTROL RELAY. INTERFACE WITH THE FLUORO MACHINE SINGLE POLE SWITCH TO CONTROL THE ROOM'S COVE LIGHTING. PROVIDE WIRING BETWEEN THE SWITCHES, COVE LIGHTING AND CONTROL RELAY TO FACILITATE. REFER TO WIRING SCHEMATIC ON THIS SHEET.



**1 FLUORO BASEMENT LIGHTING PLAN**  
1/8" = 1'-0"

144 Fore Street, Box 618  
Portland, Maine 04104  
Tel: (207) 775-3846  
Fax: (207) 775-1070  
www.smrtinc.com

ARCHITECTURE  
ENGINEERING  
PLANNING  
INTERIOR DESIGN  
COMMISSIONING

**SMRT**

REV 10 08/24/10

PROJECT NORTH

**ISSUED FOR CONSTRUCTION**  
08.24.10

Bramhall Radiology  
FLUORO RENOVATIONS  
PORTLAND, ME

DATE	DESCRIPTION	REV
8.24.10	ISSUED FOR CONSTRUCTION	0

GRAPHIC SCALE:  
0" 1"

SCALE: As indicated

PROJECT MANAGER: DM  
 DRAWN BY: CBS  
 A/E OF RECORD: JPP  
 PROJECT NO: 09022-01  
 DATE: 8.24.10

SHEET TITLE:  
**FLUORO BASEMENT LIGHTING PLAN**

SHEET NO.  
EL 101