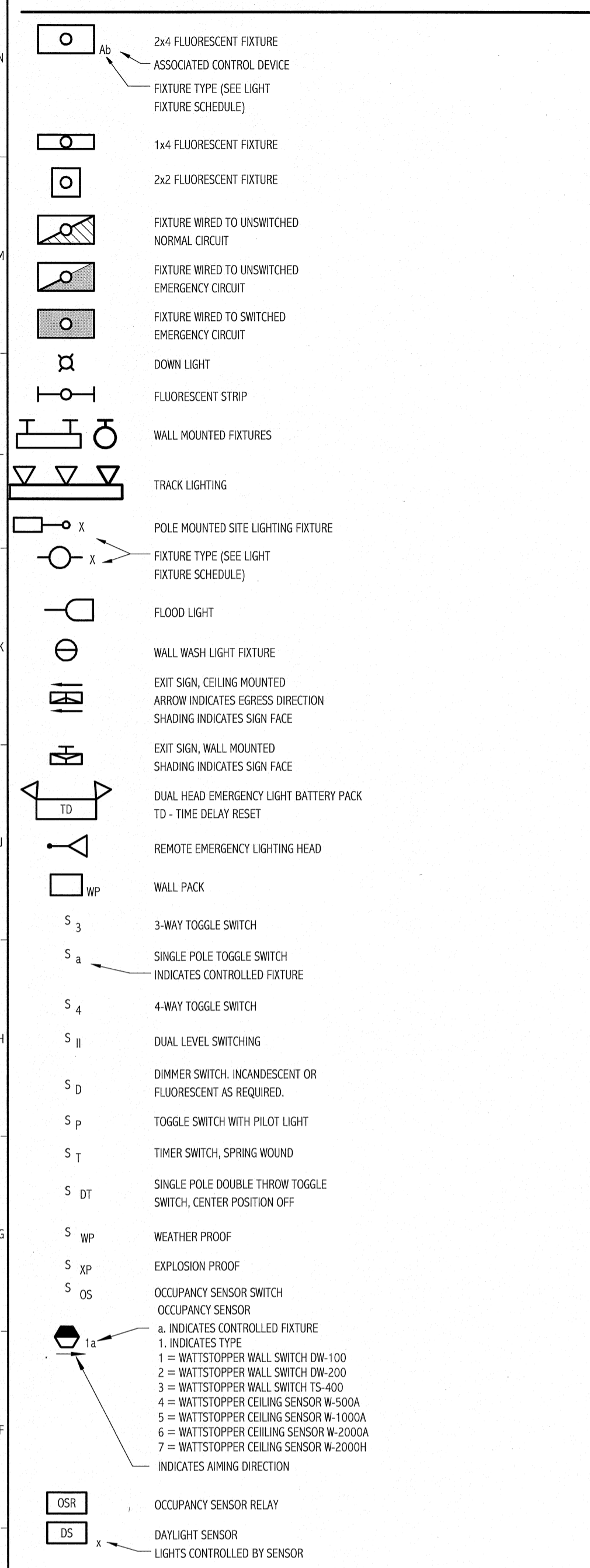
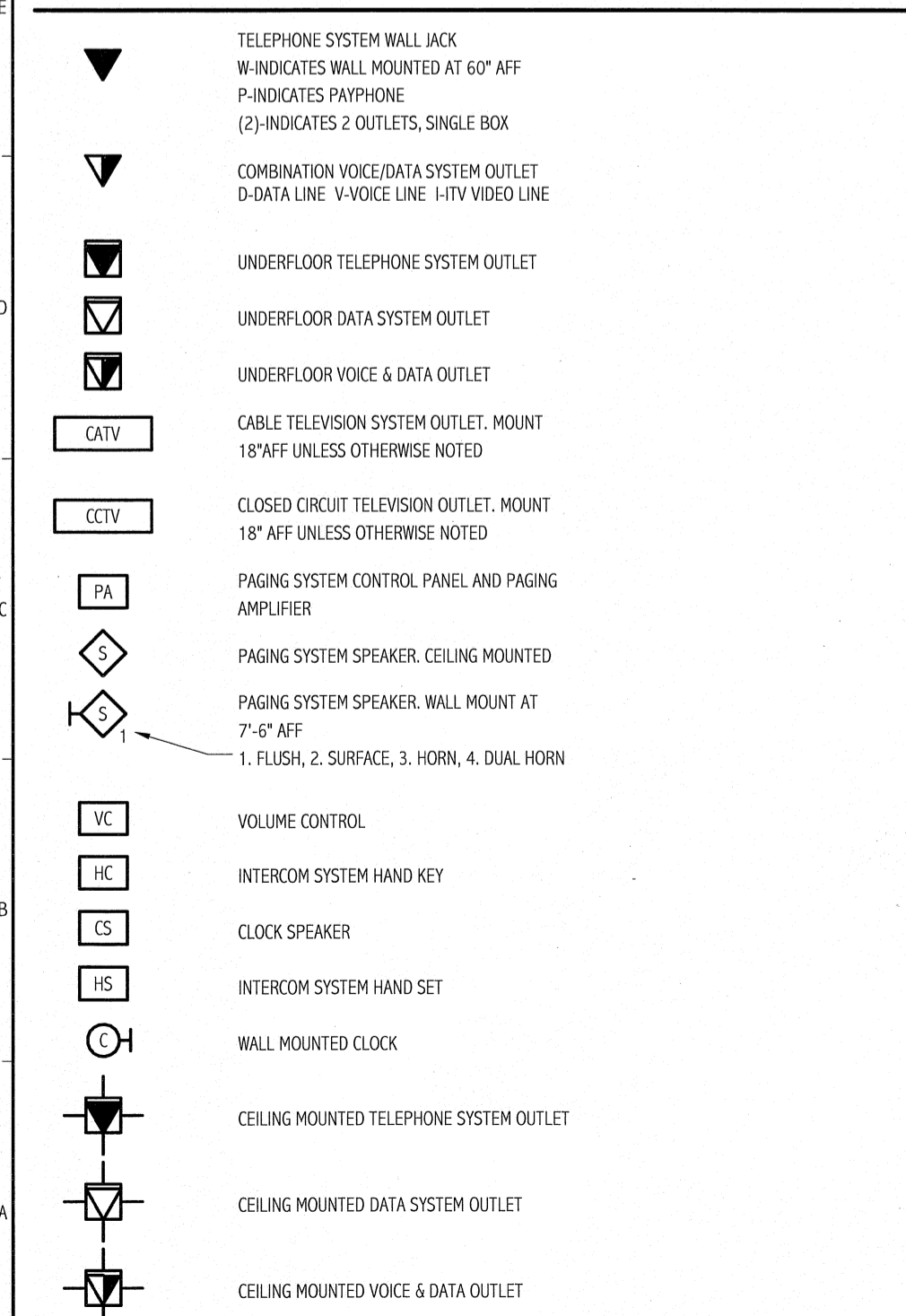


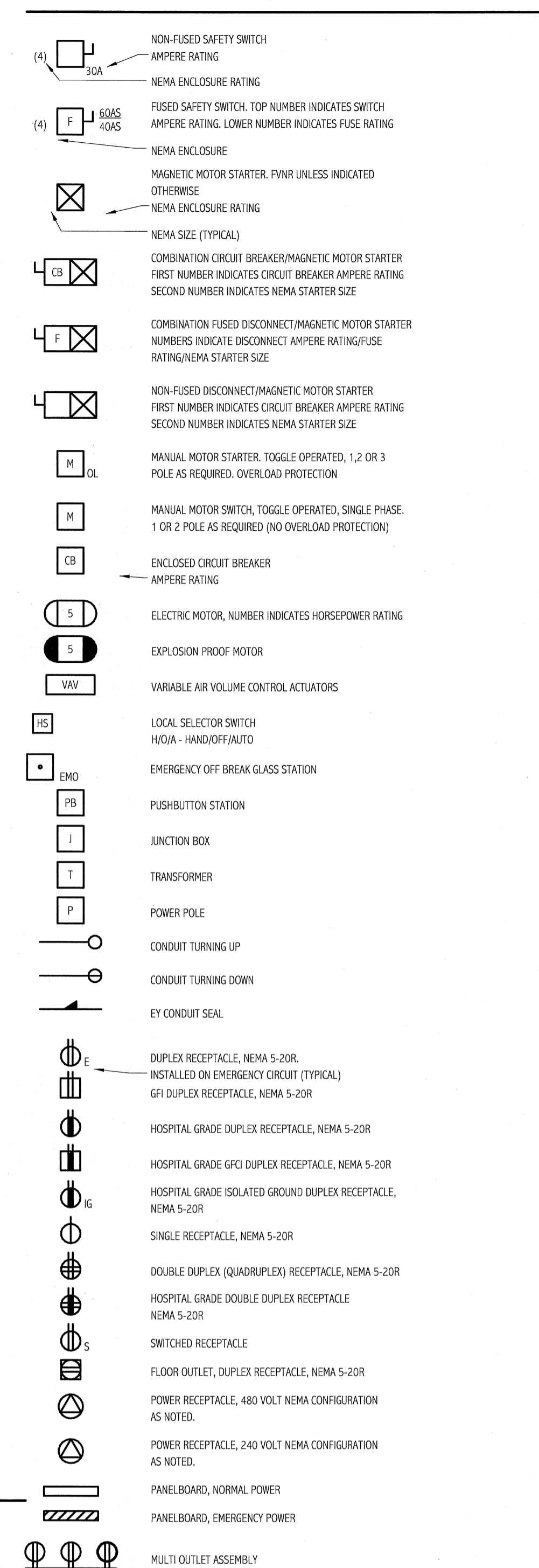
**LIGHTING**



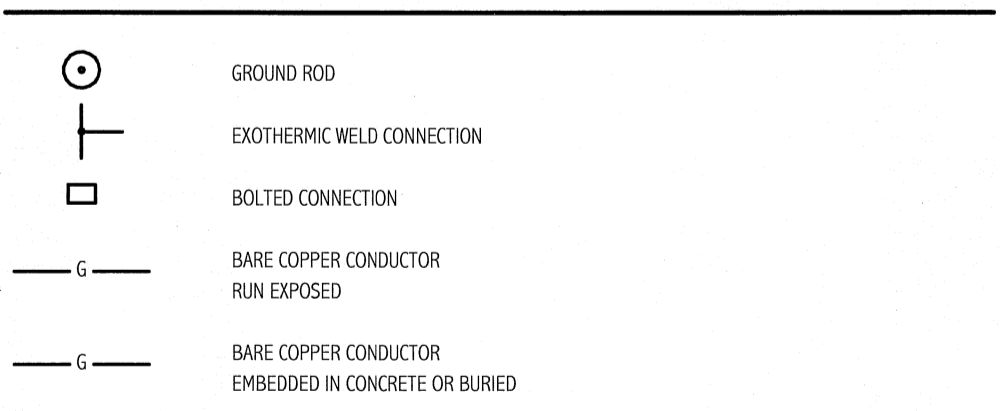
**COMMUNICATION & DATA SYSTEMS**



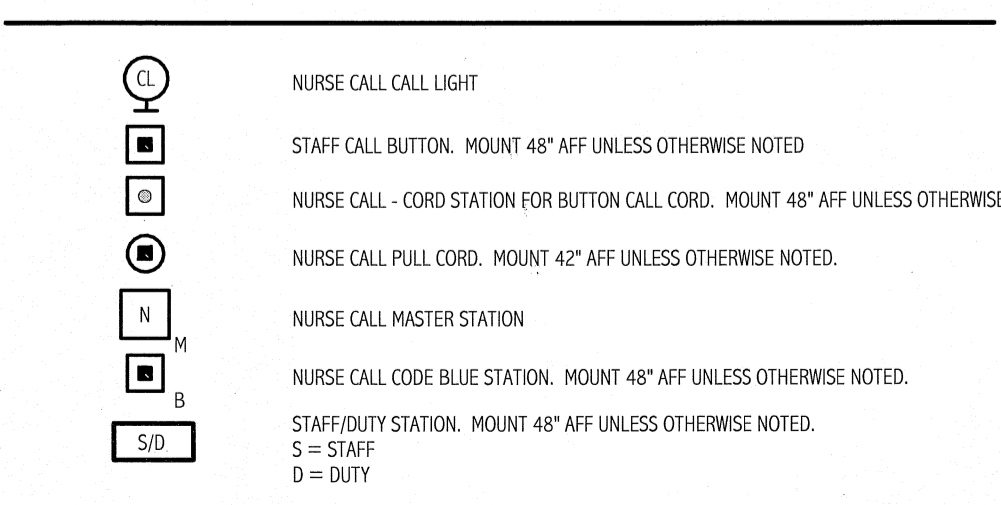
**POWER**



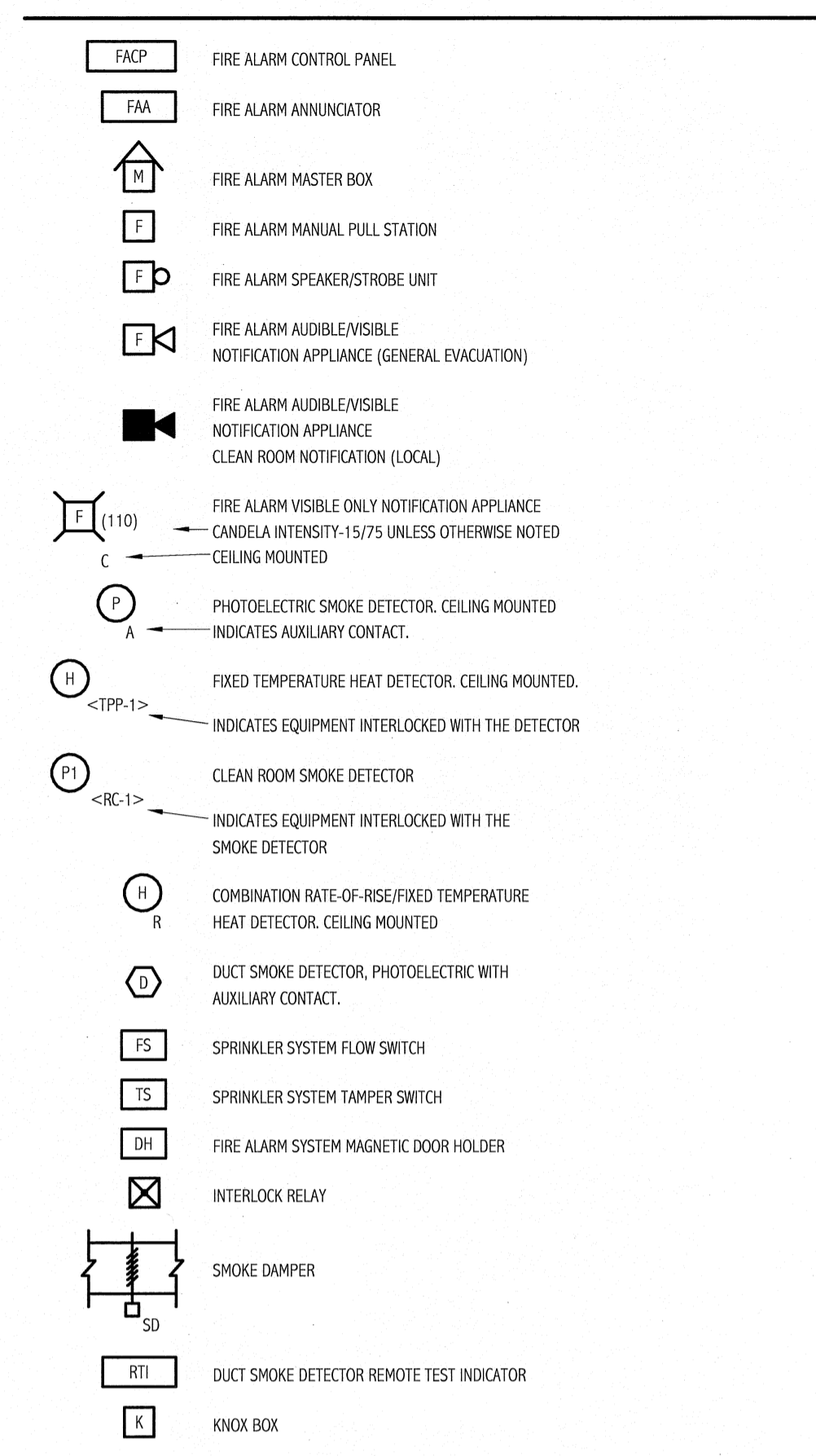
**GROUNDING**



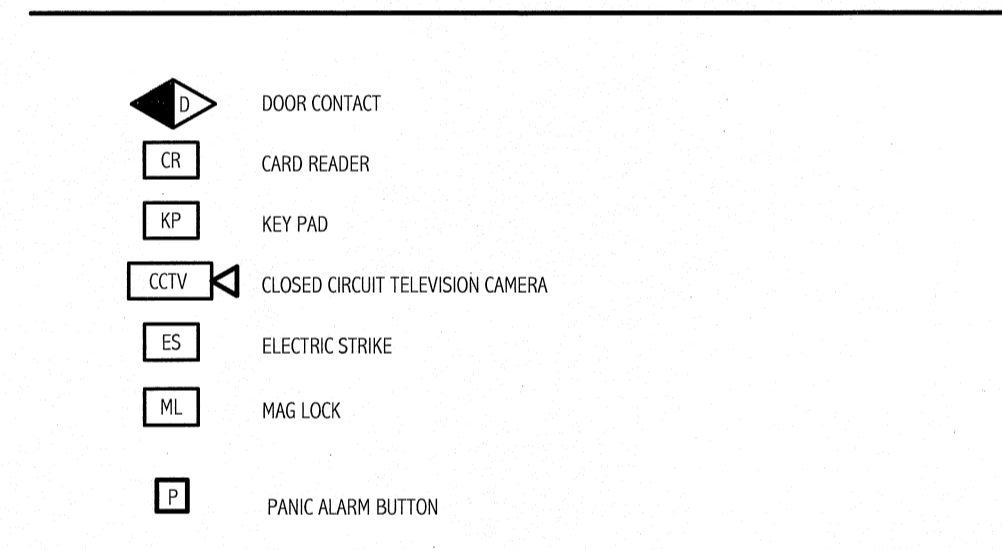
**NURSE CALL SYSTEM**



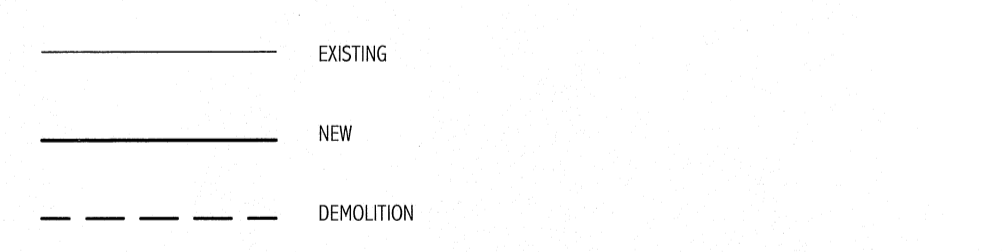
**FIRE ALARM**



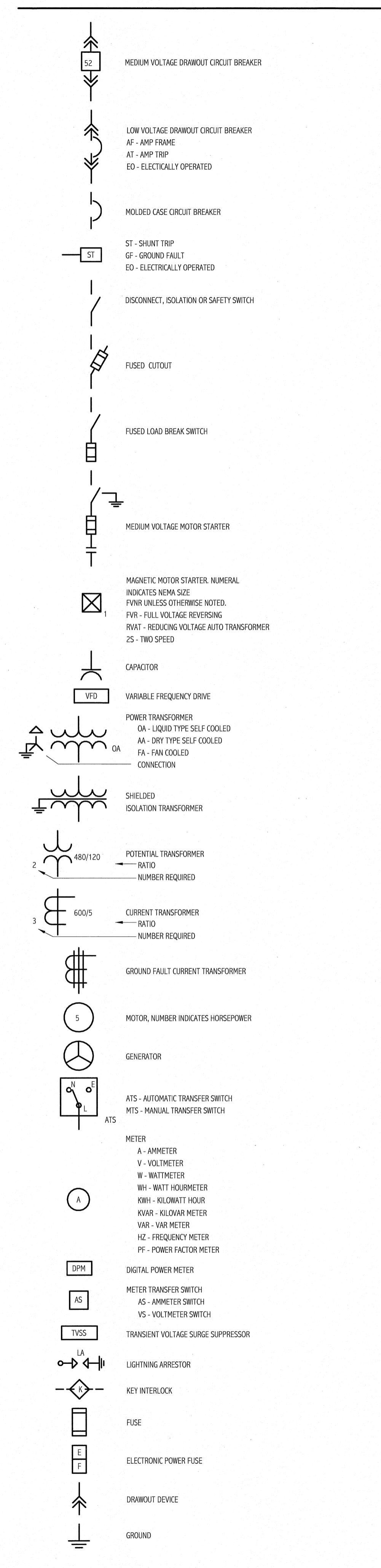
**SECURITY SYSTEMS**



**LINE TYPES**



**ONE LINE DIAGRAM**



**ABBREVIATIONS**

AAMP	AMPERE	LA	LIGHTNING ARRESTER
AFF	ABOVE FINISHED FLOOR	LTG	LIGHTING
AFG	ABOVE FINISHED GRADE	MC	METAL CLAD
AHJ	AUTHORITY HAVING JURISDICTION	MCB	MAIN CIRCUIT BREAKER
ACC	AMPERE INTERRUPTING CAPACITY	MR	MANUFACTURER
AWG	AMERICAN WIRE GAUGE	MI	MINERAL INSULATED
BFG	BELOW FINISHED GRADE	MLO	MAIN LUG ONLY
BOS	BOTTOM OF STEEL	MTD	MOUNTED
C	CONDUIT, CONDUCTOR	MV	MEDIUM VOLTAGE
CATV	CABLE TELEVISION	NC	NORMALLY CLOSED
CB	CIRCUIT BREAKER	NEC	NATIONAL ELECTRICAL CODE
CCTV	CLOSED CIRCUIT TELEVISION	NEG	NEGATIVE
CPT	CONTROL POWER TRANSFORMER	NEUT	NEUTRAL
CT	CURRENT TRANSFORMER	NIC	NOT IN CONTRACT
CU	COPPER	NO	NORMALLY OPEN
DACT	DIGITAL ALARM COMMUNICATOR TRANSMITTER	NTS	NOT TO SCALE
DB	DIRECT BURIED	PF	POWER FACTOR
DISC	DISCONNECT	PH	PHASE
DN	DOWN	PVC	POLYVINYL CHLORIDE
EMT	ELECTRICAL METALLIC TUBING	RGS	RIGID STEEL CONDUIT
EWC	ELECTRIC WATER COOLER	RSC	RIGID STEEL CONDUIT
FAA	FIRE ALARM ANNUCIATOR	RTD	RESISTANCE TEMPERATURE DETECTOR
FACP	FIRE ALARM CONTROL PANEL	SN	SOLID NEUTRAL
FBO	FURNISHED BY OTHERS	STP	SHIELDED TWISTED PAIR
FU	FUSE	STT	SHIELDED TWISTED TRIPLET
FWE	FURNISHED WITH EQUIPMENT	SWBD	SWITCHBOARD
GEN	GENERATOR	SWGR	SWITCHGEAR
GFCI	GROUND FAULT CIRCUIT BREAKER	TOS	TOP OF STEEL
GND	GROUND	TRANSF	TRANSFORMER
HP	HORSEPOWER	TVSS	TRANSIENT VOLTAGE SURGE SUPPRESSOR
HTR	HEATER	V	VOLT
IG	ISOLATED GROUND	VA	VOLT-AMPERE
IMC	INTERMEDIATE METAL CONDUIT	VAR	VOLT-AMPERE REACTIVE
K	KILO	WM	WATT METER
KMIL	THOUSAND CIRCULAR MILS	WP	WEATHER PROOF
KV	KILOVOLT	XMR	TRANSFORMER
KVA	KILOVOLT-AMPERE	XPR	EXPLOSION PROOF
KVAR	KILOVOLT-AMPERE REACTIVE		
KW	KILOWATT		
KWH	KILOWATT-HOUR		

**GENERAL NOTES:**

- ALL WORK SHALL BE PERFORMED IN ACCORDANCE WITH NFPA-70, NATIONAL ELECTRICAL CODE (NEC).
- ALL MOTOR SAFETY SWITCHES, DISCONNECTS AND MOTOR STARTERS ARE PROVIDED BY DIVISION 260000 UNLESS NOTED AS FURNISHED WITH EQUIPMENT (FWE).
- UNLESS OTHERWISE NOTED CONVENIENCE RECEPTACLES SHALL BE MOUNTED 18-INCHES AFF. LIGHTING TOGGLE SWITCHES 48-INCHES AFF. DATA SYSTEM OUTLETS 18-INCHES AFF. FIRE ALARM NOTIFICATION DEVICES 80-INCHES AFF OR 6-INCHES BELOW CEILING, WHICHEVER IS LOWER, AND FIRE ALARM MANUAL PULL STATIONS 48-INCHES TO TOP OF DEVICE.
- ALL PENETRATIONS THROUGH FLOORS, RATED WALLS AND PARTITIONS SHALL BE SEALED WITH UL APPROVED FIRE SEALANT MATERIAL TO MAINTAIN THE RATING OF SEPARATION.
- ALL ENCLOSURES, CONDUIT BODIES AND THEIR COVERS CONTAINING FIRE ALARM SYSTEM CONDUCTORS SHALL BE PAINTED RED.
- AN EQUIPMENT GROUNDING CONDUCTOR SHALL BE INSTALLED WITH EVERY FEEDER AND BRANCH CIRCUIT.
- UNLESS OTHERWISE NOTED WIRING SHALL BE 2#12 AWG CONDUCTORS AND #12 GND. HOME RUNS FED FROM 20A-1P CIRCUITS IN EXCESS OF 100 FEET SHALL BE #10 AWG.
- FLEXIBLE CONNECTIONS TO MOTORS SHALL BE LIQUID TIGHT FLEXIBLE METAL CONDUIT, UNLESS OTHERWISE NOTED.
- LIGHTING TOGGLE SWITCHES SHALL BE COMMERCIAL SPECIFICATION GRADE 120V/277 VOLT, SIDE WIRED AND PROVIDED WITH GROUNDING SCREW. DIMMING SWITCHES SHALL BE COMMERCIAL SPECIFICATION GRADE WITH LINEAR SLIDE AND ON/OFF SWITCH. LEVITON, PASS & SEYMOUR OR APPROVED EQUAL. COLOR BY ARCHITECT.
- CONVENIENCE RECEPTACLES SHALL BE HOSPITAL GRADE, GROUNDING TYPE, NEMA 5-20R, SIDE WIRED. HUBBELL, PASS & SEYMOUR OR APPROVED EQUAL. RECEPTACLES FED FROM EMERGENCY CIRCUITS SHALL BE RED. COLOR OF OTHERS BY ARCHITECT.
- PROVIDE WALL PLATES FOR ALL WIRING DEVICES, NYLON SMOOTH TYPE. RECEPTACLE WALL PLATES SHALL BE RED FOR EMERGENCY CIRCUITS. COLOR OF OTHERS BY ARCHITECT. ALL WALL PLATES SHALL BE PROVIDED WITH AN ADHESIVE LABEL STATING PANELBOARD AND CIRCUIT NUMBER.
- CONTRACTOR TO PROVIDE BOX IN WALL AND CONDUIT WITH PULL STRING FROM BOX TO ABOVE ACCESSIBLE CEILING FOR ALL VOICE/DATA LOCATIONS.
- CONTRACTOR TO PROVIDE BOX IN WALL 48" AFF AND CONDUIT WITH PULL STRING FROM BOX TO ABOVE ACCESSIBLE CEILING FOR ALL CARD READER LOCATIONS.

**GENERAL NOTE**

1. ALL GENERAL NOTES, SYMBOL LISTS, AND DETAILS ARE TO BE CONSIDERED AS APPLICABLE TO ALL ELECTRICAL DRAWINGS FOR THIS PROJECT. SYMBOLS AND ABBREVIATIONS SHOWN ON THIS SHEET ARE FOR REFERENCE ONLY AND DO NOT INDICATE THEIR INCORPORATION IN THE DESIGN.

144 Free Street P.O. Box 618  
Portland, Maine 04104  
Tel: (207) 752-2846  
Fax: (207) 752-1070  
www.smartinc.com

ARCHITECTURE  
ENGINEERING  
PLANNING  
INTERIOR DESIGN  
COMMISSIONING

**SMART**

STATE OF MAINE  
DONALD PERRELLI  
REGISTERED PROFESSIONAL ELECTRICAL ENGINEER  
NO. 7107

ISSUED FOR CONSTRUCTION  
08.24.10

Bramhall Radiology  
FLUORO RENOVATIONS  
PORTLAND, ME

NO.	DATE	DESCRIPTION
1	8.24.10	ISSUED FOR CONSTRUCTION

GRAPHIC SCALE:  
0" 1"

SCALE: 12" = 1'-0"

PROJECT MANAGER: DW  
IC/DRAWN BY: CDS  
A/E OF RECORD: JPP  
PROJECT NO: 09022-02  
DATE: 8.24.10  
SHEET TITLE:  
FLUORO LEGEND  
AND GENERAL NOTES

SHEET No. E-001