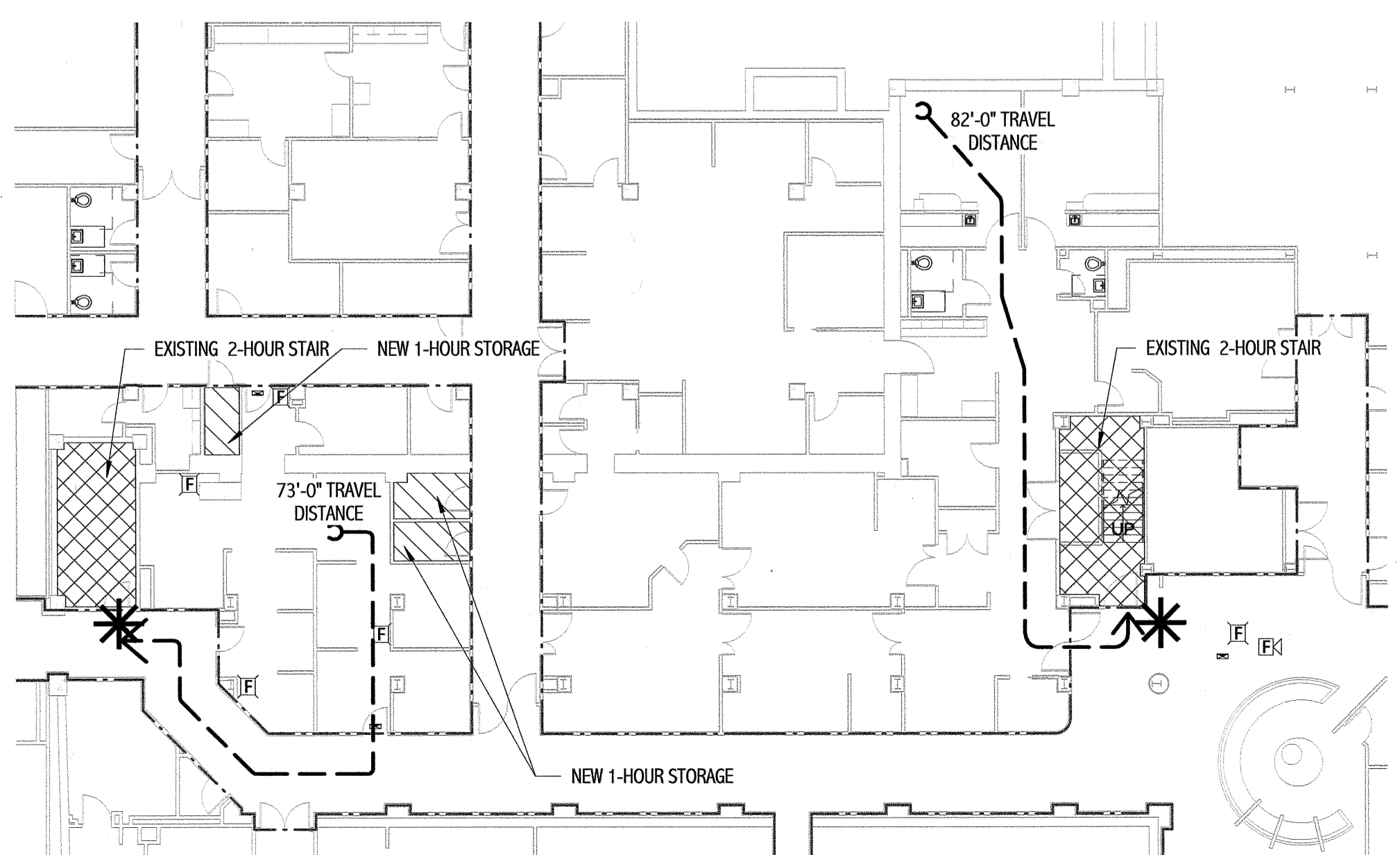


1 BASEMENT DEMOLITION PLAN
1/8" = 1'-0"



2 LIFE SAFETY PLAN/CODE PLAN
1/16" = 1'-0"

LIFE SAFETY SYMBOLS:

- EXIT SIGN, ARROWS INDICATE EGRESS DIRECTION, SHADING INDICATES SIGN FACE.
- FIRE ALARM AUDIBLE/VISUAL NOTIFICATION APPLIANCE. NUMBER IN PARENTHESES INDICATES ILLUMINATION IN CANDELA.
- FIRE ALARM VISIBLE-ONLY NOTIFICATION APPLIANCE.
- EMERGENCY LIGHTING
- PULL STATION
- FIRE EXTINGUISHER CABINET w/ HOSE
- FIRE EXTINGUISHER
- EGRESS
- EGRESS HANDICAP
- EGRESS PATH
- SMOKE PARTITION
- 1 HR
- 2 HR

LIFE SAFETY NOTES:

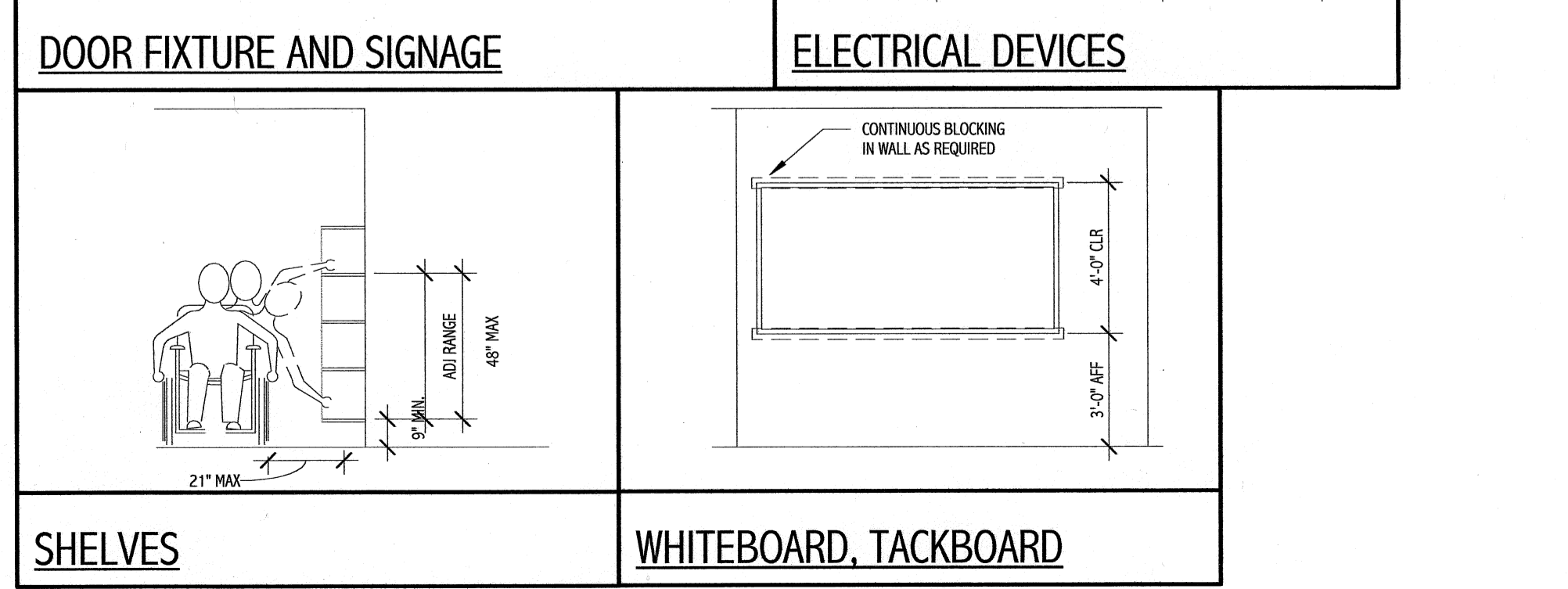
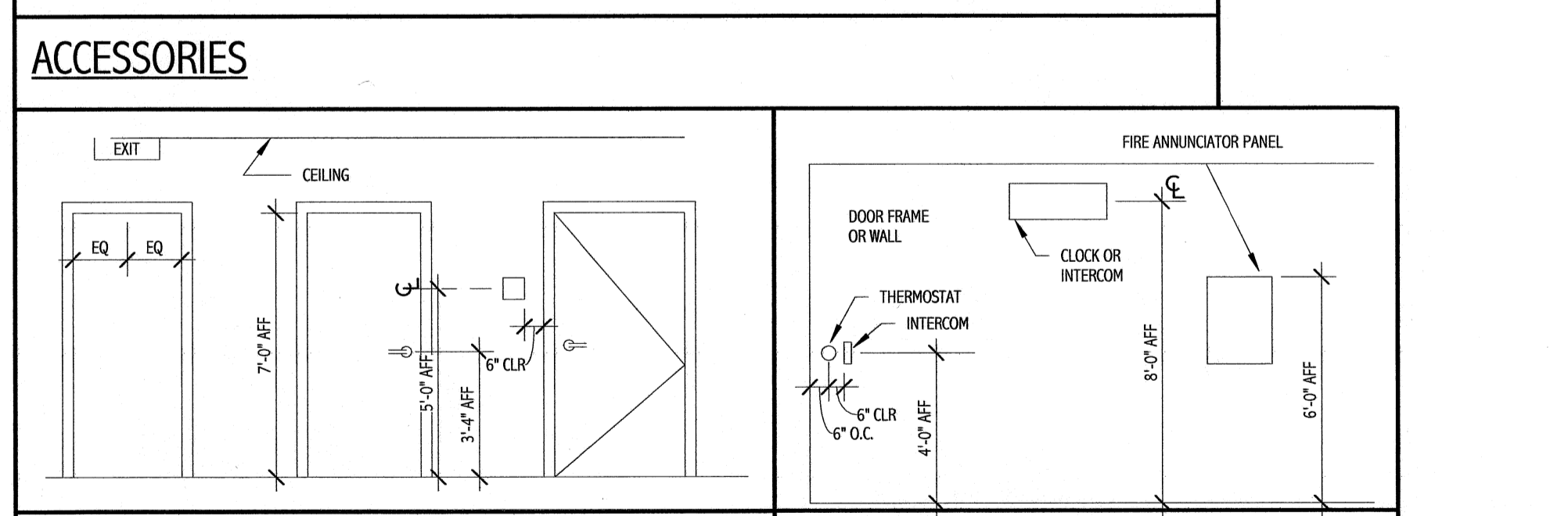
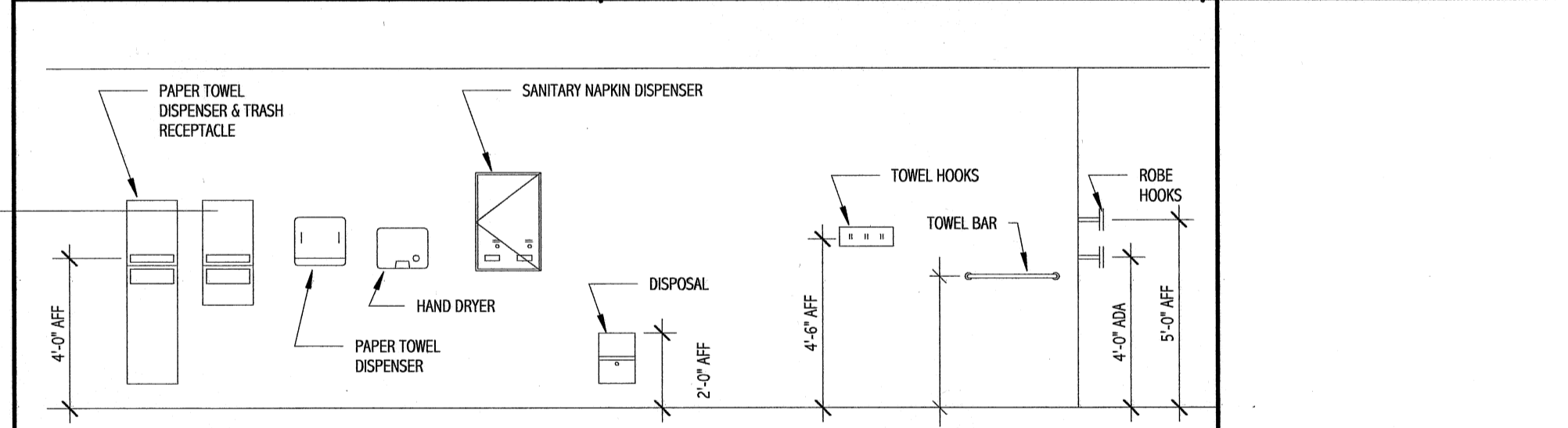
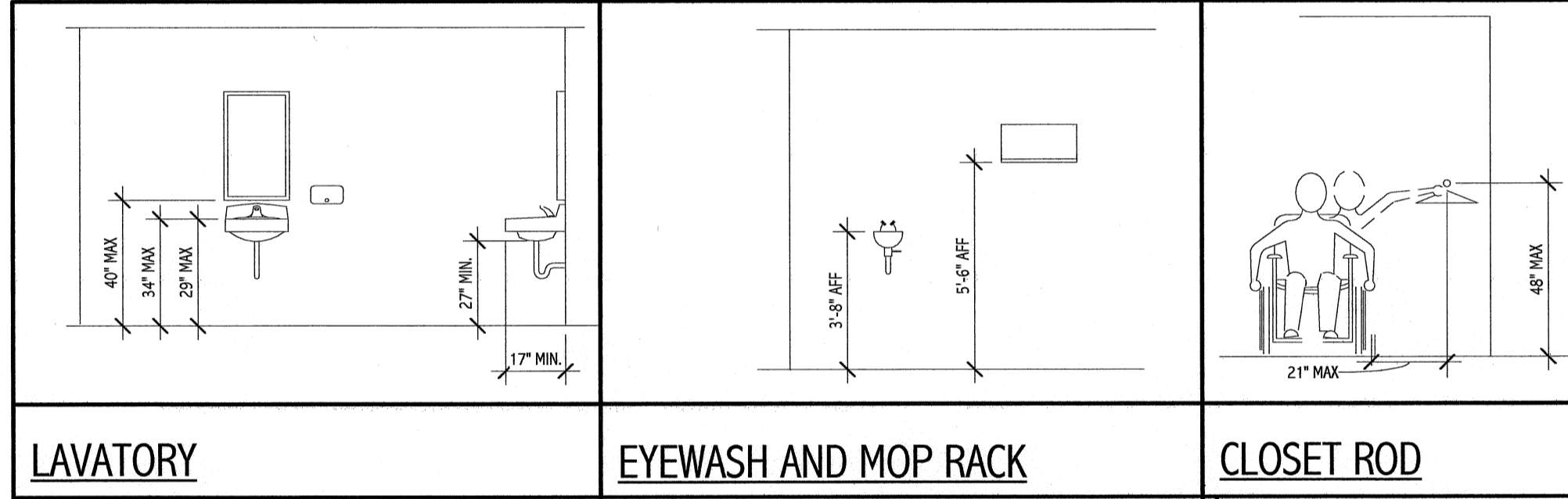
1. EGRESS LIGHTING SHALL BE PROVIDED IN ALL CORRIDORS AND PASSAGEWAYS LEADING TO EXITS. A MINIMUM AVERAGE OF 1 FOOT-CANDLE IS TO BE PROVIDED. THE SOURCE OF ILLUMINATION SHALL BE PROVIDED FOR 90 MINUTES AND CAN BE ANY OF THE FOLLOWING:
 - A) GENERATOR BACKED-UP LIGHT FIXTURES.
 - B) BATTERY BALLAST LIGHT FIXTURES.
 - C) INDIVIDUAL BATTERY UNIT WITH UNIT MONITOR OR REMOTE LAMPS.

DEMOLITION PLAN KEY NOTES:

- 1 REMOVE DOOR, FRAME AND HARDWARE. COORDINATE WITH OWNER THOSE ITEMS TO BE SALVAGED PRIOR TO REMOVAL.
- 2 REMOVE WALL OR PORTION OF WALL INDICATED BY DASHED LINE. PRIOR TO REMOVAL, IDENTIFY IF WALL IS LOAD BEARING. IF FOUND TO BE A BEARING WALL NOTIFY ARCHITECT IMMEDIATELY.
- 3 REMOVE FINISH FLOOR MATERIAL (IF ANY) AND BASE. PREPARE SURFACE FOR NEW FINISHES AS REQUIRED BY SCHEDULE AND SPECIFICATIONS.
- 4 REMOVE CEILING SYSTEM COMPLETE, I.E. FRAMING MEMBERS, TRACKS, WIRES, LIGHTING, ETC. COORDINATE EXTENTS WITH SCOPE OF NEW WORK.
- 5 REMOVE CASEWORK AND COUNTER TOP. COORDINATE WITH OWNER THOSE ITEMS TO BE SALVAGED PRIOR TO REMOVAL.
- 6 REMOVE MOVABLE PARTITION AND ASSOCIATED HARDWARE. RETURN TO OWNER FOR STORAGE/RE-USE.
- 7 REMOVE CASEWORK OR PORTION OF CASEWORK FOR RE-USE AND PREPARE FOR NEW LOCATION. SEE NEW WORK PLAN FOR EXTENTS AND NEW LOCATION.
- 8 REMOVE GLAZING & FRAME, SALVAGE FOR RE-USE. PREPARE FOR NEW LOCATION. SEE NEW WORK PLAN FOR NEW LOCATION.
- 9 REMOVE GLAZING, FRAME & OVERHEAD COILING DOOR. REFER TO ELECTRICAL DRAWING FOR ADDITIONAL DEMOLITION INFORMATION.
- 10 REMOVE GWB AND FURRING AFFECTED BY MOISTURE.
- 11 REMOVE DOOR, FRAME AND HARDWARE. SALVAGE FOR RE-USE. SEE NEW WORK PLAN FOR NEW LOCATION.

GENERAL DEMOLITION NOTES:

1. COORDINATE EXTENT OF DEMOLITION WITH LOCATIONS OF PARTITIONS DESCRIBED ON PLANS AND WITH LOCATIONS OF FINISHES NOTED AS EXISTING TO REMAIN.
2. ANY WALL, PARTITION, OR SURFACE DISTURBED BECAUSE OF NEW WORK OR DEMOLITION SHALL BE PATCHED AND FINISHED CONTINUOUSLY TO THE NEAREST CORNER UNLESS NOTED OTHERWISE. MATCH EXISTING ADJACENT CONSTRUCTION FINISHES, CONTINUITY, AND FIRE RATINGS UNLESS NOTED OTHERWISE.
3. PROTECT ALL FINISHES, MATERIALS AND EQUIPMENT NOTED AS EXISTING TO REMAIN. CONTRACTOR SHALL BE RESPONSIBLE TO REPLACE ALL FINISHES, MATERIALS, AND EQUIPMENT DAMAGED DURING CONSTRUCTION.
4. DIMENSIONS INDICATED +/- ARE EXISTING CONDITION DIMENSIONS TO BE VERIFIED IN FIELD.
5. CONTRACTOR TO HOLD PRE-DEMOLITION MEETING WITH OWNER, CONSTRUCTION MANAGER, SUB-CONTRACTORS, ETC. PRIOR TO BEGINNING DEMOLITION WORK TO REVIEW HOSPITALS POLICIES, NOISE CONTROL MEASURES, ETC.
6. CLEARLY IDENTIFY AND TAG MECHANICAL, PLUMBING, AND ELECTRICAL FIXTURES OR EQUIPMENT THAT ARE STILL IN USE PRIOR TO DEMOLITION TO AVOID ACCIDENTAL REMOVAL.
7. WALLS INDICATED WITH A DASHED LINE ARE TO BE REMOVED COMPLETE, IF WALL IS BEARING PRIOR TO REMOVAL. IF SO, CONTACT ARCHITECT/ENGINEER IMMEDIATELY.
8. SEE M.E.P. DRAWINGS FOR THE SCOPE OF DEMOLITION IN THOSE DISCIPLINES.



141 Fore Street P.O. Box 618
Portland, Maine 04104
Tel: (207) 772-8446
Fax: (207) 772-1070
www.mnrc.com

ARCHITECTURE
ENGINEERING
PLUMBING
INTERIOR DESIGN
COMMISSIONING

SMRT

LICENSED ARCHITECT
DEREK J. VILLEUX
No. 1188
STATE OF MAINE
8.24.10

PROJECT NORTH

Bramhall Radiology
FLUORO RENOVATIONS
PORTLAND, ME

ISSUED FOR CONSTRUCTION
8.24.10

NO.	DATE	DESCRIPTION	REV.
0	8.24.10	ISSUED FOR CONSTRUCTION	0

GRAPHIC SCALE:
0" 1"

SCALE: As indicated
PROJECT MANAGER: DIV
DRAWN BY: ART
DATE OF RECORD: 09022-02
PROJECT NO.: 8.24.10

SHEET TITLE:
BASEMENT LIFE SAFETY PLAN, PHASING PLAN & DEMOLITION PLANS

SHEET No. A-001