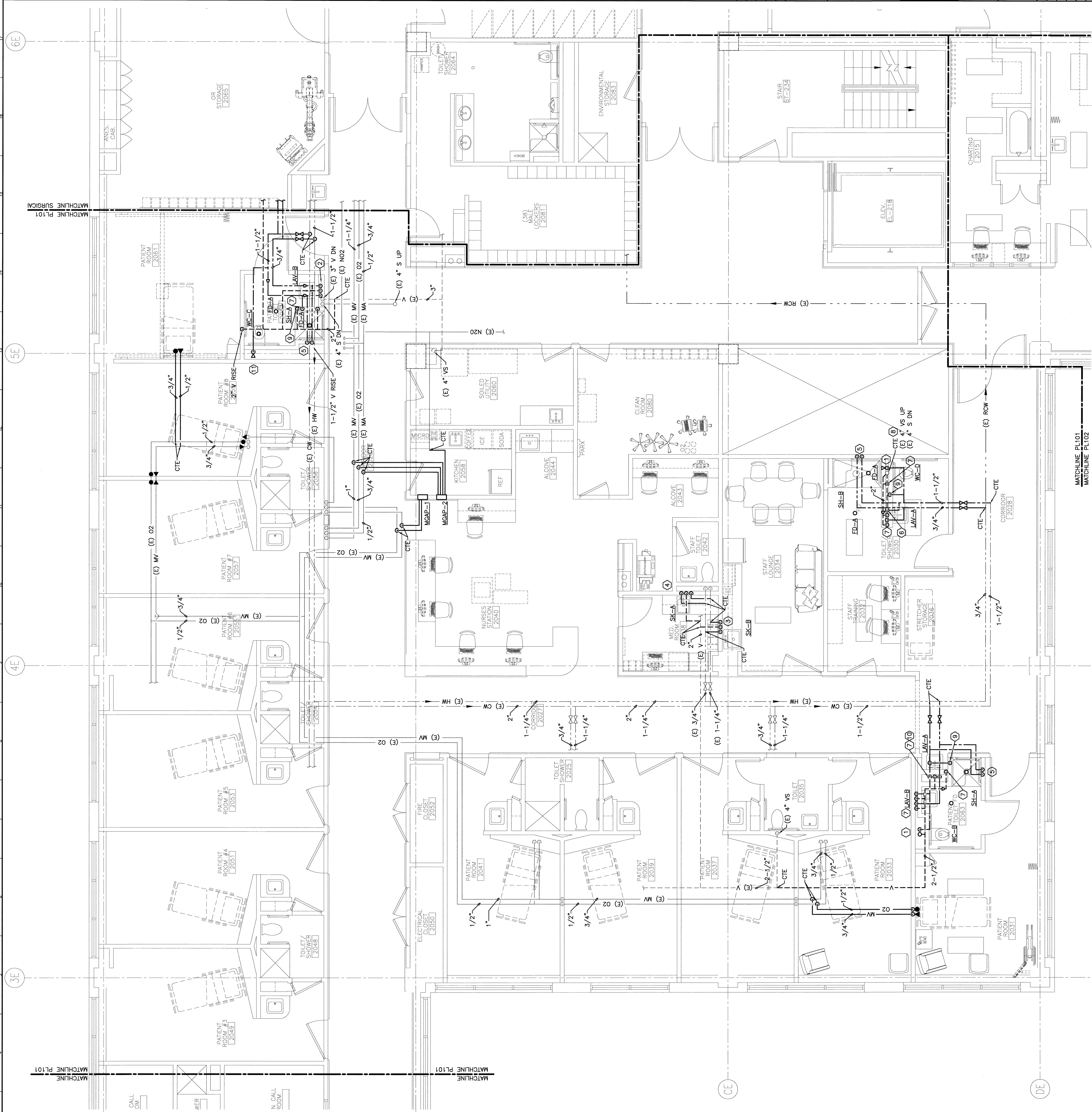


NOTE:  
1. SEE SHEET P-001 FOR LEGEND AND ABBREVIATIONS.

- KEYED NOTES:**
- ① 1-1/2" CW-DROP. PROVIDE SHOCK ABSORBER WITH SHUT-OFF VALVE AT TOP OF DROP-ACCESSIBLE. 2" V-RISE, 4" S-DN.
  - ② 1-1/2" V-RISE. 1/2" CW AND 1/2" HW-DROP.
  - ③ 1-1/2" V-RISE. 2" W-DN. 1/2" CW AND 1/2" HW-DROP.
  - ④ 1-1/2" V-RISE. CONNECT 2" W TO EXISTING 4" SANITARY IN PIPE CHASE. 1/2" CW AND 1/2" HW-DROP.
  - ⑤ 1/2" CW AND 1/2" HW-DROP.
  - ⑥ 1-1/2" V-RISE. 1/2" CW AND 1/2" HW-DROP. 2" W. RUN FULL SIZE WITH-IN PIPE CHASE. CONNECT TO EXISTING 4" S-DN.
  - ⑦ 1-1/2" V-RISE
  - ⑧ OFFSET SANITARY AND VENT PIPING AS/IF NECESSARY TO ALIGN WITH EXISTING STACK.
  - ⑨ 1/2" TP-DN. SEE DETAIL A14/PL101 (SIMILAR).
  - ⑩ 3/4" CW AND 3/4" HW-DROP. CONNECT 1/2" CW AND 1/2" HW-EACH TO LAV-2A (TYP. FOR 2).
  - ⑪ 1-1/2" CW-DROP. PROVIDE SHOCK ABSORBER WITH SHUT-OFF VALVE AT TOP OF DROP-ACCESSIBLE.



NOTE:  
1. SEE SHEET P-001 FOR LEGEND AND ABBREVIATIONS.

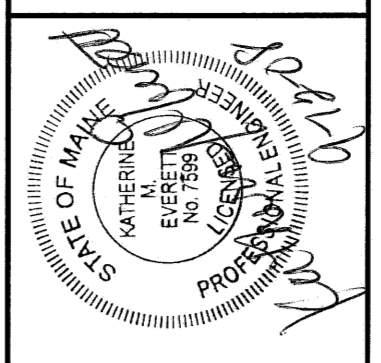
- KEYED NOTES:**
- ① 1-1/2" CW-DROP. PROVIDE SHOCK ABSORBER WITH SHUT-OFF VALVE AT TOP OF DROP-ACCESSIBLE. 2" V-RISE, 4" S-DN.
  - ② 1-1/2" V-RISE. 1/2" CW AND 1/2" HW-DROP.
  - ③ 1-1/2" V-RISE. 2" W-DN. 1/2" CW AND 1/2" HW-DROP.
  - ④ 1-1/2" V-RISE. CONNECT 2" W TO EXISTING 4" SANITARY IN PIPE CHASE. 1/2" CW AND 1/2" HW-DROP.
  - ⑤ 1/2" CW AND 1/2" HW-DROP.
  - ⑥ 1-1/2" V-RISE. 1/2" CW AND 1/2" HW-DROP. 2" W. RUN FULL SIZE WITH-IN PIPE CHASE. CONNECT TO EXISTING 4" S-DN.
  - ⑦ 1-1/2" V-RISE
  - ⑧ OFFSET SANITARY AND VENT PIPING AS/IF NECESSARY TO ALIGN WITH EXISTING STACK.
  - ⑨ 1/2" TP-DN. SEE DETAIL A14/PL101 (SIMILAR).
  - ⑩ 3/4" CW AND 3/4" HW-DROP. CONNECT 1/2" CW AND 1/2" HW-EACH TO LAV-2A (TYP. FOR 2).
  - ⑪ 1-1/2" CW-DROP. PROVIDE SHOCK ABSORBER WITH SHUT-OFF VALVE AT TOP OF DROP-ACCESSIBLE.



REV.	ISSUED FOR CONSTRUCTION	DESCRIPTION	DATE
0			9-12-08

ISSUED FOR CONSTRUCTION  
9-12-08

CURRENT ISSUE STATUS:



SMRI  
ARCHITECTURE  
ENGINEERING  
PLANNING  
INTERIOR DESIGN  
COMMISSIONING

144 Fore Street, P.O. Box 618  
Portland, Maine 04104  
Tel: (207) 752-8846  
Fax: (207) 752-8030  
www.smri.com

MAINE MEDICAL CENTER - LL BEAN WING 2ND FLOOR  
INPATIENT SERVICES

PLUMBING AND MED GAS  
PART PLAN

SHEET TITLE:	PLUMBING AND MED GAS
SCALE:	1/4" = 1'-0"
DATE:	9-12-08
PROJECT MANAGER:	CP
JOB CDR/DRAWN:	MJR/BGG
DATE OF RECORD:	RME
SHEET NO.:	PL 101-08099
PROJECT NO.:	08099

A1 PARTIAL FLOOR PLAN

3/4" = 1'-0"