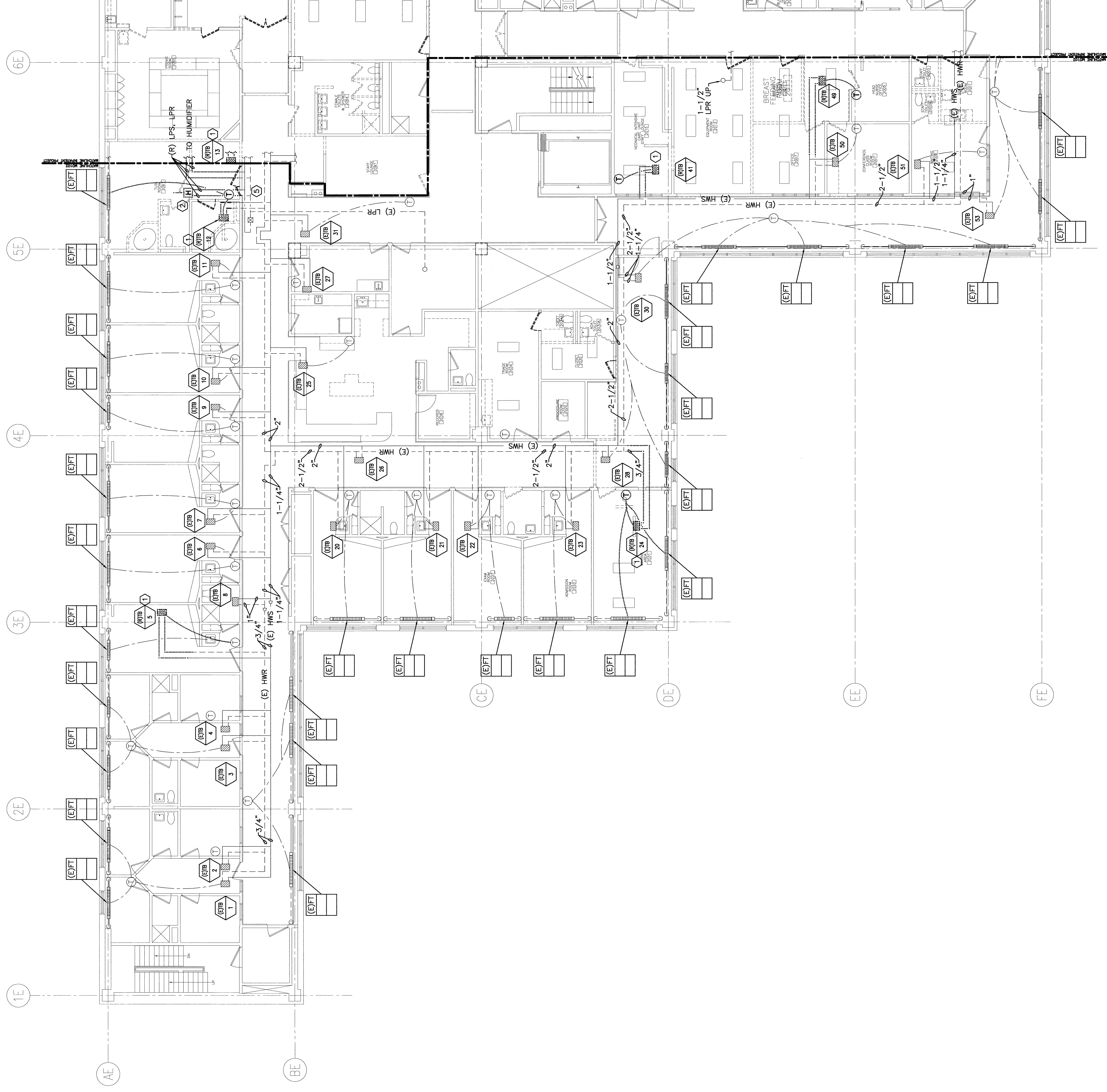


NOTE:

- SEE SHEET W-001 FOR LEGEND AND ABBREVIATIONS.
- REMOVE EXISTING CONTROLS AND CONTROLS HARDWARE ON ALL EXISTING TO REMAIN TERMINAL (TB) BOXES, INCLUDING AIRFLOW SENSORS, DAMPER ACTUATORS, HW CONTROL VALVE AND TEMPERATURE SENSORS.

KEYED NOTES:

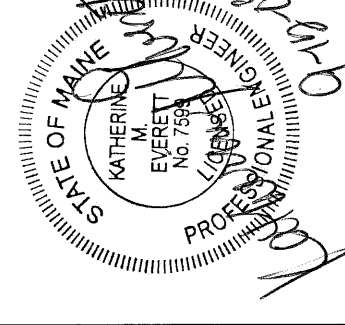
- REMOVE EXISTING TB TERMINAL AND ASSOCIATED CONTROLS. REMOVE EXISTING HWS/R BACK TO NEAREST MAIN OR AS FAR AS INDICATED.
- REMOVE DUCT MOUNTED HUMIDIFIER AND ASSOCIATED CONTROLS. REMOVE STEAM AND CONDENSATE PIPING BACK TO MAIN AND CRF.



ISSUED FOR CONSTRUCTION	DATE
0	9-12-08
REL:	DESCRIPTION

ISSUED FOR CONSTRUCTION
9-12-08

CURRENT ISSUE STATUS:



141 Pine Street, Suite 1115
Portland, Maine 04102
Tel: (207) 773-3846
Fax: (207) 772-8009
www.smrtinc.com

SMRT

ARCHITECTURE
ENGINEERING
PLANNING
INTERIOR DESIGN
COMMISSIONING

MAINE MEDICAL CENTER - L.L. BEAN WING 2ND FLOOR
INPATIENT SERVICES
PORTLAND, MAINE

HVAC PIPING
DEMOLITION PLAN

SHEET TITLE	1/8" = 1'-0"	DATE	9-12-08
PROJECT NUMBER	00P	GRAPHIC SCALE	0'
JOB C/D/DRAWN	BGG		
A/E OF RECORD	RME	SHEET No.	MD 102
SMRT C/D FILE	MD102-08099	PROJECT No.	08099