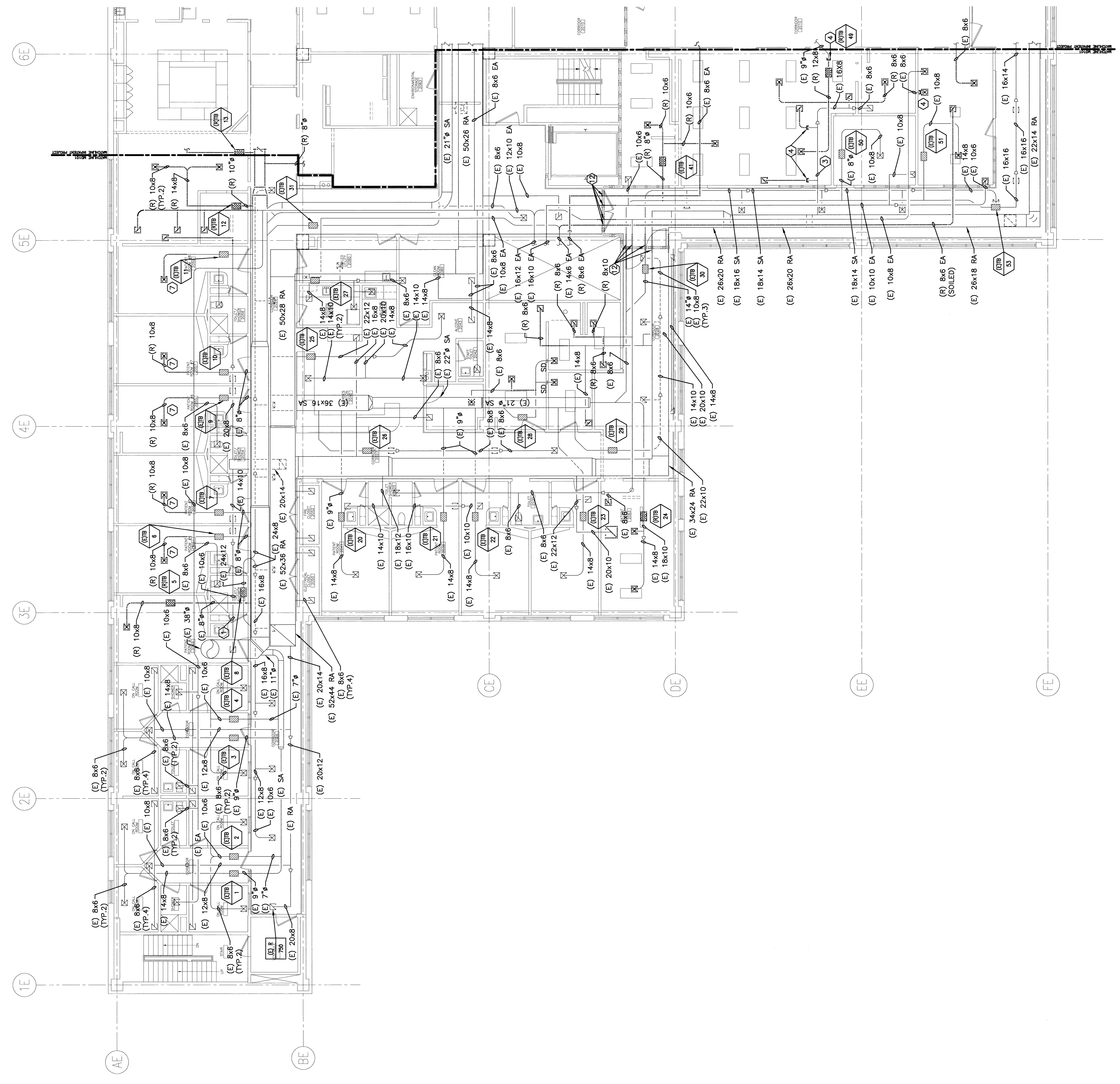


**NOTE:**

- SEE SHEET M-001 FOR LEGEND AND ABBREVIATIONS.
- REMOVE EXISTING CONTROLS AND CONTROLS HARDWARE ON ALL EXISTING TO REMAIN TERMINAL (TR) BOXES, INCLUDING AIRFLOW SENSORS, DAMPER ACTUATORS, HW CONTROL VALVE AND TEMPERATURE SENSORS.

**KEYED NOTES:**

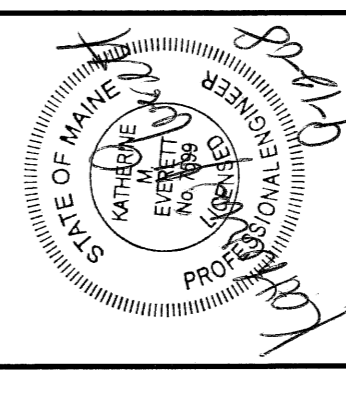
- (E) 10x6.
- (E) 22x14 SA.
- (E) 20x10.
- CUT AND CAP EXISTING DUCTWORK.
- (E) R, 795 CFM.
- CAP ISOLATION EXHAUST AT SHAFT WALL.
- REMOVE EXISTING OFF-USER RISER BRANCH DUCT AS NECESSARY TO CLEAR NEW OFF-USER RISER BRANCH EXISTING DIFFUSER AS SHOWN ON NEW CONDITIONS PLAN.
- (E) 16x12 TOILET EXHAUST TO T.E. RISER.
- (E) 16x10 GENERAL EXHAUST TO G.E. RISER.
- (R) 14x6 SOILED EXHAUST AND ASSOCIATED FIRE DAMPER, 20x14 S.E. RISER TO REMAN. TE-IN TO RISER WITH NEW SOILED EXHAUST AS SHOWN ON MH101.
- (E) 24x14 ISOLATION EXHAUST RISER TO REMAN.
- REMOVE MINIMUM 3'-0" LONG DUCT SECTION OVER NEW RATED WALL TO ALLOW FOR INSTALLATION OF NEW SMOKE DAMPER AND ACCESS DOOR. CONFIRM EXISTING DUCT SIZE (TYPICAL).



ISSUED FOR CONSTRUCTION	DATE
0	9-12-08
REL.	

**ISSUED FOR CONSTRUCTION**  
9-12-08

CURRENT ISSUE STATUS:



144 Pine Street, Suite 1118  
Portland, Maine 04102  
Tel: (207) 773-8346  
Fax: (207) 773-8078  
www.smrtinc.com

**SMRT**  
ARCHITECTURE  
ENGINEERING  
PLANNING  
INTERIOR DESIGN  
COMMISSIONING

MAINE MEDICAL CENTER - L.L. BEAN WING 2ND FLOOR  
INPATIENT SERVICES  
PORTLAND, MAINE

HVAC DUCTWORK  
DEMOLITION PLAN

SHEET TITLE	1/8" = 1'-0"	DATE	9-12-08
PROJECT NUMBER	00P	GRAPHIC SCALE	0'
JOB CONTROL NUMBER	B22		
DATE OF RECORD	RFE	SHEET No.	
SHEET CAD FILE	MH101-08099		
PROJECT No.	08099		

MD101