

**CODE COMPLIANCE NOTES:**

- SEE 6001 FOR APPLICABLE CODES
- ALL PATIENT CORRIDORS SHALL BE A MINIMUM WIDTH OF 8'-0" CLEAR.
- FLOORS SHALL BE CONSTRUCTED AS 2HR FIRE RATING.
- AT ALL SMOKE PARTITIONS, SMOKE COMPARTMENT, 1HR AND 2HR WALLS/PARTITIONS, CONTRACTOR SHALL STENCIL EACH WALL WITH LEVELS WITH THE DESIGNATED RATING. THE STENCILING SHALL BE PROVIDED AT APPROXIMATELY 10'-0" INTERVALS.

**KEY:**

LIMITS OF SMOKE COMPARTMENT (1-HR RATING)

TRAVEL DISTANCE

1-HOUR PARTITION

2-HOUR PARTITION

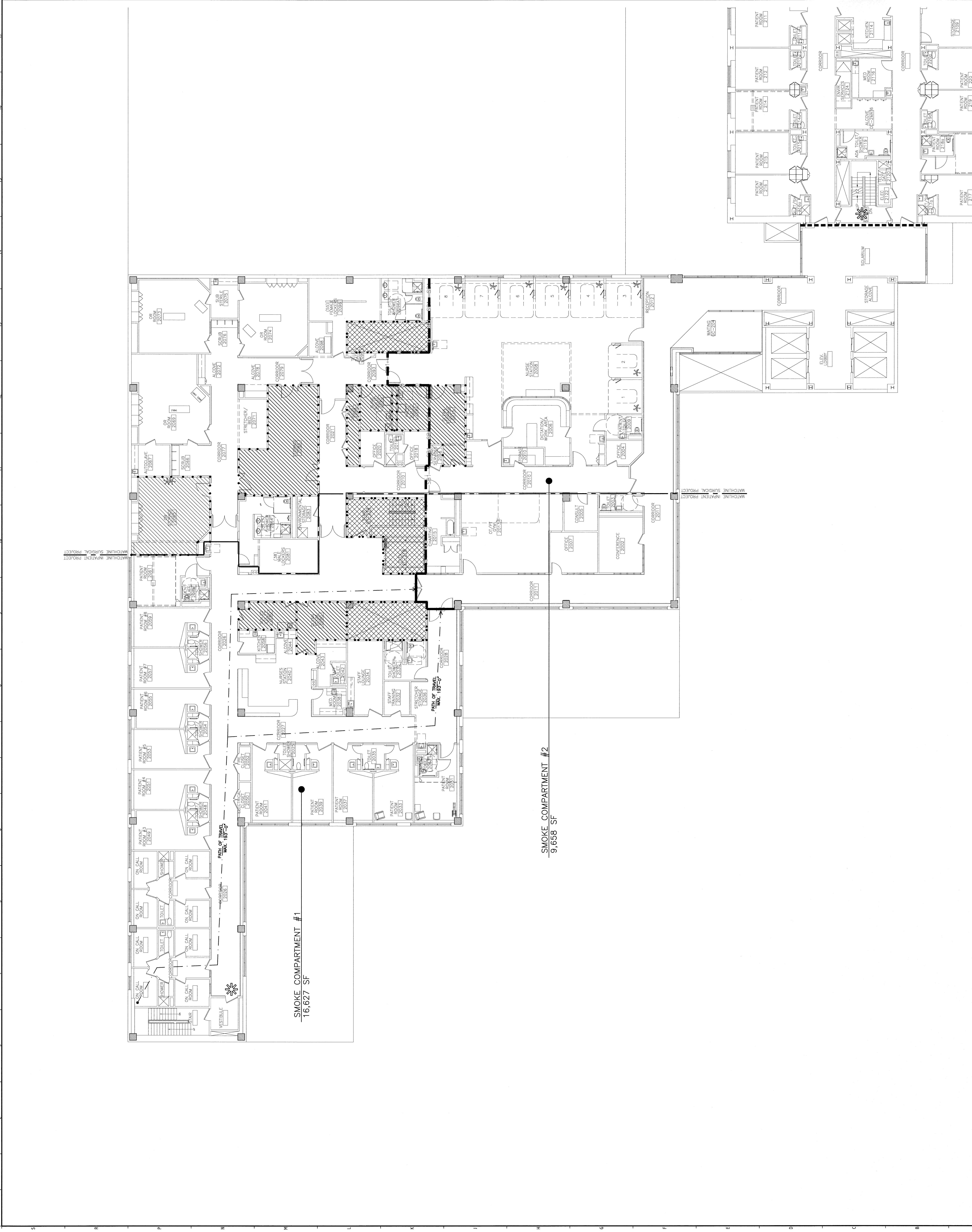
SMOKE COMPARTMENT

2HR SEPARATION

DESIGNATES POINT OF EGRESS

1-HOUR RATED AREA

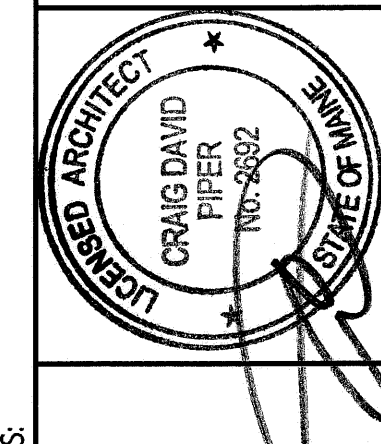
2-HOUR RATED AREA



ISSUED FOR CONSTRUCTION	DESCRIPTION	DATE
0		9-12-08
1		

ISSUED FOR CONSTRUCTION  
9-12-08

CURRENT ISSUE STATUS:



144 Fore Street, 6th Floor  
Portland, Maine 04104  
Tel: (603) 772-8000  
Fax: (603) 772-8005  
www.smrtd.com



ARCHITECTURE  
ENGINEERING  
PLANNING  
INTERIOR DESIGN  
COMMISSIONING

MAINE MEDICAL CENTER - L.L. BEAN WING 2ND FLOOR  
INPATIENT SERVICES  
PORTLAND, MAINE

**CODE COMPLIANCE PLAN**

SHEET TITLE:	3/32" = 1'-0"	DATE:	9-12-08
PROJECT MANAGER:	MJR	GRAPHIC SCALE:	0'
DATE OF RECORD:	09P		
SMRT CAD FILE:	A-102-08099	SHEET No.:	A-102
PROJECT No.:	08099		

**A1 CODE COMPLIANCE STRATEGY PLAN**

3/32" = 1'-0"

DATE