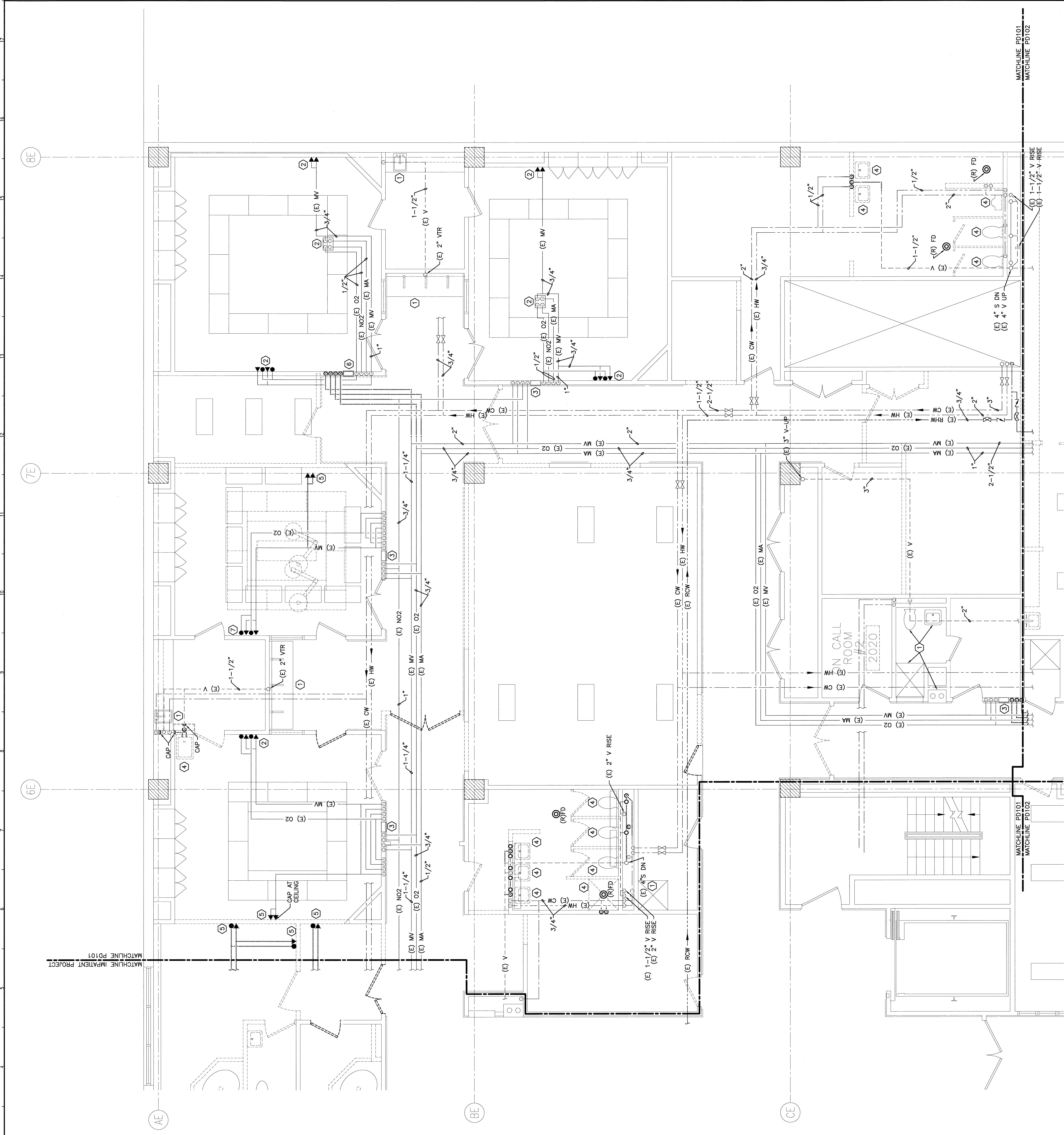


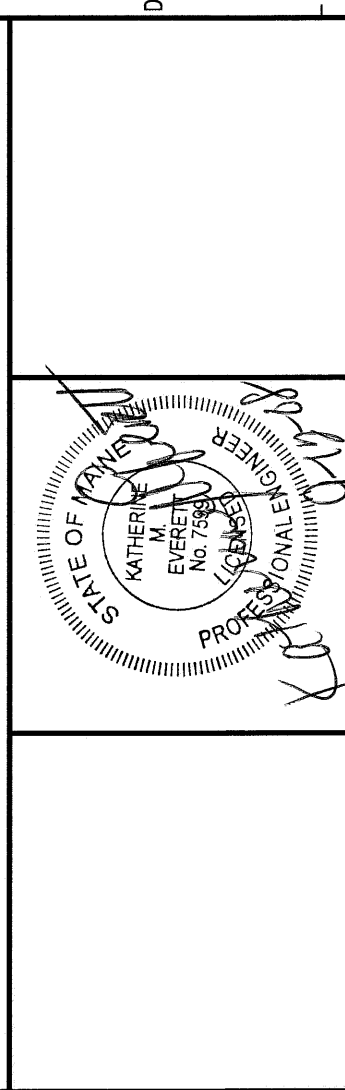
**NOTE:**  
 1. SEE SHEET P-001 FOR LEGEND AND ABBREVIATIONS.  
 2. CONTRACTOR SHALL PATCH FLOOR TO MATCH EXISTING AS NECESSARY.

- KEYED NOTES:**
- ① EXISTING PLUMBING FIXTURE(S) AND ASSOCIATED PIPING TO REMAIN IN SERVICE.
  - ② EXISTING MEDICAL GAS OUTLET(S) TO REMAIN.
  - ③ EXISTING MEDICAL GAS VALVE BOX/ ALARM PANEL AND ASSOCIATED PIPING TO REMAIN.
  - ④ DISCONNECT AND REMOVE EXISTING PLUMBING FIXTURE AS INDICATED. REMOVE INACTIVE WASTE, VENT, HOT OR COLD WATER, AND INACTIVE MEDICAL GAS PIPING FROM UNFINISHED SURFACES OR AS INDICATED.
  - ⑤ REMOVE EXISTING MEDICAL GAS OUTLETS. REMOVE AND CAP INACTIVE PIPING BACK TO NEAREST MAIN OR AS INDICATED.
  - ⑥ REMOVE EXISTING MEDICAL GAS VALVE BOX/ALARM PANEL AND ASSOCIATED MEDICAL GAS PIPING AS INDICATED.
  - ⑦ REMOVE EXISTING MEDICAL GAS OUTLETS. CAP PIPING AT WALL AND PROVIDE NEW BURN COVER TUBE.



REV.	ISSUED FOR CONSTRUCTION	DATE
0		9-12-08

**ISSUED FOR CONSTRUCTION**  
 9-12-08



144 Fore Street, P.O. Box 618  
 Portland, Maine 04104  
 Tel: (207) 772-3846  
 Fax: (207) 772-8030  
 www.smrti.com

**SMRTI**  
 ARCHITECTURE  
 ENGINEERING  
 PLANNING  
 INTERIOR DESIGN  
 COMMISSIONING

MAINE MEDICAL CENTER - LL BEAN WING 2ND FLOOR  
 SURGICAL SERVICES  
 PORTLAND, MAINE

**PLUMBING AND MED GAS  
 DEMOLITION PARTIAL PLAN**

PROJECT No. PD101

8E	7E	6E	5E	4E	3E	2E	1E	0E
AE	BE	CE	DE	EE	FE	GE	HE	IE

1/4"=1'-0"  
**A1 PARTIAL FLOOR PLAN**

SHEET TITLE:	DATE:	9-12-08
SCALE:	GRAPHIC SCALE:	0'
PROJECT MANAGER:	CDP	
JOB CAP/DRAWN:	BOG	
DATE OF RECORD:	RKE	
SHEET NO.:		
PROJECT CAD FILE:	PD101-0808	
PROJECT No.:	0808	