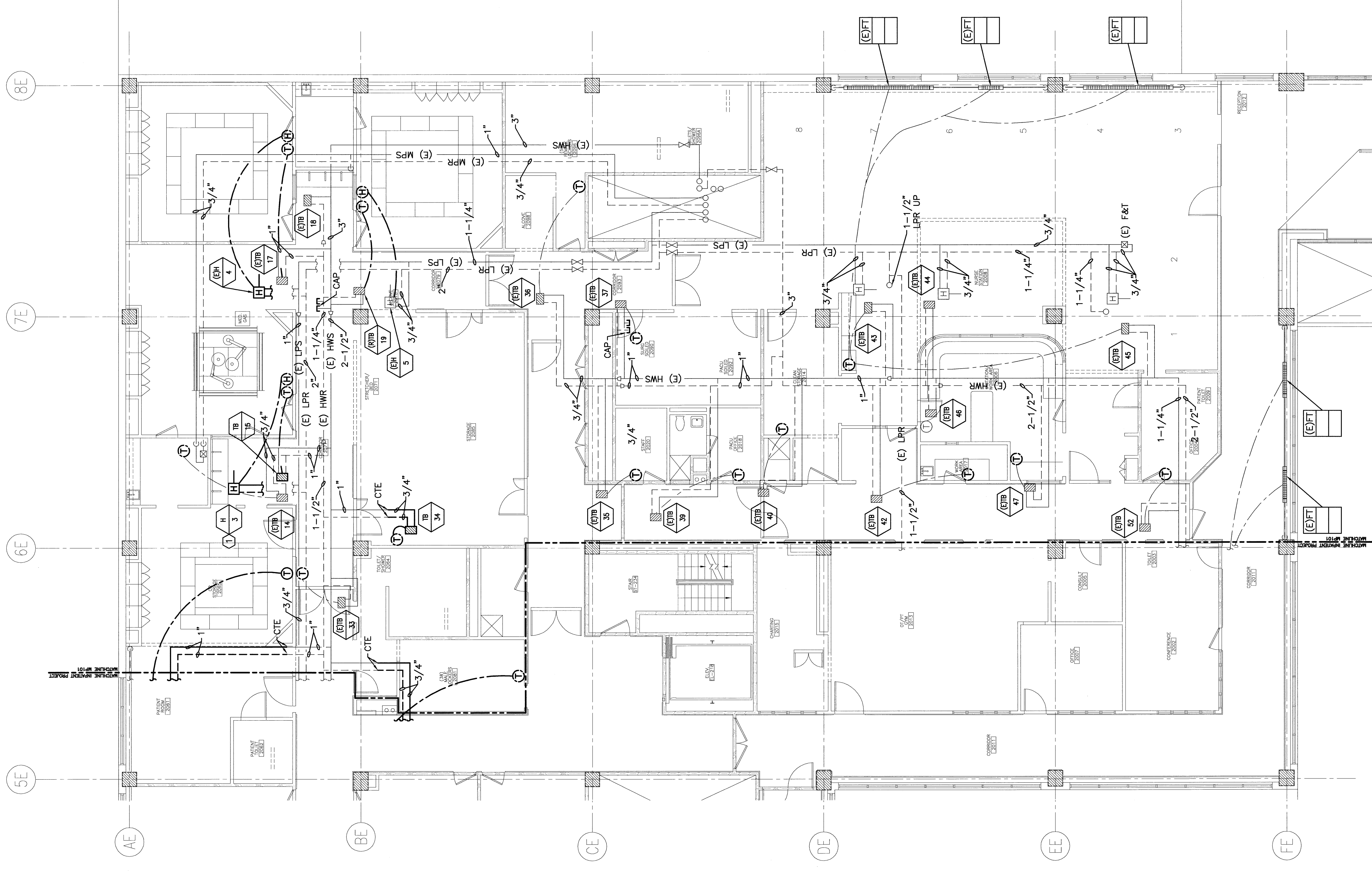


NOTE:

1. SEE SHEET M-001 FOR LEGEND AND ABBREVIATIONS.
2. PROVIDE NEW CONTROLS FOR ALL EXISTING TO REMAIN TERMINAL BOXES, INCLUDING CONTROL VALVE, DAMPER ACTUATORS AND ROOM TEMPERATURE SENSORS. TIE-IN TO EXISTING HONEYWELL EBI DDC SYSTEM.

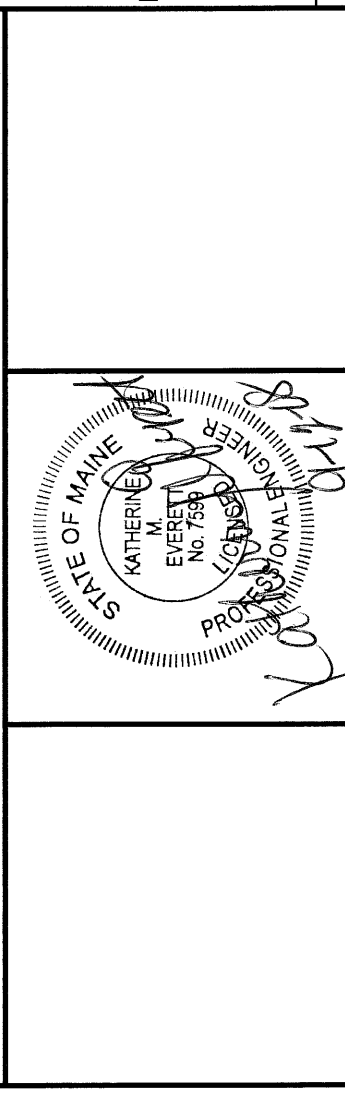
KEYED NOTES:

1. EXTEND EXISTING 3/4" LPS AND 3/4" LPR TO NEW HUMIDIFIER MOUNTED HIGH-LIMIT HUMIDISTAT. SEE DETAIL AS/DRAWING M-502 (SIMILAR).



REV.	ISSUED FOR CONSTRUCTION	DESCRIPTION	DATE
0			9-12-08

ISSUED FOR CONSTRUCTION
9-12-08



144 Fore Street, Box 618
Portland, Maine 04101
Tel: (207) 772-2846
Fax: (207) 772-2847
www.smrti.com

SMRTI
ARCHITECTURE
ENGINEERING
PLANNING
INTERIOR DESIGN
COMMISSIONING

MAINE MEDICAL CENTER - L.L. BEAN WING 2ND FLOOR
SURGICAL SERVICES
PORTLAND, MAINE

HVAC
PIPING PLAN

PROJECT NO. 08098
SHEET NO. MP101

SHEET TITLE	DATE	SCALE
PIPING PLAN	9-12-08	1/8" = 1'-0"

PROJECT MANAGER	DATE OF RECORD	SMRTI CAD FILE
CP	KVE	MP101-08098

PROJECT MANAGER	DATE OF RECORD	SMRTI CAD FILE
CP	KVE	MP101-08098

PROJECT MANAGER	DATE OF RECORD	SMRTI CAD FILE
CP	KVE	MP101-08098