

NOTES:
 1. SEE NOTES ON P-001 FOR LEGENDS AND ABBREVIATIONS.

KEYED NOTES:
 ① EXISTING MED GAS OUTLETS TO REMAIN.
 ② REMOVE EXISTING MEDICAL GAS OUTLETS AND RELATED PIPING AS INDICATED.
 ③ REMOVE EXISTING MEDICAL AIR VALVE BOX AND ASSOCIATED PIPING BACK TO NEAREST MAIN, OR AS INDICATED. INSTALL PIPING BACK TO NEAREST MAIN AND ALARM PANEL WHERE SHOWN ON NEW CONDITIONS PLAN.

ISSUED FOR CONSTRUCTION
 9-12-08

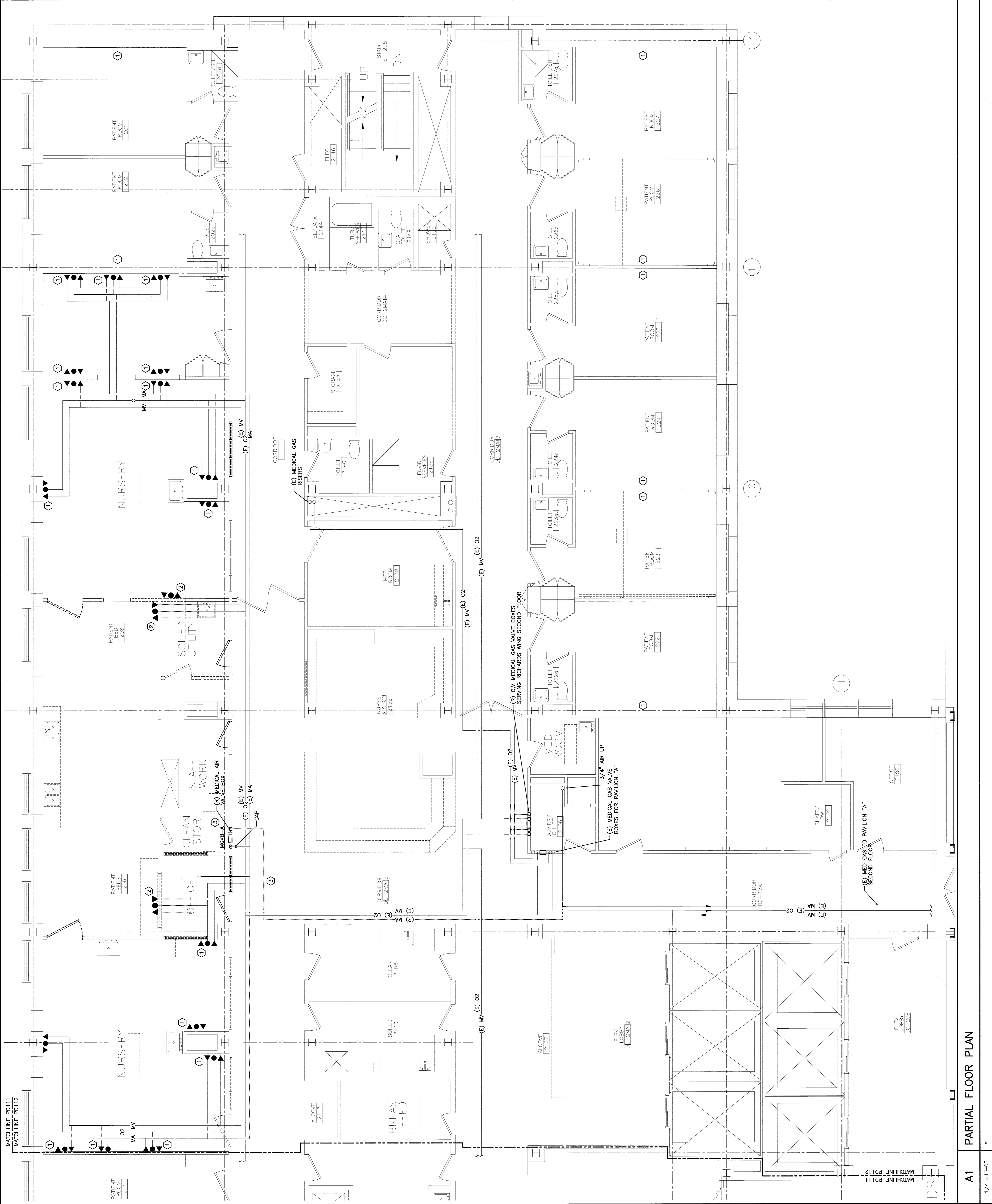
SMRT
 MAINE MEDICAL CENTER - RICHARDS WING 2ND FLOOR
 IMPATIENT SERVICES
 PORTLAND, MAINE

144 E. Commercial St.
 Portland, Maine 04103
 Tel: (207) 773-3446
 Fax: (207) 772-5076
 www.smrtinc.com

ARCHITECTURE
 ENGINEERING
 PLANNING
 INTERIOR DESIGN
 COMMISSIONING

**PARTIAL SECOND FLOOR
 MED GAS DEMOLITION PART PLAN**

SHEET TITLE: PARTIAL SECOND FLOOR
 SCALE: 1/4" = 1'-0" DATE: 9-12-08
 PROJECT MANAGER: MURDOL CIP GRAPHIC SCALE: 0'
 JOB CAPTION: IMPATIENT SERVICES
 SHEET NO.: PD112
 SHEET NAME: PD112-08103
 PROJECT NO.: 08103



A1 PARTIAL FLOOR PLAN
 1/4" = 1'-0"