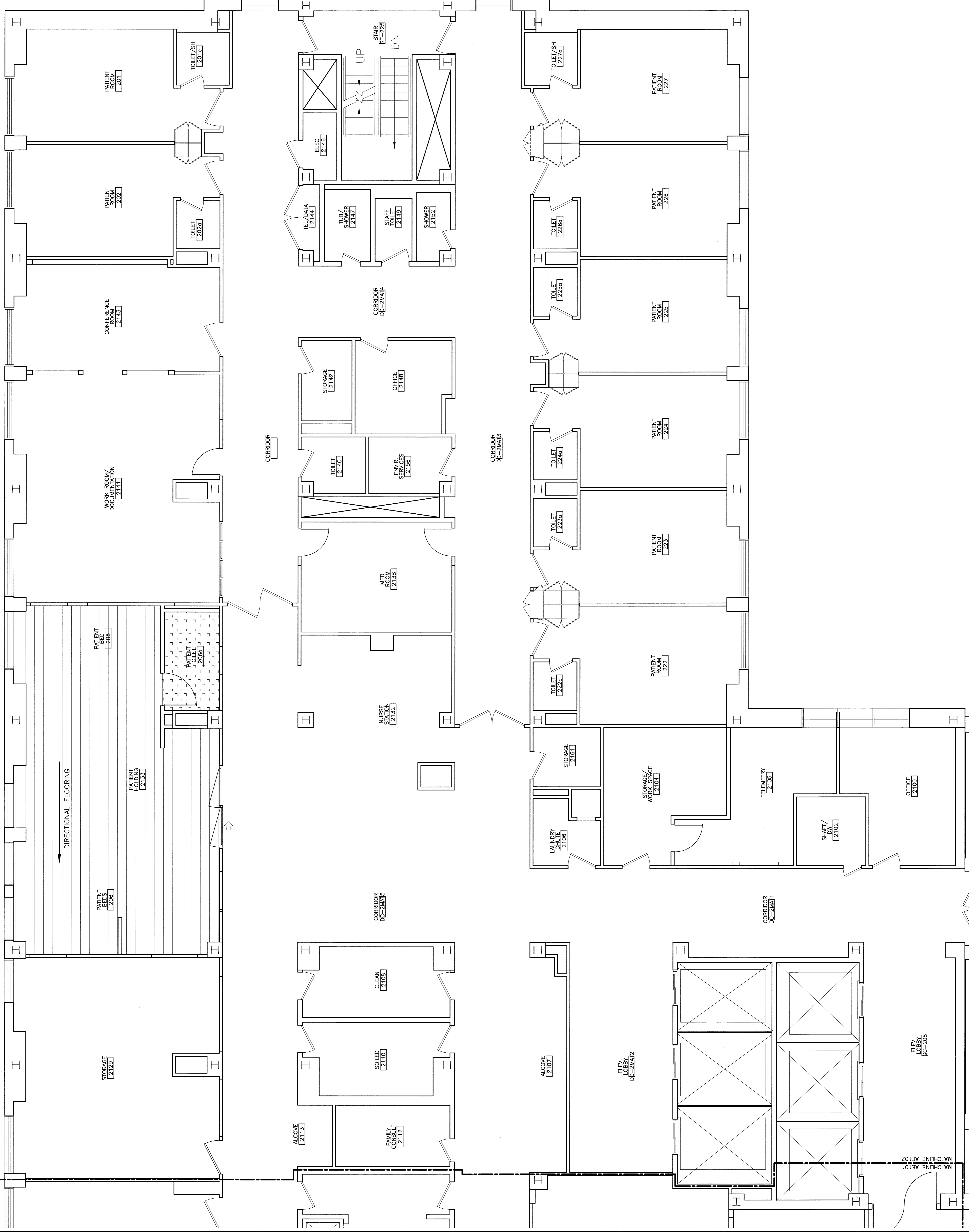


MATCHLINE A-E101
MATCHLINE A-E102



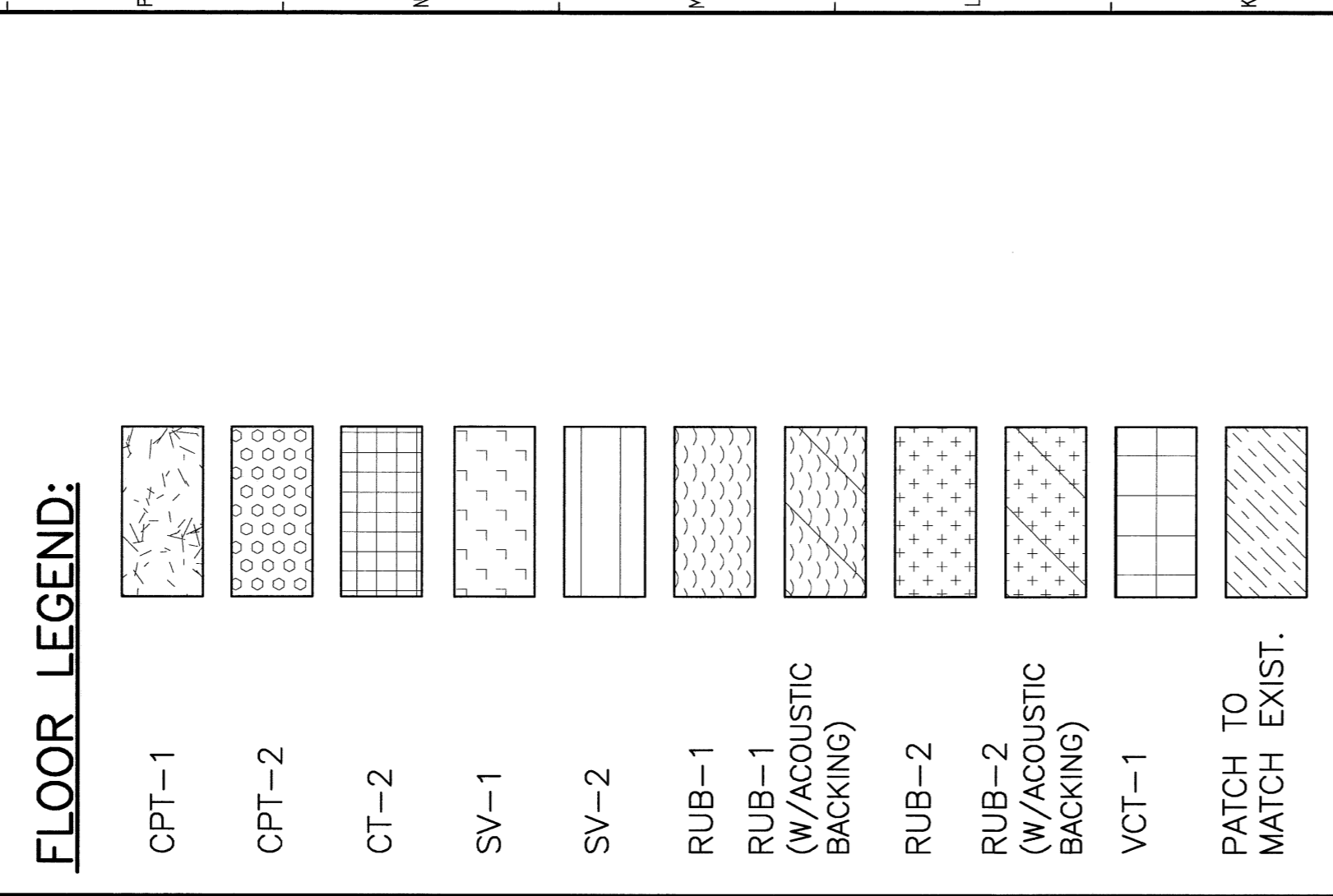
A1

1/2"=1'-0"

PARTIAL FINISH FLOOR PLAN

GENERAL NOTES:

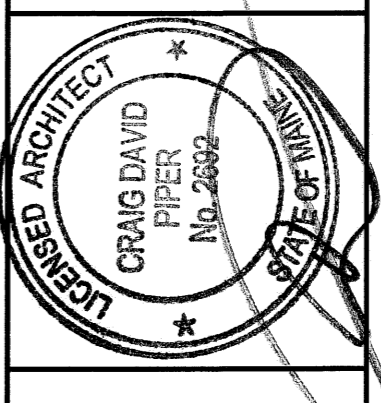
1. RE-LOC FLOOR PLAN GENERAL NOTES, KEY NOTES, REVISIONS, APPROPRIATIONS AND ADDITIONAL INFORMATION ABOUT FINISHES.
2. REFER TO THIS SHEET FOR LAYOUT OF FLOOR FINISH MATERIALS. REFER TO ROOM FINISH SCHEDULE FOR ACTUAL MATERIALS USED.
3. ALL NEW FLOORING MATERIAL TO RUN BENEATH CASEWORK UNLESS NOTED OTHERWISE.
4. EACH SQUARE IN THE VCT TILE GRID REPRESENTS A 12"x12" TILE.
5. AREAS ON PLAN THAT DO NOT SHOW A DESIGNATED FLOOR FINISH ARE EXISTING FINISHES TO REMAIN.



REV.	ISSUED FOR CONSTRUCTION	DESCRIPTION	DATE
0			9-12-08

ISSUED FOR CONSTRUCTION
9-12-08

CURRENT ISSUE STATUS:



144 Fore Street, P.O. Box 618
Portland, Maine 04104
Tel: (207) 772-2846
Fax: (207) 772-2847
www.craigpiper.com

SMRTI
ARCHITECTURE
ENGINEERING
PLANNING
INTERIOR DESIGN
COMMISSIONING

MAINE MEDICAL CENTER - RICHARDS WING 2ND FLOOR
INPATIENT SERVICES
PORTLAND, MAINE

PARTIAL FINISH FLOOR PLAN

SHEET TITLE	SCALE	DATE
PARTIAL FINISH FLOOR PLAN	1/4" = 1'-0"	9-12-08

PROJECT NUMBER	CDP	GRAPHIC SCALE
		0' 1'

JOB CADD NUMBER	CDP	CDP	SHEET No.
			AF102

DATE OF RECORD	CDP	CDP	PROJECT No.
			08103

PROJECT No. 08103