

# Common Area Renovations

## Ground Floor Pavilion A

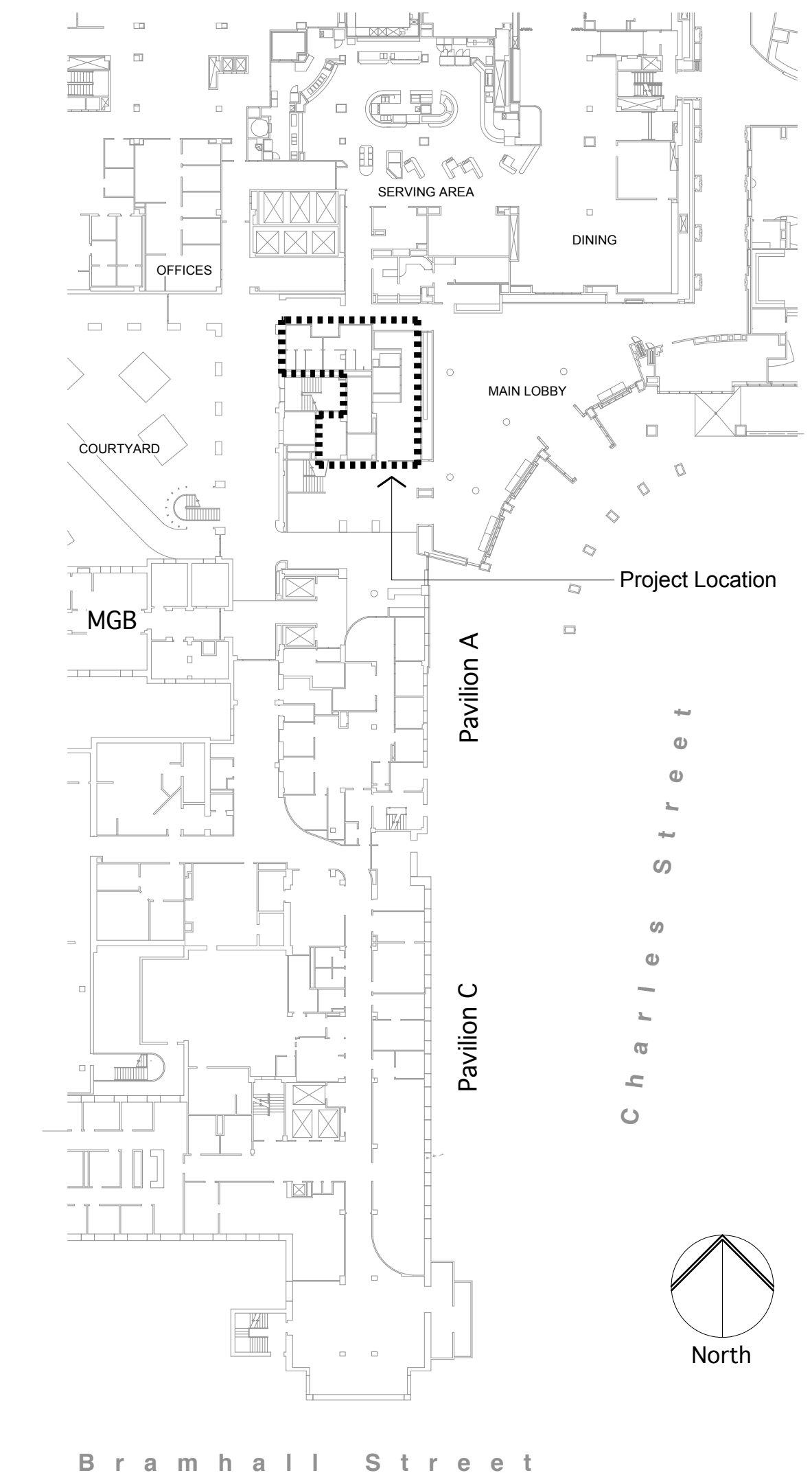
### Maine Medical Center

### Portland, Maine 04102

#### Architect

Winton Scott Architects  
5 Milk Street  
Portland, Maine 04101

207-774-4811



Project Location Diagram

#### Abbreviations

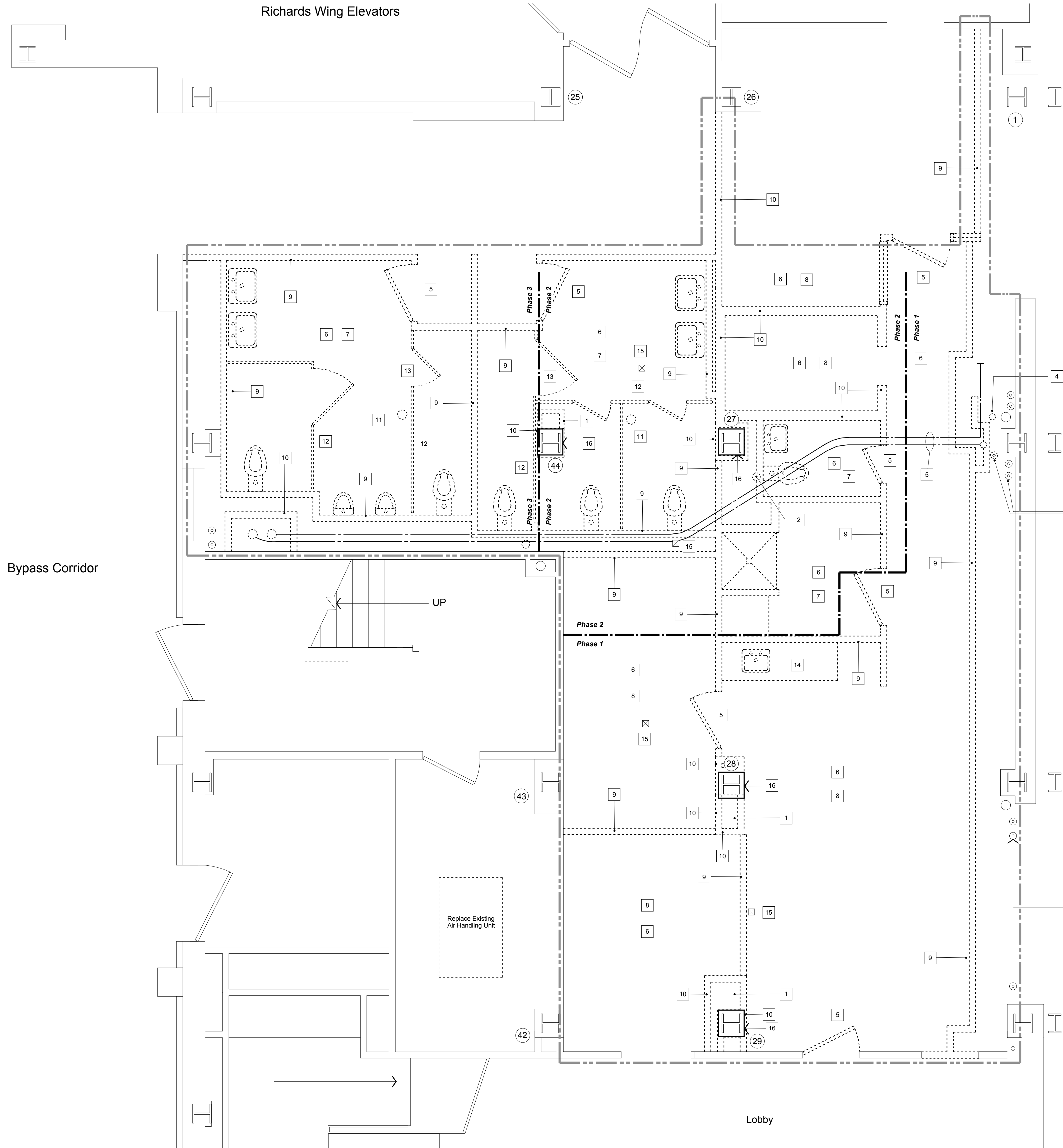
AB	Anchor Bolt	CEM	Cement	DWG	Drawing	GWB	Gypsum Wall Board	KIT	Kitchen	NOM	Nominal	REFR	Refrigerator	THK	Thick
ABV	Above	CI	Cast Iron	EA	Each	GYP BD	Gypsum Board	LAM	Laminated	NTS	Not To Scale	REINF	Reinforce, Reinforcing	THR	Threshold
ACT	Acoustical Ceiling Tile	CJ	Control Joint	EL	Elevation	HC	Handicapped, Hollow Core	LAV	Lavatory	OA	Overall	REQD	Required	THRU	Through
ADJ	Adjustable, Adjacent	CL	Center Line	ELEC	Electrical	HDF	High Density Fiberboard	LF	Linear Feet	OC	On Center	RL	Rain Leader	TOC	Top of Concrete
AFF	Above Finished Floor	CLG	Ceiling	ELEV	Elevator, Elevation	HDW	Hardware	LP	Low Point	OD	Outside Diameter	RM	Room	TOS	Top Of Steel
AHU	Air Handling Unit	CLO	Closet	EQ	Equal	HDWD	Hardwood	LPL	Low Pressure Laminate	OH	Overhead	RO	Rough Opening	TP	Toilet Paper
ALT	Alternate	CLR	Clear	EQ	Equal	HM	Hollow Metal	MAS	Masonry	OPNG	Opening	RUB	Rubber	TR	Tack Rail
ALUM	Aluminum	CMT	Ceramic Mosaic Tile	EXH	Exhaust	HORIZ	Horizontal	MAT	Material	OPP	Opposite	SC	Solid Core	TYP	Typical
AP	Access Panel	CMU	Concrete Masonry Unit	EXIST	Existing	HP	High Point	MAX	Maximum	OS	Outside	SECT	Section	T&B	Top And Bottom
ARCH	Architectural	COL	Column	EXP	Expansion	HPDL	High Pressure Decorative Laminate	MDF	Medium Density Fiberboard	PARTN	Partition	SF	Square Feet	T&G	Tongue And Groove
@	At	COMP	Compressible	EXT	Exterior	HR	Hour	MDO	Medium Density Overlay	PB	Particle Board	SHF	Shelf	UC	Undercut
B	Basement, Base	CONC	Concrete	FC	Fire Code	HT	Height	MECH	Mechanical	PC	Precast	SHT	Sheet	UV	Unit Ventilator
BB	Bulletin Board	CONST	Construction	FCH	Furring Channel	HTG	Heating	MFR	Manufacturer	PLAM	Plastic Laminate	SHTH	Sheathing	V	Vinyl, Vent
BD	Board	CONT	Continuous	FD	Floor Drain	HW	Hot Water	MH	Man Hole	PL	Plate	SIM	Similar	VB	Vapor Barrier
BET	Between	COORD	Coordinate	FE	Fire Extinguisher	ID	Inside Diameter	MIN	Minimum	PLYWD	Plywood	SPECS	Specifications	VCT	Vinyl Composition Tile
BEV	Beveled	CPT	Carpet	FFE	Finish Floor Elevation	INCL	Inclusive	MIR	Mirror	PPB	Prefinished Particle Board	SQ	Square	VERT	Vertical, Vertically
BIT	Bituminous	CT	Ceramic Tile	FIN	Finished	INS	Insulation	MISC	Miscellaneous	PREFIN	Prefinished	SST	Stainless Steel	VEST	Vestibule
BLDG	Building	CTSK	Countersunk Screw	FL	Flush	INT	Interior	MLDG	Molding	PT	Pressure Treated	STD	Standard	VWC	Vinyl Wall Covering
BLKG	Blocking	CUH	Cabinet Unit Heater	FLR	Floor	INV	Invert	MO	Masonry Opening	PTD	Painted	STL	Steel	WB	White Board
BM	Bench Mark, Beam	DBL	Double	FLSHG	Flashing	IS	Inside	MR	Moisture Resistent	QT	Quarry Tile	STO	Storage	WC	Water Closet
BOT	Bottom	DF	Drinking Fountain	FSR	Flexible Sheet Roofing	JC	Janitors Closet	MTG	Mounted, Mounting	R	Radius, Riser	STRUCT	Structure, Structural	WD	Wood
BRK	Brick	DH	Double Hung	GA	Gauge	JST	Joist	MTL	Metal	RAD	Radiator	SUP	Support	W/	With
C	Course	DIA	Diameter	GALV	Galvanized	JT	Joint	NAT	Natural	RC	Resilient Channel	SUSP	Suspended	W/O	Without
CAB	Cabinet	DIM	Dimension	GB	Grab Bar	NIC	Not In Contract	NO	Number	RD	Roof Drain	SYM	Symmetrical	TEMP	Tempered
CAP	Capacity	DRW	Drawer	GC	General Contractor					REF	Reference	T	Tread		
CB	Chalk Board, Catch Basin	DTL	Detail	GL	Glass							TB	Tackboard		
		DW	Dishwasher									TEMP	Tempered		

Release Date: November 16, 2007

#### Drawing List

Sheet Name	Number
Demolition Plan	D 1.1
Overall Floor Plan	A 1.1
Basement Plan	A 1.2
Lobby Roof Plan	A 1.3
Schedules & Ceiling Plan	A 2.1
Interior Elevations	A 3.1
Interior Details	A 3.2
Electrical Plans	E 1.1

Richards Wing Elevators



Bypass Corridor

UP

Replace Existing Air Handling Unit

Lobby

Removals Notes

- 1 Relocate plumbing and conduits in this chase.
- 2 Relocate existing waste stack.
- 3 Relocate existing heating piping riser to location show.
- 4 Remove existing discontinued pneumatic tubes to below floor line. Patch concrete slab to match existing.
- 5 Remove door and frame.
- 6 Remove ACT ceiling in this room.
- 7 Remove existing ceramic floor tile in this room. Prepare slab for proposed floor finish.
- 8 Remove existing carpet in this room. Prepare slab for proposed floor finish.
- 9 Remove metal stud drywall partition. Patch floor and adjacent walls to match existing.
- 10 Remove 4" CMU partition or column enclosure. Cut dovetails to floor line. Patch floor and adjacent walls to match existing.
- 11 Remove existing floor drain. Fill existing surrounding slab depression with latex/portland patching mix.
- 12 Remove existing toilet partitions.
- 13 Remove existing suspended steel channel.
- 14 Remove existing counter and cabinets.
- 15 Core slab for proposed floor drain. Grind 24" dia. area of surrounding slab for 1/4" recess at drain.
- 16 Provide 2 hour fire rated drywall column enclosure per detail.

Code Information

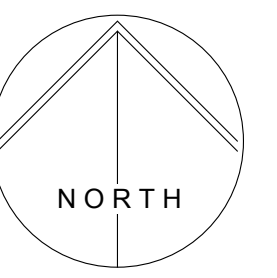
Construction Type: NFPA Type II (222) / IBC 1B  
 - Exterior Columns Concrete Encased  
 - Interior Columns Protected  
 - Beams Concrete Encased  
 Supervised Sprinkler System

GA FILE NO. CM 2120	GENERIC	2 HOUR FIRE
STEEL STUDS, GYPSUM WALLBOARD		
<small>Base layer 1/2" type X gypsum wallboard or gypsum veneer base applied to 1 1/2" steel studs located at each corner of 10"x10" column with 1" Type S screws 24" o.c. Face layer 1/2" type X gypsum wallboard or gypsum veneer base applied to studs with 1/2" Type S drywall screws 12" o.c. 1 1/2" metal corner bead applied with 60 coated nails, 1/2" long, 0.0319" thick, 1/4" heads, 12" o.c. in each flange.</small>		
DRYWALL ENCLOSURES AT COLUMNS (27) (28) (29) (44)		
Fire Test:		UL R2717.34, 5-15-64, ULC Design K517, ULC Design Z503

Heating risers to remain typical.

Scope of Work Narrative

1. Phase 1: Construct Womens Room in space formerly occupied by the Emergency Department Locker Room.
2. Phase 2: Construct Mens Room in space formerly occupied by the Womens Room.
3. Phase 3: Construct Public Services Alcove in space formerly occupied by the Mens Room.
4. Provide temporary partition between construction area and existing occupied spaces or corridors throughout the duration of the project. Partition shall be 3 5/8" metal studs @ 16" O.C. with 5/8" GWB each side. On public side of partition, provide duct tape at joints and paint finish.



MMC  
Common Area  
Renovations

Maine Medical Center  
Portland, Maine 04102

Architect

Winton Scott Architects

Portland, Maine  
04101

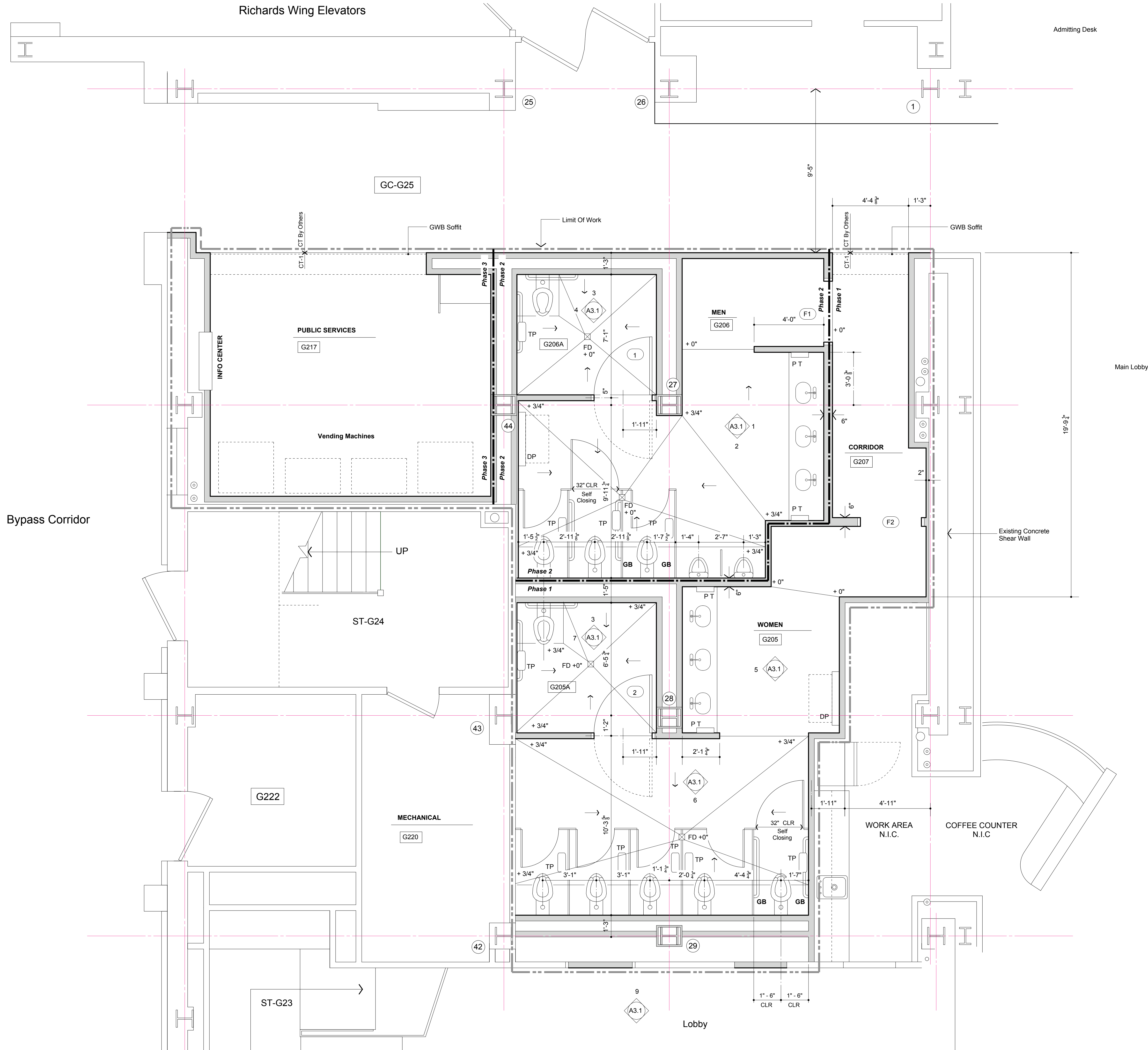
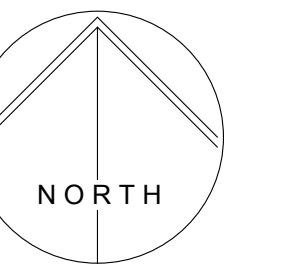
Removals Plan

D 1.1

Scale: 3/8" = 1' - 0"  
November 16, 2007

Richards Wing Elevators

Admitting Desk



Bypass Corridor

Main Lobby

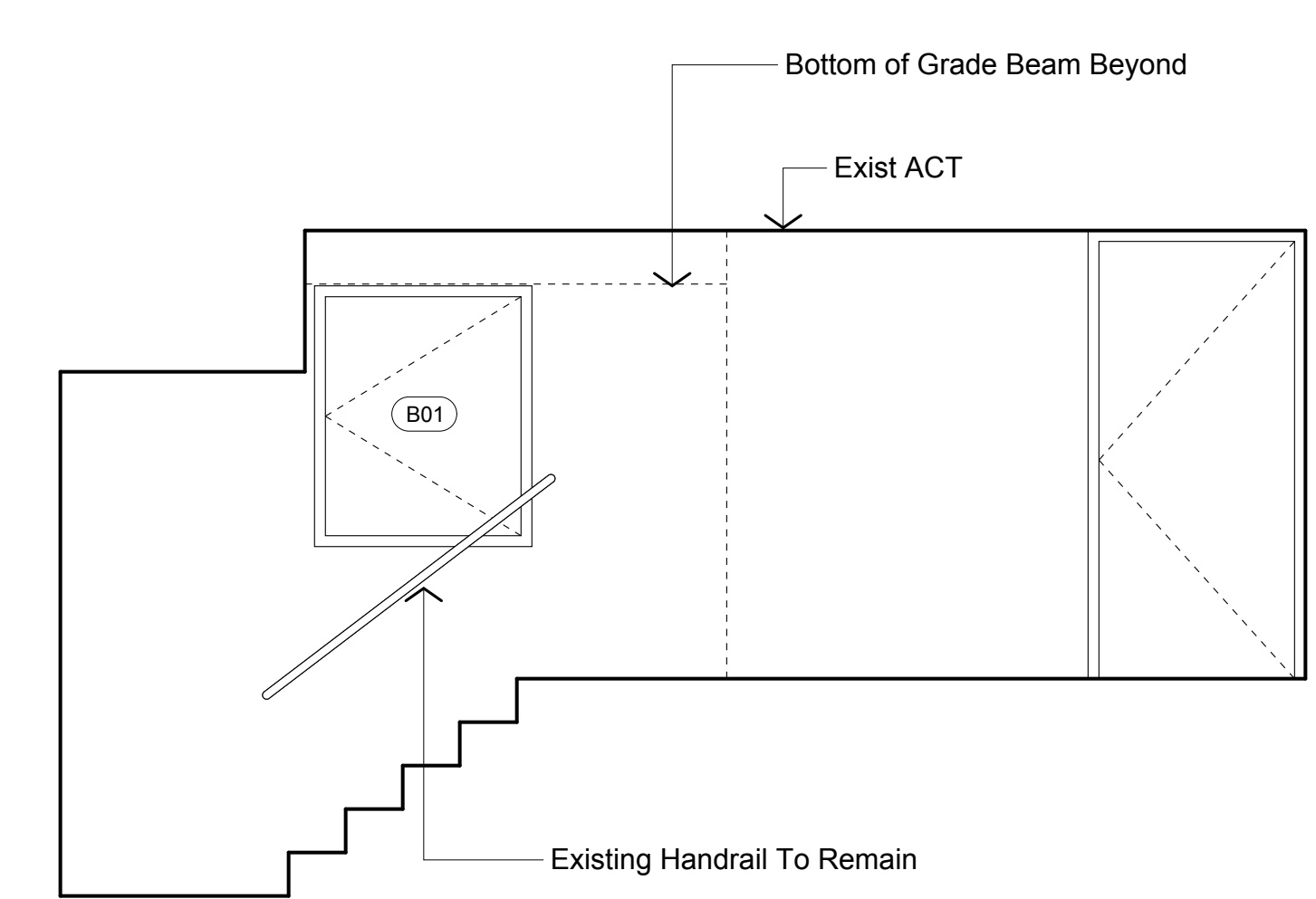
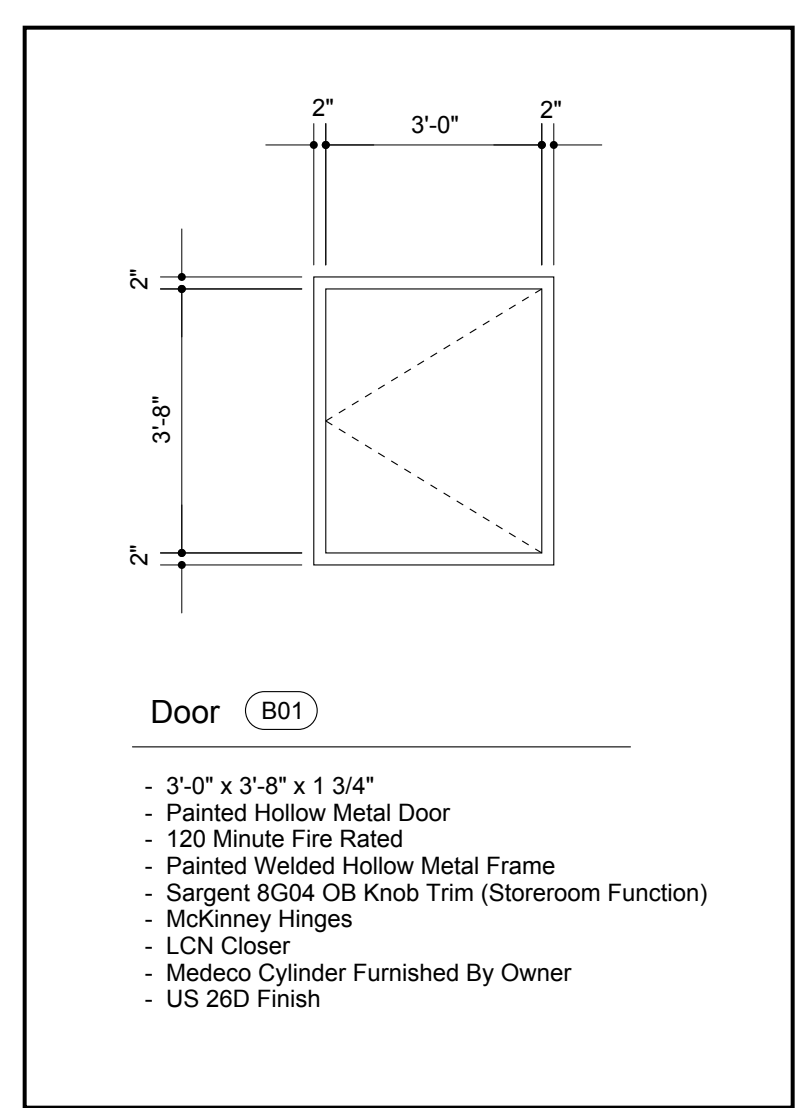
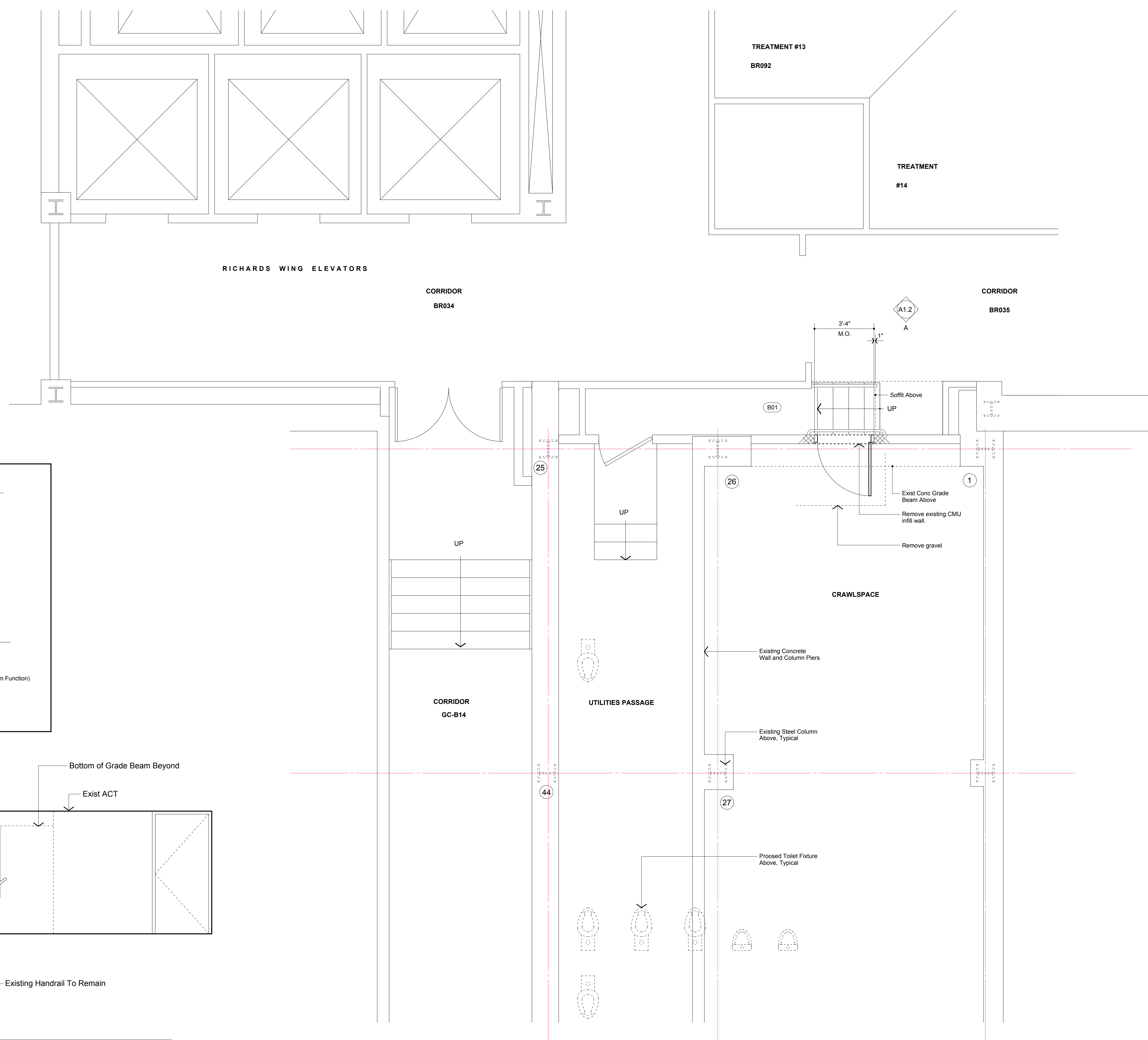
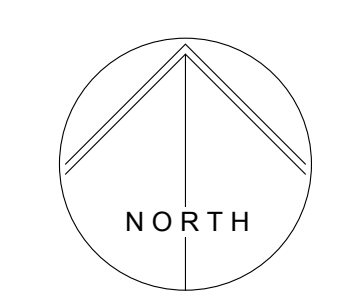
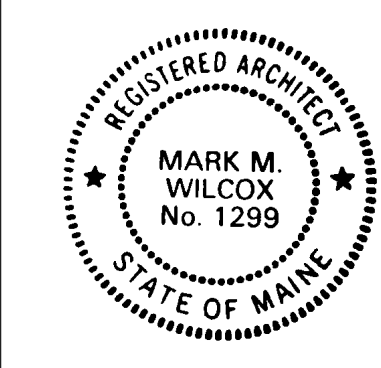
MMC  
Common Area  
Renovations

Maine Medical Center  
Portland, Maine 04102

Architect  
Winton Scott Architects  
Portland, Maine  
04101

Floor Plan  
**A 1.1**

Scale: 3/8" = 1' - 0"  
November 16, 2007



**A** Crawlspace Access Door Elevation  
3/8" = 1' - 0"

MMC  
Common Area  
Renovations

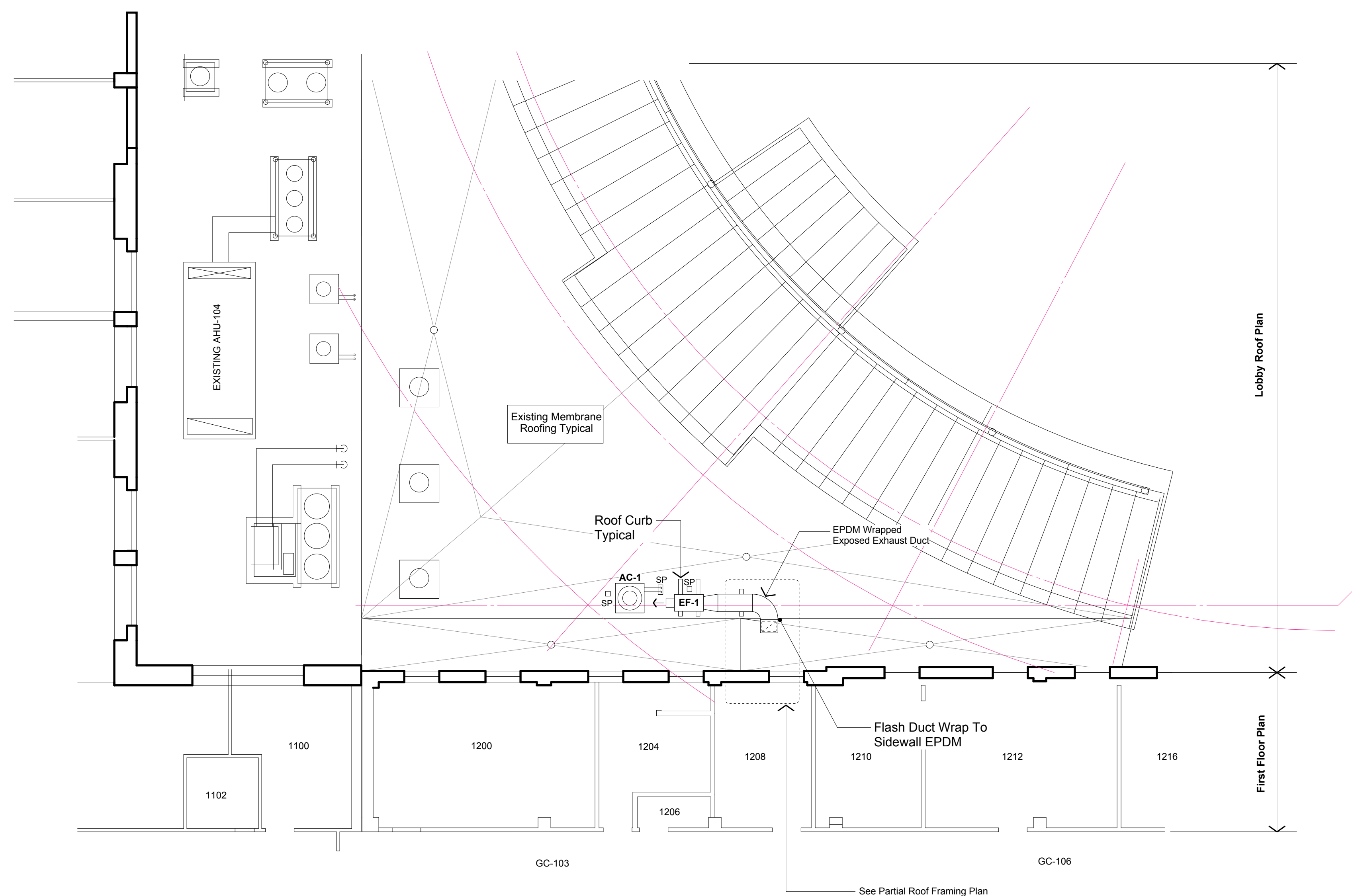
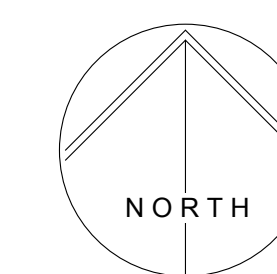
Maine Medical Center  
Portland, Maine 04102

Architect  
Winton Scott Architects  
Portland, Maine  
04101

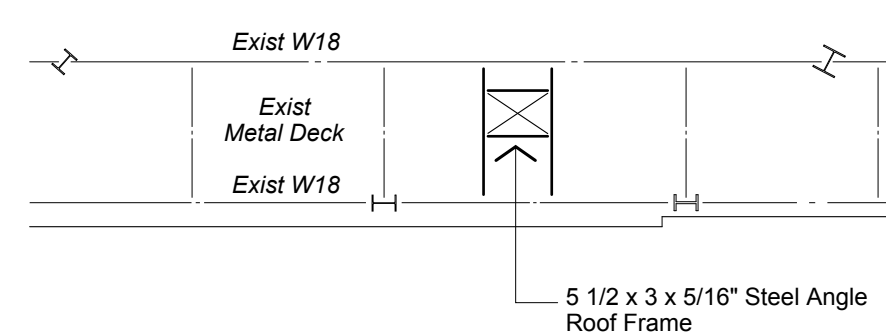
Basement  
Floor Plan  
**A 1.2**

Scale: 3/8" = 1' - 0"  
November 16, 2007





**Lobby Roof Plan**  
1/8" = 1' - 0"



**Partial Roof Framing Plan At Exhaust Duct**  
1/8" = 1' - 0"

**Legend**

- SP □ Sealant Pan For Piping / Power
- AC Air Cooled Condensing Unit By Mech
- EF Exhaust Fan By Mech

**Notes**

1. Provide pressure treated wood for curbs.
- 2.
- 3.

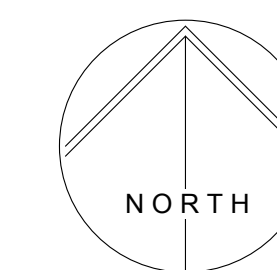
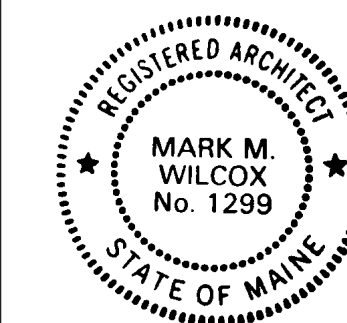
**MMC  
Common Area  
Renovations**

Maine Medical Center  
Portland, Maine 04102

Architect  
Winton Scott Architects  
Portland, Maine  
04101

**Roof Plan  
A 1.3**

Scale: As Shown  
November 16, 2007



MMC  
Common Area  
Renovations

Maine Medical Center  
Portland, Maine 04102

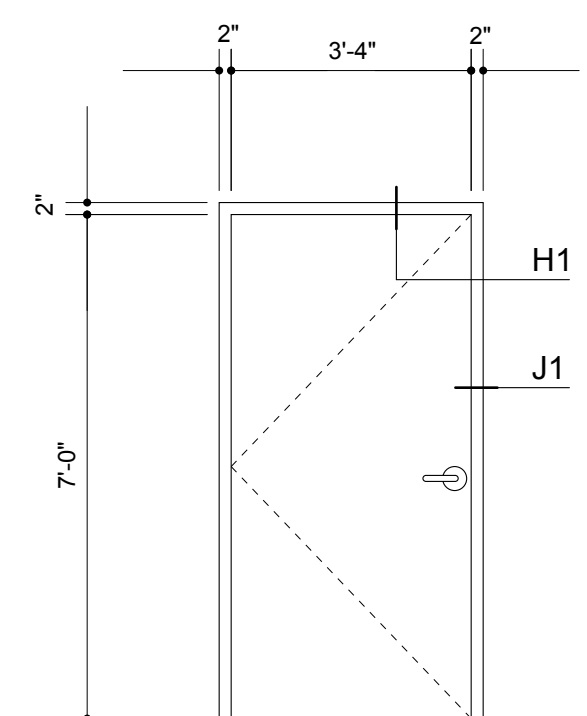
Architect  
Winton Scott Architects

Portland, Maine  
04101

Schedules &  
Ceiling Plan

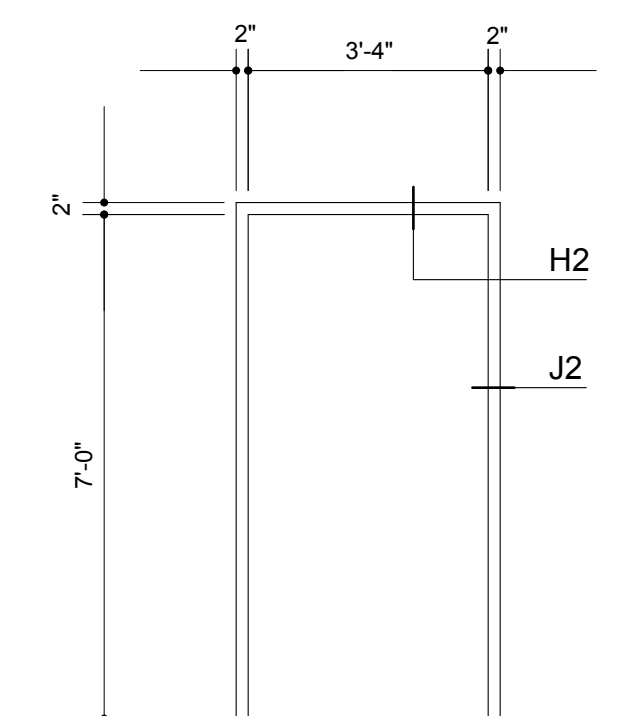
A 2.1

Scale: 1/4" = 1' - 0"  
November 16, 2007



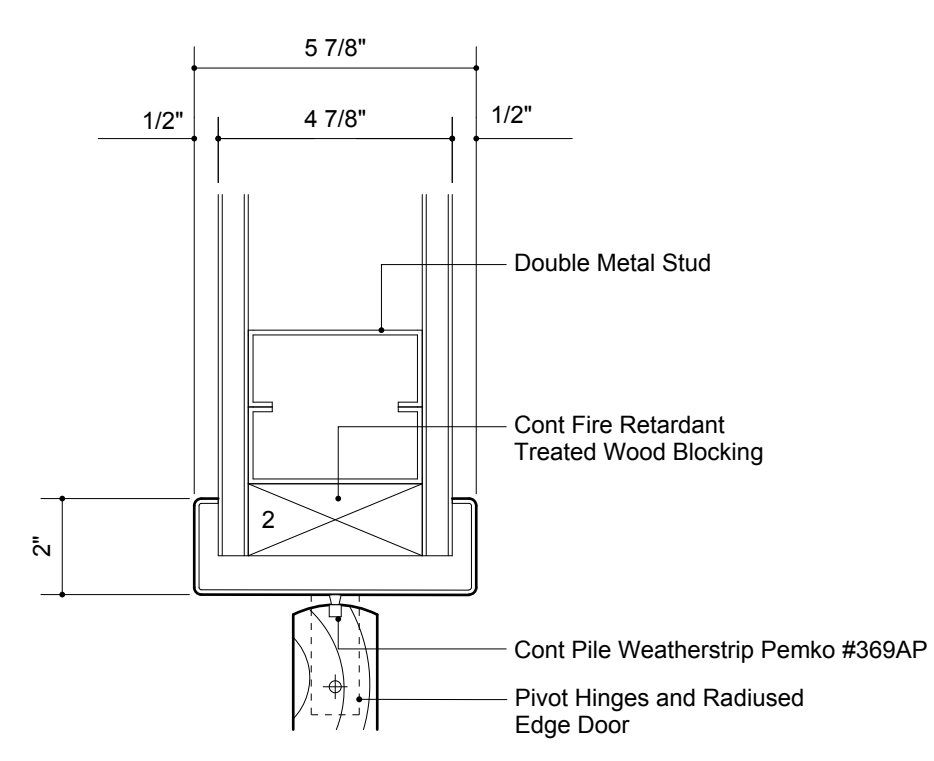
Doors 1 & 2

- 3'-4" x 7'-0" x 1 3/4"
- Plain Sliced Maple Slip Matched
- Clear Finish
- Prefit and Prefinished
- Provide Stain Samples To Architect
- Lifetime Warranty
- Painted Welded Hollow Metal Frame
- 1 Pr. Center Pivot Hinges
- Rescue Door Stop
- Sargent 10 Line Privacy Set
- Emergency Breakout Extended Double Lip Strike
- Wall Stop
- US 26D Finish
- Continuous Weatherstripping
- 1" Undercut
- (2) Coats Semi Gloss Finish

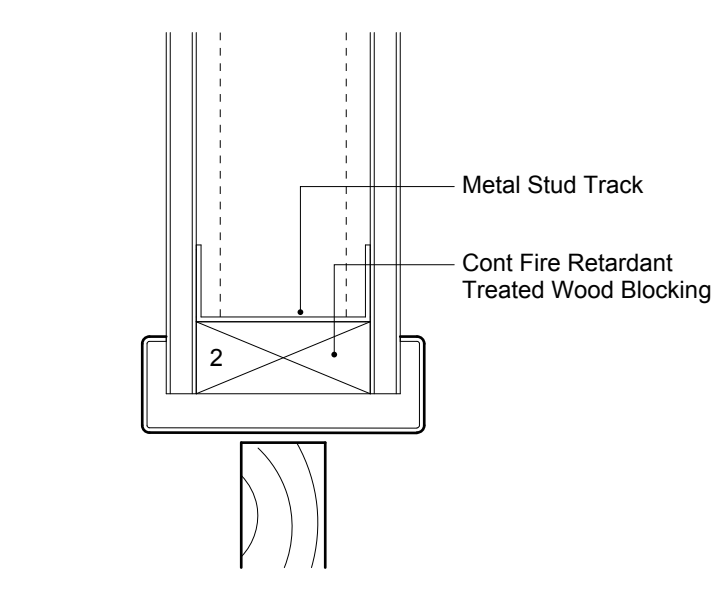


Frames F1 & F2

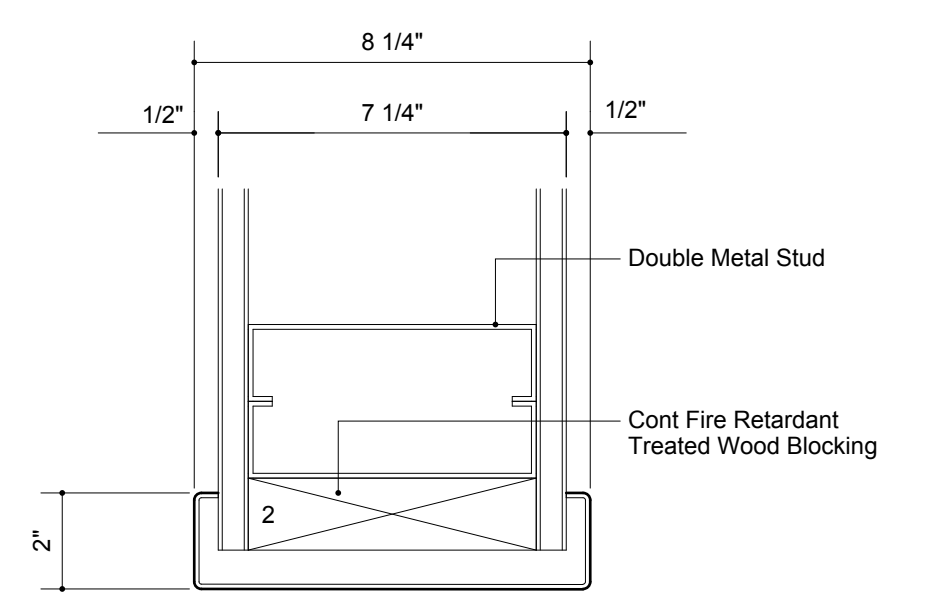
- 3'-4" x 7'-0"
- HM Cased Opening
- (2) Coats Semi-Gloss Finish



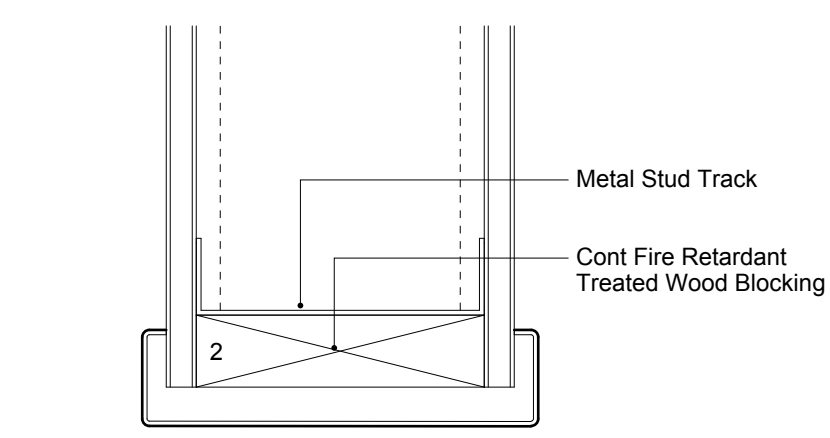
J 1 Door Jamb Detail  
3" = 1'-0"



H 1 Door Head Detail  
3" = 1'-0"



J 2 Frame Jamb Detail  
3" = 1'-0"



H 2 Frame Head Detail  
3" = 1'-0"



Reflected Ceiling Plan  
1/4" = 1' - 0"

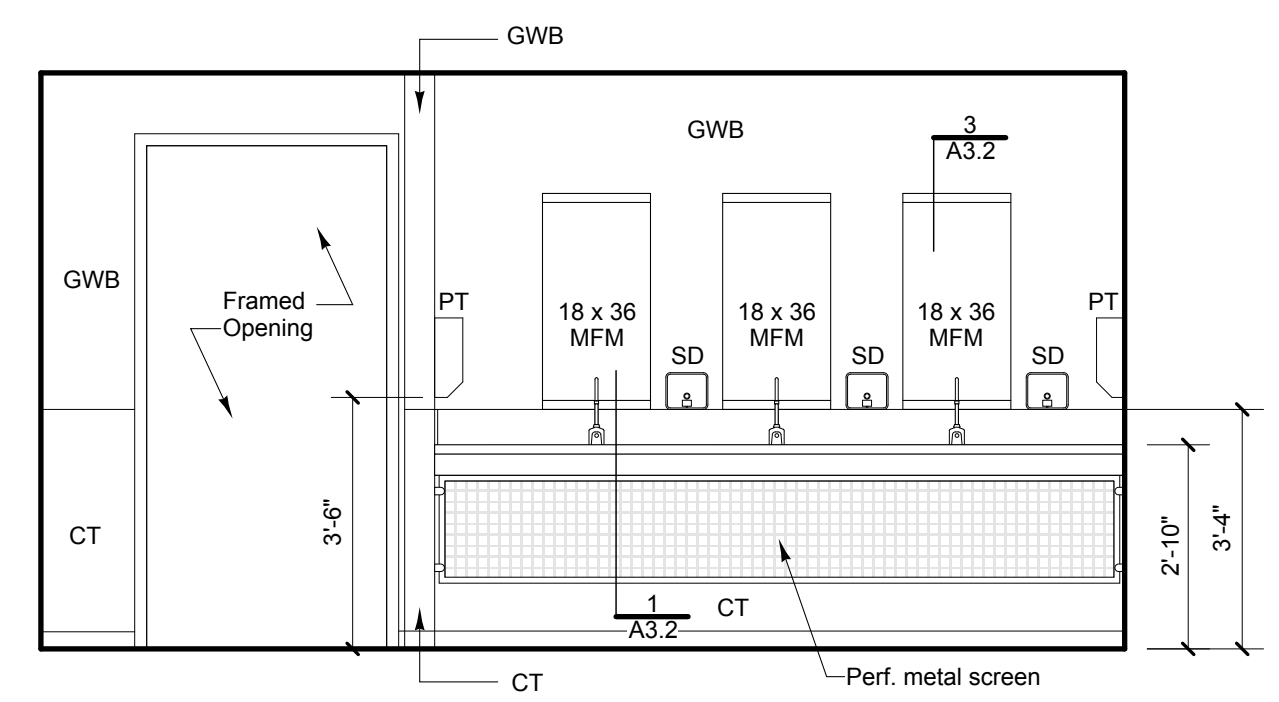
- Legend**
- Sprinkler Head
  - ⊗ Supply Air Grille
  - ⊘ Return or Exhaust Air Grille
  - ▨ Recessed Fluorescent Light Fixture
  - ⊙ Recessed Fluorescent Downlight
  - Ⓢ Smoke Detector
  - Ⓟ Paging System Speaker

**Room Finish Schedule**

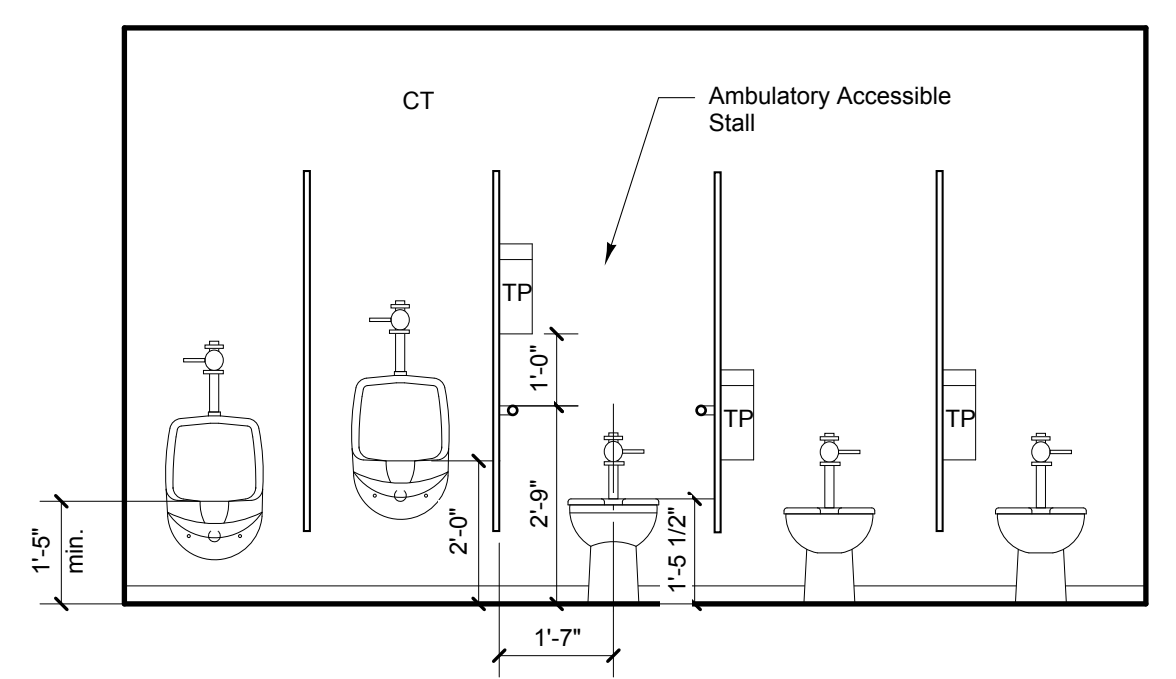
Room No.	Room Name	Floor	Base	Walls	Ceiling	Ceiling Ht.	Remarks
G205	WOMEN	CT-1	CT-1	CT-1/GWB-E	ACT-1	8'-0"	
G205A	WOMEN HC	CT-1	CT-1	CT-1/GWB-E	ACT-1	8'-0"	
G206	MEN	CT-1	CT-1	CT-1/GWB-E	ACT-1	8'-0"	
G206A	MEN HC	CT-1	CT-1	CT-1/GWB-E	ACT-1	8'-0"	
G207	CORRIDOR	CT-1	CT-1	GWB	ACT-1	8'-0"	
G217	PUBLIC SERVICES ALCOVE	CT-1	CT-1	GWB	ACT-1	8'-0"	

**Finish Schedule Legend**

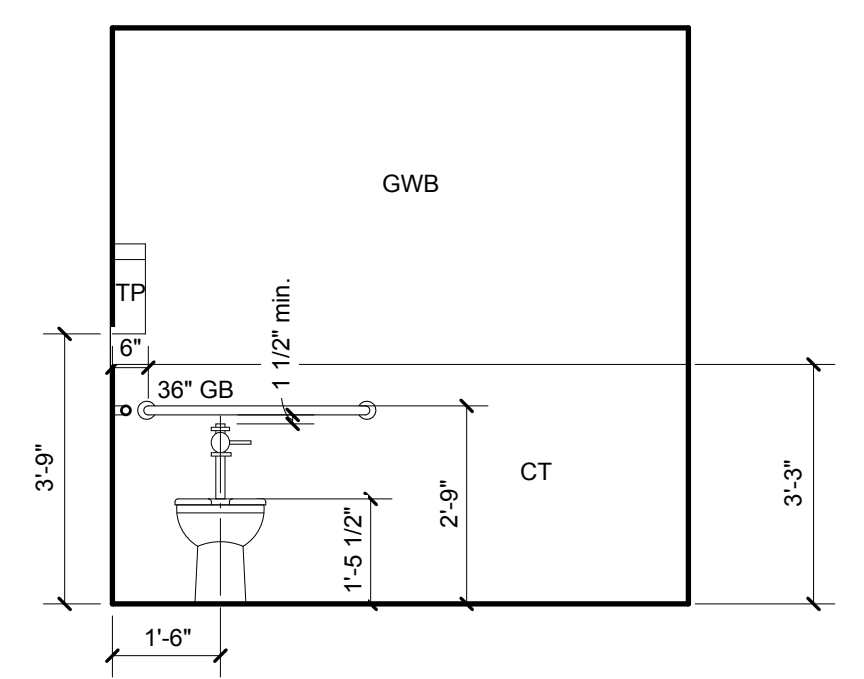
Key	Item	Product	Notes
ACT-1	Acoustic Ceiling Tile	Armstrong 2x2 Tegular Edge *Optima Open Plan Humiguard #3251*	9/16" Grid
CT-1	Porcelain Tile	American Olean Avila	Size As Shown
GWB-E	Gypsum Drywall	Moisture Resistant / Devoo *Tru-Glaze 4418* Satin Finish	Waterborne Acrylic Epoxy System



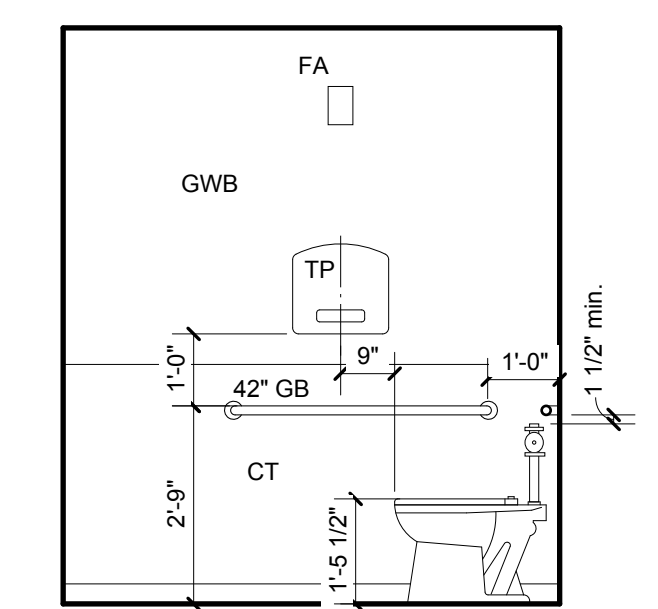
1 Men  
 3/8" = 1' - 0"



2 Men  
 3/8" = 1' - 0"



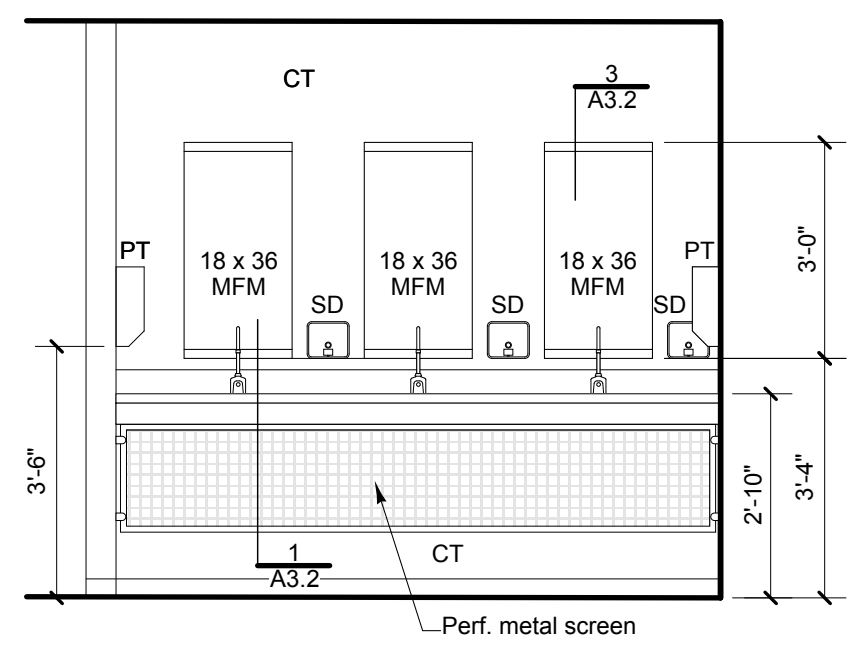
3 Men  
 3/8" = 1' - 0"



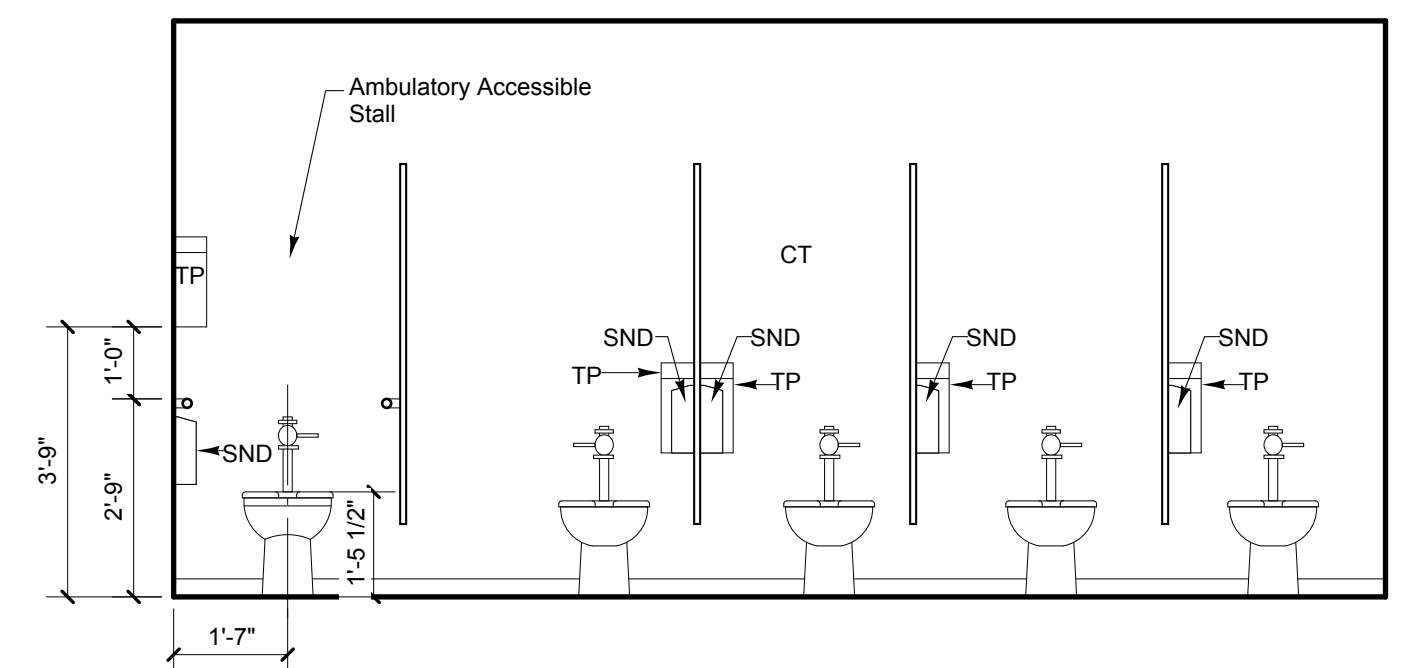
4 Men  
 3/8" = 1' - 0"

- GENERAL NOTES**
- 1 Provide solid blocking behind all wall mounted accessories.
  - 2 Refer to specifications and details for hardware descriptions.
  - 3 Dimensions are to face of finished wall, face of toilet partition, and edge of fixture/ accessory unless indicated otherwise. Contact architect if discrepancies are found.

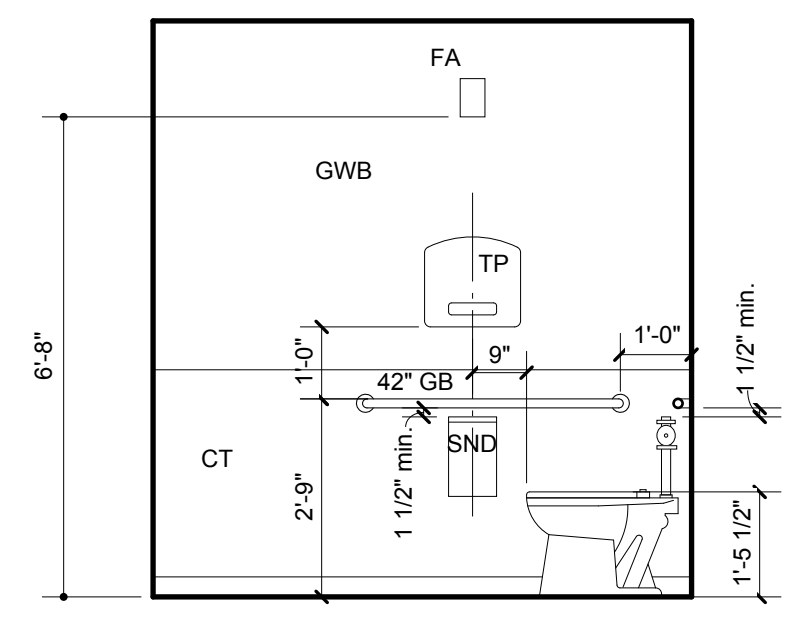
- LEGEND** See specifications for toilet accessories
- MFM.....Plate mirror w/ stainless steel U-channel at top & bottom
  - SD.....Wall mounted soap dispenser sim. to B-4112 by Bobrick.
  - GB.....36" grab bar
  - TP.....Toilet paper dispenser provided by Owner installed by G.C.
  - PT.....Paper towel dispenser provided by Owner installed by G.C.
  - SND.....Sanitary napkin disposal provided by Owner installed by G.C.
  - DC.....Wall mounted diaper changing station # KB1110-SSWM by Bobrick
  - CH.....Coak hook



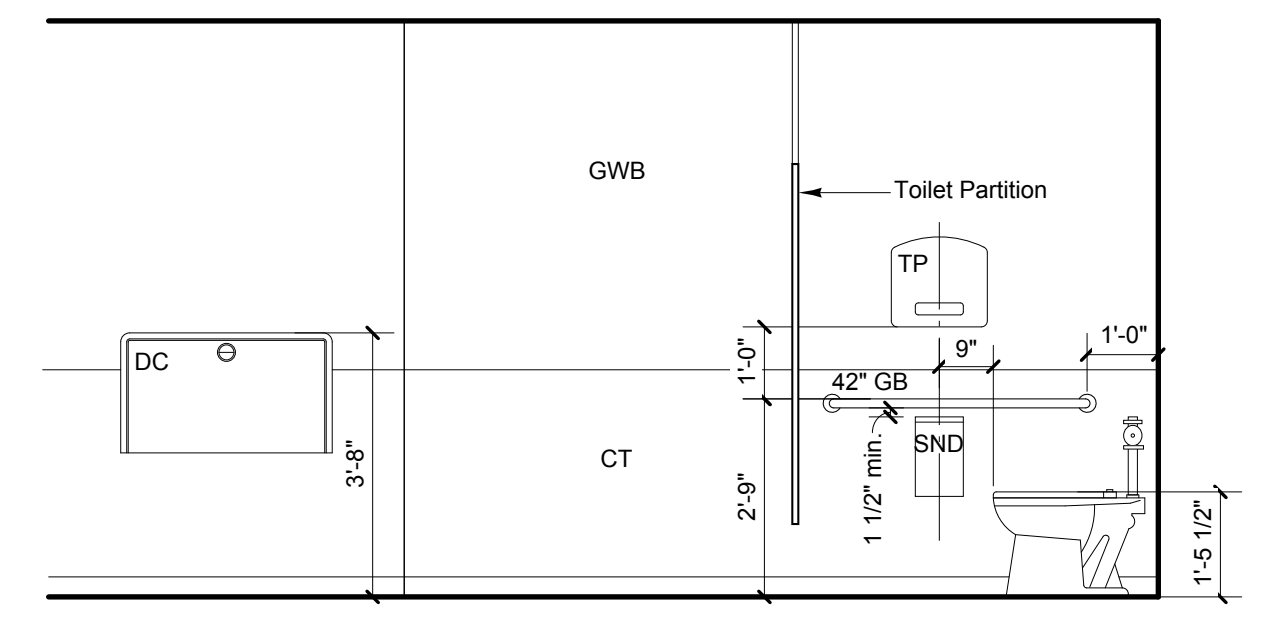
5 Women  
 3/8" = 1' - 0"



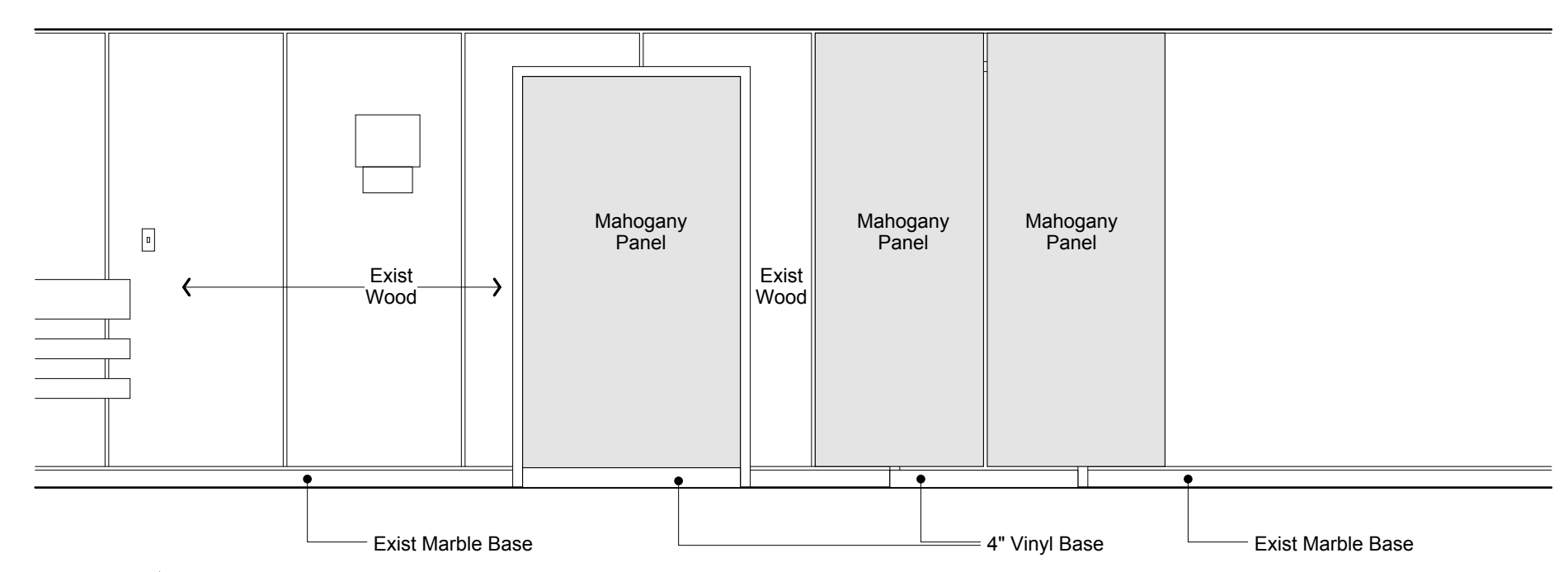
6 Women  
 3/8" = 1' - 0"



7 Women  
 3/8" = 1' - 0"



8 Women  
 3/8" = 1' - 0"



9 Lobby  
 3/8" = 1' - 0"

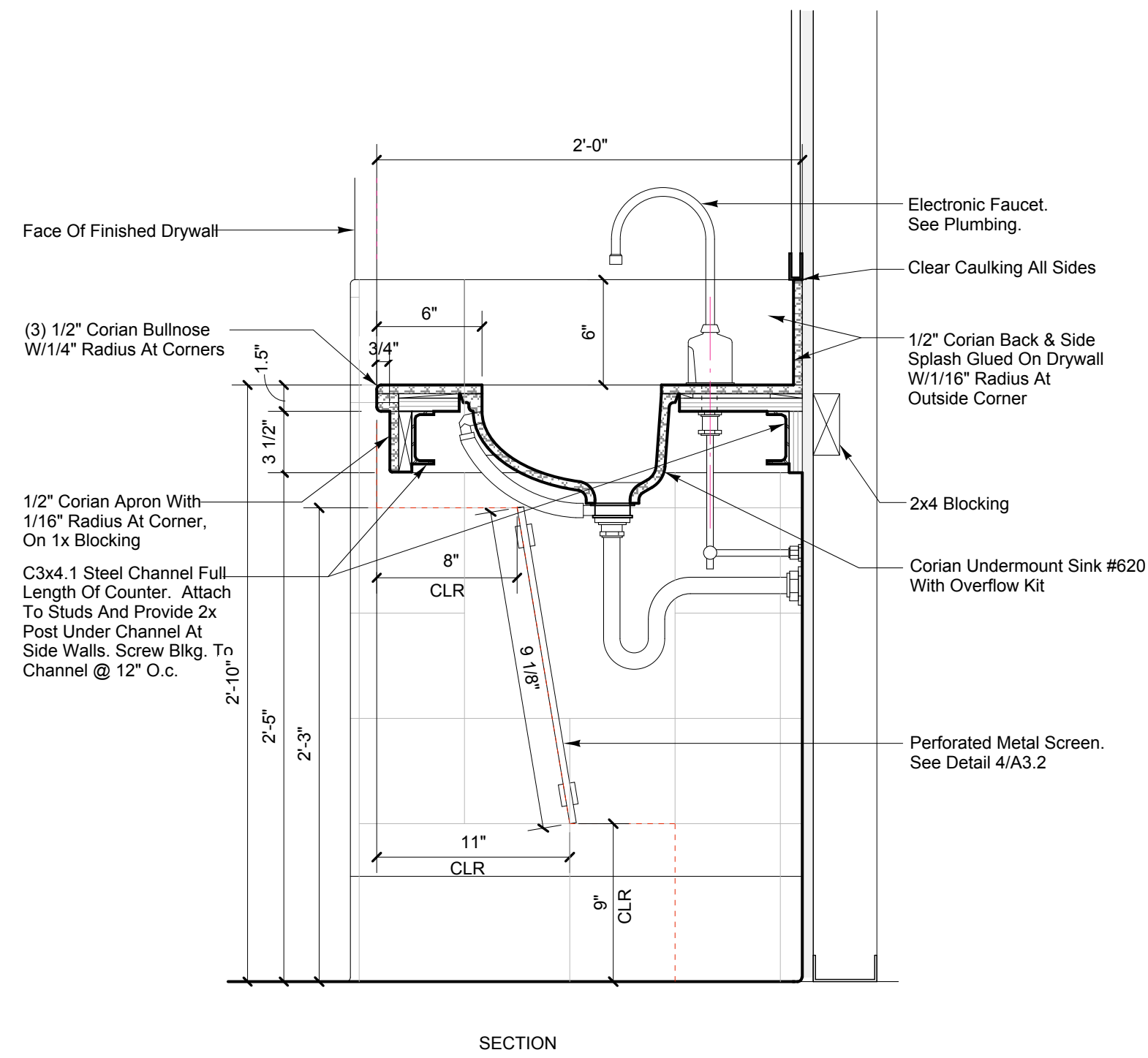
MMC  
 Common Area  
 Renovations

Maine Medical Center  
 Portland, Maine 04102

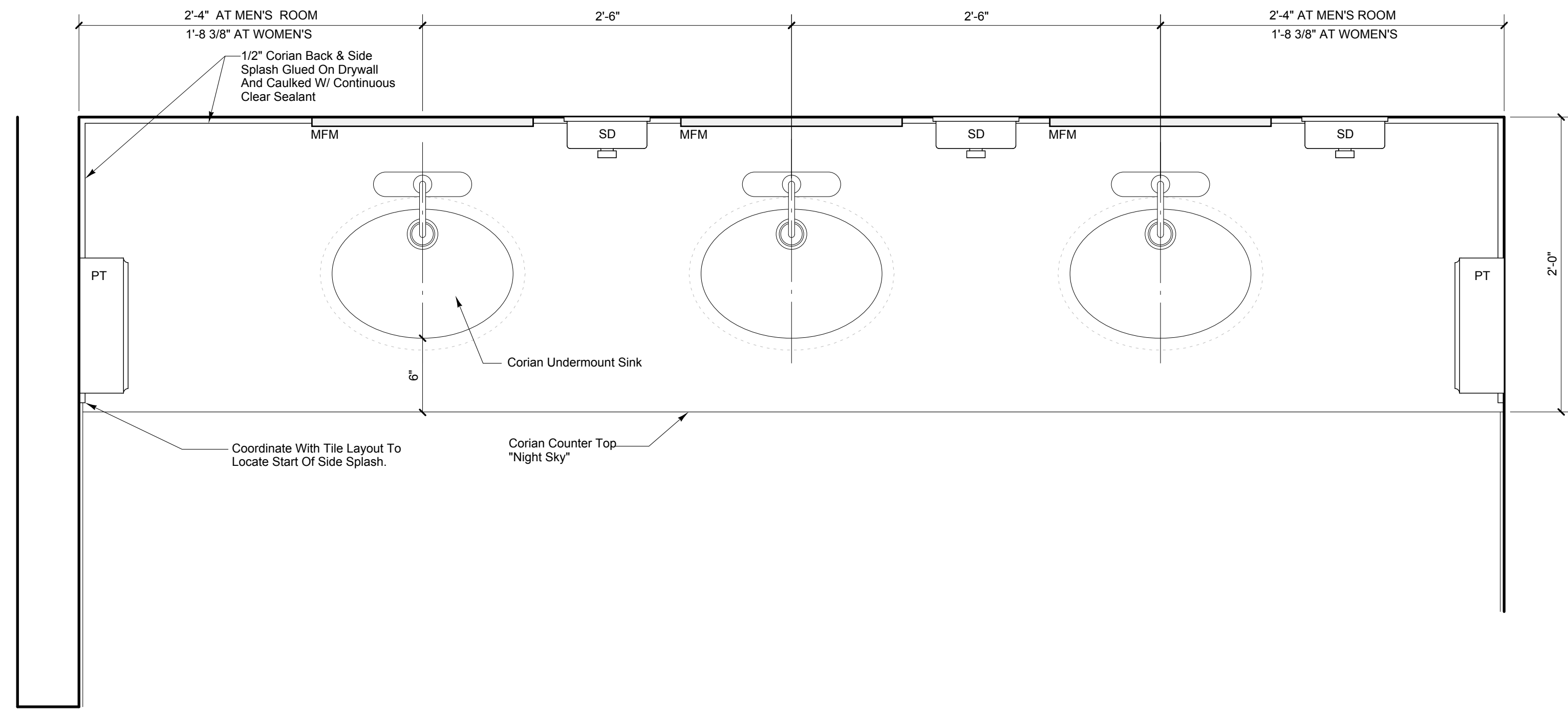
Architect  
 Winton Scott Architects  
 Portland, Maine  
 04101

Interior Elevations

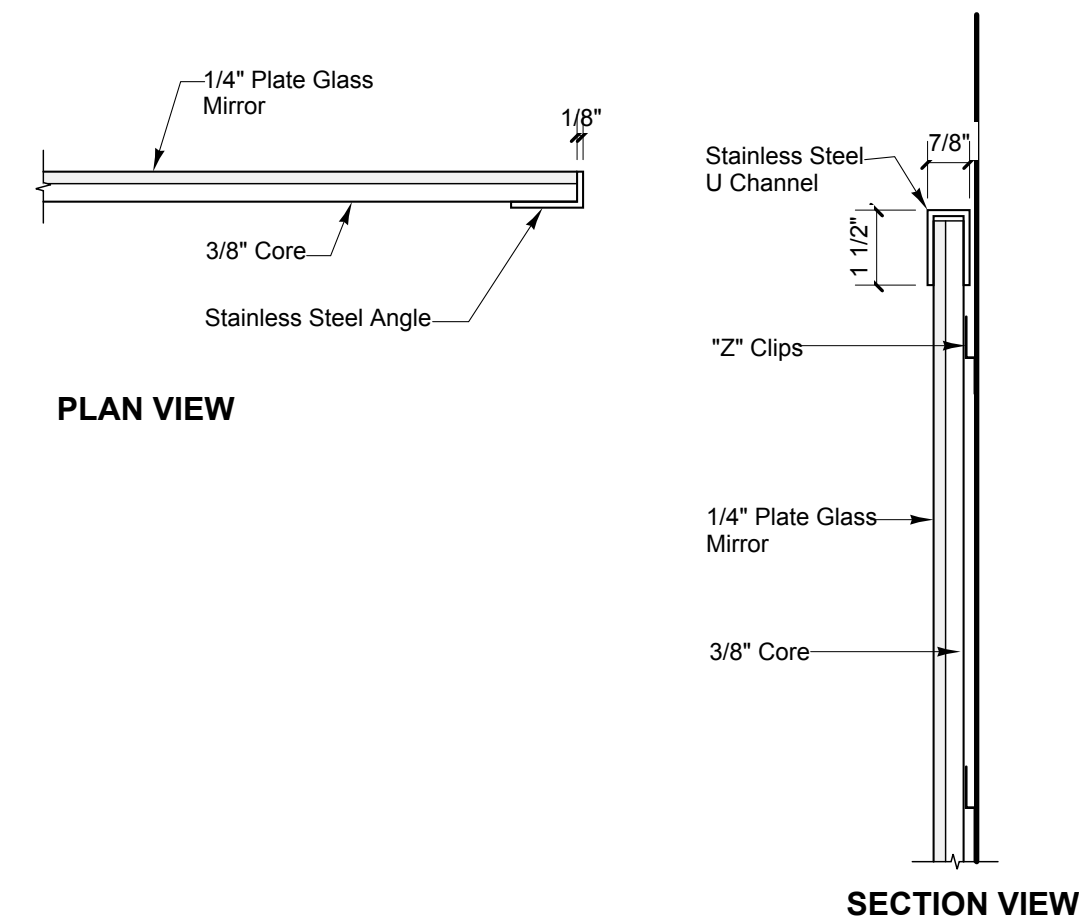
A 3.1



**1 SECTION @ COUNTER**  
SCALE: 1 1/2" = 1'-0"



**2 COUNTER ENLARGED PLAN**  
SCALE: 1 1/2" = 1'-0"



**3 MIRROR DETAIL**  
SCALE: 3" = 1'-0"

MMC  
Common Area  
Renovations

Maine Medical Center  
Portland, Maine 04102

Architect  
Winton Scott Architects

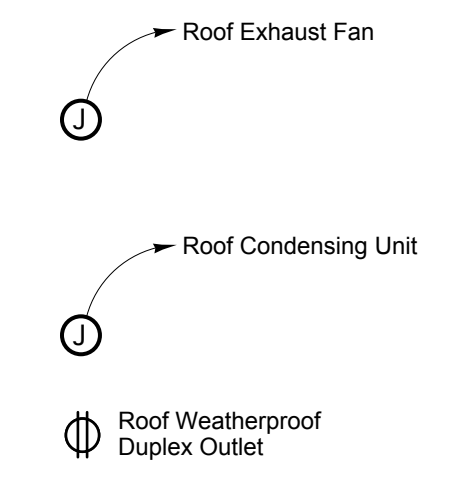
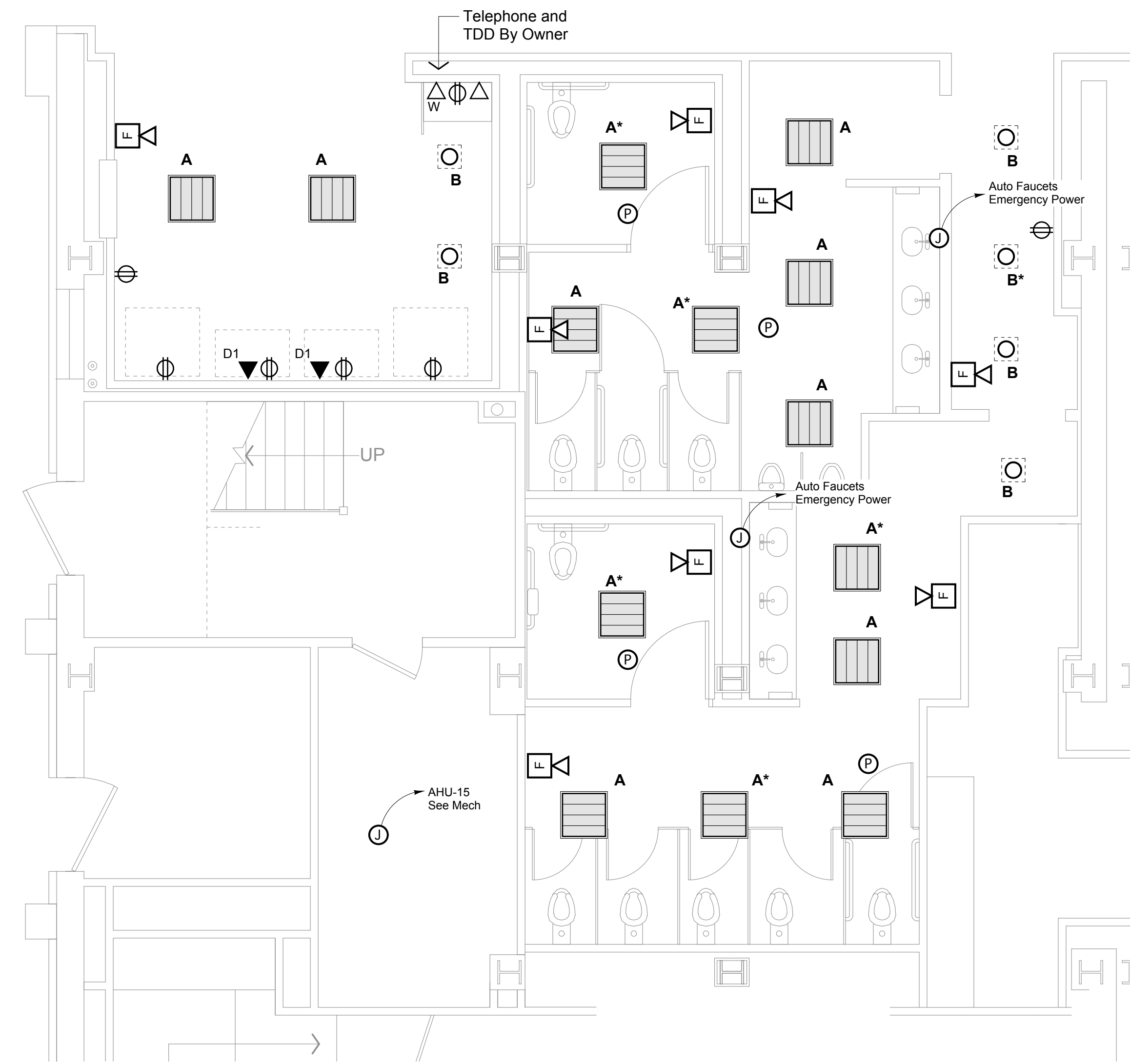
Portland, Maine  
04101

Interior Details

**A 3.2**

Scale: As Shown  
November 16, 2007





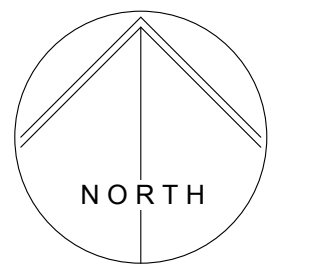
Electrical Plan  
1/4" = 1' - 0"

Legend

- Duplex Outlet @ 18" Aff Unless Otherwise Shown
- Emergency Power Duplex Outlet @ 18" Aff Unless Otherwise Shown
- Voice / Data Outlet @ 18" Aff
- Wall Phone Outlet @ Height Shown
- Data Outlet With Quantity Shown @ 18" Aff
- Pager
- Horn / Strobe Unit

Lighting Fixture Schedule

Mfr	Type	Model No.	Mounting	Lamping	Remarks
A	Lightolier Direct/Indirect Luminaire	QVH 2 G PF OS 2 FT 120 SB	Semi-Recessed	(2) 40W TT5	Wire to existing lighting circuits / Verify continuity At Fixture Type A* wire to emergency power circuit
B	Lightolier Downlight	1001F26U / 1001CD	Recessed	(1) 26W Quad	Wire to existing lighting circuits / Verify continuity At Fixture Type B* wire to emergency power circuit



MMC  
Common Area  
Renovations

Maine Medical Center  
Portland, Maine 04102

Architect  
Winton Scott Architects  
Portland, Maine  
04101

Electrical Plans  
E 1.1

Scale: 1/4" = 1' - 0"  
November 16, 2007