

PROJECT TITLE:  
**MAINE MEDICAL CENTER  
 RT RENOVATIONS PHASE 2**  
 22 BRAMHALL ST  
 PORTLAND, MAINE

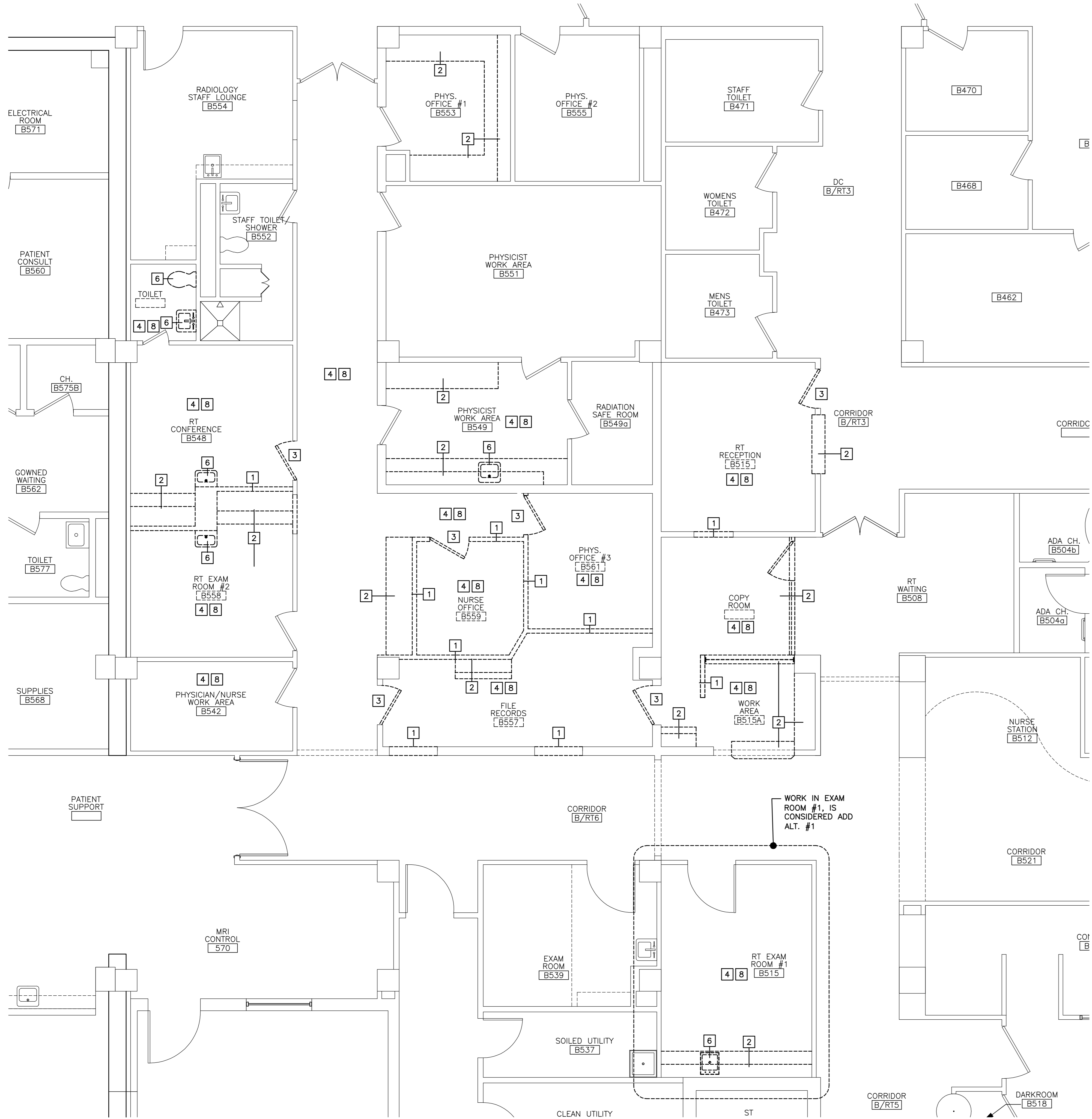
CURRENT ISSUE STATUS:  
**ISSUED FOR PERMITTING  
 11-2-07**

REV	DESCRIPTION	DATE

GRAPHIC SCALE:  
 0" 1"

SCALE: 1/4"=1'-0"

PROJECT MANAGER: CDP  
 JC/DRAWN BY: MDR  
 A/E OF RECORD: CDP  
 CAD FILE: A-001-07162  
 PROJECT NO: 07162  
 DATE:  
 SHEET TITLE:



**DEMOLITION KEY NOTES:**

- 1 REMOVE PARTITION COMPLETE.
- 2 REMOVE EXISTING CASEWORK COMPLETE.
- 3 REMOVE DOOR, FRAME AND HARDWARE COMPLETE.
- 4 REMOVE CEILING TILE AND GRID ASSEMBLY COMPLETE. COORDINATE EXTENTS OF REMOVAL WITH PARTITION LOCATIONS AND EXISTING FINISHES TO REMAIN.
- 5 REMOVE PORTION OF PARTITION FOR INSTALLATION OF DOOR. COORDINATE EXTENTS WITH FINISHES TO REMAIN. REFERENCE DOOR SCHEDULE.
- 6 REMOVE/RELOCATE EXISTING FIXTURE. REFERENCE MECHANICAL/ELECTRICAL.
- 7 EXISTING CEILING SYSTEM TO BE REMOVED & REPLACED TO ALLOW MECHANICAL WORK TO BE PERFORMED.
- 8 REMOVE EXISTING FLOORING COMPLETE, PREPARE FOR NEW.
- 9 REMOVE PORTION OF CEILING GRID FOR INSTALATION OF LIGHT.

**GENERAL DEMOLITION NOTES:**

- 1. COORDINATE EXTENT OF DEMOLITION WITH LOCATIONS OF PARTITIONS DESCRIBED ON PLANS AND WITH LOCATIONS OF FINISHES NOTED AS EXISTING TO REMAIN.
- 2. ANY WALL, PARTITION OR SURFACE DISTURBED BECAUSE OF NEW WORK OR DEMOLITION SHALL BE PATCHED AND FINISHED CONTINUOUSLY TO THE NEAREST CORNER UNLESS NOTED OTHERWISE, MATCH EXISTING ADJACENT CONSTRUCTION FINISHES, CONTINUITY AND FIRE RATINGS UNLESS NOTED OTHERWISE.
- 3. PROTECT ALL FINISHES, MATERIALS AND EQUIPMENT NOTED AS EXISTING TO REMAIN. CONTRACTOR SHALL BE RESPONSIBLE TO REPLACE ALL FINISHES, MATERIALS AND EQUIPMENT DAMAGED DURING CONSTRUCTION.
- 4. FOR EXTENTS OF CEILING GRID REMOVALS AND ADJUSTMENTS REFER TO SHEET AE???
- 5. DIMENSIONS INDICATED ± ARE EXISTING CONDITION DIMENSIONS TO BE VERIFIED IN FIELD.



ARCHITECTURE ENGINEERING PLANNING  
 SWRT  
 144 Fore Street/P.O. Box 618  
 Portland, Maine 04104  
 tel. (207) 772-3846  
 fax. (207) 772-1070



PROJECT TITLE:  
**MAINE MEDICAL CENTER  
 RT RENOVATIONS PHASE 2**  
 22 BRANHALL ST  
 PORTLAND, MAINE

CURRENT ISSUE STATUS:  
**ISSUED FOR PERMITTING  
 11-2-07**

REV	DESCRIPTION	DATE

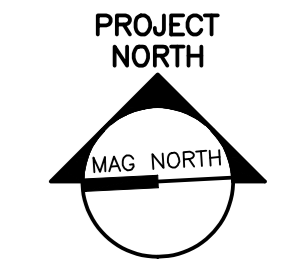
GRAPHIC SCALE:  
 0" 1"  
 SCALE: 1/4"=1'-0"  
 PROJECT MANAGER: CDP  
 JC/DRAWN BY: MDR  
 A/E OF RECORD: CDP  
 CAD FILE: AD101-07162  
 PROJECT NO: 07162  
 DATE:  
 SHEET TITLE:

A1 DEMO PLAN

1/4"=1'-0"

SHEET No.  
**AD101**  
 © copyright 2007 SMRT INC.

PROCESS PRINT



REV	DESCRIPTION	DATE

GRAPHIC SCALE:  
0" 1"

SCALE: 1/4"=1'-0"

PROJECT MANAGER: CDP  
JC/DRAWN BY: MDR  
A/E OF RECORD: CDP  
CAD FILE: AE101-07162  
PROJECT NO: 07162  
DATE:  
SHEET TITLE:

- NOTES:**
- FURNITURE DASHED IN BY OTHERS IS INDICATED FOR COORDINATION AND BLOCKING.
  - PARTITION TYPE 1 IS TYPICAL UNLESS NOTED OTHERWISE.

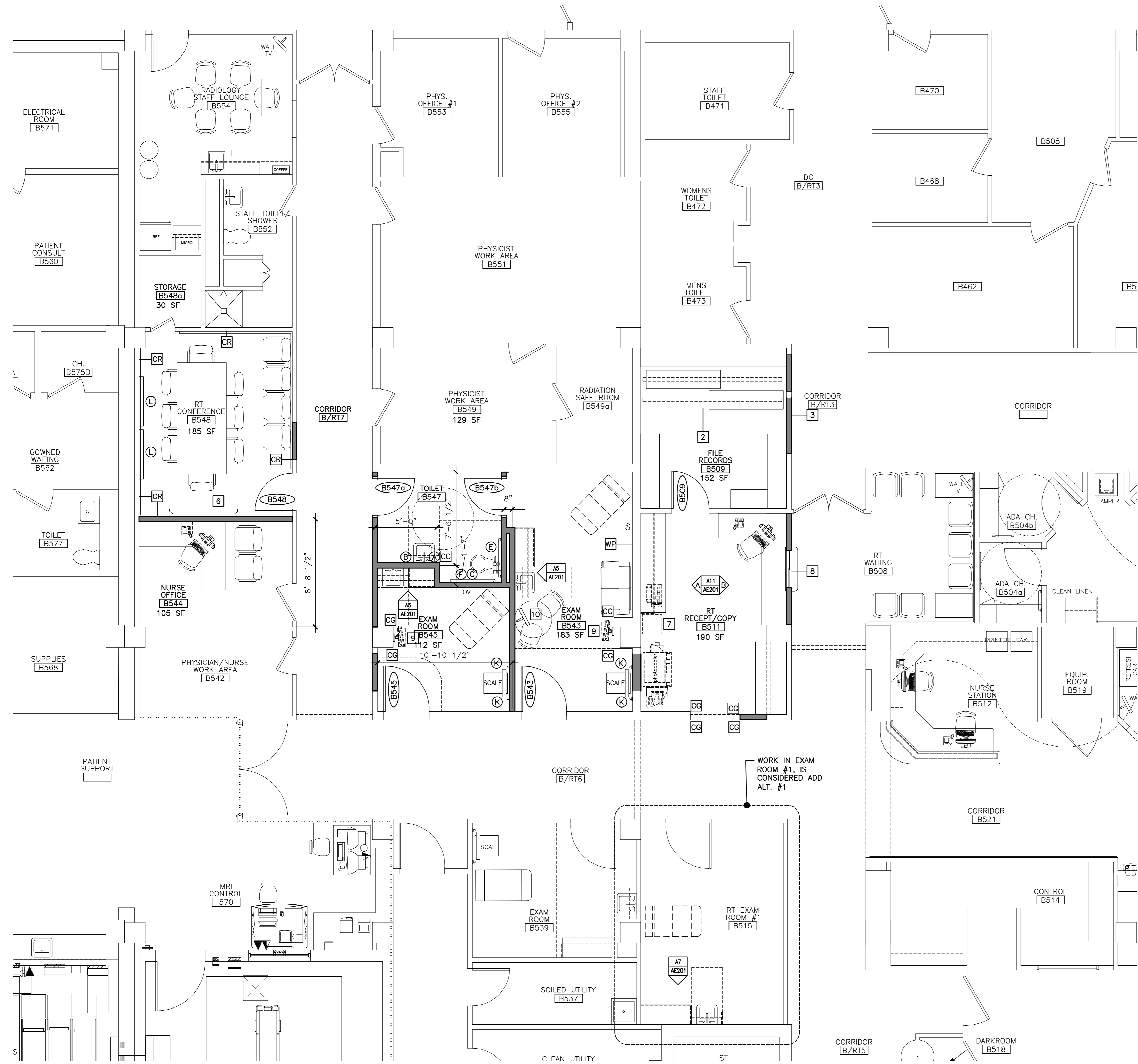
- WALL LEGEND**
- 1 PARTITION TYPE, SEE G1001
  - INDICATES NEW PARTITION/ WALL
  - CG CORNER GUARD, INSTALL 4" ABOVE FLOOR
  - CR CORNER GUARD, INSTALL 4" ABOVE FLOOR
  - WP WALL PROTECTION, FLOOR TO 4" AFF.

- KEYED NOTES:**
- WALL MOUNT TV(NIC), PROVIDE BLOCKING
  - ROLLING FILE STORAGE SYSTEM, NIC
  - PROVIDE SIGNAGE
  - SYSTEM FURNITURE, NIC
  - SCALE, NIC
  - PLAMSA TV, NIC
  - RECYCLING BOX, NIC
  - SLIDING TRANSACTION WINDOW, SEE K3,G3,D3/AE201 FOR DETAILS.
  - WALL MOUNTED COMPUTER
  - WALL MOUNTED TV/DVD

**ACCESSORY SCHEDULE**

TAG	DESCRIPTION	
(A)	SOAP DISPENSER	C/C
(B)	PAPER TOWEL DISPENSER	C/C
(C)	TOILET PAPER DISPENSER	C/C
(D)	MIRROR 18" x 30"	C/C
(E)	36" GRAB BAR	C/C
(F)	42" GRAB BAR	C/C
(G)	ROBE/COAT HOOK	C/C
(H)	WALL MIRROR, EXISTING RELOCATE	O/C
(J)	(2) COAT HOOKS, SEE DETAIL	C/C
(K)	EXISTING RELOCATED GRAB BAR	O/C
(L)	EXISTING RELOCATED LIGHT BOXES	O/C

C/C - CONTRACTOR FURNISHED/CONTRACTOR INSTALLED  
O/C - OWNER FURNISHED/CONTRACTOR INSTALLED  
O/O - OWNER FURNISHED/OWNER INSTALLED  
(CONTRACTOR SHALL PROVIDE BLOCKING IN WALL)



**A1 FLOOR PLAN**

1/4"=1'-0"

\*



**REFLECTED CEILING NOTES**

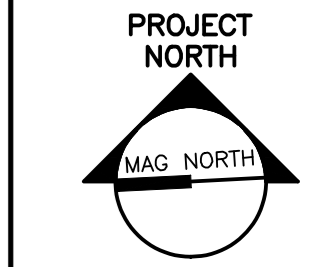
1. FIRE SPRINKLERS SHALL BE LOCATED IN ALIGNMENT WITH OTHER CEILING ITEMS, TYPICALLY.
2. FIRE SPRINKLERS SHALL BE CENTERED IN CEILING TILE.
3. FIRE SPRINKLERS SHALL BE PLACED TO COORDINATE WITH LIGHT FIXTURE POSITIONS INDICATED.
4. ALIGN CEILING ITEMS AS SHOWN, WITH COMMON CENTERLINES, TYPICALLY. CENTER ITEMS IN CEILINGS, OR IN AREAS UNLESS INDICATED OTHERWISE.
5. REFER TO ROOM FINISH SCHEDULE FOR CEILING HEIGHTS AND CEILING FINISHES TO BE PROVIDED.
6. EXCEPT WHERE INDICATED, CENTER CEILING GRIDS IN ROOMS. USE HALF TILE OR GREATER, CENTER PERIMETERS AS POSSIBLE.
7. PROVIDE ACCESS PANELS AS REQUIRED IN GWB CEILINGS FOR ACCESS TO MECHANICAL VALVES/ CONTROLS. REFERENCE MECHANICAL.

**KEYED NOTES:**

- 1 CEILING MOUNTED CURTAIN TRACK
- 2

**SYMBOL LEGEND**

- 2x2 SUSPENDED CEILING PANEL AND GRID ASSEMBLY.
- 2x4 SUSPENDED CEILING PANEL AND GRID ASSEMBLY.
- GWB CEILING.
- 2x4 LAY-IN LIGHT FIXTURE.
- 1x4 PENDANT LIGHT FIXTURE.
- DOWN LIGHT.
- CEILING MOUNTED EXIT LIGHT.
- RETURN AIR GRILLE.
- SUPPLY AIR GRILLE.
- EXHAUST AIR GRILLE.



PROJECT TITLE:  
**MAINE MEDICAL CENTER  
 RT RENOVATIONS PHASE 2**  
 22 BRAMHALL ST  
 PORTLAND, MAINE

CURRENT ISSUE STATUS:  
**ISSUED FOR PERMITTING  
 11-2-07**

REV	DESCRIPTION	DATE

GRAPHIC SCALE:

SCALE: 1/4"=1'-0"

PROJECT MANAGER: CDP  
 JC/DRAWN BY: MDR  
 A/E OF RECORD: CDP  
 CAD FILE: AE102-07162  
 PROJECT NO: 07162  
 DATE:  
 SHEET TITLE:  
**REFLECTED  
 CEILING  
 PLAN**



ROOM FINISH SCHEDULE											
ROOM NUMBER	ROOM NAME	FLOOR	BASE	WALLS				CEILING		ROOM NUMBER	REMARKS
				NORTH	SOUTH	EAST	WEST	MATERIAL	HEIGHT		
B/RT3	CORRIDOR	EXIST	EXIST	PTD AS REQUIRED	PTD AS REQUIRED	PTD AS REQUIRED	PTD AS REQUIRED	EXIST	.	B/RT3	
B/RT6	CORRIDOR	EXIST	EXIST	PTD AS REQUIRED	PTD AS REQUIRED	PTD AS REQUIRED	PTD AS REQUIRED	EXIST	.	B/RT6	
B/RT7	CORRIDOR	VCT	RB	PTD-1	PTD-1	PTD-1	PTD-1	ACT		B/RT7	SEE AF1010 FOR FLOOR PATTERN
B509	FILE RECORDS	CPT-1	RB	PTD-1	PTD-1	PTD-1	PTD-1	ACT		B509	
B511	RT RECEPTION/COPY	CPT-1	RB	PTD-1	PTD-1	PTD-1	PTD-2	ACT		B511	
B515	RT EXAM ROOM #1	VCT	RB	PTD-1	PTD-1	PTD-1	PTD-1	ACT		B515	SEE AF1010 FOR FLOOR PATTERN
B542	PHYSICIAN/NURSE WORK AREA	CPT-1	RB	PTD-1	PTD-1	PTD-1	PTD-1	ACT		B542	
B543	EXAM ROOM	VCT	RB	PTD-2	PTD-1	PTD-1	PTD-1	ACT		B543	SEE AF1010 FOR FLOOR PATTERN
B545	EXAM ROOM	VCT	RB	PTD-1	PTD-1	PTD-1	PTD-1	ACT		B545	SEE AF1010 FOR FLOOR PATTERN
B547	TOILET	PFT-1	CT-1	CT/PTD-1	PTD-1	PTD-1	PTD-1	ACT		B547	① CT TILE WAINSCOTING
B544	NURSE OFFICE	CPT-1	RB	PTD-1	PTD-1	PTD-1	PTD-1	ACT		B544	
B548	RT CONFERENCE	CPT-1	RB	PTD-1 & PTD-2	PTD-1 & PTD-2	PTD-1 & PTD-2	PTD-1 & PTD-2	ACT		B548	PTD-1 ABOVE CHAIR RAIL, PTD-2 BELOW
B548a	STORAGE	CPT-1	RB	PTD-1	PTD-1	PTD-1	PTD-1	ACT		B548a	
B549	PHYSICIST WORK AREA	VCT	RB	PTD-1	PTD-1	PTD-1	PTD-1	ACT		B549	SEE AF1010 FOR FLOOR PATTERN
B553	PHYSICIAN OFFICE #1	EXIST	EXIST	PTD-1	PTD-1	PTD-1	PTD-1	ACT		B553	
B555	PHYSICIAN OFFICE #2	EXIST	EXIST	PTD-1	PTD-1	PTD-1	PTD-1	ACT		B555	

DOOR SCHEDULE												
DOOR NUMBER	DOOR			GLAZING	FRAME				HWS	FIRE RATING (MIN.)	DOOR NUMBER	REMARKS
	SIZE	MATERIAL	ELEVATION		MATERIAL	ELEVATION	HEAD	JAMB				
B509	3'-0"x7'-0"	WD	F		HM	1					B509	
B543	3'-8"x7'-0"	WD	F		HM	1					B543	
B545	3'-8"x7'-0"	WD	F		HM	1					B545	
B547a	3'-0"x7'-0"	WD	F		HM	1					B547a	
B547b	3'-0"x7'-0"	WD	F		HM	1					B547b	
B548	3'-0"x7'-0"	WD	F		HM	1					B548	

#### DOOR SCHEDULE NOTES

- EXISTING RELOCATED WITH SIMILAR HARDWARE
- REUSE IF IN GOOD CONDITION

#### FINISH LEGEND

##### CARPET

CPT-1 TANDUS, CROSSLEY #0313 FIRST IMPRESSIONS, COLOR: TAN

##### CERAMIC TILE

CT-1 AMERICAN OLEAN, SNOW MIST #95 6"x6" AND ALL TRIM PIECES.

##### PAINT

PTD-1 ICI ANTIQUE WHITE #739  
PTD-2 ICI FLAGSTONE #1137

##### PORCELAIN FLOOR TILE

PFT-1 AMERICAN OLEAN, INDIAN SLATE ARD BIANCA, 12"x12" PRODUCT # 6IINSBIA12

##### PLASTIC LAMINATE

PLAM-1 PIONITE, KALE FIBER AV861, SUEDE (TO BE USED AT COUNTERTOP/BACKSPASH AREAS)  
PLAM-2 PIONITE, HARDROCK MAPLE, WM791 SUEDE (TO BE USED AT VERTICAL PORTIONS OF THE CASEWORK)

##### PROTECTIVE WALL COVERING

PWC-1 C/S ACROVYN #933 MISSION WHITE

##### RUBBER BASE

RB JOHNSONITE #40 BLACK

##### VCT

VCT-1 ARMSTRONG, POLAR WHITE # 51941  
VCT-2 ARMSTRONG, BUTTERCREAM YELLOW #51800  
VCT-3 ARMSTRONG, WILLOW GREEN #51938

#### FINISH KEY NOTES:

- CT WAINSCOT, PERIMETER OF ROOM. TILE TO TERMINATE 2" ABOVE TOP OF SINK. PTD-2 AT NORTH WALL, ABOVE TILE.

#### FINISH ABBREVIATIONS:

ACT	ACOUSTICAL CEILING TILE
CT	CERAMIC WALL TILE
PLAM	PLASTIC LAMINATE
PTD	PAINTED
PWC	PROTECTIVE WALL COVERING
RB	RUBBER BASE
VCT	VINYL COMPOSITION TILE
WD	WOOD

#### FINISH NOTES:

- ALL DOOR FRAMES TO BE PTD-1.
- FOR CASEWORK USE PLAM-1 ON ALL HORIZONTAL SURFACES (& BACKSPASH) AND PLAM-2 ON ALL VERTICAL SURFACES, TYP. U.N.O.

**SM  
RT**

ARCHITECTURE ENGINEERING PLANNING

SWRT  
144 Fore Street/P.O. Box 618  
Portland, Maine 04104  
tel. (207) 772-3846  
fax. (207) 772-1070



PROJECT TITLE:  
MAINE MEDICAL CENTER  
RT RENOVATIONS PHASE 2  
22 BRAMHALL ST  
PORTLAND, MAINE

CURRENT ISSUE STATUS:  
**ISSUED FOR PERMITTING  
11-2-07**

PROJECT TITLE:

REV	DESCRIPTION	DATE

GRAPHIC SCALE:



SCALE: AS NOTED

PROJECT MANAGER: CDP

JC/DRAWN BY: MDR

A/E OF RECORD: CDP

CAD FILE: AE601-07162

PROJECT NO: 07162

DATE:

SHEET TITLE:

SCHEDULES

SHEET No.

AE601

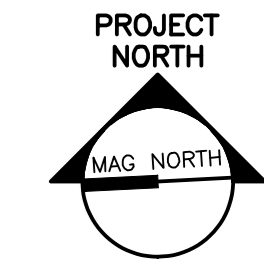
© copyright 2007 SMRT INC.

A1

\*

\*

PROCESS PRINT



REV	DESCRIPTION	DATE

GRAPHIC SCALE:  
0" 1"

SCALE: 1/4"=1'-0"

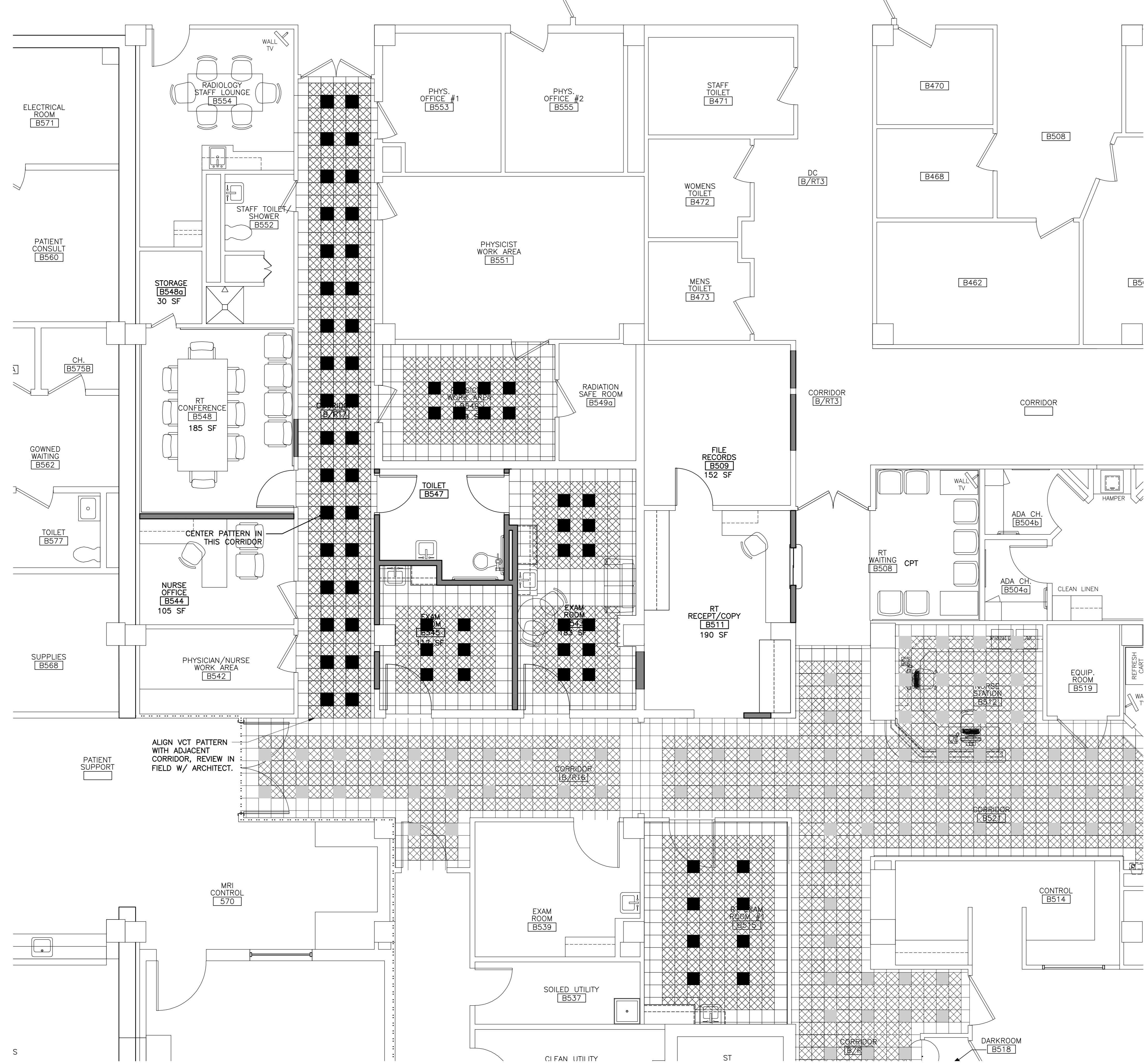
PROJECT MANAGER: CDP  
JC/DRAWN BY: MDR  
A/E OF RECORD: CDP  
CAD FILE: AF101-07162  
PROJECT NO: 07162  
DATE:  
SHEET TITLE:

**NOTES:**

1. SEE AE601 FOR MATERIALS LEGEND.

**FLOOR LEGEND:**

- VCT-1 ■ ARMSTRONG #51941 POLAR WHITE
- VCT-2 □ ARMSTRONG #51800 BUTTERCREAM YELLOW
- VCT-3 ⊠ ARMSTRONG #51938 WILLOW GREEN



**A1 FLOOR PLAN**

1/4"=1'-0"

\*

