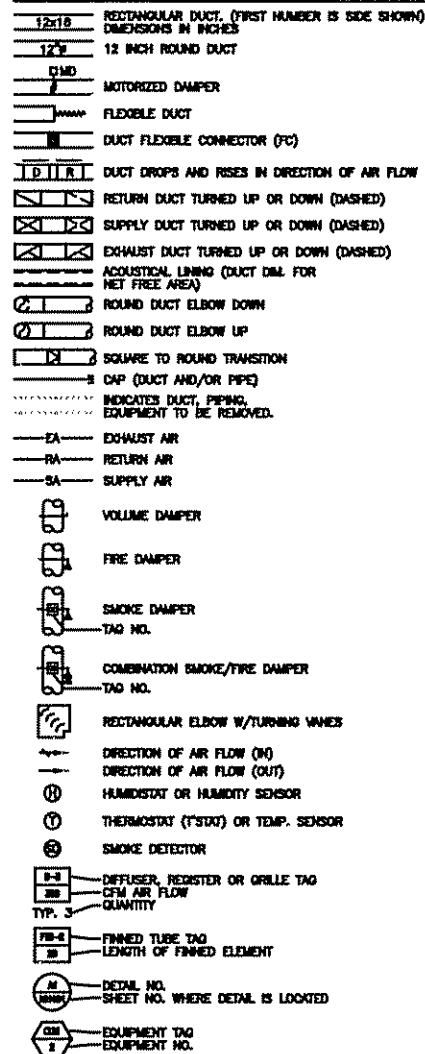
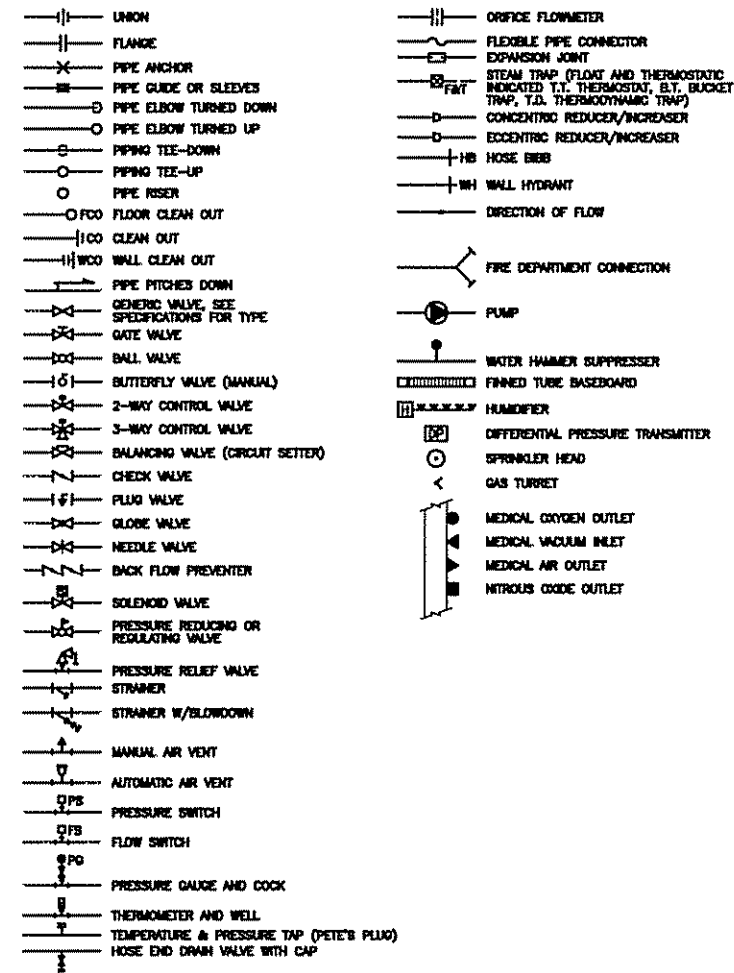


**AIR DISTRIBUTION SYMBOLS**



**PIPING SYMBOLS**



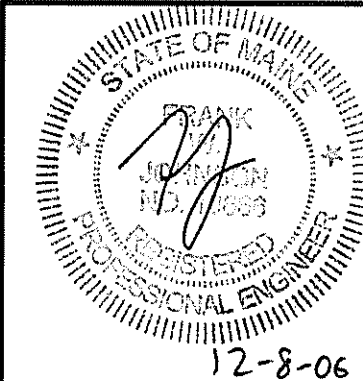
**ABBREVIATIONS**

AW	AUTOMATIC AIR VENT	DW	DOWN IN WALL	OA	OUTSIDE AIR
ACC	AIR COOLED CONDENSER	DN	DOWN	OED	OPPOSED BLADE DAMPER
ACU	AIR CONDITIONING UNIT	DS	DOWNSPOUT	OD	OPEN ENDED DUCT
AD	ACCESS DOOR	DT	DROP AND TRANSITION	P-#	PLUMBING FIXTURE TAG
AE	ACID EXHAUST	DWG	DRAWING	PAE	PROCESS ACID EXHAUST
AFF	ABOVE FINISHED FLOOR	DWH	DOMESTIC WATER HEATER	PHE	PROCESS HEAT EXHAUST
AFMS	AIR FLOW MEASURING STATION	EA	EXHAUST AIR	PSE	PROCESS SOLVENT EXHAUST
AHU	AIR HANDLING UNIT	EF	EXHAUST FAN	PP	POLY-PROPYLENE
AP	ACCESS PANEL	ENC	ENCLOSURE	PPE	PRE PURCHASED EQUIPMENT
ATC	AUTOMATIC TEMPERATURE CONTROL	ER	EXHAUST REGISTER	PRS	PRESSURE REDUCING STATION
AV	AIR VENT	(E)	EXISTING	PRV	PRESSURE REDUCING VALVE
BA	BREATHING COMPRESSED AIR	EXIST.	EXISTING	PVD	PNEUMATIC VOLUME DAMPER
BB	BASEBOARD	FBO	FURNISHED BY OWNER	(R)	REMOVE
BDD	BACKDRAFT DAMPER	FBP	FACE AND BYPASS	RA	RETURN AIR
BG	BLAST GATE	FC	FLEXIBLE CONNECTION	RD	ROOF DRAIN
BFP	BACKFLOW PREVENTER	FCD	FLOOR CLEANOUT	(REL.)	RELOCATED
BLDG	BUILDING	FD-#	FLOOR DRAIN TAG	RF	RETURN FAN
BOD	BOTTOM OF DUCT	FD	FIRE DAMPER	RG	RETURN GRILLE
BOP	BOTTOM OF PIPE	FG	FIBERGLASS	RHC	REHEAT COIL
BTU	BRITISH THERMAL UNIT	F & T	FLOAT AND THERMOSTATIC	RM	ROOM
CB	COUNTER BALANCED DAMPER	FO	FLAT ORNL	RPZ	REDUCED PRESSURE ZONE BFP
CD	CEILING DIFFUSER	FRHB	FREEZE RESISTANT HOSE BIBB	RR	RETURN REGISTER
CF	CAPPED FOR FUTURE	FTR	FINNED TUBE RADIATION	RV	RELIEF VALVE
CFM	CUBIC FEET PER MINUTE	FS	FLOW SWITCH	SA	SUPPLY AIR
CLD	CEILING	GC	GENERAL CONTRACTOR	SCV	SELF CONTAINED VALVE
CO	CLEANOUT	GPM	GALLONS PER MINUTE	SD	SMOKE DETECTOR
COHT	CONTINUATION	H	HUMIDIFIER	SF	SUPPLY FAN
COORD	COORDINATE	HB	HOSE BIB	SG	SUPPLY GRILLE
CP	CONDENSATE PUMP & RECEIVER	HRTU	HEAT RECOVERY UNIT	SR	SUPPLY REGISTER
CT	COOLING TOWER	HTR	HEATER	SS	STAINLESS STEEL
CIE	CONNECT TO EXISTING	H & V	HEATING AND VENTILATION	TE	TEMPERATURIZED ELEMENT (SENSOR)
CJ	COPPER	HVAC	HEATING, VENTILATING AND AIR CONDITIONING	TO	TRANSFER GRILLE
CUH	CABINET UNIT HEATER	HW	HOT WATER	TOO	TOP OF DUCT
CV	CONTROL VALVE	HX	HEAT EXCHANGER	TOP	TOP OF PIPE
CW	COLD WATER	IN WG	INCHES WATER GAUGE	TIS	TIGHT TO STEEL
CW-P	CITY WATER-PROCESS	LD	LINED DUCT	TV	TURNING VANES(S)
DC	DOUBLE CONTAINED	MAU	MAKE UP AIR UNIT	TYP	TYPICAL
DOC	DIRECT DIGITAL CONTROL	MAX	MAXIMUM	UH	UNIT HEATER
DA	DIAMETER	MEH	1000 BTU/HR	UC	UP IN CHASE
DIC	DOWN IN CHASE	ME	MECHANICAL ENGINEER	UW	UP IN WALL
		MFR	MANUFACTURER	UV	UNIT VENTILATOR
		MIN	MINIMUM	VW	VARIABLE AIR VOLUME BOX
		MO	MOTOR OPERATED DAMPER	VB	VACUUM BREAKER
		MPV	MULTI-PURPOSE VALVE	VTR	VENT THRU ROOF
		MTD	MOUNTED	VD	MANUAL VOLUME DAMPER
		MUA	MAKE UP AIR	VCF	VALVED AND CAPPED FOR FUTURE
		NPW	NON-POTABLE WATER	VOC	VOLATILE ORGANIC COMPOUNDS
		NTS	NOT TO SCALE	VFD	VARIABLE FREQUENCY DRIVE
		P-#	PLUMBING FIXTURE TAG	W/	WITH
		PEA	ALKALI EXHAUST	WOO	WALL CLEANOUT
		PEH	HEAT EXHAUST	WH	WALL HYDRANT

**PIPING SYSTEMS**

10:1 HF	10:1 HF	GCR	GRAVITY STEAM CONDENSATE RETURN	MV	MEDICAL VACUUM	TW	TEMPERED WATER
AV	ACID VENT	GLY	GLYCOL	H2NP	NON-PROCESS NITROGEN	TWS	TEMPERED CHILLED WATER SUPPLY
AD	ACID DRAIN	GV	GAS VENT	N2	PROCESS NITROGEN	TWR	TEMPERED CHILLED WATER RETURN
AD	ACID DRAIN (BELOW SLAB)	H	HYDROGEN	NO	NATURAL GAS	VAC	PLANT VACUUM
BA	BREATHING AIR	H2O2	HYDROGEN PEROXIDE	HNO	HIGH PRESSURE NATURAL GAS	ZB	ZONE VALVE BOX
CD	CONDENSATE DRAIN	HCR	HOT/ CHILLED WATER RETURN	HNO2	NITROUS OXIDE	TEMP	DOMESTIC HOT WATER (TEMP °F)
CDA	COMPRESSED DRY AIR	HCS	HOT/ CHILLED WATER SUPPLY	NEG. SOLV.	NEGATIVE SOLVENT DRAIN	TEMP	RECIRC. DOMESTIC HOT WATER (TEMP °F)
CHWS	CHILLED WATER SUPPLY	HCV	HOUSE CLEAN VACUUM	NPW	NON POTABLE COLD WATER	CW	DOMESTIC COLD WATER
CHWR	CHILLED WATER RETURN	HO	HOT GAS	O2	OXYGEN	HW	DOMESTIC HOT WATER (120° F)
CWS	CONDENSER WATER SUPPLY	HPS	HIGH PRESSURE STEAM	OFA	OIL FREE COMPRESSED AIR	RCW	RECIRCULATED DOMESTIC HOT WATER (120° F)
CWR	CONDENSER WATER RETURN	HPR	HIGH PRESSURE CONDENSATE RETURN	POWR	PROCESS COOLING WATER RETURN	S, W or KW	S SANITARY, W WASTE & KW KITCHEN WASTE
DB	DISTRIBUTION VALVE BOX	HWS	HOT WATER SUPPLY	PC	PUMPED STEAM CONDENSATE	S, W or KW	S SANITARY, W WASTE & KW KITCHEN WASTE (EXIST.)
DIS	DEIONIZED WATER SUPPLY	HWR	HOT WATER RETURN	PD	PUMPED DISCHARGE	S, W or KW	S SANITARY, W WASTE & KW KITCHEN WASTE (BELOW SLAB)
DIR	DEIONIZED WATER RETURN	IAO	ISOPROPYL ALCOHOL DRAIN	POS. SOLV.	POSITIVE SOLVENT DRAIN	S, W or KW	S SANITARY, W WASTE & KW KITCHEN WASTE (BELOW SLAB-EXIST.)
EXCD	EXD DRAIN	LP	LIQUID PROPANE GAS	PW	POTABLE WATER	SD	SD STORM DRAIN
ESEM	EYEWASH	HLP	HIGH PRESSURE LIQUID PROPANE GAS	R	RELIEF LINE	SD	SD STORM DRAIN (EXIST.)
FCS	FREE COOLING SUPPLY	LPS	LOW PRESSURE STEAM	RL	REFRIGERANT LIQUID	SD	SD STORM DRAIN (BELOW SLAB)
FCR	FREE COOLING RETURN	LPR	LOW PRESSURE RETURN	RS	REFRIGERANT SUCTON	SD	SD STORM DRAIN (BELOW SLAB-EXIST.)
FOS	FUEL OIL SUPPLY	MA	MEDICAL AIR	GLD	MIXED SOLVENT DRAIN	V	V SANITARY VENT
FOR	FUEL OIL RETURN	MPS	MEDIUM PRESSURE STEAM	SV	SOLVENT	V	V SANITARY VENT (EXIST.)
FOV	FUEL OIL VENT	MPR	MEDIUM PRESSURE RETURN	SP	SPRINKLER	V	V SANITARY VENT (BELOW SLAB)
						V	V SANITARY VENT (BELOW SLAB-EXIST.)

**GENERAL NOTE**  
 1. ALL GENERAL NOTES, SYMBOL LISTS, AND DETAILS ARE TO BE CONSIDERED AS APPLICABLE TO ALL HVAC AND PLUMBING DRAWINGS FOR THIS PROJECT. SYMBOLS AND ABBREVIATIONS SHOWN ON THIS SHEET ARE FOR REFERENCE ONLY AND DO NOT INDICATE THEIR INCORPORATION INTO THE DESIGN.



**PROJECT:** MAINE MEDICAL CENTER RADIATION THERAPY RENOVATIONS PORTLAND, MAINE

**ISSUED FOR CONSTRUCTION** 12-8-06

**DATE:** 12-8-06

**REVISIONS:** 0 ISSUED FOR CONSTRUCTION

**ARCHITECTURE ENGINEERING PLANNING**

**LEGEND AND ABBREVIATIONS**

**SMRT**

144 Fore Street/P.O. Box 618 PORTLAND, MAINE 04104  
 tel. (207) 772-3846 / fax. (207) 772-1070

**PROJECT MANAGER:** CDP

**SHEET No. M-001**

**SCALE:** NOT TO SCALE

**DATE:** 12-8-06

**PROJECT No. M-001**

**SMRT CAD FILE: M-001-06043**

**PROJECT No. 06043**

**DATE: 12-8-06**

**ISSUED FOR CONSTRUCTION** 12-8-06

# SPECIFICATIONS & NOTES:

CONTRACTOR SHALL VISIT THE SITE TO DETERMINE PRE-EXISTING CONDITIONS AND ALL WORK NECESSARY, PRIOR TO BIDDING. VERIFY ALL MEASUREMENTS AND EXISTING CONDITIONS IN THE FIELD. GENERAL SCHEMATIC LAYOUT IS INDICATED; ALL OFFSETS, OBSTRUCTIONS, AND EXISTING CONFIGURATIONS AND CONSTRAINTS MUST BE FIELD VERIFIED. COORDINATE INSTALLATIONS WITH OTHER TRADES.

OBTAIN NECESSARY PERMITS AND PAY ASSOCIATED FEES.

COORDINATE ANY SERVICE DISRUPTIONS WITH THE OWNER.

INSTALL ALL COMPONENTS IN ACCORDANCE WITH MANUFACTURER RECOMMENDATION AND LOCAL CODES AND STANDARDS.

THE INTENTION OF THESE CONTRACT DOCUMENTS IS TO CALL FOR FINISHED WORK, FULLY TESTED AND READY FOR OPERATION. ANY COMPONENTS OR LABOR NOT MENTIONED IN THE CONTRACT DOCUMENTS BUT REQUIRED FOR FUNCTIONING SYSTEMS SHALL BE PROVIDED. SHOULD THERE APPEAR TO BE ANY DISCREPANCIES OR QUESTIONS OF INTENT, THE CONTRACTOR SHALL REFER THE MATTER TO THE ARCHITECT FOR DECISION BEFORE START OF ANY RELATED WORK.

PERFORM WORK IN ACCORDANCE WITH LOCAL CODES.

SEAL ALL DUCT AND PIPE PENETRATIONS WITH FIRE SEALANT.

OBSERVE THE OWNER'S CLEANLINESS PROTOCOLS.

### PIPING AND INSULATION

HOT WATER PIPING: COPPER TUBE, ASTM B88, TYPE L WITH WROUGHT COPPER FITTINGS. INSULATE HOT WATER PIPING WITH 1-INCH THICK FIBERGLASS INSULATION. INSULATION SHALL HAVE FACTORY APPLIED ALL-PURPOSE JACKET.

PROPERLY SUPPORT PIPING WITH GALVANIZED STEEL ADJUSTABLE CLEVIS HANGERS AS PER MSS SP-69.

### METAL DUCTWORK AND INSULATION

GALVANIZED STEEL DUCTWORK: ASTM A653 GALVANIZED STEEL SHEET, LOCK-FORMING QUALITY, AND G90 ZINC COATING. ALL DUCTWORK SHALL BE FURNISHED AND INSTALLED IN ACCORDANCE WITH SMACNA STANDARDS. CONSTRUCT DUCT SYSTEMS SO THAT LEAKAGE DOES NOT EXCEED ONE PERCENT OF THE TOTAL AIR QUANTITIES. SEAL ALL DUCT JOINTS WITH GASKETED CONNECTIONS, DUCTMATE, OR EQUAL.

DUCTWORK PRESSURE/SEAL CLASS.

SUPPLY DUCTWORK UPSTREAM OF DUCT TERMINAL UNITS:

2 INCH.

SUPPLY DUCTWORK DOWNSTREAM OF DUCT TERMINAL UNITS:

1 INCH.

# SPECIFICATIONS & NOTES: (CONT)

INSULATE SUPPLY, DUCTWORK WITH 1-1/2" FIBERGLASS BLANKET WITH ALL-SERVICE FSK JACKET.

PROVIDE VOLUME DAMPERS AT ALL BRANCH DUCTS.

PROPERLY SUPPORT DUCTWORK WITH GALVANIZED STEEL DUCT HANGERS AND SUPPORTS.

### INSULATED FLEXIBLE DUCTS

ALUMINUM LAMINATE AND POLYESTER FILM WITH LATEX ADHESIVE SUPPORTED BY HELICALLY WOUND SPRING STEEL WIRE, FIBERGLASS INSULATION, POLYETHYLENE VAPOR BARRIER FILM. R-VALUE = 4.2, UL 181, CLASS 1. MAXIMUM LENGTH: 5 FEET.

### DUCT TERMINAL UNITS

DESIGN IS BASED ON TITUS, MODEL DESV. UNIT INSULATION SHALL BE SHALL BE CLOSED CELL TYPE.

PROVIDE 24 VOLT CONTROL TRANSFORMER.

### SEQUENCE OF OPERATION

VAV-1: ON A CALL FOR COOLING, BOX SHALL MODULATE BETWEEN SCHEDULED MIN. AND MAX AIRFLOWS TO MAINTAIN SPACE TEMPERATURE SET POINT OF 75 DEG F. ON A CALL FOR HEATING BOX SHALL GO TO MINIMUM POSITION AND HOT WATER VALVE SHALL MODULATE TO MAINTAIN SPACE TEMPERATURE SET POINT OF 70 DEG F.

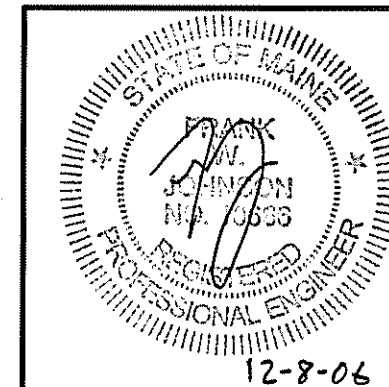
### TESTING, ADJUSTING, AND BALANCING (T-A-B)

TEST, ADJUST, AND BALANCE EQUIPMENT AND DISTRIBUTION SYSTEMS IN ACCORDANCE WITH NEBB OR AABC PROCEDURAL STANDARDS. TESTS SHALL BE PERFORMED BY AN INDEPENDENT T-A-B AGENCY.

T-A-B ALL NEW AND INDICATED AIR SUPPLY DIFFUSERS, RETURN GRILLES, EXHAUST GRILLES, AND HOT WATER COILS.

### FIRE PROTECTION

REWORK EXISTING FIRE PROTECTION PIPING TO ACCOMMODATE NEW ROOM LAYOUT. COMPLY WITH NFPA 13 AND LOCAL AUTHORITY HAVING JURISDICTION.



CURRENT ISSUED STATUS:

**ISSUED FOR CONSTRUCTION**  
12-8-06

SCALE: NOT TO SCALE JC/DRAWN BY: BAL

PROJECT MANAGER: CDP A/E OF RECORD: FWJ

SHEET No. M-002 SMRT CAD FILE: M-002-06043

PROJECT No: 06043

DATE: 12-8-06

PROJECT:

MAINE MEDICAL CENTER  
RADIATION THERAPY RENOVATIONS  
PORTLAND, MAINE

SHEET TITLE:

SPECIFICATIONS

REV 0 ISSUED FOR CONSTRUCTION 12-8-06

DESCRIPTION DATE

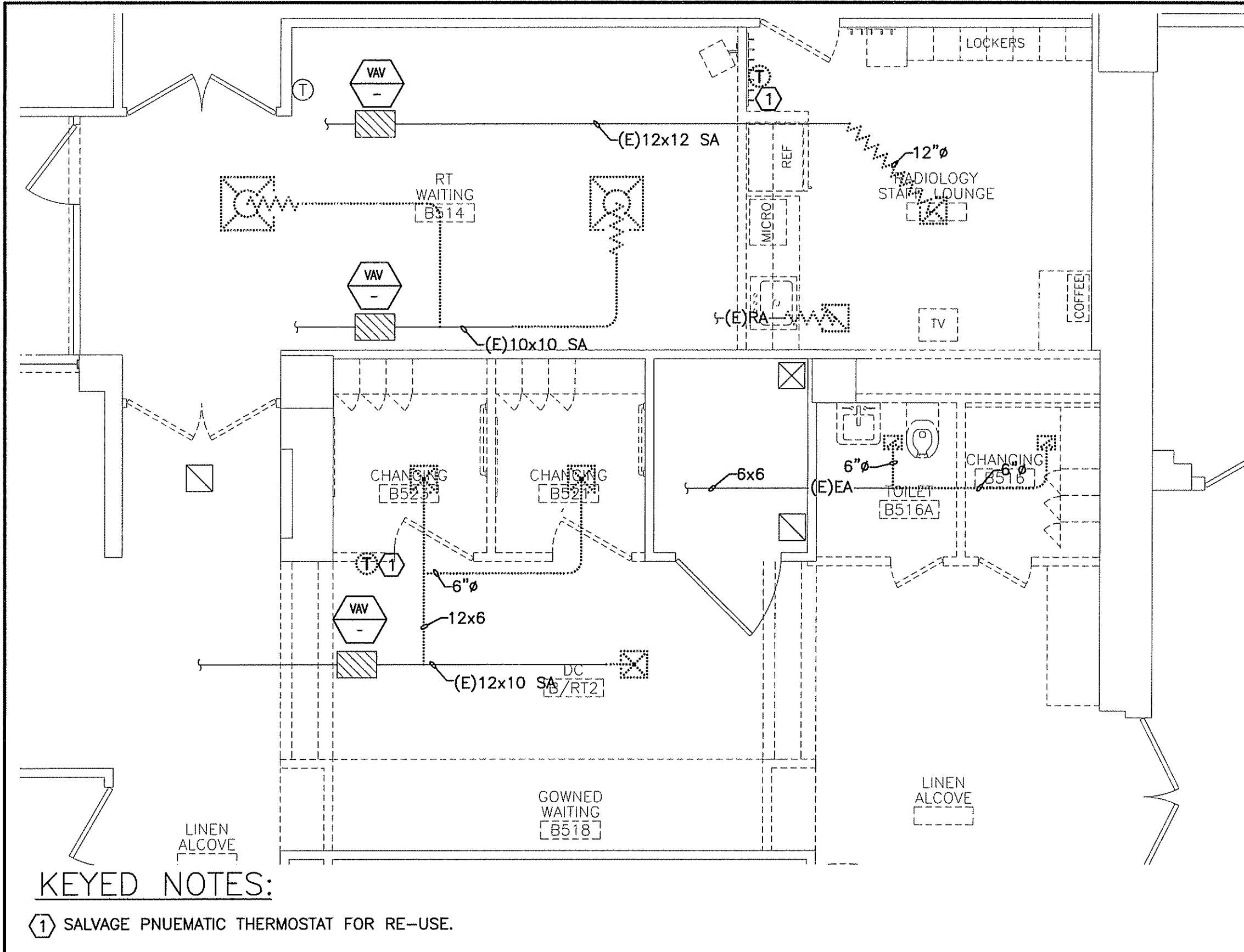
ARCHITECTURE ENGINEERING PLANNING

SMRT

144 Fore Street/P.O. Box 618 PORTLAND, MAINE 04104

tel. (207) 772-3846 / fax. (207) 772-1070

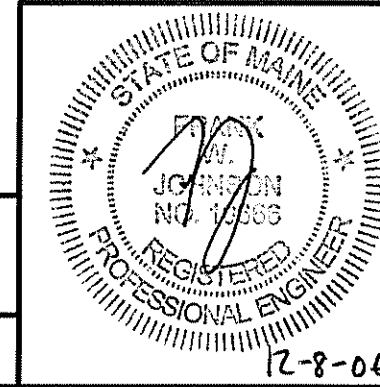




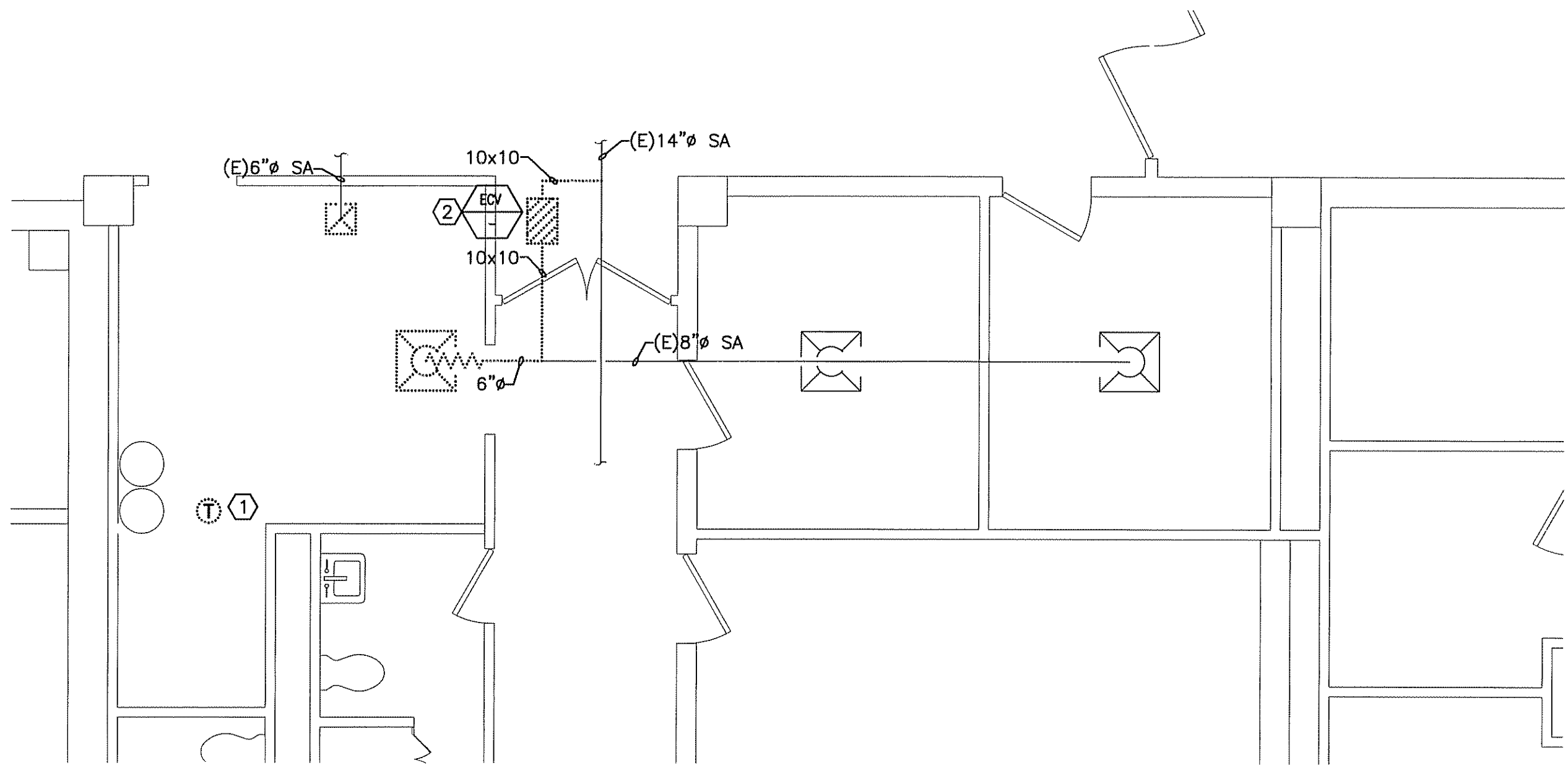
**KEYED NOTES:**

① SALVAGE PNEUMATIC THERMOSTAT FOR RE-USE.

A1	HVAC DEMOLITION PLAN
1/4"=1'-0"	*



<b>PROJECT:</b>	<b>MAINE MEDICAL CENTER RADIATION THERAPY RENOVATIONS PORTLAND, MAINE</b>						
<b>SHEET TITLE:</b>	<b>HVAC DEMOLITION PLAN</b>						
<b>PROJECT NUMBER:</b>	<b>1403 NORTH</b>						
<b>JC/DRAWN BY:</b>	BAL						
<b>A/E OF RECORD:</b>	FWJ						
<b>SMRT CAD FILE:</b>	MD101-06043						
<b>PROJECT No.:</b>	06043						
<b>DATE:</b>	12-8-06						
<b>CURRENT ISSUED STATUS:</b>	<b>ISSUED FOR CONSTRUCTION 12-8-06</b>						
<b>SCALE:</b>	1/4"=1'-0"						
<b>PROJECT MANAGER:</b>	CDP						
<b>SHEET No.</b>	<b>MD101</b>						
<small>© copyright 2006 SMRT INC.</small>	<small>12-8-06</small>						
	<table border="1" style="width: 100%; border-collapse: collapse;"> <tr> <th style="width: 5%;">REV</th> <th style="width: 15%;">DESCRIPTION</th> <th style="width: 15%;">DATE</th> </tr> <tr> <td style="text-align: center;">0</td> <td style="text-align: center;">ISSUED FOR CONSTRUCTION</td> <td style="text-align: center;">12-8-06</td> </tr> </table>	REV	DESCRIPTION	DATE	0	ISSUED FOR CONSTRUCTION	12-8-06
REV	DESCRIPTION	DATE					
0	ISSUED FOR CONSTRUCTION	12-8-06					
<p style="text-align: center; font-size: small;">144 Fore Street/P.O.Box 618 PORTLAND, MAINE 04104 tel. (207) 772-3846 / fax. (207) 772-1070</p>							



**KEYED NOTES:**

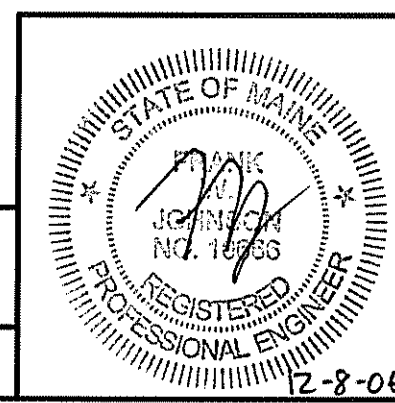
- ① REMOVE EXISTING PNEUMATIC THERMOSTAT.
- ② DISCONNECT 3/4-INCH HWS&R PIPING.

A5

PARTIAL FLOOR PLAN

1/4"=1'-0"

\*



CURRENT ISSUED STATUS:  
**ISSUED FOR CONSTRUCTION**  
**12-8-06**

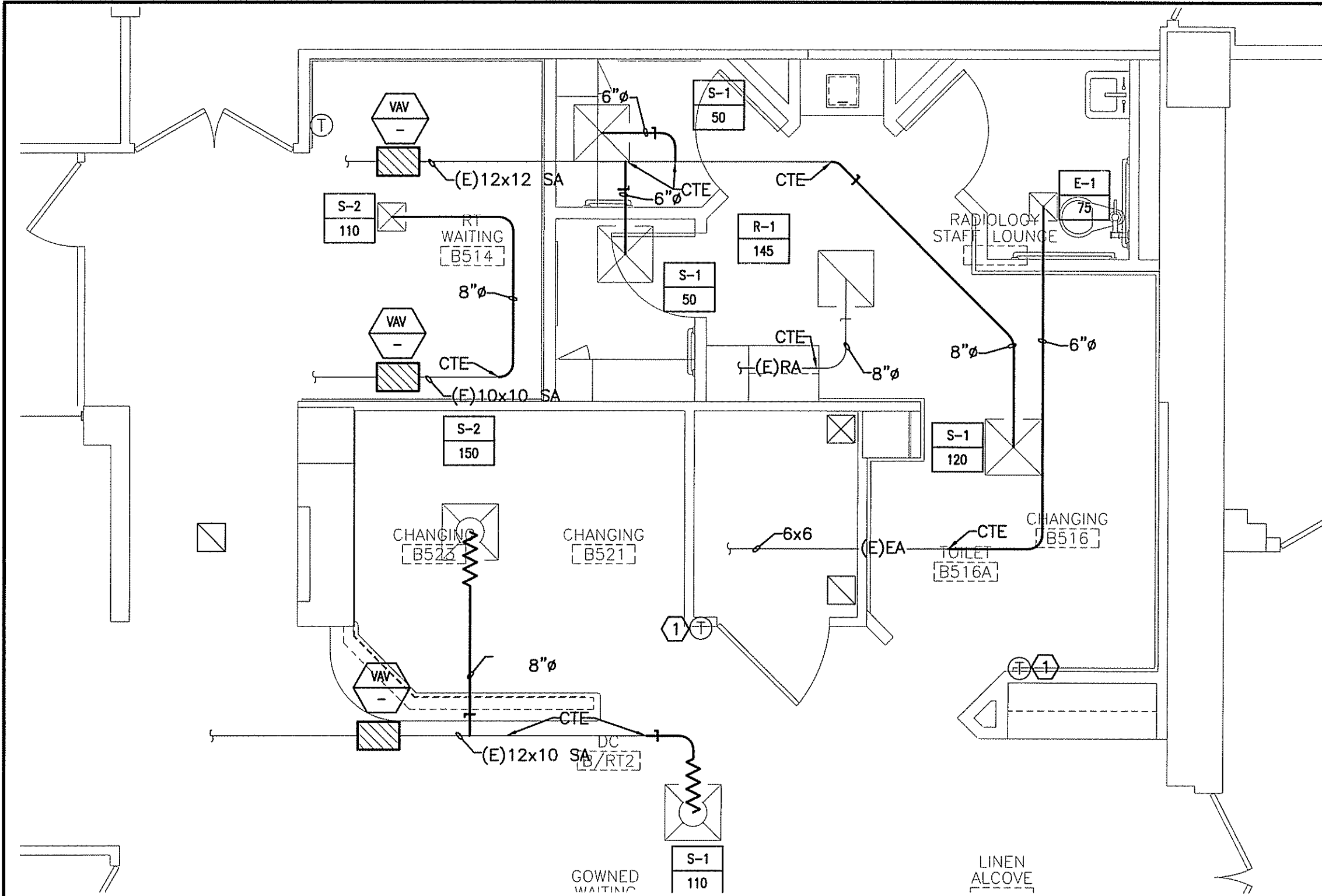
PROJECT:  
**MAINE MEDICAL CENTER  
RADIATION THERAPY RENOVATIONS**  
PORTLAND, MAINE

SCALE: 1/4"=1'-0"  
PROJECT MANAGER: CDP  
SHEET No. **MD102**  
JC/DRAWN BY: BAL  
A/E OF RECORD: FWJ  
SMRT CAD FILE: MD102-06043  
PROJECT No.: 06043  
DATE: 12-8-06

SHEET TITLE:  
**HVAC DEMOLITION PLAN**

REV	DESCRIPTION	DATE
0	ISSUED FOR CONSTRUCTION	12-8-06

**SMRT**  
ARCHITECTURE ENGINEERING PLANNING  
SMRT  
144 Fore Street/P.O.Box 618 PORTLAND, MAINE 04104  
tel. (207) 772-3846 / fax. (207) 772-1070



**KEYED NOTES:**

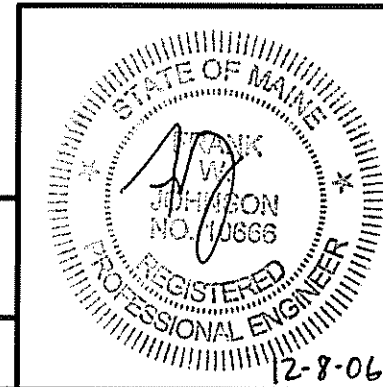
① RELOCATED PNEUMATIC THERMOSTAT.

A1

**HVAC PARTIAL FLOOR PLAN**

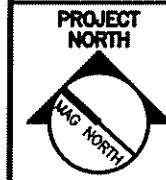
1/4" = 1'-0"

\*



CURRENT ISSUED STATUS:

**ISSUED FOR CONSTRUCTION**  
**12-8-06**



PROJECT:

**MAINE MEDICAL CENTER**  
**RADIATION THERAPY RENOVATIONS**  
PORTLAND, MAINE

SCALE: 1/4" = 1'-0"  
PROJECT MANAGER: CDP  
SHEET No. **MH101**  
JC/DRAWN BY: BAL  
A/E OF RECORD: FWJ  
SMRT CAD FILE: MH101-06043  
PROJECT No: 06043  
DATE: 12-8-06

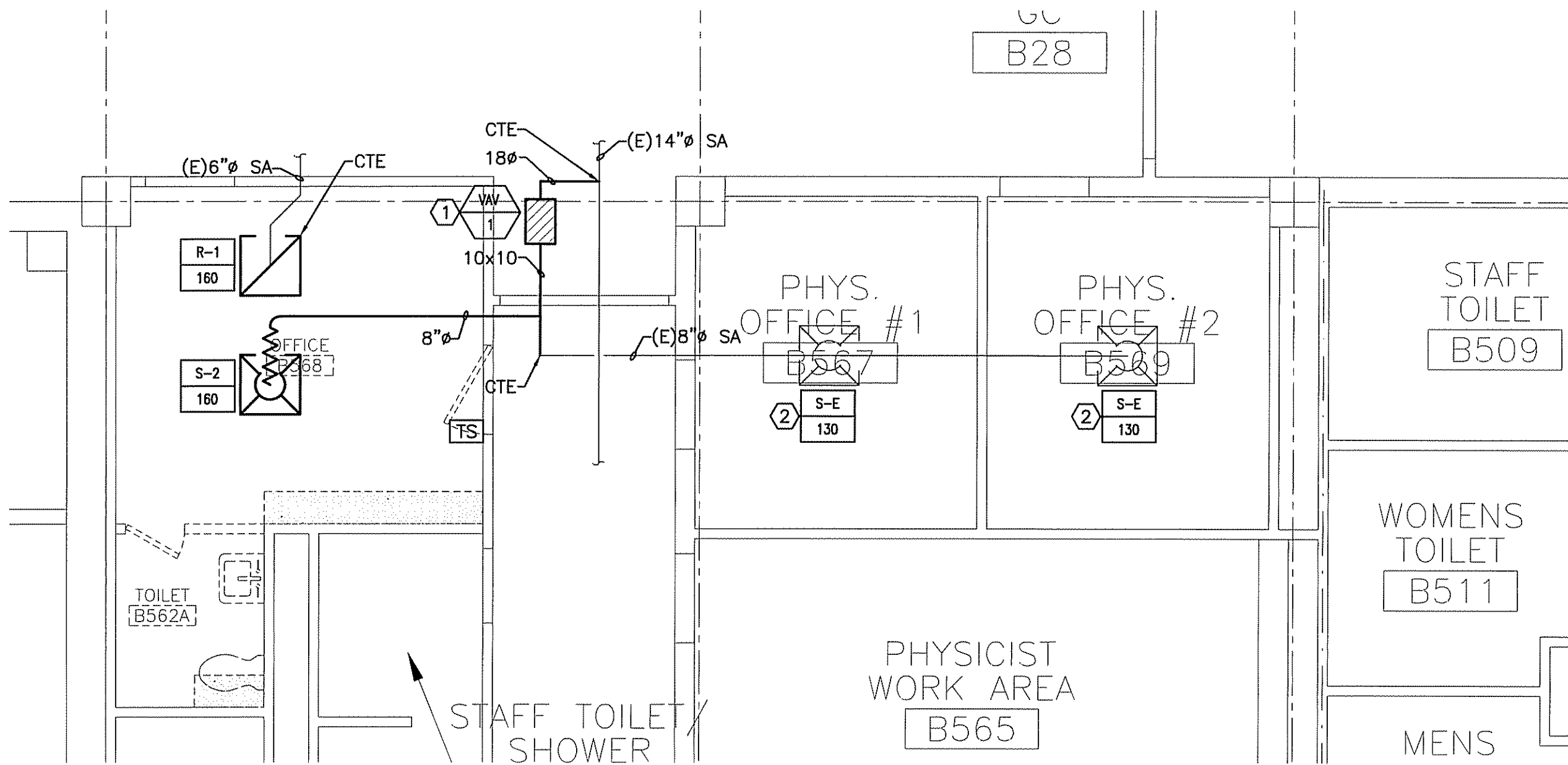
SHEET TITLE:

**HVAC PARTIAL FLOOR PLAN**

REV	DESCRIPTION	DATE
0	ISSUED FOR CONSTRUCTION	12-8-06

ARCHITECTURE ENGINEERING PLANNING  
SMRT  
144 Fore Street/P.O.Box 618 PORTLAND, MAINE 04104  
tel. (207) 772-3846 / fax. (207) 772-1070

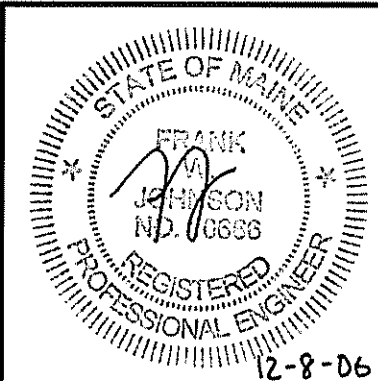




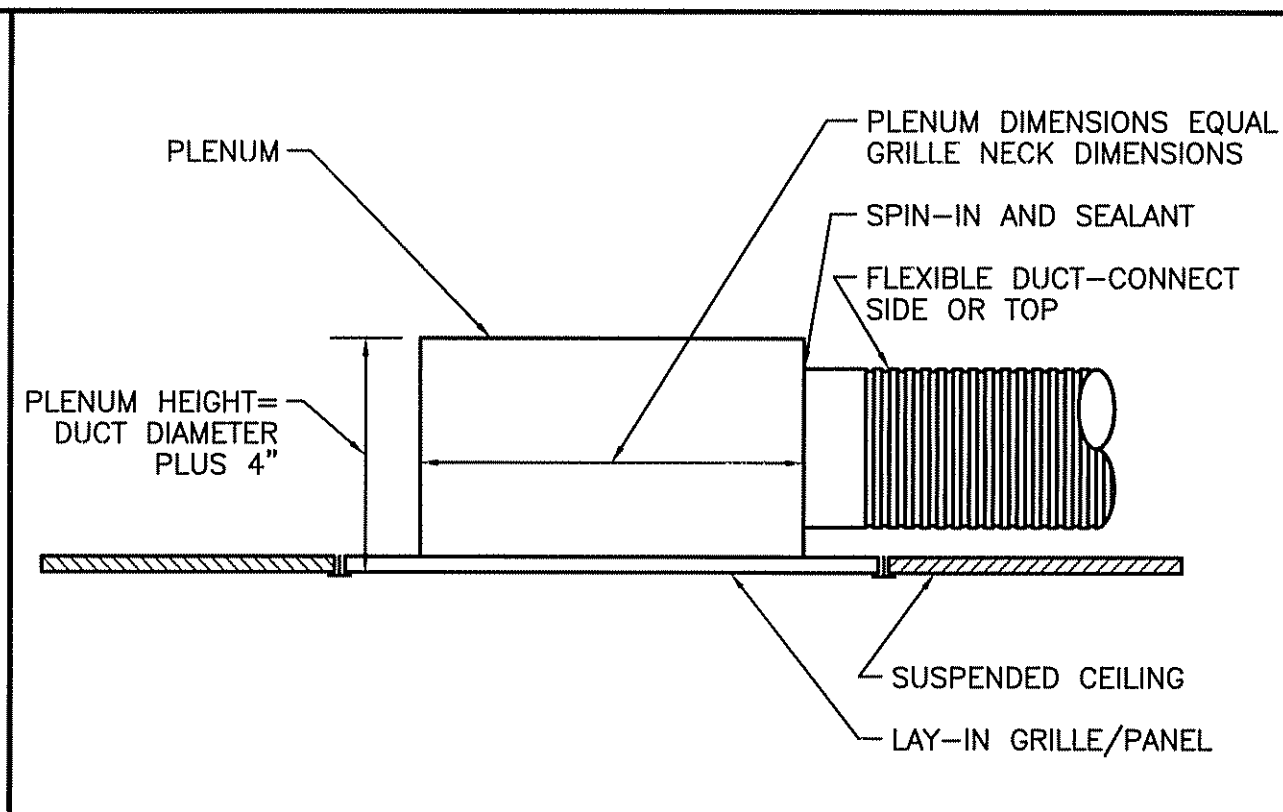
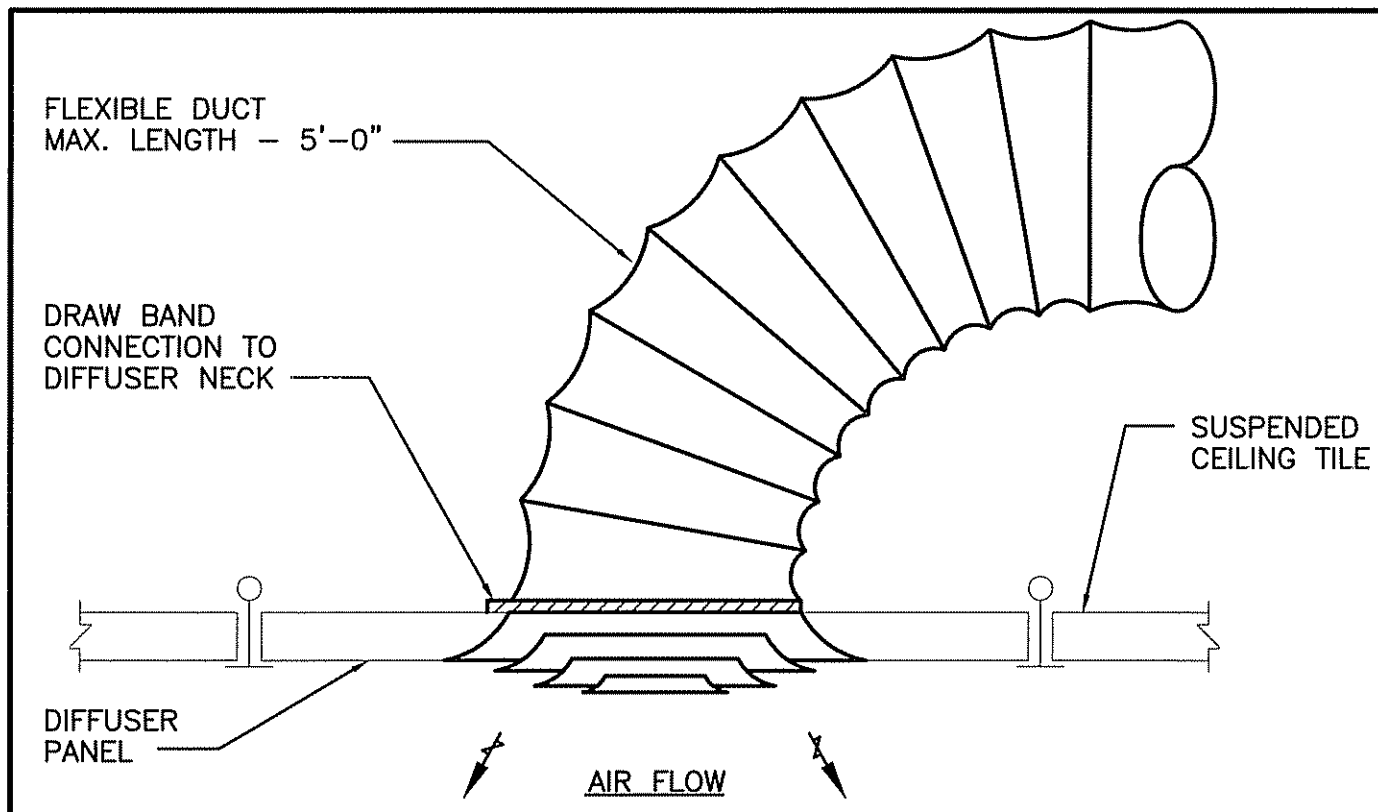
**KEYED NOTES:**

- ① PROVIDE 3/4" HWS&R PIPING CONNECTIONS
- ② REBALANCE EXISTING SUPPLY DIFFUSER TO VOLUME INDICATED

A1	HVAC PARTIAL RCP
1/4"=1'-0"	*

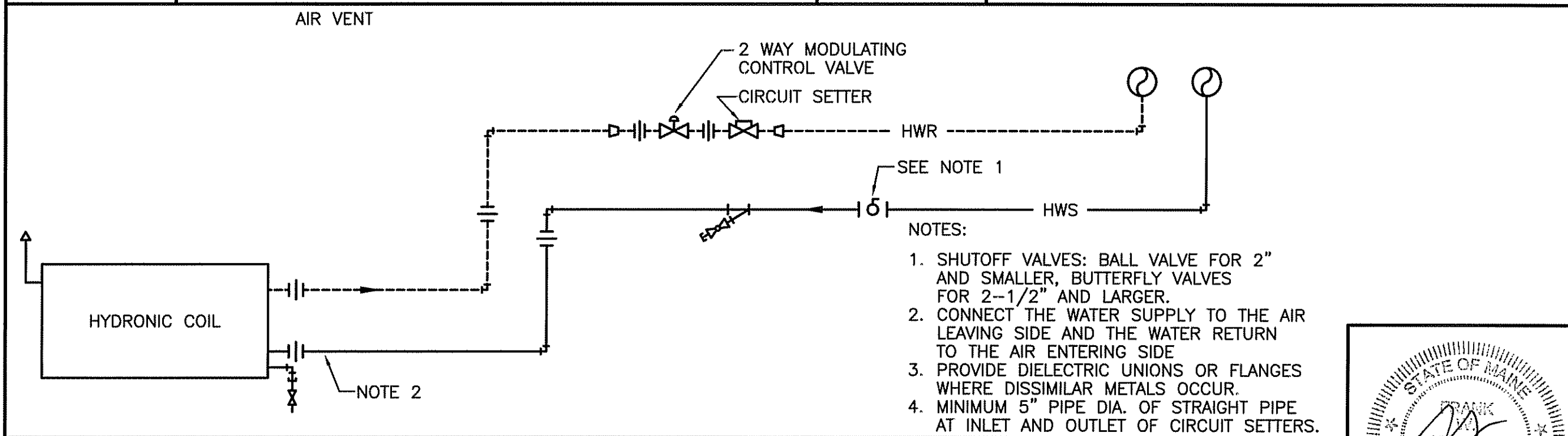


<p>PROJECT: <b>MAINE MEDICAL CENTER RADIATION THERAPY RENOVATIONS</b> PORTLAND, MAINE</p>	<p>SMRT ARCHITECTURE ENGINEERING PLANNING 144 Fore Street/P.O. Box 618 PORTLAND, MAINE 04104 tel. (207) 772-3846 / fax. (207) 772-1070</p>	<p>ISSUED FOR CONSTRUCTION 12-8-06 REV 0 DESCRIPTION DATE</p>	<p>SHEET TITLE: <b>HVAC PARTIAL FLOOR PLAN</b></p>
	<p>JC/DRAWN BY: BAL A/E OF RECORD: FWJ SMRT CAD FILE: MH102-06043 PROJECT No: 06043 DATE: 12-8-06</p>	<p>CURRENT ISSUED STATUS: <b>ISSUED FOR CONSTRUCTION 12-8-06</b></p>	
<p>SCALE: 1/4"=1'-0"</p>		<p>PROJECT No. <b>MH102</b> PROJECT MANAGER: CDP SHEET No. <b>MH102</b></p>	

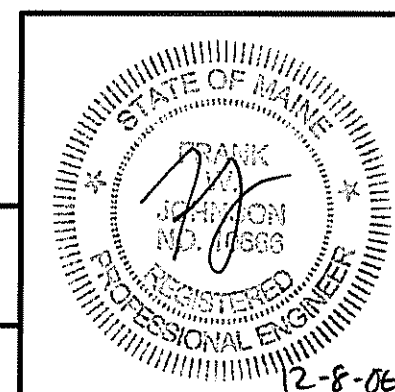


C1	FLEXIBLE DUCT
NOT TO SCALE	

C4	TYP. RETURN & TRANSFER GRILLE PLENUM
NOT TO SCALE	



A1	VAV BOX HW COIL, TWO-WAY VALVE
NOT TO SCALE	



PROJECT:	MAINE MEDICAL CENTER RADIATION THERAPY RENOVATIONS PORTLAND, MAINE
SHEET TITLE:	DETAILS
ISSUED FOR CONSTRUCTION	12-8-06
DATE	12-8-06
REV	DESCRIPTION
0	
SCALE:	AS NOTED
PROJECT MANAGER:	CDP
SHEET No.	M-501
JC/DRAWN BY:	BAL
A/E OF RECORD:	FWJ
SMRT CAD FILE:	M-501-06043
PROJECT No.:	06043
DATE:	12-8-06
CURRENT ISSUED STATUS:	<b>ISSUED FOR CONSTRUCTION</b> 12-8-06

**SM  
RT**

ARCHITECTURE ENGINEERING PLANNING  
SMART  
144 Fore Street/P.O. Box 618 PORTLAND, MAINE 04104  
tel. (207) 772-3846 / fax. (207) 772-1070



## VARIABLE AIR VOLUME (VAV) TERMINAL SCHEDULE

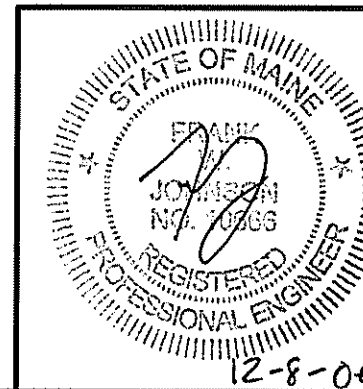
TAG	INLET SIZE	OUTLET SIZE	CFM MAX	CFM MIN	HEATING CFM	INLET STATIC PRESSURE MIN	APD MAX	HOT WATER HEATING COIL				TYPICAL UNIT MFG & MODEL NO.	NOTES:		
								ROWS	MBH	EAT. °F	LAT. °F			GPM 180 EWT	WPD FT HD
VAV-1	7	12x10	420	180	180	0.5	0.14	1	7.7	55	95	0.5	0.2	TITUS, DESV 07	

NOTES:

## REGISTER, DIFFUSER & GRILLE SCHEDULE

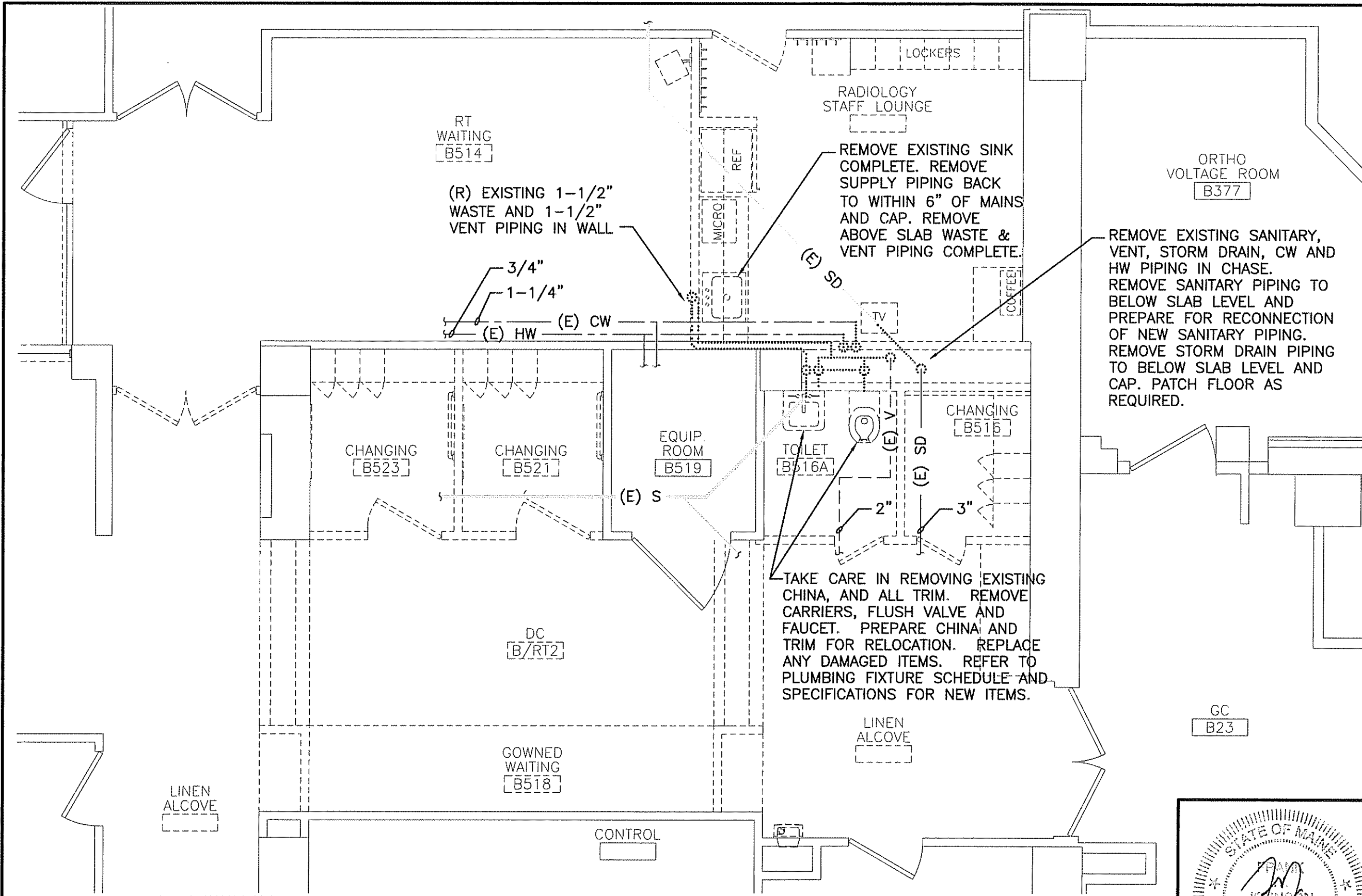
TAG	CFM	NECK SIZE	TYPE	ΔP	MAX NC	TITUS MODEL NO.	NOTES
S-1	0-120	6ø- 9x9	CEILING DIFF.	0.08	20	TITUS, TDC	①
S-2	121-240	8ø - 12x12	CEILING DIFF.	0.08	20	TITUS, TDC	①
R-1	0-220	8x8	RETURN GRILLE	0.10	28	TITUS, 355 RL	①
E-1	0-220	8x8	EXHAUST GRILLE	0.07	26	TITUS, 350 FL	②

NOTES: ① 24x24 LAY-IN  
 ② SURFACE MOUNT



ISSUED FOR CONSTRUCTION	0	DESCRIPTION	12-8-06	DATE			
PROJECT: MAINE MEDICAL CENTER RADIATION THERAPY RENOVATIONS PORTLAND, MAINE				SHEET TITLE: SCHEDULES			
PROJECT NORTH 		JC/DRAWN BY: BAL A/E OF RECORD: FWJ		SMRT CAD FILE: M-601-06043 PROJECT No: 06043		DATE: 12-8-06	
CURRENT ISSUED STATUS: <b>ISSUED FOR CONSTRUCTION</b> 12-8-06				SCALE: NTS PROJECT MANAGER: CDP		SHEET No. <b>M-601</b> <small>© copyright 2006 SMRT INC.</small>	



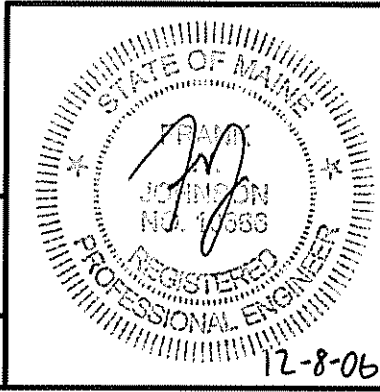


PROJECT:	MAINE MEDICAL CENTER RADIATION THERAPY RENOVATIONS PORTLAND, MAINE		
ISSUED FOR CONSTRUCTION	12-8-06	DATE	
REV	DESCRIPTION		
0			

SHEET TITLE:	PLUMBING DEMOLITION PLAN
--------------	--------------------------

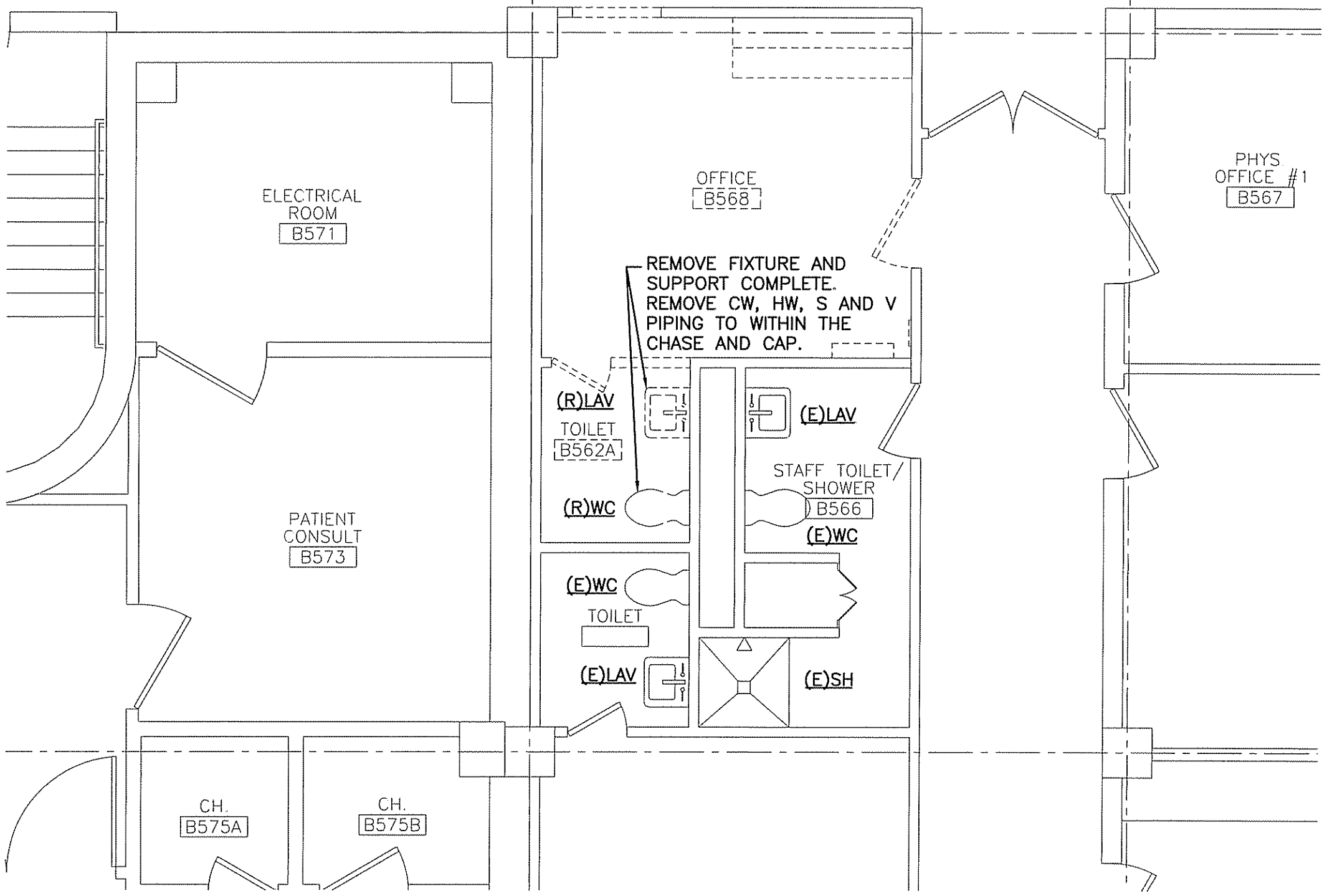
PROJECT NORTH	BAL
MAC NORTH	FWJ
JC/DRAWN BY:	BAL
A/E OF RECORD:	FWJ
SMRT CAD FILE:	PD101-06043
PROJECT No.:	06043
DATE:	12-8-06

CURRENT STATUS:	ISSUED FOR CONSTRUCTION 12-8-06
SCALE:	1/4" = 1'-0"
PROJECT MANAGER:	CDP
SHEET No.:	PD101



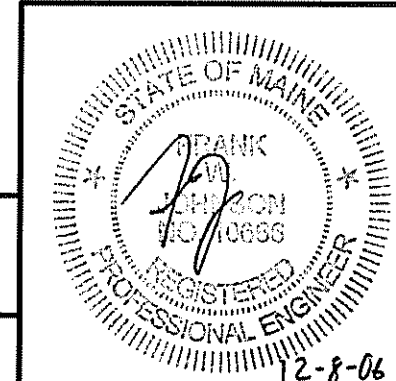
A1  
1/4"=1'-0"

PLUMBING DEMOLITION PLAN



A1  
1/4"=1'-0"

PARTIAL FLOOR PLAN



CURRENT ISSUED STATUS:  
**ISSUED FOR CONSTRUCTION**  
12-8-06

SCALE: 1/4"=1'-0"  
PROJECT MANAGER: CDP  
SHEET No. PD102  
© COPYRIGHT 2006 SMRT INC.

PROJECT NORTH

JC/DRAWN BY: BAL  
A/E OF RECORD: FWJ  
SMRT CAD FILE: PL102-06043  
PROJECT No: 06043  
DATE: 12-8-06

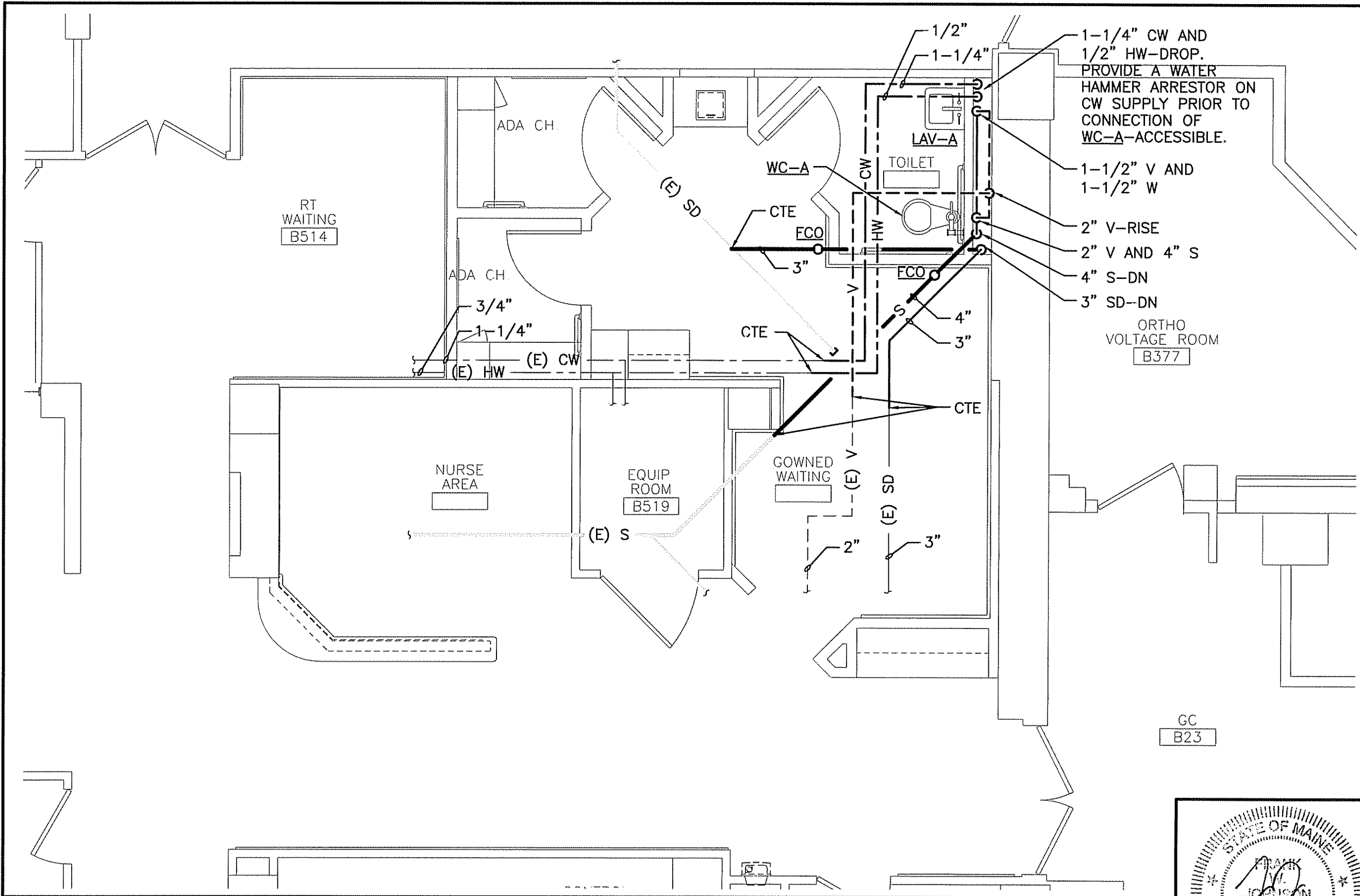
PROJECT:  
MAINE MEDICAL CENTER  
RADIATION THERAPY RENOVATIONS  
PORTLAND, MAINE

SHEET TITLE:  
RADIOLOGY STAFF LOUNGE  
DEMOLITION PLAN

REV	DESCRIPTION	DATE
0	ISSUED FOR CONSTRUCTION	12-8-06

ARCHITECTURE ENGINEERING PLANNING  
SMRT  
144 Fore Street/P.O. Box 618 PORTLAND, MAINE 04104  
tel. (207) 772-3846 / fax. (207) 772-1070

**SMRT**



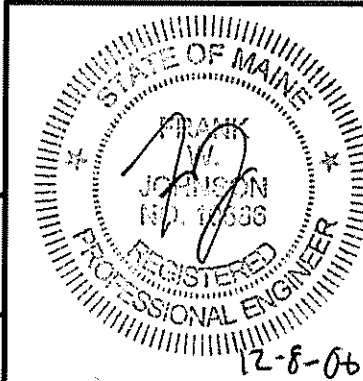
0	ISSUED FOR CONSTRUCTION	12-8-06	DATE
	DESCRIPTION		

**SMRT**  
 ARCHITECTURE ENGINEERING PLANNING  
 144 Fore Street/P.O. Box 618 PORTLAND, MAINE 04104  
 tel. (207) 772-3846 / fax. (207) 772-1070

PROJECT: **MAINE MEDICAL CENTER RADIATION THERAPY RENOVATIONS**  
 PORTLAND, MAINE  
 SHEET TITLE: **RADIOLOGY THERAPY PLUMBING PLAN**

	BAL
FWJ	
PL101-06043	
06043	
12-8-06	

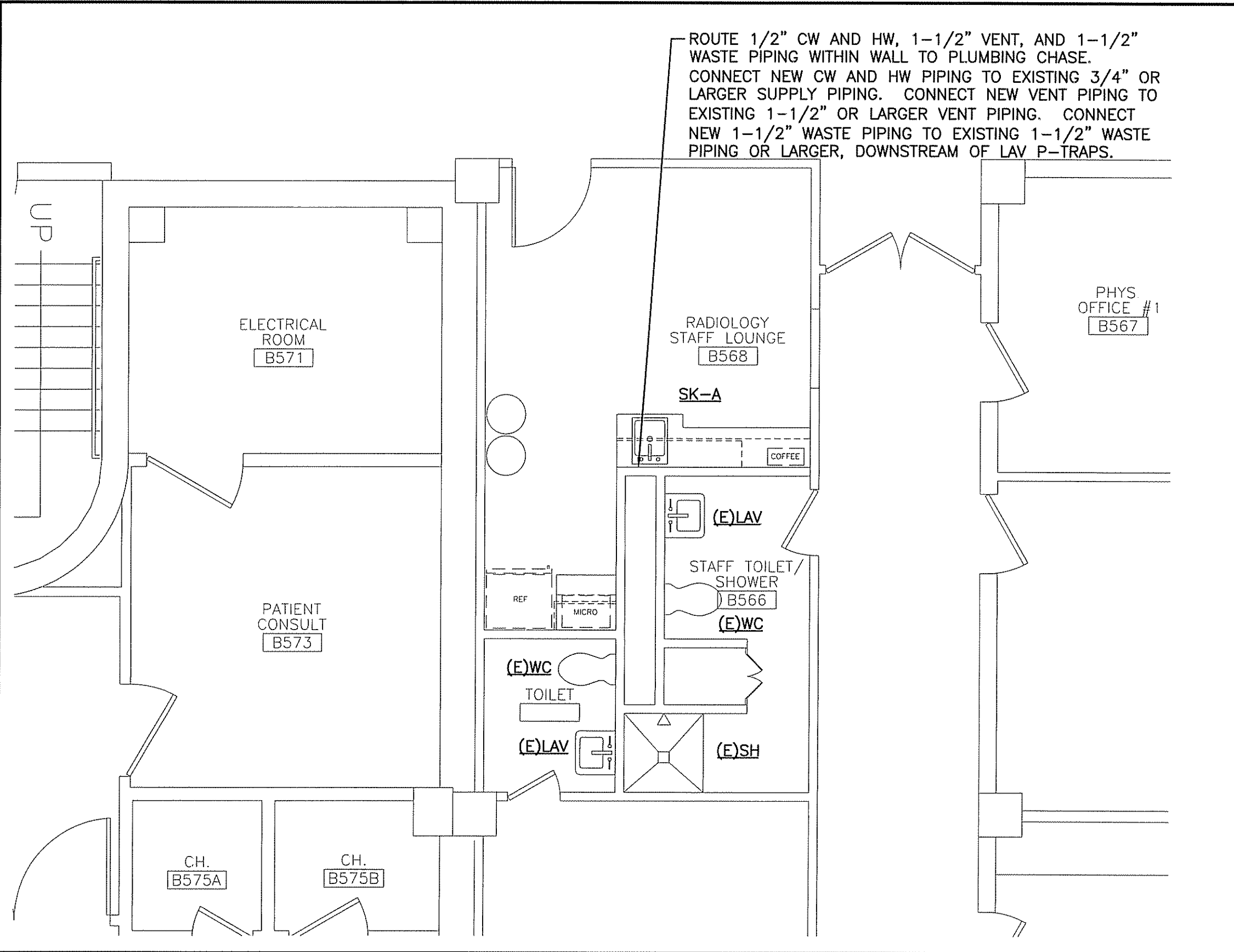
CURRENT ISSUED STATUS: **ISSUED FOR CONSTRUCTION 12-8-06**  
 SCALE: 1/4" = 1'-0"  
 PROJECT MANAGER: CDP  
 SHEET No. **PL101**  
 © COPYRIGHT 2006 SMRT INC.



A1

PARTIAL FLOOR PLAN

1/4" = 1'-0"

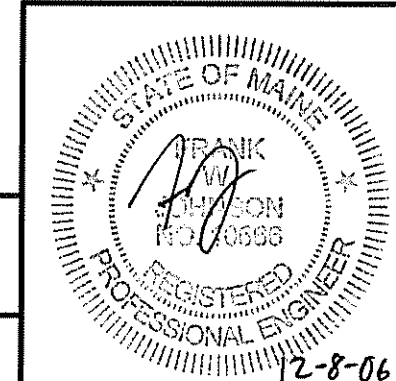


ROUTE 1/2" CW AND HW, 1-1/2" VENT, AND 1-1/2" WASTE PIPING WITHIN WALL TO PLUMBING CHASE. CONNECT NEW CW AND HW PIPING TO EXISTING 3/4" OR LARGER SUPPLY PIPING. CONNECT NEW VENT PIPING TO EXISTING 1-1/2" OR LARGER VENT PIPING. CONNECT NEW 1-1/2" WASTE PIPING TO EXISTING 1-1/2" WASTE PIPING OR LARGER, DOWNSTREAM OF LAV P-TRAPS.

A1

PARTIAL FLOOR PLAN

1/4"=1'-0"



CURRENT ISSUED STATUS:

**ISSUED FOR CONSTRUCTION**  
12-8-06



PROJECT NORTH

JC/DRAWN BY: BAL  
A/E OF RECORD: FWJ  
SMRT CAD FILE: PL102-06043  
PROJECT No.: 06043  
DATE: 12-8-06

SCALE: 1/4"=1'-0"  
PROJECT MANAGER: CDP  
SHEET No. **PL102**  
© COPYRIGHT 2006 SMRT INC.

PROJECT:  
**MAINE MEDICAL CENTER  
RADIATION THERAPY RENOVATIONS**  
PORTLAND, MAINE

SHEET TITLE:  
**RADIOLOGY STAFF LOUNGE  
PLUMBING PLAN**

REV	DESCRIPTION	DATE
0	ISSUED FOR CONSTRUCTION	12-8-06

ARCHITECTURE ENGINEERING PLANNING  
SMRT  
144 Fore Street/P.O. Box 618 PORTLAND, MAINE 04104  
tel. (207) 772-3846 / fax. (207) 772-1070



## PLUMBING FIXTURE SCHEDULE

TAG	DESCRIPTION	FIXTURE	FAUCET/DRAIN	TRIM	SUPPORT	NOTES
WC-A	WALL MOUNTED WATER CLOSET - ADA	EXISTING CHINA TO BE RELOCATED	SLOAN ROYAL #111 YO EXPOSED FLUSH VALVE 1.6 GPF	EXISTING SEAT TO BE RELOCATED	ZURN #1203/4-XH	
LAV-A	WALL-HUNG LAVATORY - ADA	EXISTING CHINA TO BE RELOCATED	CHICAGO #786-E29CP FAUCET, EXISTING DRAIN TO BE RELOCATED	EXISTING P-TRAP AND TRIM TO BE RELOCATED	ZURN #1231	①
SK-A	GENERAL PURPOSE SINGLE BOWL SINK - ADA	JUST #US-ADA-1620-A SINGLE BOWL, 16"x20"x6-1/2" DEPTH, 304 SS, 18 GAUGE	CHICAGO #786-E29CP FAUCET JUST #J-ADA-15-FS OFFSET DRAIN, CHROME PLATED FINISHES	McGUIRE ANGLE STOPS, P-TRAP, ESCUTCHEONS AND RISERS-CHROME PLATED	INTEGRAL	①

NOTES: ① INSULATE EXPOSED PIPING - TRUEBRO #102G.

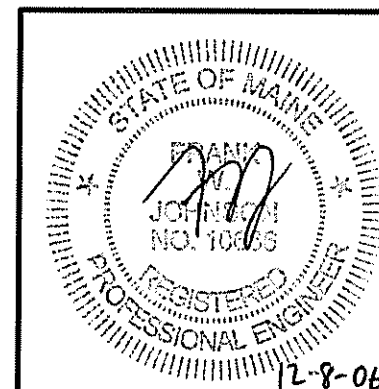
### SHOCK ABSORBER SCHEDULE

TYPE	FIXTURE UNIT RATING	BASIS OF DESIGN	
		MANUF.	FIGURE NO.
'A'	1-10	ZURN	100
'B'	12-32	ZURN	200
'C'	33-60	ZURN	300
'D'	61-113	ZURN	400
'E'	114-154	ZURN	500
'F'	155-330	ZURN	600

### PLUMBING FIXTURE CONNECTION SCHEDULE

FIXTURE	CW	HW	WASTE	VENT	NOTES
FLUSH VALVE WATER CLOSET	1"	-	4"	2"	①
LAVATORY	1/2"	1/2"	1-1/2"	1-1/2"	②
SINK	1/2"	1/2"	1-1/2"	1-1/2"	②

NOTES: ① PROVIDE SHOCK ABSORBER W/ ISOLATION VALVE, ACCESSIBLE.  
 ② PROVIDE AIR CHAMBERS ON HW & CW CONNECTIONS.



PROJECT: MAINE MEDICAL CENTER RADIATION THERAPY RENOVATIONS  
PORTLAND, MAINE

SHEET TITLE: SCHEDULES

ISSUED FOR CONSTRUCTION 12-8-06

SCALE: NTS

PROJECT MANAGER: CDP

SHEET No. PL601

JC/DRAWN BY: BAL

A/E OF RECORD: FWJ

SMRT CAD FILE: PL601-06043

PROJECT No: 06043

DATE: 12-8-06

DATE: 12-8-06

ISSUED FOR CONSTRUCTION 12-8-06

SMRT ARCHITECTURE ENGINEERING PLANNING  
 144 Fore Street/P.O. Box 618 PORTLAND, MAINE 04104  
 tel. (207) 772-3846 / fax. (207) 772-1070