



Maine Medical Center Portland, Maine

ASU INTAKE (AMBULATORY SURGERY RENOVATION)
MAINE MEDICAL CENTER PORTLAND, MAINE

FOR PERMITTING AND CONSTRUCTION 20 JULY 2005

INDEX OF DRAWINGS:

ARCHITECTURAL :

A0-1	ARCHITECTURAL STANDARD GRAPHICS
A1-1	ASU INTAKE MECHANICAL REVISION PLANS
A1-2	ASU INTAKE MECHANICAL REVISION PLANS
A1-2	PARTITION WALLS, SCHEDULE, DETAILS AND INTERIOR ELEVATIONS
M-1	ASU INTAKE MECHANICAL REVISION PLANS
E-1	LIGHTING AND FIREALARM PLAN
E-2	POWER DISTRIBUTION PLAN
E-3	DEMOLITION PLAN, SCHEDULES, NOTES AND SYMBOLS

OWNER:


Maine Medical Center
22 Bramhall Street
Portland, Maine 04102
t: (207) 662-0111
f: (207) 662-65 (Facilities)
Project Manager: Nancy Ilnes

ARCHITECT:


Morttschwitzer
ENVIRONMENTAL HEALTH
One Dana Street
Portland, Maine 04101
t: (207) 773-8841
f: (207) 773-8840
www.morttschwitzer.com

MECHANICAL:

JOHNSON & JORDAN
18 Mussey Road
Scarborough, Maine 04074
t: (207) 883-8345
f: (207) 883-8619

ELECTRICAL:

ELECTRICAL DESIGN CONSULTANTS
P. O. Box 282
Long Island, Maine 04050
t: (207) 766-5041



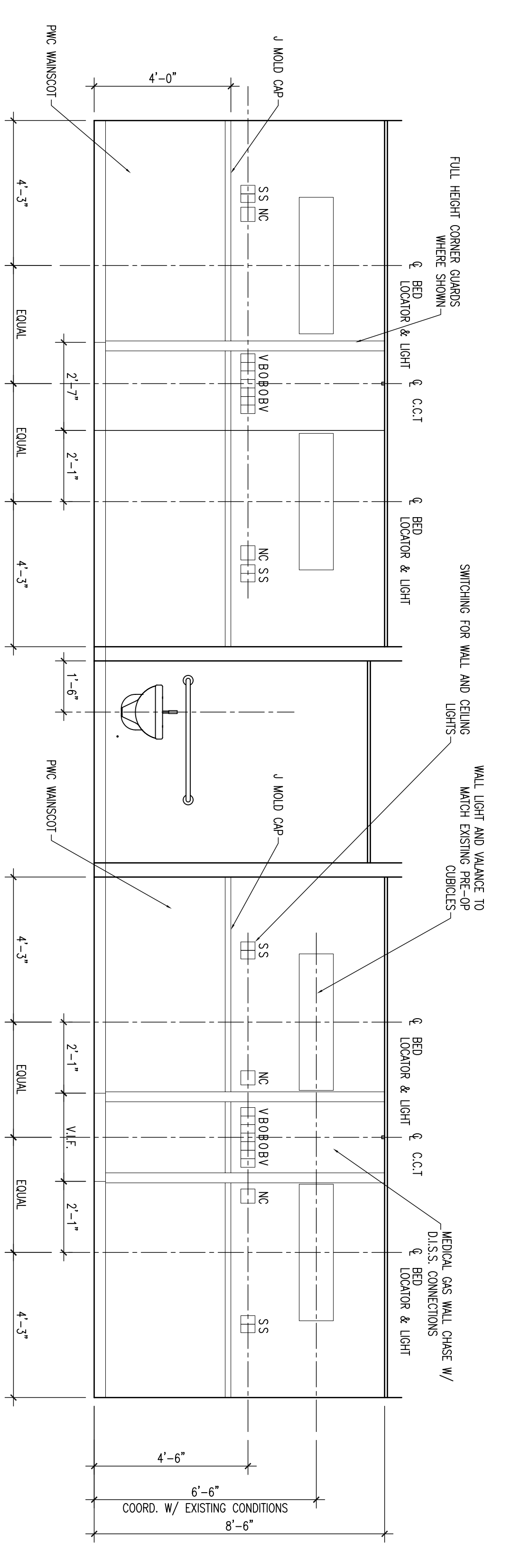
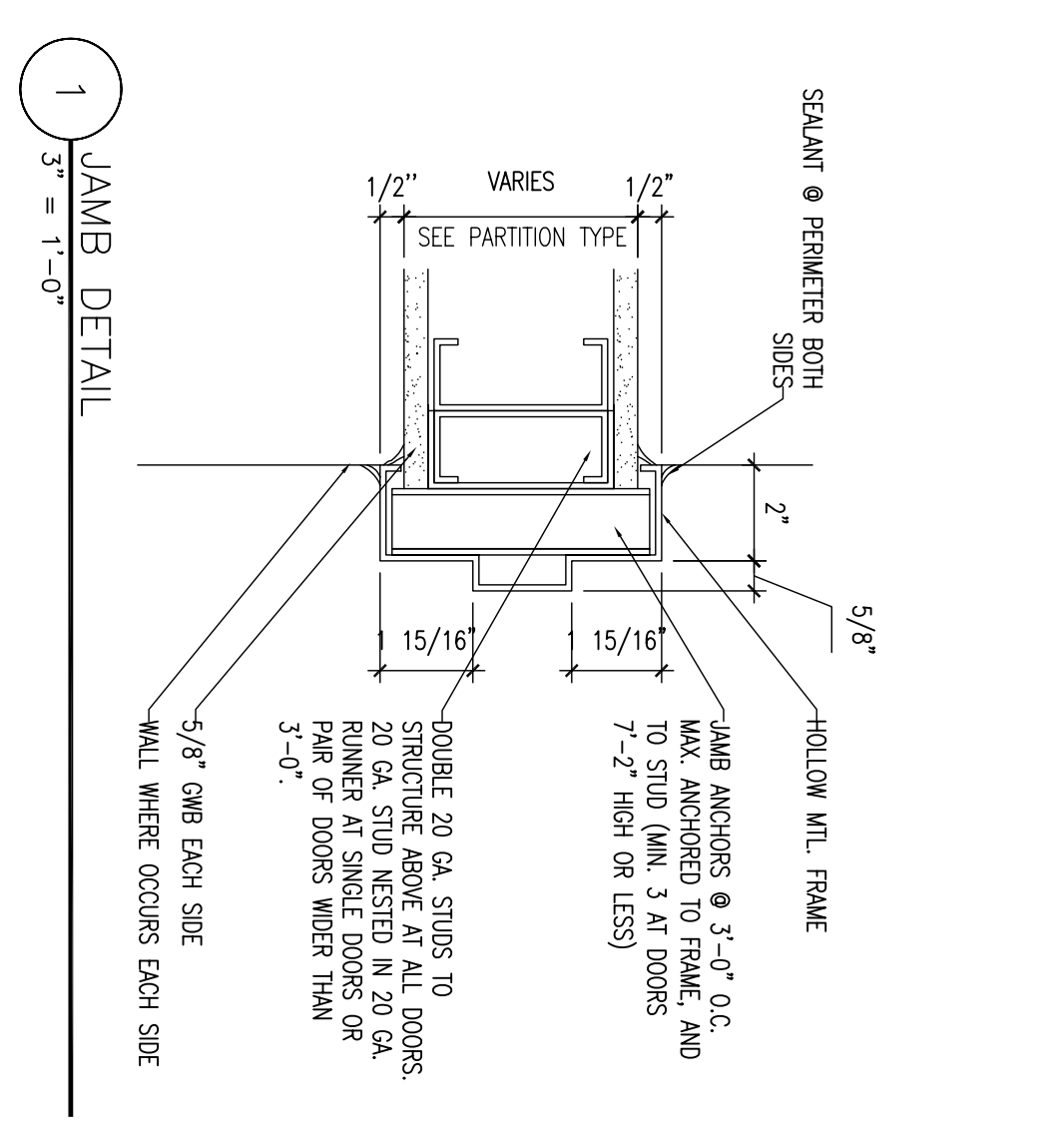
ASU INTAKE
(Ambulatory Surgery
Renovation)

Morriswitzer Project Number: 25014
Date: 1 JUNE 2005
Scale: AS NOTED

Sheet Title and Number: PARTITION TYPES, SCHEDULES, DETAILS AND INTERIOR ELEVATIONS

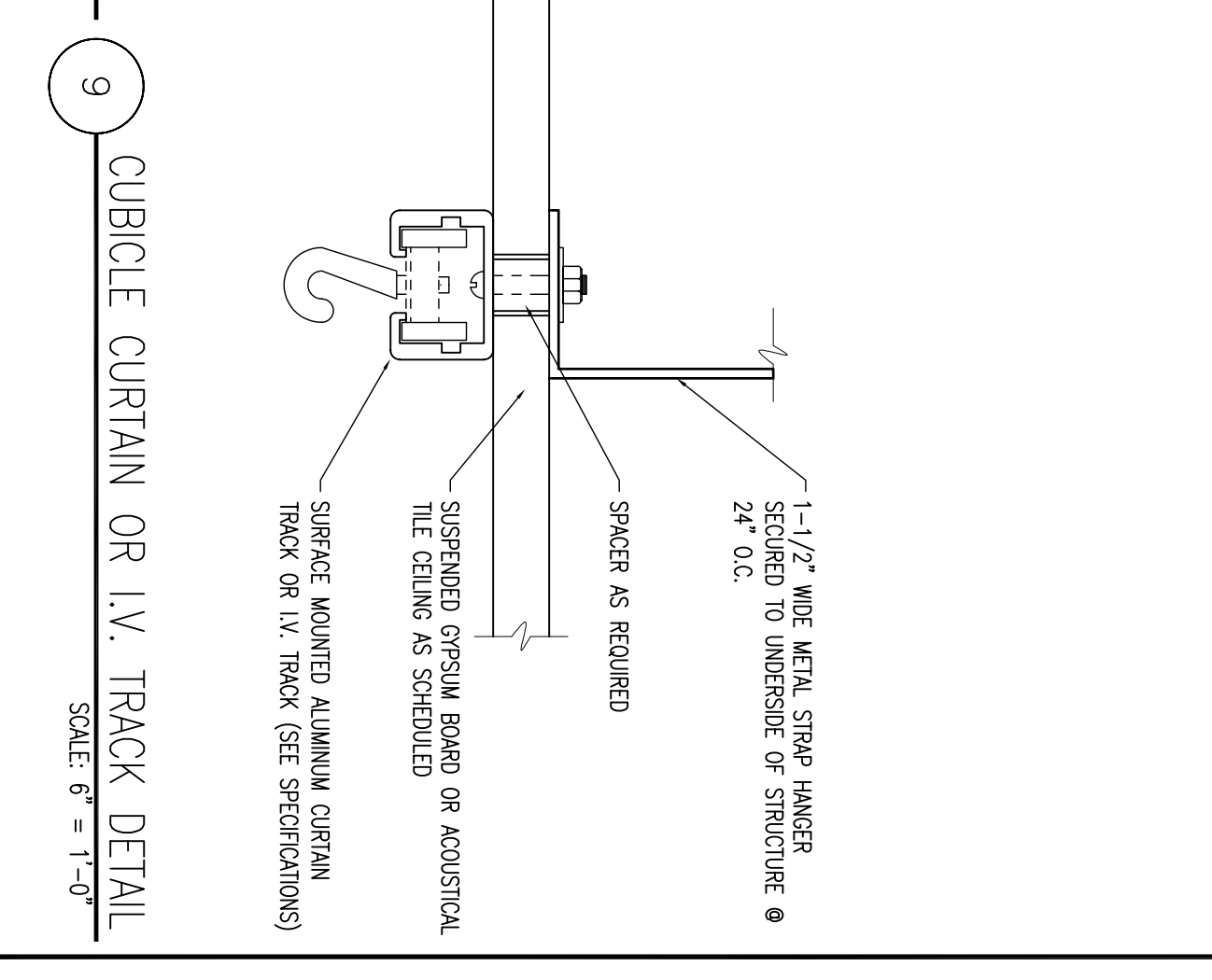
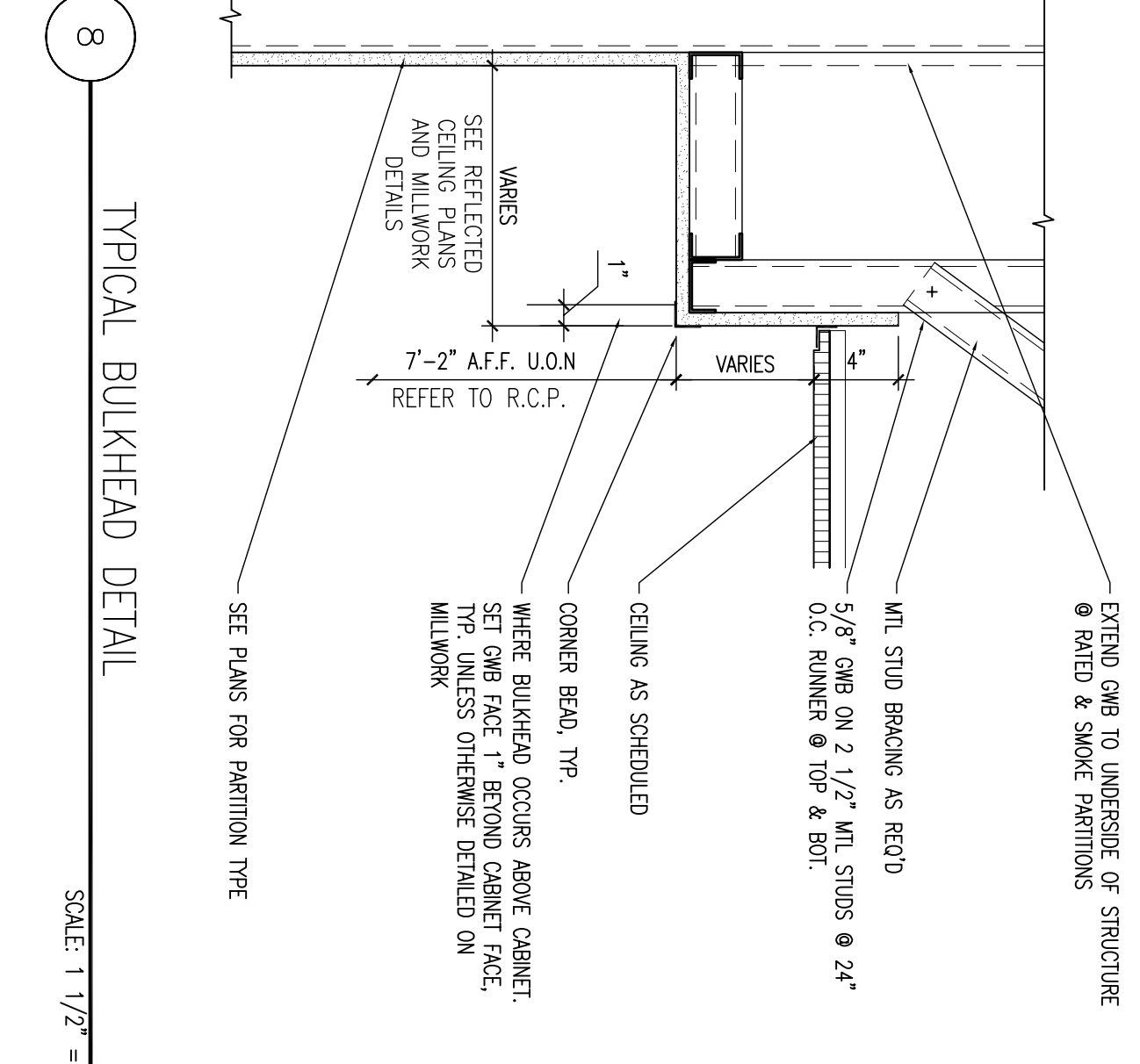
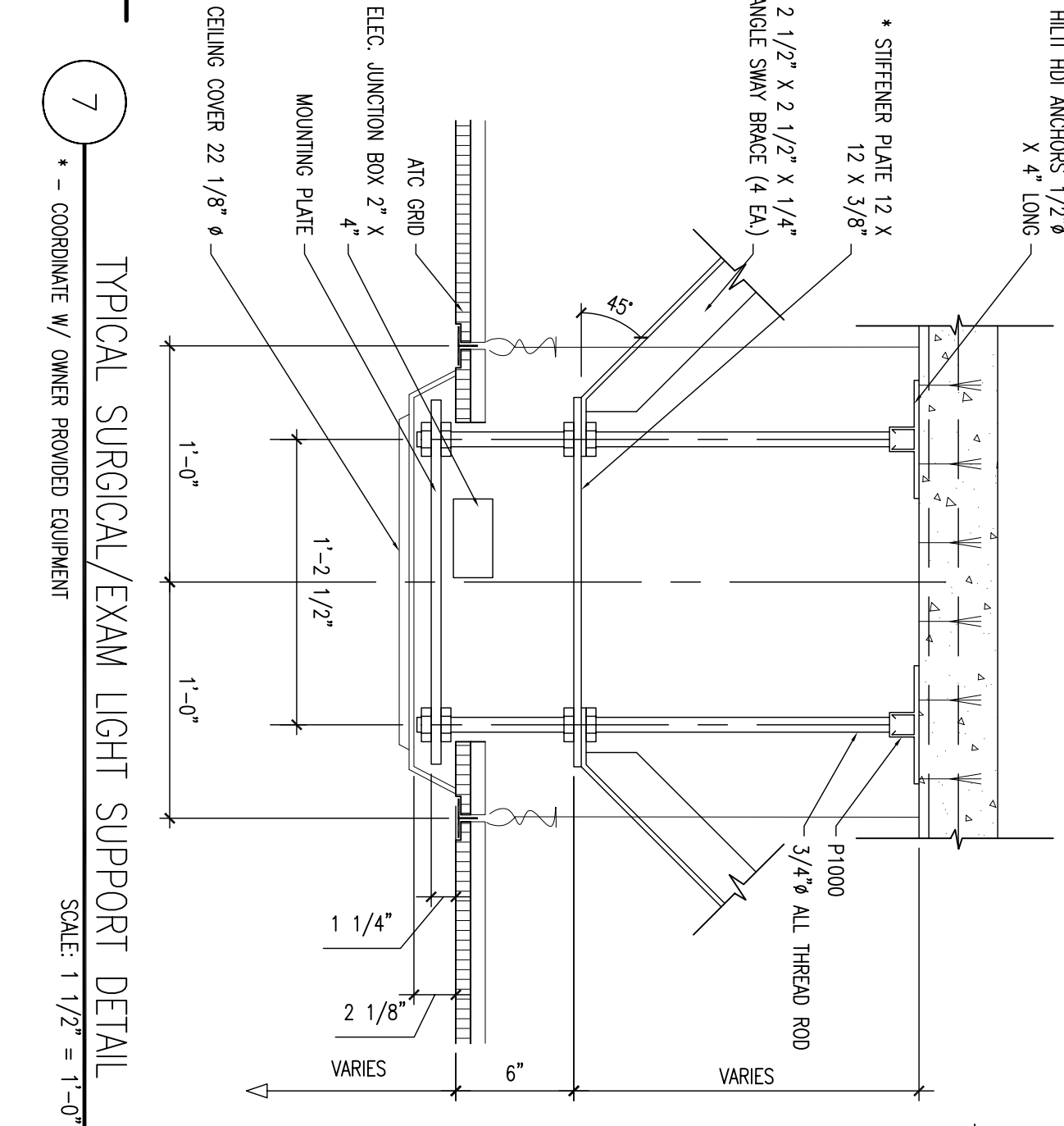
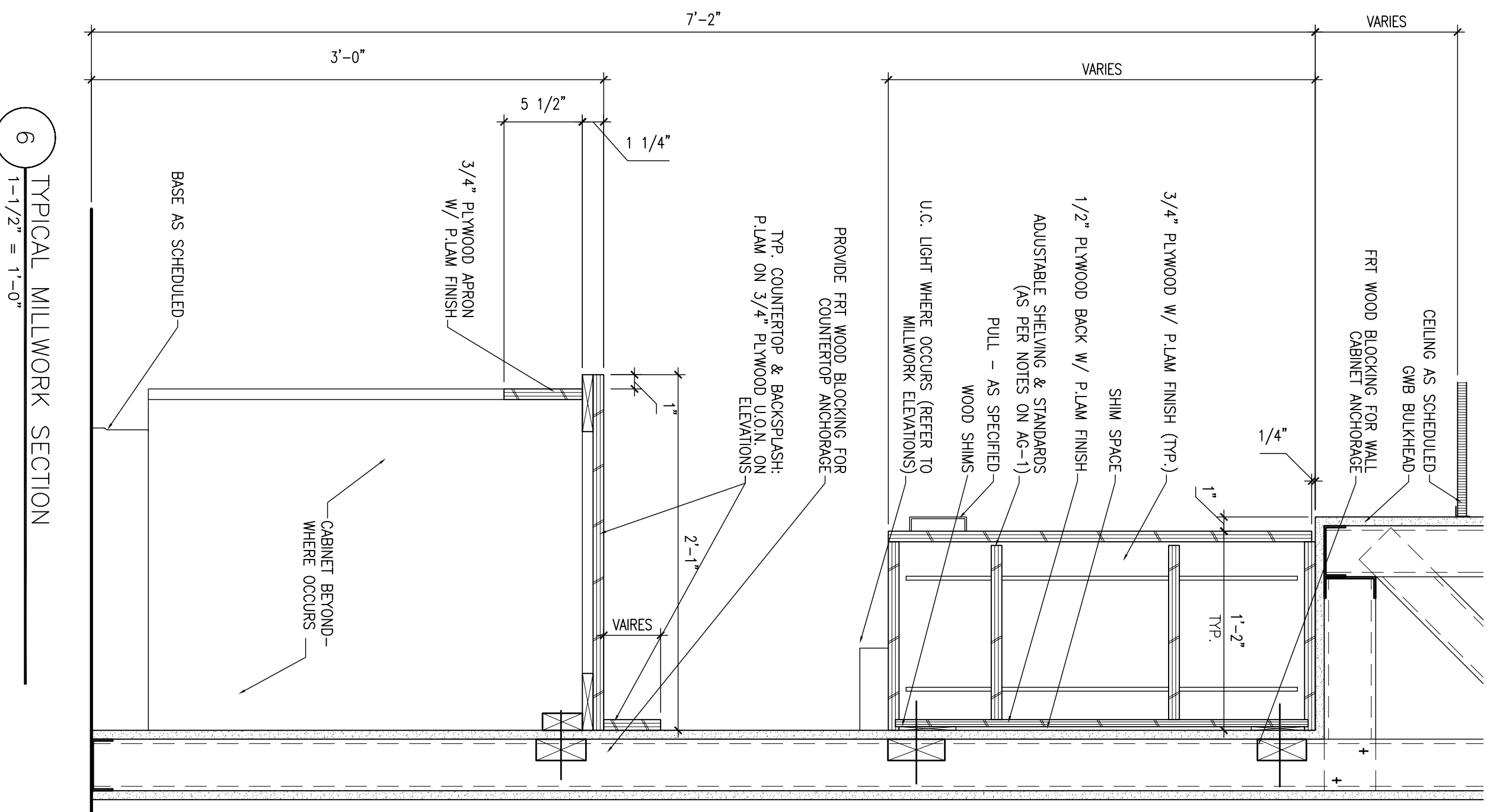
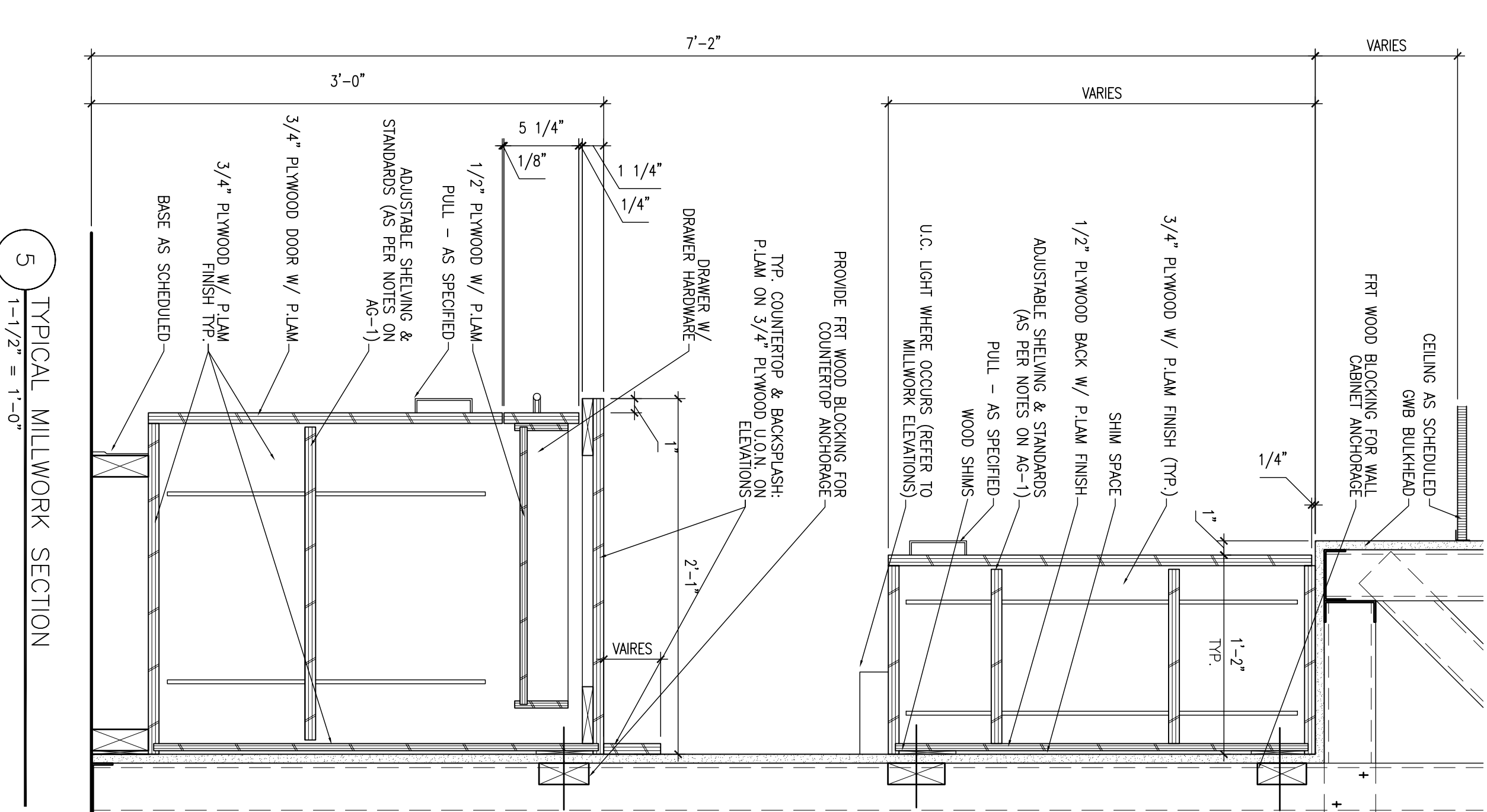
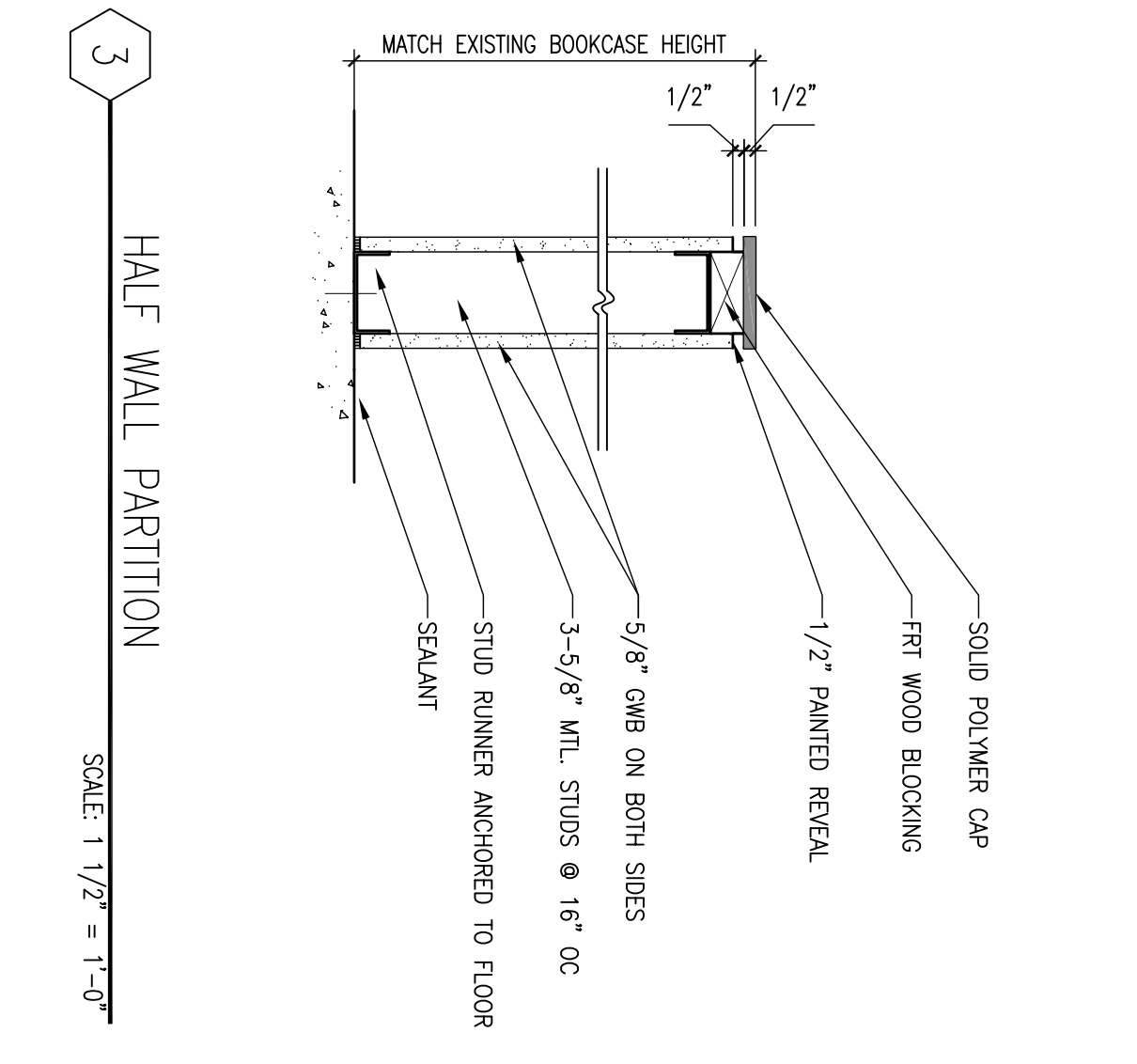
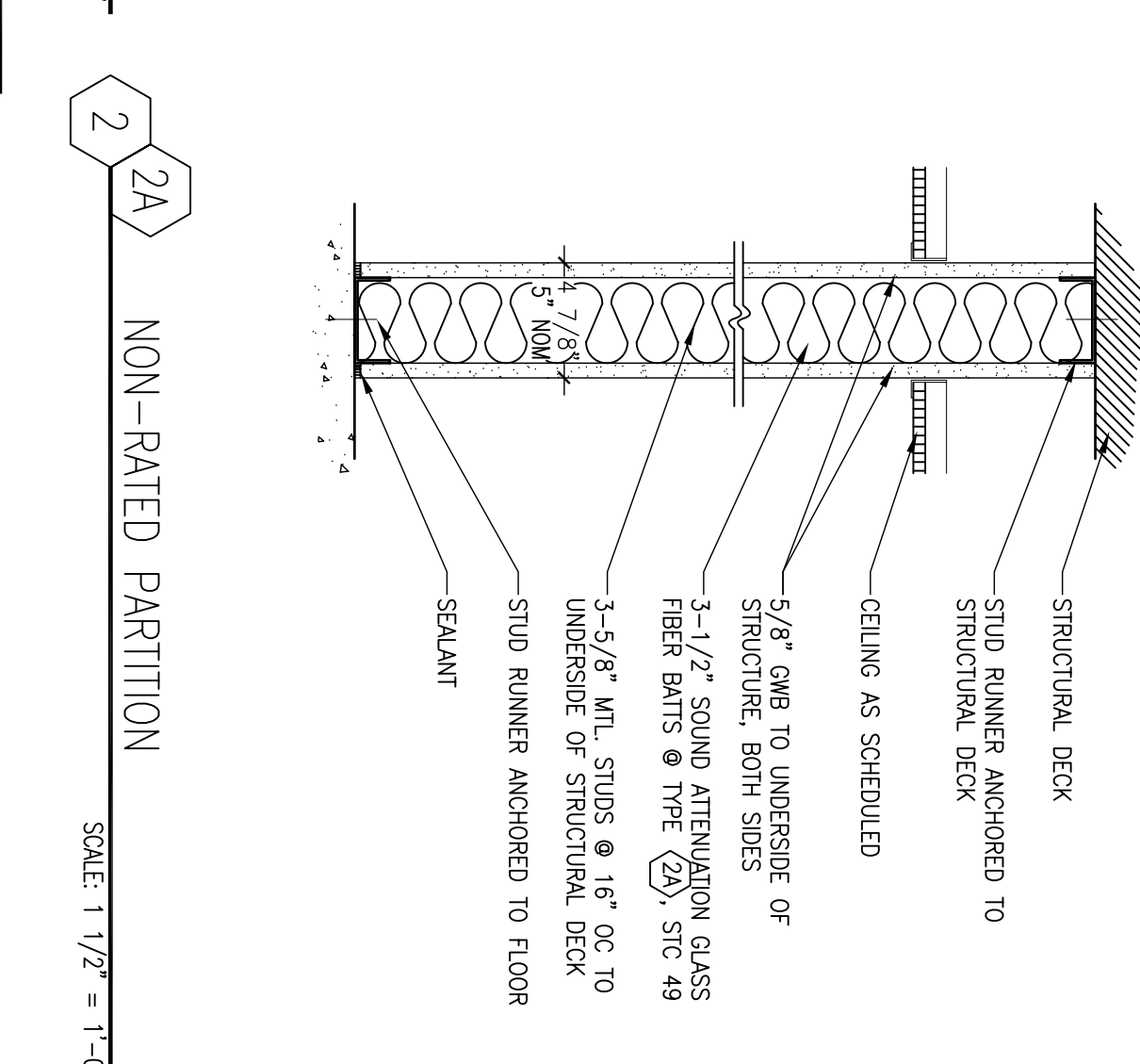
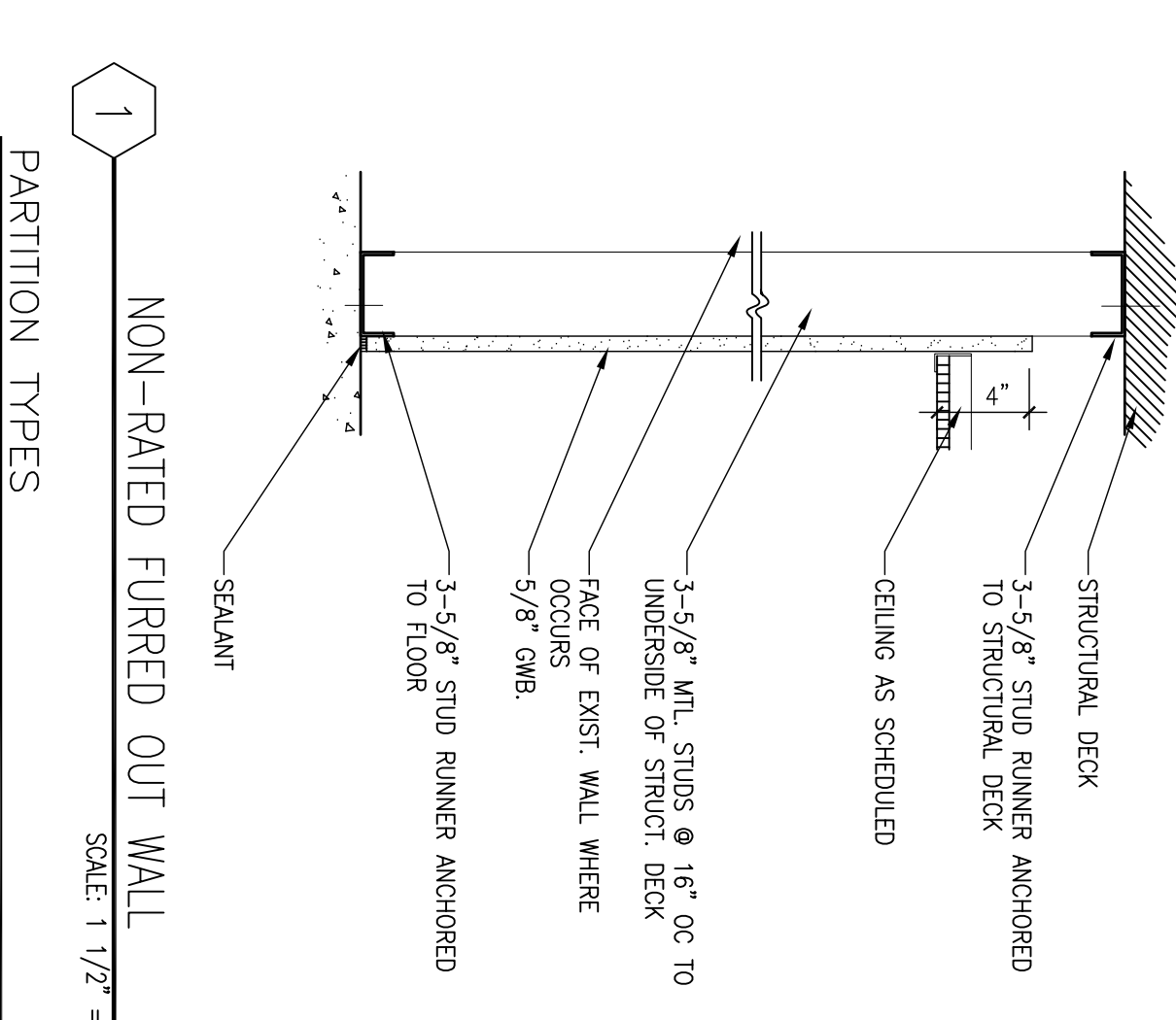
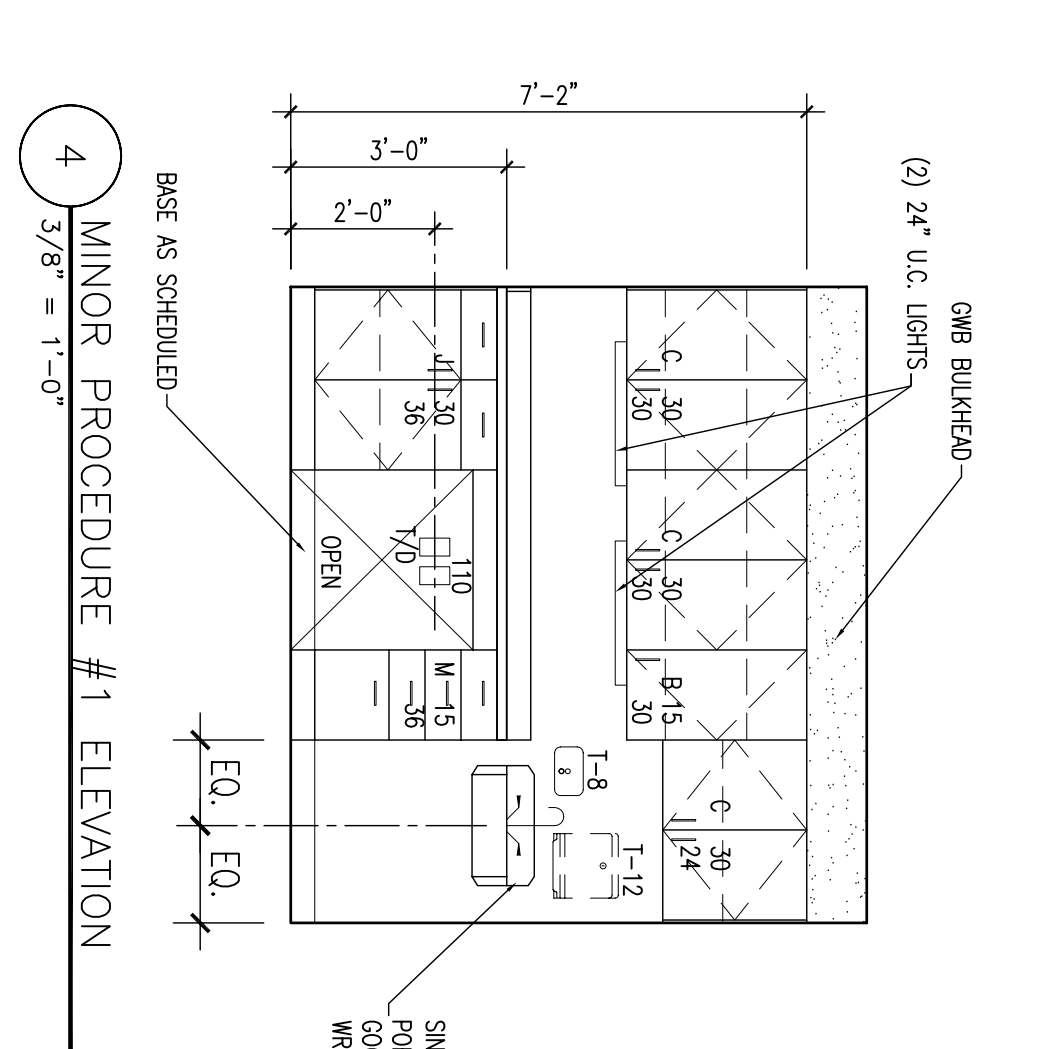
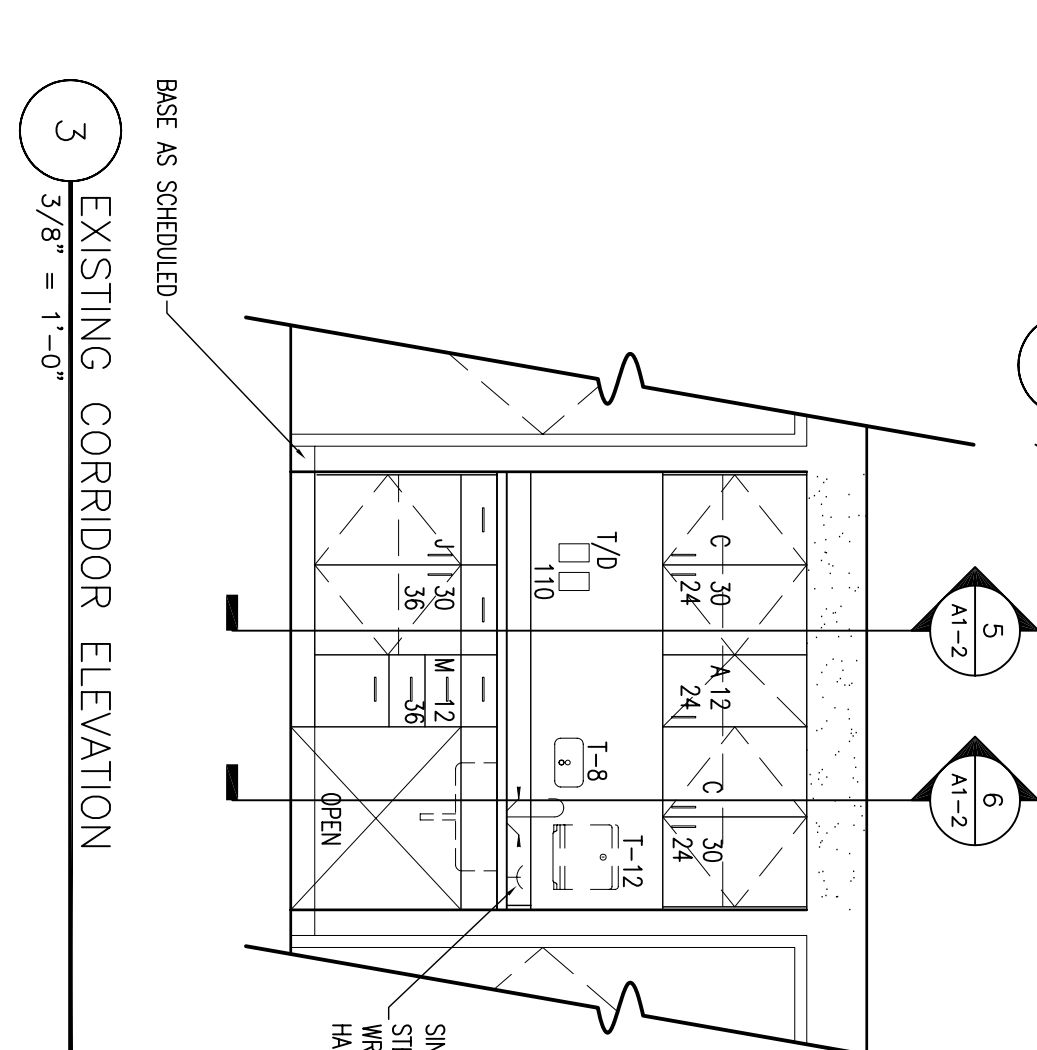
DOOR SCHEDULE

DOOR NUMBER	DOOR TYPE	MATERIAL	WIDTH	HEIGHT	FACE TYPE	FRAME		FIRE Rtg.	HARDWARE GROUP	REMARKS
						MATERIAL	DETAIL			
121	A	WD	3'-0"	7'-0"	-	1	HM	1	-	-
122	A	WD	3'-0"	7'-0"	-	1	HM	1	2	-



ROOM FINISH SCHEDULE

RM. NO.	ROOM NAME	FLOOR	BASE	NORTH WALL		SOUTH WALL		WEST WALL		EAST WALL		CEILING	CEILING
				MATERIAL	FINISH	MATERIAL	FINISH	MATERIAL	FINISH	MATERIAL	FINISH		
101	EX. CORRIDOR	EX.	EX.	EX.	EX.	EX.	EX.	EX.	EX.	EX.	EX.	EX.	EX.
102	EX. CORRIDOR	EX.	EX.	EX.	EX.	EX.	EX.	EX.	EX.	EX.	EX.	EX.	EX.
103	EX. OBSERVING	EX.	EX.	EX.	EX.	EX.	EX.	EX.	EX.	EX.	EX.	EX.	EX.
104	MINOR PROCEDURE #2	SV	SV	OMB/EX	P	OMB/EX	P	EX.	P	EX.	P	EX.	EX.
105	EX. CORRIDOR	EX.	EX.	EX.	EX.	EX.	EX.	EX.	EX.	EX.	EX.	EX.	EX.
105A	ACCOM.	EX.	EX.	EX.	EX.	EX.	EX.	EX.	EX.	EX.	EX.	EX.	EX.
106	MINOR PROCEDURE #1	EX.	EX.	EX.	EX.	EX.	EX.	EX.	EX.	EX.	EX.	EX.	EX.
107	EXISTING TOILET	EX.	EX.	EX.	EX.	EX.	EX.	EX.	EX.	EX.	EX.	EX.	EX.
108	EX. PANTRY ALCOVE	EX.	EX.	EX.	EX.	EX.	EX.	EX.	EX.	EX.	EX.	EX.	EX.
109	PRE-OP HOLDING	SV	SV	OMB/EX	P	OMB/EX	P	EX.	P	EX.	EX.	EX.	EX.
110	PRE-OP HOLDING	SV	SV	OMB/EX	P	OMB/EX	P	EX.	P	EX.	EX.	EX.	EX.
111	PRE-OP HOLDING	SV	SV	OMB/EX	P	OMB/EX	P	EX.	P	EX.	EX.	EX.	EX.
112	EX. PASSAGE	EX.	EX.	EX.	EX.	EX.	EX.	EX.	EX.	EX.	EX.	EX.	EX.
113	EX. NURSES STATION	EX.	EX.	EX.	EX.	EX.	EX.	EX.	EX.	EX.	EX.	EX.	EX.
114	EX. RECEPTION	EX.	EX.	EX.	EX.	EX.	EX.	EX.	EX.	EX.	EX.	EX.	EX.
115	CONSULT ROOM	EX.	EX.	EX.	EX.	EX.	EX.	EX.	EX.	EX.	EX.	EX.	EX.
116	EX. CONSULT ROOM	EX.	EX.	EX.	EX.	EX.	EX.	EX.	EX.	EX.	EX.	EX.	EX.
117	EX. TOILET	EX.	EX.	EX.	EX.	EX.	EX.	EX.	EX.	EX.	EX.	EX.	EX.
118	EX. TOILET	EX.	EX.	EX.	EX.	EX.	EX.	EX.	EX.	EX.	EX.	EX.	EX.
119	EX. WAITING	EX.	EX.	EX.	EX.	EX.	EX.	EX.	EX.	EX.	EX.	EX.	EX.
121	ADMITTING	EX.	EX.	EX.	EX.	EX.	EX.	EX.	EX.	EX.	EX.	EX.	EX.
122	EX. CHAIRS'S AREA	EX.	EX.	EX.	EX.	EX.	EX.	EX.	EX.	EX.	EX.	EX.	EX.



FOR PERMITTING & CONSTRUCTION: 07/20/05

Revision: 01

Revision	Date	No

Maine Medical Center
Portland, Maine

SYMBOL	SIZE	CFM	P. D.	MAX. VEL.	MAKE & MODEL
A	5" x 7"	125 - 250			TRASKI DAWGDOG W/1 KOW WMC
B	8" x 7"	225 - 450			TRASKI DAWGDOG W/1 KOW WMC

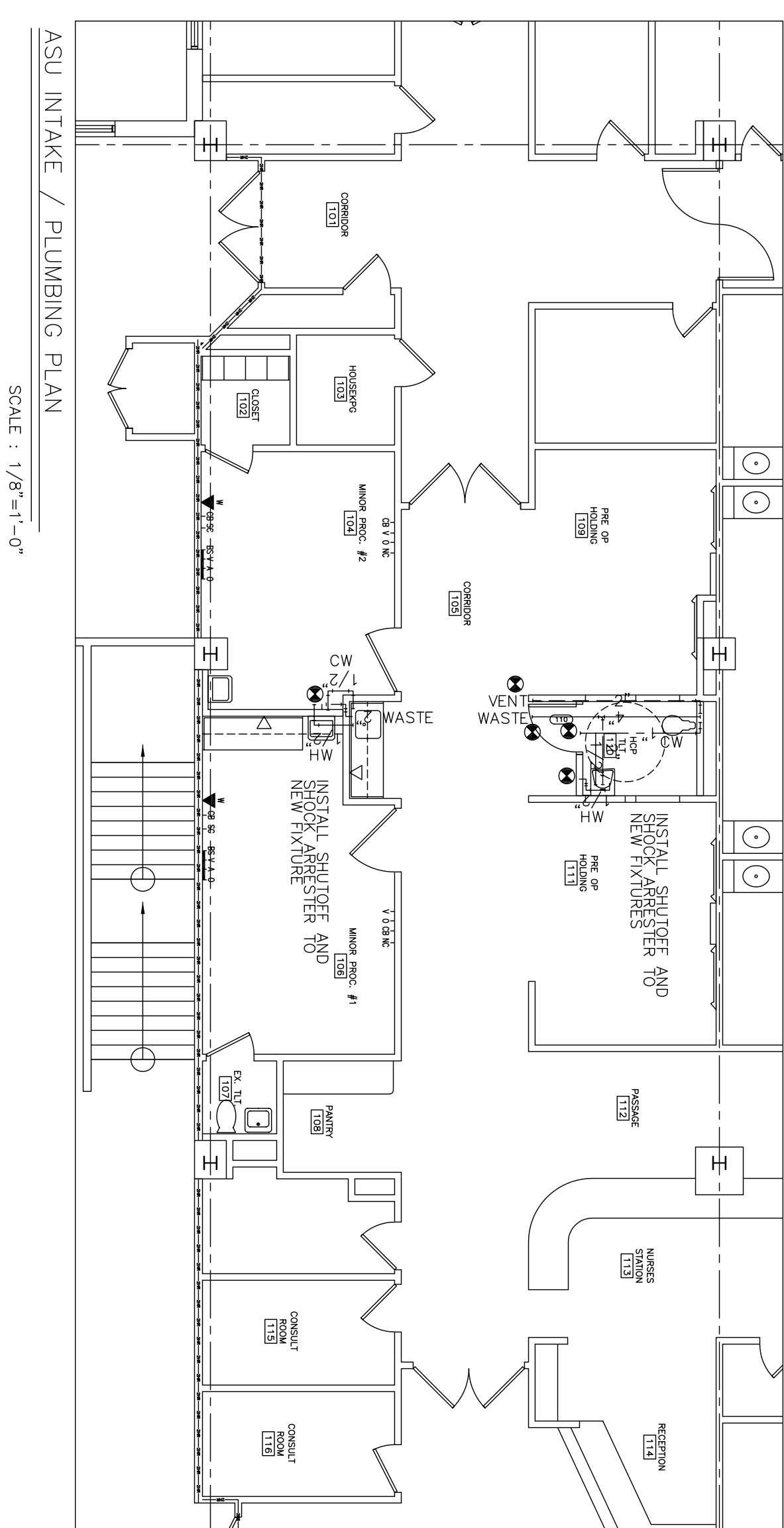
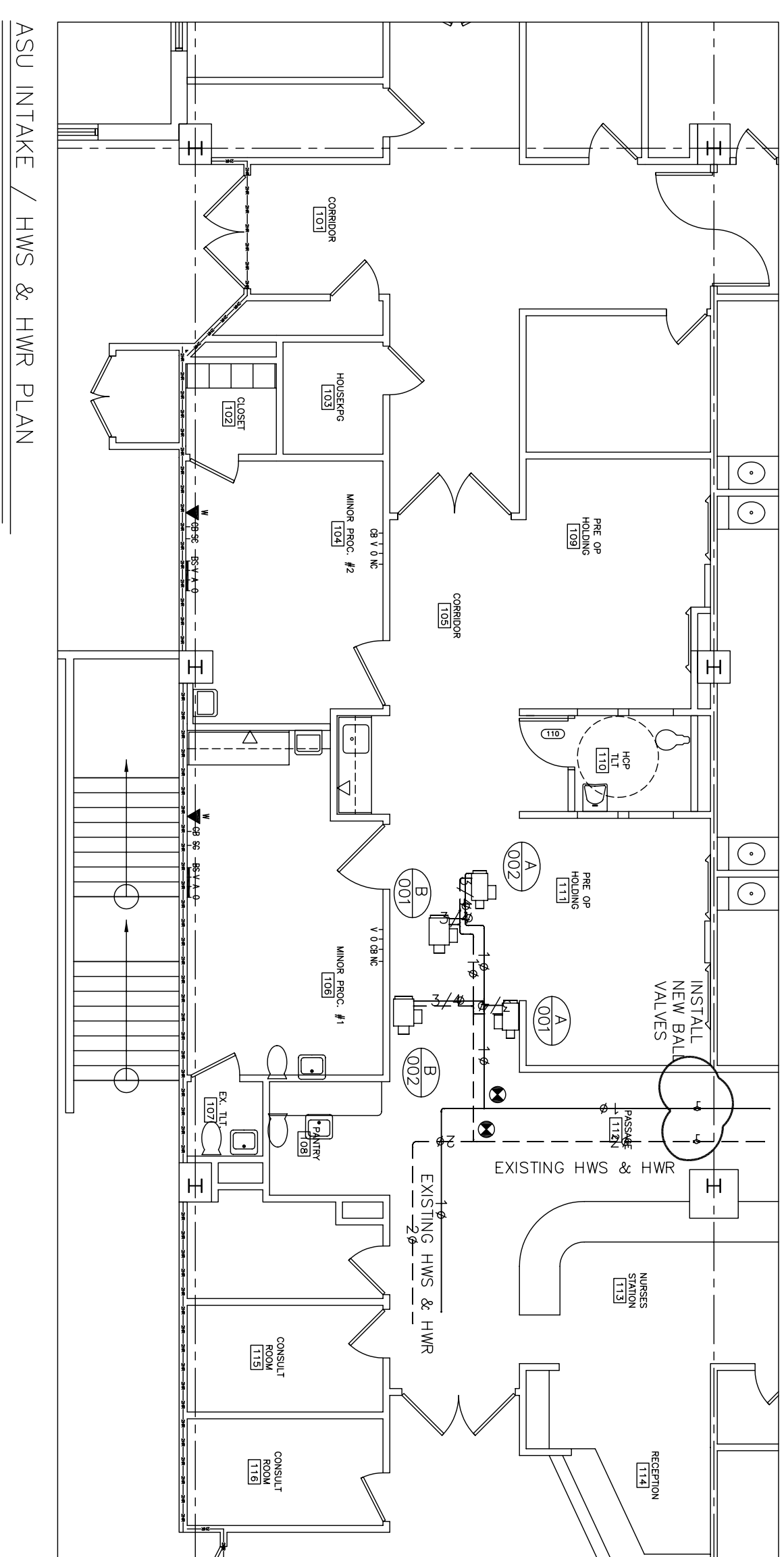
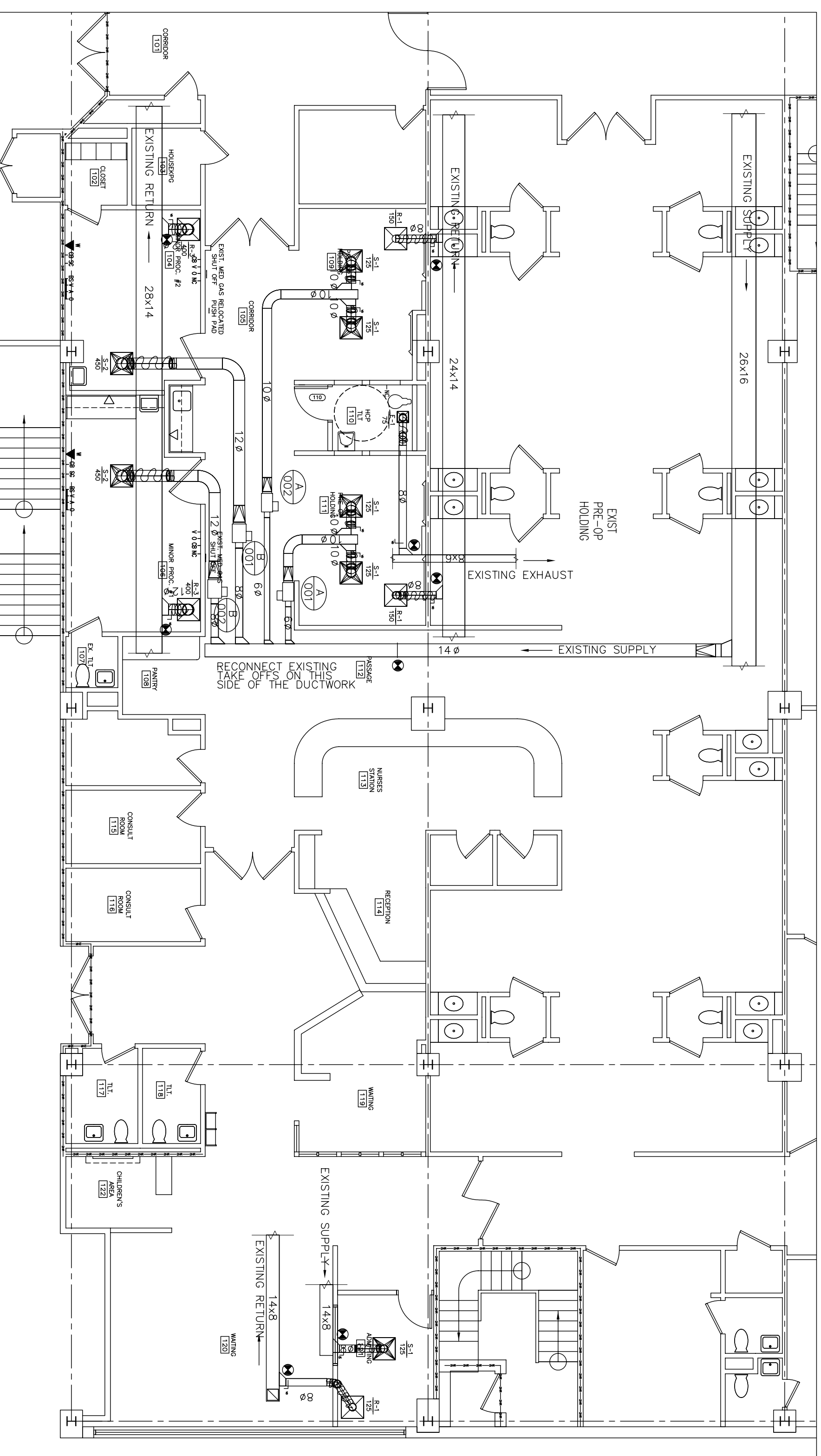
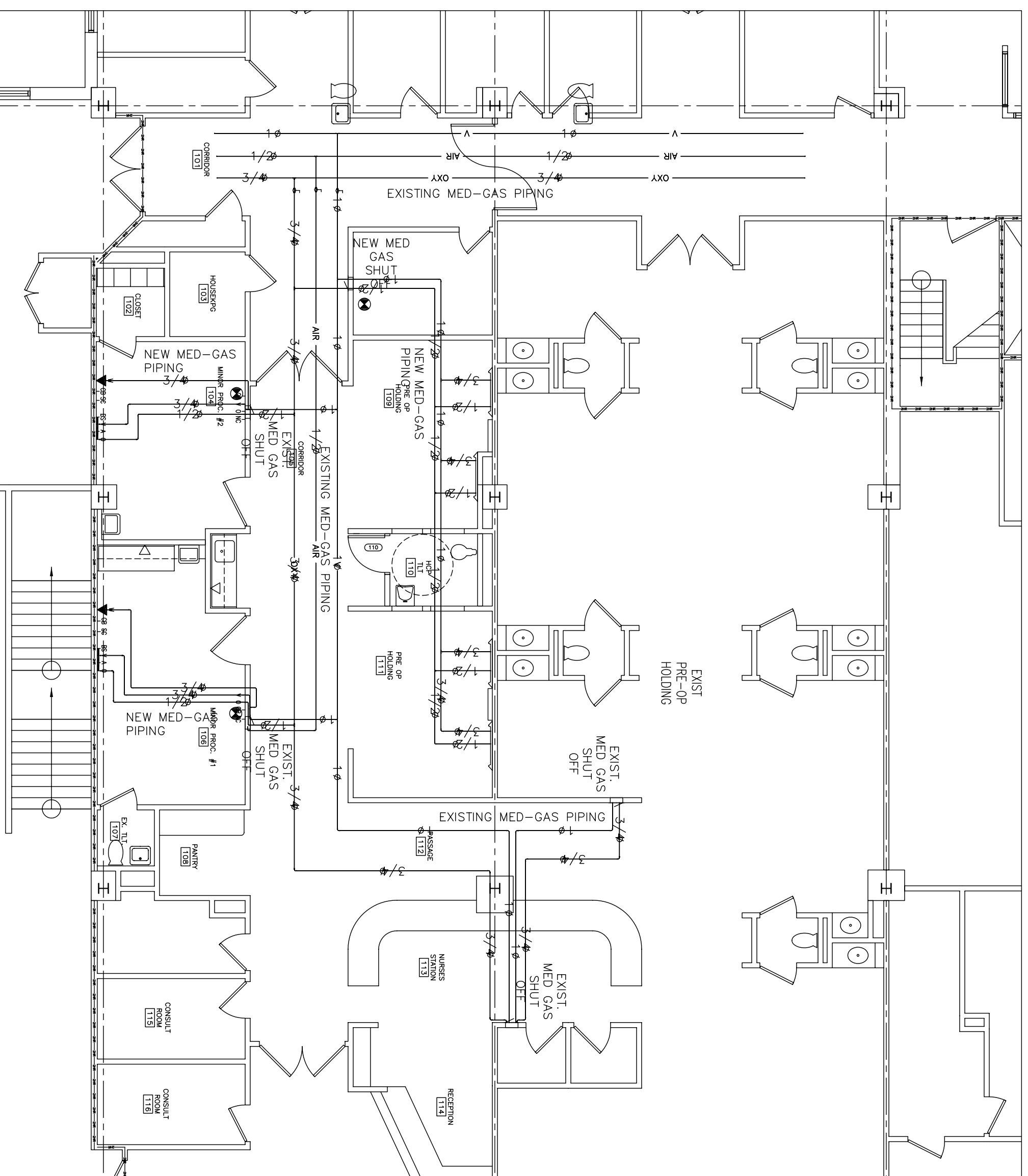
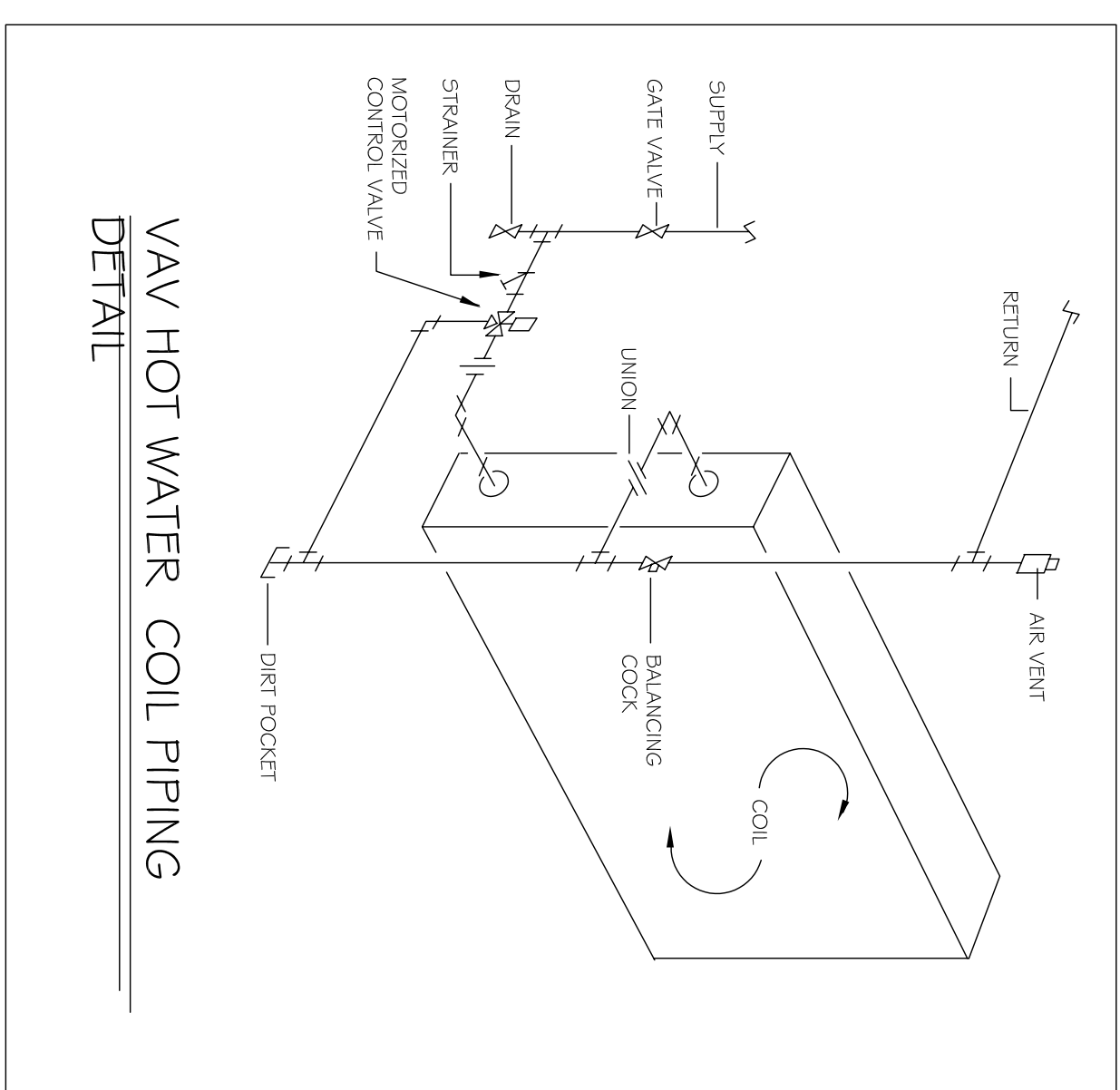
VAV ZONE DAMPERS

D/FUSERS ~ GRILLES ~ REGISTERS

SIZE CODE	MFR & MODEL #	SIZE	CFM	NC	PD	THROW/CONN.	REMARKS
S-1	TRASKI DAWG	24"x24"	125-150	<80	0.03	8' x 4'	10" DIA.
S-2	TRASKI DAWG	24"x24"	450	<80	0.03	5'1.3'	12" DIA.
R-1	TRASKI DAWG	24"x24"	125-150	<80	0.03	8' DIA.	
R-2	TRASKI DAWG	24"x24"	325	<80	0.03	8' DIA.	
R-3	TRASKI DAWG	24"x24"	450	<80	0.03	8' DIA.	
E-1	TRASKI DAWG	12"x12"	75	<80	0.03	8' DIA.	

PLUMBING FIXTURES SCHEDULE

TAG	FIXTURE TYPE	HOT	COLD	SANITARY	VENT	MANUFACTURER & MODEL
F-1	WATER FLOOR WALL SINK	-	-	1"	2"	KOHLER, K-4530 VORBORN #111 FURN VALVE # ROUND 1555C 2011
F-2	LAVATORY WALL SINK	-	-	1 1/2"	2"	KOHLER, K-4532
F-3	FLOOR LAVATORY	-	-	1 1/2"	2"	CHICAGO VALVE CO. 002-V317
F-4	SINK, PROP. N.	-	-	1 1/2"	2"	TRASKI, TR-1522-3
F-5	FLOOR SINK	-	-	1 1/2"	2"	CHICAGO VALVE CO. 706-SW25X



SHEET #
M-1
OF 1

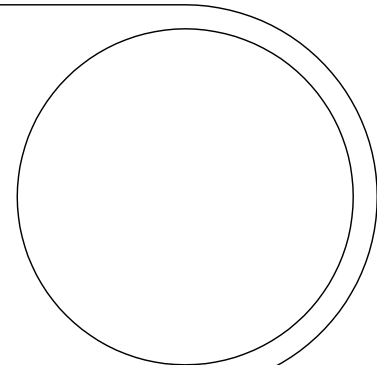
PROJECT:
MAINE MEDICAL
CENTER
PORTLAND, MAINE

DRAWN: BSJ
CHECKED: DJF
DRAWINGS THIS SHEET:
SCALE: 1/8"=1'-0"
DATE: 4-27-05
PROJECT#: 03168 - MMC

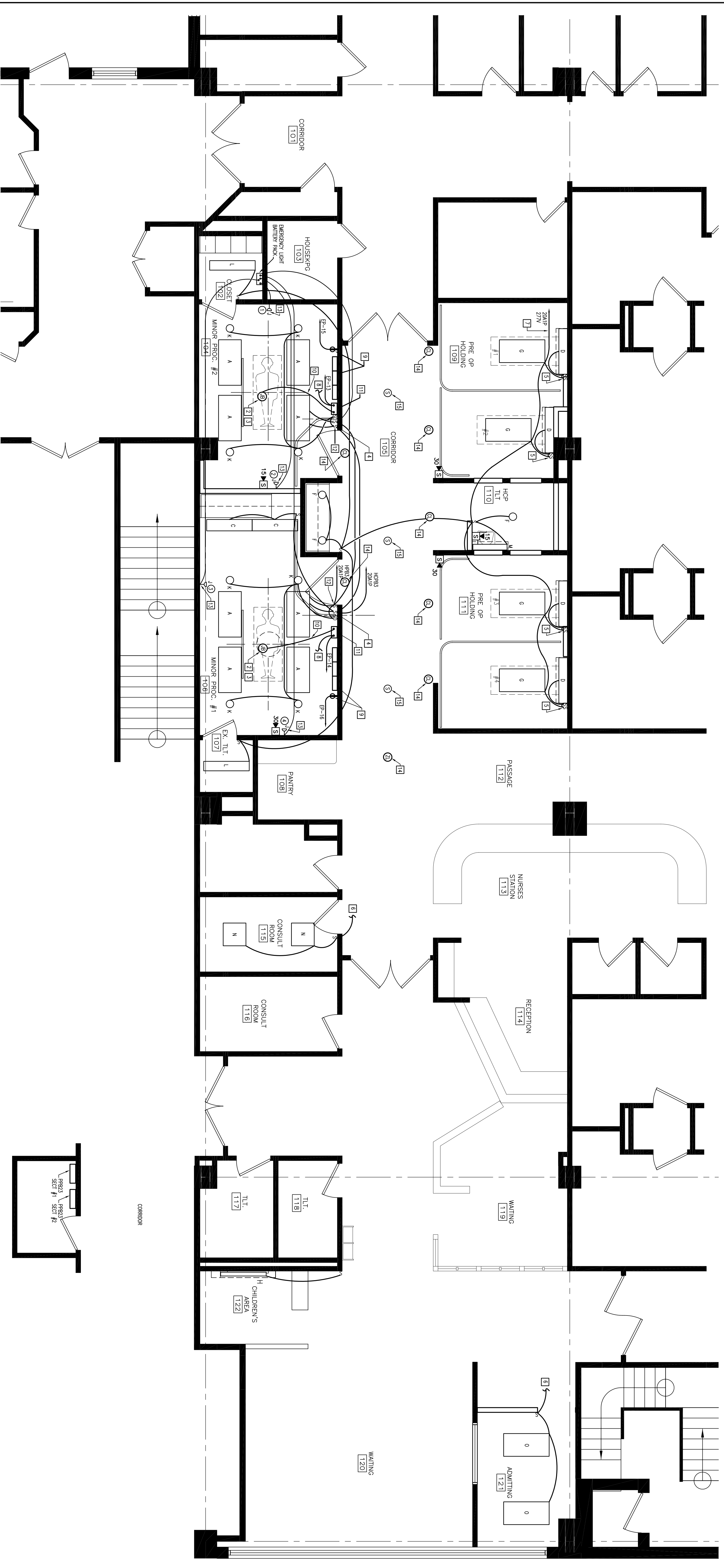
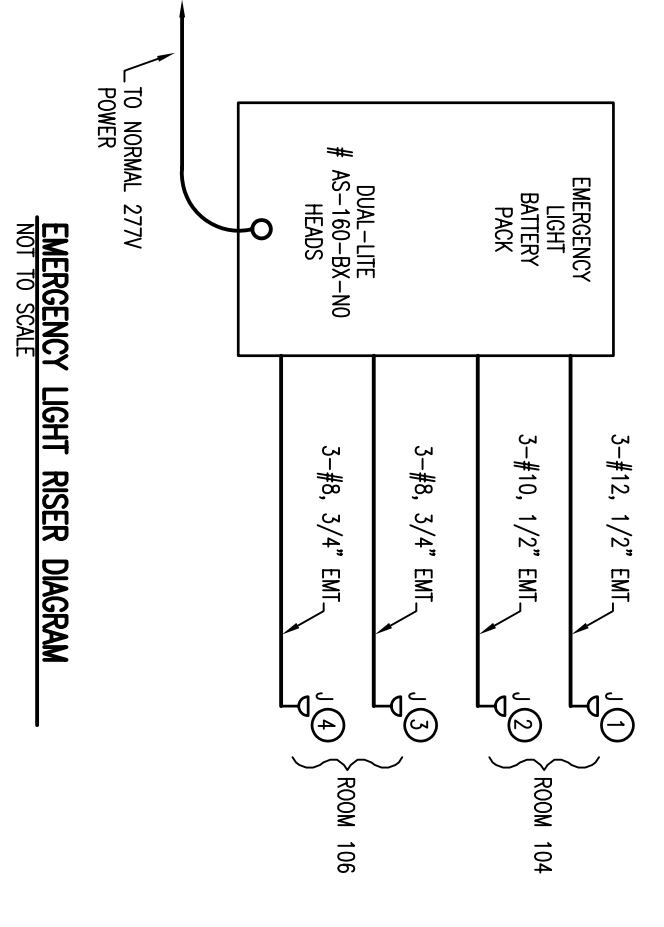
ASU INTAKE
MECHANICAL REVISION
PLANS

ISSUE:
REVIEW SET

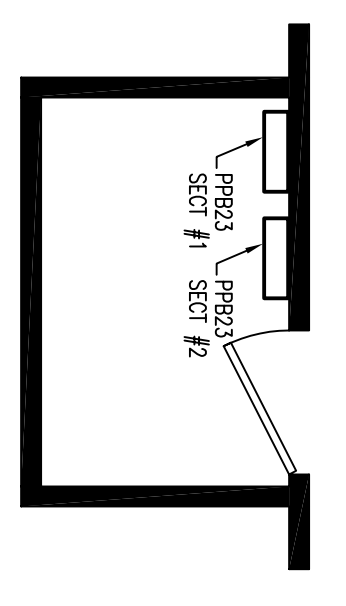
JOHNSON & JORDAN
MECHANICAL CONTRACTORS
18 MUSSEY ROAD
SCARBOROUGH, MAINE 04074
TEL (207) 883-8345 • FAX (207) 883-8619



- CONSTRUCTION NOTES**
- 1 THE "N" LUMBER IS TO BE MOUNTED SO THAT BOTTOM SIDE OF CHANNEL IS AT 8" ABOVE FINISHED FLOOR
 - 2 VERIFY WITH SURGEON LIGHT SHOP MAKING CORRECT RECEIPTS TO PROVIDE IN THIS JUNCTION BOX
 - 3 VERIFY CORRECT JUNCTION BOX SIZE AND LOCATION WITH SURGEON LIGHT SHOP
 - 4 VERIFY CORRECT JUNCTION BOX SIZE AND LOCATION WITH ELECTRICAL CONSULTANT. BALANCE CONDUITING CAPACITIES TWO WAYS AND THE OTHER LIGHT SWITCH TO THE BALLAST CONTROLLING THE FREEMETER TWO LUMBS, WAVEFUNCTION.
 - 5 PROVIDE A THREE GANG LOW VOLTAGE SWITCH AT THE LOCATION SHOWN AND PROVIDE LOW VOLTAGE CONTROLLER WAVEFUNCTION.
 - 6 PROVIDE POWER TO THIS ROOM'S LIGHTS FROM THE EXISTING LIGHT CIRCUIT.
 - 7 PROVIDE 277 VOLT POWER TO HIS 170W WATT LIGHTING FROM THE EXISTING LIGHTING CIRCUIT SERVING THE ROOM.
 - 8 COMPLETE BRANCH CIRCUIT TO SURGEON TABLE BROP ROOM. SEE SHEET E-2.
 - 9 PROVIDE POWER TO RECEPTION AT 8" AFF FIRE RACKER. VERIFY POWER CONNECTION LOCATION WITH SHOP MAKING RECEIPTS TO PROVIDE IN THIS JUNCTION BOX.
 - 10 PROVIDE 1/2" DIA RIGID CONDUIT THE SURGEON LIGHT WAVEFUNCTION INTENSITY CONTROL AND THE JUNCTION BOXES AT THE CEILING FOR EACH THE LIGHT.
 - 11 VERIFY WHETHER THE SURGEON LIGHT WAVEFUNCTION INTENSITY CONTROL INCLUDES A SURGEON LIGHT WAVEFUNCTION CONNECTIONS OF POWER TO LIGHT CONTROLLER. POWER TO LIGHT FROM CONTROLLER AND ROOMS.
 - 12 THESE TWO LIGHT SWITCHES ARE TO BE INSTALLED IN "L" SHAPED JUNCTION BOXES. VERIFY THE LOCATION OF THE LIGHT SWITCHES WITH SURGEON LIGHT WAVEFUNCTION. VERIFY POWER CONNECTIONS IN EXISTING JUNCTION BOXES WITH WAVEFUNCTION.
 - 13 PROVIDE REARFACE COVERED EMERGENCY LIGHTS AT 8" ABOVE FINISHED FLOOR WHERE SHOWN.
 - 14 PROVIDE WAVE AND OUTLET BOX IN ACCORDANCE WITH IBC SPEC. SECTION 1600.
 - 15 PROVIDE CEILING GRID MOUNTED REARFACE SPEAKERS IN ACCORDANCE WITH IBC SPEC. SECTION 1600.



LIGHTING AND FIRE ALARM PLAN
SCALE: 1/4" = 1'-0"



Revision	Date	No

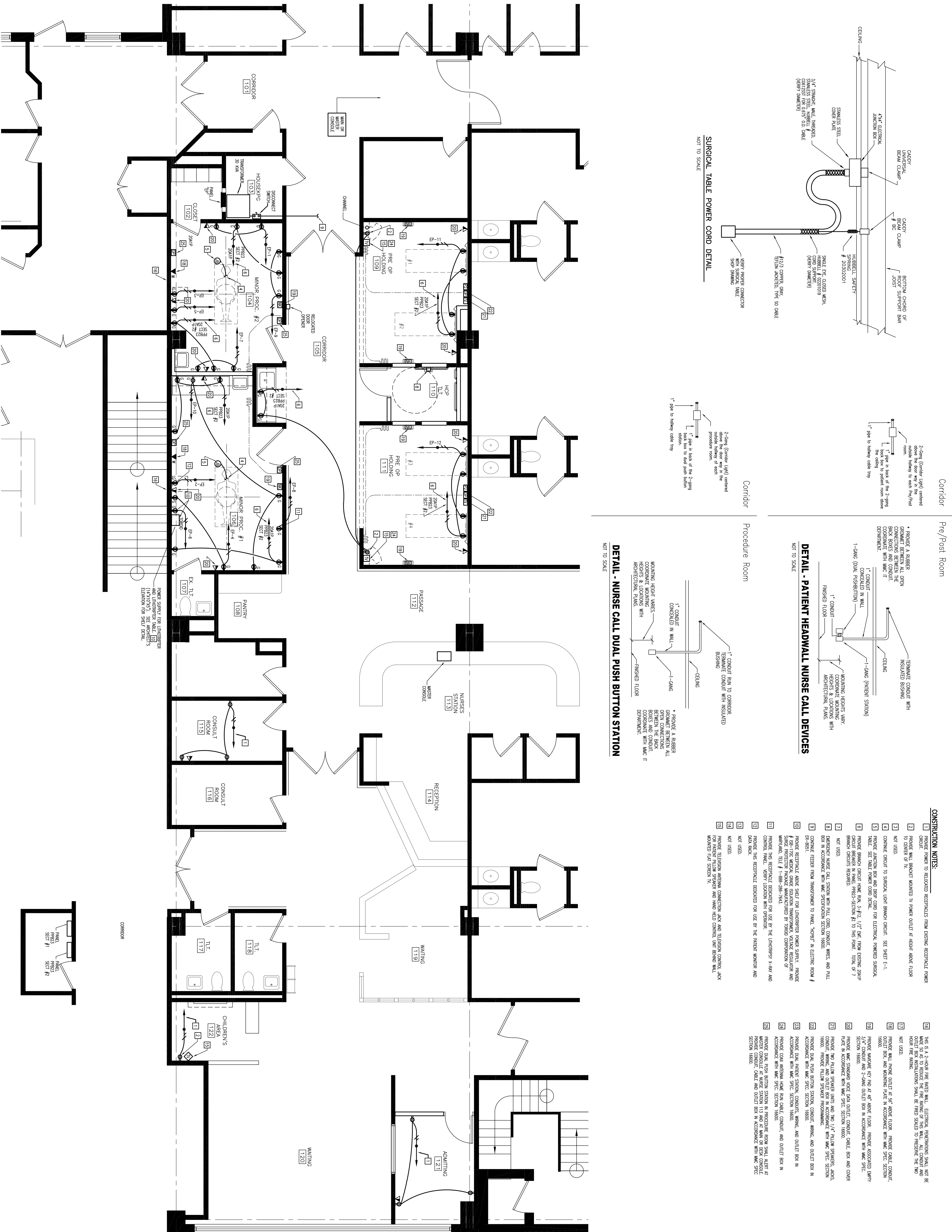


Ambulatory Surgery Unit
Renovation

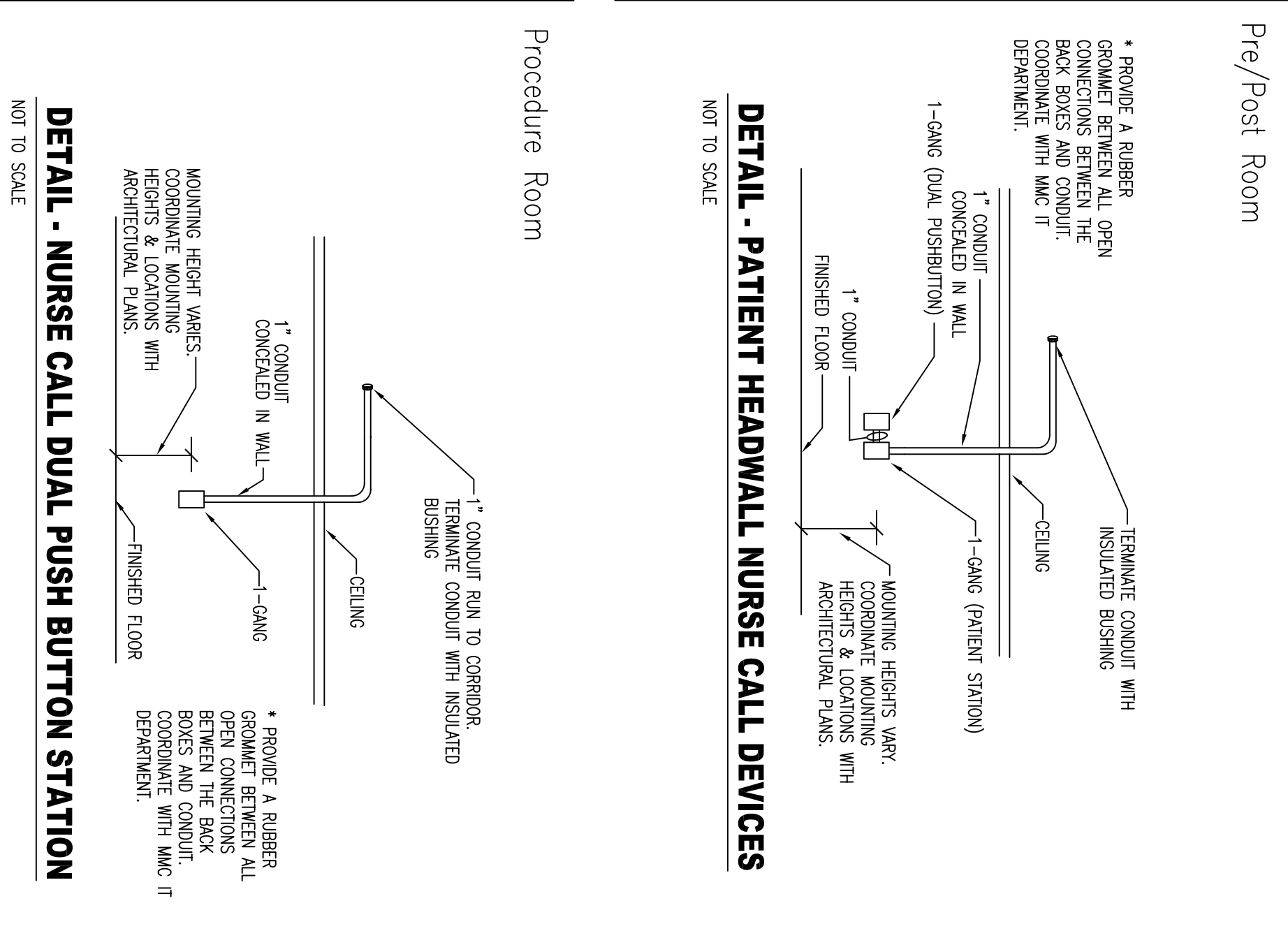
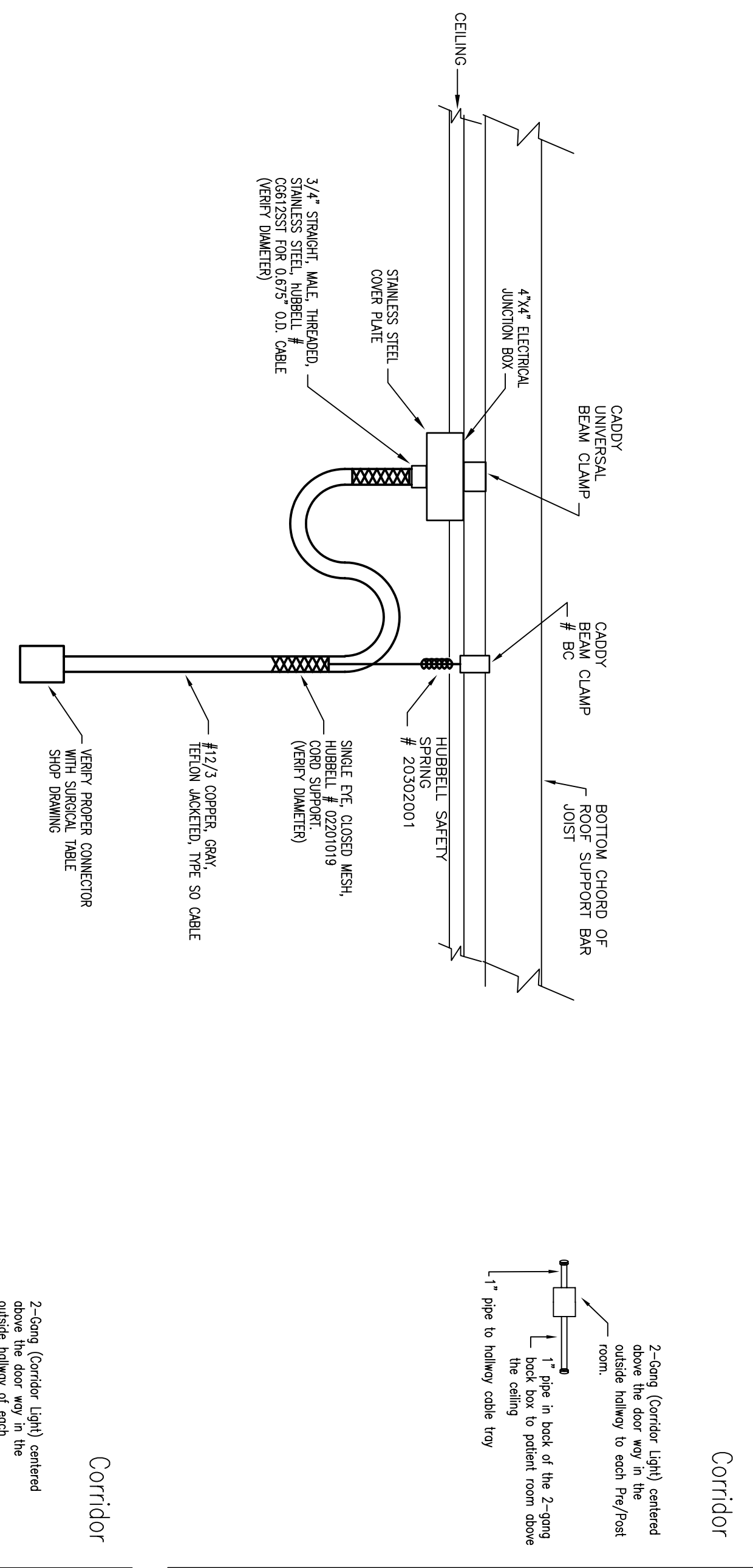
25614
MorrisSwitzer Project Number
Date: 4-25-05
Scale
Sheet Title and Number

17-APRIL-05
AS NOTED

LIGHTING AND
FIRE ALARM PLAN



SURGICAL TABLE POWER CORD DETAIL
NOT TO SCALE



- CONSTRUCTION NOTES:**
- 1 PROVIDE POWER TO RELOCATED RECEPTACLES FROM EXISTING RECEPTION POWER CIRCUIT.
 - 2 PROVIDE WALL BRACKET MOUNTED TV POWER OUTLET AT RIGHT ABOVE FLOOR CENTER OF TV.
 - 3 NOT USED.
 - 4 PROVIDE JUNCTION BOX AND DROP CORD FOR ELECTRICAL POWERED SURGICAL TABLE. SET TABLE POWER CORD DETAIL.
 - 5 PROVIDE BRACKET MOUNTED POWER OUTLET IN ELECTRIC ROOM. TOTAL OF 7 BRACKET CIRCUITS REQUIRED.
 - 6 NOT USED.
 - 7 DEMONSTRATE NURSE CALL STATION WITH FULL CORD, CONDUIT, WELLS, AND PULL BOX IN ACCORDANCE WITH MHC SPECIFICATION SECTION 1600.
 - 8 PROVIDE RECEPTACLE SHEET FOR UNDERGRASS POWER SPARKY. PROVIDE SHEET PROTECTION PACKAGE MANUFACTURED BY TROBID CORPORATION OF WASHINGTON, TITLE # 1-889-285-7443.
 - 9 PROVIDE THE RECEPTACLE LOCATED FOR USE BY THE LITHOGRAPHY X-RAY AND CONTROL PANEL. VERIFY LOCATION WITH OWNER.
 - 10 PROVIDE THE RECEPTACLE DEDICATED FOR USE BY THE PATIENT MONITOR AND NOT USED.
 - 11 PROVIDE TELEPHONE ANTENNA CONNECTION JACK AND TELEVISION CONTROL JACK MOUNTED AT HEIGHT OF SCREEN TV.
 - 12 THIS IS A 2-HOUR FIRE RATED WALL. ELECTRICAL PENETRATIONS SHALL NOT BE MADE TO AS TO REDUCE THE FIRE RATING OF THIS WALL. ALL CONDUIT AND HOLES FOR THE TABLE SHALL BE 1/2" OVER SIZED TO PENETRATE THE WALL. NOT USED.
 - 13 PROVIDE WALL POWER OUTLET AT 48" ABOVE FLOOR. PROVIDE CASE, CONDUIT, OUTLET BOX, AND WAITING PLATE IN ACCORDANCE WITH MHC SPEC. SECTION 1600.
 - 14 PROVIDE WALLPOWER BY AND IN 48" ABOVE FLOOR. PROVIDE ASSOCIATED EMERY SPLIT CONDUIT AND 2-GANG OUTLET BOX IN ACCORDANCE WITH MHC SPEC. PROVIDE WALL CHASING, HOPE PULL OUTLET CONDUIT, CONDUIT, BOX AND COVER FACE IN ACCORDANCE WITH MHC SPEC. SECTION 1600.
 - 15 PROVIDE TWO FLOW SPENDER UNITS AND TWO 1/4" FLOW SPENDERS, JUNCTION, WIRING, AND OUTLET BOX IN ACCORDANCE WITH MHC SPEC. SECTION 1600. PROVIDE FLOW SPENDER PROGRAMMING.
 - 16 PROVIDE DUAL PUSH BUTTON STATION, CONDUIT, WIRING, AND OUTLET BOX IN ACCORDANCE WITH MHC SPEC. SECTION 1600.
 - 17 PROVIDE DUAL ANTENNA STATION, CONDUIT, WIRING, AND OUTLET BOX IN ACCORDANCE WITH MHC SPEC. SECTION 1600.
 - 18 PROVIDE CONDUIT ANTENNA HOPE PULL OUTLET CONDUIT, CONDUIT, AND OUTLET BOX IN ACCORDANCE WITH MHC SPEC. SECTION 1600.
 - 19 PROVIDE DUAL PUSH BUTTON STATION IN PROCEDURE ROOM SHALL, ALERT AT WATER CONTROL AT NURSE STATION 113 AND AT MAIN OF DESK CONTROL. SECTION 1600. CABLE AND OUTLET BOX IN ACCORDANCE WITH MHC SPEC. SECTION 1600.

POWER DISTRIBUTION PLAN
SCALE: 1/4" = 1'-0"

