

BACKGROUND AND SCOPE

1. PROJECT DESCRIPTION: 27 BOYNTON STREET IS AN EXISTING 3-UNIT APARTMENT BUILDING THAT WAS DAMAGE BY FIRE IN 2004.

2. SCOPE OF WORK: REPAIRS CONSIST OF NEW EXTERIOR SIDING, NEW WINDOWS, NEW INTERIOR FINISHES, PLUMBING AND ELECTRICAL WORK

3. SCOPE OF THESE WORKING DRAWINGS: THIS PARTIAL SET OF WORKING DRAWINGS IS TO IDENTIFY FIRE AND SOUND ASSEMBLIES ONLY FOR PERMITTING PURPOSES. ALL OTHER ITEMS ARE BY CONTRACTOR.

4. INFORMATION: THIS PARTIAL SET OF WORKING DRAWINGS IS BASED ON INFORMATION PROVIDED BY THE CONTRACTOR AND SITE OBSERVATIONS AND MEASUREMENTS BY ARCHITECT MADE 9/21/04.

GENERAL NOTES

1. LIFE SAFETY: THE ASSEMBLIES IDENTIFIED ARE BASED ON ???CODE?????

2. FIRE ENCLOSURE: ALL STAIRS AND STAIRWAYS TO RECIEVE COMPLETE FIRE ENCLOSURE AS ILLUSTRATED.

3. SOUND SEPARATION: ALL WALLS SEPARATING PUBLIC STAIRS AND HALLWAYS FROM RESIDENTIAL UNITS TO BE SOUND SEPARATED.

RATING - STC 45 ??

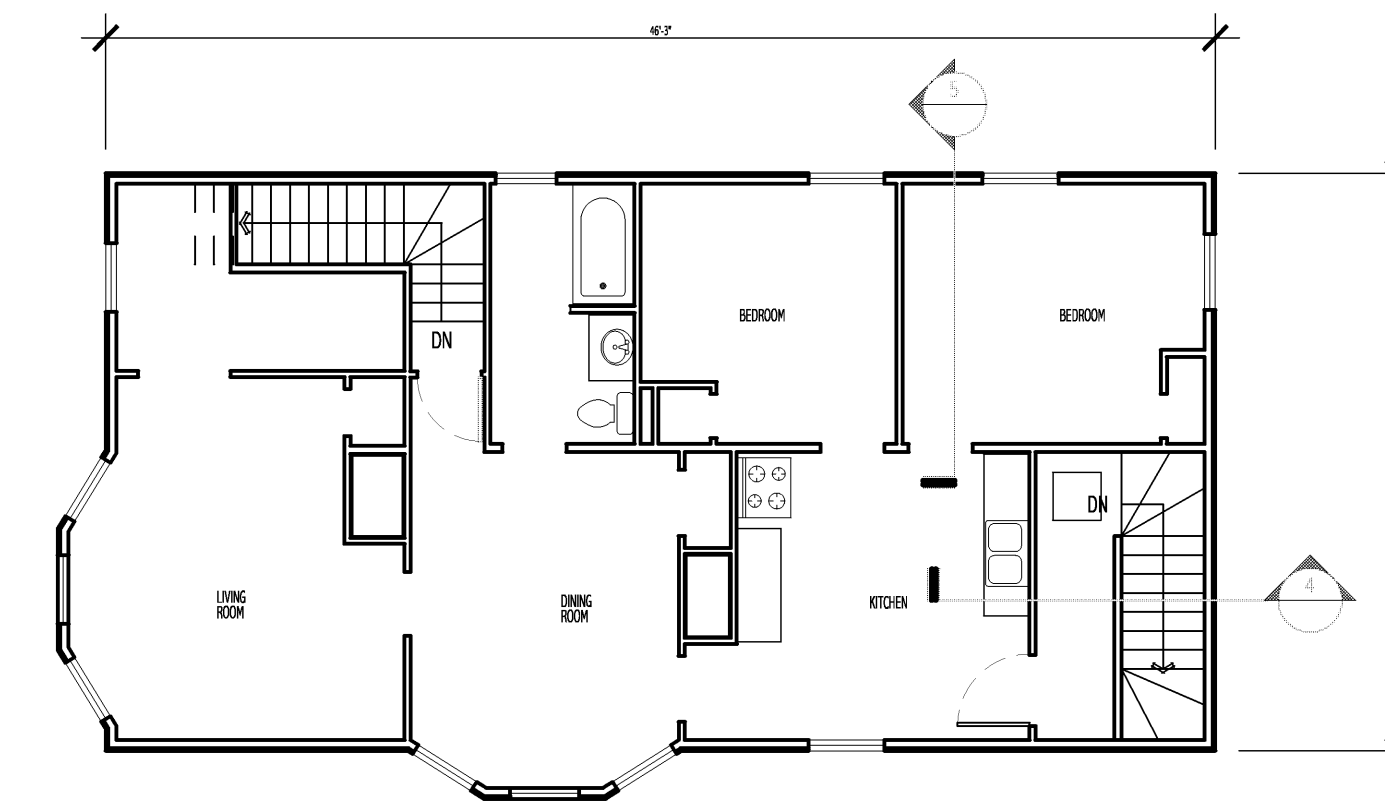
4. DOORS: ALL DOORS PENETRATING FIRE ENCLOSURE TO BE RATED MIN 90 MIN.

5. FLOOR PENETRATIONS: ALL FLOOR TO BE SEALED.

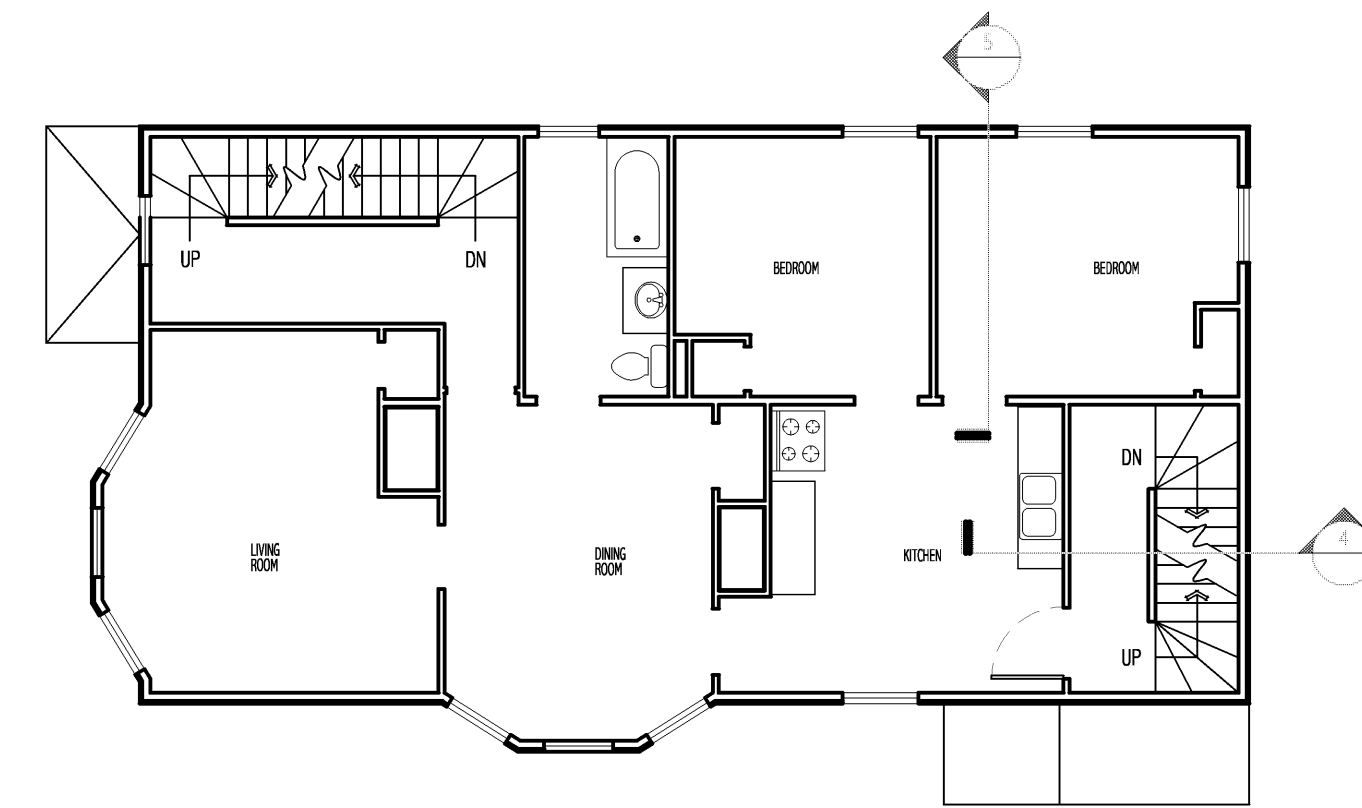
ELECTRICAL PENETRATIONS THROUGH 5/8" GWB AND FIRE CAULKED.

PLUMBING PENETRATIONS TO RECEIVE FIRE COLLARS.

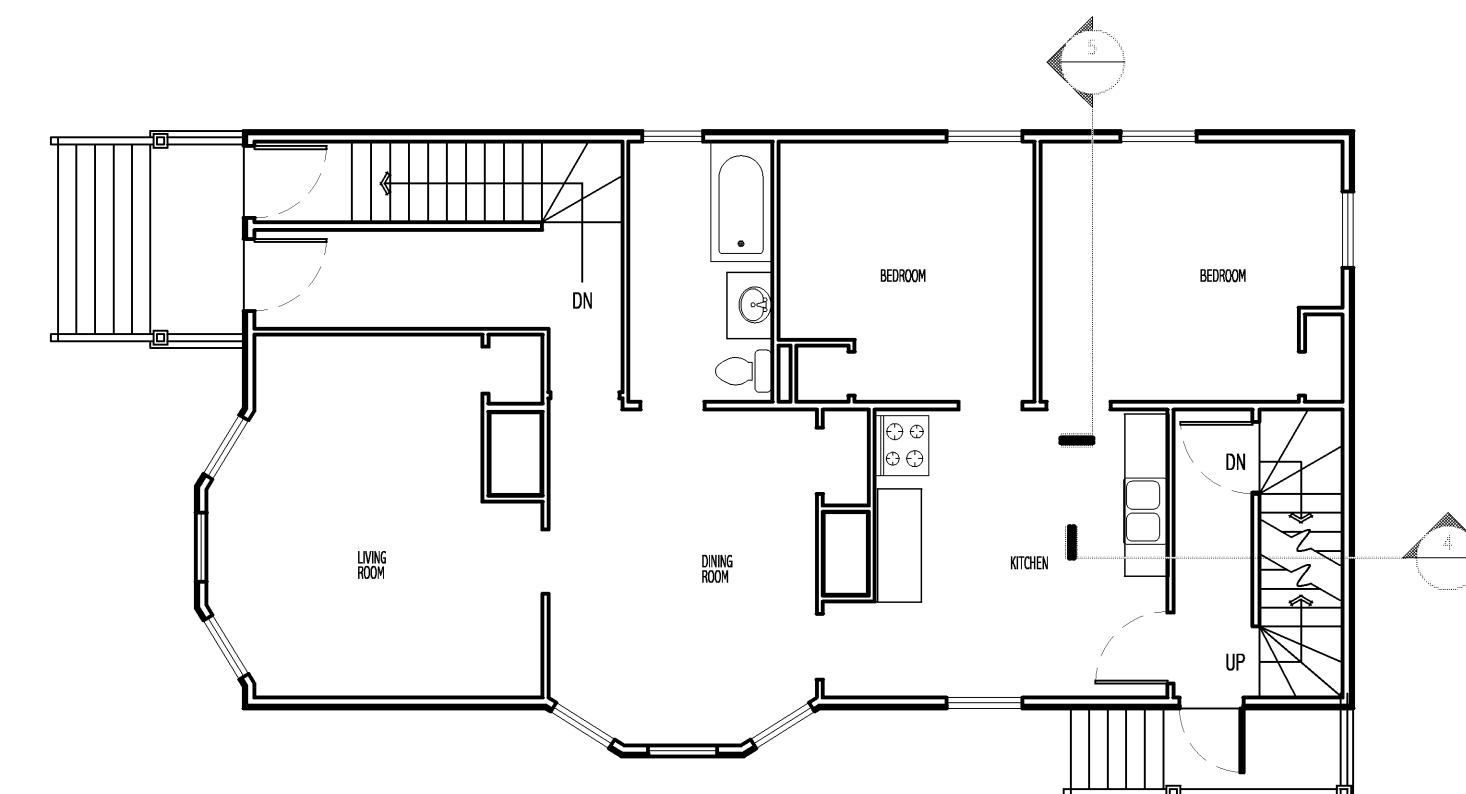
6. FIRE BLOCKING: ALL FLOORS TO RECIEVE FIRE BLOCKING FLUSH AT FLOOR LEVEL AND AT CEILING LEVEL. - SEE NOTE AT SECTION 5.



3 THIRD FLOOR PLAN - 31 BOYNTON STREET
1/8" = 1'-0"

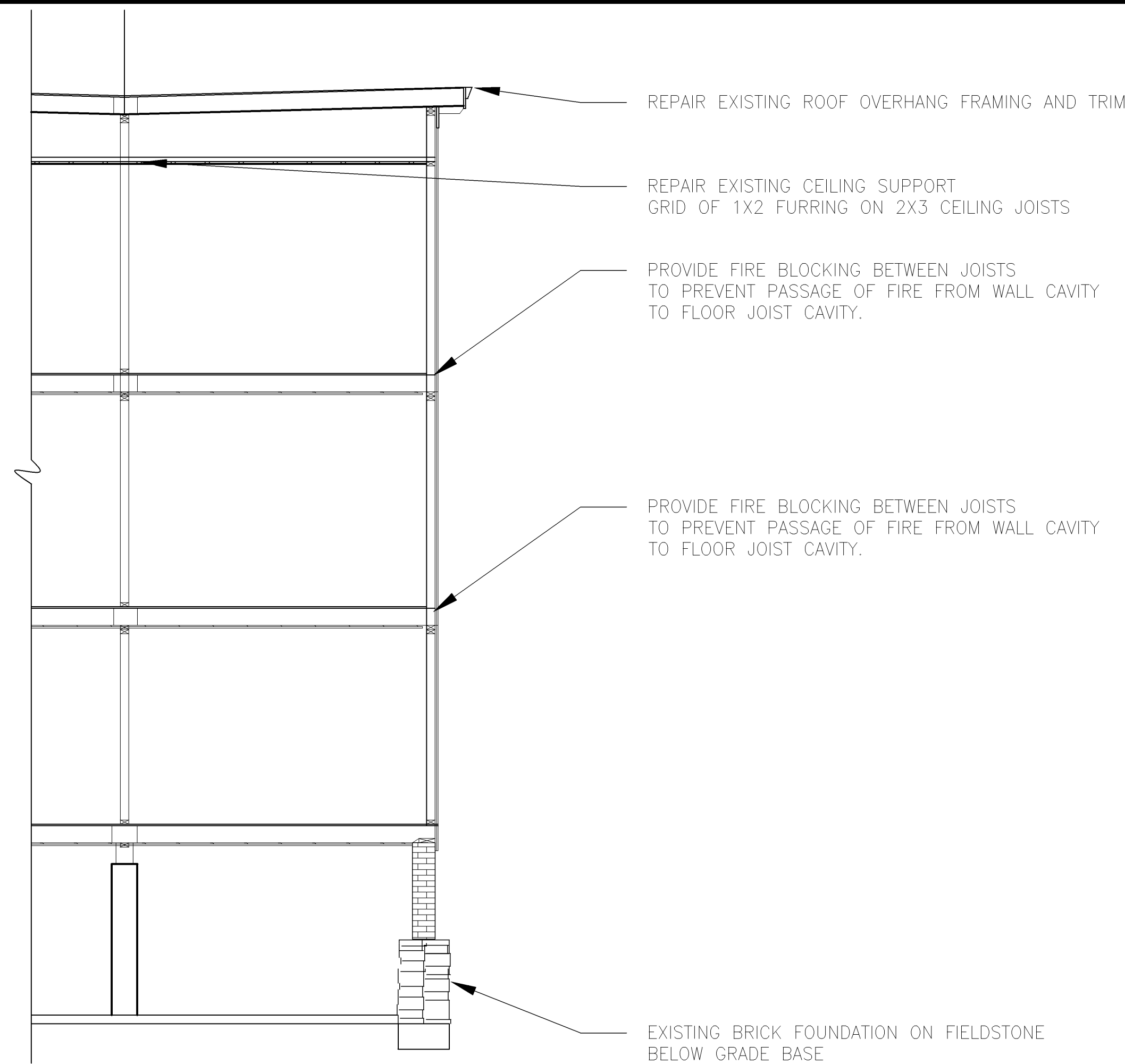


2 SECOND FLOOR PLAN - 29 BOYNTON STREET
1/8" = 1'-0"

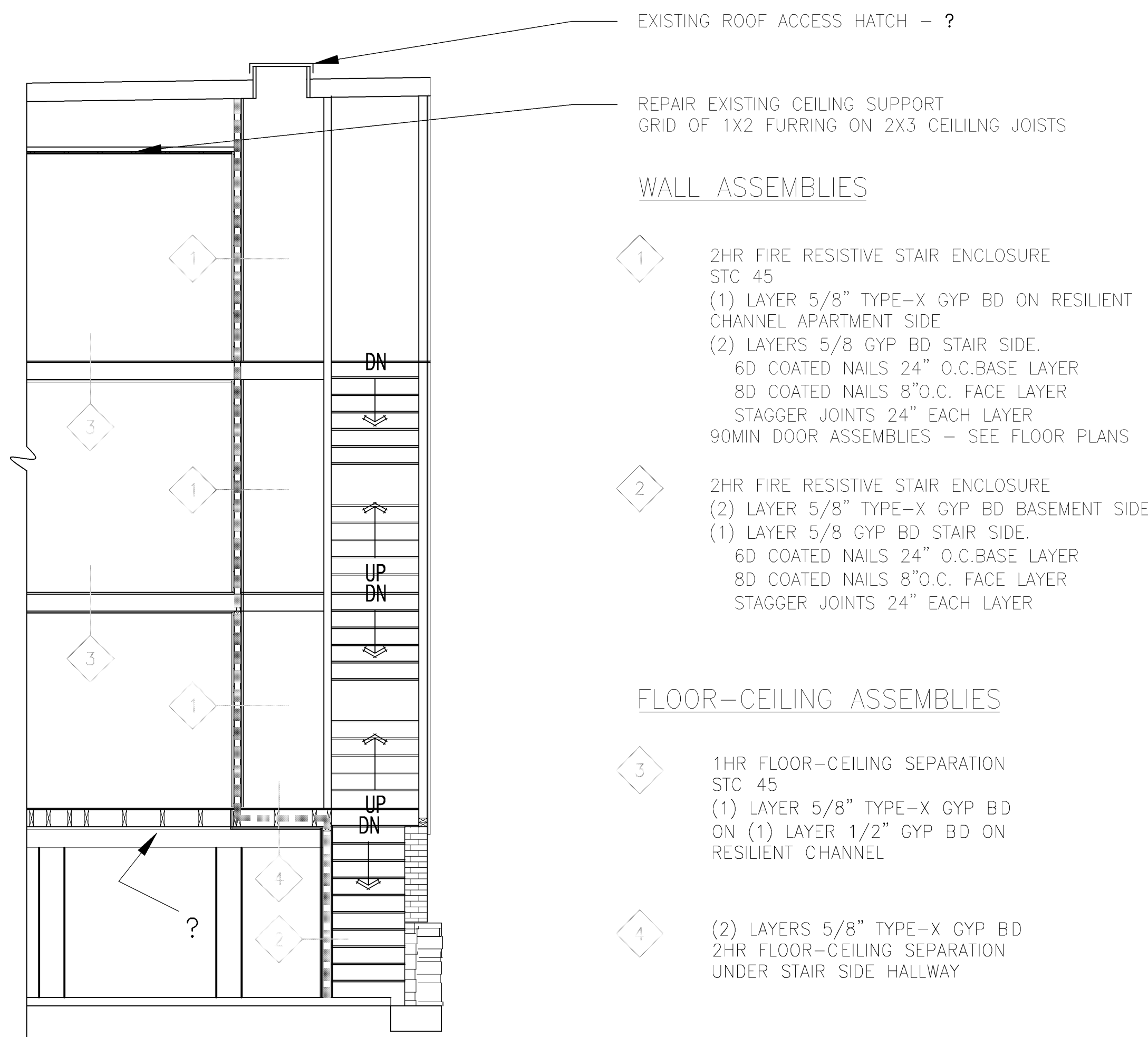


1 FIRST FLOOR PLAN - 27 BOYNTON STREET
1/8" = 1'-0"

BOYNTON STREET



5 PARTIAL TRANSVERSE BUILDING SECTION - FIRE BLOCKING REQUIREMENTS
1/4" = 1'-0"



4 SECTION AT BACK STAIR - (FRONT STAIR SIMILAR) - FIRE AND SOUND SEPARATION REQUIREMENTS
1/4" = 1'-0"

WALL ASSEMBLIES

- 1 2HR FIRE RESISTIVE STAIR ENCLOSURE
STC 45
(1) LAYER 5/8" TYPE-X GYP BD ON RESILIENT CHANNEL APARTMENT SIDE
(2) LAYERS 5/8 GYP BD STAIR SIDE.
6D COATED NAILS 24" O.C.BASE LAYER
8D COATED NAILS 8"O.C. FACE LAYER
STAGGER JOINTS 24" EACH LAYER
90MIN DOOR ASSEMBLIES - SEE FLOOR PLANS
- 2 2HR FIRE RESISTIVE STAIR ENCLOSURE
(2) LAYER 5/8" TYPE-X GYP BD BASEMENT SIDE
(1) LAYER 5/8 GYP BD STAIR SIDE.
6D COATED NAILS 24" O.C.BASE LAYER
8D COATED NAILS 8"O.C. FACE LAYER
STAGGER JOINTS 24" EACH LAYER

FLOOR-CEILING ASSEMBLIES

- 3 1HR FLOOR-CEILING SEPARATION
STC 45
(1) LAYER 5/8" TYPE-X GYP BD
ON (1) LAYER 1/2" GYP BD ON
RESILIENT CHANNEL
- 4 (2) LAYERS 5/8" TYPE-X GYP BD
2HR FLOOR-CEILING SEPARATION
UNDER STAIR SIDE HALLWAY

