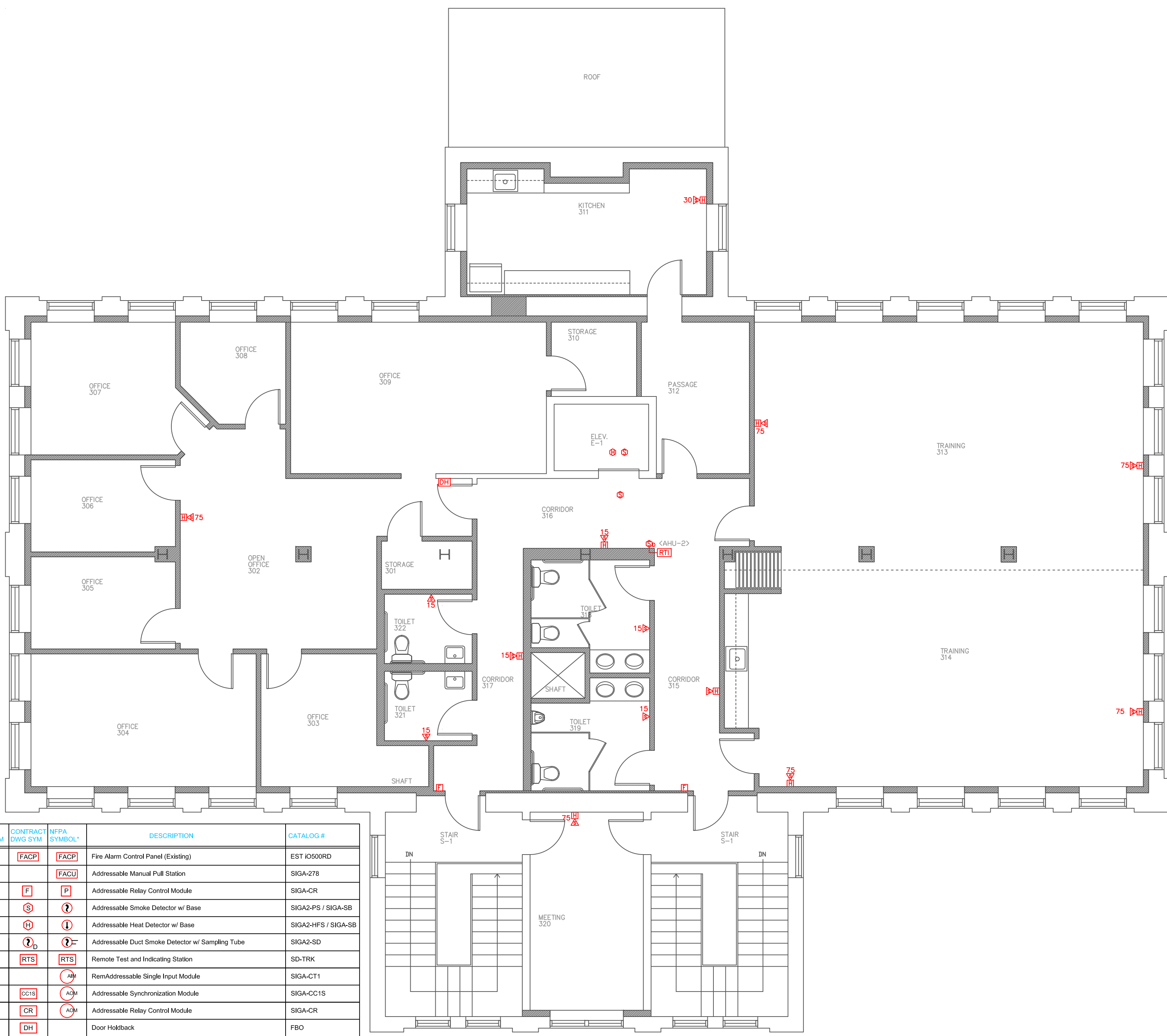


REV.	DESCRIPTION	DATE	DRWN	IRW'D
0	Original Issue	12/14		



LEGEND:

RISER DIAG SYM	CONTRACT DWG SYM	NFPA SYMBOL*	DESCRIPTION	CATALOG #
[FACP]	[FACP]	[FACP]	Fire Alarm Control Panel (Existing)	EST i0500RD
[BPS]		[FACU]	Addressable Manual Pull Station	SIGA-278
[F]	[F]	[P]	Addressable Relay Control Module	SIGA-CR
[S]	[S]	[S]	Addressable Smoke Detector w/ Base	SIGA2-PS / SIGA-SB
[H]	[H]	[H]	Addressable Heat Detector w/ Base	SIGA2-HFS / SIGA-SB
[D]	[D]	[D]	Addressable Duct Smoke Detector w/ Sampling Tube	SIGA2-SD
[RTS]	[RTS]	[RTS]	Remote Test and Indicating Station	SD-TRK
[CT1]		[AM]	RemAddressable Single Input Module	SIGA-CT1
[CC1S]	[CC1S]	[ACM]	Addressable Synchronization Module	SIGA-CC1S
[CR]	[CR]	[ACM]	Addressable Relay Control Module	SIGA-CR
[DH]	[DH]		Door Holdback	FBO
[PR1]		[R]	Intermediate Auxiliary Relay	System Sensor
[H] #	[H] #	[H] #	Horn/Strobe Unit - Red Wall Mount (# Indicates Candela)	G1RF-HDVM
[S] #	[S] #	[S] #	Strobe Only Unit - Red Wall Mount (# Indicates Candela)	G1RF-VM
[AES]			Subscriber Unit Radio Box w/ Accessories	AES

**Fire Alarm System
 Third Floor Plan**

32"
 16" Scale

* NFPA 170 (2009)
 Tables: 6.5, 6.7.1, 6.7.2, & 6.7.3