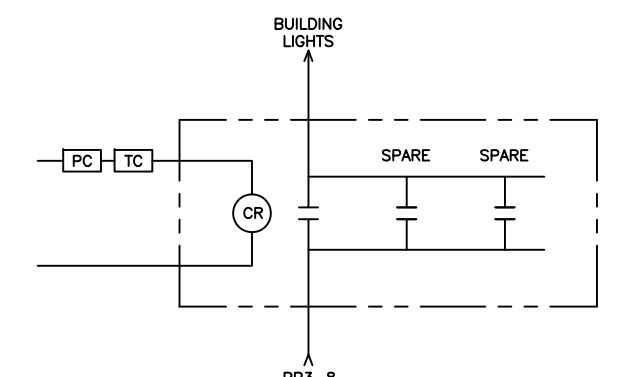


**1** FIRST FLOOR ELECTRICAL LIGHTING AND FIRE ALARM SYSTEM  
SCALE: 1/4"=1'

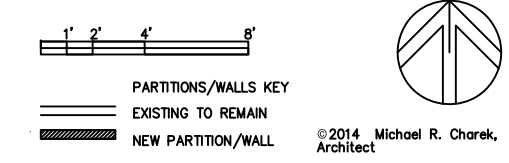
**NOTES:**  
1. SEE E.O.0 FOR LEGEND, ABBREVIATIONS AND GENERAL NOTES.

**KEYED NOTES:**  
① EXISTING FIRE ALARM DEVICE.  
② EXISTING EXIT SIGN OR EMERGENCY LIGHTS.  
③ 120V STAND ALONE DEVICE.

**NOTE:**  
THE FOLLOWING ROOMS ARE EXISTING TO REMAIN AND NOT IN SCOPE OF CONTRACT:  
104 MAINT, 105 ELEV MACHINE, E-1 ELEC, 106 UTILITY, 107 BOILER, 108 STORAGE, 109 STORAGE, 117 BATH, 118 KITCHEN, 120 TOILET, 121 TOILET, 122 CORRIDOR, 123 CORRIDOR, 124 CORRIDOR, 125 DEMO, 126 TEL/DATA, 127 SPRKLR, 128 EXAM, 129 OFFICE, S-1 STAIR.

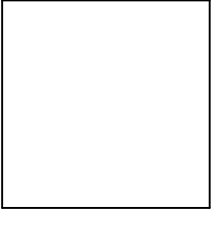


**2** EXTERIOR LIGHTING CONTROLS  
SCALE: NOT TO SCALE



**SWIFTCURRENT**  
Engineering Services  
10 Forest Falls Dr.  
Unit 4b  
Yarmouth, ME 04096  
Tel: (207) 847-9280

Michael Charek  
Architects  
25 Hartley Street  
Portland, Maine 04103  
(207) 761-0556



The Iris Network  
Ryan Building  
Renovations  
189 Park Avenue  
Portland, ME 04102

Title	FIRST FLOOR ELECTRICAL LIGHTING AND FIRE ALARM PLAN
Drawn By:	JMD
Checked By:	TDM
Scale:	AS NOTED
Date:	9/8/14
Revisions	

REV. B - FIRE ALARM REVISIONS 11/20/14  
REV. A - LIGHT SWITCHES 10/3/14

**ISSUED FOR CONSTRUCTION**  
Sheet  
E2.0