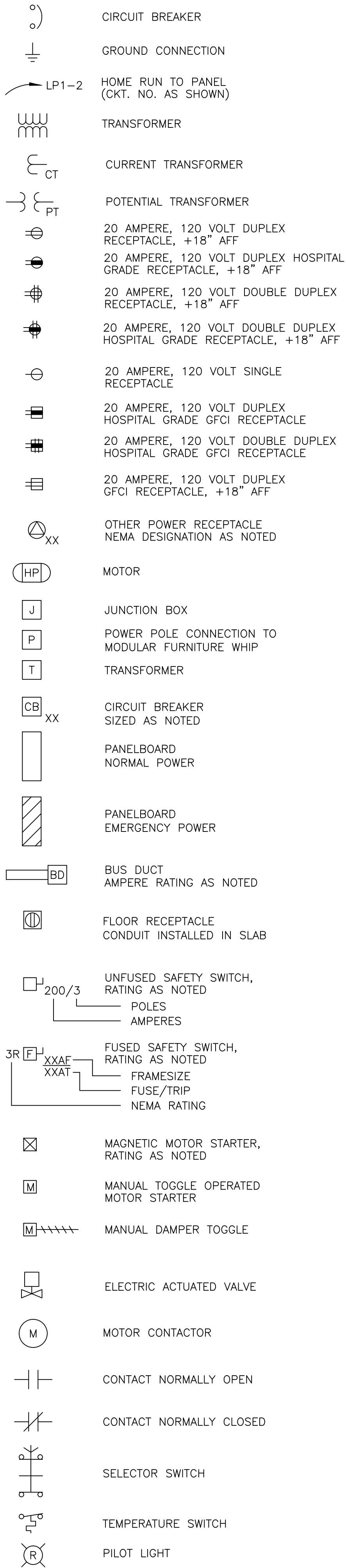
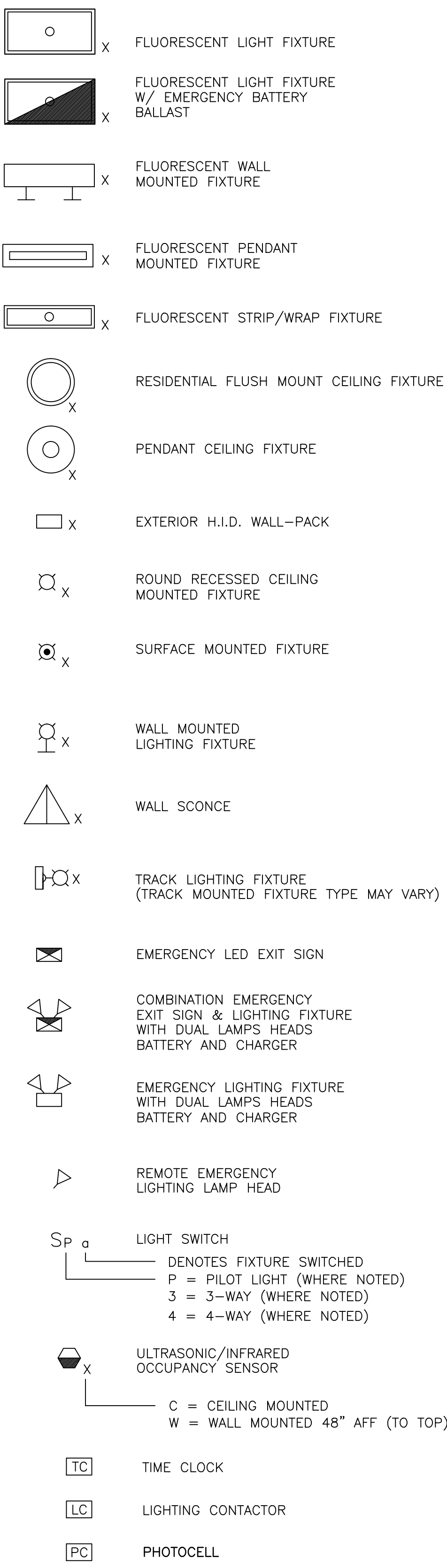


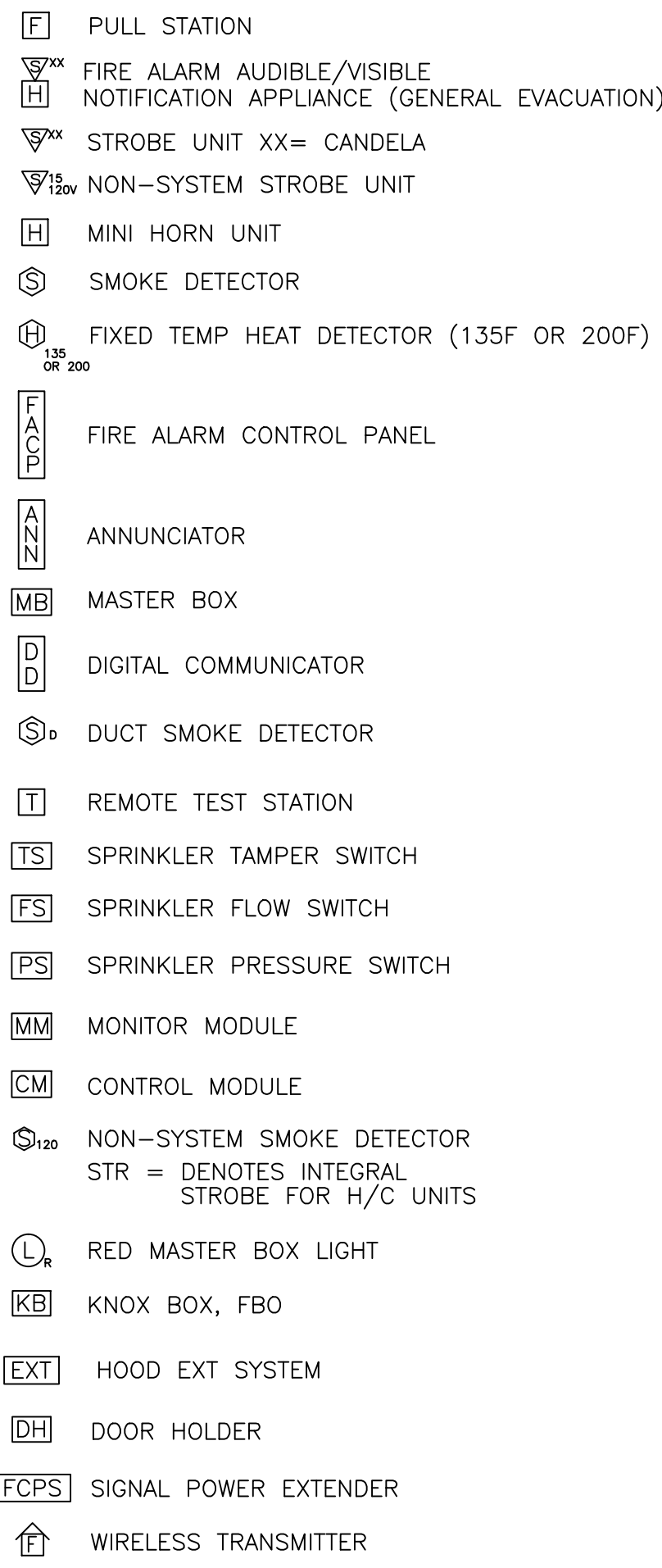
POWER SYMBOLS



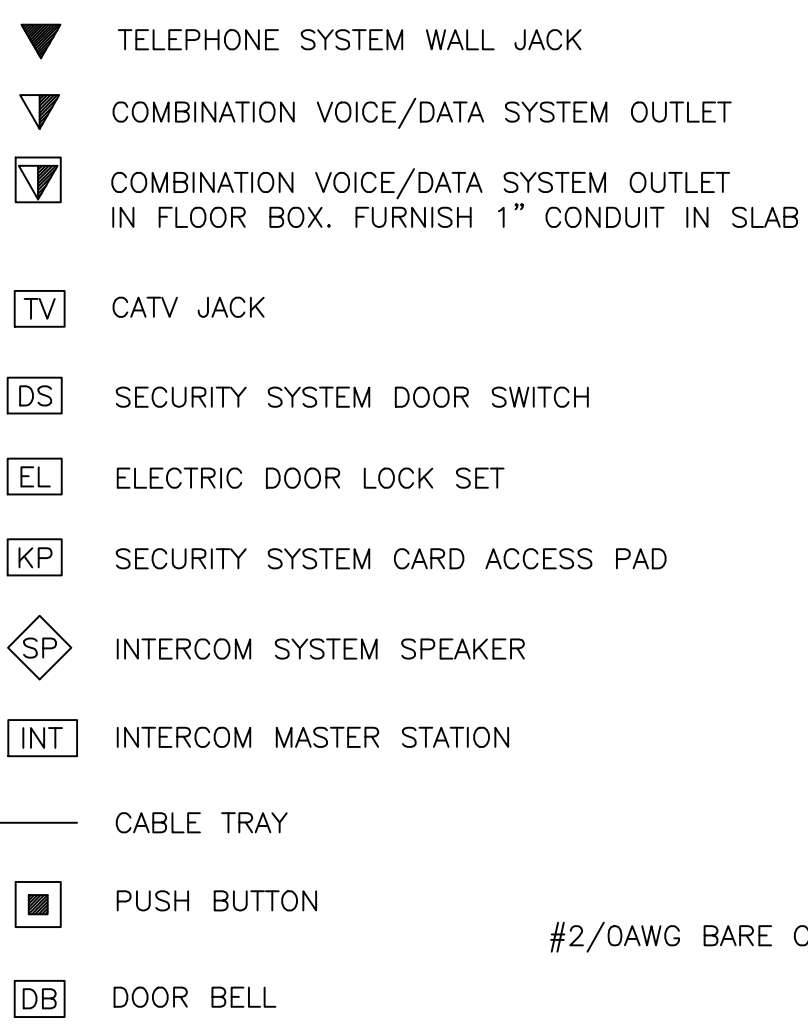
LIGHTING SYMBOLS



FIRE ALARM SYMBOLS



SYSTEMS SYMBOLS



ABBREVIATIONS

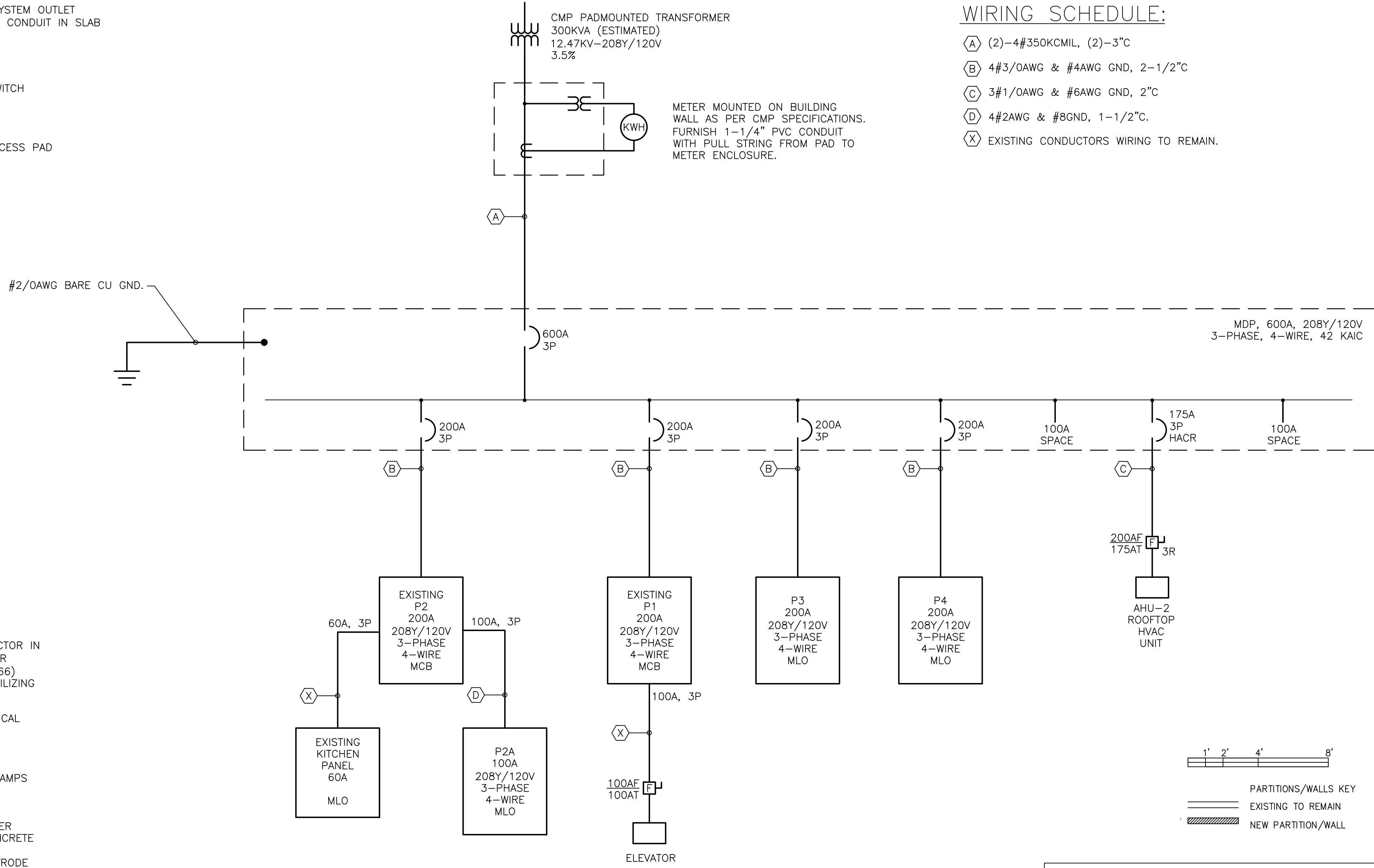
| | | | |
|--------|----------------------------------|------|---------------------------------------|
| A | AMPERE | LV | LOW VOLTAGE |
| AC | ALTERNATING CURRENT | MCB | MAIN CIRCUIT BREAKER |
| AFF | ABOVE FINISHED FLOOR | MCC | MOTOR CONTROL CENTER |
| AFG | ABOVE FINISHED GRADE | MCP | MOTOR CIRCUIT PROTECTION |
| AIC | AMPERES INTERRUPTING CAPACITY | MH | METAL HALIDE |
| AL | ALUMINUM | EMH | ELECTRICAL MANHOLE |
| ASYM | ASYMMETRICAL | MLO | MAIN LUGS ONLY |
| ATS | AUTOMATIC TRANSFER SWITCH | MO | MECHANICALLY OPERATED |
| AUX | AUXILIARY | MOD | MOTOR OPERATED DAMPER |
| AWG | AMERICAN WIRE GAUGE | MTS | MANUAL TRANSFER SWITCH |
| BKR | BREAKER | MV | MERCURY VAPOR |
| C | CONDUIT | MVA | MEGAVOLT-AMPERE |
| CAB | CABINET | NC | NORMALLY CLOSED |
| CB | CIRCUIT BREAKER | NO | NORMALLY OPENED |
| CKT | CIRCUIT | OH | OVERHEAD |
| CT | CURRENT TRANSFORMER | OL | OVER LOAD |
| CU | COPPER | OOA | ON-OFF-AUTOMATIC |
| DC | DIRECT CURRENT | OSY | OUTSIDE STEM & YOKE VALVE (FA SYSTEM) |
| DISC | DISCONNECT | P | POLE |
| EG | EQUIPMENT GROUND | PB | PUSH BUTTON |
| EH | ELECTRICALLY HELD | PF | POWER FACTOR |
| EM | EMERGENCY | PH | PHASE |
| EMT | ELECTRICAL METALLIC TUBING | PNL | PANEL |
| EO | ELECTRICALLY OPERATED | PRI | PRIMARY |
| EPR | ETHYLENE PROPYLENE RUBBER | PT | POTENTIAL TRANSFORMER |
| EQUIP | EQUIPMENT | PVC | POLYVINYL CHLORIDE |
| EX | EXTERIOR | RSSC | RIGID GALVANIZED STEEL CONDUIT |
| FA | FIRE ALARM | RVSS | REDUCED VOLTAGE SOLID STATE |
| FC | FOOT-CANDLE | RSC | RIGID STEEL CONDUIT |
| FDR | FEEDER | RVAT | REDUCED VOLTAGE AUTO TRANSFORMER |
| FLUOR | FLUORESCENT | S | SIGNAL |
| FS | FLOW SWITCH (FA SYSTEM) | SEC | SECONDARY |
| FNR | FULL VOLTAGE NON REVERSING | SHLD | SHIELDED CABLE |
| FVR | FULL VOLTAGE REVERSING | SW | SWITCH |
| GEN | GENERATOR | SWBD | SWITCHBOARD |
| GF | GROUND FAULT | SYM | SYMMETRICAL |
| GFI | GROUND FAULT CIRCUIT INTERRUPTER | T | TELEPHONE |
| GND | GROUND | TR | TRANSFORMER |
| HOA | HAND HOLE | TBD | TO BE DETERMINED |
| HP | HORSE POWER | TD | TELEDIALER |
| HPS | HIGH PRESSURE SODIUM | TDR | TIME DELAY RELAY |
| HV | HIGH VOLTAGE | TEL | TELEPHONE |
| HZ | HERTZ | TM | TELEMETRY |
| IG | ISOLATED GROUND | UG | UNDERGROUND |
| IMC | INTERMEDIATE METAL CONDUIT | UT | UTILITY |
| INCAND | INCANDESCENT | V | VOLT |
| JB | JUNCTION BOX | VA | VOLT-AMPERE |
| KCMIL | THOUSAND CIRCULAR MILS | VFD | VARIABLE FREQUENCY DRIVE |
| KV | KILOVOLT | W | WATT |
| KVA | KILO VOLT-AMPERE | WH | WATT HOUR |
| KW | KILOWATT | WP | WEATHERPROOF |
| KWH | KILOWATT HOUR | XFMR | TRANSFORMER |
| LPS | LOW PRESSURE SODIUM | XLP | CROSS LINKED POLYETHYLENE |
| LTG | LIGHTING | XP | EXPLOSION PROOF |
| LSW | LIGHT SWITCH | | |

GENERAL NOTES

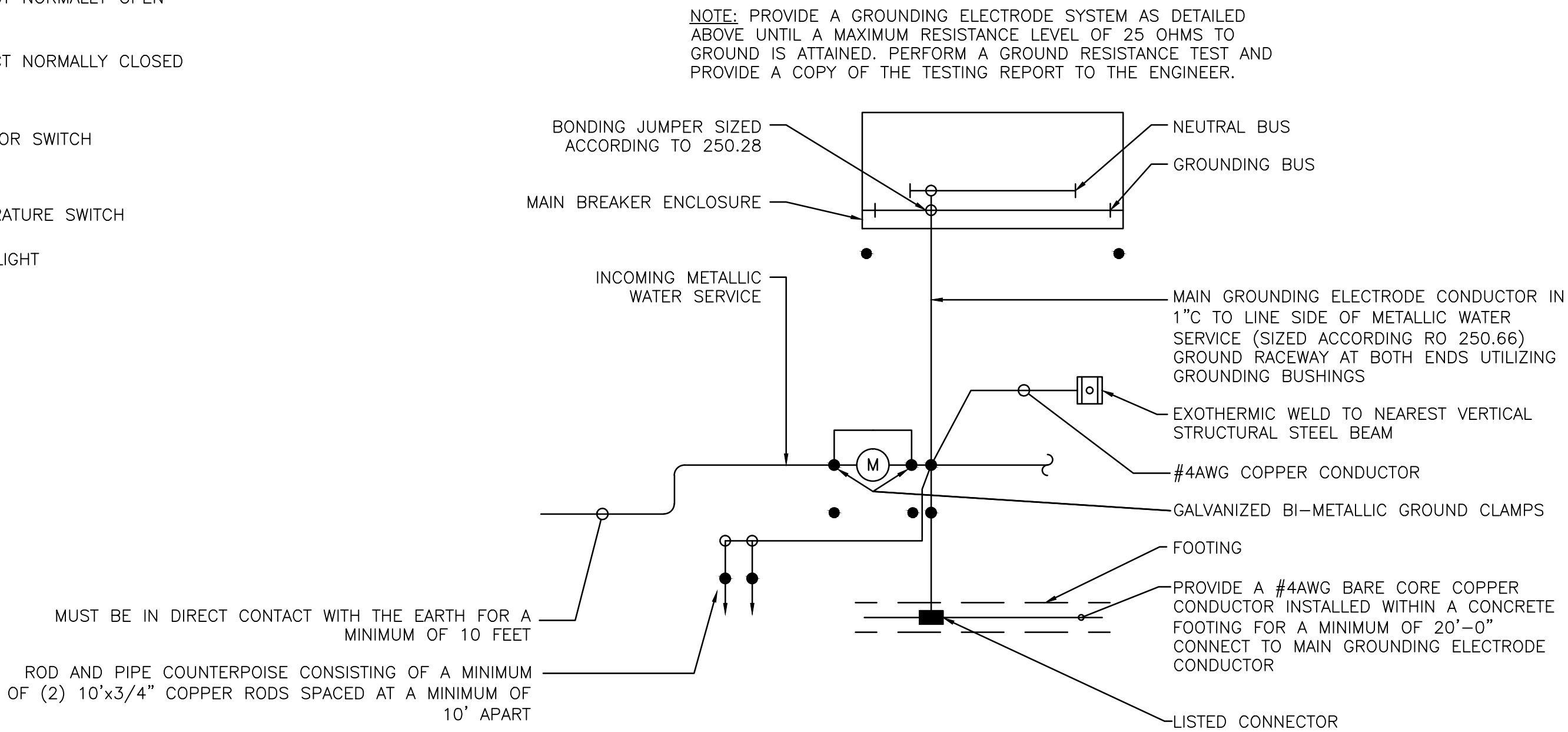
- ALL WORK SHALL BE IN COMPLIANCE WITH NFPA-70, NATIONAL ELECTRICAL CODE.
- ALL MOTOR SAFETY SWITCHES, DISCONNECTS AND MOTOR STARTERS ARE FURNISHED BY DIVISION 16000 UNLESS NOTED AS FURNISHED WITH EQUIPMENT (FWE).
- UNLESS OTHERWISE NOTED, CONVENIENCE RECEPTACLES SHALL BE MOUNTED 18 INCHES AFF AND LIGHTING TOGGLE SWITCHES 48 INCHES AFF.
- ALL PENETRATIONS THROUGH FLOORS, RATED WALLS AND PARTITIONS SHALL BE SEALED WITH A UL APPROVED FIRE SEALANT MATERIAL TO MAINTAIN THE RATING OF THE SEPARATION.
- LIGHTING TOGGLE SWITCHES SHALL BE COMMERCIAL SPECIFICATION GRADE, 120 VOLT, SIDE WIRED AS MANUFACTURED BY LEVITON, PASS & SEYMOUR, OR APPROVED EQUAL.
- CONVENIENCE RECEPTACLES SHALL BE COMMERCIAL SPECIFICATION GRADE UNLESS SHOWN OTHERWISE, GROUNDING TYPE, NEMA 5-20R, SIDE WIRED, AS MANUFACTURED BY LEVITON, PASS & SEYMOUR, OR APPROVED EQUAL.
- DEVICE COVERPLATES SHALL BE THERMOPLASTIC NYLON TYPE WITH IVORY FINISH IN ALL FINISHED SPACES. MECHANICAL ROOMS, ELECTRICAL ROOM, AND UTILITY ROOMS SHALL BE FURNISHED WITH BRUSHED STAINLESS STEEL COVERPLATES.
- UNLESS OTHERWISE NOTED ALL HOMERUNS FOR 15 OR 20A CIRCUITS SHALL BE 2#12AWG & #12 GND. HOMERUNS FED FROM 20A, 1P CIRCUITS IN EXCESS OF 100 FEET (FOR 120V CIRCUITS) SHALL BE #10AWG. ALL WIRING SHALL BE COPPER.
- CONDUIT SYSTEMS: EXPOSED INTERIOR CONDUITS SHALL BE EMT, 3/4" MINIMUM. PROPERLY SUPPORTED MC CABLE ASSEMBLIES MAY BE USED ABOVE CEILINGS AND IN WALLS. FLEXIBLE LIQUIDTIGHT CONDUIT WHIPS SHALL BE USED FOR CONNECTION TO VIBRATING EQUIPMENT IN THE MECHANICAL ROOM.

WIRING SCHEDULE:

- (A) (2)-4#350KCMIL, (2)-3"3C
- (B) 4#3/0AWG & #4AWG GND, 2-1/2"2C
- (C) 3#1/0AWG & #6AWG GND, 2"2C
- (D) 4#2AWG & #8GND, 1-1/2"2C
- (X) EXISTING CONDUCTORS WIRING TO REMAIN.



ELECTRICAL GROUNDING DETAIL

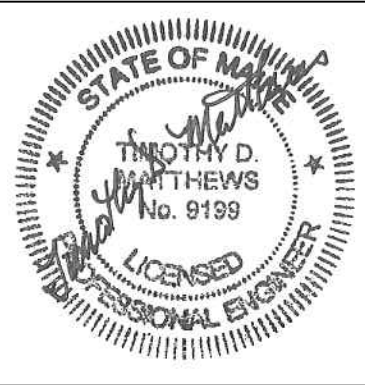


ONE-LINE DIAGRAM

SCALE: NOT TO SCALE

SWIFTCURRENT
Engineering Services
10 Forest Falls Dr.
Unit 4b
Yarmouth, ME 04096
Tel: (207) 847-9280

Michael Charek
Architects
25 Hartley Street
Portland, Maine 04103
(207) 761-0556



The Iris Network
Ryan Building
Renovations
189 Park Avenue
Portland, ME
04102

Title
ELECTRICAL LEGEND,
SYMBOLS, & NOTES

Drawn By: JMD

Checked By: TDM

Scale: AS NOTED

Date: 9/8/14

Revisions

ISSUED FOR
CONSTRUCTION

Sheet

EO.0