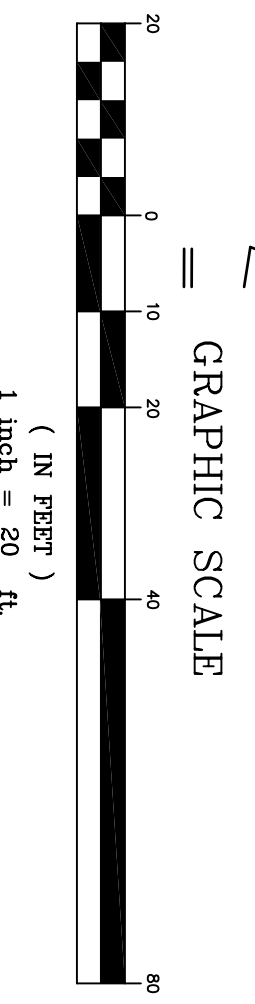
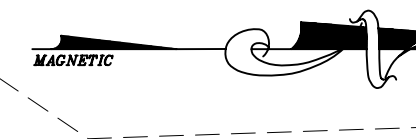
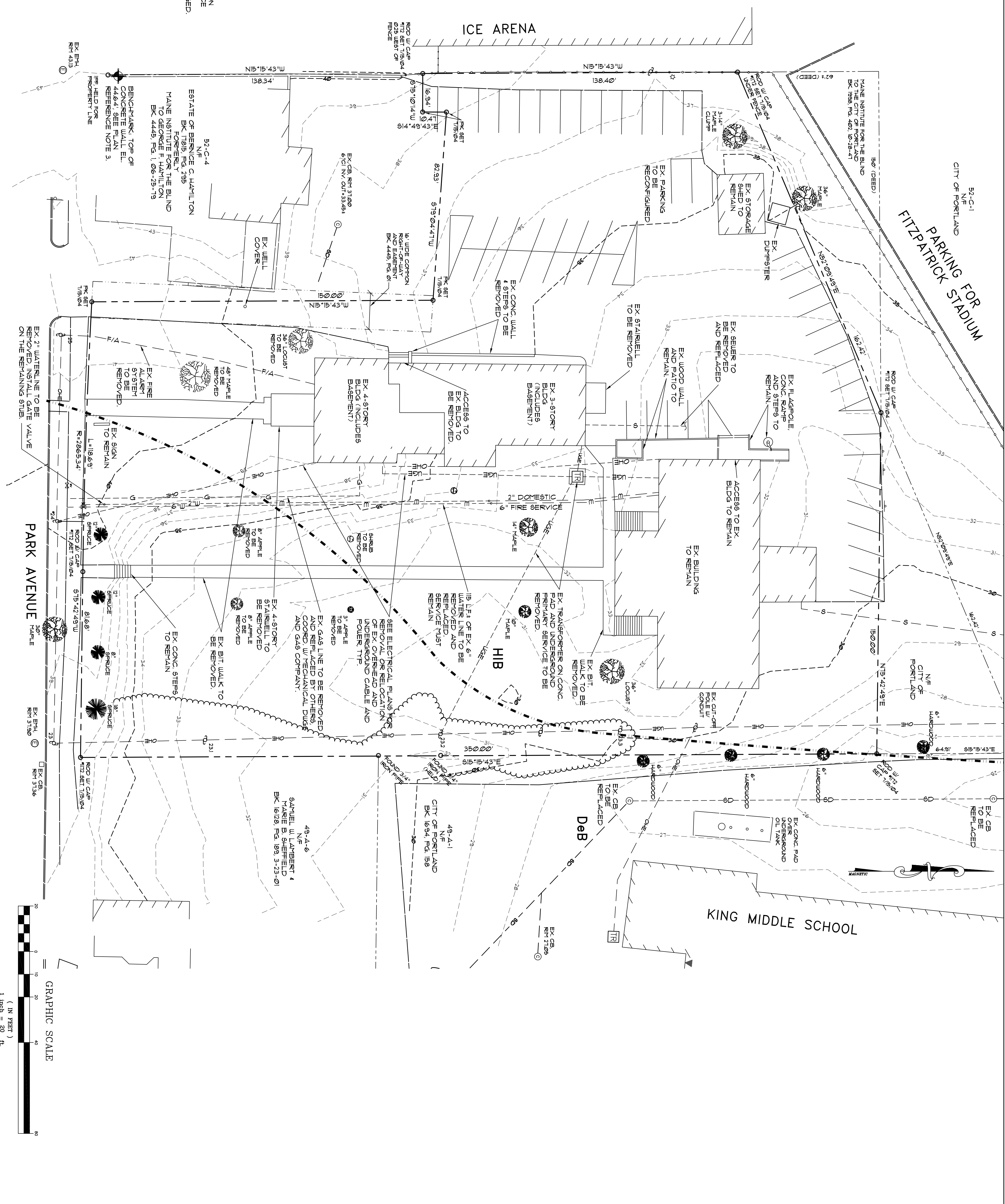


| LEGEND | |
|----------|-----------------------|
| EXISTING | |
| | PROPERTY LINE |
| | BUILDING SETBACK |
| | ABUTTING PROPERTY |
| | EDGE OF PAVEMENT |
| | BUILDING |
| | CURB |
| | CHAINLINK FENCE |
| | OVERHEAD WIRES |
| | UNDERGROUND WIRES |
| | GAS LINE |
| | SEWER |
| | SANITARY SEWER |
| | UNDERDRAIN WIRES |
| | WATER LINE |
| | FIRE ALARM |
| | 604+ |
| | CATCH BASIN |
| | DRAIN MANHOLE |
| | SEWER MANHOLE |
| | UTILITY POLE |
| | TREE |
| | TREE LINE |
| | CHAINLINK FENCE |
| | BENCHMARK |
| | ROUND FOUND |
| | INSITU FOUND |
| | GATE VALVE |
| | GAS VALVE |
| | LIGHT POLE |
| | EX FLAGPOLE |
| | CONTOURS |
| | 300' SOL'S BOUNDARY |
| | 50' SOL'S DESIGNATION |

NOTE:
EX. 6" FIRE PROTECTION
MUST REMAIN IN SERVICE
UNTIL NEW 6" PIPING IS
INSTALLED AND CHARGED.



| | | | | |
|---------------------|-----------------------------------------------|--------------------------------------------------------------------------|----------------------------------------------|------------------------------------------------------------------------------------------------------------------------------------|
| SHEET: C2 | DRAWING: EXISTING SITE AND DEMOLITION PLAN | PROJECT: IRIS NETWORK RENOVATION & ADDITIONS PORTLAND, ME 04101 | OWNER: IRIS NETWORK PORTLAND, ME 04101 | ARCHITECT: SEMPLE & DRANE ARCHITECTS 496 CONGRESS STREET PORTLAND, MAINE 04101 (207) 761-4231 asemple1@maine.rr.com |
| | SCALE: AS SHOWN DATE: MARCH 18, 2009 | REVISIONS: ISSUED FOR BID | | |

