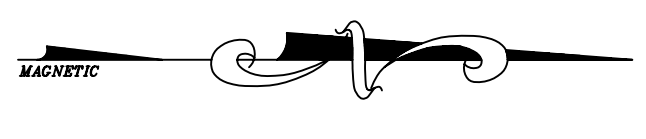
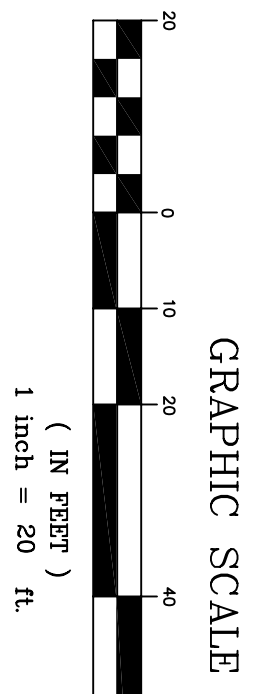
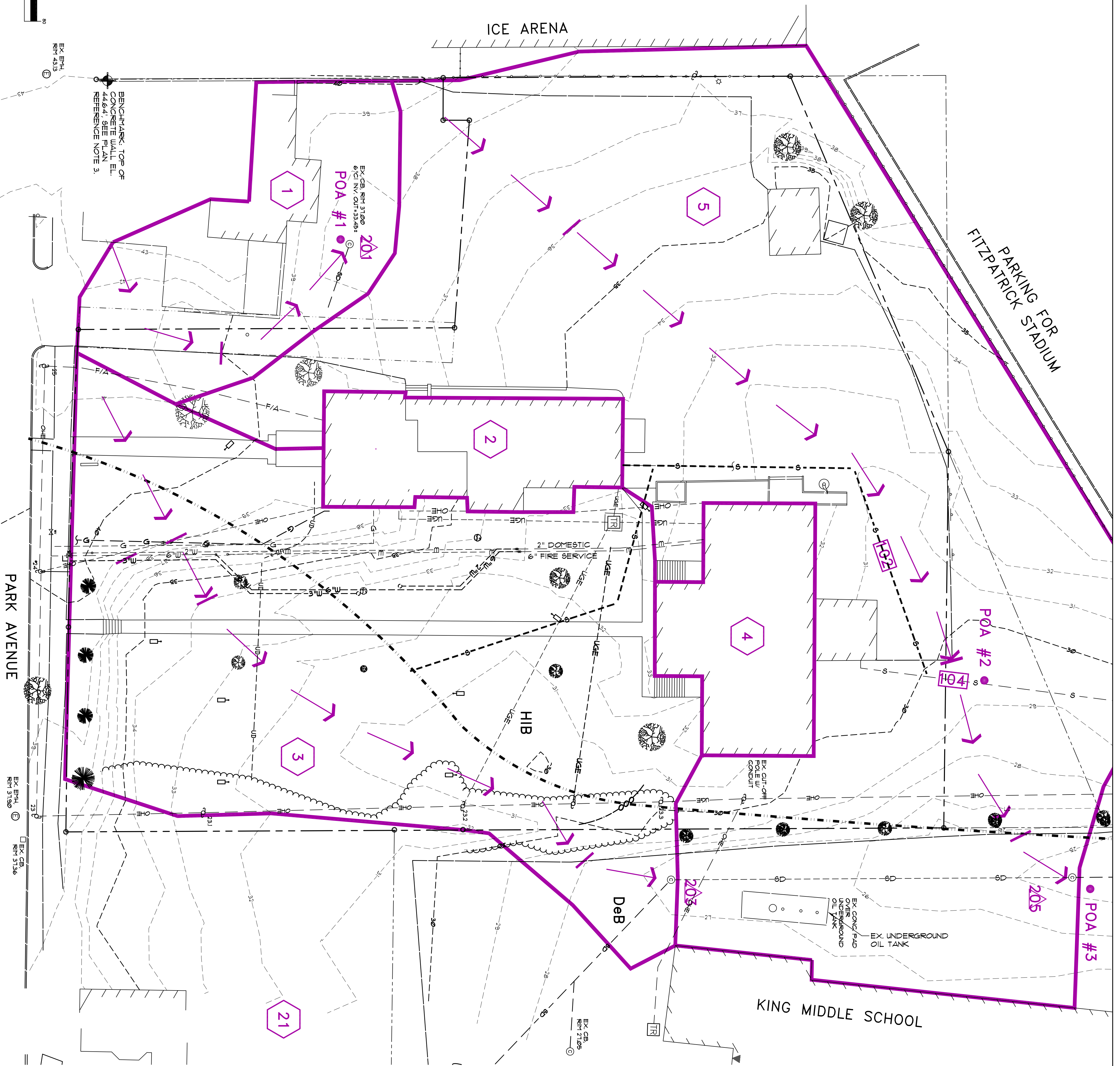


**LEGEND**

EXISTING	
---	PROPERTY
---	BUILDING
---	ASBESTOS
---	ESSENTIAL
---	EDGE OF F
---	BUILDING
---	CURB
---	CHANNEL
---	OVERHEAD
---	UNDERGR
---	UNDERGR
---	STANDARD
---	UNDERGR
---	UNDERGR
---	WATER LINE
---	F/A
---	SPOT GRA
---	DEAN MAN
---	ELECTRIC
---	TRANSFER
---	SEWER MAN
---	UTILITY PC
---	TREELINE
---	SHAWLINK
---	BOUND FOR
---	IRON PIPE
---	HYDRANT
---	GATE VALV
---	GAS VALV
---	LIGHT POLE
---	EX FLAG
---	CONTOUR
---	SOILS DES
---	HIB

**DRAINAGE LEGEND**

---	SUBCATCHMENT PERIMETER
6	SUBCATCHMENT NUMBER
●	POINT OF ANALYSIS
→	TIME OF CONCENTRATION (Tc PATH)
101	REACH
▲	POND



<b>D1</b>	DRAWING: DRAINAGE ANALYSIS – EXISTING CONDITIONS		PROJECT: <b>IRIS NETWORK RENOVATION &amp; ADDITIONS</b> PORTLAND, ME 04101	OWNER: <b>IRIS NETWORK</b> PORTLAND, ME 04101	ARCHITECT: <b>SEMPLER &amp; DRANE ARCHITECTS</b> 496 CONGRESS STREET PORTLAND, MAINE 04101 (207) 761-4231 asemple1@maine.rr.com
	SCALE: AS SHOWN	REVISIONS:			
	DATE: DEC, 2004				

SEAL: