

1. MINIMUM SIZE CONDUIT SHALL BE 1/2" UNLESS NOTED OTHERWISE.
2. SYSTEM WIRING SHALL BE INSTALLED AS SPECIFIED AND IN ACCORDANCE WITH EQUIPMENT SUPPLIER'S APPROVED SHOP DRAWINGS AND WIRING DIAGRAMS.
3. RISER DIAGRAM DOES NOT SHOW ENTIRE SYSTEM. REFER TO FLOOR PLANS FOR EXACT QUANTITIES AND LOCATIONS OF ALL SYSTEM DEVICES.
4. ALL WIRING SHALL BE CONCEALED.

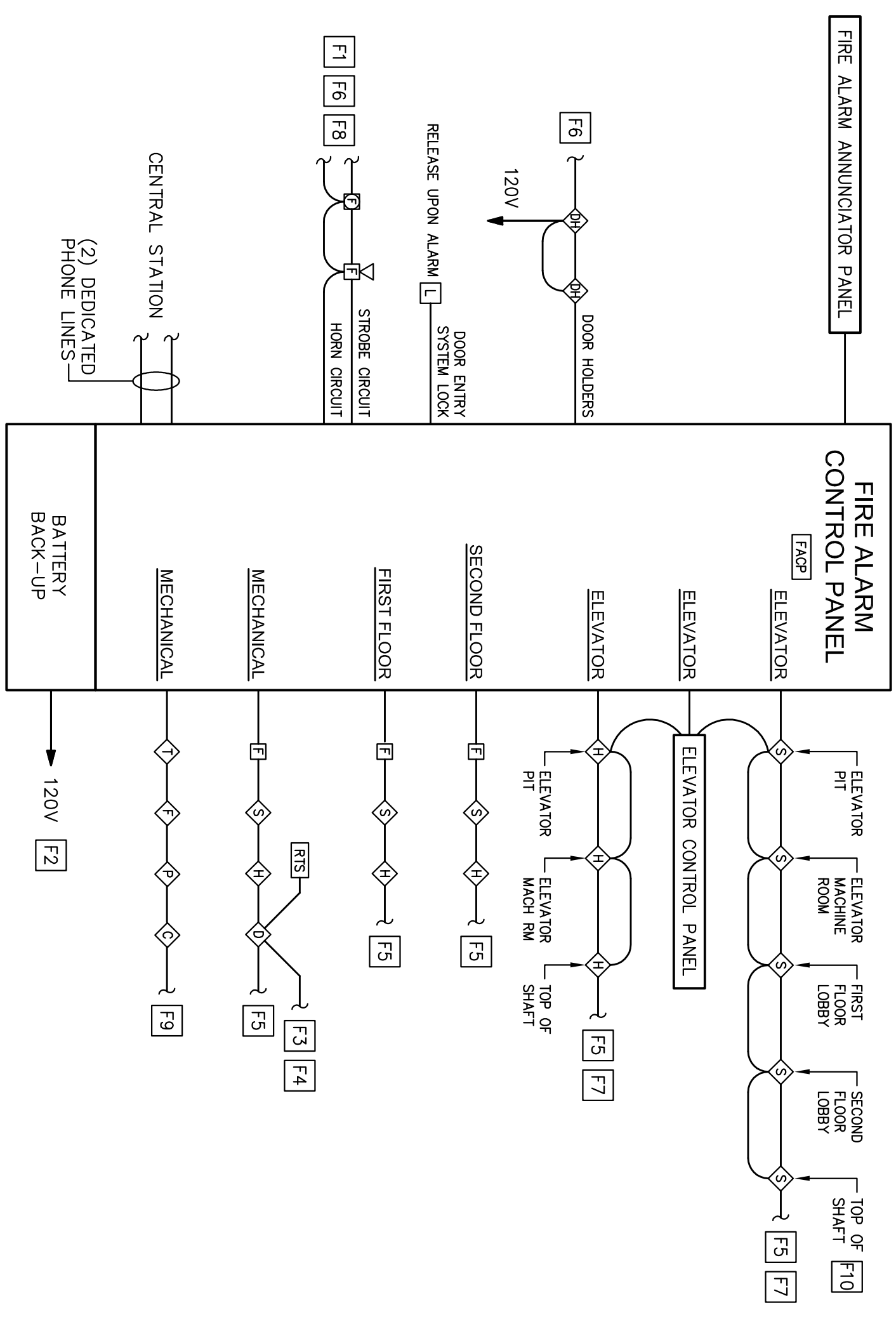
### FIRE ALARM RISER DIAGRAM GENERAL NOTES

NO SCALE

- [F1] PROVIDE CIRCUITS AS REQUIRED FOR AUDIBLE/VISUAL SIGNALS.
- [F2] PROVIDE CIRCUIT BREAKER HANDLE LOCK ON POWER CIRCUIT. HANDLE LOCK SHALL ALLOW THE CIRCUIT BREAKER TO TRIP, BUT PREVENT SWITCHING OF THE CIRCUIT BREAKER TO THE "OFF" POSITION.
- [F3] TO AUXILIARY CONTACTS IN RESPECTIVE AIR-HANDLING UNIT STARTER FOR UNIT SHUTTING ON ALARM LABEL OUT SMOKE DETECTOR AND CORRESPONDING REMOTE TEST STATION UNIDELTY. SEE MECHANICAL DRAWINGS FOR LOCATIONS OF MECHANICAL EQUIPMENT.
- [F4] SEE MECHANICAL DRAWINGS AND SPECIFICATIONS FOR HVAC CONTROLS.
- [F5] CONNECT TO REMAINING INITIATING DEVICES. SEE FLOOR PLANS.
- [F6] CONNECT TO REMAINING APPLIANCES. SEE FLOOR PLANS PROVIDE NUMBER OF CIRCUITS AS REQUIRED.
- [F7] PROVIDE CONTACTS FOR ALL DETECTORS AND CONNECT TO ELEVATOR CONTROLLER FOR SHUNT TRIP OPERATION OF ELEVATOR AND ELEVATOR RECALL. OPERATION OF SMOKE CAUSES ELEVATOR TO GO TO FLOOR OF EGRESS AND LOCK OUT WITH DOOR OPEN. 135° HEAT DETECTOR OPERATION CAUSES SHUNT TRIP CIRCUIT BREAKER TO DISCONNECT ALL POWER TO THE ELEVATOR. MOUNT ALL DETECTORS WITHIN 2' OF THEIR RESPECTIVE SPRINKLER HEAD.
- [F8] STROBES SHALL BE SYNCHRONIZED IN AREAS CONTAINING MULTIPLE UNITS.
- [F9] VERIFY AND WIRE ACTUAL QUANTITY OF SPRINKLER SYSTEM DEVICES
- [F10] PROVIDE ONLY IF SPRINKLER HEAD IS LOCATED AT TOP OF SHAFT ~ COORDINATE WITH DIVISION 13

### FIRE ALARM RISER DIAGRAM KEY NOTES

NO SCALE



### FIRE ALARM RISER DIAGRAM

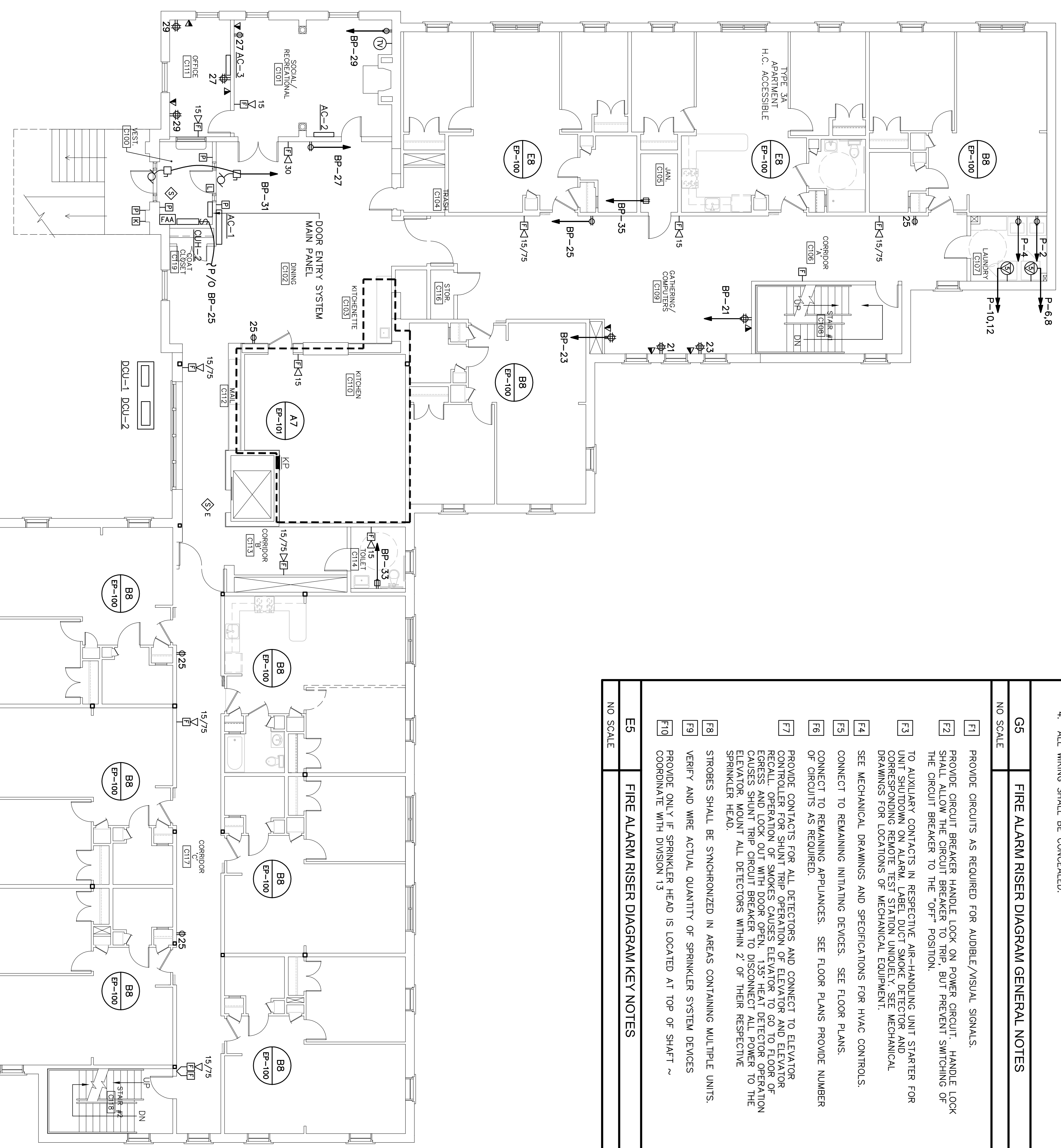
NO SCALE

KITCHEN TAG	EQUIPMENT	PH	KW	HP	FLA	RECEPTACLE	WIRE SIZE	NOTES	
1	DISHWASHER	1	6	3/4	37.7	J-BOX	(3)#6+1(#10)G	4	
2	MIXER 20-QUART	1	-	1/2	8.2	5-20R	(2)#12+1(#12)S	4	
10	REFRIG. COUNTER W/SINK	1	-	1/4	7.1	5-20R	(2)#12+1(#12)S	4	
-	ITEM #10 BUILT-IN RECEPTACLE	1	-	-	16.0	J-BOX	(2)#12+1(#12)S	4	
12	REFRIGERATOR/REFREEZER	1	-	16.0	16.0	J-BOX	(2)#12+1(#12)S	4	
14	REFRIGERATOR/REFREEZER	1	-	16.0	16.0	J-BOX	(2)#12+1(#12)S	4	
14	OVEN CONVECTION GAS	1	-	1/3	6.0	5-20R	(2)#12+1(#12)S	3	
15	HOOD LIGHTS & FIRE SUPPRESSION	1	-	1/2	9.5	J-BOX	(2)#12+1(#12)S	1, 3	
16	REFRIGERATOR 2-SECTION	1	-	1/2	9.5	5-20R	(2)#12+1(#12)S	4	
17	SERVING COUNTER HOT/FOOD	120/208	3	-	23.2	L21-30R	(4)#10+1(#10)S	4	
18	REFRIGERATOR UNDERCOUNTER	120	1	-	1/3	4.5	5-20R	(2)#12+1(#12)S	4
20	MILK DISPENSER	120	1	-	1.7	5-20R	(2)#12+1(#12)S	4	
24A	FREEZER 2-SECTION	120	1	-	3/4	14	5-20R	(2)#12+1(#12)S	2, 4
24B	FREEZER 2-SECTION	120	1	-	3/4	14	5-20R	(2)#12+1(#12)S	2, 4
25	DISPOSER	208	3	-	2.2	J-BOX	(3)#12+1(#12)S	2, 4	
27	JUICE DISPENSER	120	1	-	1.5	5-20R	(2)#10+1(#10)S	4	
28	COFFEE BREWER	120/208	1	-	19.5	14-30R	(2)#10+1(#10)S	4	
28A	COFFEE WARMER	120	1	-	15	5-20R	(2)#12+1(#12)S	4	

NOTES:  
1 PROVIDE HANDLE LOCK ON CIRCUIT BREAKER  
2 WIRE AND CONNECT DISPOSER CONTROLLER FURNISHED BY DIVISION 11. COORDINATE WITH DIVISION 11.  
3 PROVIDE CONTACTOR TO AUTOMATICALLY DISCONNECT POWER FOR ALL ITEMS UNDER THE HOOD AND CLOSE GAS VALVE UPON FIRE SUPPRESSION OPERATION.  
4 PROVIDE WEATHERPROOF RECEPTACLE OR JUNCTION BOX

### KITCHEN EQUIPMENT SCHEDULE

**95% REVIEW**  
25 FEB 2005



### FIRST FLOOR

1/8" = 1'-0"

DRAWING: POWER PLAN ~ FIRST FLOOR  
SCALE: AS NOTED  
CAD FILE: 03066EP.DWG  
DATE: \_\_\_\_\_

REVISIONS:

PROJECT: IRIS PARK APARTMENTS RENOVATION & ADDITIONS  
PORTLAND, MAINE 04101

OWNER: IRIS NETWORK  
PORTLAND, MAINE 04101

ENGINEERING: allied engineering, inc.  
Telephone No: 207-654-1218 • Fax No: 207-654-0020  
E-Mail: info@allied-eng.com • www.allied-eng.com

ARCHITECT: SEMPLE & DRANE ARCHITECTS  
496 CONGRESS STREET  
PORTLAND, MAINE 04101  
TEL: (207) 761-4231 FAX: 774-0152  
sda@sempledrane.com

SHEET: EP-101