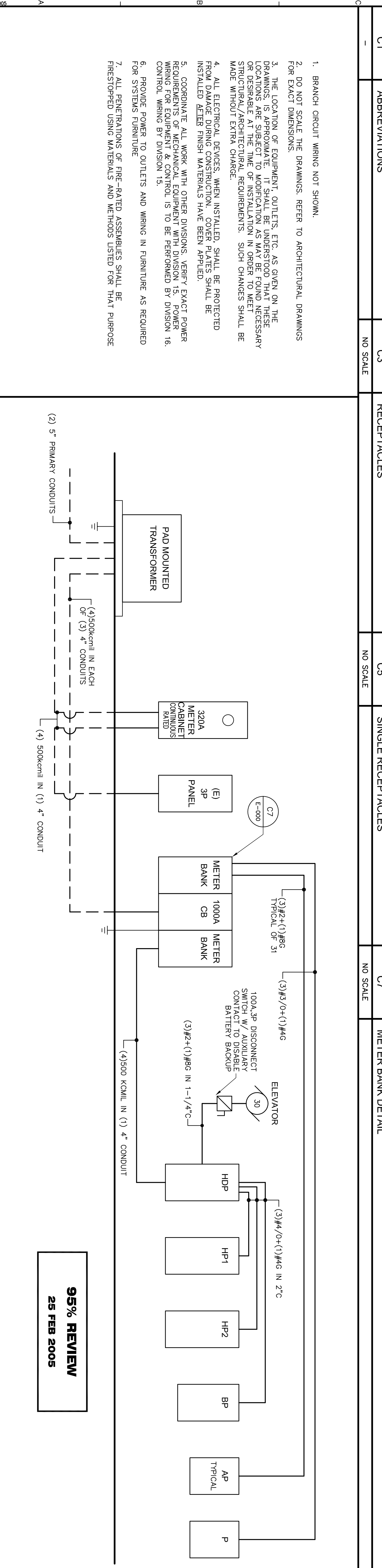


E1 LUMINAIRES NO SCALE AFF ABOVE FINISHED FLOOR UNO UNLESS NOTED OTHERWISE WP WEATHERPROOF BRKRS CIRCUIT BREAKERS P/O PART OF WG WIREGUARD CB CIRCUIT BREAKER MT MOUNT (ER) EXISTING ITEM TO REMAIN (R) REMOVE ITEM AND TURN OVER TO OWNER (ER) RELOCATED ITEM AT NEW LOCATION (RL) REMOVE AND RELOCATE		E3 LIGHT SWITCHES NO SCALE ~ CENTERLINE 48" AFF ~ \$0 LIGHT SWITCH ~ 20A, 125V/277V \$1 LETTER INDICATES SWITCHING \$3 THREE-WAY LIGHT SWITCH \$4 FOUR-WAY LIGHT SWITCH \$2 TWO-POLE SWITCH \$K KEY OPERATED SWITCH \$P SINGLE POLE SWITCH WITH RED PILOT LIGHT ~ RED LIGHT SHALL GLOW WHEN CIRCUIT IS ENERGIZED \$B MULTI-GANGED SWITCHES ~ GANG UNDER ONE PLATE \$B LETTER INDICATES SWITCHING \$S OCCUPANCY SENSOR SWITCH, WALL MOUNTED \$S OCCUPANCY SENSOR SWITCH, CEILING MOUNTED \$FD FLUORESCENT DIMMER SWITCH \$H HANDICAP SWITCHES FOR HOOD LIGHT AND FAN \$T TIMER SWITCH \$P PHOTOCELL ~ CONNECTED TO SITE/EXTERIOR LIGHTING \$LC LIGHTING CONTACTOR		E5 RECEPTACLES NO SCALE ~PROVIDE MATHING CORD AND PLUG~ ① 20A, 125V, 2P, 3W, NEMA 5-20R ② 30A, 250V, 2P, 3W, NEMA L21-30R ③ 20A, 125V, 2P, 3W, NEMA L5-20R (TWISTLOCK) ④ 50A RANGE RECEPTACLE ~ 250V/2P/3W, NEMA 14-50R, (3) #8+(1) #10 TO 40A, 2P CIRCUIT BREAKER ⑤ 30A DRYER RECEPTACLE ~ 250V/2P 3W, GROUNDING, NEMA 14-30R, (3) #10+(1) #8 TO 30A, 2P CIRCUIT BREAKER ⑥ SINGLE RECEPTACLE, 20A, 125V, NEMA 5-20R MOUNT 18" AFF IN ELEVATOR SHAFT FOR ELEVATOR SWMP PUMP ⑦ ⑧ DOUBLE DUPLEX RECEPTACLE ⑨ GFCI DOUBLE DUPLEX RECEPTACLE ~ MOUNT 44" AFF UNO		E7 FIRE ALARM SYSTEM NO SCALE [FAP] FIRE ALARM CONTROL PANEL [FAL] FIRE ALARM ANNUNCIATOR [SD] SMOKE DETECTOR [SS] SINGLE STATION SMOKE DETECTOR WITH AUDIBLE INDICATING APPLIANCE [SS] SINGLE STATION SMOKE DETECTOR WITH AUDIBLE/VISUAL INDICATING APPLIANCE [HEAT] HEAT DETECTOR [DSD] DUCT SMOKE DETECTOR [RETS] REMOTE TEST/INDICATOR FOR DUCT SMOKES [E] MANUAL PULL STATION [E] AUDIO/VISUAL INDICATING APPLIANCE [CAND] ~ CANDLA AS NOTED ON PLANS [CAND] VISUAL INDICATING APPLIANCE [CAND] ~ CANDLA AS NOTED ON PLANS [SPEAKER] SPEAKER/STROBE [CAND] ~ CANDLA AS NOTED ON PLANS [MAGNETO] MAGNETIC DOOR HOLD OPEN DEVICE [SPRINKLER] SPRINKLER SYSTEM WATER FLOW SWITCH ~ PROVIDED UNDER DIVISION 15 ~ WIRED UNDER DIVISION 16 [SPRINKLER] SPRINKLER SYSTEM TAMPER SWITCH ~ PROVIDED UNDER DIVISION 15 ~ WIRED UNDER DIVISION 16 [SPRINKLER] SPRINKLER SYSTEM ALARM CHECK VALVE PRESSURE SWITCH ~ PROVIDED UNDER DIVISION 15 ~ WIRED UNDER DIVISION 16 [SPRINKLER] SPRINKLER SYSTEM EXCESS PRESSURE PUMP ~ PROVIDED UNDER DIVISION 15 ~ WIRED UNDER DIVISION 16 [KNOX] KNOX BOX		E9 POWER DISTRIBUTION NO SCALE [PB] PANELBOARD ~ SURFACE MOUNTED [FL] PANELBOARD ~ FLUSH MOUNTED [FDS] FUSED DISCONNECT SWITCH [NFDS] NON-FUSED DISCONNECT SWITCH [MS] MOTOR STARTER ~ NUMBER INDICATES NEMA SIZE [M] MOTOR ~ NUMBER INDICATES HORSEPOWER [MC] MOTOR AND CABINET [J] JUNCTION BOX ~ WALL MOUNTED [T] TRANSFORMER ~ NUMBER INDICATES DESIGNATION SEE TRANSFORMER SCHEDULE [VFD] VARIABLE FREQUENCY DRIVE [TSS] TRANSIENT VOLTAGE SURGE SUPPRESSOR [C] CONDUIT TURNING UP [D] CONDUIT TURNING DOWN [U] WIRING UNDERGROUND OR UNDERSLAB [H] HOMERUN ~ (2) #12+(1) #2G UNO, (EXCEPT COMPUTER AND LIGHTING CIRCUITS: (1) #12+(1) #10+(1) #2G UNO) SINGLE-PHASE HOMERUN OR MULTIPLE PHASE HOMERUN UTILIZING THE SAME CONDUIT [L-20A, 1P] 3-PHASE HOMERUN OR MULTIPLE HOMERUN UTILIZING THE SAME CONDUIT [L-20A, 1P] INDICATES 20A, 1P LOCKING CIRCUIT BREAKER [F] FLEXIBLE CONNECTION [G] GROUNDING SYSTEM [P] PUSHBUTTON	
C1 ABBREVIATIONS NO SCALE		C3 RECEPTACLES NO SCALE		C5 SINGLE RECEPTACLES NO SCALE		C7 METER BANK DETAIL NO SCALE		E9 POWER DISTRIBUTION NO SCALE	



A1 GENERAL NOTES NO SCALE		A3 POWER RISER NO SCALE	
-------------------------------------	--	-----------------------------------	--

C1 ABBREVIATIONS NO SCALE		C3 RECEPTACLES NO SCALE		C5 SINGLE RECEPTACLES NO SCALE		C7 METER BANK DETAIL NO SCALE		E9 POWER DISTRIBUTION NO SCALE	
-------------------------------------	--	-----------------------------------	--	--	--	---	--	--	--

ARCHITECT:
SEMPL & DRANE ARCHITECTS
 496 CONGRESS STREET
 PORTLAND, MAINE 04101
 TEL:(207) 761-4231 FAX:774-0152
 sda@sempledrane.com

ENGINEERING:

 allied engineering, inc.
 Telephone No: 207-654-2128 • Fax No: 207-654-8020
 E-Mail: info@allied-eng.com • www.allied-eng.com

OWNER:
IRIS NETWORK
 PORTLAND, MAINE 40101

PROJECT:
**IRIS PARK APARTMENTS
 RENOVATION & ADDITIONS**
 PORTLAND, MAINE 04101

DRAWING:
ELECTRICAL LEGEND AND NOTES
 SCALE: AS NOTED
 CAD FILE: 03066EP.DWG
 DATE: _____
 REVISIONS: