

# EXETER STREET - DOOR AND FRAME SCHEDULE

Auburn, ME  
207.784.5100  
  
Portland, ME  
207.775.0053  
  
Manchester, NH  
603.626.1242

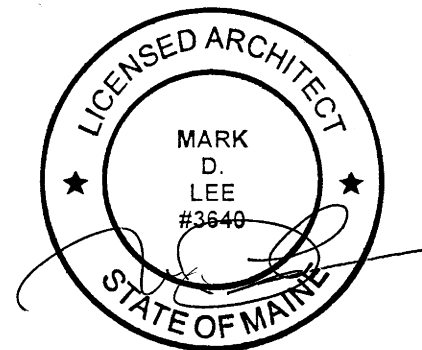
**HARRIMAN**

UNIVERSITY OF  
SOUTHERN MAINE  
55 EXETER ST. SBCD  
PROJECT 2015-011.1

PORTLAND, ME

HA Project No. 15317-01

No.	DOOR PANELS					FRAME			FIRE RATING	HDW SET	REMARKS	
	PANEL SIZE			TYPE	MAT	MAT / FIN	DETAILS					
	WIDT H	HEIGH T	THICK				HEAD	JAMB				SILL
<b>1ST FLOOR</b>												
100	3' - 0"	7' - 0"	1 3/4"	N	WD	EXG				1	ALT #1. NEW DOOR SLAB, EXG FRAME AND HARDWARE TO REMAIN. REUSE HARDWARE.	
101	3' - 0"	7' - 0"	1 3/4"	N	WD	EXG				1	ALT #1. NEW DOOR SLAB, EXG FRAME AND HARDWARE TO REMAIN. REUSE HARDWARE.	
102	3' - 0"	7' - 0"	1 3/4"	N	WD	EXG				1	ALT #1. NEW DOOR SLAB, EXG FRAME AND HARDWARE TO REMAIN. REUSE HARDWARE.	
103A	3' - 0"	7' - 0"	1 3/4"	N	WD	WD				3	BASE BID	
104	3' - 0"	7' - 0"	1 3/4"	N	WD	EXG				1	ALT #1. NEW DOOR SLAB, EXG FRAME AND HARDWARE TO REMAIN. REUSE HARDWARE.	
109	3' - 0"	7' - 0"	1 3/4"	N	WD	EXG				1	ALT #1. NEW DOOR SLAB, EXG FRAME AND HARDWARE TO REMAIN. REUSE HARDWARE.	
110	2' - 6"	7' - 0"	1 3/4"	N	WD	EXG				1	ALT #1. NEW DOOR SLAB, EXG FRAME AND HARDWARE TO REMAIN. REUSE HARDWARE.	
199	3' - 0"	7' - 0"	1 3/4"	F	WD	HM			45 MIN	2	BASE BID - NEW RATED DOOR AND FRAME	
<b>2ND FLOOR</b>												
201	2' - 8"	7' - 0"	1 3/4"	N	WD	EXG				1	ALT #1. NEW DOOR SLAB, EXG FRAME AND HARDWARE TO REMAIN. REUSE HARDWARE.	
203	2' - 8"	7' - 0"	1 3/4"	N	WD	EXG				1	ALT #1. NEW DOOR SLAB, EXG FRAME AND HARDWARE TO REMAIN. REUSE HARDWARE.	
205	2' - 8"	7' - 0"	1 3/4"	N	WD	EXG				1	ALT #1. NEW DOOR SLAB, EXG FRAME AND HARDWARE TO REMAIN. REUSE HARDWARE.	
206	2' - 8"	7' - 0"	1 3/4"	N	WD	EXG				1	ALT #1. NEW DOOR SLAB, EXG FRAME AND HARDWARE TO REMAIN. REUSE HARDWARE.	
207	2' - 8"	7' - 0"	1 3/4"	N	WD	EXG				1	ALT #1. NEW DOOR SLAB, EXG FRAME AND HARDWARE TO REMAIN. REUSE HARDWARE.	
207	2' - 8"	7' - 0"	1 3/4"	N	WD	EXG				1	ALT #1. NEW DOOR SLAB, EXG FRAME AND HARDWARE TO REMAIN. REUSE HARDWARE.	
208	2' - 8"	7' - 0"	1 3/4"	N	WD	EXG				1	ALT #1. NEW DOOR SLAB, EXG FRAME AND HARDWARE TO REMAIN. REUSE HARDWARE.	
211	2' - 8"	7' - 0"	1 3/4"	N	WD	EXG				1	ALT #1. NEW DOOR SLAB, EXG FRAME AND HARDWARE TO REMAIN. REUSE HARDWARE.	
212	2' - 8"	7' - 0"	1 3/4"	N	WD	EXG				1	ALT #1. NEW DOOR SLAB, EXG FRAME AND HARDWARE TO REMAIN. REUSE HARDWARE.	



## DOOR HARDWARE SPECIFICATIONS:

### DOOR HARDWARE SCHEDULE

#### Heading 1

Doors 100, 101, 102, 104, 109, 201, 203, 205, 206, 207, 208, 211, 212  
 - New Wood Door in Existing Wood Frame  
 Each Leaf Shall Have: Existing Hinges (salvaged), Existing Lockset (salvaged) (Office Function), Wall Stop.

#### Heading 2

Door 199  
 - New HM Door in New HM Frame  
 Each Leaf Shall Have: BB Hinges, Lock and Latch, Door Closer, Kick Plates, Astragal Smoke Seal  
 - Kerf smoke seals provided under Section 081113.

#### Heading 3

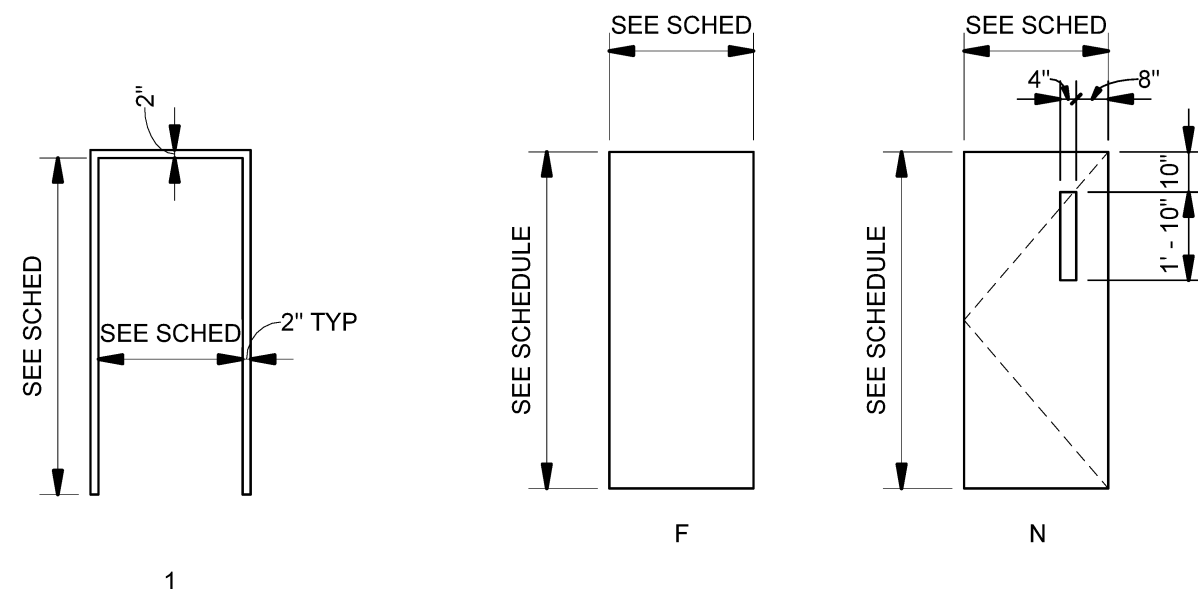
Doors 103A  
 - New Door in new HM Frame (salvage Jamb trim, New Head trim)  
 Each Leaf Shall Have: Existing Hinges (salvaged), Existing Lockset (salvaged) (Office Function), Wall Stop.

#### Locks and Latches

Schlage: ND- Series, Lever design Rhodes RHO (Coord w/ Owner), 3-1/2-inch Rose, core to receive Medeco cylinder, ANSI Curved Lip Strike 10-025.

#### Surface-Mounted Closers

LCN Closers; an Ingersoll-Rand Company (LCN).  
 Model: 4040 Series.



**A1** DOOR FRAME TYPES  
 SCALE: 1/4" = 1'-0"

**A2** DOOR TYPES  
 SCALE: 1/4" = 1'-0"

Date	05-19-15
Scale	As indicated

05-19-15 - ISSUED FOR BID

© 2015 Harriman Associates

**55 EXETER STREET  
 DOOR SCHEDULE, TYPES  
 AND SPECIFICATIONS**

# A10.4