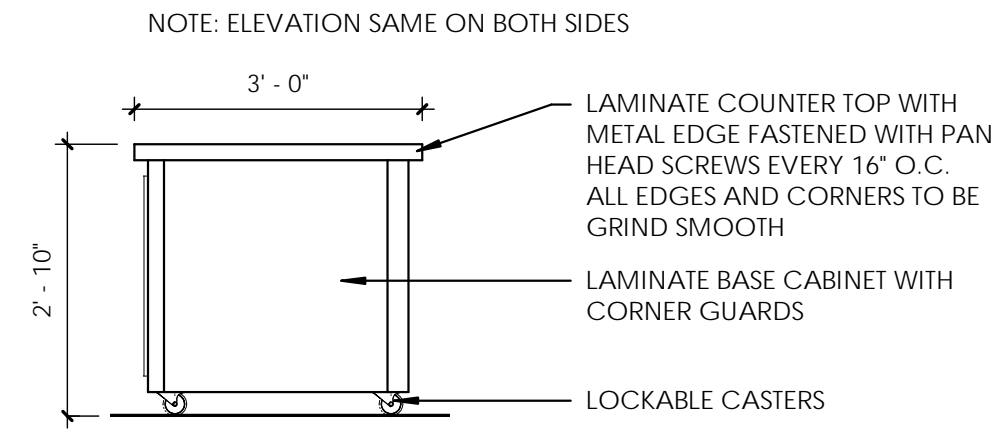
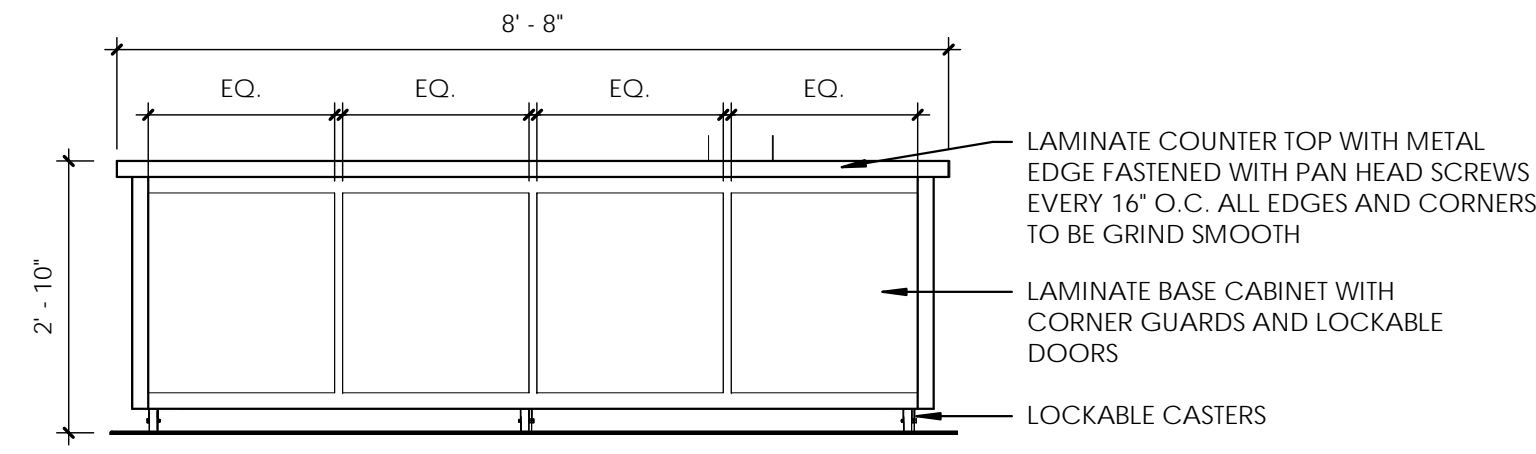


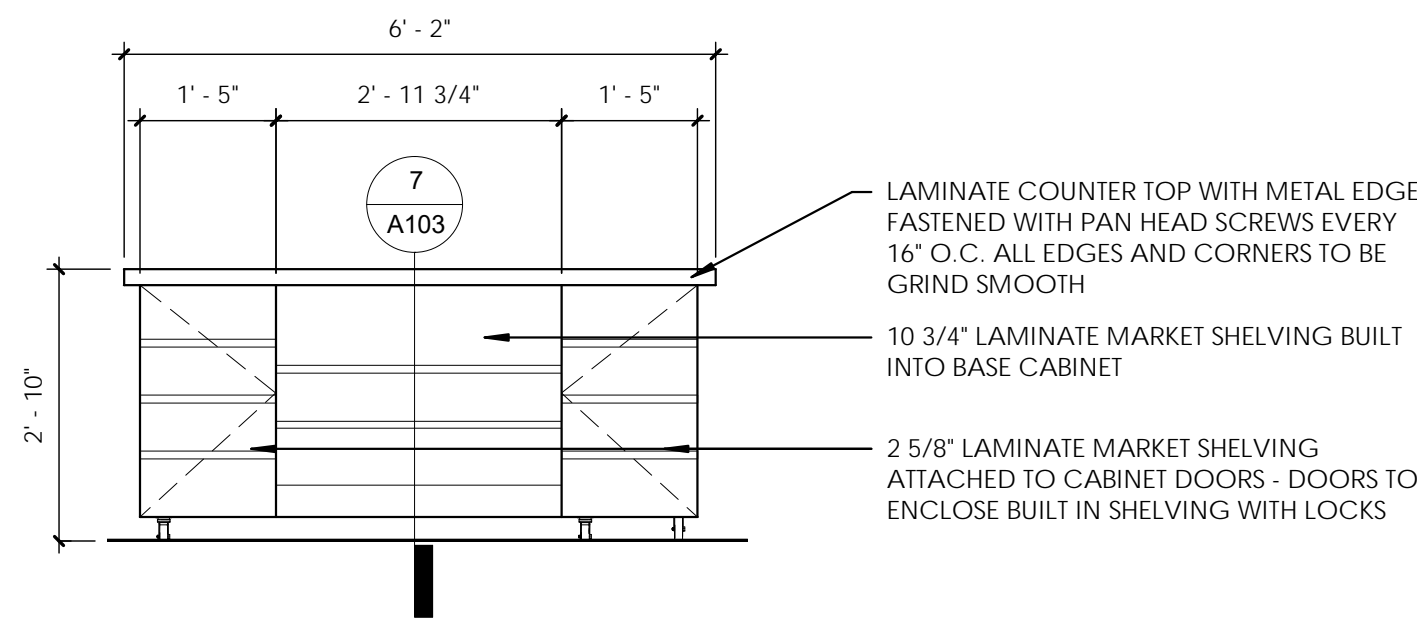
1
A103
PORTABLE COUNTER INTERIOR
ELEVATION 1
1/2" = 1'-0"



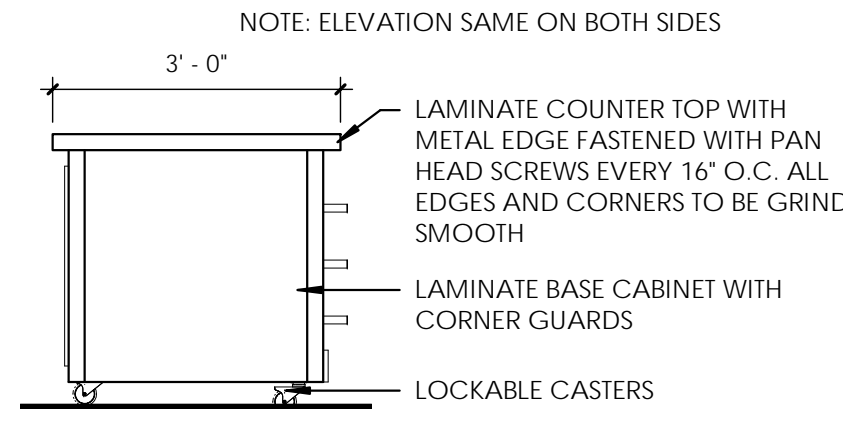
2
A103
PORTABLE COUNTER INTERIOR
ELEVATION 2
1/2" = 1'-0"



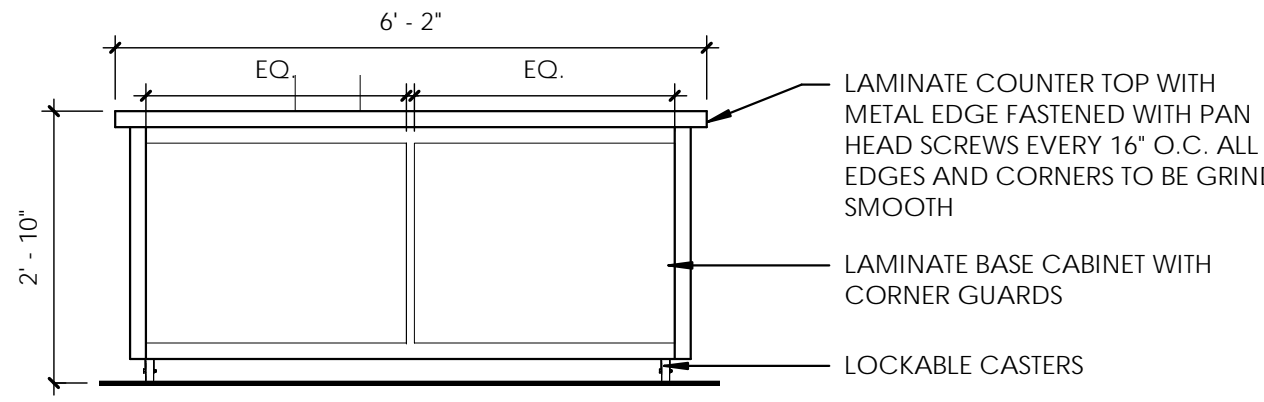
3
A103
PORTABLE COUNTER INTERIOR
ELEVATION 3
1/2" = 1'-0"



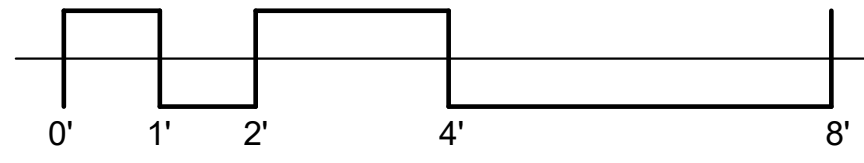
4
A103
PORTABLE MERCHANDISER
COUNTER INTERIOR
ELEVATION 1
1/2" = 1'-0"



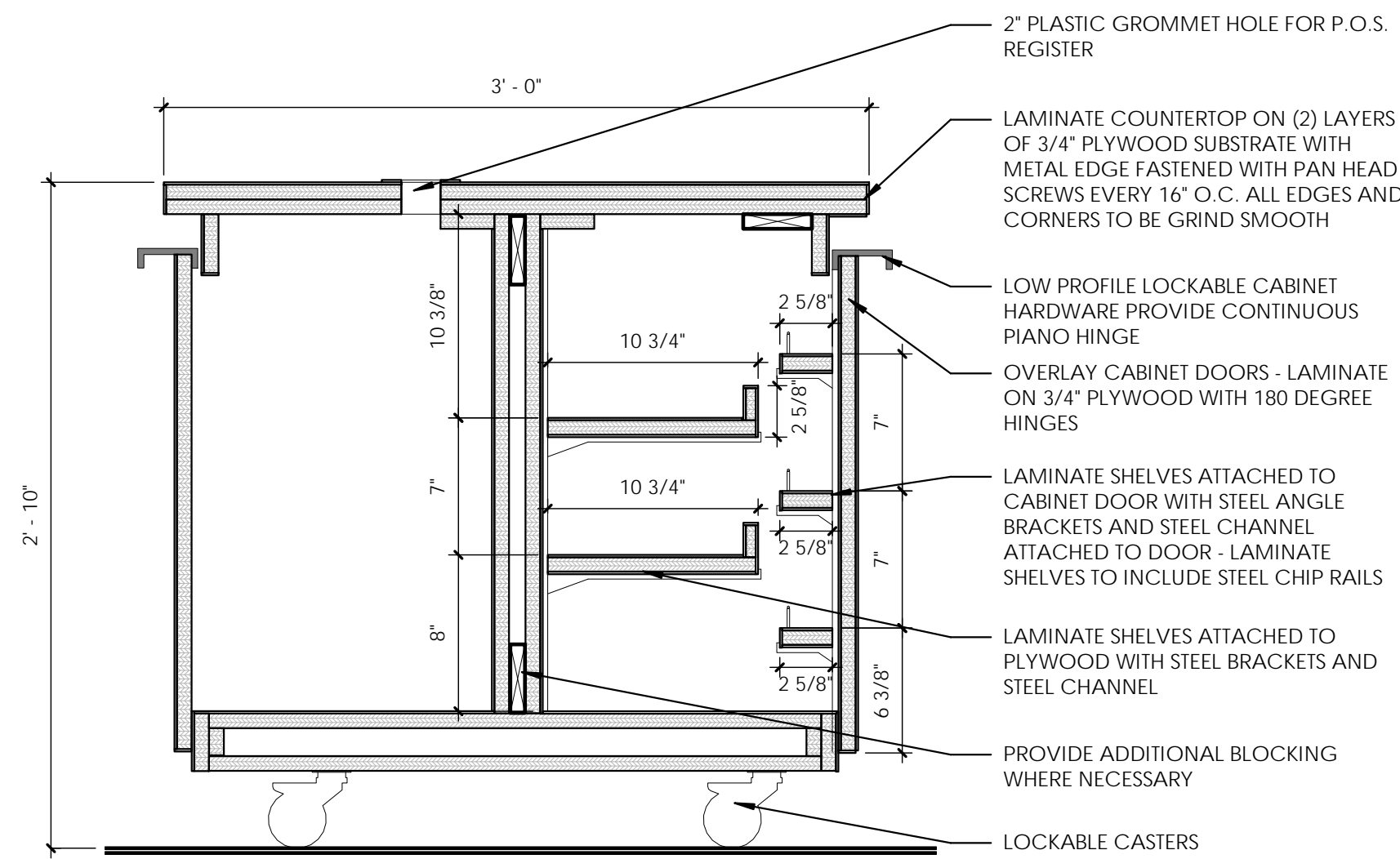
5
A103
PORTABLE MERCHANDISER
COUNTER INTERIOR
ELEVATION 2
1/2" = 1'-0"



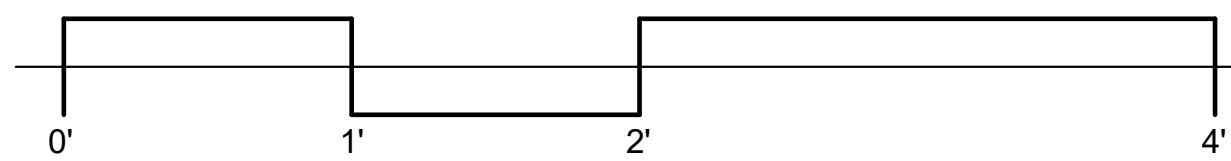
6
A103
PORTABLE MERCHANDISER
COUNTER INTERIOR
ELEVATION 3
1/2" = 1'-0"



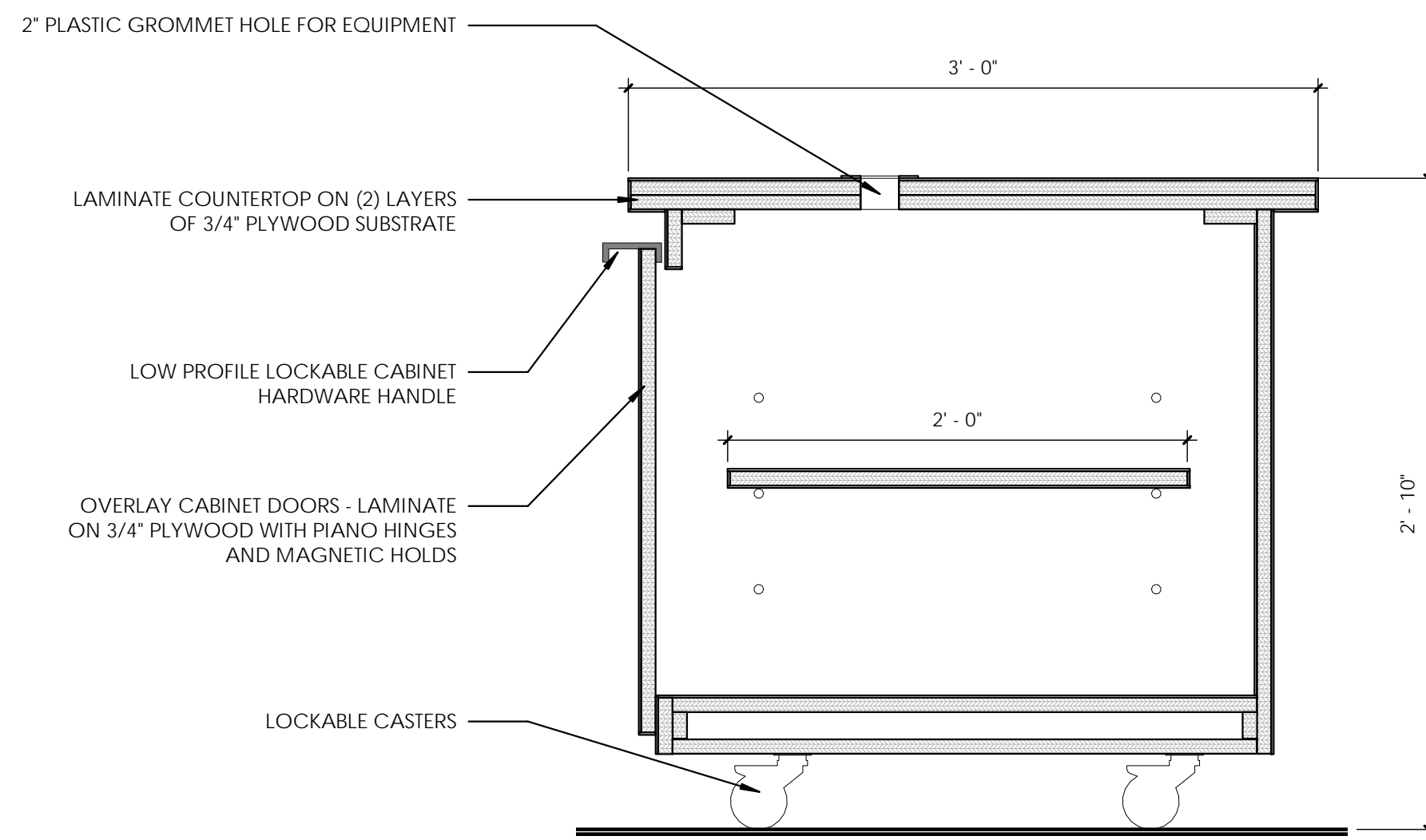
GRAPHIC SCALE: 1/2" = 1'-0"



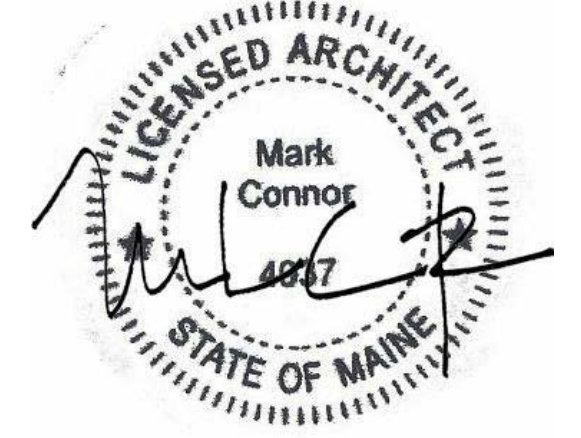
7
A103
SECTION THROUGH PORTABLE
MERCHANDISER COUNTER
1 1/2" = 1'-0"



GRAPHIC SCALE: 1-1/2" = 1'-0"



8
A103
SECTION THROUGH PORTABLE
COUNTER
1 1/2" = 1'-0"



CONNOR ARCHITECTURE ACCEPTS NO RESPONSIBILITY FOR UNAUTHORIZED REPRODUCTION OR UNAUTHORIZED USE OF THIS DOCUMENT.
DRAWINGS ARE FOR GENERAL PURPOSES ONLY. NO MEASUREMENTS SHALL BE SCALED OFF DRAWINGS. ALL MEASUREMENTS SHALL BE VERIFIED IN FIELD.

ARCHITECT:



1656 Massachusetts Ave.
Lexington, MA 02420
Tel: 781-652-0114
connorarchitecture.com

REVISIONS

MILLWORK DETAILS AND
ELEVATIONS

246 DEERING AVENUE
PORTLAND, ME 04102

GARBRECHT LAW CAFE
UNIVERSITY OF SOUTHERN MAINE

ISSUED:
JANUARY 19, 2017

DESCRIPTION:
100% CONSTRUCTION
DOCUMENTS

A103
SHEET