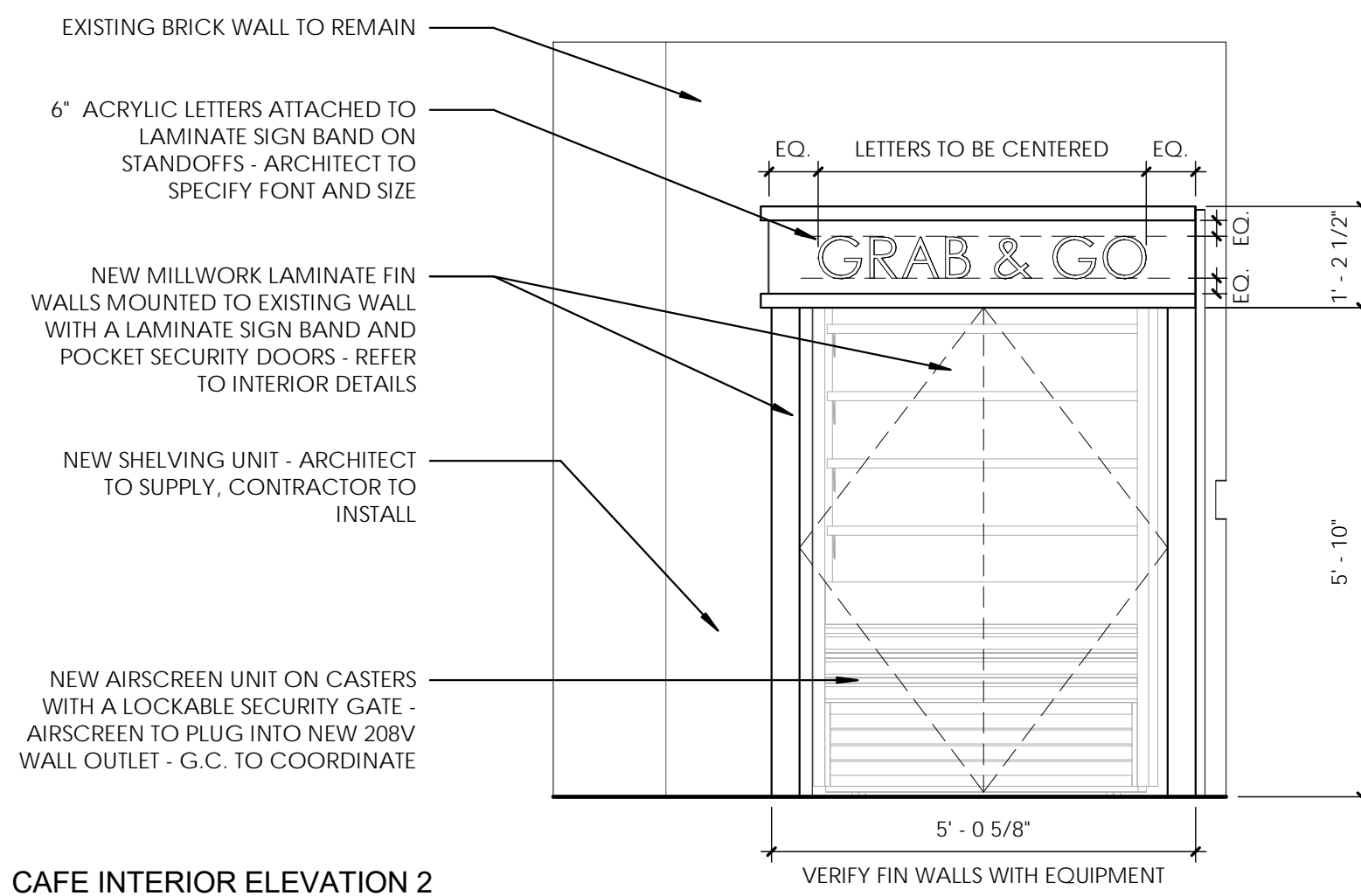
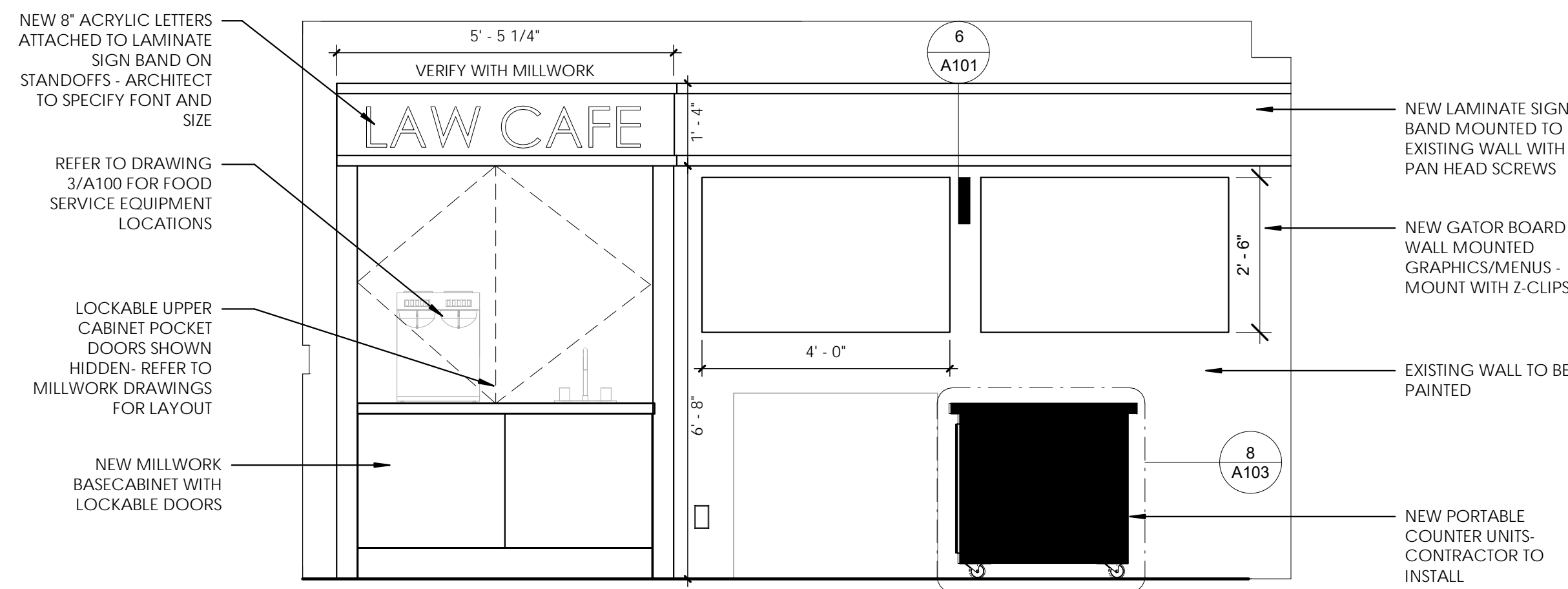


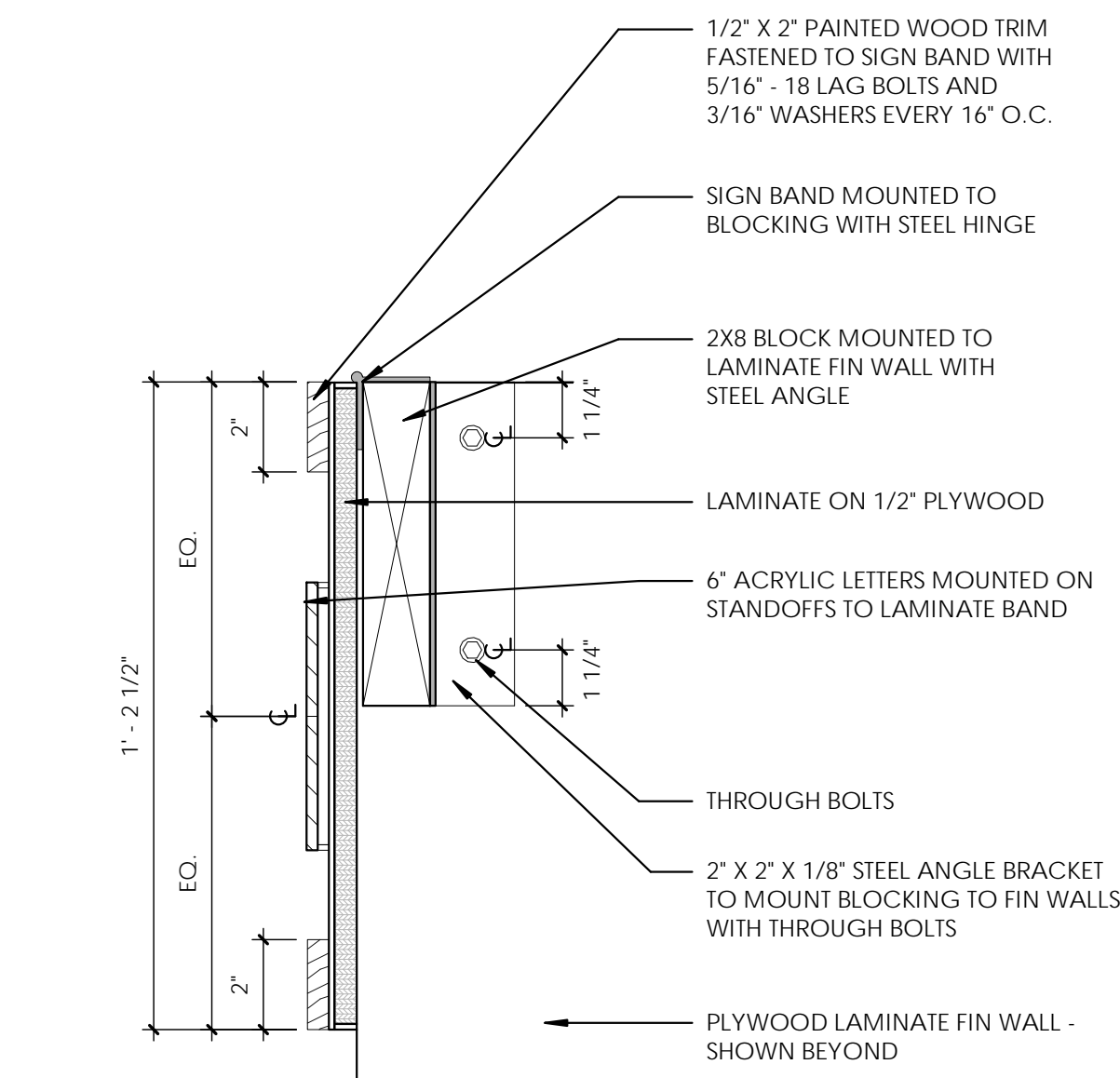
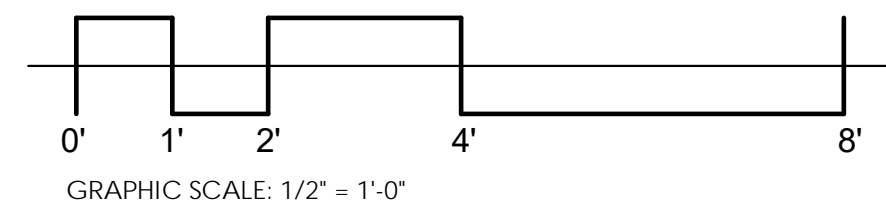
1 CAFE INTERIOR ELEVATION 1
A101 1/2" = 1'-0"



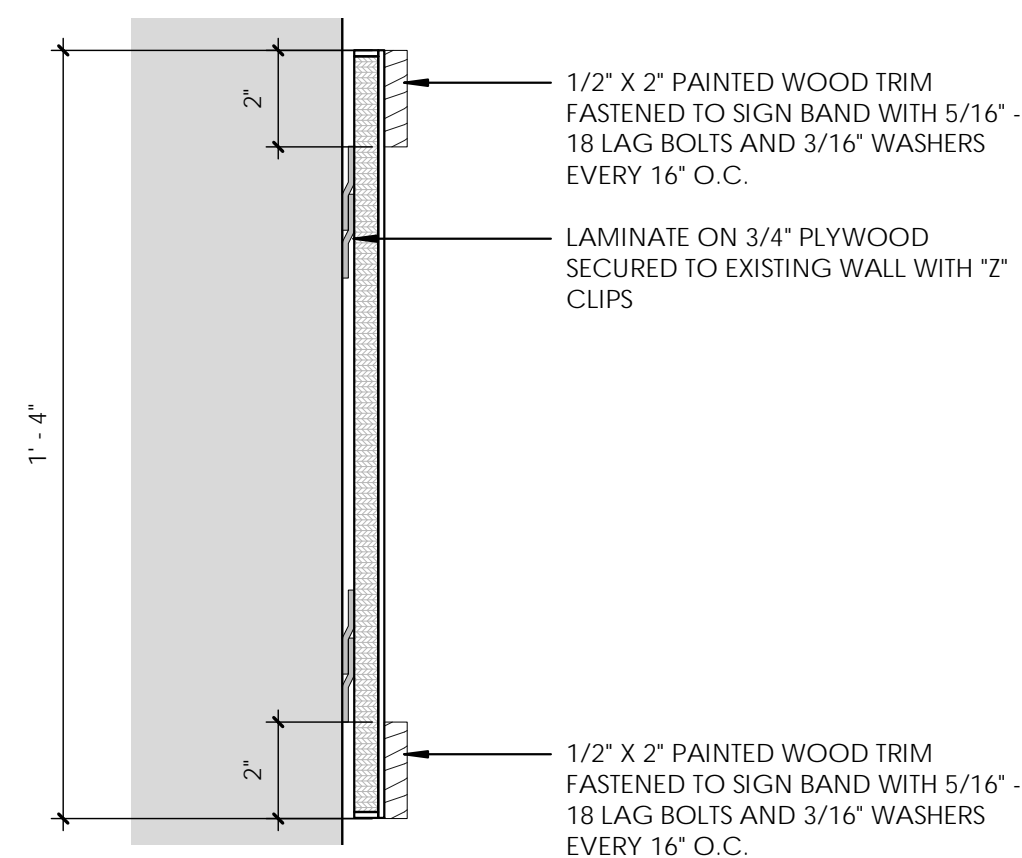
2 CAFE INTERIOR ELEVATION 2
A101 1/2" = 1'-0"



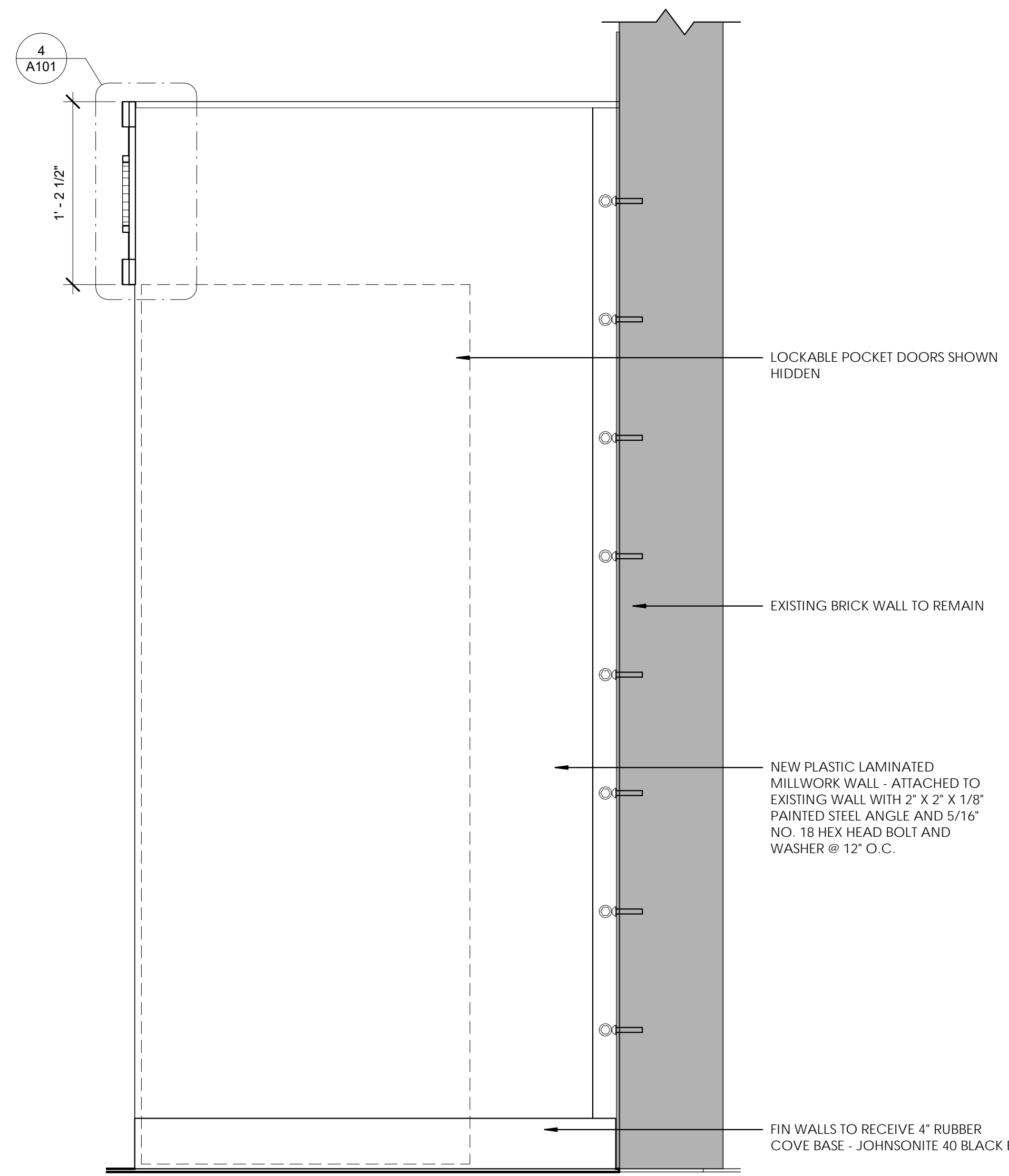
3 CAFE INTERIOR ELEVATION 3
A101 1/2" = 1'-0"



4 TYPICAL SECTION THROUGH SIGN BAND
A101 3" = 1'-0"



6 SECTION THROUGH WALL SIGN BAND
A101 3" = 1'-0"



5 SECTION THROUGH AIRSCREEN MILLWORK
A101 1 1/2" = 1'-0"

WALL FINISHES

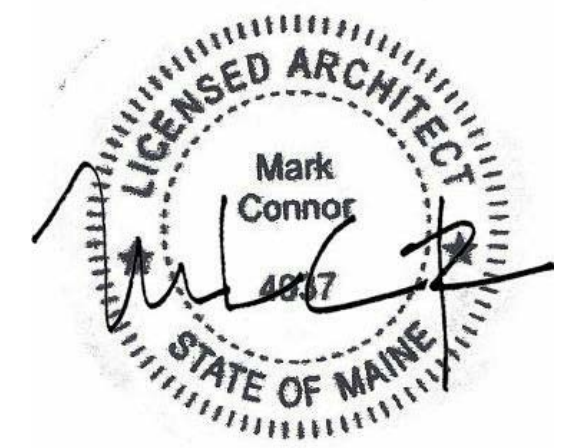
INTERIOR PAINT INFORMATION

PROVIDE THE FOLLOWING PAINT SYSTEMS FOR THE VARIOUS SUBSTRATES, AS INDICATED. ARCHITECT TO PROVIDE COLORS. ALL PRODUCTS LISTED ARE MANUFACTURED BY BENJAMIN MOORE, UNLESS NOTED. PROVIDE SPECIFIED PRODUCT OR EQUIVALENT PRODUCTS BY THE FOLLOWING:
1. SHERWIN WILLIAMS.

≥ TYPE IP-1 GYPSUM DRYWALL WALLS - EGG SHELL, LATEX ENAMEL FINISH 2 FINISH COATS OVER A PRIMER.

1. FIRST AND SECOND COATS: EGG SHELL, LATEX ENAMEL, INTERIOR PAINT 0 VOC LOW ODOR: SHERWIN WILLIAMS.

COLORS TO BE SELECTED BY ARCHITECT



CONNOR ARCHITECTURE ACCEPTS NO RESPONSIBILITY FOR UNAUTHORIZED REPRODUCTION OR UNAUTHORIZED USE OF THIS DOCUMENT.
DRAWINGS ARE FOR GENERAL PURPOSES ONLY. NO MEASUREMENTS SHALL BE SCALED OFF DRAWINGS. ALL MEASUREMENTS SHALL BE VERIFIED IN FIELD.

ARCHITECT:



1656 Massachusetts Ave.
Lexington, MA 02420
Tel: 781-652-0114
connorarchitecture.com

REVISIONS

INTERIOR ELEVATIONS AND MILLWORK DETAILS

246 DEERING AVENUE
PORTLAND, ME 04102

GARBRECHT LAW CAFE
UNIVERSITY OF SOUTHERN MAINE

ISSUED:
JANUARY 19, 2017

DESCRIPTION:
100% CONSTRUCTION DOCUMENTS

A101
SHEET