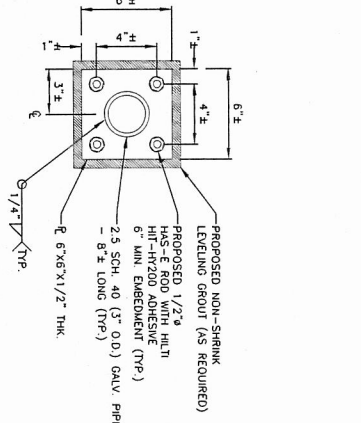
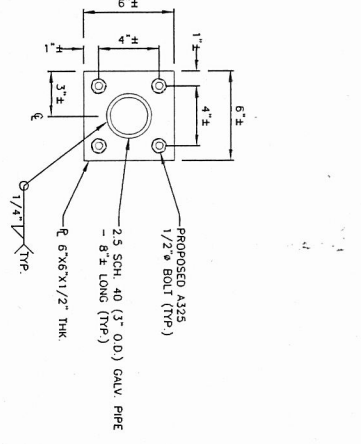


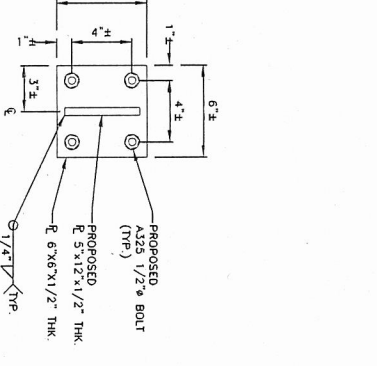
BOTTOM CONNECTION DETAIL
 22x34 SCALE: 3/4"=1'-0"
 11x17 SCALE: 1-1/2"=1'-0"



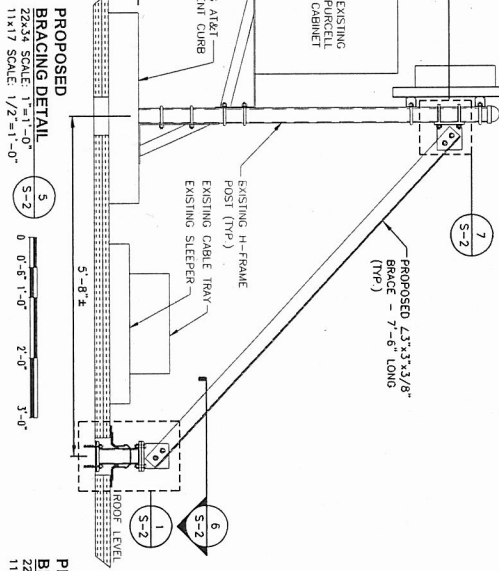
BOTTOM PLATE DETAIL
 22x34 SCALE: 3/4"=1'-0"
 11x17 SCALE: 1-1/2"=1'-0"



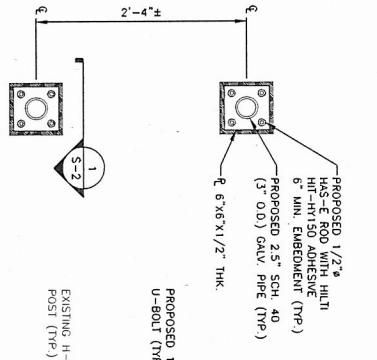
TOP PLATE DETAIL
 22x34 SCALE: 3/4"=1'-0"
 11x17 SCALE: 1-1/2"=1'-0"



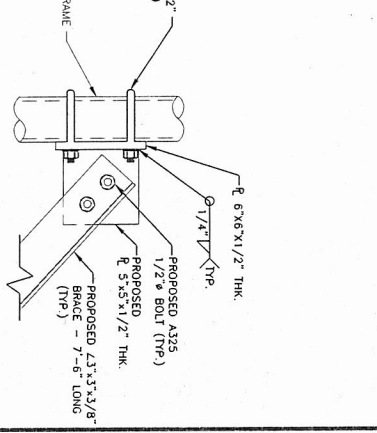
CONNECTION PLATE DETAIL
 22x34 SCALE: 3/4"=1'-0"
 11x17 SCALE: 1-1/2"=1'-0"



BRACING DETAIL
 22x34 SCALE: 1/2"=1'-0"
 11x17 SCALE: 1/2"=1'-0"



CONNECTION DETAIL
 22x34 SCALE: 1-1/2"=1'-0"
 11x17 SCALE: 3/4"=1'-0"



CONNECTION DETAIL
 22x34 SCALE: 1-1/2"=1'-0"
 11x17 SCALE: 3/4"=1'-0"

- NOTES:**
1. SHOP DRAWING ENGINEER SHALL VERIFY ALL DIMENSIONS AND MATERIALS BEFORE ORDERING/FABRICATING MATERIAL.
 2. ALL FLASHING SHALL BE COMPLETED BY A ROOFING CONTRACTOR. THE BUILDING OWNER & ROOFING MANUFACTURER SHALL VOID THE ROOF WARRANTY.
 3. ALL FLASHING SHALL BE DONE IN A WAY SO AS NOT TO IMPED THE FLOW OF ROOF WATER TO ROOF DRAINS.

NOTE:
 REFER TO STRUCTURAL ANALYSIS REPORT AND RECOMMENDATIONS BY: [Name] DATED: MARCH 02, 2016 FOR AN ANALYSIS OF THE CAPACITY OF THE EXISTING STRUCTURES TO SUPPORT TO COMMENCING CONSTRUCTION.

NOTE:
 REFER TO THE FINAL RF DATA SHEET FOR FINAL ANTENNA SETTINGS.

NOTE:
 PAINT ALL VISIBLE PROPOSED EQUIPMENT TO MATCH EXISTING SUBROUNDINGS.

Hudson Design Group
 140 SOUTH ST. 3RD FLOOR
 BOSTON, MA 02109
 TEL: (617) 552-5555
 FAX: (617) 552-5556

EMPIRE telecom
 16 ESQUIRE ROAD
 BILLERICA, MA 01862
 TEL: (978) 608-8400

SITE NUMBER: MES045
SITE NAME: PORTLAND USM
 246 GERING AVENUE
 PORTLAND, ME 04106
 CAMBERLAND COUNTY

at&t
 550 COCHITUATE ROAD
 FRAUMONK, MA 07011

NO.	DATE	ISSUED FOR	REVISIONS	ISSUED BY	DESIGNED BY	CHECKED BY	DATE	SCALE	AS SHOWN
1	10/20/16	ISSUED FOR CONSTRUCTION							
2	11/20/16	ISSUED FOR REVIEW							

AT&T
 STRUCTURAL MODIFICATION DESIGN
 (LITE AC 2016)
 DRAWING NUMBER: [Blank]
 SHEET NUMBER: [Blank]
 REV: [Blank]