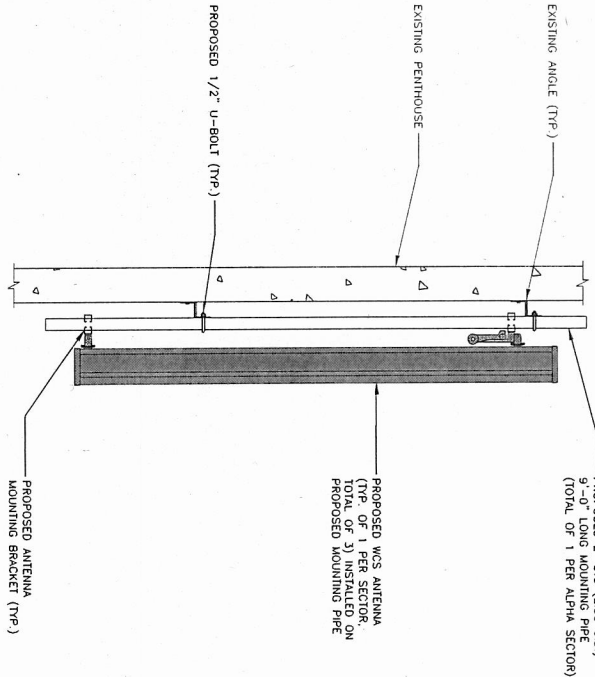
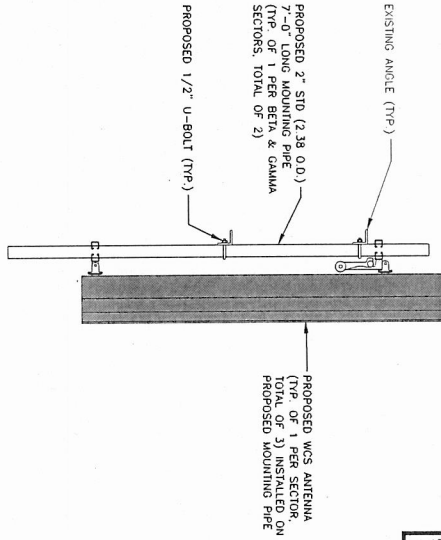


PROPOSED 2" STD (2.38 O.D.)
9'-0" LONG MOUNTING PIPE
(TOTAL OF 1 PER ALPHA SECTOR)



PROPOSED WCS ANTENNA
MOUNTING DETAIL @ ALPHA SECTOR
SCALE: N.T.S.

PROPOSED 2" STD (2.38 O.D.)
7'-0" LONG MOUNTING PIPE
(TOTAL OF 1 PER BETA & GAMMA SECTORS)



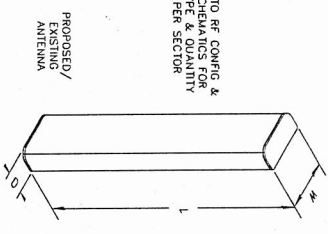
PROPOSED WCS ANTENNA MOUNTING
DETAIL @ BETA & GAMMA SECTOR
SCALE: N.T.S.

NOTE:
REFER TO STRUCTURAL ANALYSIS REPORT & RECOMMENDATIONS BY HUDSON DESIGN GROUP LLC, DATED MARCH 02, 2016 FOR AN ANTENNA MOUNTING DETAIL. THE EXISTING STRUCTURES TO SUPPORT THE PROPOSED EQUIPMENT TO SUPPORT TO COMMENCING CONSTRUCTION.

NOTE:
REFER TO THE FINAL RF DATA SHEET FOR FINAL ANTENNA SETTINGS.

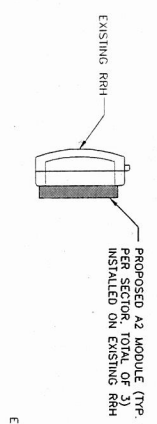
NOTE:
ALL VISIBLE PROPOSED EQUIPMENT TO MATCH EXISTING SUBROUNDRINGS

NOTES:
1. REFER TO RF CONFIG & SECTOR SCHEMATICS FOR MODEL, TYPE & QUANTITY REQUIRED PER SECTOR

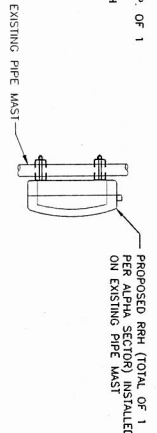


TECHNOLOGY	POSITION	ANTENNA MODEL	L	W	D
UNITS DB	1 (ALPHA)	7770	55.0"	11.0"	5.0"
LTE 700 BC	2 (ALPHA)	SBNH-1D6565C	96.4"	11.9"	7.1"
LTE AWS	3 (ALPHA)	HPA-65R-BU-H8	92.4"	14.8"	7.4"
LTE WCS/PCS/GSM 850	4 (ALPHA)	TPA-65R-LQUUU-H8	96.0"	14.4"	8.6"
LTE 700 BC	1 (BETA)	AM-X-CD-14-65-001-RE1	48.0"	11.8"	5.9"
LTE AWS	2 (BETA)	SBNH-1D65A	55.0"	11.9"	7.1"
LTE WCS/PCS/GSM 850	3 (BETA & GAMMA)	Q568512-3	72.0"	12.0"	9.6"
UNITS DB	4 (BETA & GAMMA)	7770	55.0"	11.0"	5.0"
LTE 700 BC	1 (GAMMA)	AM-X-CD-16-65-001-RE1	72.0"	11.8"	5.9"
LTE AWS	2 (GAMMA)	HPA-65R-BU-H8	72.0"	14.8"	9.0"

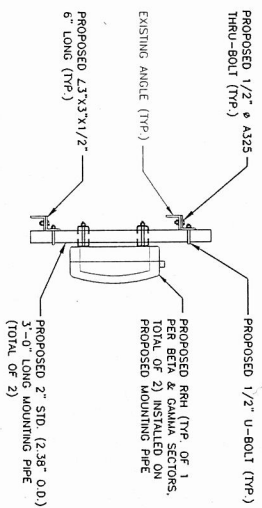
ANTENNA DETAIL
SCALE: N.T.S.



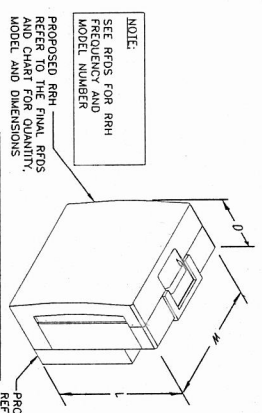
PROPOSED A2 MODULE
MOUNTING DETAIL
SCALE: N.T.S.



PROPOSED RRH MOUNTING
DETAIL @ ALPHA SECTOR
SCALE: N.T.S.



PROPOSED RRH MOUNTING
DETAIL @ BETA & GAMMA SECTOR
SCALE: N.T.S.



PROPOSED A2
MOUNTING DETAIL
SCALE: N.T.S.

Hudson Design Group
1600 GORHAM STREET
N. ANDOVER, MA 01854
TEL: (978) 525-5533
FAX: (978) 525-5533

EMPIRE telecom
16 ESQUIRE ROAD
BILLERICA, MA 01882
TEL: (978) 608-8400

SITE NUMBER: MEO545
246 ODERING AVENUE
CAMBERLAND COUNTY

at&t
550 COCHITUATE ROAD
FRAMINGHAM, MA 01701

1	03/02/16	ISSUED FOR CONSTRUCTION
2	07/20/16	ISSUED FOR REVIEW
3	08/02/16	REVISION BR. NO.

DATE	BY	CHKD BY
08/02/16	BR	BR

NO.	DATE	DESCRIPTION
1	08/02/16	ISSUED FOR CONSTRUCTION

REV	DATE	DESCRIPTION
1	08/02/16	ISSUED FOR CONSTRUCTION