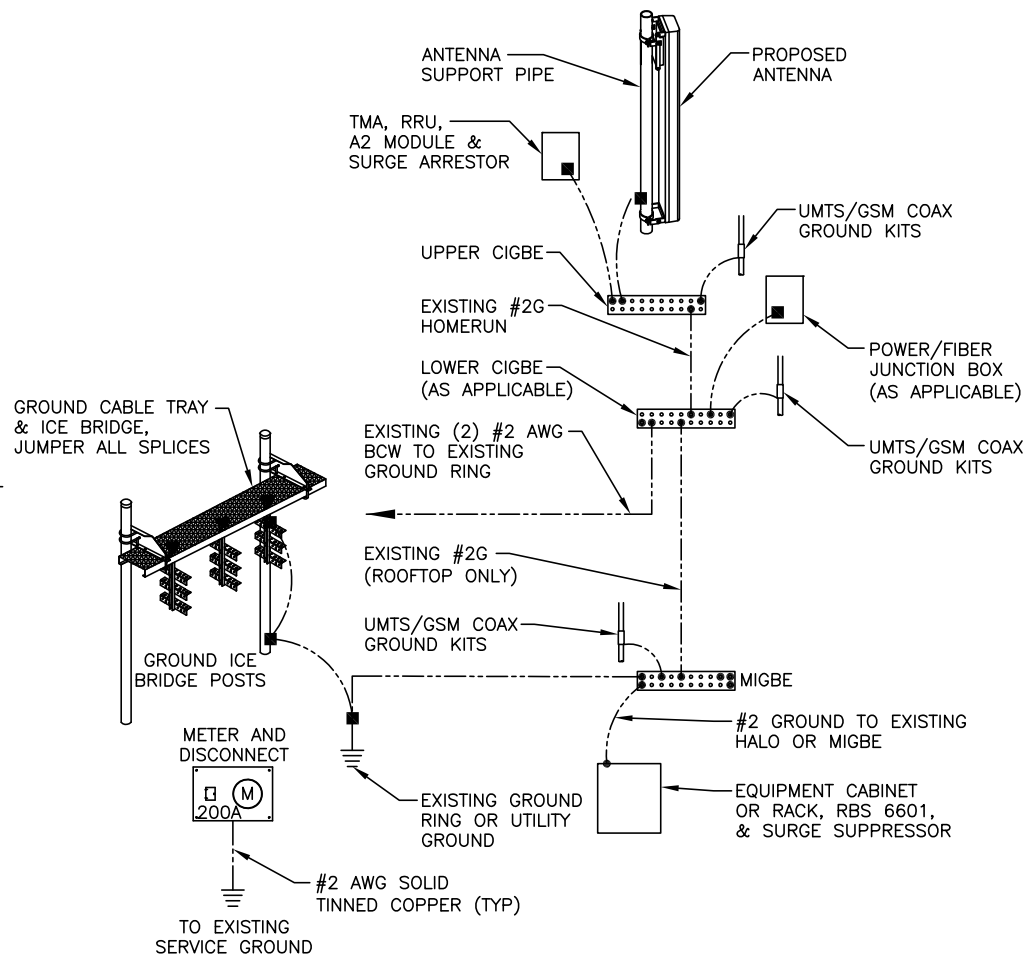
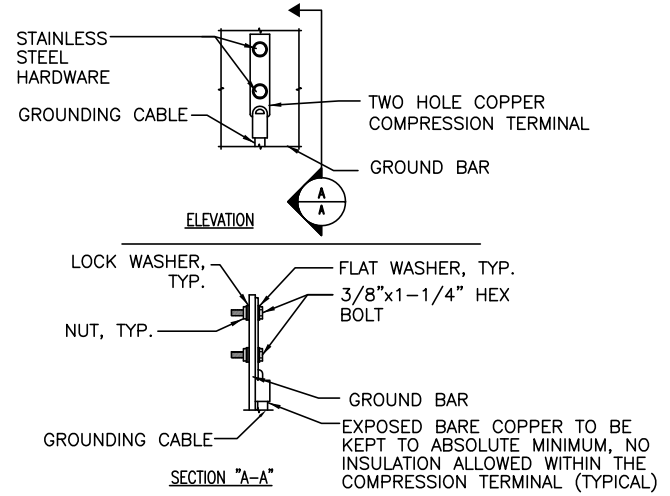


GROUND WIRE TO GROUND BAR CONNECTION DETAIL
SCALE: N.T.S. 1 G-1

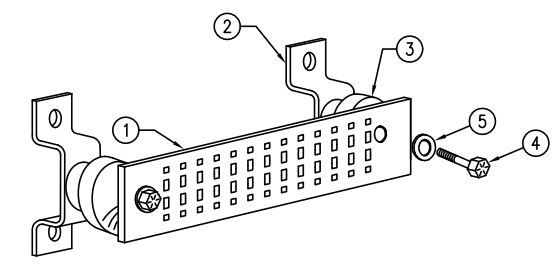


GROUNDING RISER DIAGRAM
SCALE: N.T.S. 2 G-1



NOTE:
1. "DOUBLING UP" OR "STACKING" OF CONNECTION IS NOT PERMITTED.
2. OXIDE INHIBITING COMPOUND TO BE USED AT ALL LOCATIONS.
3. CADWELD DOWNLEADS FROM UPPER EGB, LOWER EGB, AND MGB.

TYPICAL GROUND BAR CONNECTION DETAIL
SCALE: N.T.S. 3 G-1



GROUND BAR - DETAIL
SCALE: N.T.S. 4 G-1

EACH GROUND CONDUCTOR TERMINATING ON ANY GROUND BAR SHALL HAVE AN IDENTIFICATION TAG ATTACHED AT EACH END THAT WILL IDENTIFY ITS ORIGIN AND DESTINATION.

SECTION "P" - SURGE PRODUCERS

- CABLE ENTRY PORTS (HATCH PLATES) (#2)
- GENERATOR FRAMEWORK (IF AVAILABLE) (#2)
- TELCO GROUND BAR
- COMMERCIAL POWER COMMON NEUTRAL/GROUND BOND (#2)
- +24V POWER SUPPLY RETURN BAR (#2)
- 48V POWER SUPPLY RETURN BAR (#2)
- RECTIFIER FRAMES.

SECTION "A" - SURGE ABSORBERS

- INTERIOR GROUND RING (#2)
- EXTERNAL EARTH GROUND FIELD (BURIED GROUND RING) (#2)
- METALLIC COLD WATER PIPE (IF AVAILABLE) (#2)
- BUILDING STEEL (IF AVAILABLE) (#2)

Hudson Design Group, Inc.
1600 OSGOOD STREET
BUILDING 20 NORTH, SUITE 3090
N. ANDOVER, MA 01845
TEL: (978) 557-5553
FAX: (978) 336-5586

EMPIRE telecom
16 ESQUIRE ROAD
BILLERICA, MA 01862
TEL: (978) 608-8400

SITE NUMBER: ME5045
SITE NAME: PORTLAND USM
246 DEERING AVENUE
PORTLAND, ME 04102
CUMBERLAND COUNTY

at&t
550 COCHITUATE ROAD
FRAMINGHAM, MA 01701

| | | | | | |
|-----------------|----------|-------------------|--------------|-----|-------|
| 0 | 12/12/14 | ISSUED FOR REVIEW | MR | HC | DC |
| NO. | DATE | REVISIONS | BY | CHK | APP'D |
| SCALE: AS SHOWN | | DESIGNED BY: HC | DRAWN BY: MR | | |

| | | |
|------------------------------------|----------------|-----|
| AT&T | | |
| GROUNDING DETAILS (LTE-3C 2015) | | |
| JOB NUMBER | DRAWING NUMBER | REV |
| 5045.00 | G-1 | 0 |