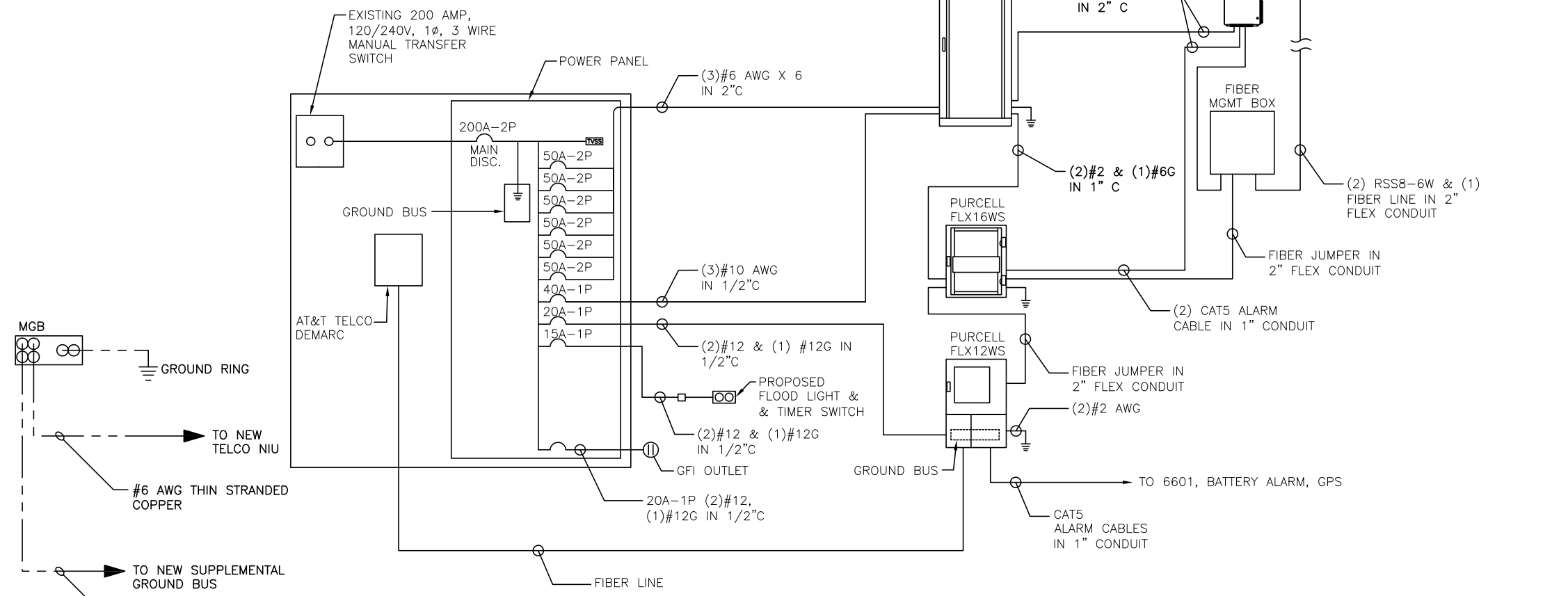


**ALARM TERMINAL CABINET "TC" WIRING DETAIL**  
SCALE: N.T.S.

- ALARM TERMINAL NOTES:**
1. TERMINAL STRIP SHALL BE SQUARE 'D' 9080GP620 WITH MOUNTING CHANNELS. EACH STRIP SHALL BE 20 CONTACT BLOCK TYPE.
  2. MINIMUM #14 THW CONDUCTOR SIZE FOR ALARM WIRING.
  3. MOUNT TERMINAL STRIP INTO 12"x12"x6" NEMA 1 HINGED DOOR ENCLOSURE McNISTRY #30-12126LP WITH BACK PANEL.
  4. ALARM CONTACTS SHALL BE OPEN ON ALARM.



**ELECTRICAL SCHEMATIC**  
SCALE: N.T.S.

0	12/12/14	ISSUED FOR REVIEW	MR	HC	DC
NO.	DATE	REVISIONS	BY	CHK	APP'D
SCALE: AS SHOWN		DESIGNED BY: HC	DRAWN BY: MR		

<b>AT&amp;T</b>		
ELECTRICAL ONE-LINE DIAGRAM (LTE-3C 2015)		
JOB NUMBER	DRAWING NUMBER	REV
5045.00	E-1	0