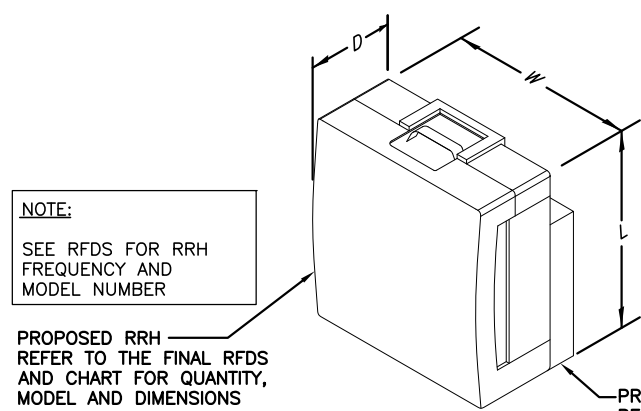


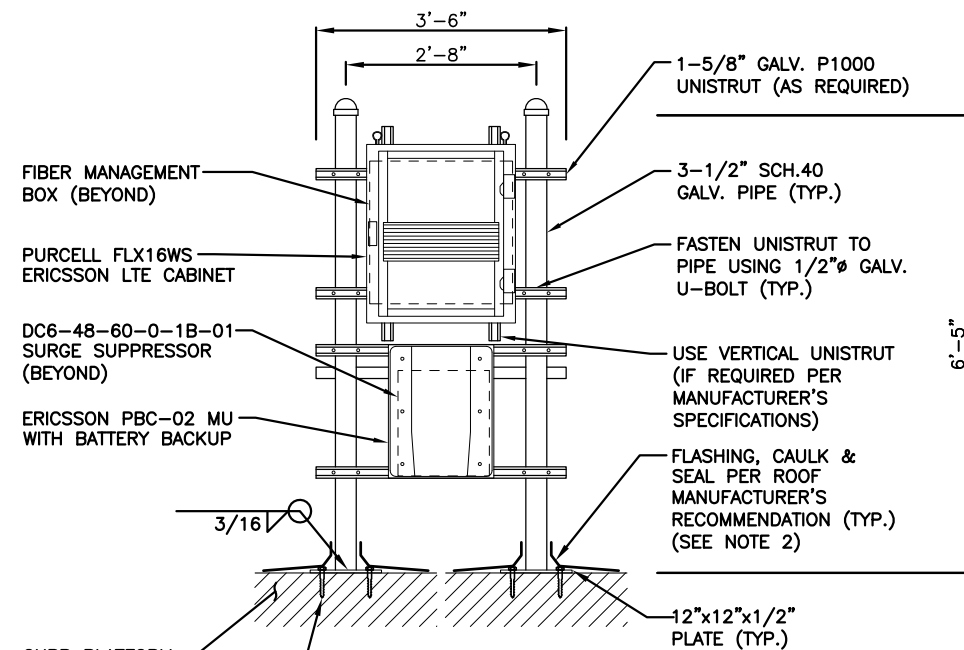
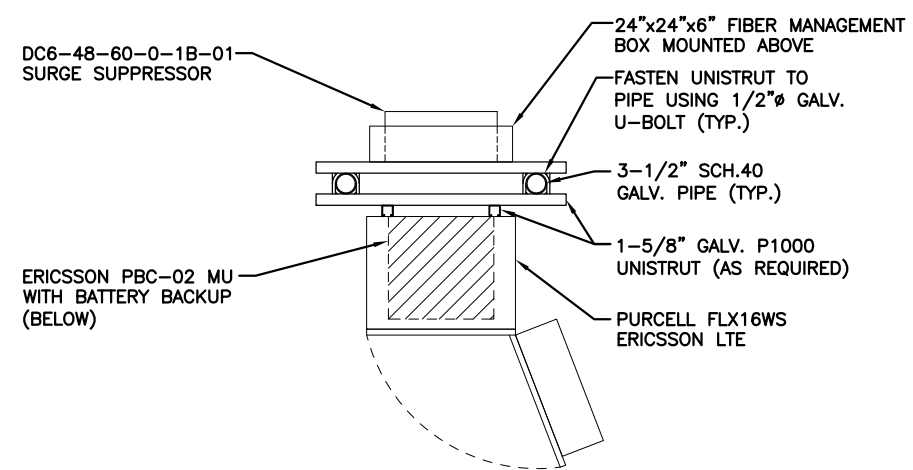
DC SURGE SUPPRESSOR DETAIL 1
SCALE: N.T.S. A-4



	L	W	D
RRUS - 11	19.7"	17.0"	7.2"
RRUS - 12	20.4"	18.5"	7.5"
RRUS - 32	26.7"	12.1"	6.7"
RRUS - E2	20"	20.4"	9.5"
LTE - A2	16.4"	15.2"	3.4"

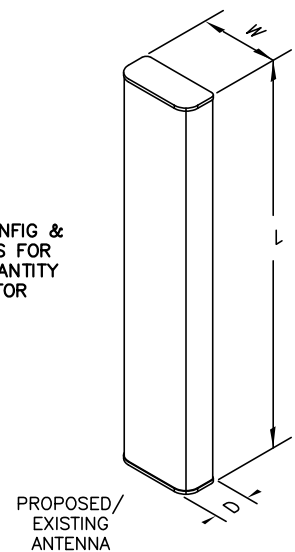
NOTE:
MOUNT PER MANUFACTURER'S
SPECIFICATIONS.

RRH DETAIL 2
SCALE: N.T.S. A-4



NOTES:
1. MOUNT PROPOSED EQUIPMENT PER
MANUFACTURER'S SPECIFICATIONS
2. ALL ROOFING WORK AND PATCHING REQUIRED
FOR THE EQUIPMENT PLATFORM, BALLAST
MOUNTS, AND CABLE TRAY RUN SHALL BE
COORDINATED WITH THE LANDLORD'S ROOFER TO
ELIMINATE VOIDING OF THE ROOF WARRANTY.

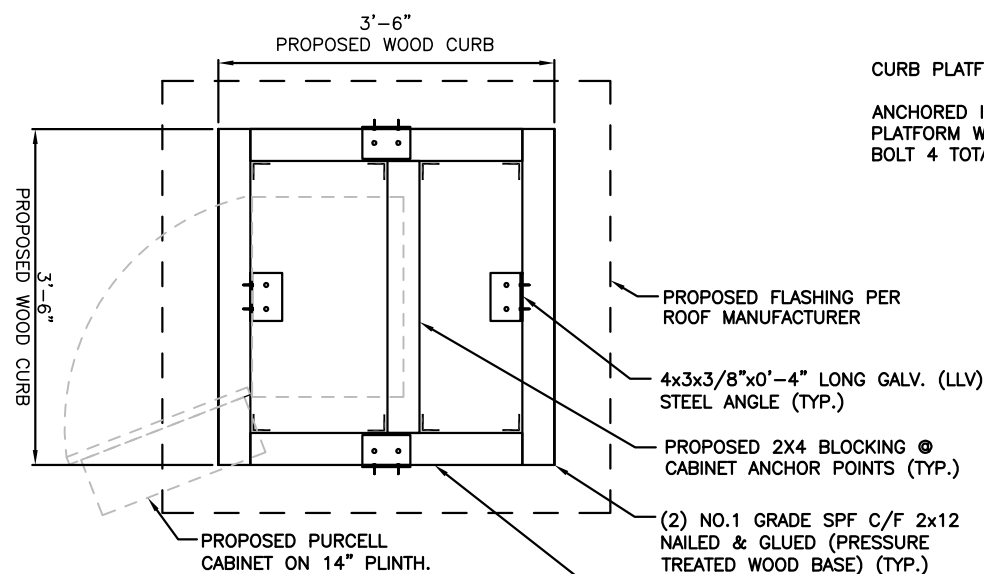
PROPOSED EQUIPMENT MOUNTING DETAIL 3
SCALE: N.T.S. A-4



NOTES:
1. REFER TO RF CONFIG &
SECTOR SCHEMATICS FOR
MODEL, TYPE & QUANTITY
REQUIRED PER SECTOR

TECHNOLOGY	POSITION	ANTENNA MODEL	L	W	D
UMTS (ALPHA)	1	742-264	51.8"	10.3"	5.5"
LTE 3C (ALPHA)	2	OPA-65R-LCUU-H8	92.7"	14.4"	7.0"
LTE 3C (ALPHA)	3	HPA-65R-BUU-H8	92.4"	14.8"	7.4"
LTE 3C (ALPHA)	4	OPA-65R-LCUU-H8	92.7"	14.4"	7.0"
UMTS (BETA)	1	742-264	51.8"	10.3"	5.5"
LTE 3C (BETA)	2	OPA-65R-LCUU-H4	48.0"	14.4"	7.3"
LTE 3C (BETA)	3	HPA-65R-BUU-H4	48.0"	14.8"	9.0"
LTE 3C (BETA)	4	OPA-65R-LCUU-H4	48.0"	14.4"	7.3"
UMTS (GAMMA)	1	742-264	51.8"	10.3"	5.5"
LTE 3C (GAMMA)	2	OPA-65R-LCUU-H6	72.0"	14.8"	7.4"
LTE 3C (GAMMA)	3	HPA-65R-BUU-H6	72.0"	14.8"	9.0"
LTE 3C (GAMMA)	4	OPA-65R-LCUU-H6	72.0"	14.8"	7.4"

ANTENNA DETAIL 4
SCALE: N.T.S. A-3



WOOD CURB DETAIL 5
SCALE: N.T.S. A-4

NOTES:
1. SUBCONTRACTOR SHALL LEVEL
CURB AS NEEDED.
2. SUBCONTRACTOR SHALL
COORDINATE ROOFING WORK
WITH BUILDING VENDOR SO
NOT TO VOID ROOF WARRANTY.
3. SUBCONTRACTOR TO FASTEN
EQUIPMENT TO P.T. WOOD
CURB PER MANUFACTURER'S
SPECIFICATION.

NOTE:
AN ANALYSIS FOR THE CAPACITY
OF THE EXISTING STRUCTURES
TO SUPPORT THE PROPOSED
EQUIPMENT SHALL BE DETERMINED
PRIOR TO CONSTRUCTION.

NOTE:
REFER TO THE FINAL RF DATA
SHEET FOR FINAL ANTENNA
SETTINGS.

NOTE:
PAINT ALL VISIBLE PROPOSED
EQUIPMENT TO MATCH EXISTING
SURROUNDINGS