

SHEET NO.	DESCRIPTION	DATE	REV. NO.
C-1	NORTHWEST BUILDING ELEVATION	9/30/14	0
C-2	ROOFTOP PLAN	9/30/14	0
C-3	EQUIPMENT LAYOUT PLAN AND ELEVATIONS	9/30/14	0
C-4	ANTENNA MOUNTING DETAILS	9/30/14	0
E-1	ONE-LINE DIAGRAM	9/30/14	0

SHEET INDEX

PLANS PREPARED FOR:



U S Cellular
We connect with you
10 Corporate Drive, Suite 210, Bedford, NH 03110

PROJECT INFORMATION

853488 - OAKDALE
246 DEERING AVE
PORTLAND, ME 04101
(CUMBERLAND COUNTY)

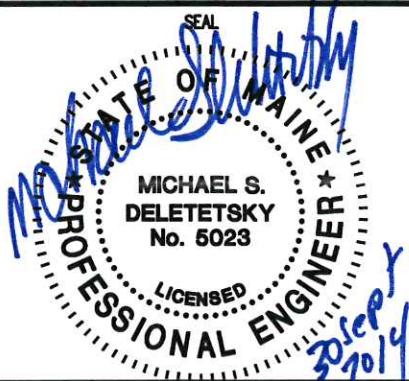
PLANS PREPARED BY:



511 Congress Street Suite 200, Portland ME 04101
P: (207) 775-5401 F: (207) 772-4762 www.amec.com

PROJECT COORDINATION & MANAGEMENT:

KJK Wireless, LLC
127 Ridge Road, Nashua, NH 03062
Phone: (603) 888-8974



REV	DATE	ISSUED FOR
△	9/30/14	ISSUED FOR CONSTRUCTION

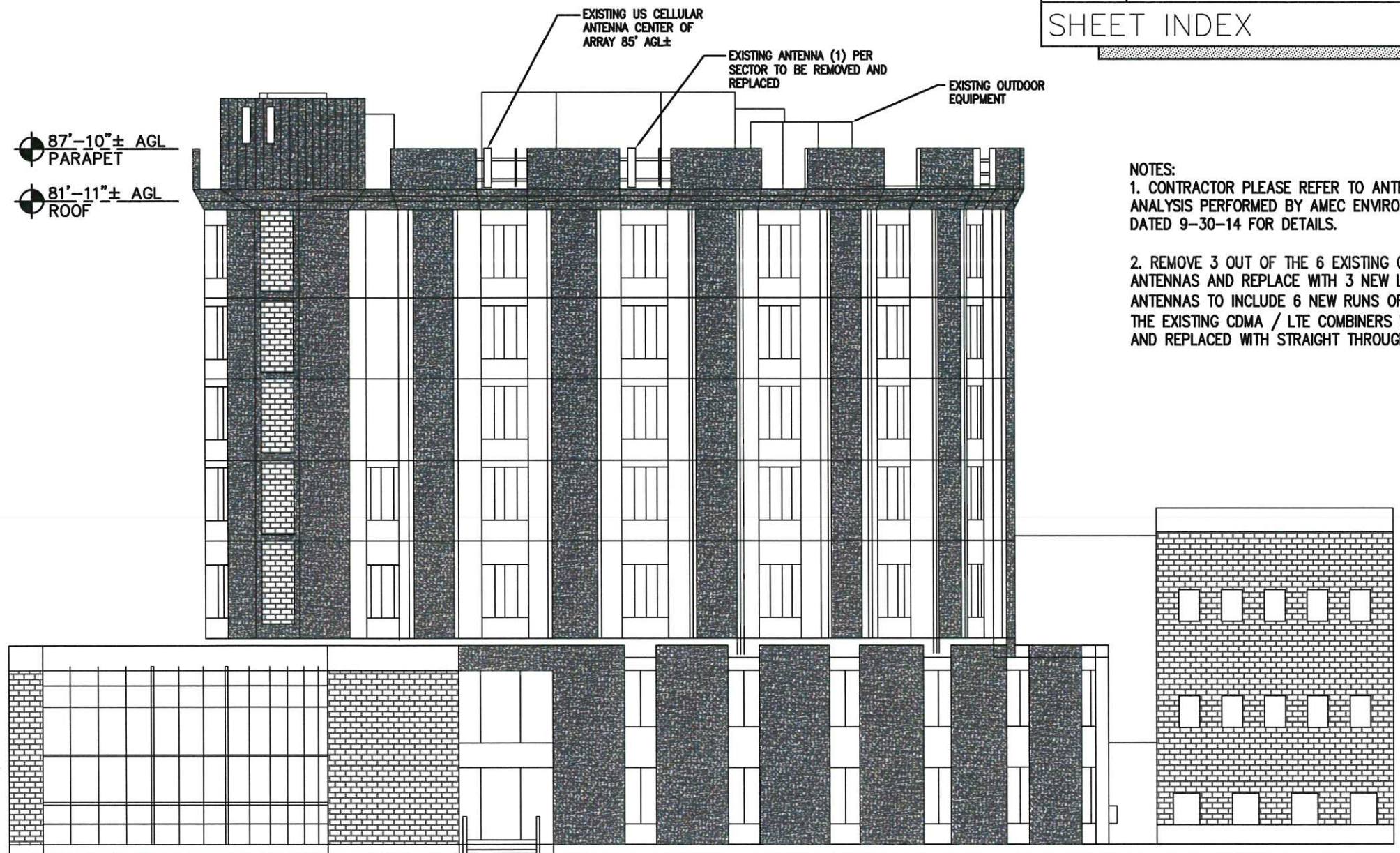
PROJECT NO: 3618148348

DRAWN BY: CBM

RELEASED BY: MSD

SHEET TITLE
NORTHWEST BUILDING ELEVATION

SHEET NUMBER	REVISION:
C-1	0



- NOTES:
1. CONTRACTOR PLEASE REFER TO ANTENNA MAPPING AND STRUCTURAL ANALYSIS PERFORMED BY AMEC ENVIRONMENT & INFRASTRUCTURE, INC., DATED 9-30-14 FOR DETAILS.
 2. REMOVE 3 OUT OF THE 6 EXISTING CDMA / LTE ROOFTOP CROSS-POLE ANTENNAS AND REPLACE WITH 3 NEW LTE ONLY CROSS-POLE RET ANTENNAS TO INCLUDE 6 NEW RUNS OF 1-5/8" COAX. ADDITIONALLY THE EXISTING CDMA / LTE COMBINERS WILL BE REMOVED FROM SERVICE AND REPLACED WITH STRAIGHT THROUGH COAX JUMPERS.