

37 DEANE STREET  
NEW CONSTRUCTION | SINGLE-FAMILY HOUSE

OWNER  
Alicia Gazdik  
Passive Works, LLC  
559 Willow Street  
South Portland, ME 04106  
E-MAIL: juliangazdik@gmail.com  
PHONE: 972.263.6005



DEXTRIOUS  
CREATIVE

PORTLAND, ME 04102  
TRACIE REED, ARCHITECT  
1240B, W. A. LEE, A.P. BLDG.  
traciereed@dextrouscreative.com  
207.493.0459 (cell)

PROJECT TEAM

CIVIL ENGINEERING  
Rosa A. Gaudin, P.E., M.E., N.E. VT  
CPESC, CPSWQ, CESSWI  
Engineering Assistance & Design, Inc. (E&AD)  
17 North Road  
Yamouth, Maine 04096  
Phone: 207-846-0839  
Mobile: 207-858-1063  
r.gaudin@eandad.com

STRUCTURAL ENGINEER  
Larry Wietroski, P.E.  
Engineering Design Professionals  
P.O. Box 575  
Frogort, Me 04032  
T: 207-663-5000  
LW@larryw.com

GEOTECHNICAL ENGINEER  
Steve Marcotte, CG, PG, LSE  
Seave & Major Engineers, Inc.  
4 Shattuck Rd  
Cumberland Center, ME 04021  
T: 207-829-5016  
C: 207-859-9620  
sm@seame.com

LANDSCAPE ARCHITECT  
Tony Cowles  
Maine Licensed Landscape Architect  
Cowles Studio Landscape Architecture  
T: (207) 415-4332  
tony@cowles-studio.com

GENERAL CONTRACTOR  
Josh Wojcik  
Upright Frameworks  
School St, Wilton, ME 04294  
T: (207) 749-3055  
jwojck@uprightframeworks.com

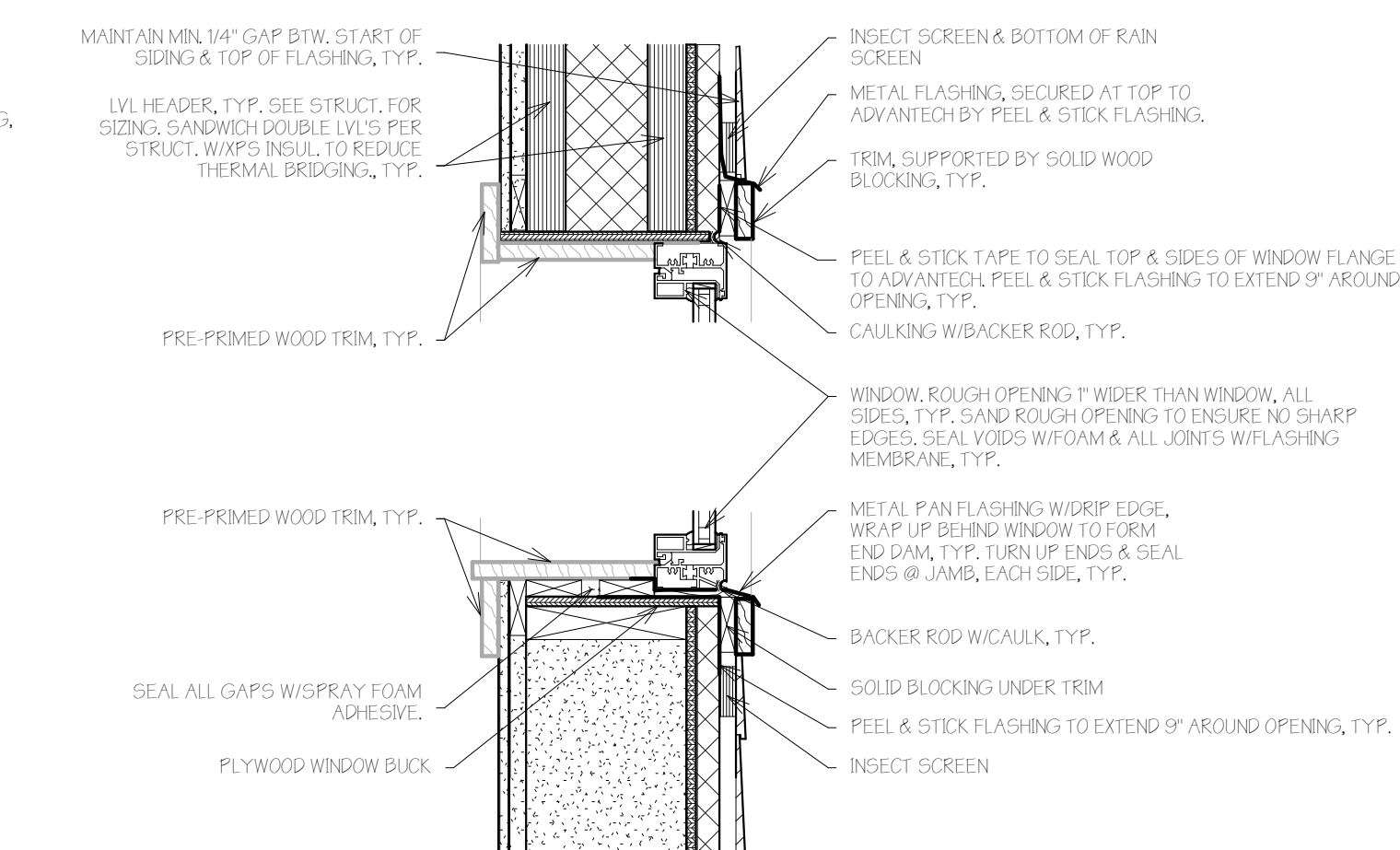
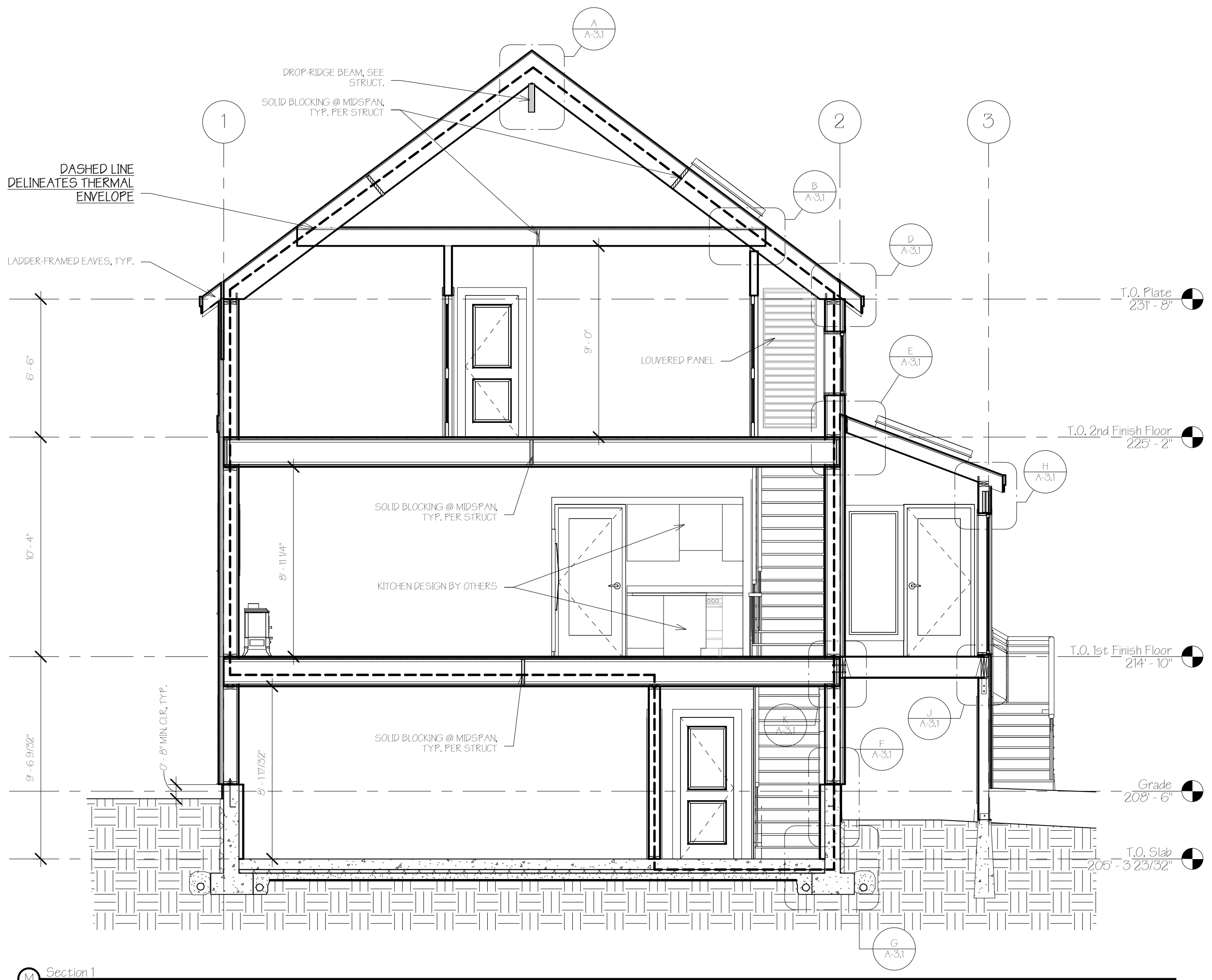
No.	Description	Date

SECTIONS

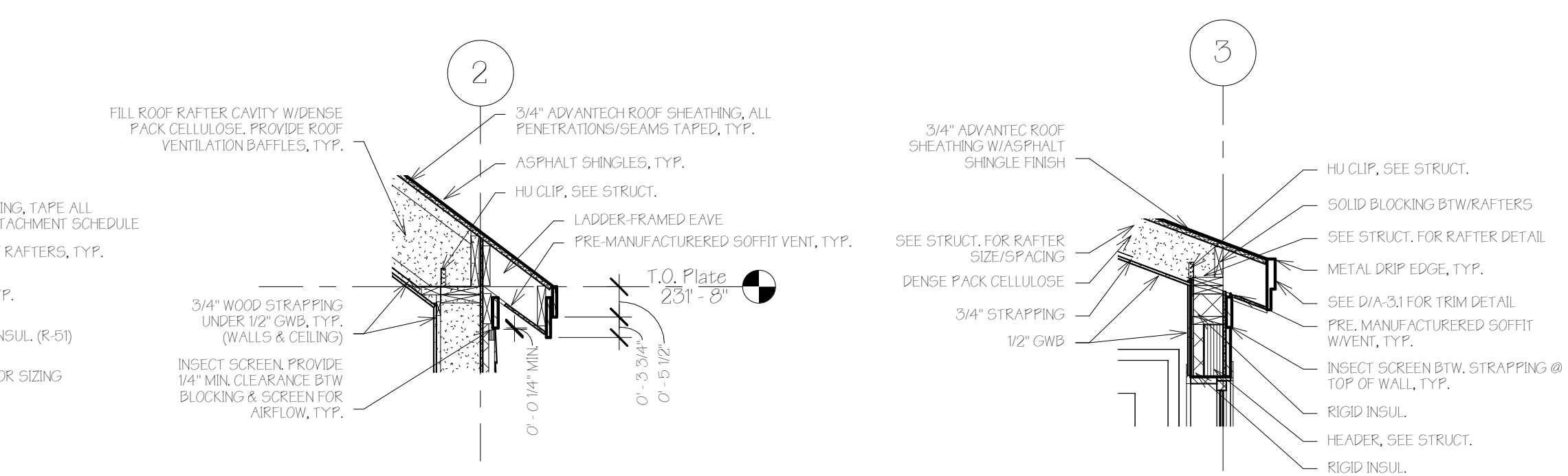
Project number 16-16\_73 Cumberland  
Date 06.02.16  
Drawn by T.J.R.  
Checked by T.J.R.

A-3.1

Scale As indicated



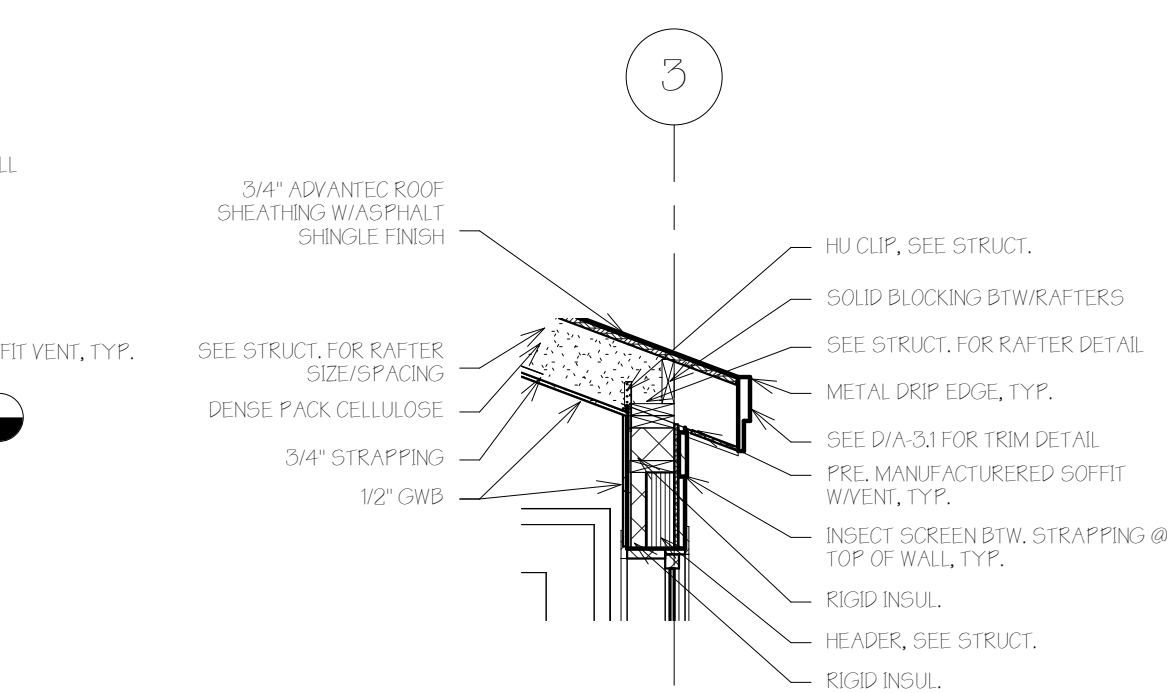
N TYP. WINDOW HEAD & SILL DETAIL  
1 1/2" = 1'-0"



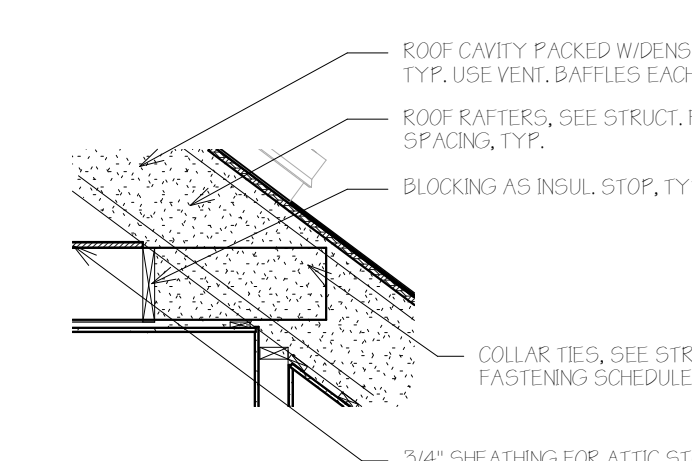
A RIDGE DETAIL  
1/2" = 1'-0"



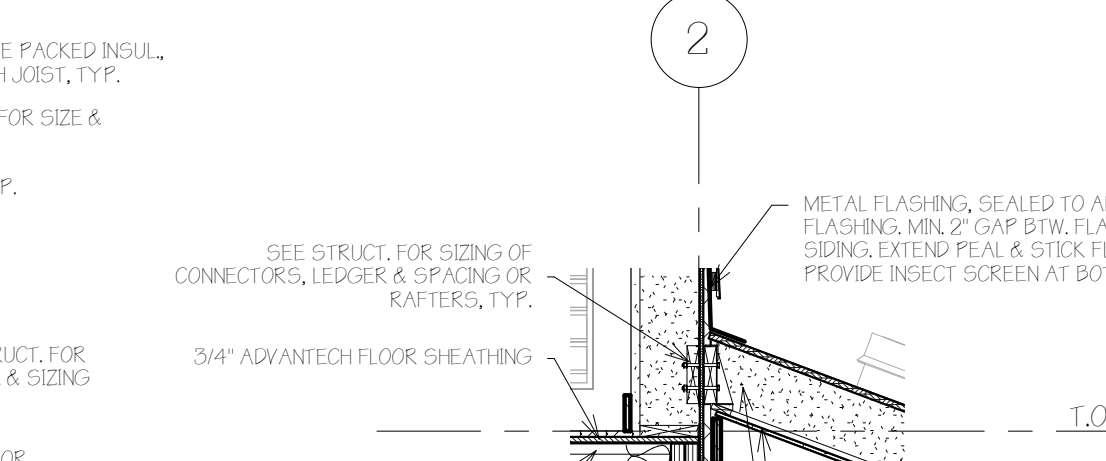
D TYP. EAVE DETAIL  
1/2" = 1'-0"



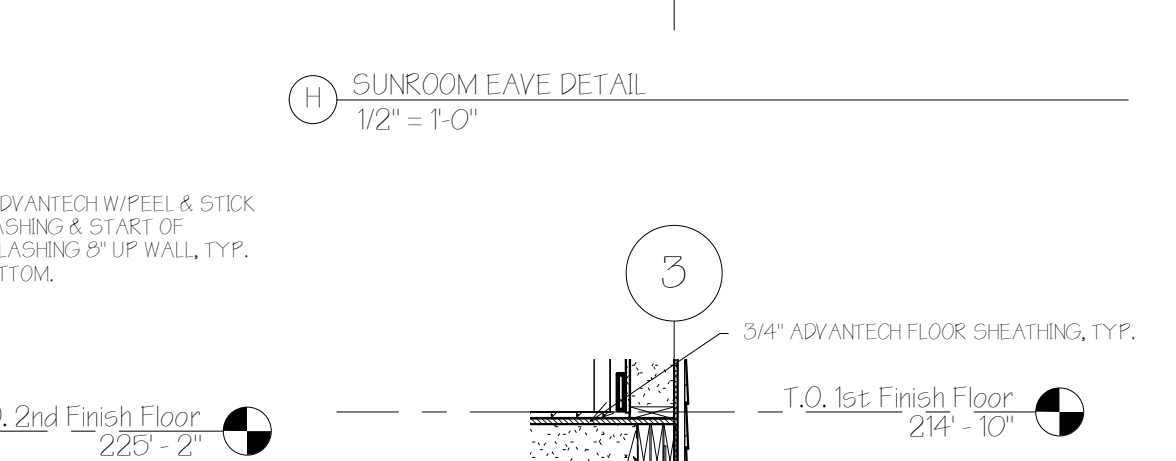
H SUNROOM EAVE DETAIL  
1/2" = 1'-0"



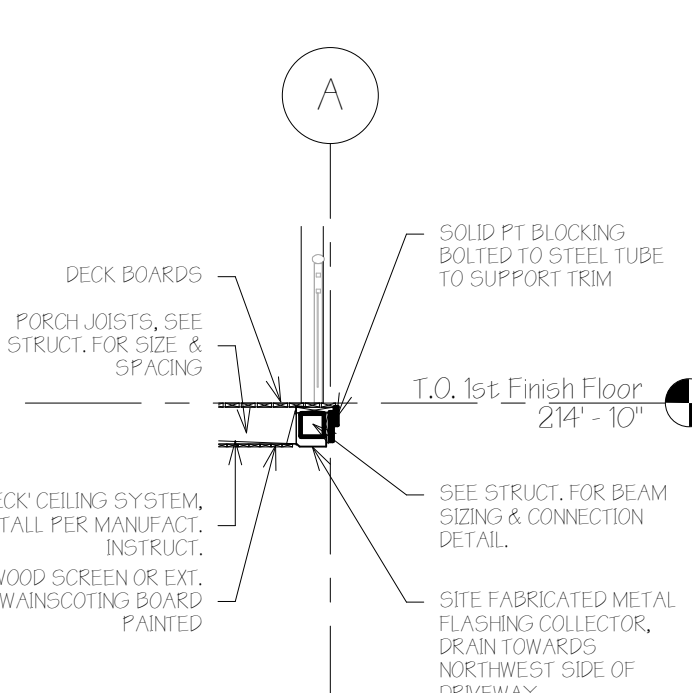
B COLLAR TIE/ATTIC FLOOR DETAIL  
1/2" = 1'-0"



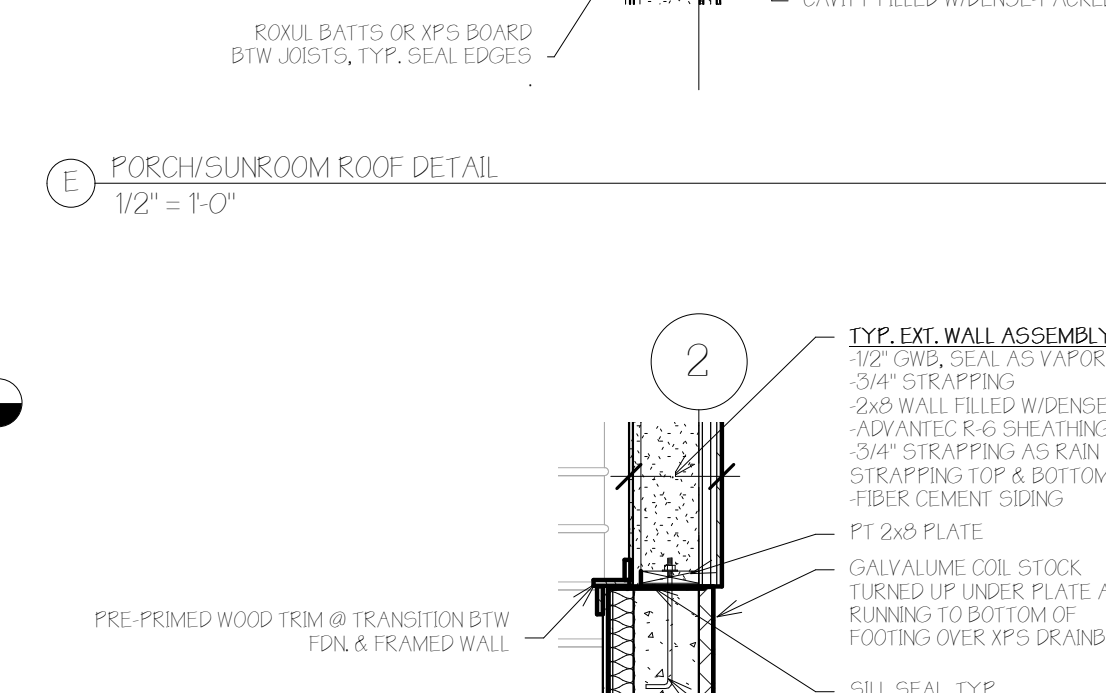
E PORCH/SUNROOM ROOF DETAIL  
1/2" = 1'-0"



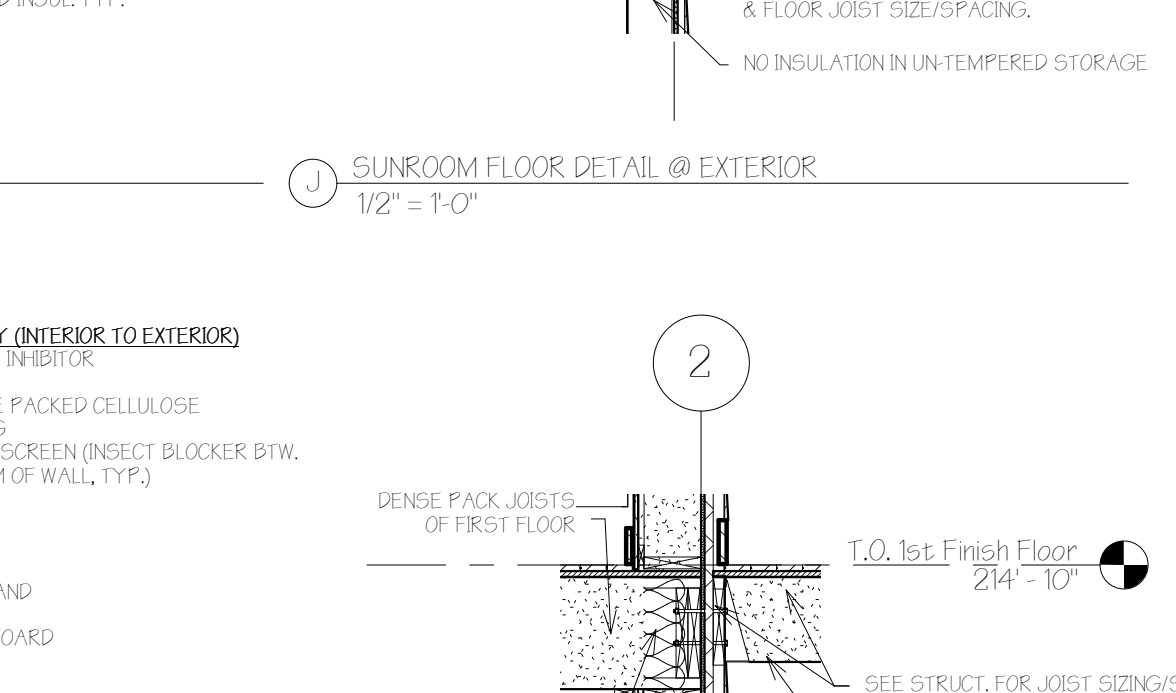
J SUNROOM FLOOR DETAIL @ EXTERIOR  
1/2" = 1'-0"



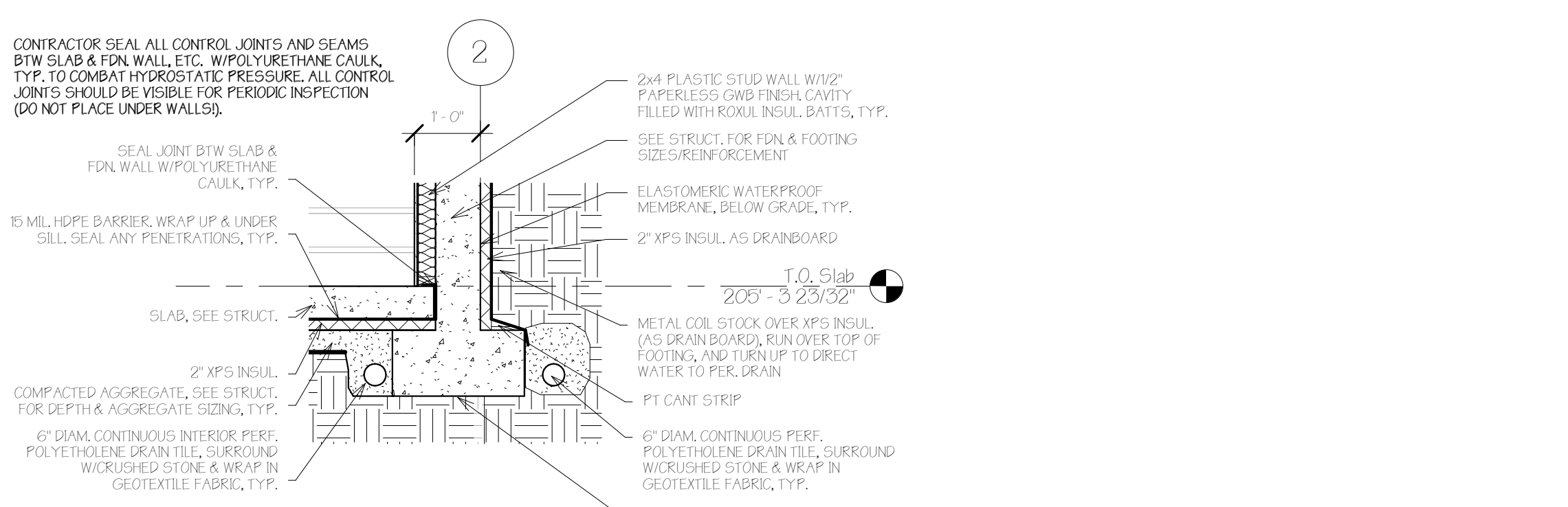
C GARAGE OPENING SUPPORT  
1/4" = 1'-0"



F TYP. SILL DETAIL  
1/2" = 1'-0"



K SUNROOM FLOOR DETAIL @ HOUSE  
1/2" = 1'-0"



G FOOTING DETAIL  
1/2" = 1'-0"

CONTRACTOR SEAL ALL CONTROL JOINTS AND SEAMS BTW SLAB & FDN WALL, ETC. WITH POLYURETHANE CAULK, TYP. TO COMBAT HYDROSTATIC PRESSURE. ALL CONTROL JOINTS SHOULD BE VISIBLE FOR PERIODIC INSPECTION (DO NOT PLACE UNDER WALLS).

SEAL JOINT BTW SLAB & FDN WALL WITH POLYURETHANE CAULK, TYP.

15 MIL HDPE BARRIER, WRAP UP & UNDER SILL. SEAL ANY PENETRATIONS, TYP.

SLAB, SEE STRUCT.

2" XPS INSUL. COMPACTED AGGREGATE, SEE STRUCT. FOR DEPTH & AGGREGATE SIZES, TYP.

6" DRAM. CONTINUOUS INTERIOR PERE. POLYETHYLENE DRAIN TILE, SURROUND W/CRUSHED STONE & WRAP IN GEOTEXTILE FABRIC, TYP.

2x4 PLASTIC STUD WALL W/1/2" PAPERLESS GWB FINISH CAVITY FILLED WITH ROCKWOOL INSUL. BATTIS, TYP.

SEE STRUCT. FOR FDN & FOOTING SIZES/REINFORCEMENT.

ELASTOMERIC WATERPROOF MEMBRANE, BELOW GRADE, TYP.

2" XPS INSUL. AS DRAINBOARD.

METAL COIL STOCK OVER XPS INSUL. (AS DRAIN BOARD), RUN OVER TOP OF FOOTING, AND TURN UP TO DRECT WATER TO PER. DRAIN.

PT CANT STRIP.

6" DRAM. CONTINUOUS PERE. POLYETHYLENE DRAIN TILE, SURROUND W/CRUSHED STONE & WRAP IN GEOTEXTILE FABRIC, TYP.

UNDISTURBED SOIL.

EDGE VENT  
ASPHALT SHINGLES  
3/4" ADVANTECH ROOF SHEATHING, TAPE ALL SEAMS. SEE STRUCT. FOR ATTACHMENT SCHEDULE.  
SOLID BLOCKING & RIDGE BTW RAFTERS, TYP.  
ROOF VENTILATION BAFFLE, TYP.  
1/2" DENSE PACK CELLULOSE INSUL. (R-5)  
ROOF JOISTS SEE STRUCT. FOR SIZING  
SEE STRUCT.

FILL ROOF RAFTER CAVITY W/DENSE PACK CELLULOSE. PROVIDE ROOF VENTILATION BAFFLES, TYP.

3/4" ADVANTECH ROOF SHEATHING, ALL PENETRATIONS/SEAMS TAPED, TYP.  
ASPHALT SHINGLES, TYP.  
HU CLIP, SEE STRUCT.  
LADDER-FRAMED EAVE  
PRE-MANUFACTURED SOFFIT VENT, TYP.  
T.O. Plate  
231' - 8"

3/4" WOOD STRAPPING UNDER 1/2" GWB, TYP. (WALLS & CEILING)  
INSECT SCREEN, PROVIDE 1/4" MIN. CLEARANCE BTW BLOCKING & SCREEN FOR AIRFLOW, TYP.

3/4" ADVANTECH ROOF SHEATHING W/ASPHALT SHINGLE FINISH  
HU CLIP, SEE STRUCT.  
SOLID BLOCKING BTW RAFTERS  
SEE STRUCT. FOR RAFTER DETAIL  
METAL DRIP EDGE, TYP.  
SEE DIA.'S FOR TRIM DETAIL  
PRE-MANUFACTURED SOFFIT VENT, TYP.  
INSECT SCREEN BTW STRAPPING @ TOP OF WALL, TYP.  
RIGID INSUL.  
HEADER, SEE STRUCT.  
RIGID INSUL.

SEE STRUCT. FOR RAFTER SIZE/SPACING  
DENSE PACK CELLULOSE  
3/4" STRAPPING  
1/2" GWB  
RIGID INSUL. IN UNTEMPERED STORAGE

3/4" ADVANTECH FLOOR SHEATHING, TYP.  
T.O. 2nd Finish Floor  
225' - 2"

FLOOR JOIST & RM JOIST PER STRUCT.  
3/4" STRAPPING UNDER GWB, TYP.  
CAVITY FILLED W/DENSE-PACKED INSUL. TYP.

3/4" STRAPPING  
ROKUL BATTIS OR XPS BOARD BTW JOISTS, TYP. SEAL EDGES

NO INSULATION IN UNTEMPERED STORAGE

SEE STRUCT. FOR POST SIZING, CONNECTORS, & FLOOR JOIST SIZE/SPACING.

3/4" ADVANTECH FLOOR SHEATHING, TYP.  
T.O. 1st Finish Floor  
214' - 10"

INSUL. WHAT TYPE?

SEE STRUCT. FOR POST SIZING, CONNECTORS, & FLOOR JOIST SIZE/SPACING.

NO INSULATION IN UNTEMPERED STORAGE

DECK BOARDS  
PORCH JOISTS, SEE STRUCT. FOR SIZE & SPACING  
T.O. 1st Finish Floor  
214' - 10"

SOLID PT. BLOCKING BOLTED TO STEEL TUBE TO SUPPORT TRIM

SEE STRUCT. FOR BEAM SIZING & CONNECTION DETAIL.

1/3" WOOD SCREEN OR EXT. GRADE WANNING BOARD PAINTED

SITE FABRICATED METAL FLASHING COLLECTOR, DRAIN TOWARDS NORTHWEST SIDE OF DRIVEWAY

UNDERDECK CEILING SYSTEM, INSTALL PER MANUFACT. INSTRUCT.

PRE-PRIMED WOOD TRIM @ TRANSITION BTW FDN & FRAMED WALL

1/2" PAPERLESS GWB, TYP. FOR FDN ASSEMBLY

PT 2x4 PLATE  
GALVANEUM COIL STOCK TURNED UP UNDER PLATE AND RUNNING TO BOTTOM OF FOOTING OVER XPS DRAINBOARD  
SILL SEAL, TYP.  
XPS INSUL. AS DRAINBOARD, SEE DIA.'S  
ANCHOR BOLT-SEE STRUCT.  
ELASTOMERIC WATERPROOF MEMBRANE

2x4 PLASTIC STUD WALL W/1/2" PAPERLESS GWB FINISH CAVITY FILLED WITH ROCKWOOL INSUL. BATTIS, TYP.

SEE STRUCT. FOR FDN & FOOTING SIZES/REINFORCEMENT.

ELASTOMERIC WATERPROOF MEMBRANE, BELOW GRADE, TYP.

2" XPS INSUL. AS DRAINBOARD.

METAL COIL STOCK OVER XPS INSUL. (AS DRAIN BOARD), RUN OVER TOP OF FOOTING, AND TURN UP TO DRECT WATER TO PER. DRAIN.

PT CANT STRIP.

6" DRAM. CONTINUOUS PERE. POLYETHYLENE DRAIN TILE, SURROUND W/CRUSHED STONE & WRAP IN GEOTEXTILE FABRIC, TYP.

UNDISTURBED SOIL.