

37 DEANE STREET
NEW CONSTRUCTION | SINGLE-FAMILY HOUSE

OWNER
Julia Gazdik
Passive Works, LLC
859 Willow Street
South Portland, ME 04106
E-MAIL: juliangazdik@gmail.com
PHONE: 972.262.6005



DEXTRIOUS CREATIVE

PORTLAND, ME 04102
TRACIE REED, ARCHITECT
MEARB, AIA, LEED AP BD+C
traciereed@dextrouscreative.com
207.409.0459 (cell)

PROJECT TEAM

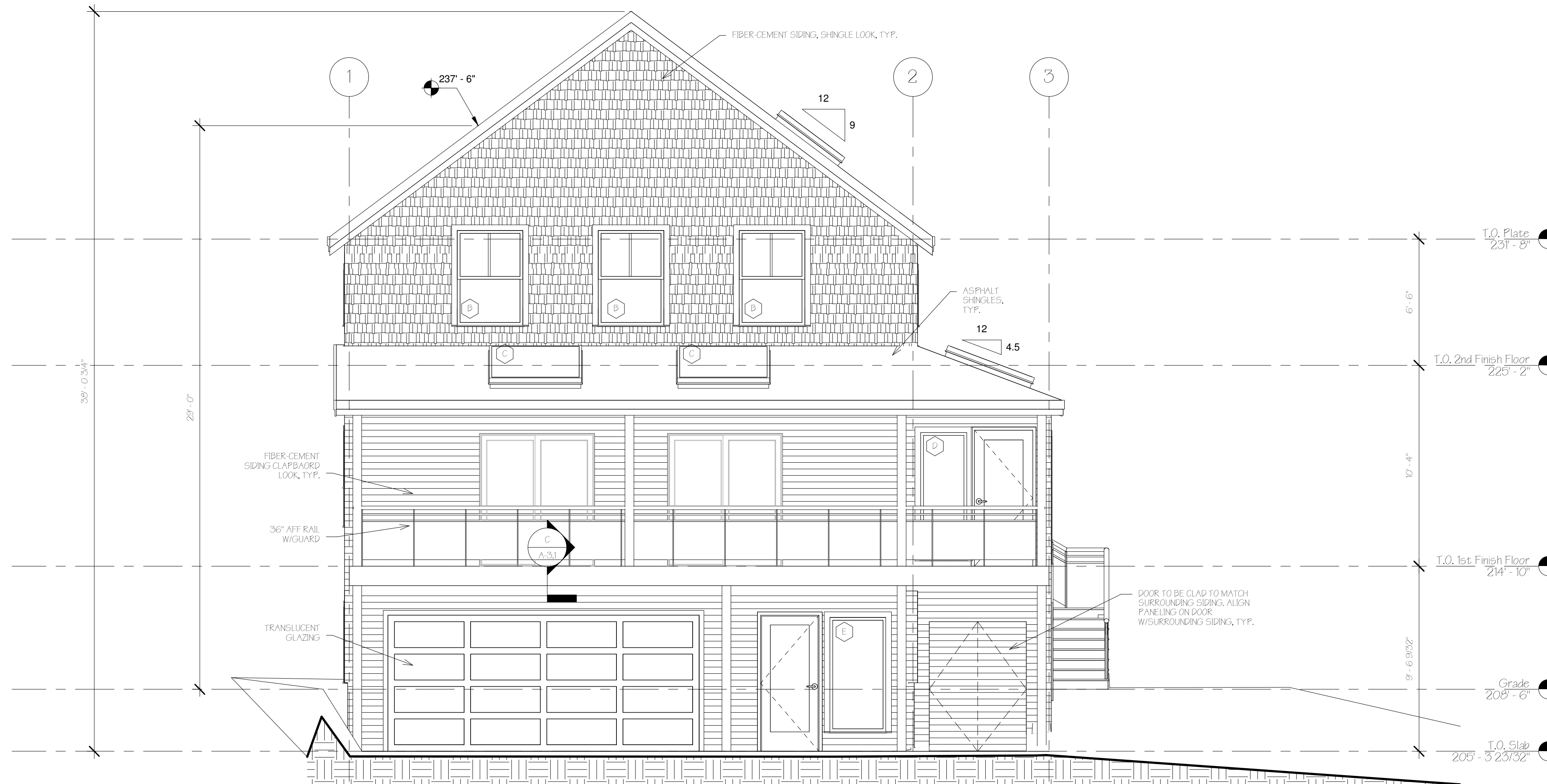
CIVIL ENGINEERING
Ross A. Gullitz, P.E., ME, NH, VT
CPESC, CPSWQ, CESSWI
Engineering Assistance & Design, Inc. (EAD)
10 North Road
Yarmouth, Maine 04096
Phone: 207-946-0839
Mobile: 207-939-7663
rullitz@maineaz.com

STRUCTURAL ENGINEER
Larry Wichroski, P. E.
Engineering Design Professionals
P.O. Box 575
Frogport, Me 04032
T: 207-663-5000
LWichroski@edp.com

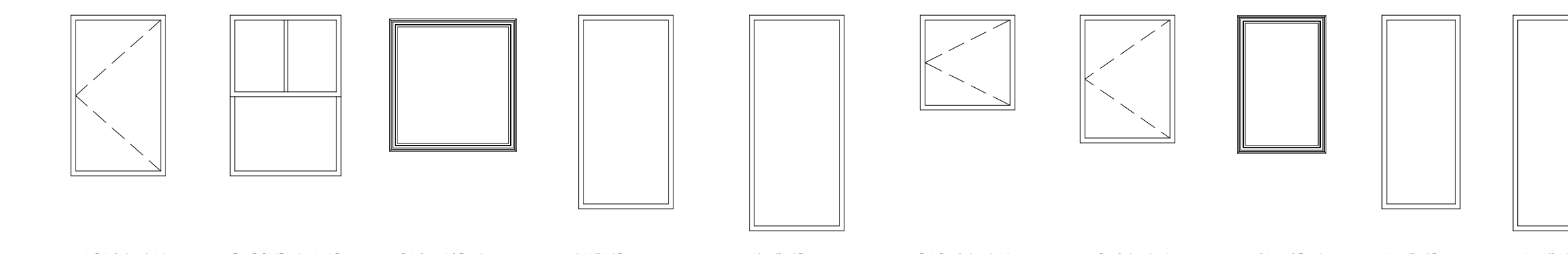
GEOTECHNICAL ENGINEER
Steve Marcotte, CG, PG, LSE
Sevee & Maher Engineers, Inc.
4 Blanchard Rd
Cumberland Center, ME 04021
T: 207-829-5016
C: 207-859-9600
sm@smemane.com

LANDSCAPE ARCHITECT
Tony Cowles
Maine Licensed Landscape Architect
Cowles studio Landscape architecture
T: (207) 415-4332
tony@cowles-studio.com

GENERAL CONTRACTOR
Josh Wojcik
Upright Frameworks
School St, Wilton, ME 04294
T: (207) 749-3066
jwojck@uprightframeworks.com



1 WEST
1/4" = 1'-0"



WINDOW TYPES
1/4" = 1'-0"

| WINDOW SCHEDULE | | | | |
|-----------------|---------------|--------|-----------------------|----------|
| Type Mark | Rough Opening | | Type | Comments |
| | Width | Height | | |
| A | 3'-0" | 6'-0" | Casement with Trim | |
| B | 3'-0" | 5'-0" | Double Hung with Trim | |
| C | 4'-8" | 4'-8" | Skylight | |
| D | 2'-6" | 6'-8" | Fixed with Trim | |
| E | 3'-0" | 6'-0" | Fixed with Trim | |
| F | 3'-0" | 6'-8" | Fixed with Trim | |
| G | 3'-0" | 3'-0" | Casement with Trim | |
| H | 3'-0" | 4'-0" | Casement with Trim | |
| J | 2'-6" | 4'-0" | Skylight | |
| K | 2'-6" | 6'-0" | Fixed with Trim | |

CONTRACTOR TO ENSURE THAT WINDOWS & DOORS REQUIRING SAFETY GLAZING PER IRC 2009 & ENERGY EFFICIENCY REQUIREMENTS OF IECC 2009 PER MUEL. ROUGH OPENINGS SHOULD BE 1" WIDER THAN WINDOW, ALL SIDES. SEE DETAIL N.A.31 FOR INSTALLATION FLASHING DETAIL @ HEAD & SILL, TYP. SEE STRUCT. FOR HEADER SIZES. NOTE THAT WINDOW SIZES ARE GENERIC, CONTRACTOR TO MATCH TO SELECTED MANUFACTURERS SIZING TABLE, TYP.

IRC 2009 SAFETY (TEMPERED) GLAZING REQUIRED IN ALL DOORS
IN BATHROOMS
GLAZING W/34" OF DOOR SWING IF SILL IS LESS THAN 60" AFF WALKING SURFACE
GLAZING ADJACENT TO RAMP OR STAIRS (WIN 36" AFF HORIZONTAL WALKING SURFACE)
GLAZING W/A SILL HEIGHT OF LESS THAN 18" AFF
IECC 2009 MIN. ENERGY REQ.
WINDOWS: U-0.29
SKYLIGHT: U-0.16

| No. | Description | Date |
|-----|-------------|------|
| | | |
| | | |

WEST ELEVATION

Project number: 16-16_73 Cumberland
Date: 06.02.16
Drawn by: Author
Checked by: Checker

A-2.1
Scale: 1/4" = 1'-0"

