

51-A-18

41 Deane St.

Duplex

Cayuga Corp.

RAP... THOFF. AL

58.32

NEEDS 5' OR MORE IN THIS AREA TO STAY

S15°07'47"E 100.00'

PA 1 POST A
5,412 S.F.

LOT 54

LOT 100

STUART B. BROWN

EXISTING 2 FAMILY
57 & 59

PORCH

DRILL HOLE FOUND

NEW SIDEWALK

BRICK/STONE WALK

S10°00"E

NEW BRICK SIDEWALK

NEW SIDEWALK

PAVED
PARKING FOR
TWO CARS

CONNECT TO EXISTING WALK

EXTEND CURB

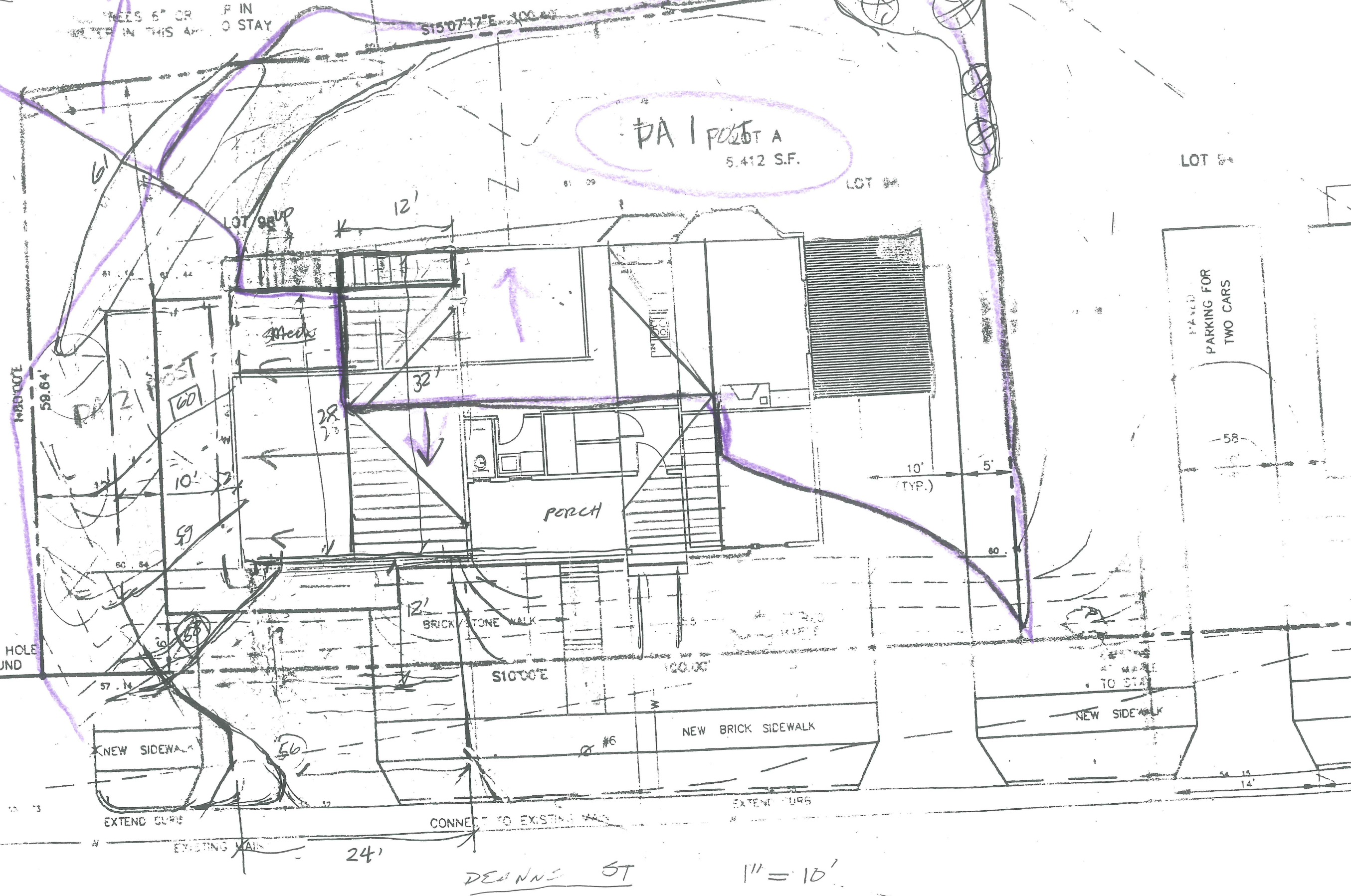
EXTEND CURB

EXISTING MAIN

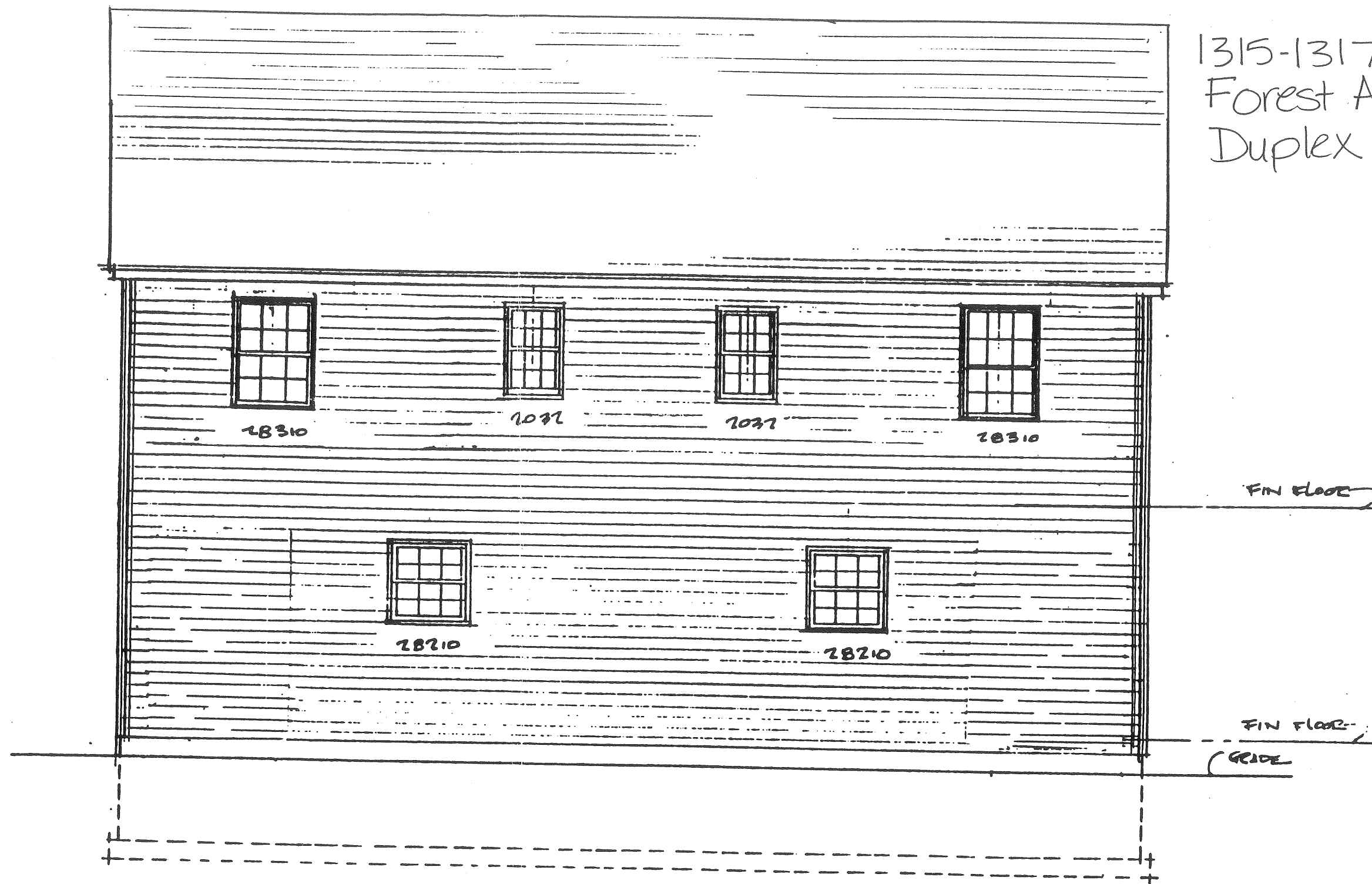
24'

DEANNS ST

1" = 10'

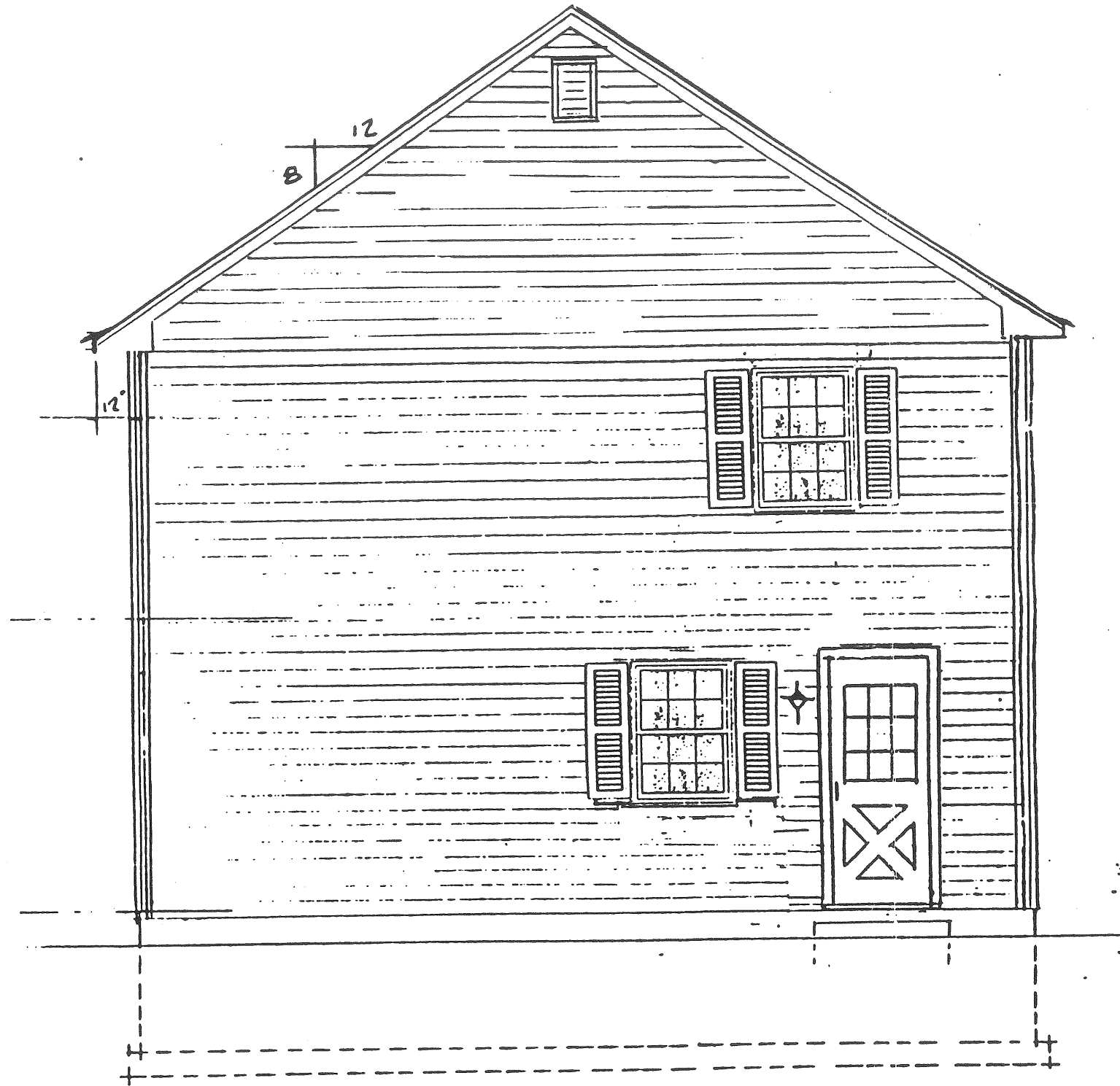


1315-1317
Forest Avenue
Duplex



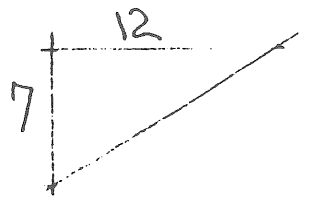
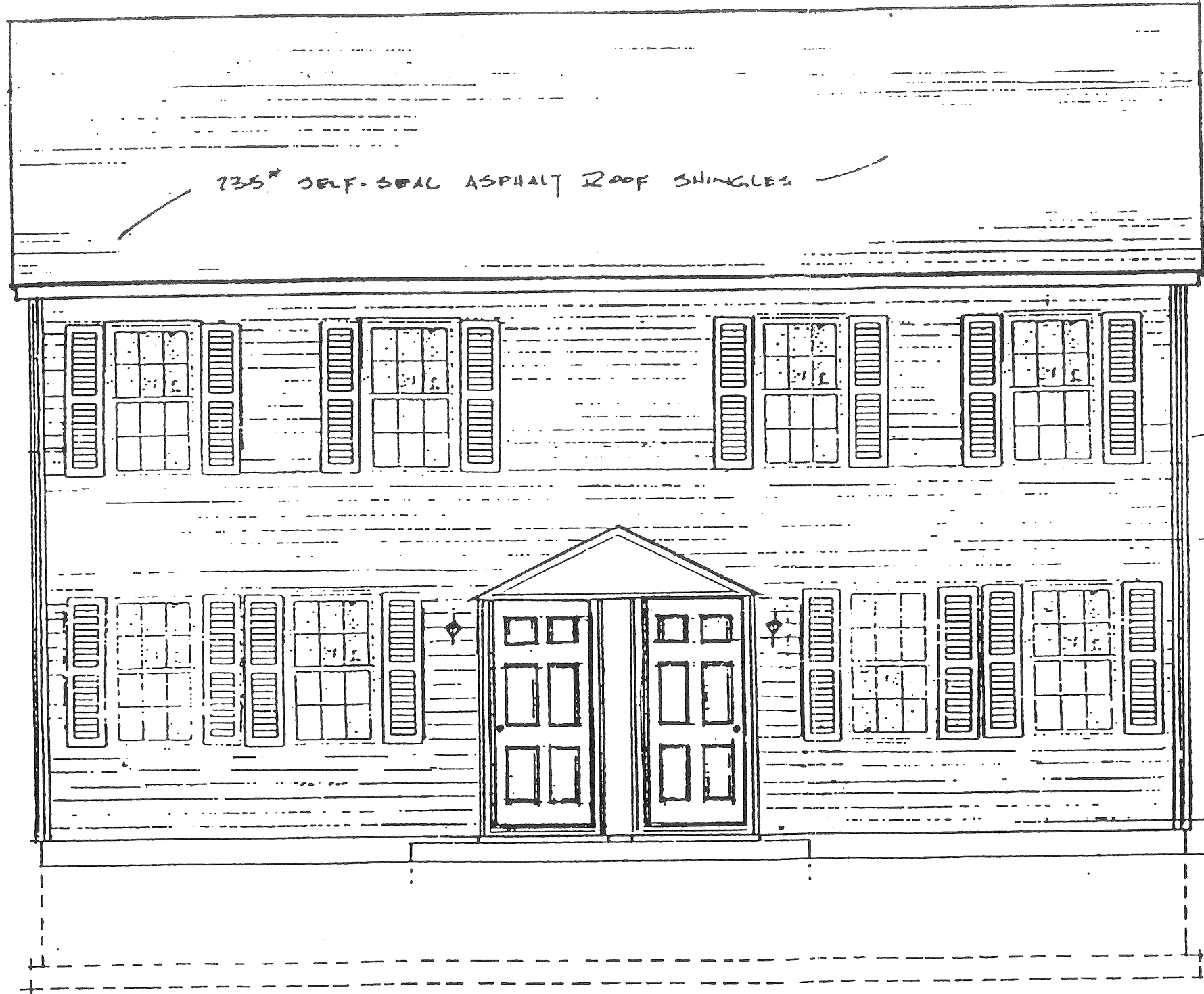
REAR ELEVATION
SCALE: 1/4" = 1'-0"

1315-1317 Forest
Avenue Duplex



SIDE ELEVATION
SCALE: 1/4" = 1'-0"

1315-1317 Forest Avenue Duplex



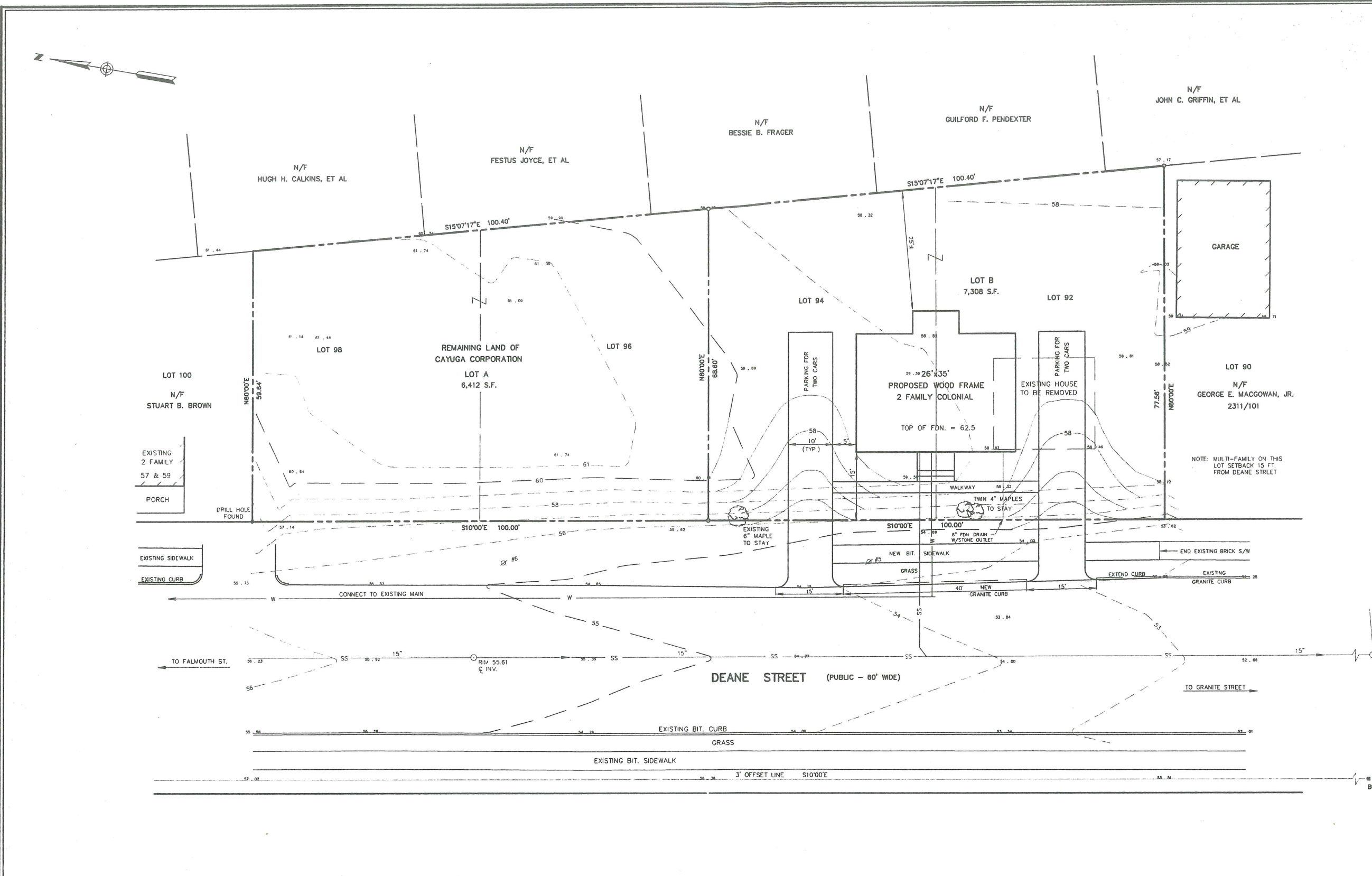
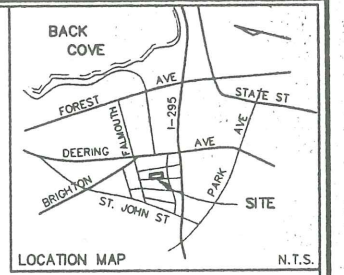
4" VINYL SIDING

6" X 6" FLUTED CORNER BOARDS

1ST FLOOR

2ND FLOOR
GRADE

FRONT ELEVATION
SCALE: 1/4" = 1'-0"

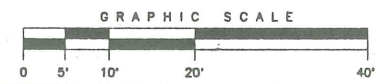


- LEGEND:**
- 5/8" IRON ROD SET
 - UTILITY POLE
 - SEWER MANHOLE
 - PROPOSED CURB
 - SS SANITARY SEWER
 - CONTOUR LINE
 - DESIGN CONTOUR
 - 50.00 SPOT ELEVATION

PLAN REFERENCES:
 PLAN OF LAND IN PORTLAND, MAINE, DEANE STREET, FOR RICHARD INGALLS DATED NOV. 1983 BY OWEN HASKELL, INC.

ZONING: R-5 ZONE
 SETBACKS - 1 & 1-1/2 STORY
 SIDE YARD: 8 FT.
 REAR YARD: 20 FT.
 FRONT YARD: 20 FT. OR AVERAGE OF ADJACENT HOUSES

- NOTES:**
- 1) OWNER OF RECORD: CAYUGA CORPORATION
 - 2) PREMISES ARE SHOWN AS LOTS 18, 19, 20 AND 21 ON PORTLAND ASSESSORS MAP 51, BLOCK A.
 - 3) LOT NUMBERS REFER TO PLAN RECORDED IN THE CUMBERLAND COUNTY REGISTRY OF DEEDS IN PLAN BOOK 14, PAGE 59.
 - 4) BENCH MARK: MONUMENT FOUND AT SOUTHWESTERLY CORNER OF DEANE STREET AND GRANITE STREET, ELEVATION 48.09, CITY DATUM.



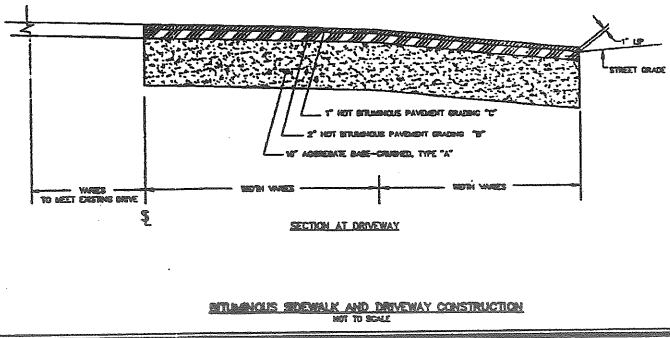
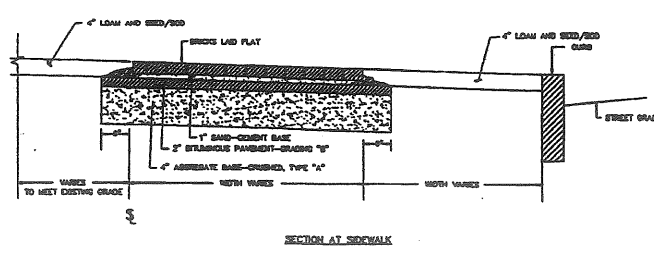
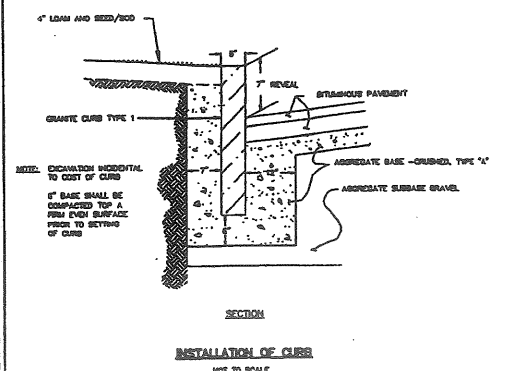
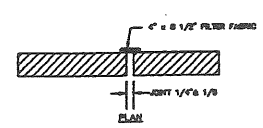
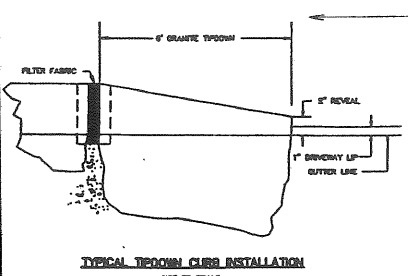
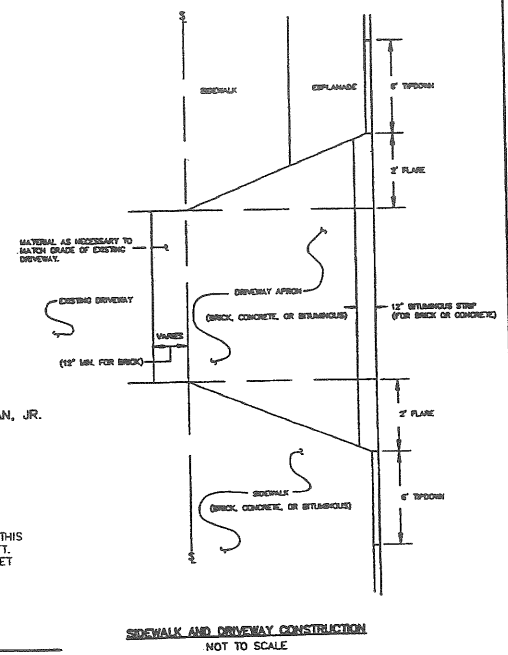
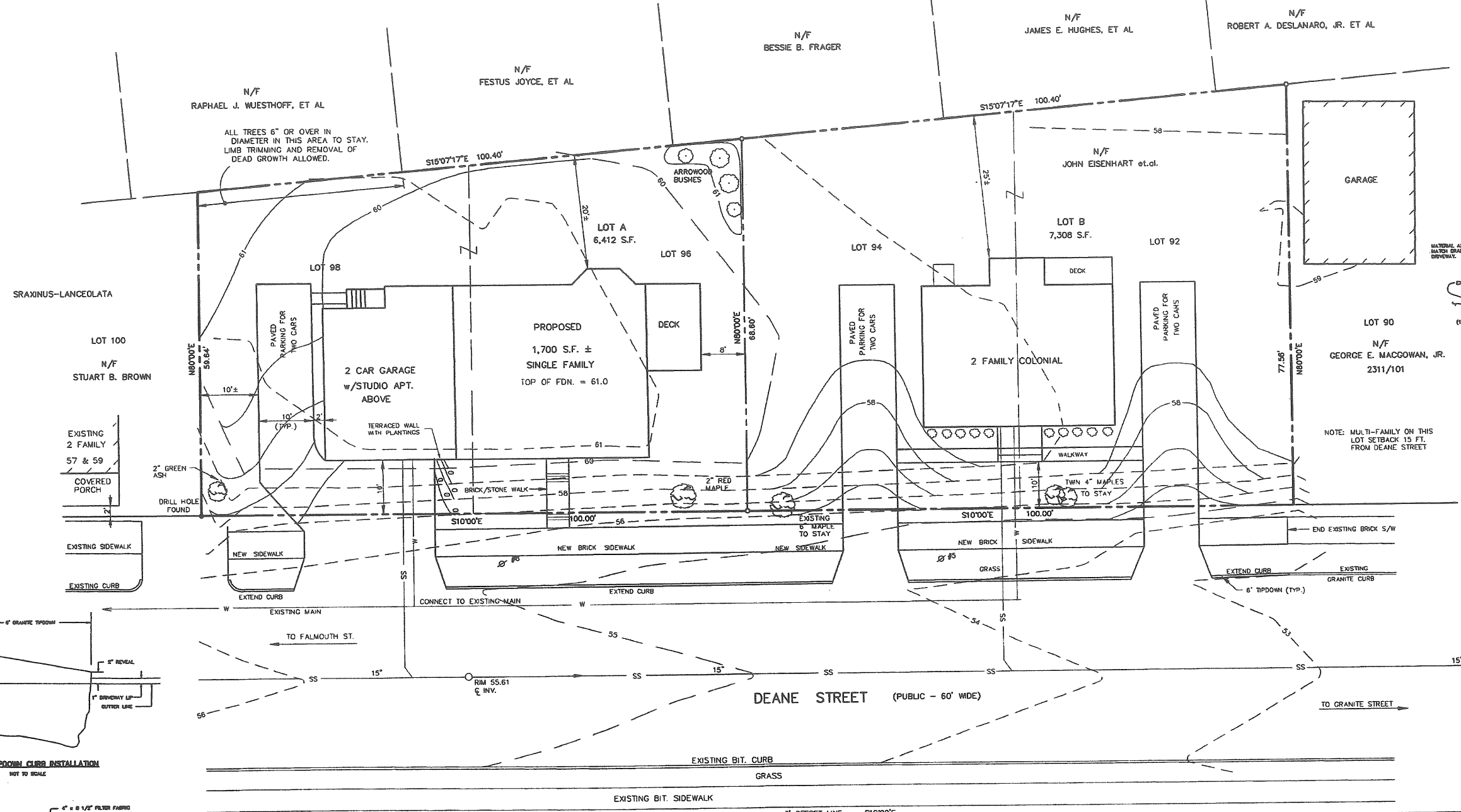
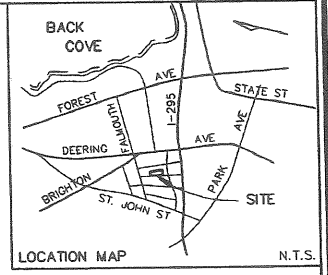
SITE PLAN
 AT
 41-45 DEANE STREET, PORTLAND, MAINE
 MADE FOR
HIGGINS CONSTRUCTION

OWEN HASKELL, INC.
 16 CASCO ST., PORTLAND, ME 04101 (207) 774-0424
 PROFESSIONAL LAND SURVEYORS

Drawn By	OHI	Date	NOV. 21, 1995	Job No.	83110P
Trace By	JLW	Scale	1" = 10'	Drwg. No.	1
Check By	SSS				
Book No.	747F				



- LEGEND:**
- 5/8" IRON ROD SET
 - ⊕ UTILITY POLE
 - ⊖ SEWER MANHOLE
 - ⊖ SEWER IN SEWER
 - SS CONTOUR LINE
 - SB DESIGN CONTOUR

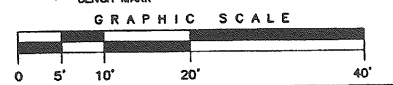


SIDWALK AND DRIVEWAY CONSTRUCTION NOT TO SCALE

PLAN REFERENCES:
 PLAN OF LAND IN PORTLAND, MAINE, DEANE STREET, FOR RICHARD INGALLS DATED NOV. 1983 BY OWEN HASKELL, INC.

ZONING: R-5 ZONE
 SETBACKS - 1 & 1-1/2 STORY
 SIDE YARD: 8 FT.
 REAR YARD: 20 FT.
 FRONT YARD: 20 FT. OR AVERAGE OF ADJACENT HOUSES

- NOTES:**
- OWNER OF RECORD: CAYUGA CORPORATION
P.O. BOX 10194, PORTLAND, ME 04104
 - PREMISES ARE SHOWN AS LOTS 18, 19, 20 AND 21 ON PORTLAND ASSESSORS MAP 51, BLOCK A.
 - LOT NUMBERS REFER TO PLAN RECORDED IN THE CUMBERLAND COUNTY REGISTRY OF DEEDS IN PLAN BOOK 14, PAGE 59.
 - BENCH MARK: MONUMENT FOUND AT SOUTHWESTERLY CORNER OF DEANE STREET AND GRANITE STREET, ELEVATION 48.09, CITY DATUM.
 - FOUNDATION PLANTINGS TO BE CHOSEN BY HOMEOWNER.



REV. 5	6-11-96	REVISED HOUSE ON LOT A
REV. 4	4/30/96	REVISED HOUSE ON LOT A
REV. 3	2/27/96	ADDED HOUSE - LOT A
REV. 2	12/6/95	ADDED DETAILS
REV. 1	11/28/95	MISC. REVISIONS

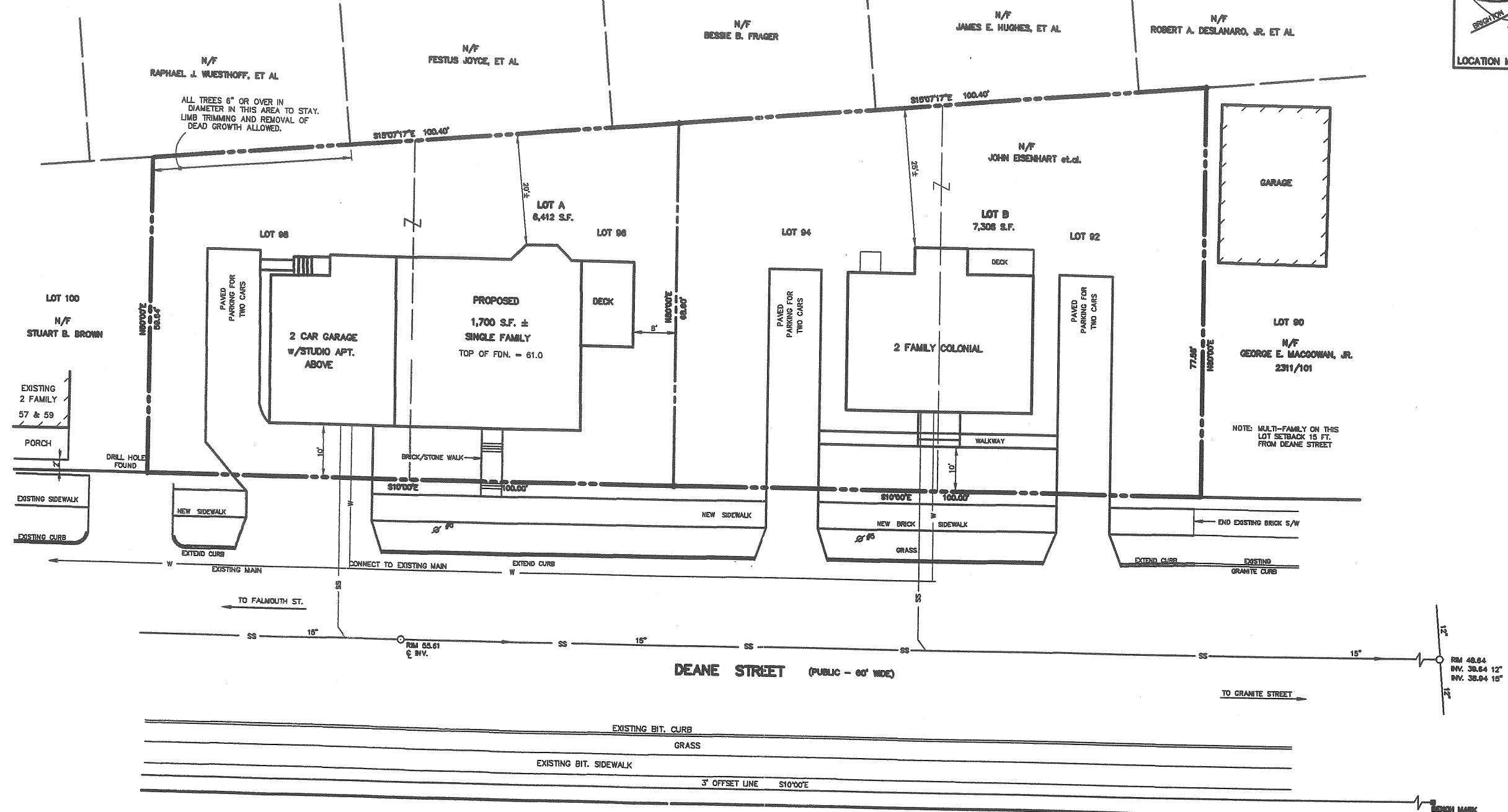
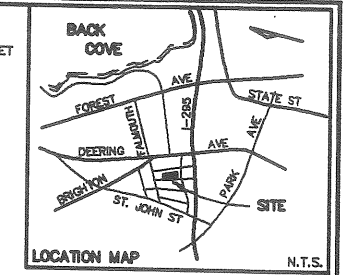
SITE AND SUBDIVISION PLAN
 DEANE STREET SUBDIVISION
 47-49 DEANE STREET, PORTLAND, MAINE
 MADE FOR
CAYUGA CORPORATION

OWEN HASKELL, INC.
 16 CASCO ST., PORTLAND, ME 04101 (207) 774-0424
 PROFESSIONAL LAND SURVEYORS

Drawn By	OHI	Date	NOV. 21, 1995	Job No.	83110P
Trace By	JLW	Scale	1" = 10'	Drwg. No.	1
Check By	SSS				
Book No.	747F				



LEGEND:
 ○ 5/8" IRON ROD SET
 ⚡ UTILITY POLE
 ○ SEWER MANHOLE
 — CURB
 — SS SEWER LINE



APPROVED BY THE OF CITY OF PORTLAND
 PLANNING BOARD

 DATE: _____

PLAN REFERENCES:

PLAN OF LAND IN PORTLAND, MAINE, DEANE STREET, FOR RICHARD INGALLS DATED NOV. 1983 BY OWEN HASKELL, INC.

ZONING: R-5 ZONE

SETBACKS - 1 & 1-1/2 STORY
 SIDE YARD: 8 FT.
 REAR YARD: 20 FT.
 FRONT YARD: 20 FT. OR AVERAGE OF ADJACENT HOUSES

NOTES:

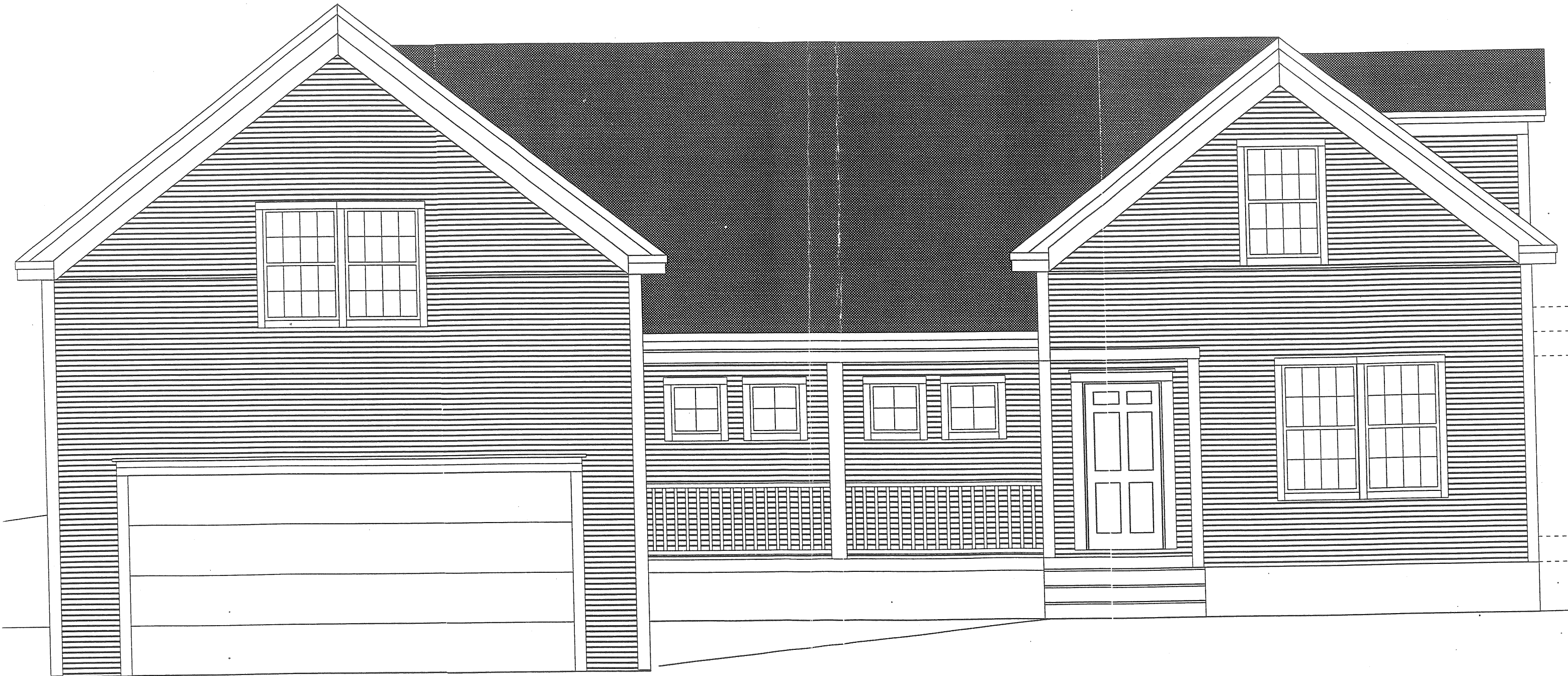
- OWNER OF RECORD: CAYUGA CORPORATION
 P.O. BOX 10184, PORTLAND, ME 04104
- PREMISES ARE SHOWN AS LOTS 18, 19, 20 AND 21 ON PORTLAND ASSESSORS MAP 51, BLOCK A.
- LOT NUMBERS REFER TO PLAN RECORDED IN THE CUMBERLAND COUNTY REGISTRY OF DEEDS IN PLAN BOOK 14, PAGE 59.
- BENCH MARK: MONUMENT FOUND AT SOUTHWESTERLY CORNER OF DEANE STREET AND GRANITE STREET, ELEVATION 48.09, CITY DATUM.
- PROPERTY IS LOCATED IN ZONE "C" AREA OF MINIMAL FLOODING.



RECORDING PLAT
 DEANE STREET SUBDIVISION
 47-49 DEANE STREET, PORTLAND, MAINE
 MADE FOR
CAYUGA CORPORATION

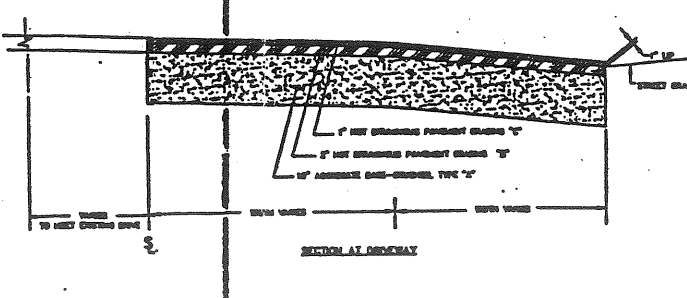
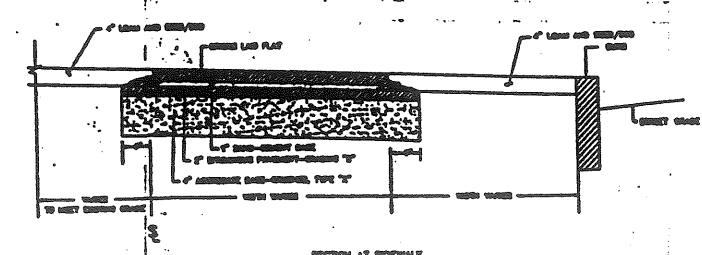
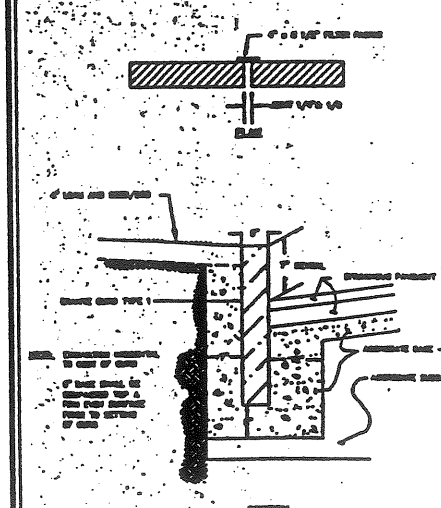
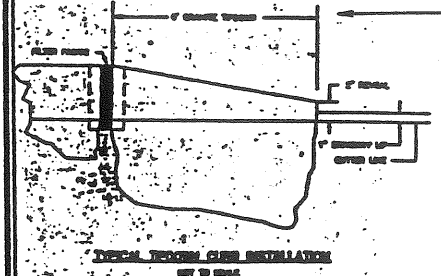
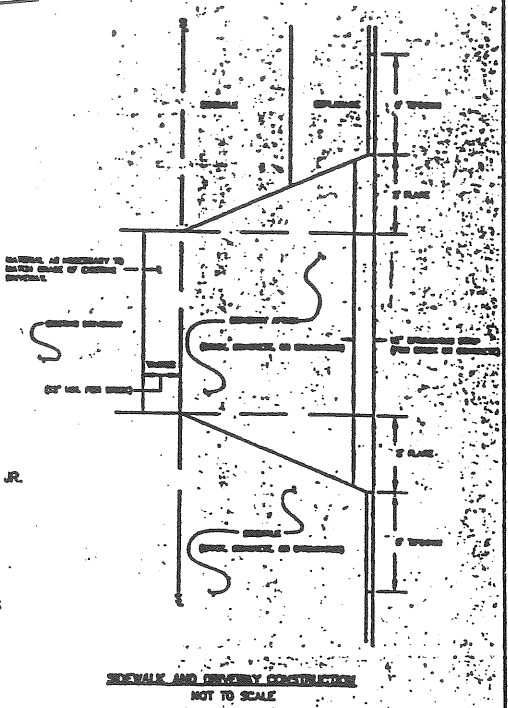
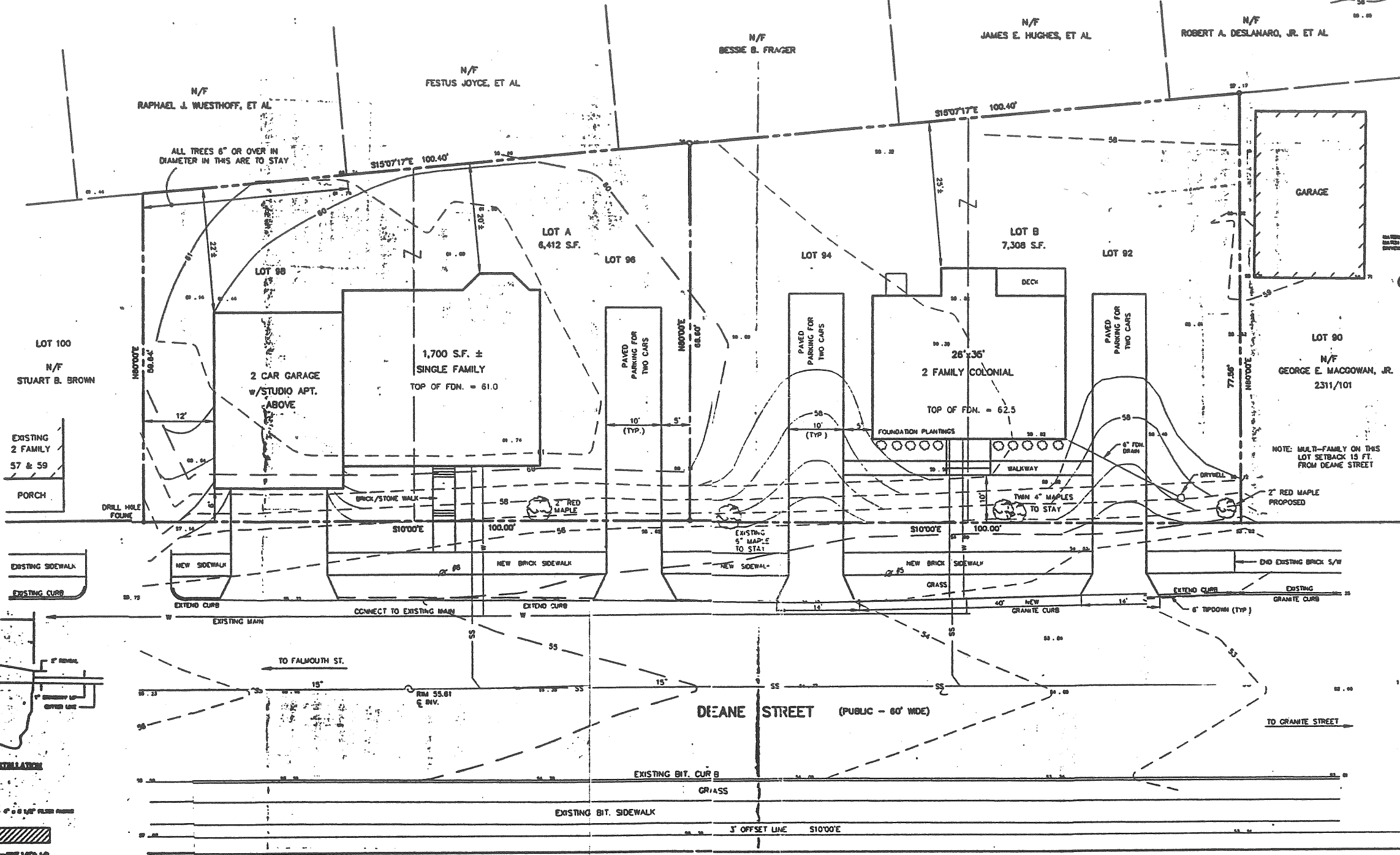
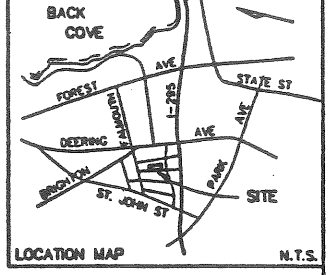
OWEN HASKELL, INC.
 16 CARDO ST., PORTLAND, ME 04101 (207)774-0484
 PROFESSIONAL LAND SURVEYORS

Drawn By: OHI	Date: JUNE 12, 1998	Job No.: 83110P
Trace By: JLW	Scale: 1" = 10'	Drawn No.: 2
Check By: SSS		
Book No.: 747F		





- LEGEND:**
- 5/8" IRON ROD SET
 - UTILITY POLE
 - SEWER MANHOLE
 - PROPOSED CURB
 - SANITARY SEWER
 - - - CONTOUR LINE
 - - - DESIGN CONTOUR
 - SPOT ELEVATION

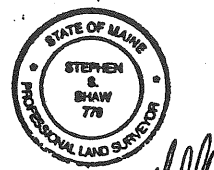
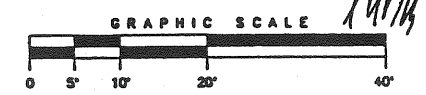


SECTION AT DRIVEWAY
SCHEDULED SIDEWALK AND DRIVEWAY CONSTRUCTION
NOT TO SCALE

PLAN REFERENCES:
PLAN OF LAND IN PORTLAND, MAINE, DEANE STREET, FOR RICHARD INGALLS DATED NOV. 1983 BY OWEN HASKELL, INC.

ZONING: R-5 ZONE
SETBACKS - 1 & 1-1/2 STORY
SIDE YARD: 8 FT.
REAR YARD: 20 FT.
FRONT YARD: 20 FT. OR AVERAGE OF ADJACENT HOUSES

- NOTES:**
- 1) OWNER OF RECORD: CAYUGA CORPORATION
P.O. BOX 10194, PORTLAND, ME 04104
 - 2) PREMISES ARE SHOWN AS LOTS 18, 19, 20 AND 21 ON PORTLAND ASSESSOR'S MAP 51, BLOCK A
 - 3) LOT NUMBERS REFER TO PLAN RECORDED IN THE CUMBERLAND COUNTY REGISTRY OF DEEDS IN PLAN BOOK 14, PAGE 59.
 - 4) BENCH MARK: MONUMENT FOUND AT SOUTH-WESTERLY CORNER OF DEANE STREET AND GRANITE STREET, ELEVATION 48.09, CITY DATUM.
 - 5) FOUNDATION PLANTINGS TO BE CHOSEN BY HOMEOWNER

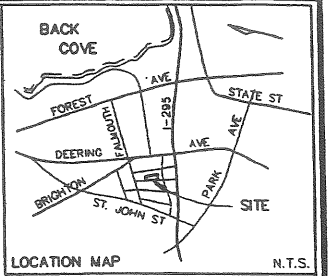


REV. 4	4/30/96	REVISED HOUSE ON LOT A
REV. 3	2/27/96	ADDED HOUSE - LOT A
REV. 2	12/6/95	ADDED DETAILS
REV. 1	11/28/95	MISC. REVISIONS

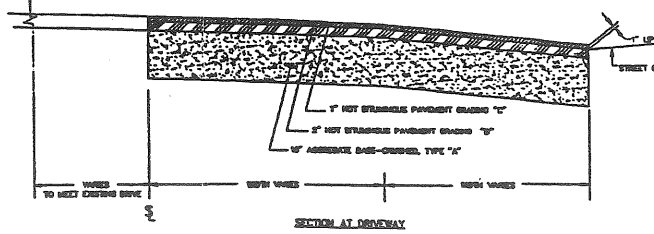
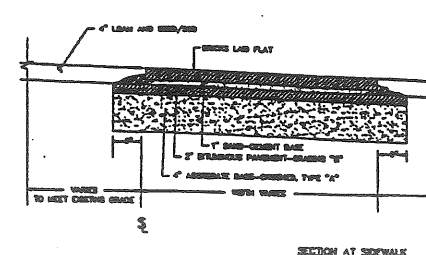
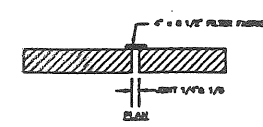
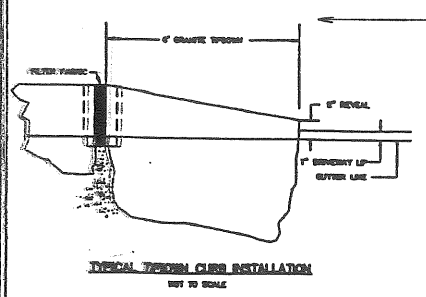
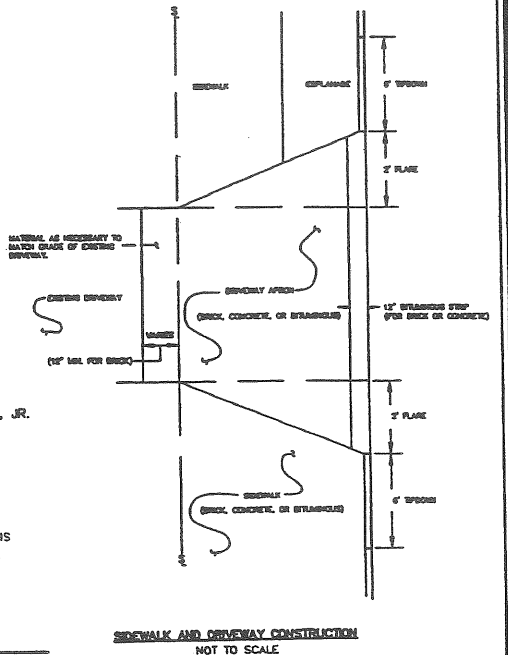
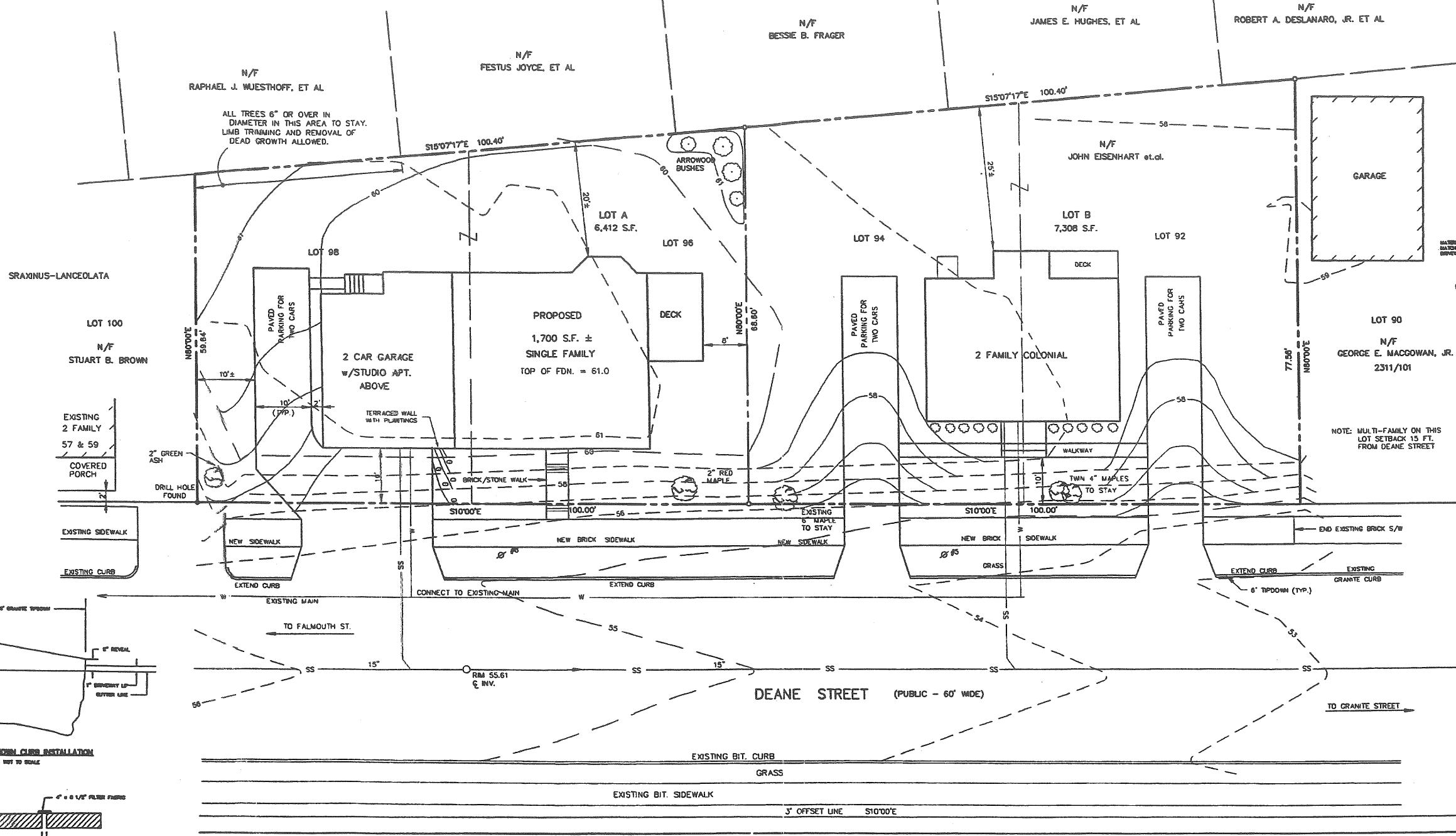
SITE PLAN
AT
47-49 DEANE STREET, PORTLAND, MAINE
MADE FOR
CAYUGA CORPORATION

OWEN HASKELL, INC.
16 CASCO ST., PORTLAND, ME 04101 (207) 774-0424
PROFESSIONAL LAND SURVEYORS

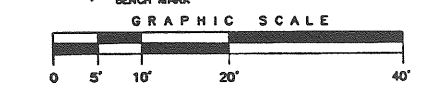
Drawn By	OWH	Date	Nov. 21, 1995	Job No.	83110P
Trace By	JLW	Scale		Drawn By	
Check By	SSS				
Book No.					



- LEGEND:**
- 5/8" IRON ROD SET
 - UTILITY POLE
 - S— S— SEWER MANHOLE
 - S— S— BURIED CURB
 - S— S— SEWER/RAINSEWER
 - S— S— CONTOUR LINE
 - S— S— DESIGN CONTOUR



- PLAN REFERENCES:**
- PLAN OF LAND IN PORTLAND, MAINE, DEANE STREET, FOR RICHARD INCALLS DATED NOV. 1983 BY OWEN HASKELL, INC.
- ZONING:** R-5 ZONE
 SETBACKS - 1 & 1-1/2 STORY
 SIDE YARD: 8 FT.
 REAR YARD: 20 FT.
 FRONT YARD: 20 FT. OR AVERAGE OF ADJACENT HOUSES
- NOTES:**
- OWNER OF RECORD: CAYUGA CORPORATION
P.O. BOX 10194, PORTLAND, ME 04104
 - PREMISES ARE SHOWN AS LOTS 18, 19, 20 AND 21 ON PORTLAND ASSESSORS MAP 51, BLOCK A.
 - LOT NUMBERS REFER TO PLAN RECORDED IN THE CUMBERLAND COUNTY REGISTRY OF DEEDS IN PLAN BOOK 14, PAGE 59.
 - BENCH MARK: MONUMENT FOUND AT SOUTHWESTERLY CORNER OF DEANE STREET AND GRANITE STREET, ELEVATION 48.09, CITY DATUM.
 - FOUNDATION PLANTINGS TO BE CHOSEN BY HOMEOWNER.



REV. 5	6-11-98	REVISED HOUSE ON LOT A
REV. 4	4/30/96	REVISED HOUSE ON LOT A
REV. 3	2/27/96	ADDED HOUSE - LOT A
REV. 2	12/6/95	ADDED DETAILS
REV. 1	11/28/95	MISC. REVISIONS

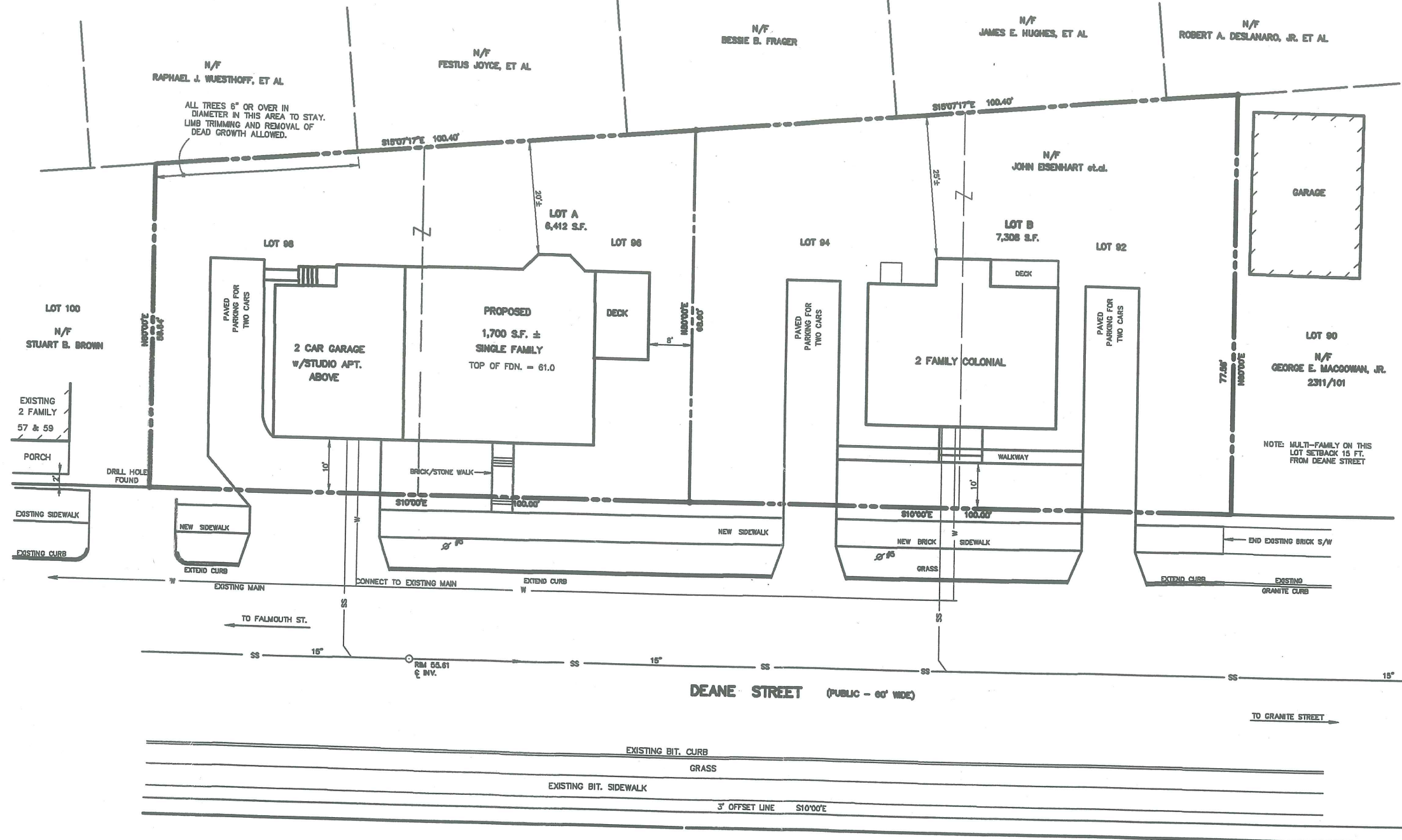
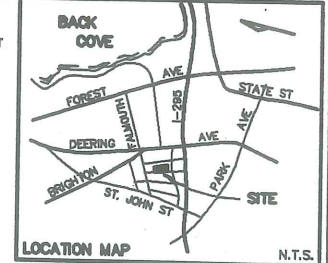
SITE AND SUBDIVISION PLAN
 DEANE STREET SUBDIVISION
 47-49 DEANE STREET, PORTLAND, MAINE
 MADE FOR
CAYUGA CORPORATION

OWEN HASKELL, INC.
 16 CASCO ST., PORTLAND, ME 04101 (207) 774-0424
 PROFESSIONAL LAND SURVEYORS

Drawn By	OHI	Date	NOV. 21, 1995	Job No.	83110P
Trace By	JLW	Scale	1" = 10'	Draw. No.	1
Check By	SSS	Book No.	747F		



LEGEND:
 ○ 5/8" IRON ROD SET
 ⚡ UTILITY POLE
 ○ SEWER MANHOLE
 — CURB
 — SS SEWER LINE



APPROVED BY THE OF CITY OF PORTLAND
 PLANNING BOARD

 DATE: _____

PLAN REFERENCES:

PLAN OF LAND IN PORTLAND, MAINE, DEANE STREET, FOR RICHARD INGALLS DATED NOV. 1983 BY OWEN HASKELL, INC.

ZONING:

R-5 ZONE
 SETBACKS - 1 & 1-1/2 STORY
 SIDE YARD: 8 FT.
 REAR YARD: 20 FT.
 FRONT YARD: 20 FT. OR AVERAGE OF ADJACENT HOUSES

NOTES:

- OWNER OF RECORD: CAYUGA CORPORATION
 P.O. BOX 10194, PORTLAND, ME 04104
- PREMISES ARE SHOWN AS LOTS 18, 19, 20 AND 21 ON PORTLAND ASSESSORS MAP 51, BLOCK A.
- LOT NUMBERS REFER TO PLAN RECORDED IN THE CUMBERLAND COUNTY REGISTRY OF DEEDS IN PLAN BOOK 14, PAGE 59.
- BENCH MARK: MONUMENT FOUND AT SOUTHWESTERLY CORNER OF DEANE STREET AND GRANITE STREET, ELEVATION 48.09, CITY DATUM.
- PROPERTY IS LOCATED IN ZONE "C" AREA OF MINIMAL FLOODING.



RECORDING PLAT
 DEANE STREET SUBDIVISION
 47-49 DEANE STREET, PORTLAND, MAINE
 MADE FOR
CAYUGA CORPORATION

OWEN HASKELL, INC.
 18 CARCO ST., PORTLAND, ME 04101 (207) 774-0484
 PROFESSIONAL LAND SURVEYORS

Drawn By: OHI	Date: JUNE 12, 1998	Job No.: 83110P
Trace By: JLW	Scale: 1" = 10'	Draw. No.: 2
Check By: SSS		
Book No.: 747F		