

PROPOSED DRAINAGE SCHEDULE

CB #1 RM= 20.60 INV. IN 12"= 16.70 INV. IN 8"= 16.70 INV. OUT 12"= 16.60	AD #1 RM= 17.68 INV. 6"= 16.18	AD #5 RM= TO BE FIELD ADJUSTED INV. 6"= 15.68
CB #2 RM= 18.36 INV. IN 12"= 14.89 INV. IN 8"= 14.89 (FUTURE CONNECTION) INV. IN 8"= 16.40 (ROOF DRAIN) INV. OUT 12"= 14.79	AD #2 RM= TO BE FIELD ADJUSTED INV. 6"= 16.04	AD #6 RM= TO BE FIELD ADJUSTED INV. 6"= 15.42
CB #3 RM= 18.36 INV. IN 12"= 14.10 INV. IN 12"= 14.67 INV. OUT 12"= 14.00	AD #3 RM= TO BE FIELD ADJUSTED INV. 6"= 15.84	
CB #4 RM= 18.90 INV. IN 12"= 13.00 INV. IN 12"= 13.00 INV. OUT 12"= 12.40	AD #4 RM= TO BE FIELD ADJUSTED INV. 6"= 15.72	
CB #5 RM= 17.80 INV. IN 12"= 13.50 INV. OUT 12"= 13.40		
FI #1 RM= 23.42 INV.=17.00		
FI #2 RM= 21.75 INV.=16.00		
FSM#1 RM= 18.82 CL INV.= 9.42 INV. N= 12.75		

PORTLAND EXPOSITION BUILDING
FFE=25.11

GENERAL NOTES

- TOTAL SITE AREA: -
- ZONING DISTRICT: RECREATION OPEN SPACE (ROS)
- MAP AND LOT: O52-C
- EXISTING CONDITIONS AND TOPOGRAPHIC INFORMATION TAKEN FROM A PLAN ENTITLED: "EXISTING CONDITIONS PLAN OF HADLOCK FIELD, PORTLAND, MAINE, MADE FOR MITCHELL AND ASSOCIATES, 70 CENTER STREET, PORTLAND, MAINE," BY OWEN HASKELL, INC., DATED NOVEMBER 22, 2004.
- THE CONTRACTOR IS SPECIFICALLY CAUTIONED THAT THE LOCATION AND/OR ELEVATION OF EXISTING UTILITIES AS SHOWN ON THESE PLANS IS BASED ON RECORDS OF THE VARIOUS UTILITY COMPANIES AND WHERE POSSIBLE MEASUREMENTS TAKEN IN THE FIELD. THE INFORMATION IS NOT TO BE RELIED ON AS BEING COMPLETE. THE CONTRACTOR MUST CALL DIG SAFE! 1-800-344-7233, AND THE APPROPRIATE UTILITY COMPANY AT LEAST 48 HOURS BEFORE ANY EXCAVATION TO REQUEST EXACT FIELD LOCATIONS OF UTILITIES. IT SHALL BE THE RESPONSIBILITY OF THE CONTRACTOR TO RELOCATE ALL EXISTING UTILITIES WHICH CONFLICT WITH THE PROPOSED IMPROVEMENTS SHOWN ON THE PLANS.
- SITE CONTRACTOR SHALL PERFORM TEST PIT INVESTIGATION FOR ALL IDENTIFIED POTENTIAL CONFLICTS. THE CONTRACTOR SHALL IMMEDIATELY NOTIFY THE OWNERS REPRESENTATIVE OF INCURRED CONFLICTS.
- THE CONTRACTOR SHALL BE RESPONSIBLE FOR COORDINATING INSTALLATION OF UTILITIES WITH APPROPRIATE PROVIDER.
- REMOVE ABANDONED STRUCTURES AND PIPES WHERE ENCOUNTERED AND OR FILL PIPE WITH FLOWABLE CONCRETE. CAP EXISTING SANITARY CONNECTION TO ALPES HOUSE SEWER MAIN BEYOND LIMIT.
- CONTRACTOR TO COORDINATE RELOCATION OF IRRIGATION SERVICE WITH CITY OF PORTLAND FACILITY MANAGER FOR HADLOCK AND FITZPATRICK STADIUMS.
- CONTRACTOR TO LOAM AND SEED ALL DISTURBED AREAS OR AS NOTED ON THE DRAWINGS.

LEGEND

	EXISTING	PROPOSED
SPOT ELEVATIONS	+12.75	+15.75
CONTOURS	25	25
CATCH BASIN	ECB #2	CB #1
CLEAN OUT		CO
MANHOLE	ESM#1	
UNDER DRAIN	EUD	UD
ROOF DRAIN		RD
STORM DRAIN	ESD	SD
SEWER	ES	S
ELECTRIC	EUGE	E
WATER	EW	W
GATE VALVE		
LIGHT POLE		
CHAIN LINK FENCE		
WOOD FENCE		
RELOCATED WOOD FENCE		
COLUMN LOCATIONS		
'VERTICA' BLOCK WALL		
SILT FENCE		

Prepared For:

Owner:
CITY OF PORTLAND
389 Congress Street
Portland, Maine 04101

Applicant:

PORTLAND SEADOGS
P.O. Box 636
Portland, Maine 04104

Prepared By:

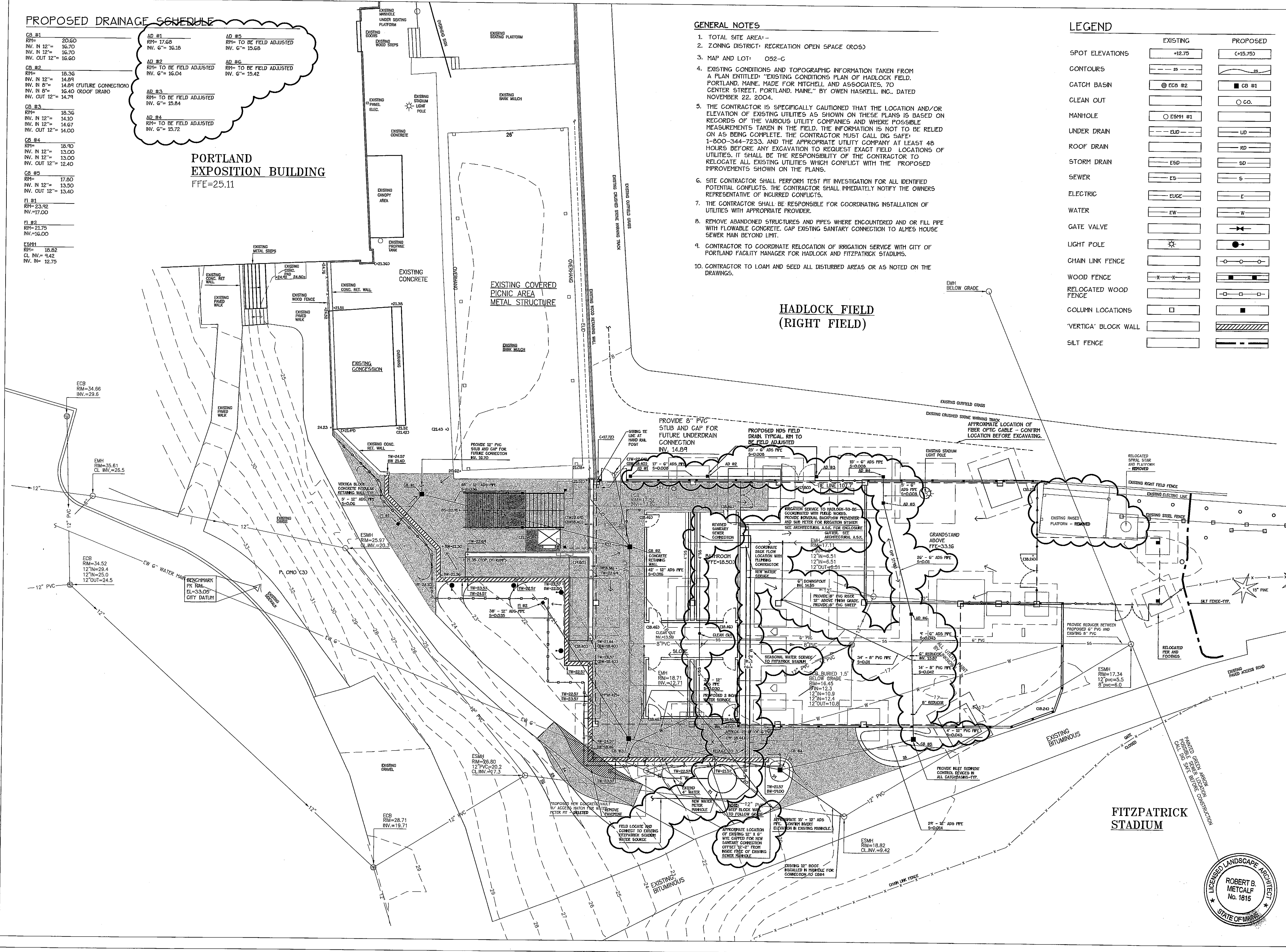
MITCHELL & ASSOCIATES
Landscape Architects
The Staples School
70 Center Street
Portland, Maine 04101
Tel: (207) 774-4427

HADLOCK STADIUM IMPROVEMENTS

Portland, Maine

271 Park Avenue

HADLOCK FIELD (RIGHT FIELD)



Date:

FEBRUARY 1, 2005

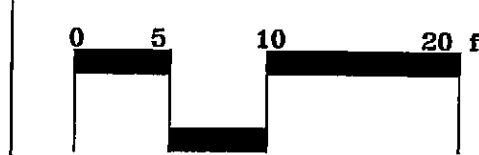
Revisions:

FOR PLANNING BOARD REVIEW
FEBRUARY 14, 2005
REVISED TO INCLUDE SITE
IMPROVEMENTS MADE BY THE CITY
JUNE 14, 2005
REVISED SEPTEMBER 27, 2005
REVISED NOVEMBER 16, 2005
REVISED DECEMBER 18, 2005
REVISED JAN. 6, 2006 - DOWNSPOUTS

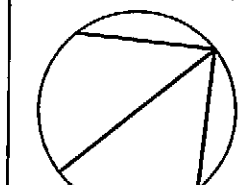
Reproduction or reuse of
this document without the
expressed written consent of
Mitchell & Associates is prohibited.

Title:
GRADING, DRAINAGE
AND UTILITIES PLAN

Scale: 1"=10'



North:



Sheet No:

3

