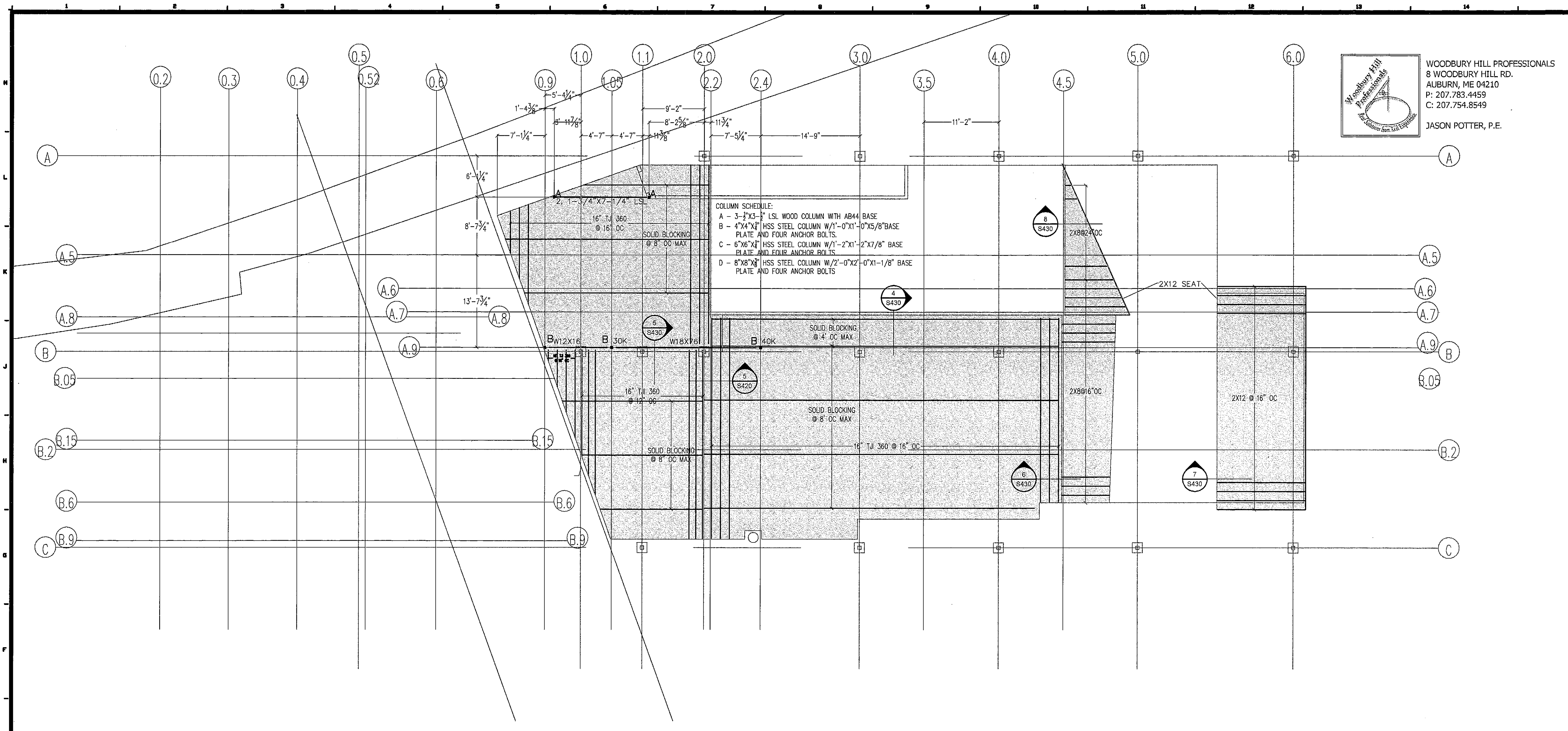


WOODBURY HILL PROFESSIONALS
 8 WOODBURY HILL RD.
 AUBURN, ME 04210
 P: 207.783.4459
 C: 207.754.8549
 JASON POTTER, P.E.

PO BOX 301
 FREEPORT, MAINE
 04032

TEL 207-865-1272
 FAX 207-865-XXXX
 WWW.DOMUSARCHITECTS.NET



COLUMN SCHEDULE:
 A - 3-1/2"x3-1/2" LSL WOOD COLUMN WITH AB44 BASE
 B - 4"x4"x1/2" HSS STEEL COLUMN W/1'-0"x1'-0"x5/8" BASE PLATE AND FOUR ANCHOR BOLTS
 C - 6"x6"x1/2" HSS STEEL COLUMN W/1'-2"x1'-2"x7/8" BASE PLATE AND FOUR ANCHOR BOLTS
 D - 8"x8"x1/2" HSS STEEL COLUMN W/2'-0"x2'-0"x1-1/8" BASE PLATE AND FOUR ANCHOR BOLTS

NOTES/ REVISIONS

- _____
- _____
- _____
- _____
- _____
- _____
- _____
- _____
- _____
- _____
- _____

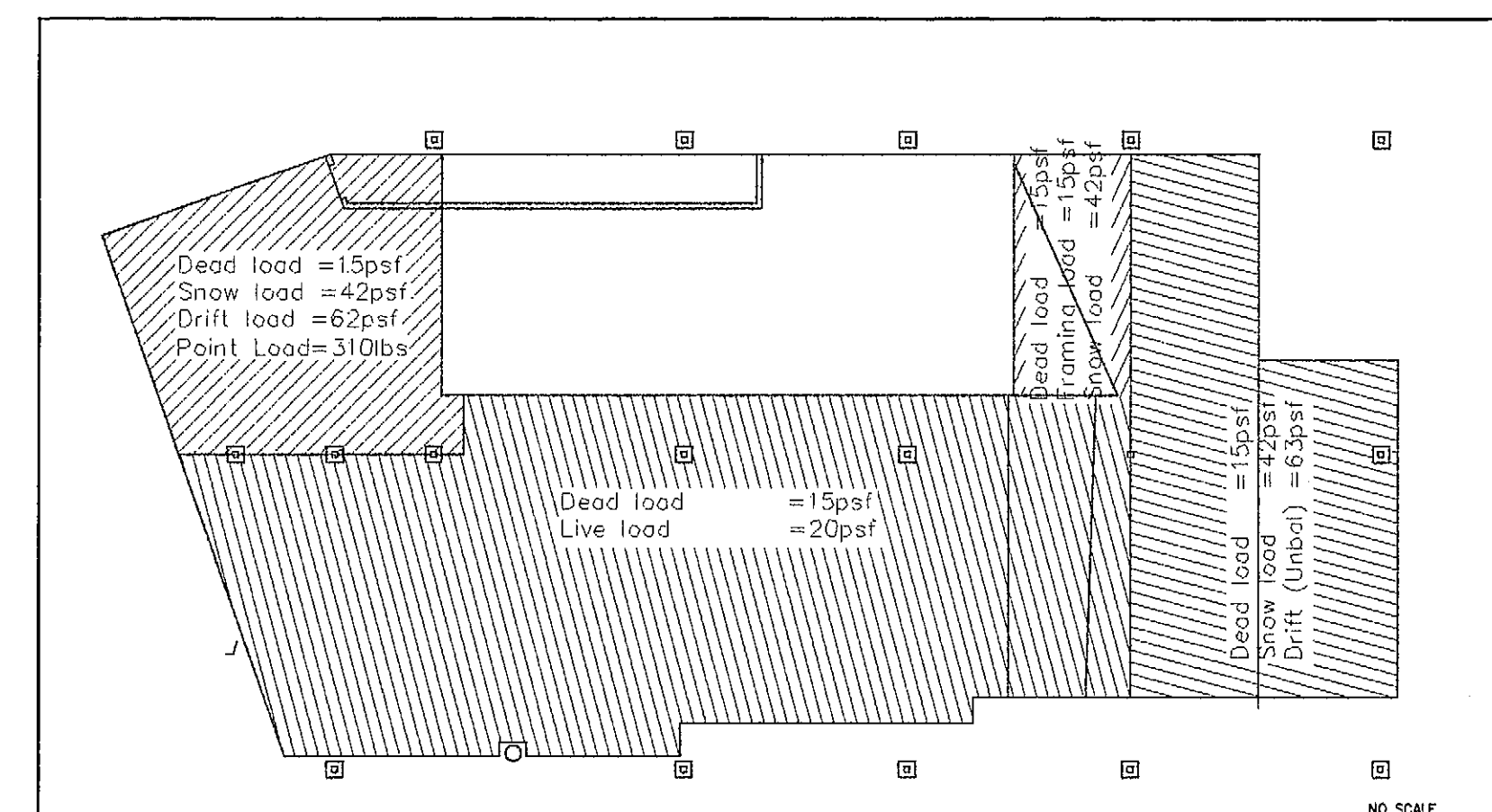
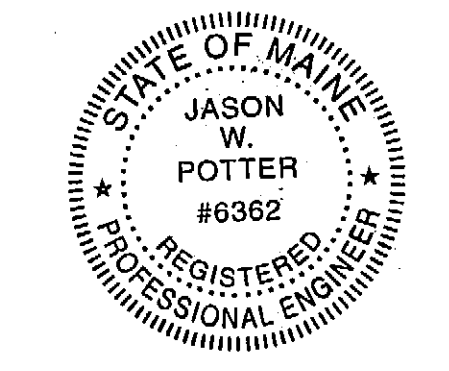
PORTLAND
 SEA DOGS
 CLUB HOUSE

HADLOCK FIELD
 PORTLAND, ME

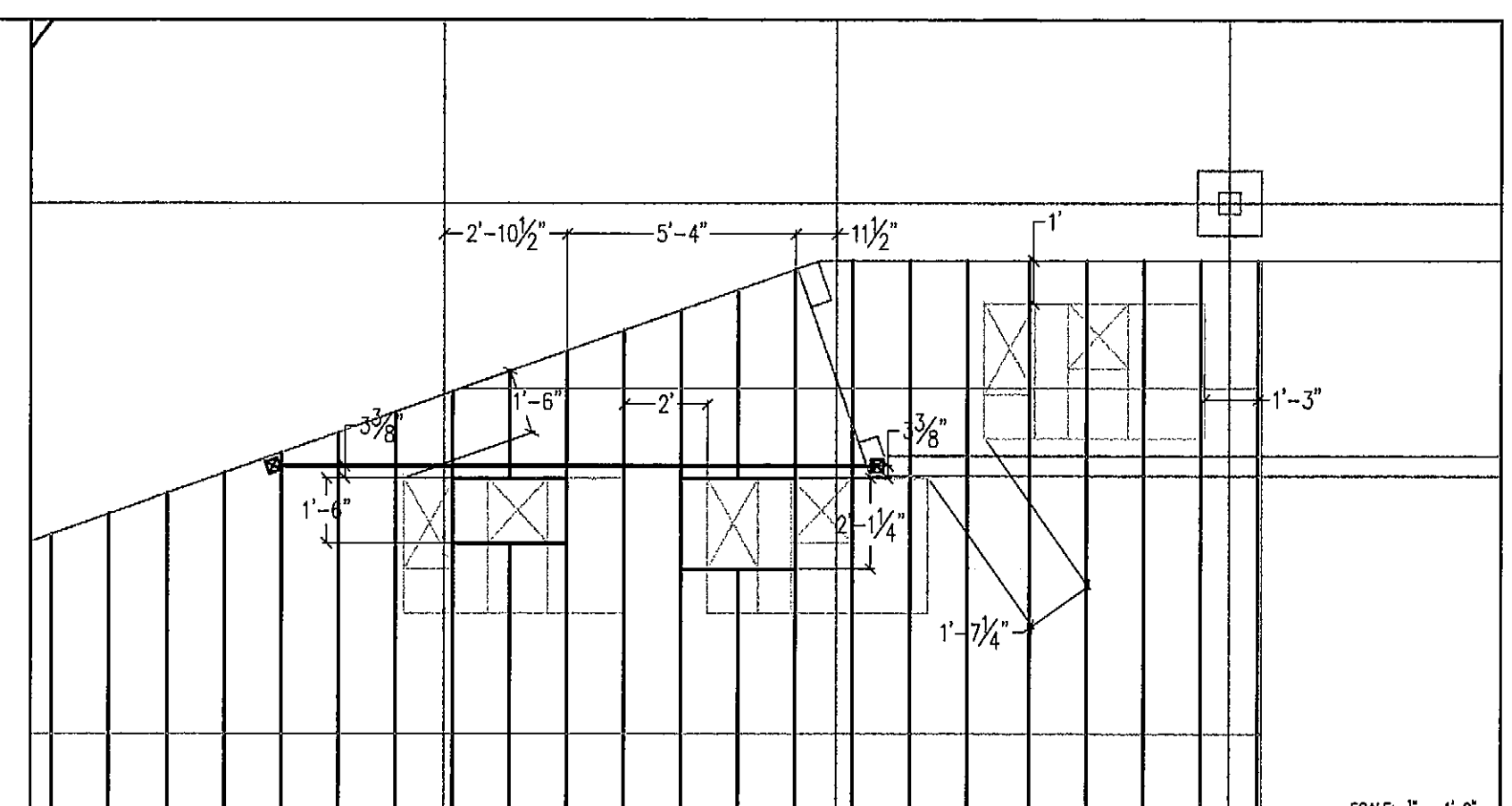
PRINT STATUS:
 CONSTRUCTION DOCUMENTS
 BIDDING PRINT
 8/06/07

S-210

MECHANICAL
 LEVEL PLAN



LOAD PLAN



PARTIAL PLAN

SCALE: 1" = 1' 0"