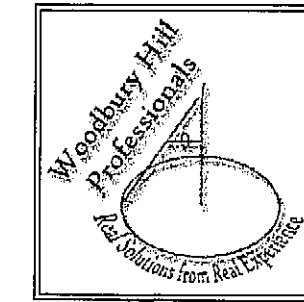
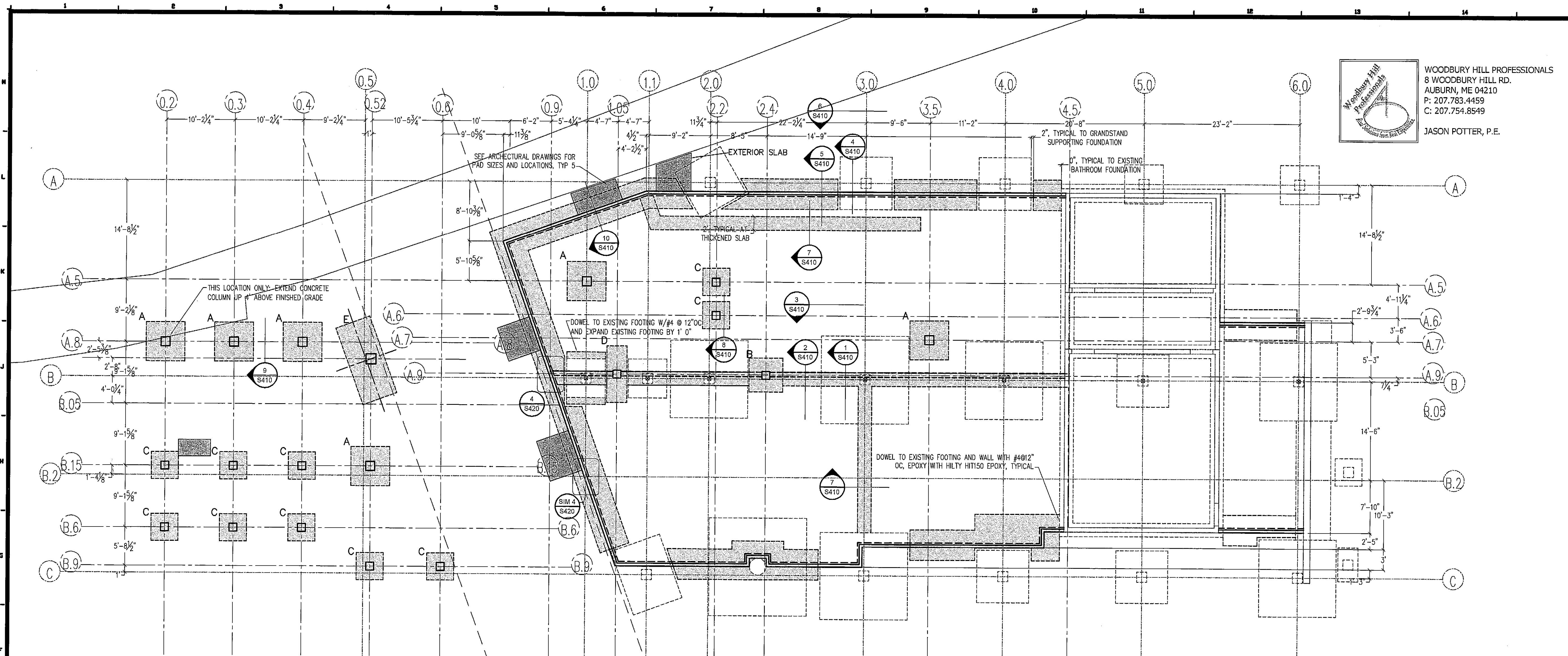


PO BOX 301
FREEPORT, MAINE
04032

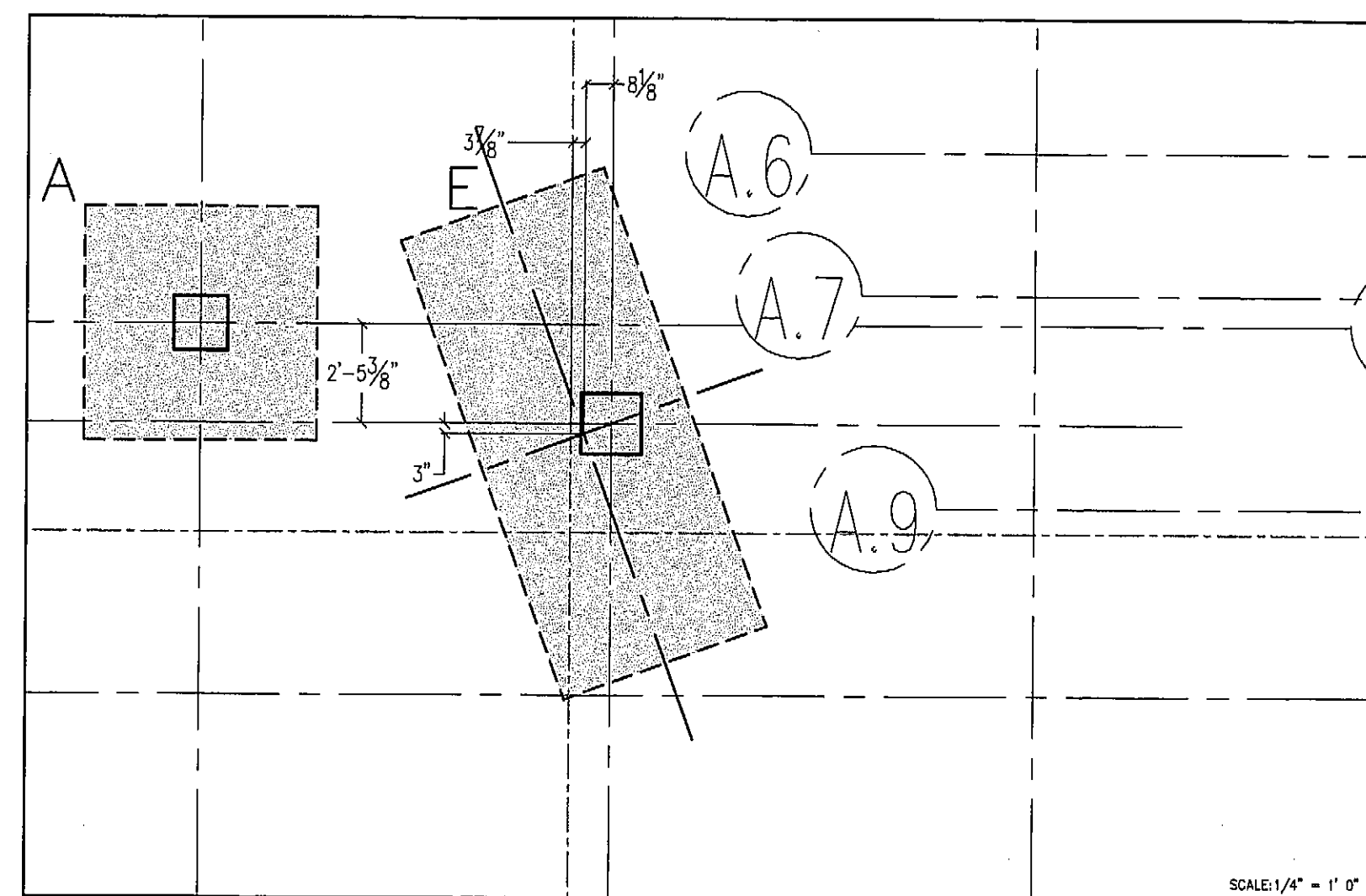
TEL 207-865-1272
FAX 207-865-XXXX
WWW.DOMUSARCHITECTS.NET



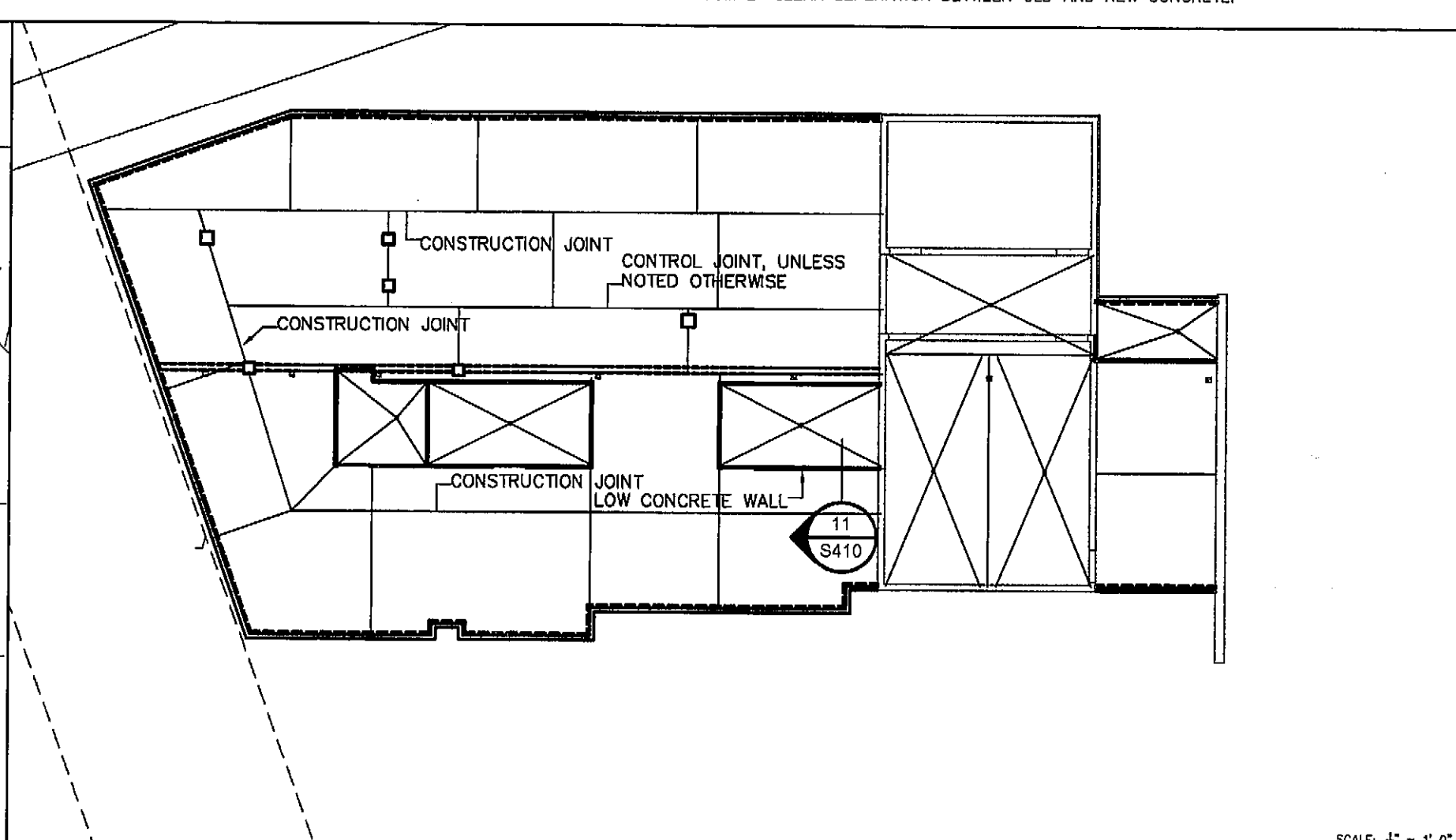
WOODBURY HILL PROFESSIONALS
8 WOODBURY HILL RD.
AUBURN, ME 04210
P: 207.783.4459
C: 207.754.8549
JASON POTTER, P.E.



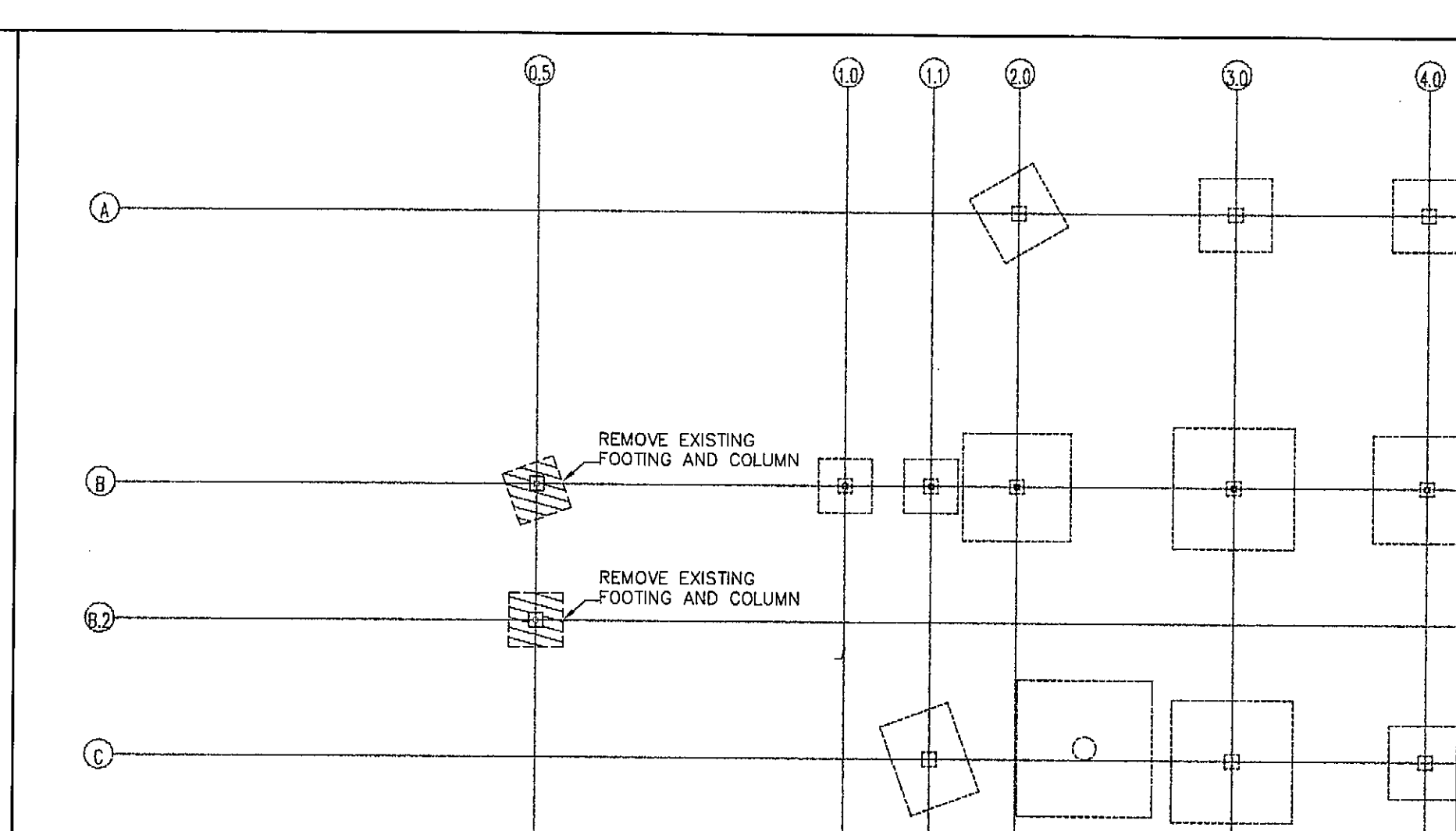
FOOTING SCHEDULE:
STRIP FOOTINGS
PERIMETER - 3'-6" WIDE X 1'-0" THICK W/FOUR #4 LONGWISE AND #4 @ 18" OC CROSSWISE.
INTERIOR BEARING WALLS - 2'-0" WIDE X 1'-0" THICK W/TWO #4
SPREAD FOOTINGS
A FOOTING - 5'-9"x5'-9"x1'-6" THICK W/SEVEN #6 EACH WAY 3" FROM BOTTOM
PIER - 16"x16" WITH FOUR #8 BARS VERTICAL AND #4 STIRRUPS @ 12" OC
B FOOTING - 5'-0"x5'-0"x1'-3" THICK W/SIX #6 EACH WAY 3" FROM BOTTOM
PIER - 14"x14" WITH FOUR #7 BARS VERTICAL AND #4 STIRRUPS @ 12" OC
C FOOTING - 4'-0"x4'-0"x1'-2" THICK W/THREE #6 EACH WAY 3" FROM BOTTOM
PIER - 14"x14" WITH FOUR #7 BARS VERTICAL AND #4 STIRRUPS @ 12" OC
D FOOTING - 3'-0"x8'-4"x1'-3" THICK W/FOUR #8 LONGWISE AND NINE #6 SHORTWISE 3" FROM TOP AND BOTTOM
PIER - 14"x14" WITH FOUR #7 BARS VERTICAL AND #4 STIRRUPS @ 12" OC
E FOOTING - 5'-4"x12'-0"x2'-0" THICK W/SIX #8 LONGWISE AND THIRTEEN #6 SHORTWISE 3" FROM TOP AND BOTTOM
PIER - 18"x18" WITH FOUR #9 BARS VERTICAL AND #4 STIRRUPS @ 12" OC
NOTE: KEEP MINIMUM 2" CLEAR SEPARATION BETWEEN OLD AND NEW CONCRETE.



PARTIAL PLAN



SLAB PLAN



FOUNDATION DEMOLITION PLAN

NOTES/ REVISIONS

-
-
-
-
-
-
-
-
-
-
-
-
-
-
-
-
-
-
-
-

PORTLAND
SEA DOGS
CLUB HOUSE

HADLOCK FIELD
PORTLAND, ME

PRINT STATUS:
CONSTRUCTION DOCUMENTS
BIDDING PRINT
8/06/07

S-110

FOUNDATION
PLAN

