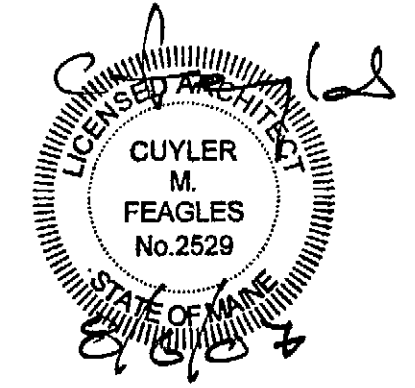


NOTE:

1. SEE SHEET T-1 FOR LEGEND, ABBREVIATIONS & GENERAL NOTES.

DOMUS ARCHITECTS

PO BOX 301
FREEPORT, MAINE
04032



TEL 207-865-1272
FAX 207-865-XXXX
WWW.DOMUSARCHITECTS.NET

NOTES/ REVISIONS

- _____
- _____
- _____
- _____
- _____
- _____
- _____
- _____
- _____
- _____
- _____
- _____

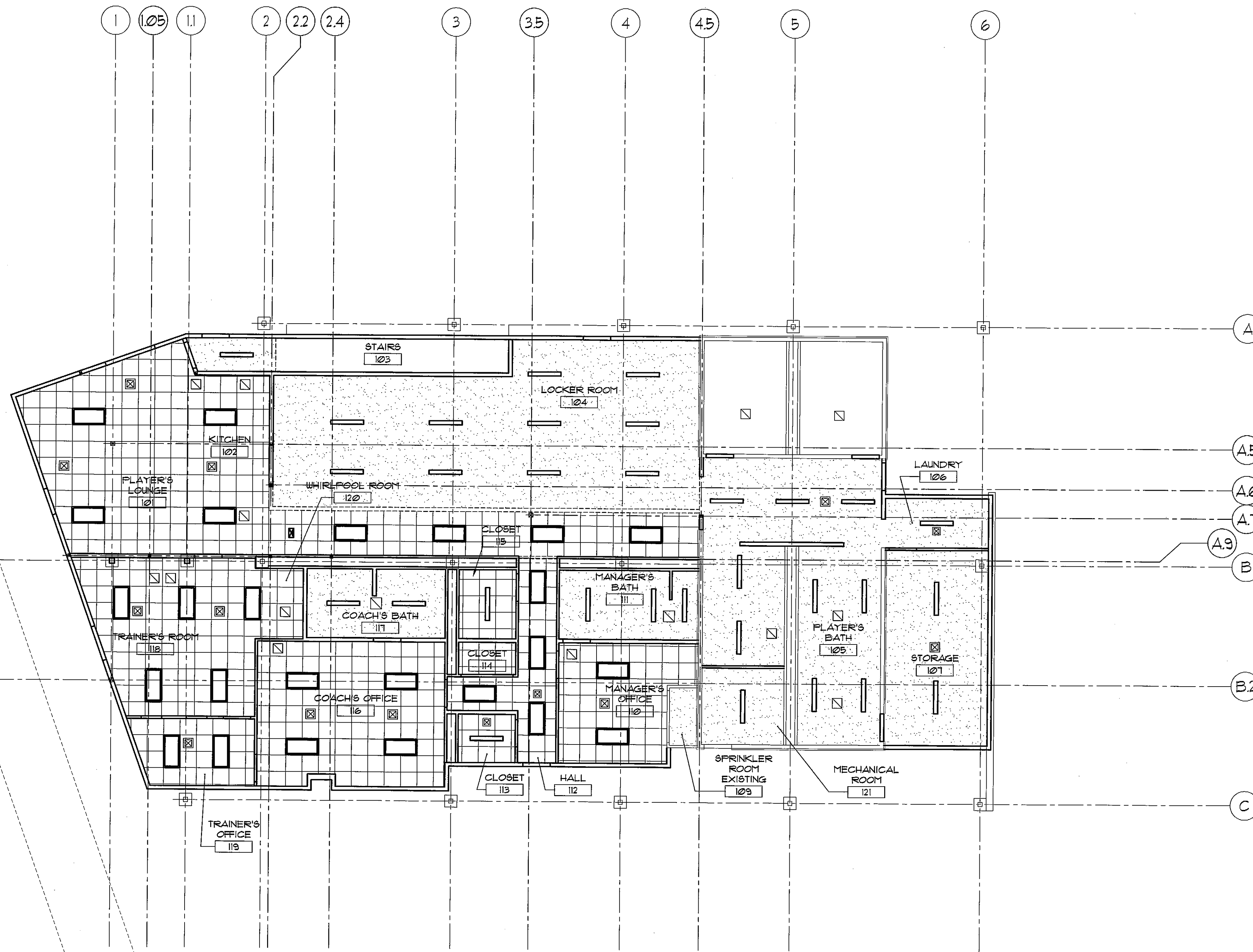
**PORTLAND
SEA DOGS
CLUB HOUSE**

HADLOCK FIELD
PORTLAND, ME

ISSUED FOR
CONSTRUCTION
8/6/07

AE-150

**FIRST FLOOR
REFLECTED CEILING
PLAN**



AE150 FIRST FLOOR REFLECTED CEILING PLAN
SCALE: 1/8" = 1'-0"

