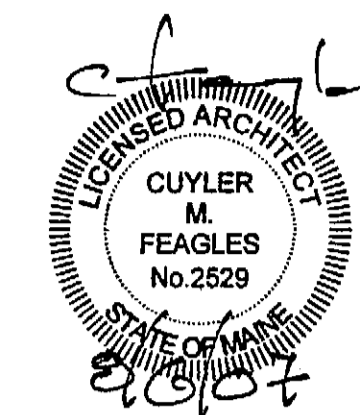


PO BOX 301
FREEPORT, MAINE
04032



TEL 207-865-1272
FAX 207-865-XXXX
WWW.DOMUSARCHITECTS.NET

NOTES/ REVISIONS

-
-
-
-
-
-
-
-
-
-
-
-
-
-

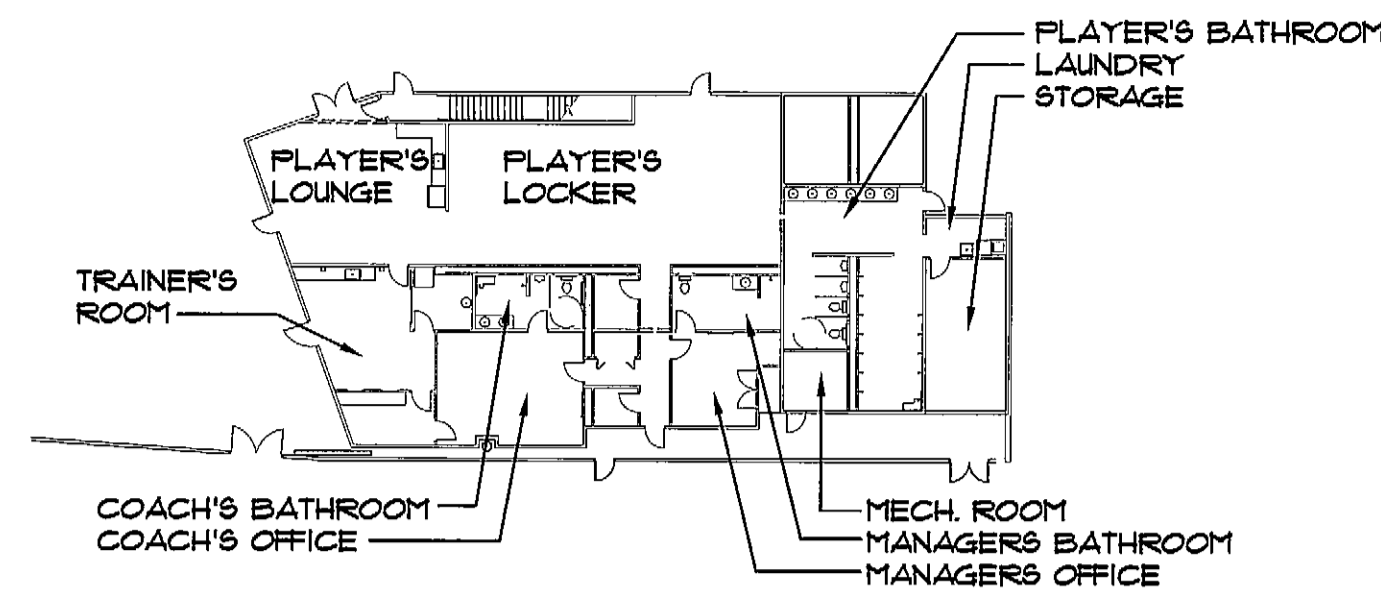
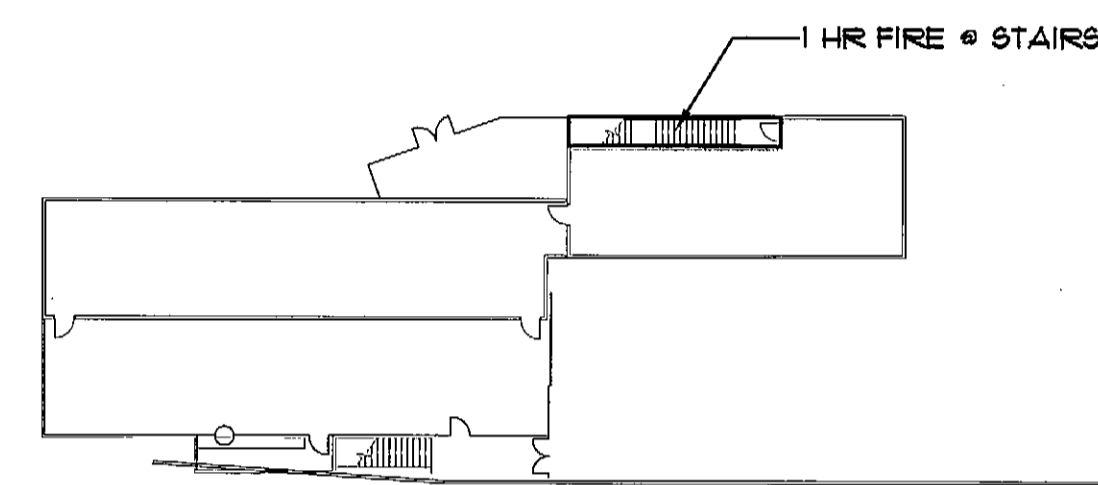
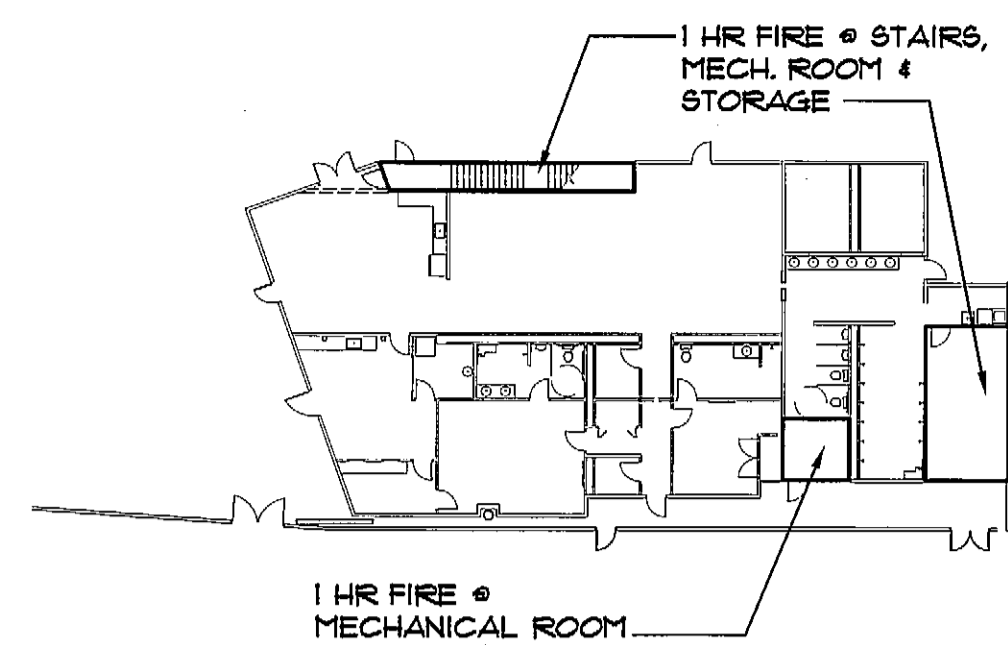
PORTLAND
SEA DOGS
CLUB HOUSE

HADLOCK FIELD
PORTLAND, ME

ISSUED FOR
CONSTRUCTION
8/6/07

A-100

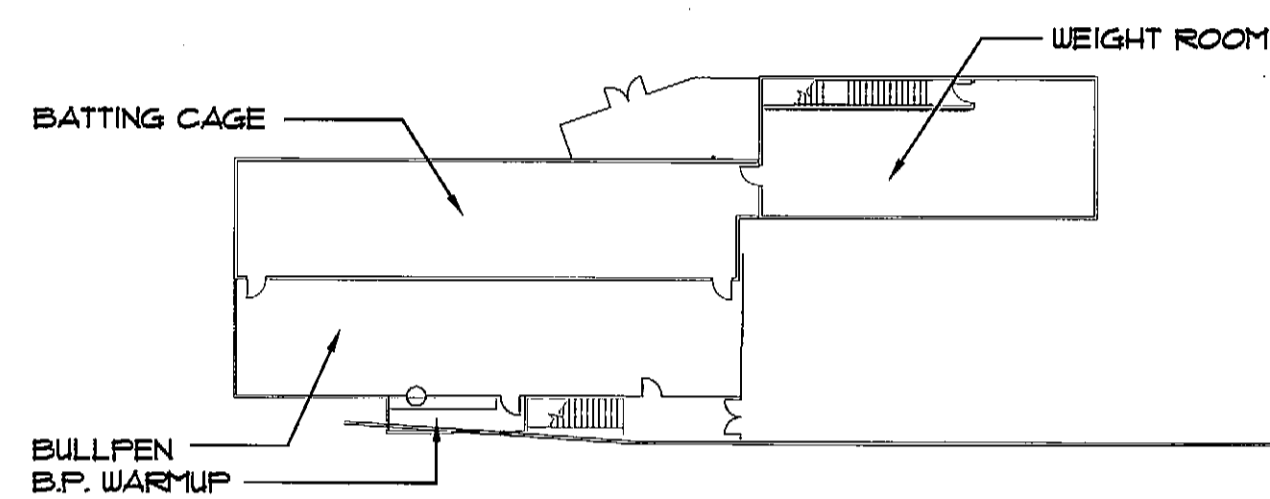
CODE COMPLIANCE
DIAGRAMS



FIRST FLOOR OCCUPANCY LOAD

ROOM	SQUARE FEET	OCCUPANCY LOAD: SF/ PERSON	OCCUPANCY
LOUNGE	638	15	43
LOCKER ROOM	938	50	20
PLAYER'S BATHROOM	650	50	13
LAUNDRY	15	100	1
STORAGE	300	300	1
MECHANICAL ROOM	128	50	1
MANAGER'S BATHROOM	140	50	3
MANAGER'S OFFICE	344	100	4
COACH'S OFFICE	353	100	3
COACH'S BATHROOM	118	50	3
TRAINER'S ROOM	550	50	11

TOTAL FIRST FLOOR OCCUPANCY: 103

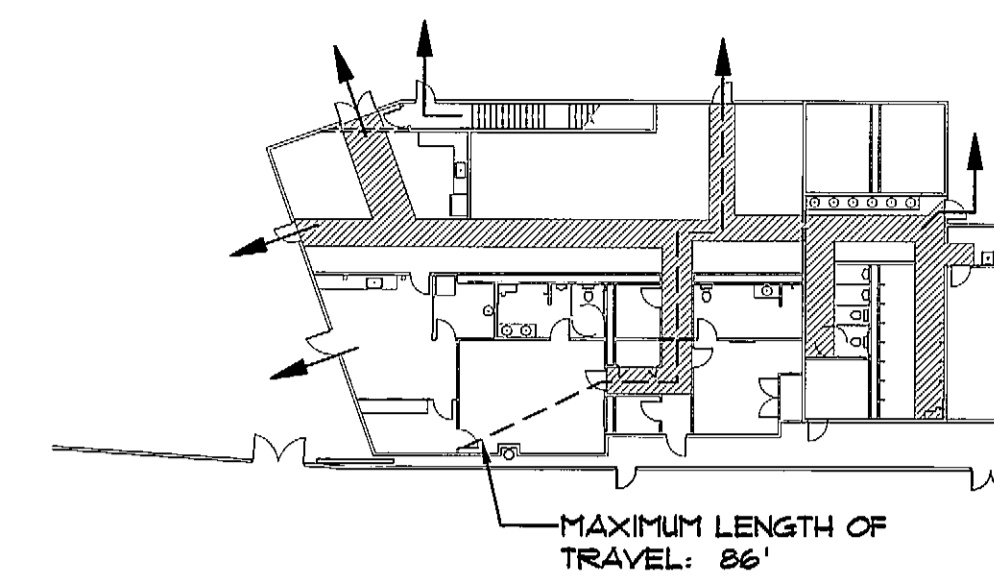


SECOND FLOOR OCCUPANCY LOAD

ROOM	SQUARE FEET	OCCUPANCY LOAD: SF/ PERSON	OCCUPANCY
WEIGHT ROOM	1335	50	27
BATTING CAGE	1404	50	28
BULLPEN	1404	50	28
BULLPEN WARMUP	111	50	2

TOTAL SECOND FLOOR OCCUPANCY: 85

TOTAL BUILDING OCCUPANCY: 190



LEGEND

- ▨ EGRESS ROUTING
- ➔ EGRESS DISCHARGE

CONSTRUCTION TYPES, FIRE WALLS & SMOKE BARRIERS

SCALE: 1"= 30'-0"

OCCUPANT LOADS

SCALE: 1"= 30'-0"

EGRESS PATH & EXIT DISCHARGE

SCALE: 1"= 30'-0"

PRINCIPLE APPLICABLE CODES:

I.O PRINCIPLE CODES, STANDARDS, AND REVIEW
AUTHORITIES APPLICABLE TO PROJECT

FIRE:
NFPA INCLUDING 101 LIFE SAFETY CODE, 2003 EDITION
STATE FIRE MARSHAL'S OFFICE, STEVEN DODGE
PHONE: (207)624-8744 FAX: (207)624-8767

PORTLAND FIRE DEPARTMENT, FIRE CHIEF,
CAPTAIN GREG CASS
PHONE: (207)874-8405 FAX: (207)874-8410

BUILDING:
A. ICC BUILDING CODE, 2003 EDITION
PORTLAND CODE ENFORCEMENT OFFICER,
JEANIE BOURKE
PHONE: (207)874-8703

ACCESSIBILITY:
ADA ACCESSIBILITY GUIDELINES FOR BUILDINGS AND FACILITIES.

MAINE HUMAN RIGHTS ACT, ANSI A117.1 - 1986
STATE FIRE MARSHAL'S OFFICE, STEVEN DODGE
PHONE: (207)624-8744 FAX: (207)624-8767

MECHANICAL:
A. INTERNATIONAL MECHANICAL CODE, 2003 EDITION

PLUMBING:
A. THE UNIFORM PLUMBING CODE, 2003 EDITION

AUTOMATIC SPRINKLER SYSTEM:
A. STATE FIRE MARSHAL'S OFFICE, STEVEN DODGE
PHONE: (207)624-8744 FAX: (207)624-8767

ENERGY:
INTERNATIONAL ENERGY CODE, 2004 EDITION

ELECTRICAL:
NATIONAL ELECTRICAL CODE, NFPA 70, 2005 EDITION

GENERAL BUILDING OVERVIEW:

NEW CLUBHOUSE UNDERNEATH EXISTING GRANDSTAND STRUCTURE.

BUILDING TYPE:
ASSEMBLY WITH MINOR OFFICE & STORAGE SPACE.

CONSTRUCTION TYPE:
TYPE V-A (IBC 2003)
TYPE V-III (NFPA 220 2006)
WOOD FRAME, PROTECTED

ALLOWABLE #STORIES: 2
ACTUAL #STORIES: 2

ALLOWABLE HEIGHT: 50'
ACTUAL HEIGHT: 29'

ALLOWABLE FLOOR AREA: 11,500 SF/ FLOOR
ACTUAL FLOOR AREA: FIRST FLOOR: 5,285 SF
SECOND FLOOR: 2,480 SF
TOTAL SF: 7,764 SF

NOTE: The second floor area listed above does not include the bullpen, which is unenclosed.

NOTE: the actual areas listed above do not include allowable increases, for road frontage & the inclusion of a sprinkler system, to which the building is entitled, because the building falls under maximum allowable areas without those increases.

MINIMUM AGGREGATE EGRESS DOOR WIDTH,
FIRST FLOOR (103x0.2): 20.6"
ACTUAL AGGREGATE EGRESS DOOR WIDTH: 177"

MINIMUM# EGRESS DOORS (FIRST FLOOR): 2
ACTUAL# EGRESS DOORS: 4
NOTE: This does not include the door leading to the playing field

MAXIMUM ALLOWABLE TRAVEL DISTANCE: 250'
ACTUAL MAXIMUM TRAVEL DISTANCE: 86'