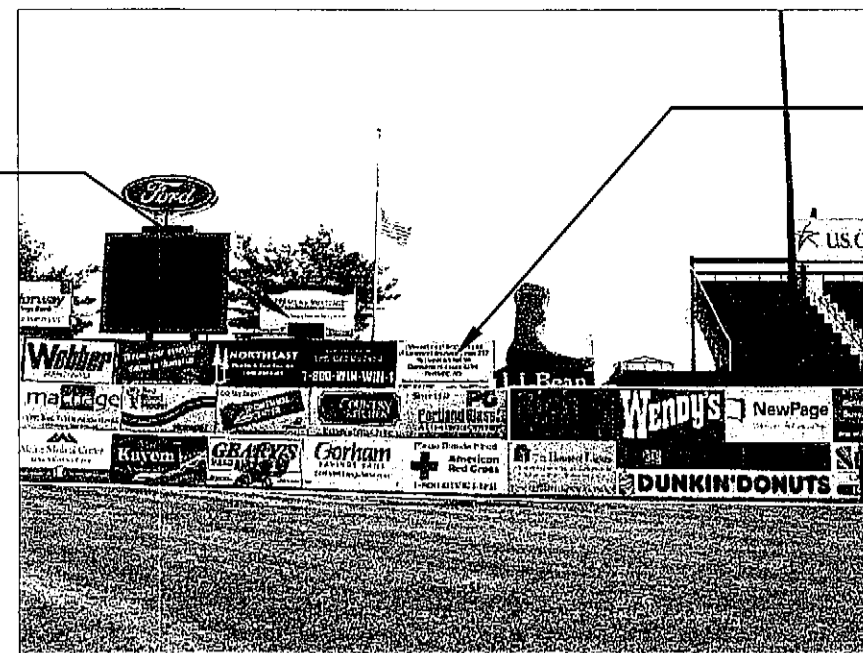




REMOVE SECOND TIER OF BACKWALL & SUPPORTS AS REQUIRED. REMOVE NO MORE THAN NECESSARY.



REMOVE METAL COLUMNS & SIGNAGE FOR "MAINE MORTGAGE" BILLBOARD



REMOVE THIRD TIER OF BACKWALL & SUPPORTS AS REQUIRED. REMOVE NO MORE THAN NECESSARY.



NOTES:

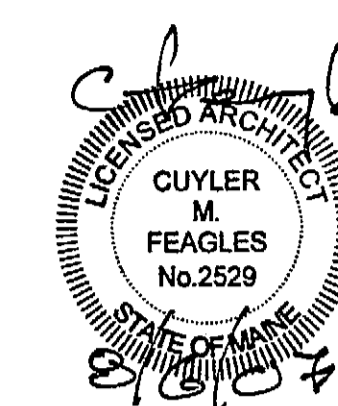
- SEE SHEET T-1 FOR LEGEND, ABBREVIATIONS & GENERAL NOTES.
- REFERENCE D-100 FOR NOTES & SALVAGE NOTES.

DEMOLITION KEYED NOTES:

- REMOVE EXISTING METAL ROOF AS REQUIRED FOR INSTALLATION OF NEW ROOF. EXISTING SHEATHING TO REMAIN IN PLACE.
- REMOVE EXISTING CHAIN LINK FENCE.
- REMOVE EXISTING PLATFORM BETWEEN COLUMN LINES 05 & 1.

DOMUS ARCHITECTS

PO BOX 301
FREEPORT, MAINE
04032



TEL 207-865-1272
FAX 207-865-XXXX
WWW.DOMUSARCHITECTS.NET

NOTES/ REVISIONS

- _____
- _____
- _____
- _____
- _____
- _____
- _____
- _____
- _____

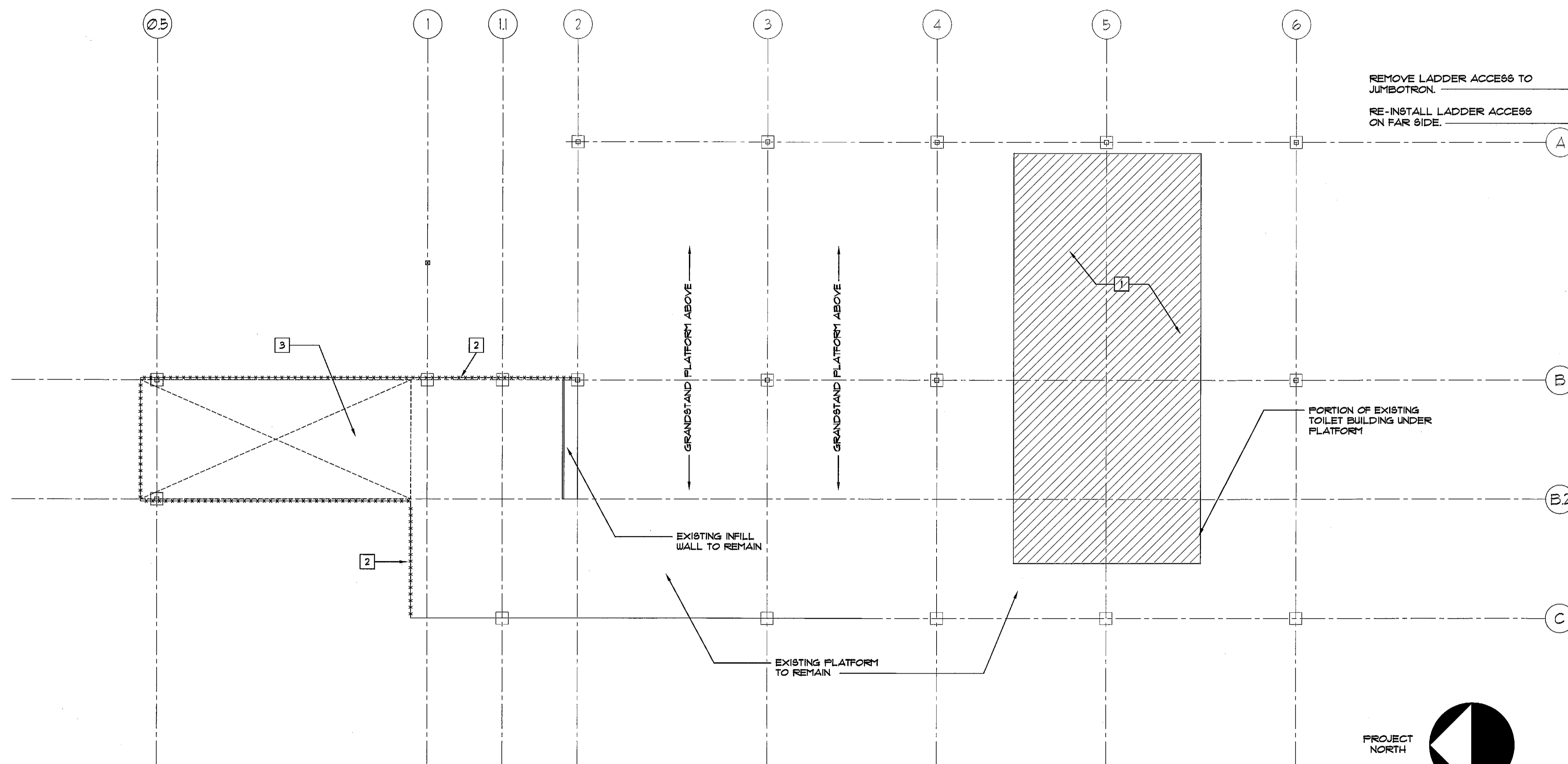
**PORTLAND
SEA DOGS
CLUB HOUSE**

HADLOCK FIELD
PORTLAND, ME

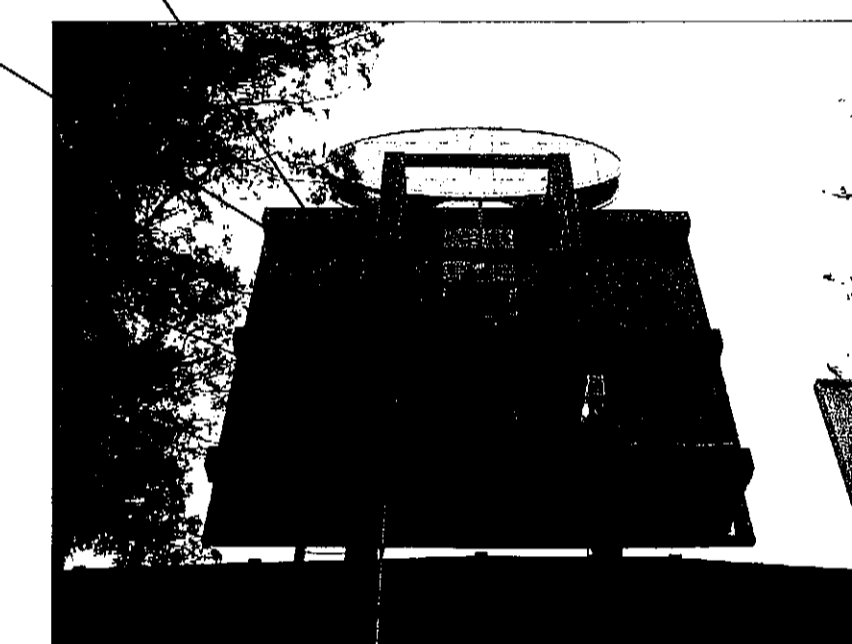
ISSUED FOR
CONSTRUCTION
8/6/07

D-200

**UPPER LEVEL
DEMOLITION PLAN**



REMOVE LADDER ACCESS TO JUMBOTRON.
RE-INSTALL LADDER ACCESS ON FAR SIDE.



A1 UPPER LEVEL DEMOLITION PLAN
D200 SCALE: 1/8"= 1'-0"