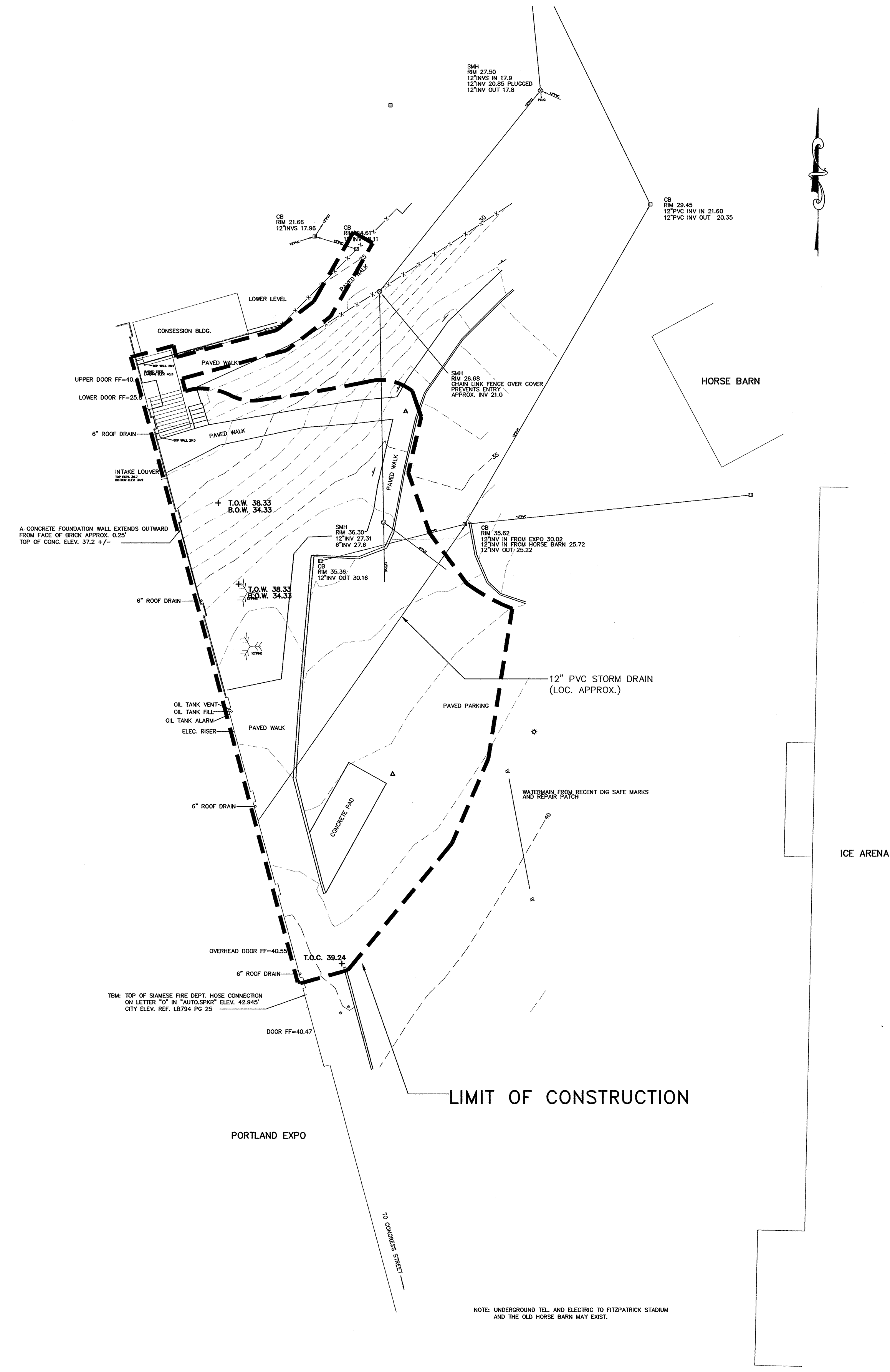
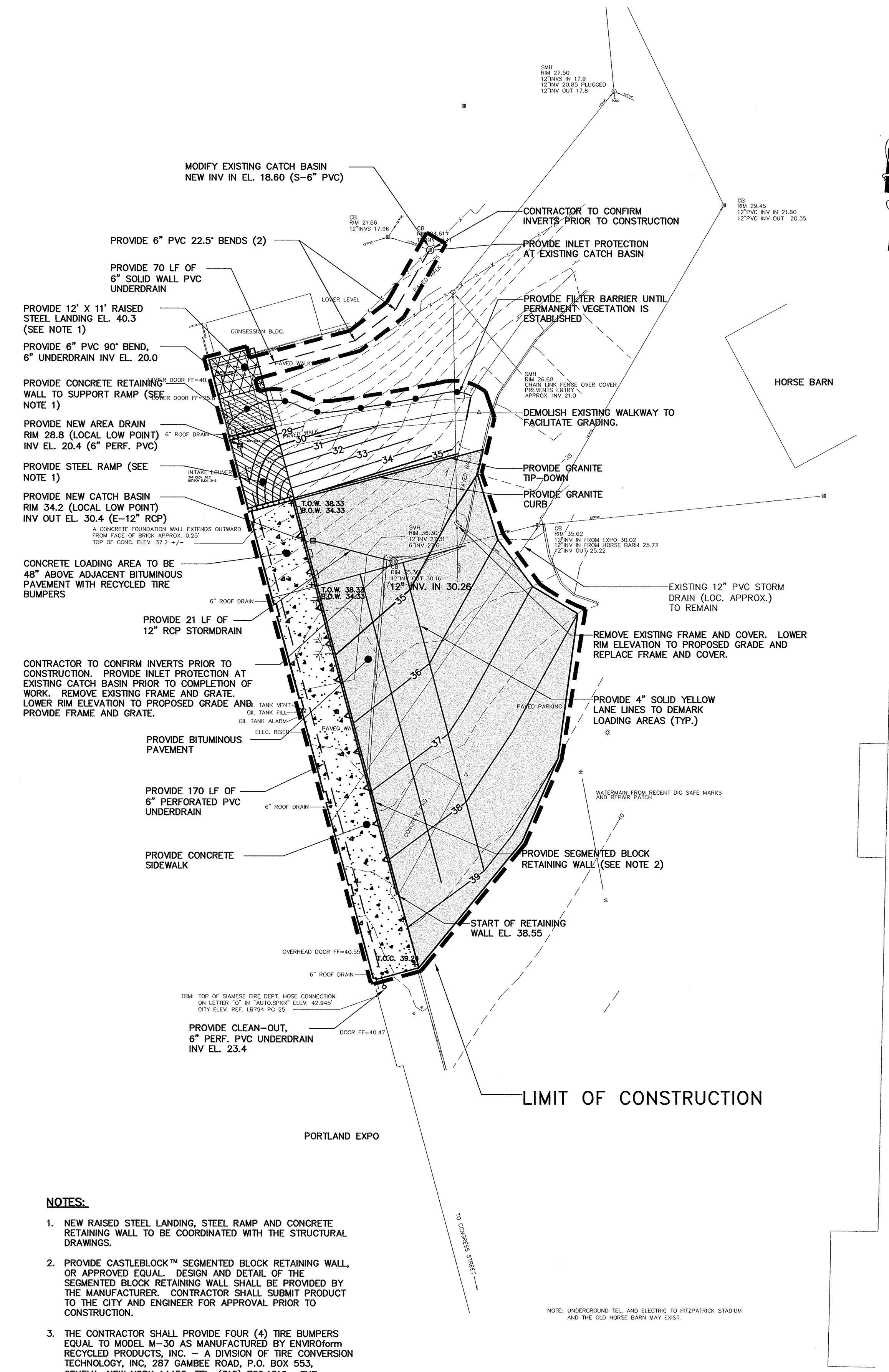


C:\203848 City of Portland-General Engineering Services\wp\_99 Portland Expo\Drawings\Design\20384899-C201.dwg, Feb 18, 2009 - 4:12pm



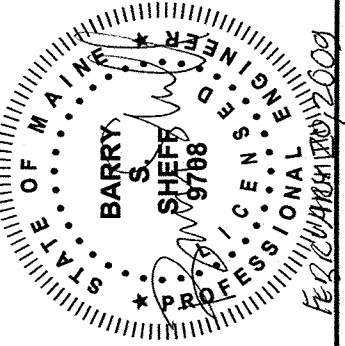
**EXISTING SITE PLAN**  
SCALE: 1" = 20'



**PROPOSED SITE PLAN**  
SCALE: 1" = 20'

- NOTES:**
1. NEW RAISED STEEL LANDING, STEEL RAMP AND CONCRETE RETAINING WALL TO BE COORDINATED WITH THE STRUCTURAL DRAWINGS.
  2. PROVIDE CASTLEBLOCK™ SEGMENTED BLOCK RETAINING WALL, OR APPROVED EQUAL. DESIGN AND DETAIL OF THE SEGMENTED BLOCK RETAINING WALL SHALL BE PROVIDED BY THE MANUFACTURER. CONTRACTOR SHALL SUBMIT PRODUCT TO THE CITY AND ENGINEER FOR APPROVAL PRIOR TO CONSTRUCTION.
  3. THE CONTRACTOR SHALL PROVIDE FOUR (4) TIRE BUMPERS EQUAL TO MODEL M-30 AS MANUFACTURED BY ENVIROform RECYCLED PRODUCTS, INC. - A DIVISION OF TIRE CONVERSION TECHNOLOGY, INC., 287 GAMBEE ROAD, P.O. BOX 553, GENEVA, NEW YORK 14456. TEL: (315) 789-1810. THE BUMPERS SHALL BE "BATTLESHIP GRAY" IN COLOR. EACH BUMPER SHALL BE INSTALLED WITH 3/16 S.S. HILT HLC SLEEVE ANCHORS, VERIFY NUMBER AND SLEEVE DIAMETER WITH BUMPER MANUFACTURER. INFILL BEHIND BUMPER WITH HIGH STRENGTH NON-SHRINK GROUT AS REQUIRED TO CREATE FLUSH MOUNTING SURFACE. THE FINAL LOCATION SHALL BE AS DIRECTED BY THE CITY OF PORTLAND IN THE LOADING DOCK AREA.

41 HUTCHINS DRIVE  
PORTLAND, MAINE 04102  
800.426.4262 | www.woodardcurran.com  
COMMITMENT & INTEGRITY DRIVE RESULTS



REV	DESCRIPTION	DATE
02/20/09	REVISED FOR BID	
05/20/07	ISSUED FOR BID	

CHECKED BY: RMS  
DESIGNED BY: KRV  
DRAWN BY: KRV/BCM  
20384899-C201.dwg

**EXISTING AND PROPOSED  
SITE PLANS**

CITY OF PORTLAND  
PORTLAND, MAINE

PORTLAND EXPO  
DRAINAGE IMPROVEMENTS

JOB NO.: 203848.98  
DATE: AUGUST 2007  
SCALE: 1" = 20'  
SHEET: 1 OF 5

**C-01**

THIS DOCUMENT IS THE PROPERTY OF WOODARD & CURRAN INC. AND ITS CLIENT. REPRODUCTION OR MODIFICATION WITHOUT WRITTEN PERMISSION IS PROHIBITED.