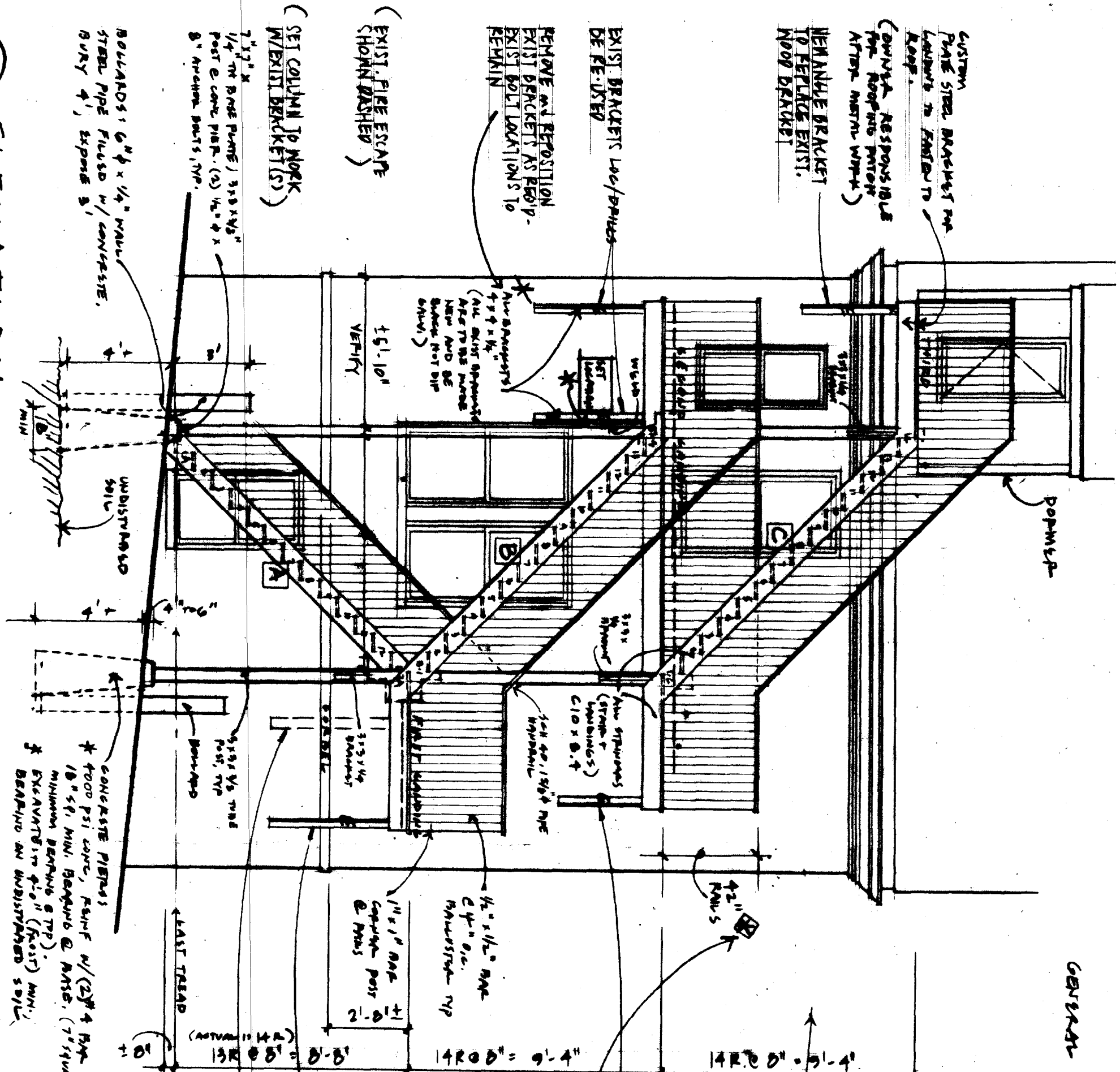


1 ELEVATION
1/4" = 1'-0"



GENERAL NOTES: *

THIS PROJECT REPLACES AN EXISTING DECAYED WOODEN FIRE ESCAPE WITH AN ALL STEEL W/TF. LAYOUT IS SUBSTANTIALLY UNCHANGED. FINISH IS TO BE HOT DIP BLACK GALVANIZED
EXISTING FIRE ESCAPE HANDS OFF BUILDING NEW ONE WILL DO A COMBINATION OF HANG W/ BRACKETS + BEAR DIRECTLY ON 2 NEW COLUMNS.

* FOOTPRINT OF REPLACEMENT STAIR IS THE SAME SIZE - OR SMALLER THAN - EXISTING WOODEN STAIRS

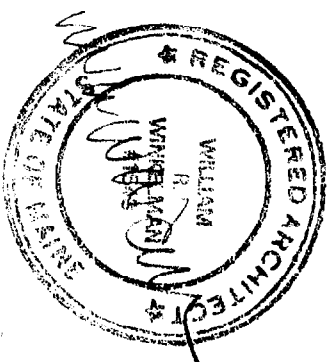
STL CAPRG TOP OF POSTS, TYP.

* RE ALL EXISTING BRACKETS: ALL ARE TO BE MADE NEW OF 4x4x1/4" L HOT DIP BLACK GALV. AS USE EXIST BRACKETS THRU-DRILLS OF NEW 'WASHERS' ON INTERIOR (1/8" x 5" x 1/8" MIN)

EXIST BRACKET LOC/DRILLS REUSED

RAILS ARE DRAWN TO 42" BODY 99' APPLICATION FOR REDUCTION OF RAILS TO 36" (AS FIRE ESCAPE - EXISTING - CURRENTLY IS) PER 'HISTORIC PRESERVATION EXEMPTIONS', (E BOTH STAIRS + LANDINGS)

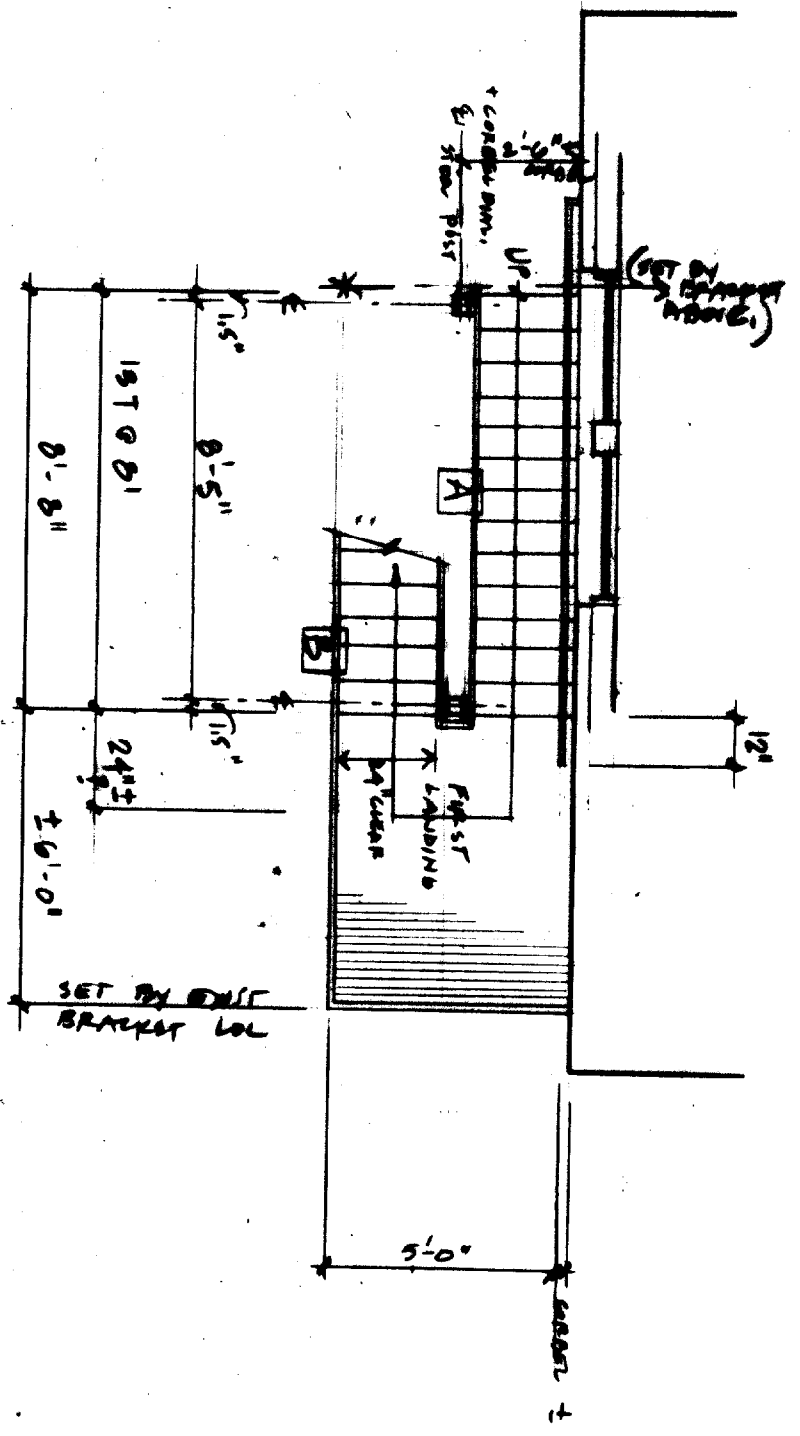
(CONNECTION NOTES - SHEET 4)
NEW FASTENERS TO BRICK ARE TO BE 3/4" x 8" EPOXY ANCHORS



REPLACEMENT FIRE ESCAPE
12.16.03

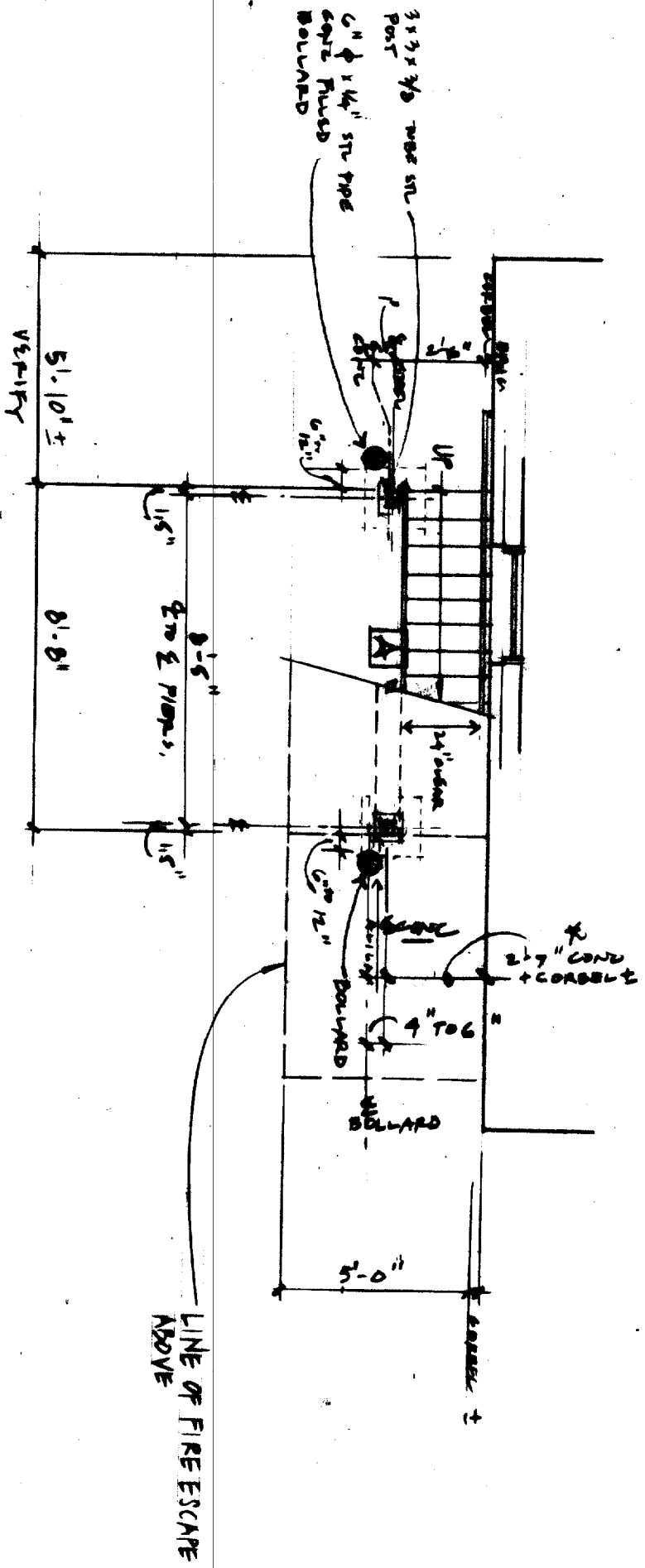
3

PLAN @ 1ST FLOOR
1/4" = 1'-0"



2

PLAN @ GRADE
1/4" = 1'-0"



2

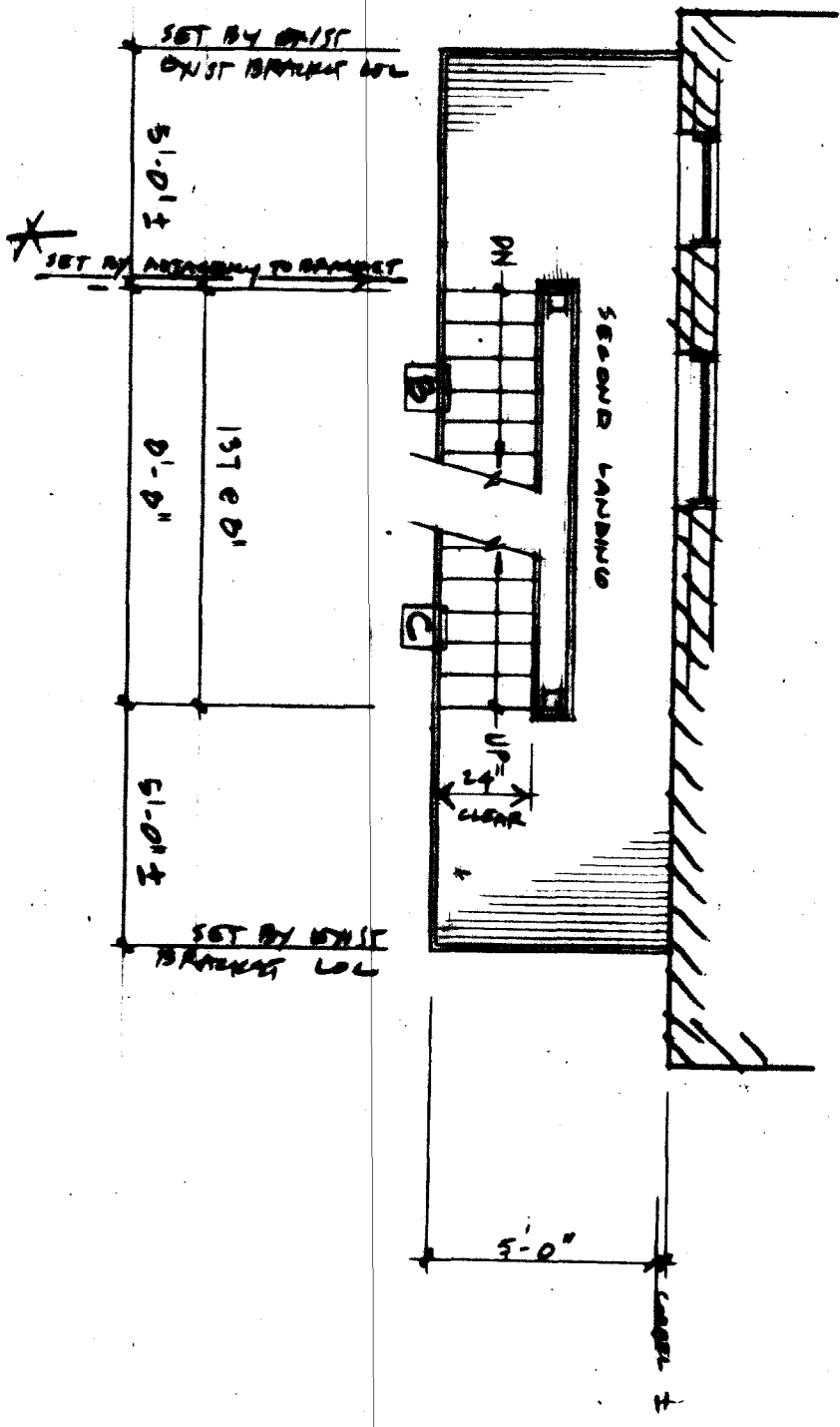
REPLACEMENT FIRE ESCAPE
12.16.03

501 CUMBERLAND AVE, PORTLAND

WHITTEN ARCHITECTS: 774.0111 x102

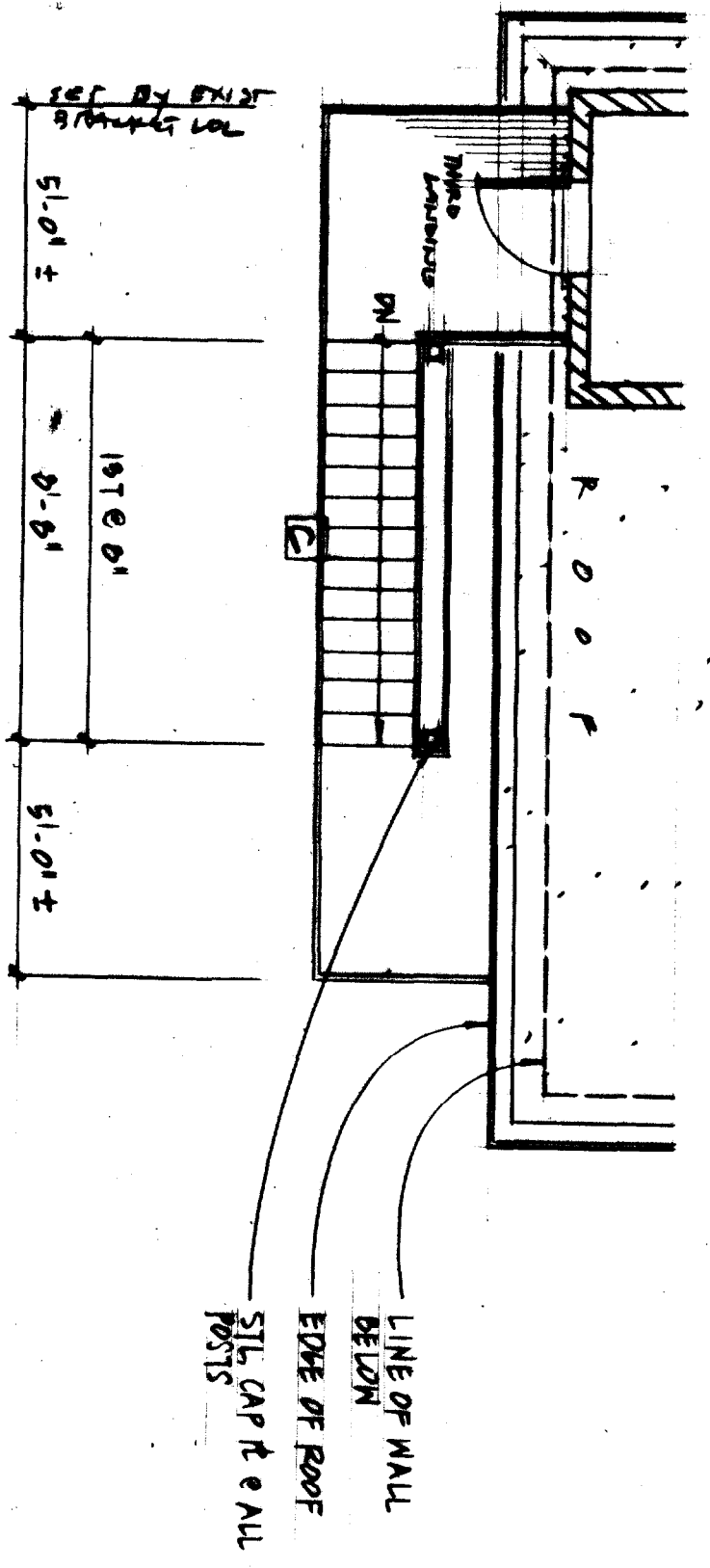
4

PLAN @ 2ND FLOOR
1/4" = 1'-0"



5

PLAN @ 3RD FLOOR
1/4" = 1'-0"

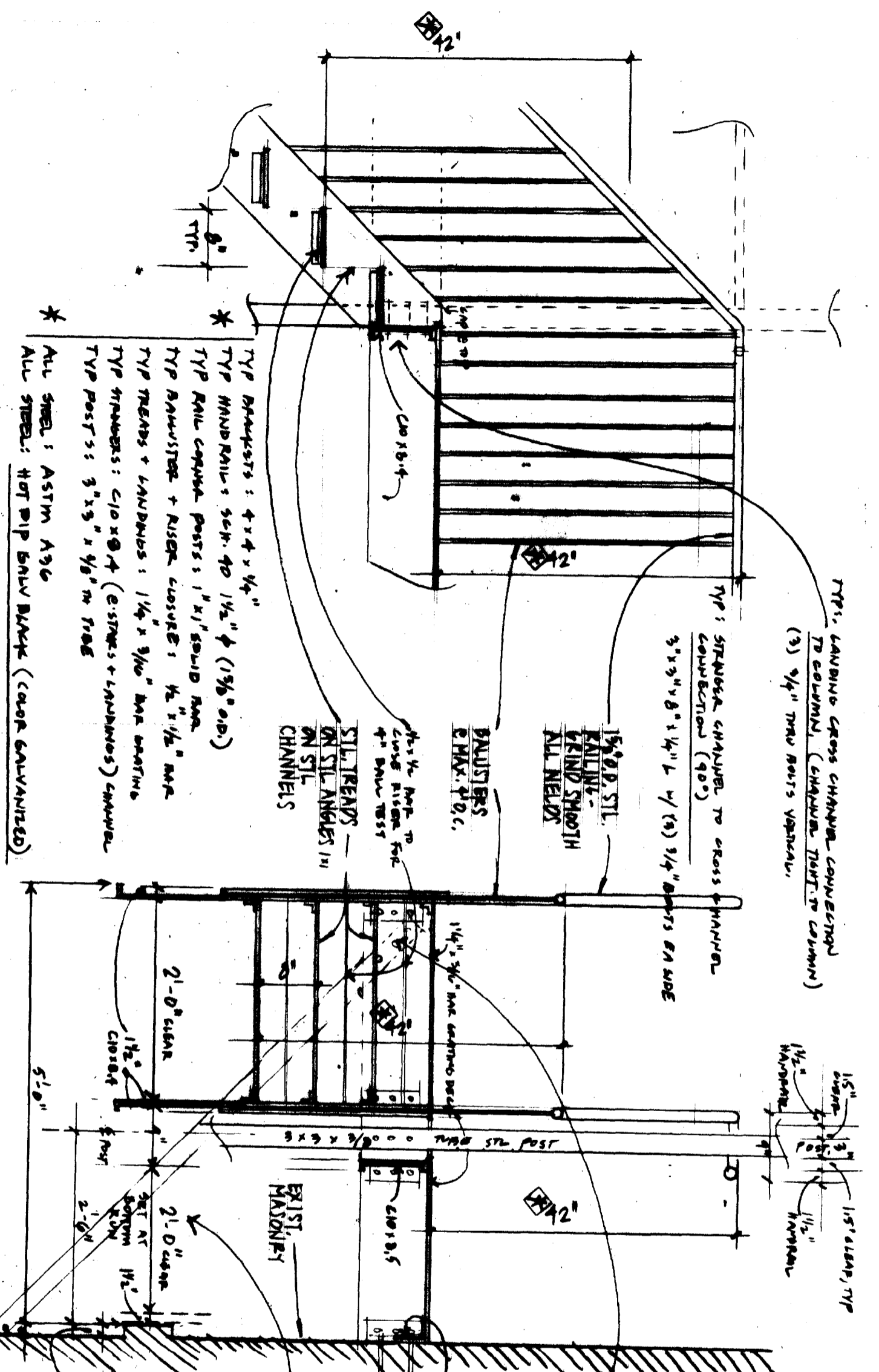


3

REPLACEMENT FIRE ESCAPE
12.16.03

SECTION 6
3/4" = 1'-0"

SECTION 7
3/4" = 1'-0"



- * TYP BRACKETS: 4x4 x 1/4"
- * TYP HANDRAILS: 5/8" φ TO 1 1/2" φ (1 3/8" O.D.)
- * TYP RAIL CAPRA POSTS: 1" x 1" SOLID RAIL
- * TYP RAUUSTOR + RISER CLOSURE: 1/2" x 1/2" RAIL
- * TYP TRENDS + LANDINGS: 1 1/4" x 3/16" BAR W/RAIL
- * TYP STRADDLERS: C10 x 8.4 (EXISTING + LANDINGS) CHANNEL
- * TYP POSTS: 3" x 3" x 1/8" IN TUBE
- * ALL STEEL: ASTM A36
- * ALL STEEL: HOT DIP GALV BLACK (COLOR GALVANIZED)

BRACKET CONNECTIONS:

- (3) 3/4" φ BOLTS @ STRUT TO CROSS CHANNEL
- (2) 3/4" φ RAYS DIA STRUT TO VERTICAL LEG ON WALLS IF EXIST THRU-ROU LOCATION, RE USE W/ NEW BOLT + WASHW (CORROD DISAPPEAR) NEW: MIN (4) EQ. SPACED 3/4" φ x 8" EPXY ANCHOR BOLTS
- 4x4 x 1/4" LANGE L. SET W/ 3/4" φ x 8" EPXY ANCHOR IN MASONRY @ 90° OR

NOTE RE 2'-0" CLEAR:

- BACK 1015.3.1
- ALLOWS FIRE ESCAPES TO BE AS NARROW AS 12"

MINIMUM PROJECTION OF BRACKET CORNER - VERIFY @ WORK ANSE

REPLACEMENT FIRE ESCAPE
12.16.03

4