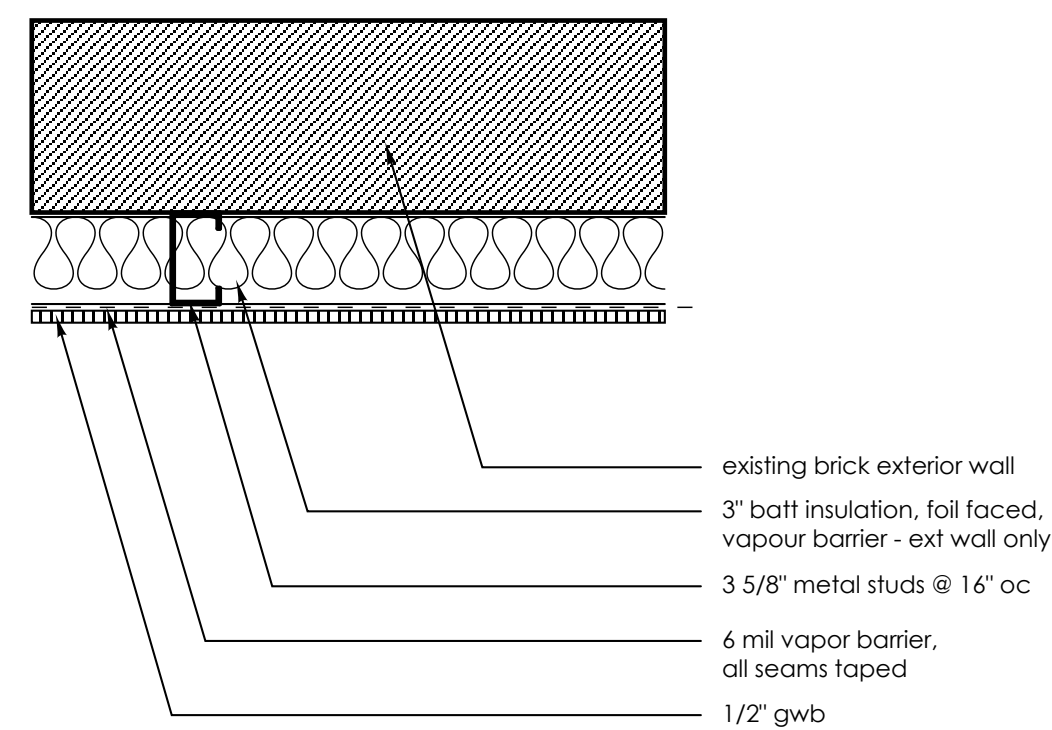
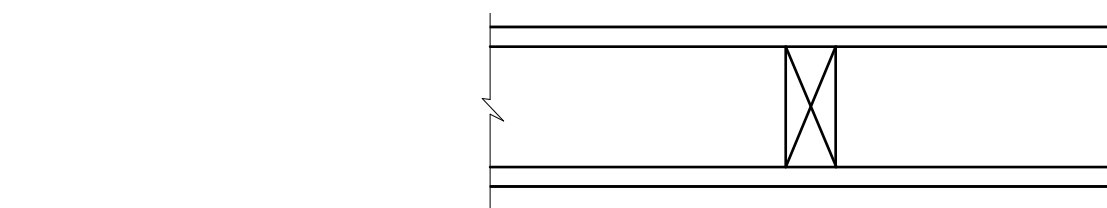


**1** INTERIOR PARTITION  
NOT RATED

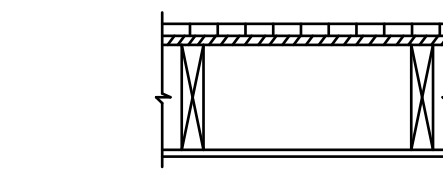


**2** MASONRY WALL



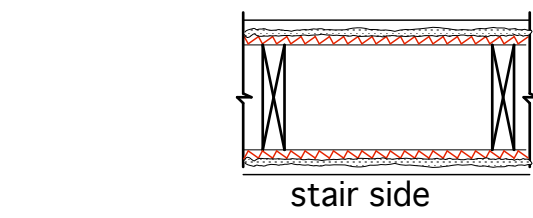
**f1** 1 HOUR RATED WOOD PARTITION

- 5/8"(15.9mm)Fire-Shield Gypsum Wallboard or 5/8" 38 NGC 2404
- UL U309 (15.9mm)Fire-Shield MR Board nailed both sides
- GA WP 3510 2x4(38 mm x 89 mm)studs,24"o.c.(610 mm).



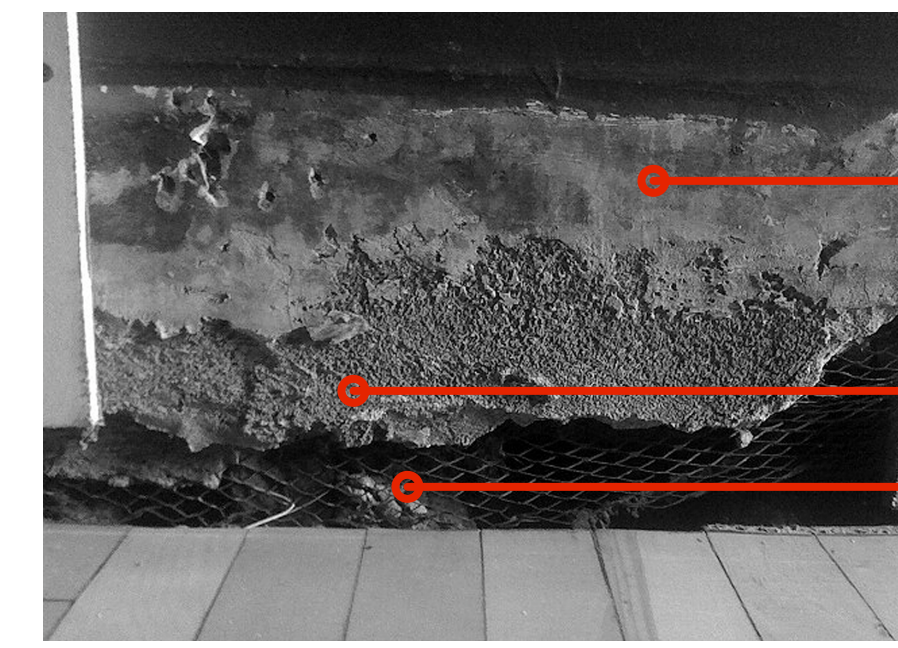
**f2** 1 HOUR RATED CEILING ASSEMBLY

- UL L522 1/2"(12.7mm)Fire-Shield G Gypsum Wallboard nail attached to 2 x 10(38mm x 241mm) wood joists spaced 16"o.c.(406mm). UL design L522 permits option of floor topping over plywood.
- GA FC 5410

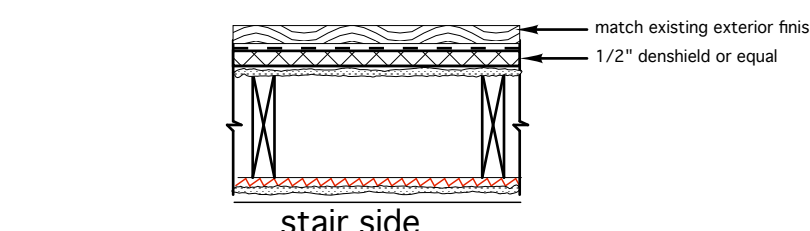


**f4** 1 HOUR RATED WALL ASSEMBLY  
existing plaster wall system

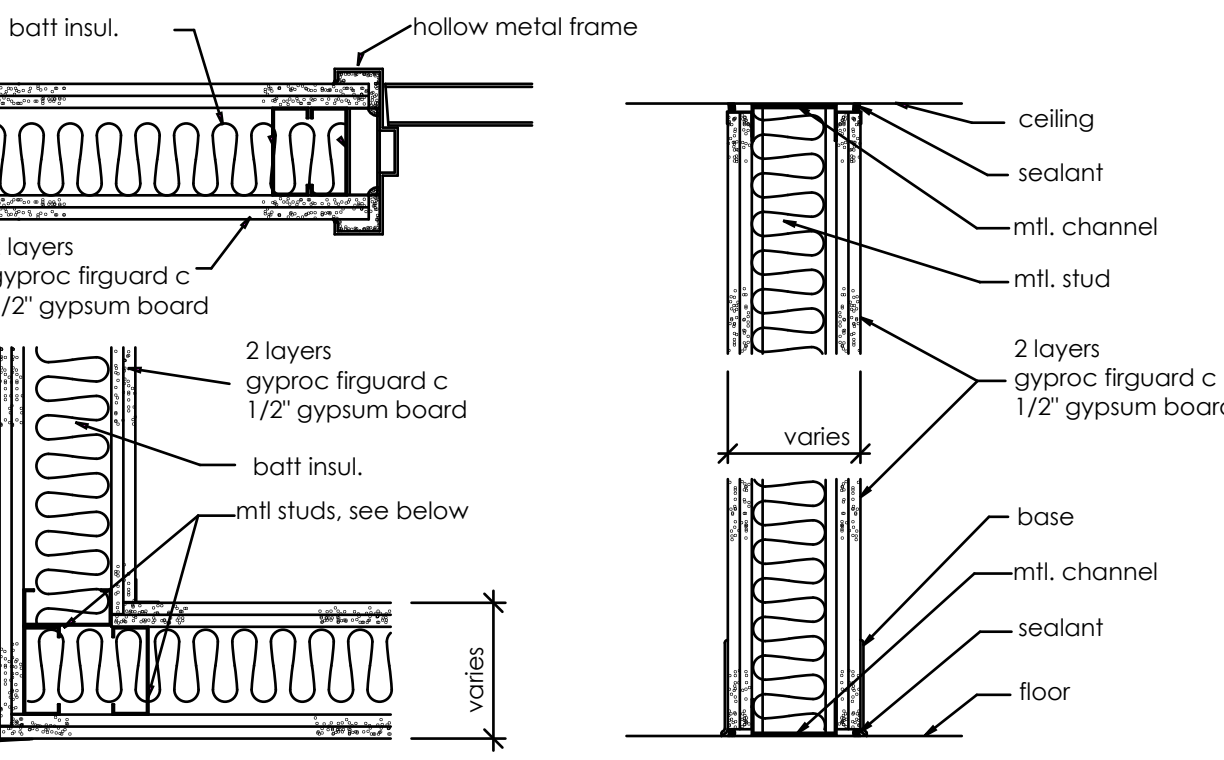
- UL 315 Metal Lath-- 3/8", diamond mesh expanded steel Plaster Scratch Coat and Brown Coat 2x4 ≈16"o.c. wood studs: verify fire stopped
- DESIGN U315 similar



**f4** existing plaster wall system typical  
SEE UL 315

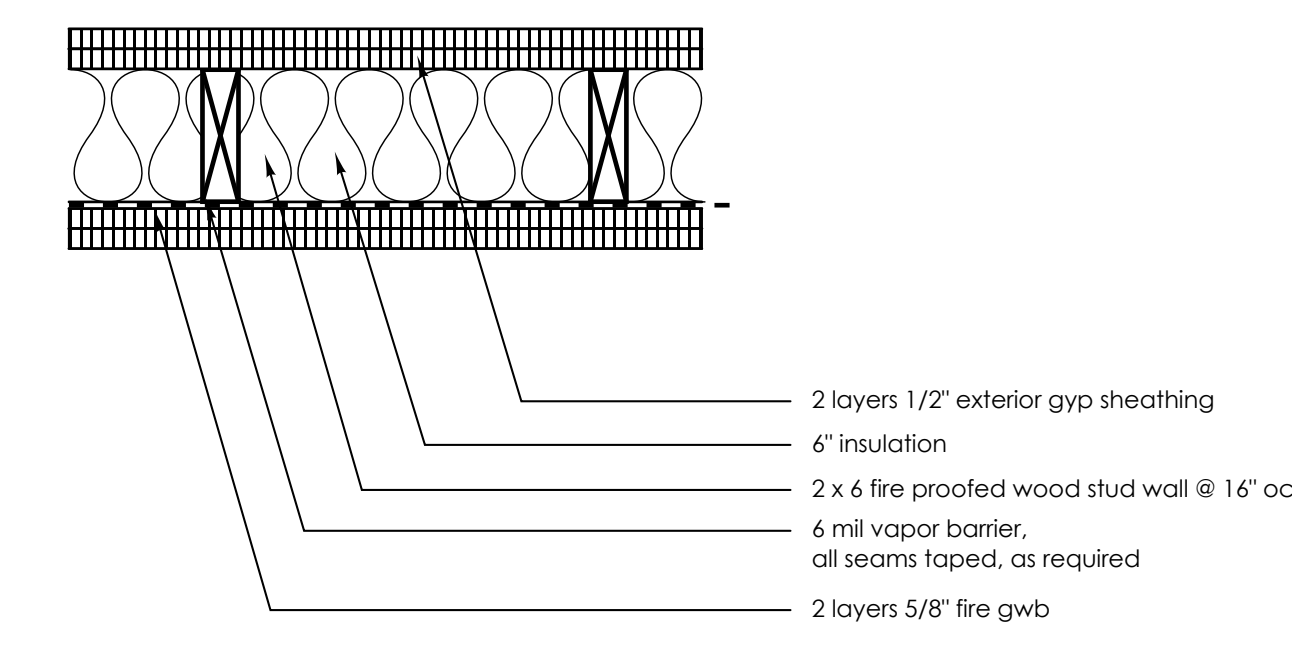


**f5** WALL ASSEMBLY AT EXTERIOR WALL

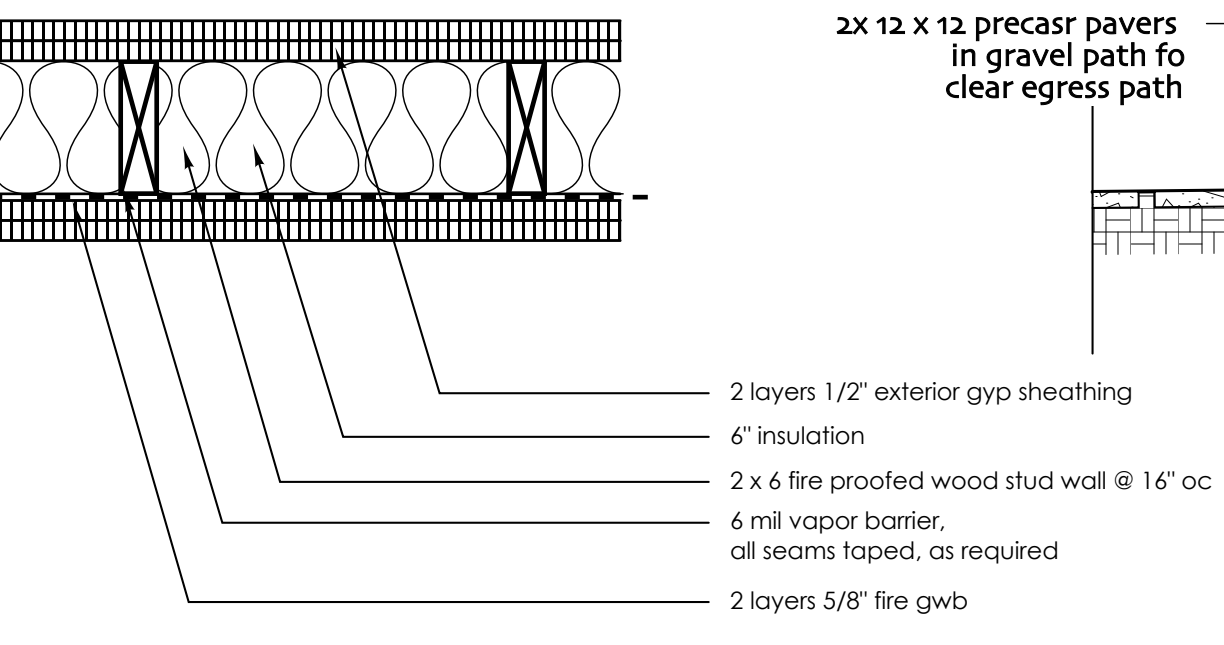


**f2.1** 2 HOUR RATED METAL PARTITION  
(6", 3 5/8", 2 1/2" mtl. studs, see drawings)

- FIRE TEST : DESIGN U412
- STC : 53
- SOUND TEST : NGC 2385

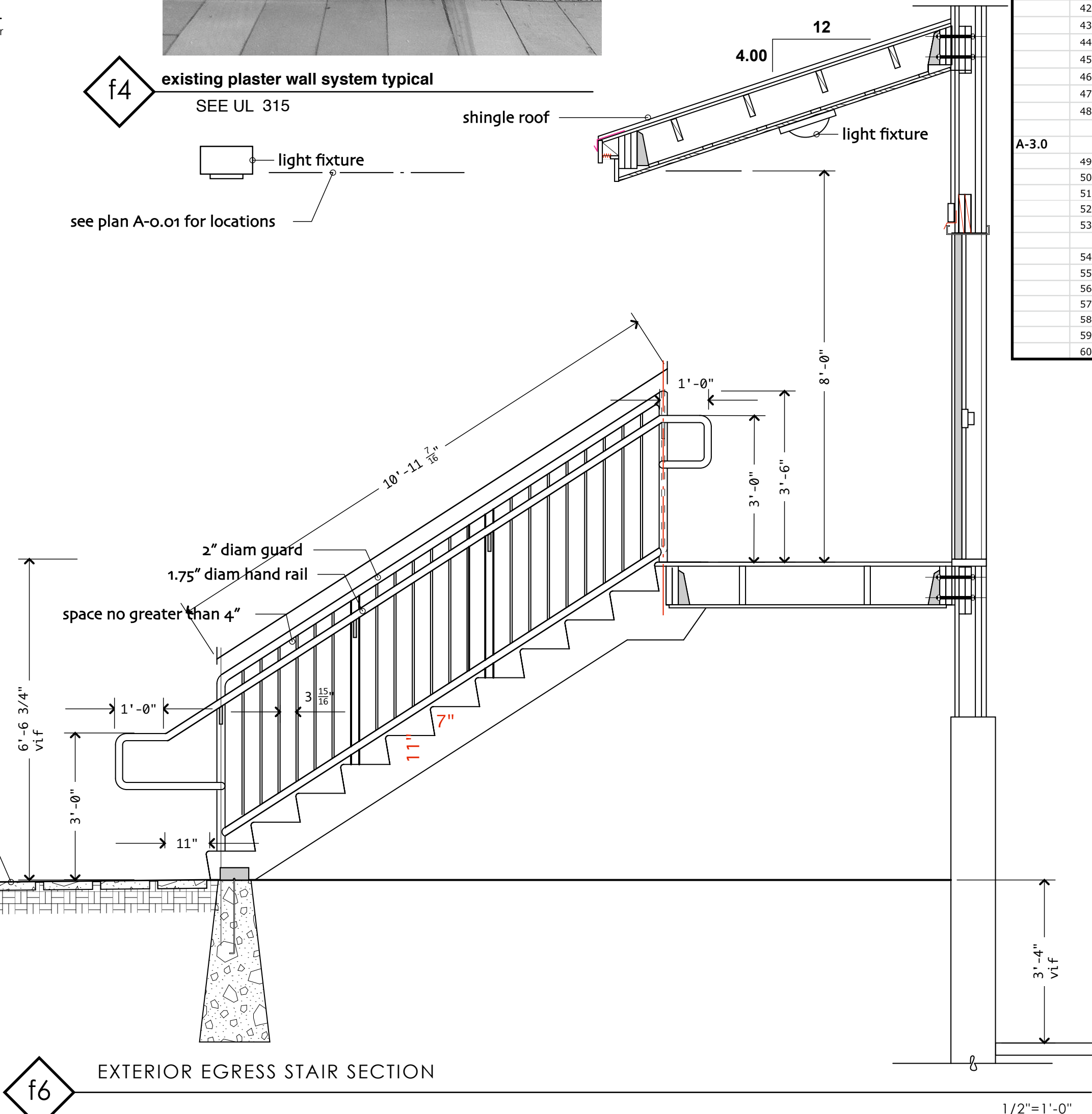


**f3** 2 HOUR RATED AT EXISTING PLASTER LATHE WALL



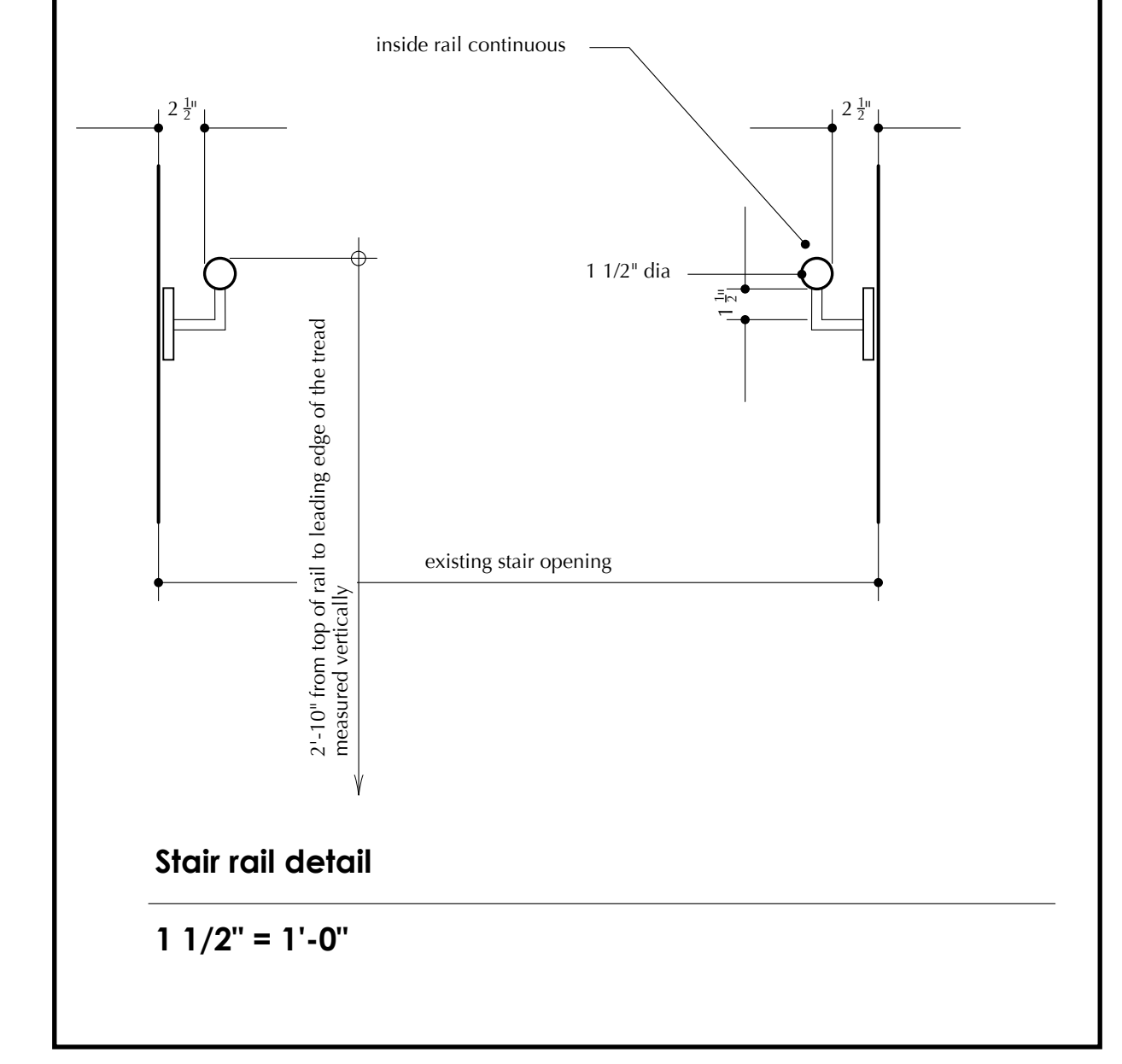
**f2.2** 2 HOUR RATED LOAD BEARING WALL

- FIRE TEST : DESIGN U349 similar



**f6** EXTERIOR EGRESS STAIR SECTION

sheet	#	door	size	hardware	location	comment
A-0.01	1	552/3-0.01 DR 1.0	3-0" x 6'8"	10	electrical rm	new 1hr rated door slab and frame
	2	552/3-0.01 DR 1.1	3-0" x 6'8"	10	storage	new 1hr rated door slab and frame
	3	552/3-0.01 DR 1.2	3-0" x 6'8"	10	oil tanks rm	new 1hr rated door slab and frame
	4	552/3-0.01 DR 1.3	3-0" x 6'8"	10	basement	new 1hr rated door slab and frame
	5	552/3-0.01 DR 1.4	3-0" x 6'8"	9	ext egress	new 1hr rated door slab and frame
	6	552/3-0.01 DR 1.5	3-0" x 6'8"	10	boiler rm	new 1hr rated door slab and frame
	7	552/3-0.01 DR 1.6	3-0" x 6'8"	9	ext egress	new 1hr rated door slab and frame
A-0.1	8	551-0.1 ST 1.0	3-0" x 6'8"	6	stair	new 1hr rated door slab and frame
	9	551-0.1 ST 1.1	3-0" x 6'8"	6	stair	new 1hr rated door slab and frame
	10	551-0.1 ST 1.2	3-0" x 6'8"	11	door to grade	push bar new 1hr rated door slab and frame
	11	551-0.1 APT 1	2'-8" x 6'8"	8	apartment/entry	match opening: new 1hr rated door slab and frame
	12	551-0.1 APT 2	2'-8" x 6'8"	8	apartment/entry	match opening: new 1hr rated door slab and frame
	13	552/3-0.1 ST 1.0	3-0" x 6'8"	11	grade entry	push bar new 1hr rated door slab and frame
	14	552/3-0.1 ST 1.1	3-0" x 6'8"	6	stair	new 1hr rated door slab and frame mag hold
	15	552/3-0.1 ST 1.2	3-0" x 6'8"	9	stair/exterior	push bar new 1hr rated door slab and frame
	16	552/3-0.1 ST 1.3	3-0" x 6'8"	6	stair	new 1hr rated door slab and frame mag hold
	17	552/3-0.1 ST 1.3	2'-8" x 6'8"	6	stair	new 1hr rated door slab and frame [locked] service stair only
	18	552/3-0.1 APT 1.0	2'-8" x 6'8"	8	apartment/entry	match opening: new 1hr rated door slab and frame
19	552/3-0.1 APT 1.1	2'-8" x 6'8"	8	apartment/entry	match opening: new 1hr rated door slab and frame	
20	552/3-0.1 APT 2	2'-8" x 6'8"	8	apartment/entry	match opening: new 1hr rated door slab and frame	
21	552/3-0.1 APT 3	2'-8" x 6'8"	8	apartment/entry	new 1hr rated door slab and frame [re locate door]	
22	552/3-0.1 APT 4	2'-8" x 6'8"	8	apartment/entry	match opening: new 1hr rated door slab and frame	
23	552/3-0.1 APT 5	2'-8" x 6'8"	8	apartment/entry	match opening: new 1hr rated door slab and frame	
A-1.0	24	551-1.0 ST 1.0	3-0" x 6'8"	11	door to grade	push bar new 1hr rated door slab and frame
	25	551-1.0 ST 1.1	3-0" x 6'8"	6	stair	new 1hr rated door slab and frame mag hold
	26	551-1.0 ST 1.2	3-0" x 6'8"	6	stair	new 1hr rated door slab and frame
	27	551-1.0 ST 1.3	2'-8" x 6'8"	6	stair	new 1hr rated door slab and frame [exist hall 39" width]
	28	551-1.0 APT 1	2'-8" x 6'8"	8	apartment/entry	match opening: new rated 1hr door slab and frame
	29	551-1.0 APT 1.1	2'-8" x 6'8"	8	apartment/entry	match opening: new 1hr rated door slab and frame
	30	552/3-1.0 ST 1.0	3-0" x 6'8"	6	stair	new 1hr rated door slab and frame
	31	552/3-1.1 ST 1.0	3-0" x 6'8"	6	stair	new 1hr rated door slab and frame
	32	552/3-0.1 APT 1	2'-8" x 6'8"	8	apartment/entry	match opening: new 1hr rated door slab and frame
	33	552/3-0.1 APT 2	2'-8" x 6'8"	8	apartment/entry	new 1hr rated door slab and frame [re locate door]
	34	552/3-0.1 APT 3	2'-8" x 6'8"	8	apartment/entry	new 1hr rated door slab and frame
35	552/3-0.1 APT 4	2'-8" x 6'8"	8	apartment/entry	new 1hr rated door slab and frame [re locate door]	
36	552/3-0.1 APT 5	2'-8" x 6'8"	8	apartment/entry	new 1hr rated door slab and frame [re locate door]	
A-2.0	37	551-2.0 ST 1.0	3-0" x 6'8"	6	stair	new 1hr rated door slab and frame
	38	551-2.0 ST 1.1	3-0" x 6'8"	6	stair	new 1hr rated door slab and frame
	39	551-2.0 ST 1.2	2'-8" x 6'8"	6	stair	new 1hr rated door slab and frame [exist hall 39" width]
	40	551-2.0 APT 1	2'-8" x 6'8"	8	apartment/entry	new 1hr rated door slab and frame
	41	551-2.0 APT 2	2'-8" x 6'8"	8	apartment/entry	new 1hr rated door slab and frame
	42	552/3-2.0 ST 1.0	3-0" x 6'8"	6	stair	new 1hr rated door slab and frame
	43	552/3-2.0 ST 1.1	3-0" x 6'8"	6	stair	new 1hr rated door slab and frame
	44	552/3-2.0 APT 1	2'-8" x 6'8"	8	apartment/entry	new 1hr rated door slab and frame
	45	552/3-2.0 APT 2	2'-8" x 6'8"	8	apartment/entry	new 1hr rated door slab and frame [re locate door]
	46	552/3-2.0 APT 3	2'-8" x 6'8"	8	apartment/entry	new 1hr rated door slab and frame
47	552/3-2.0 APT 4	2'-8" x 6'8"	8	apartment/entry	new 1hr rated door slab and frame [re locate door]	
48	552/3-2.0 APT 5	2'-8" x 6'8"	8	apartment/entry	new 1hr rated door slab and frame [re locate door]	
A-3.0	49	551-3.0 ST 1.0	3-0" x 6'8"	6	stair	new 1hr rated door slab and frame
	50	551-3.0 ST 1.1	3-0" x 6'8"	6	stair	new 1hr rated door slab and frame
	51	551-3.0 ST 1.2	2'-8" x 6'8"	6	stair	new 1hr rated door slab and frame [exist hall 39" width]
	52	551-3.0 APT 1	2'-8" x 6'8"	8	apartment/entry	new 1hr rated door slab and frame
	53	551-3.0 APT 2	2'-8" x 6'8"	8	apartment/entry	new 1hr rated door slab and frame
	54	552/3-3.0 ST 1.0	3-0" x 6'8"	9	stair	new 1hr rated door slab and frame
55	552/3-3.0 ST 1.1	3-0" x 6'8"	9	stair	new 1hr rated door slab and frame	
56	552/3-3.0 APT 1	2'-8" x 6'8"	8	apartment/entry	new 1hr rated door slab and frame	
57	552/3-3.0 APT 2	2'-8" x 6'8"	8	apartment/entry	new 1hr rated door slab and frame [re locate door]	
58	552/3-3.0 APT 3	2'-8" x 6'8"	8	apartment/entry	new 1hr rated door slab and frame	
59	552/3-3.0 APT 4	2'-8" x 6'8"	8	apartment/entry	new 1hr rated door slab and frame [re locate door]	
60	552/3-3.0 APT 5	2'-8" x 6'8"	8	apartment/entry	new 1hr rated door slab and frame [re locate door]	



- DOOR A
- thickness 1 3/4"
- material solid core birch veneer
- finish clear
- rating 1 hour
- threshold as per floor finish

James Sterling AIA  
Architect  
Studio Mnemosyne  
142 High Street  
Portland, Maine