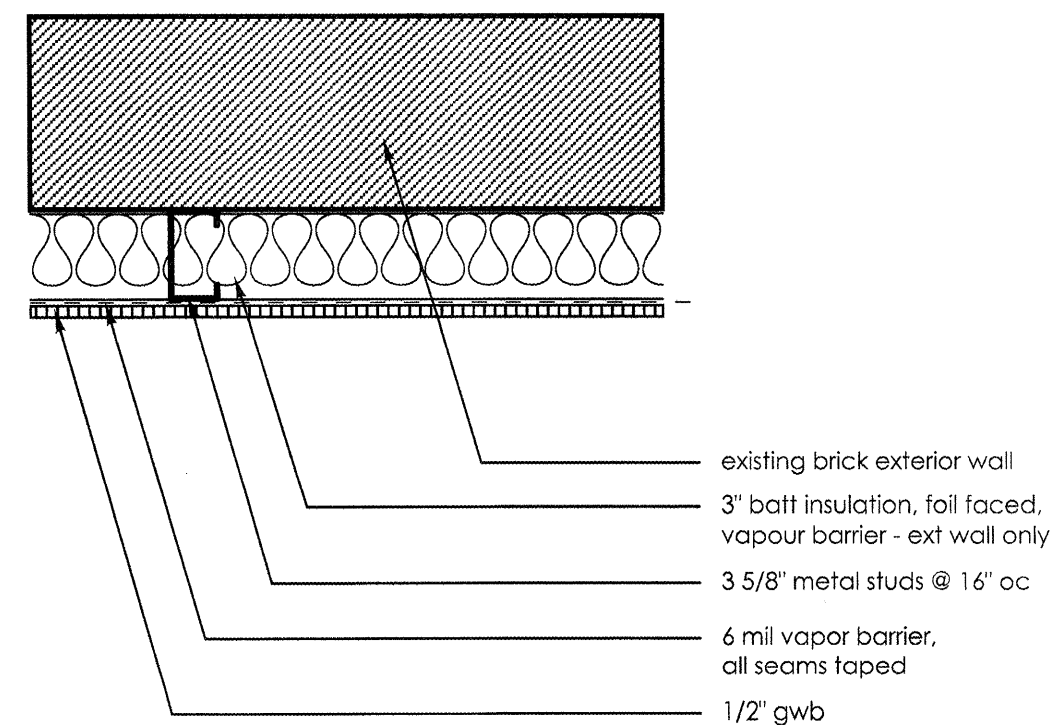
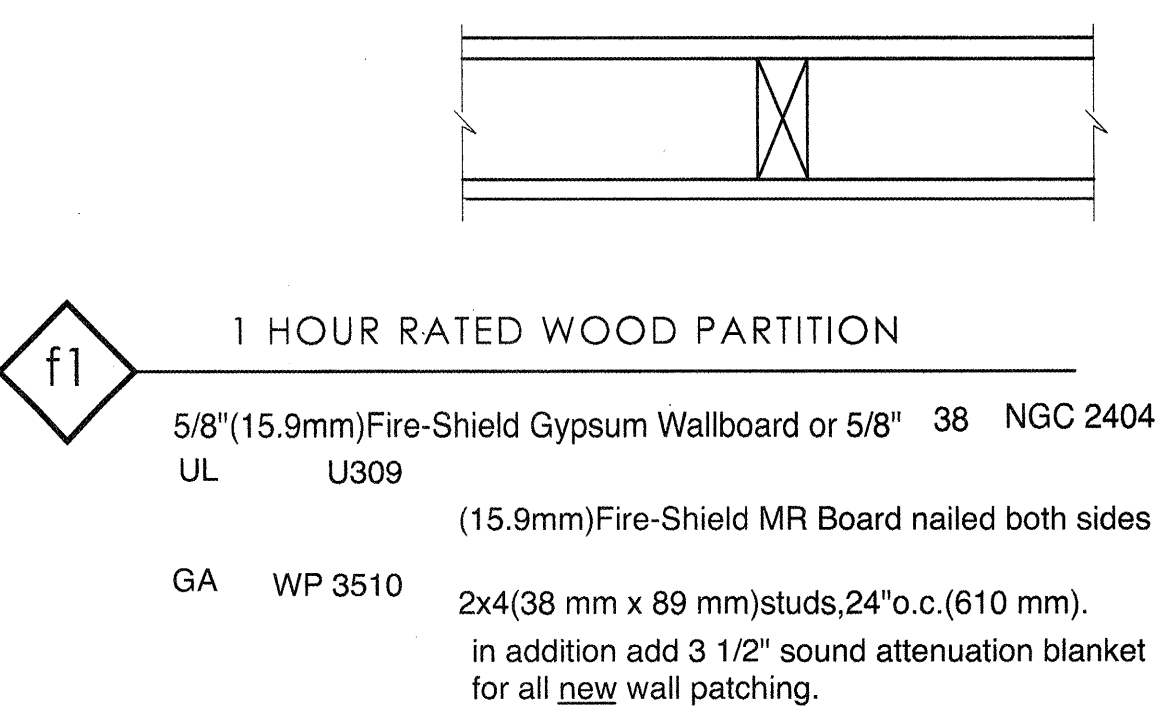


f1 INTERIOR PARTITION
NOT RATED



f2 MASONRY WALL

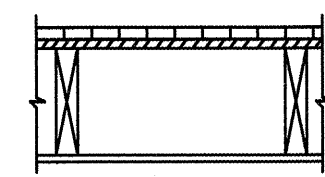


f1 1 HOUR RATED WOOD PARTITION
5/8" (15.9mm) Fire-Shield Gypsum Wallboard or 5/8" 38 NGC 2404
UL U309
GA WP 3510
(15.9mm) Fire-Shield MR Board nailed both sides
in addition add 3 1/2" sound attenuation blanket for all new wall patching.



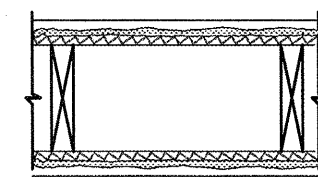
f4 existing plaster wall system typical
SEE UL 315

plaster brown coat
plaster scratch coat
metal lathe



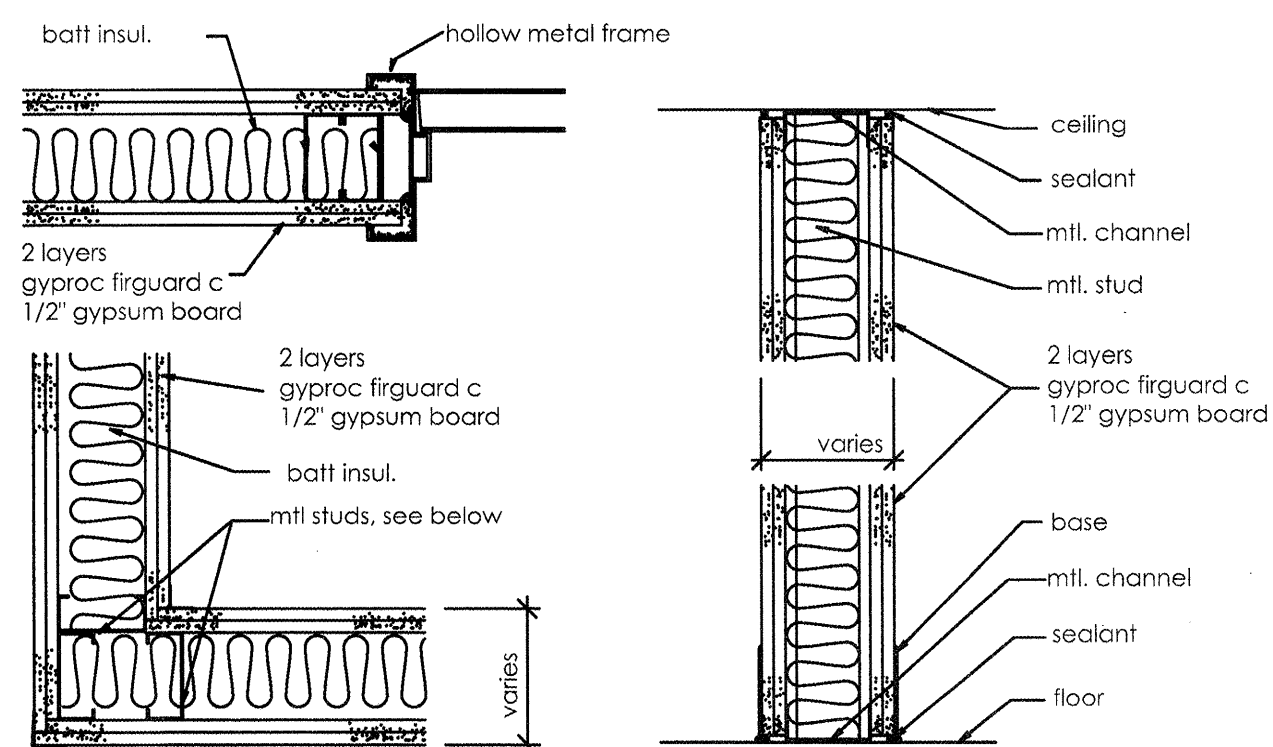
f2 1 HOUR RATED CEILING ASSEMBLY

UL L522
GA FC 5410
1/2" (12.7mm) Fire-Shield C Gypsum Wallboard nail attached to 2 x 10 (38mm x 241mm) wood joists spaced 16" o.c. (406mm). UL design L522 permits option of floor topping over plywood. in addition add 6" sound attenuation blanket for all new floor patching.



f4 1 HOUR RATED WALL ASSEMBLY
UL 315
DESIGN U315 similar

existing plaster wall system
Metal Lathe-- 3/8", diamond mesh expanded steel
Plaster Scratch Coat and Brown Coat
2x4 ≈ 16" o.c. wood studs: verify fire stopped
in addition add 3 1/2" sound attenuation blanket for all new floor patching.

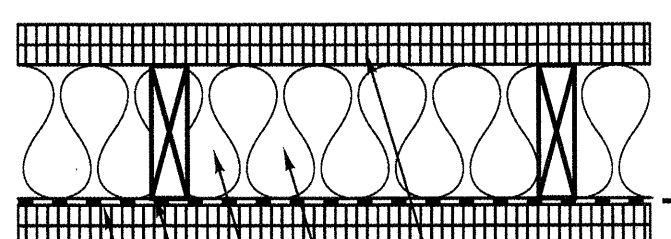


f5 WALL ASSEMBLY AT EXTERIOR WALL

exterior
interior face
match existing exterior finish
1/2" denshield or equal
2x6 ≈ 16" o.c. wood studs: verify fire stopped
6" batt insulation for all new patching.
Metal Lathe-- 3/8", diamond mesh expanded steel

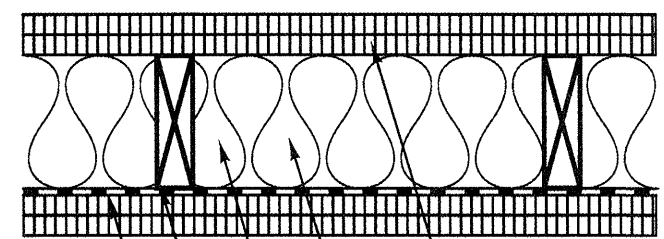
f2.1 2 HOUR RATED METAL PARTITION
(6", 3 5/8", 2 1/2" mtl. studs, see drawings)

FIRE TEST : DESIGN U412
STC : 53
SOUND TEST : NGC 2385



f3 2 HOUR RATED AT EXISTING PLASTER LATHE WALL

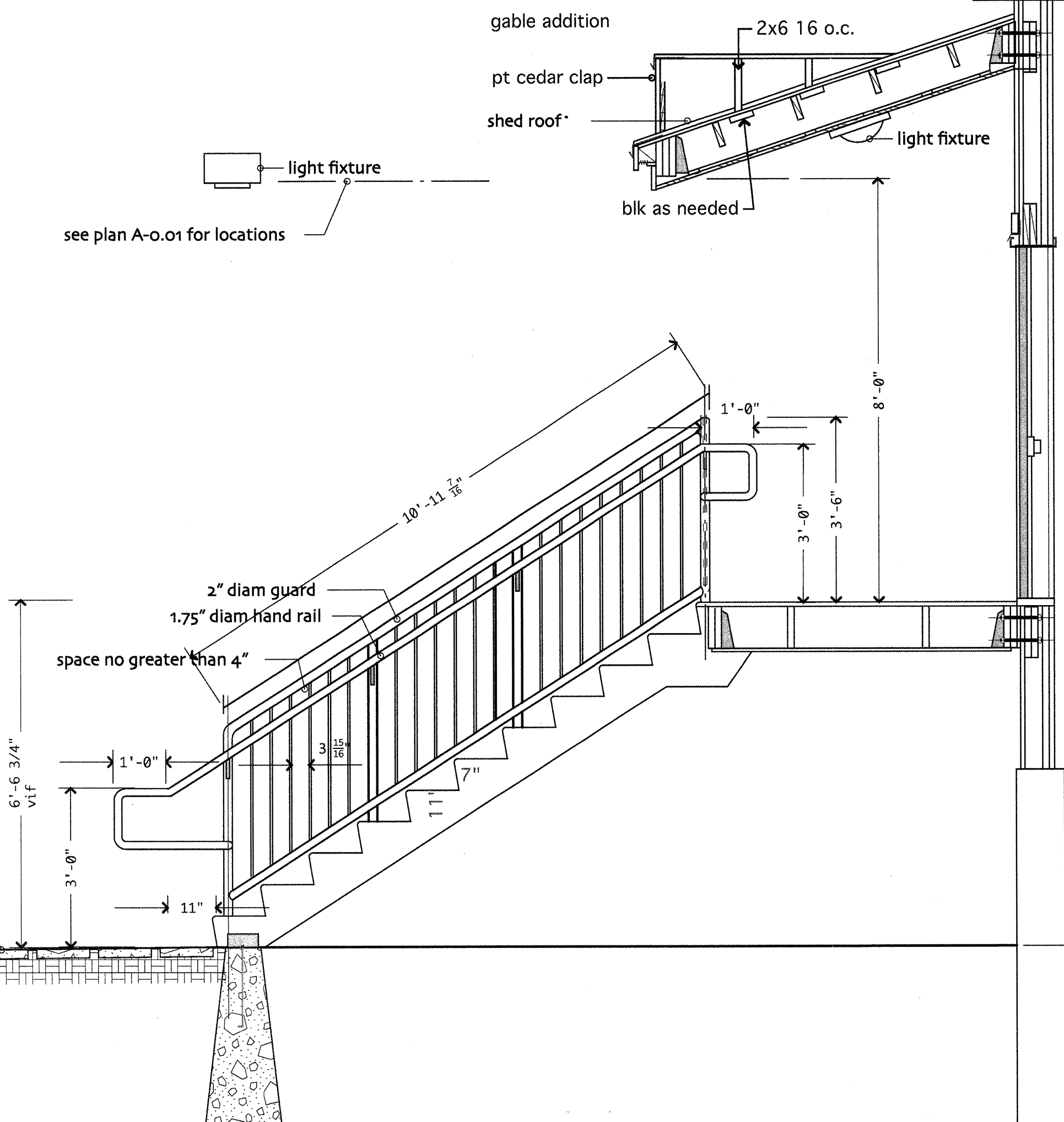
2 layers 1/2" exterior gyp sheathing
6" insulation
2 x 6 fire proofed wood stud wall @ 16" oc
6 mil vapor barrier, all seams taped, as required
2 layers 5/8" fire gwb



f2.2 2 HOUR RATED LOAD BEARING WALL

FIRE TEST : DESIGN U349 similar

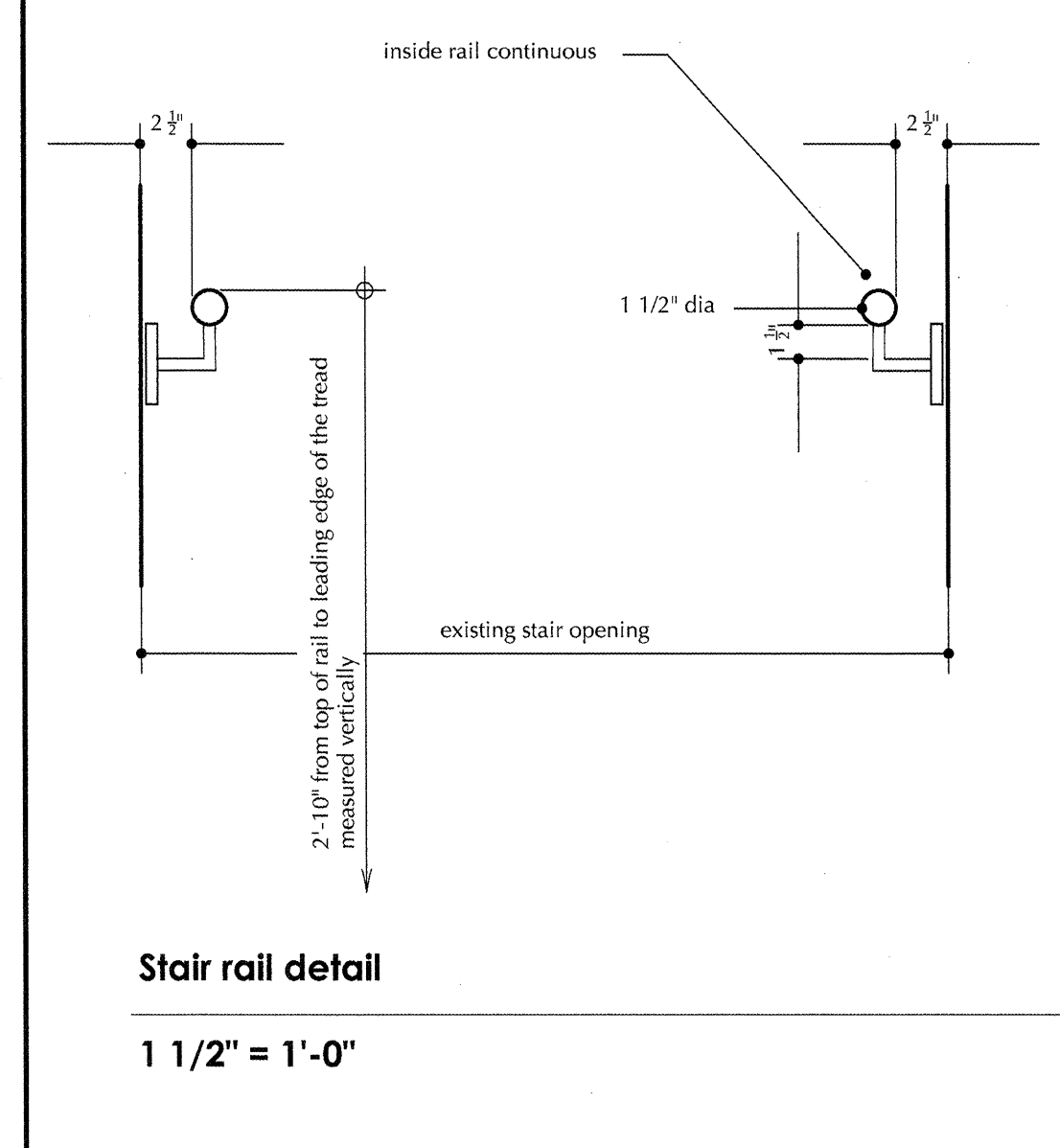
2x 12 x 12 precast pavers in gravel path to clear egress path
2 layers 1/2" exterior gyp sheathing
6" insulation
2 x 6 fire proofed wood stud wall @ 16" oc
6 mil vapor barrier, all seams taped, as required
2 layers 5/8" fire gwb



f6 EXTERIOR EGRESS STAIR SECTION

f6 b EXTERIOR EGRESS STAIR ROOF ELEVATION

DOOR SCHEDULE 551-553 CUMBERLAND AVENUE									
sheet	#	door	size	hardware	location	comment	DOOR SCHEDULE		
A-0.01	1	552/3-0.01 DR 1.0	3-0" x 6'8"	10	electrical rm	new 1hr rated door slab and frame			
	2	552/3-0.01 DR 1.1	3-0" x 6'8"	10	storage	new 1hr rated door slab and frame			
	3	552/3-0.01 DR 1.2	3-0" x 6'8"	10	oil tanks rm	new 1hr rated door slab and frame			
	4	552/3-0.01 DR 1.3	3-0" x 6'8"	10	basement	new 1hr rated door slab and frame			
	5	552/3-0.01 DR 1.4	3-0" x 6'8"	9	ext egress	new 1hr rated door slab and frame			
	6	552/3-0.01 DR 1.5	3-0" x 6'8"	10	boiler rm	new 1hr rated door slab and frame			
	7	552/3-0.01 DR 1.6	3-0" x 6'8"	9	ext egress	new 1hr rated door slab and frame			
A-0.1	8	551-0.1 ST 1.0	3-0" x 6'8"	6	stair	new 1hr rated door slab and frame			
	9	551-0.1 ST 1.1	3-0" x 6'8"	6	stair	new 1hr rated door slab and frame			
	10	551-0.1 ST 1.2	3-0" x 6'8"	11	door to grade	push bar new 1hr rated door slab and frame			
	11	551-0.1 APT 1	2'-8" x 6'8"	8	apartment/entry	match opening; new 1hr rated door slab and frame			
	12	551-0.1 APT 2	2'-8" x 6'8"	8	apartment/entry	match opening; new 1hr rated door slab and frame			
	13	552/3-0.1 ST 1.0	3-0" x 6'8"	11	grade entry	push bar new 1hr rated door slab and frame			
	14	552/3-0.1 ST 1.1	3-0" x 6'8"	6	stair	new 1hr rated door slab and frame mag hold			
	15	552/3-0.1 ST 1.2	3-0" x 6'8"	9	stair/exterior	push bar new 1hr rated door slab and frame			
	16	552/3-0.1 ST 1.3	3-0" x 6'8"	6	stair	new 1hr rated door slab and frame mag hold			
	17	552/3-0.1 ST 1.3	2'-8" x 6'8"	6	stair	new 1hr rated door slab and frame [locate door]			
	18	552/3-0.1 APT 1.0	2'-8" x 6'8"	8	apartment/entry	match opening; new 1hr rated door slab and frame			
	19	552/3-0.1 APT 1.1	2'-8" x 6'8"	8	apartment/entry	match opening; new 1hr rated door slab and frame			
20	552/3-0.1 APT 2	2'-8" x 6'8"	8	apartment/entry	match opening; new 1hr rated door slab and frame				
21	552/3-0.1 APT 3	3-0" x 6'8"	8	apartment/entry	new 1hr rated door slab and frame [re locate door]				
22	552/3-0.1 APT 4	2'-8" x 6'8"	8	apartment/entry	match opening; new 1hr rated door slab and frame				
23	552/3-0.1 APT 5	2'-8" x 6'8"	8	apartment/entry	match opening; new 1hr rated door slab and frame				
A-1.0	24	551-1.0 ST 1.0	3-0" x 6'8"	11	door to grade	push bar new 1hr rated door slab and frame			
	25	551-1.0 ST 1.1	3-0" x 6'8"	6	stair	new 1hr rated door slab and frame mag hold			
	26	551-1.0 ST 1.2	3-0" x 6'8"	6	stair	new 1hr rated door slab and frame			
	27	551-1.0 ST 1.3	2'-8" x 6'8"	6	stair	new 1hr rated door slab and frame [exist hall 39" width]			
	28	551-1.0 APT 1	2'-8" x 6'8"	8	apartment/entry	match opening; new 1hr rated door slab and frame			
	29	551-1.0 APT 1.1	2'-8" x 6'8"	8	apartment/entry	match opening; new 1hr rated door slab and frame			
	30	552/3-1.0 ST 1.0	3-0" x 6'8"	6	stair	new 1hr rated door slab and frame w/ mag hold			
	31	552/3-1.1 ST 1.0	3-0" x 6'8"	6	stair	new 1hr rated door slab and frame w/ mag hold			
	32	552/3-0.1 APT 1	2'-8" x 6'8"	8	apartment/entry	match opening; new 1hr rated door slab and frame			
	33	552/3-0.1 APT 2	2'-8" x 6'8"	8	apartment/entry	new 1hr rated door slab and frame [re locate door]			
34	552/3-0.1 APT 3	2'-8" x 6'8"	8	apartment/entry	new 1hr rated door slab and frame				
35	552/3-0.1 APT 4	2'-8" x 6'8"	8	apartment/entry	new 1hr rated door slab and frame [re locate door]				
36	552/3-0.1 APT 5	2'-8" x 6'8"	8	apartment/entry	new 1hr rated door slab and frame [re locate door]				
A-2.0	37	551-2.0 ST 1.0	3-0" x 6'8"	6	stair	new 1hr rated door slab and frame w/ mag hold			
	38	551-2.0 ST 1.1	3-0" x 6'8"	6	stair	new 1hr rated door slab and frame w/ mag hold			
	39	551-2.0 ST 1.2	2'-8" x 6'8"	6	stair	new 1hr rated door slab and frame [exist hall 39" width]			
	40	551-2.0 APT 1	2'-8" x 6'8"	8	apartment/entry	new 1hr rated door slab and frame			
	41	551-2.0 APT 2	2'-8" x 6'8"	8	apartment/entry	new 1hr rated door slab and frame			
A-3.0	42	552/3-2.0 ST 1.0	3-0" x 6'8"	6	stair	new 1hr rated door slab and frame			
	43	552/3-2.0 ST 1.1	3-0" x 6'8"	6	stair	new 1hr rated door slab and frame			
	44	552/3-2.0 APT 1	2'-8" x 6'8"	8	apartment/entry	new 1hr rated door slab and frame			
	45	552/3-2.0 APT 2	2'-8" x 6'8"	8	apartment/entry	new 1hr rated door slab and frame [re locate door]			
	46	552/3-2.0 APT 3	2'-8" x 6'8"	8	apartment/entry	new 1hr rated door slab and frame			
	47	552/3-2.0 APT 4	2'-8" x 6'8"	8	apartment/entry	new 1hr rated door slab and frame [re locate door]			
	48	552/3-2.0 APT 5	2'-8" x 6'8"	8	apartment/entry	new 1hr rated door slab and frame [re locate door]			
	49	551-3.0 ST 1.0	3-0" x 6'8"	6	stair	new 1hr rated door slab and frame			
50	551-3.0 ST 1.1	3-0" x 6'8"	6	stair	new 1hr rated door slab and frame				
51	551-3.0 ST 1.2	2'-8" x 6'8"	6	stair	new 1hr rated door slab and frame [exist hall 39" width]				
52	551-3.0 APT 1	2'-8" x 6'8"	8	apartment/entry	new 1hr rated door slab and frame				
53	551-3.0 APT 2	2'-8" x 6'8"	8	apartment/entry	new 1hr rated door slab and frame				
54	552/3-3.0 ST 1.0	3-0" x 6'8"	9	stair	new 1hr rated door slab and frame w/ mag hold				
55	552/3-3.0 ST 1.1	3-0" x 6'8"	9	stair	new 1hr rated door slab and frame w/ mag hold				
56	552/3-3.0 APT 1	2'-8" x 6'8"	8	apartment/entry	new 1hr rated door slab and frame				
57	552/3-3.0 APT 2	2'-8" x 6'8"	8	apartment/entry	new 1hr rated door slab and frame [re locate door]				
58	552/3-3.0 APT 3	2'-8" x 6'8"	8	apartment/entry	new 1hr rated door slab and frame				
59	552/3-3.0 APT 4	2'-8" x 6'8"	8	apartment/entry	new 1hr rated door slab and frame [re locate door]				
60	552/3-3.0 APT 5	2'-8" x 6'8"	8	apartment/entry	new 1hr rated door slab and frame [re locate door]				



DOOR A
thickness material 1 3/4"
finish solid core birch veneer
rating clear
threshold 1 hour
as per floor finish

James Sterling AIA
Architect
Studio Mnemosyne
142 High Street
Portland, Maine
551-553 CONGRESS STREET
RENOVATIONS 7/22/09
9/28/09

