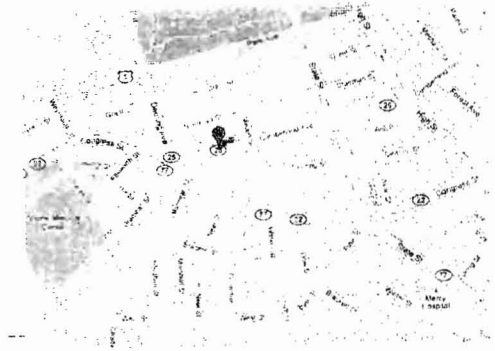


GENERAL NOTES AT 549-553 CUMBERLAND AVENUE
 Note properties addressed 551-553 Cumberland Avenue

- RENOVATIONS TO INCLUDE:
1. INTERIOR FINISH UPGRADE AS PER CODE.
 2. AUTOMATIC SPRINKLER SYSTEM AS PER CODE. (BY NEW TEK OR FREEDOM FIRE)
 3. SEPARATION OF CORRIDORS FROM VERTICAL OPENINGS.
 4. NEW DETECTION AND ALARM SYSTEM (BY CUNNINGHAM ALARM)
 5. UPGRADE FIRE ALARM AND EGRESS SIGNAGE SYSTEM PLAN (BY THOMAS ENGINEERING 11/27/01)
 6. CERTIFY ELECTRICAL SYSTEM (UPDATE PANEL BY THOMAS ENGINEERING)
 7. APT DOORS TO BE RATED AS PER CODE AND PROVIDED WITH CLOSURES see sch I Schedules and hardware sets
 8. ALL BEDROOM AND LIVING ROOMS TO MEET NFPA101 REQUIREMENTS FOR EGRESS SF VII

PAGE INDEX

A-0.01	COVER AND SUB GRADE
A-0.1	BASEMENT AND GRADE
A-1.0	ENTRY AT GRADE AND FIRST FLOOR
A-2.0	SECOND FLOOR
A-3.0	THIRD FLOOR
A-4.0	SCHEDULES AND DETAILS
E-0.0	BASEMENT
E-1.0	FIRST FLOOR
E-2.0	SECOND FLOOR
E-3.0	THIRD FLOOR



FOR AVOIDANCE
 549-553 Cumberland Avenue
 Chart# 48 Block# E Lot# 27
 Lot Square Footage 7470 sf

Cumberland Avenue

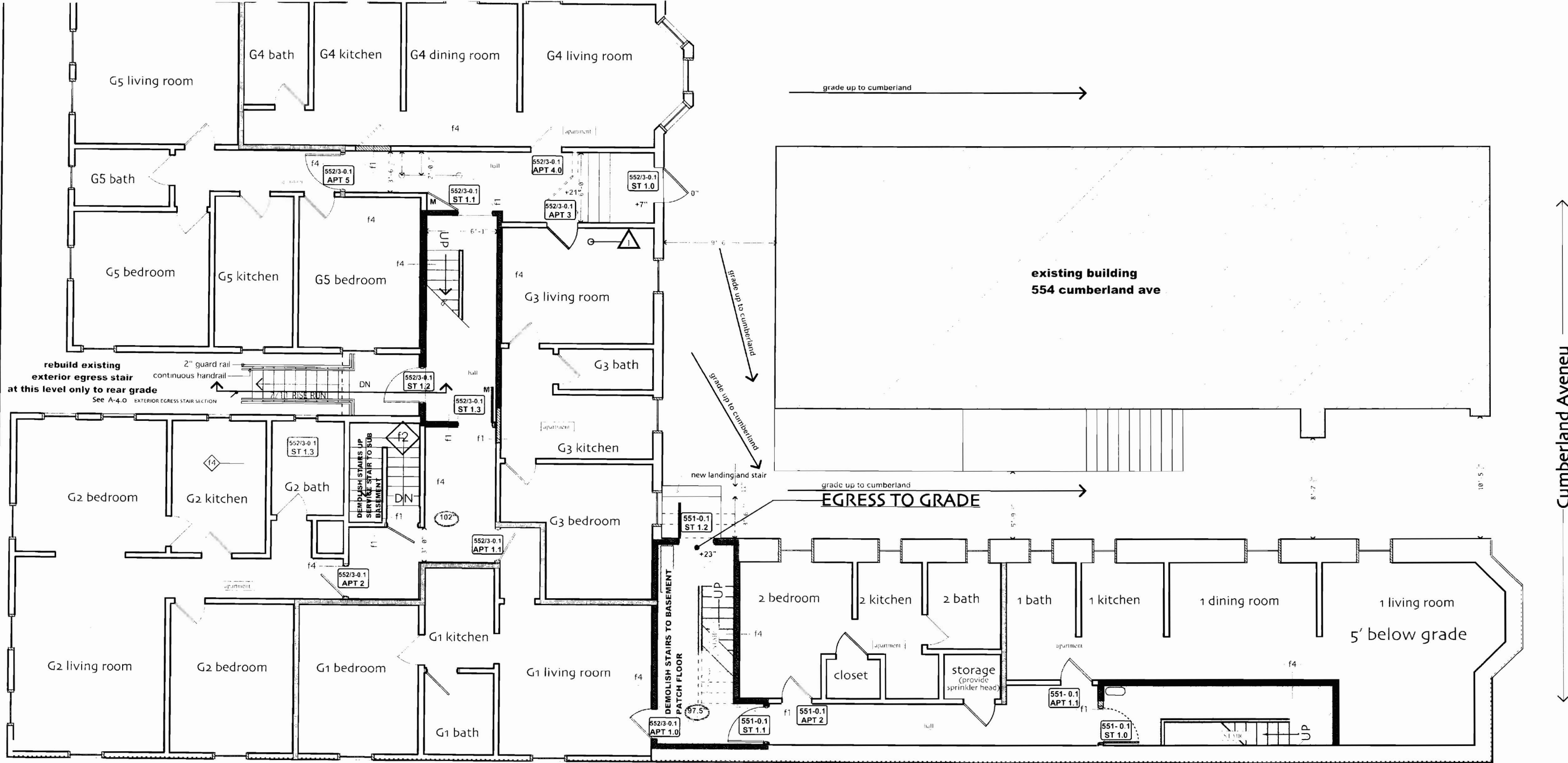
scale 1/4" = 1'-0"

551-553 CUMBERLAND AVENUE
 SUB BASEMENT 551-3 FLOOR PLAN

Revision
RECEIVED
 OCT 1 2009
 Dept. of Building Inspections
 City of Portland Maine

James Sterling AIA
 Architect
 Studio Mnemosyne
 142 High Street
 Portland, Maine

A-0.01 7/22/09
 REVISED 9/28/09



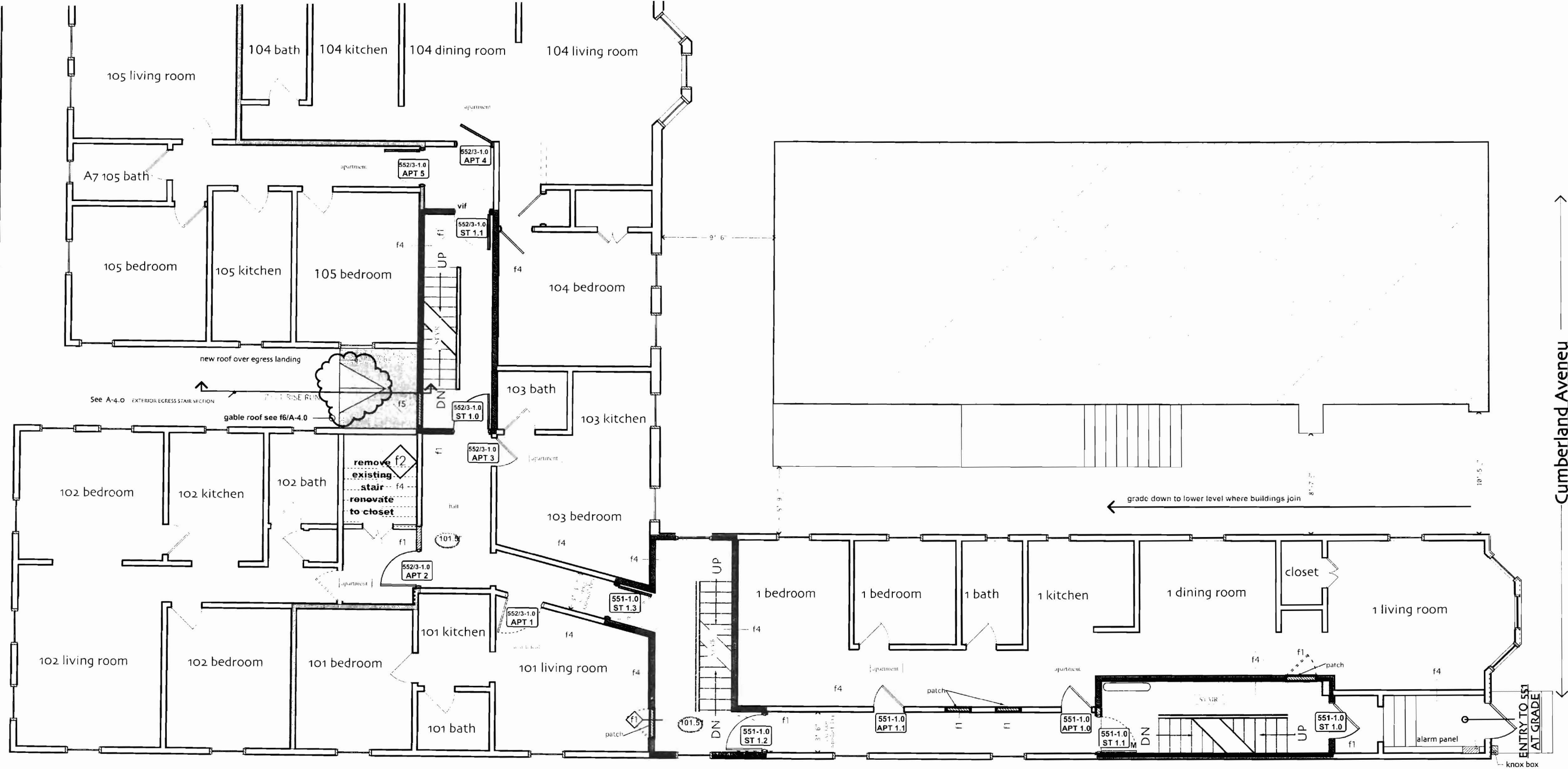
Cumberland Avenue

James Sterling AIA
 Architect
 Studio Mnemosyne
 142 High Street
 Portland, Maine

scale 1/4" = 1'-0"

551-553 CUMBERLAND AVENUE EGRESS SCHEME
 BASEMENT (551) AND GRADE (552-3)

A-0.1 7/22/09
 REVISED 9/28/09

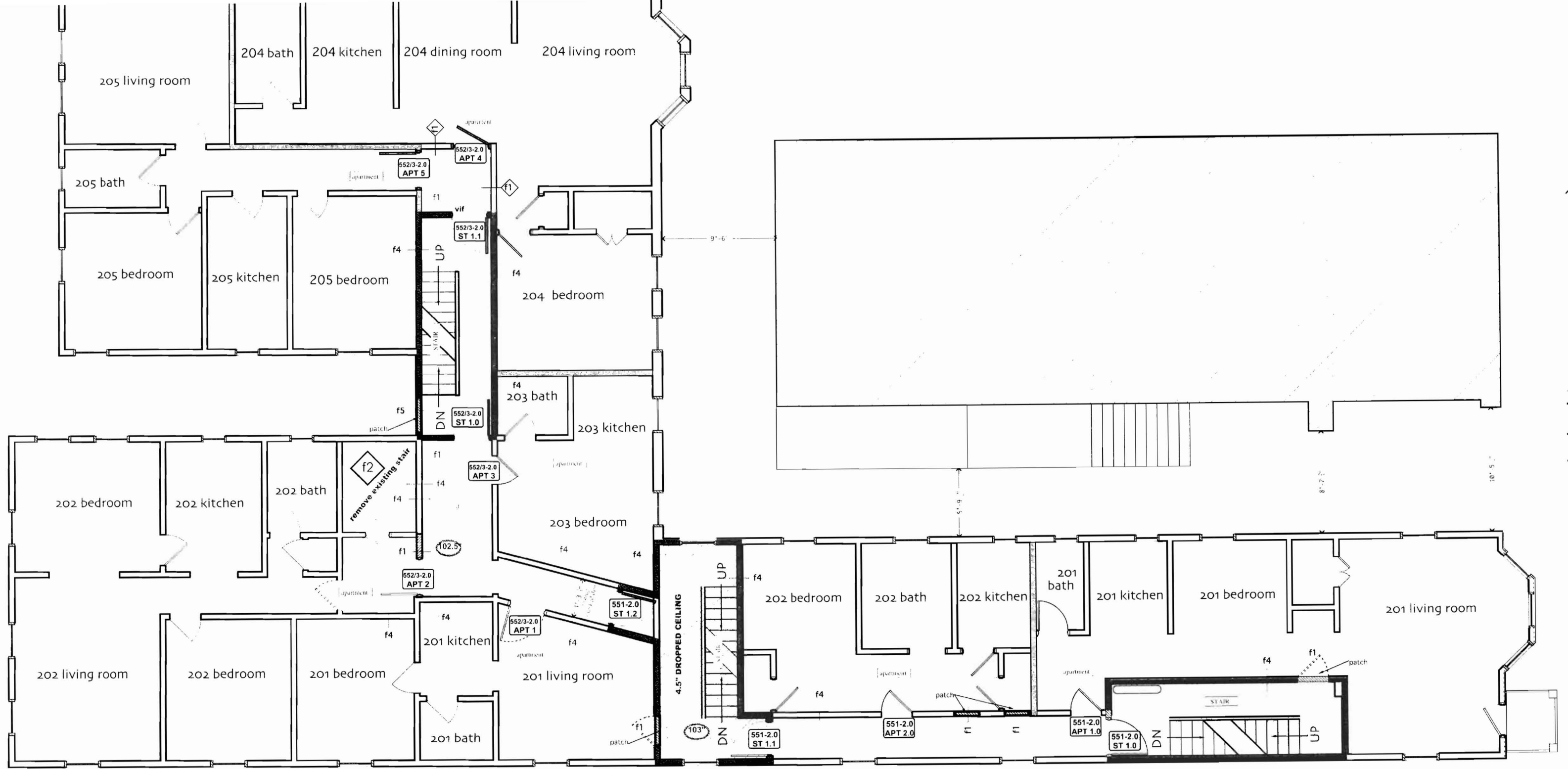


Cumberland Avenue

James Sterling AIA
 Architect
 Studio Mnemosyne
 142 High Street
 Portland, Maine

scale 1/4" = 1'-0"
551-553 CUMBERLAND AVENUE EGRESS SCHEME
552-3 FIRST FLOOR 551 ENTRY GRADE PLAN

7/1/09 after Wallace review
 5/30/09 original submission
A-1.0 7/22/09
REVISED 9/28/09

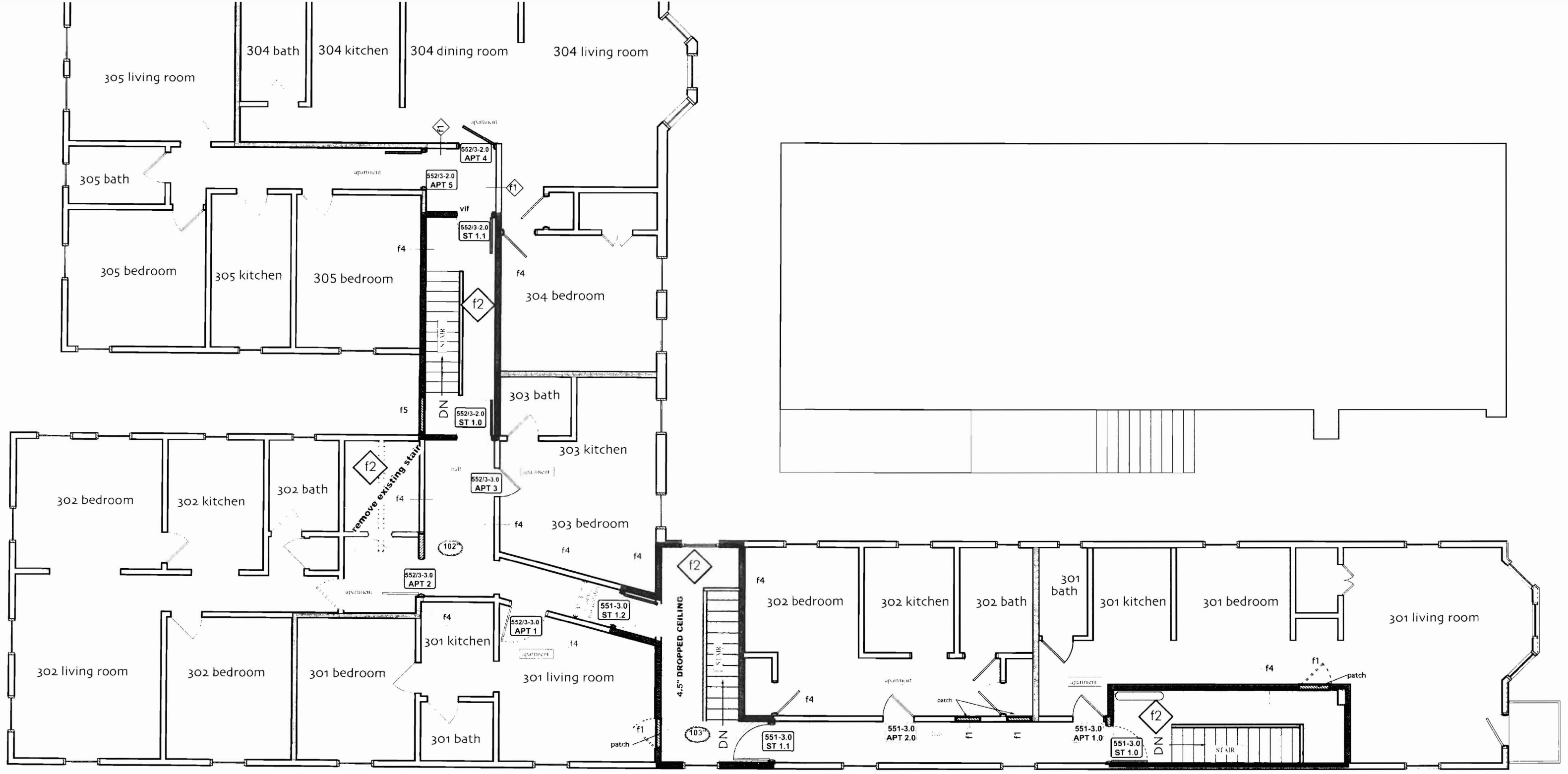


Cumberland Avenue

James Sterling AIA
 Architect
 Studio Mnemosyne
 142 High Street
 Portland, Maine

scale 1/4" = 1'-0"
551-553 CUMBERLAND AVENUE EGRESS SCHEME
2nd FLOOR PLAN

A-2.0 7/22/09
 REVISED 9/28/09

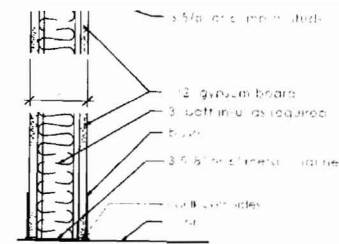


Cumberland Avenue

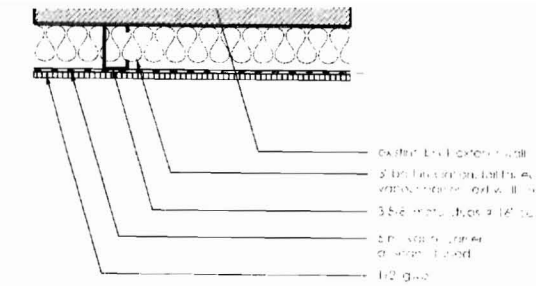
James Sterling AIA
 Architect
 Studio Mnemosyne
 142 High Street
 Portland, Maine

scale 1/4" = 1'-0"
 551-553 CUMBERLAND AVENUE EGRESS SCHEME
 3rd FLOOR PLAN

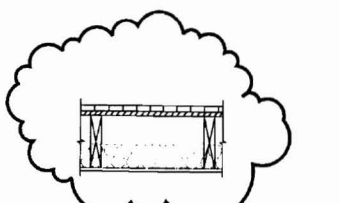
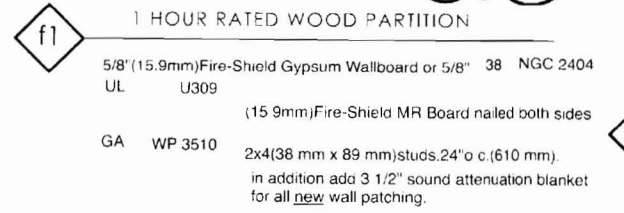
A-3.0 7/22/09
 REVISED 9/28/09



f1 INTERIOR PARTITION
NOT RATED



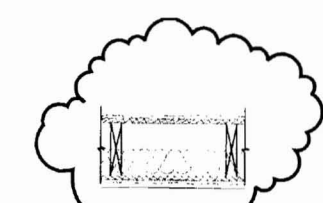
2 MASONRY WALL



f2 1 HOUR RATED CEILING ASSEMBLY

UL L522 1/2" (12.7mm) Fire-Shield C Gypsum Wallboard nail attached to 2 x 10 (38mm x 241mm) wood joists spaced 16" o.c. (406mm). UL design L522 permits option of floor topping over plywood. in addition add 6" sound attenuation blanket for all new floor patching.

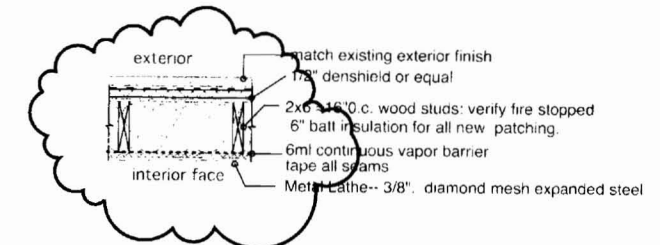
GA FC 5410



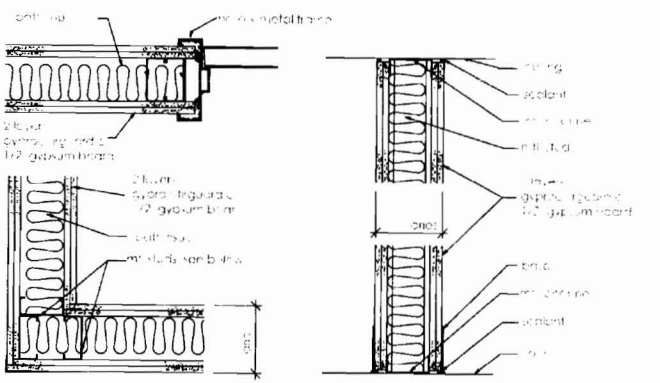
f4 1 HOUR RATED WALL ASSEMBLY

existing plaster wall system

UL 315 Metal Lath-- 3/8" diamond mesh expanded steel Plaster Scratch Coat and Brown Coat 2x4 ≈ 16" o.c. wood studs; verify fire stopped in addition add 3 1/2" sound attenuation blanket for all new floor patching.

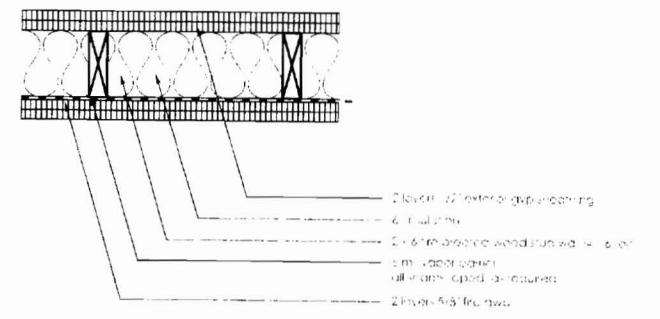


f5 WALL ASSEMBLY AT EXTERIOR WALL

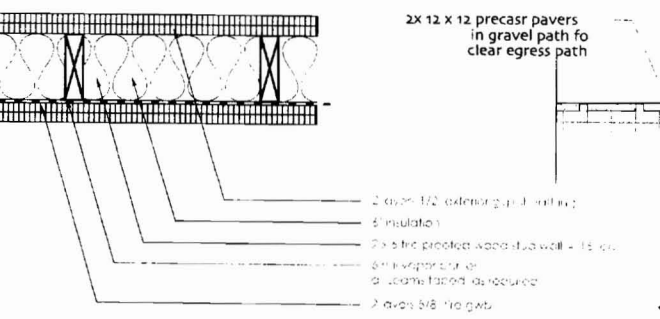


f2.1 2 HOUR RATED METAL PARTITION

16" 3 5/8" 2 1/2" min studs, see drawings



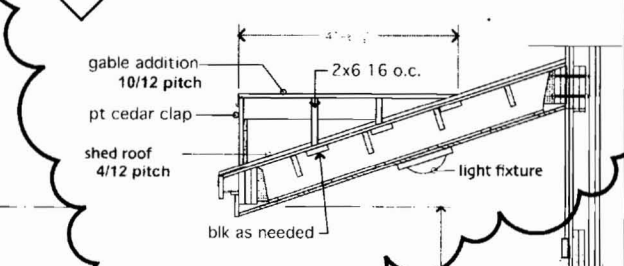
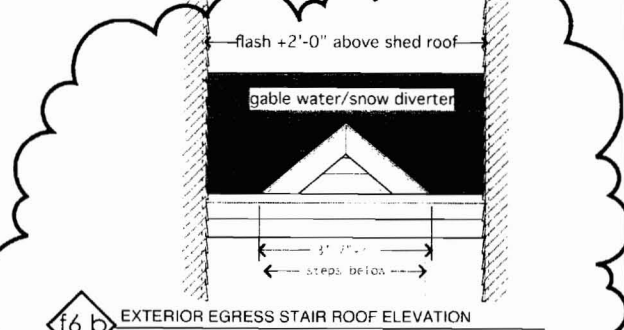
f3 2 HOUR RATED AT EXISTING PLASTER LATHE WALL



f2.2 2 HOUR RATED LOAD BEARING WALL

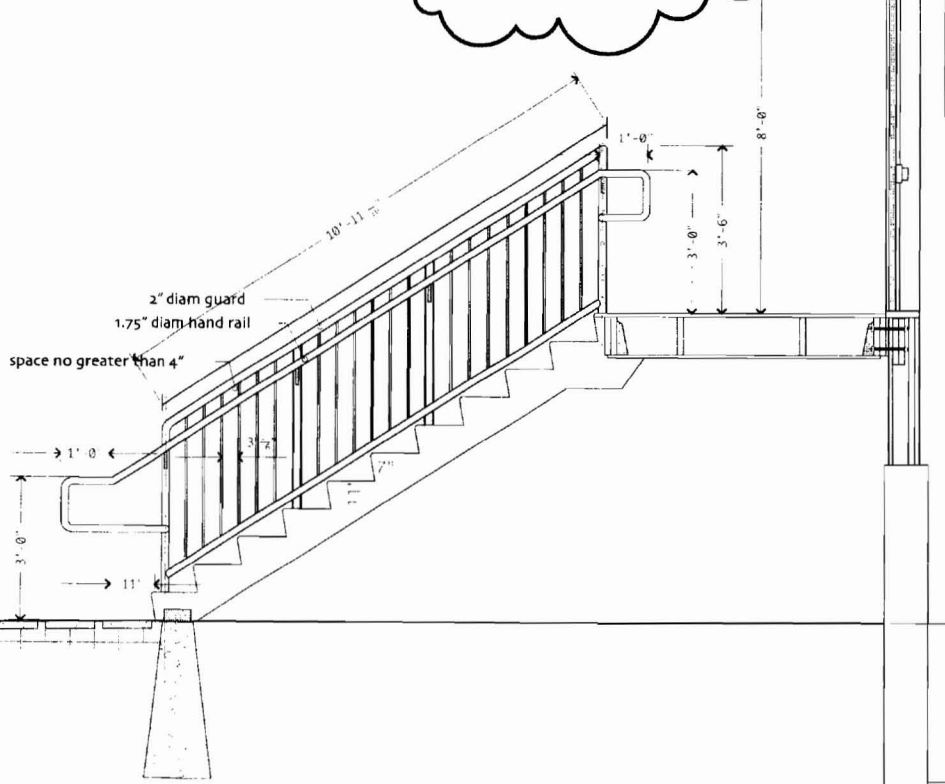


f4 existing plaster wall system typical
SEE UL 315



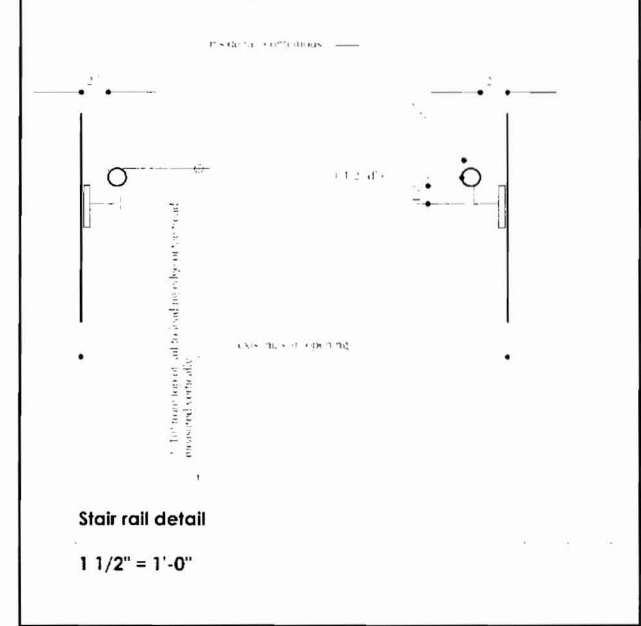
light fixture

see plan A-0.01 for locations



f6 EXTERIOR EGRESS STAIR SECTION

3	552/3-0.01 DR 1.4	3'-0" x 6'-8"	9	ext egress	new, fire rated door slab and frame
4	552/3-0.01 DR 1.5	3'-0" x 6'-8"	10	gabler rm	new, fire rated door slab and frame
5	552/3-0.01 DR 1.6	3'-0" x 6'-8"	9	ext egress	new, fire rated door slab and frame
6	551-0.1 ST 1.0	3'-0" x 6'-8"	6	stair	new, fire rated door slab and frame
7	551-0.1 ST 1.1	3'-0" x 6'-8"	6	stair	new, fire rated door slab and frame
8	551-0.1 ST 1.2	3'-0" x 6'-8"	11	door to grade	new, fire rated door slab and frame
9	551-0.1 APT 1	2'-8" x 6'-8"	8	apartment/entry	new, fire rated door slab and frame
10	551-0.1 APT 2	2'-8" x 6'-8"	8	apartment/entry	new, fire rated door slab and frame
11	552/3-0.1 ST 1.0	3'-0" x 6'-8"	11	grade entry	new, fire rated door slab and frame
12	552/3-0.1 ST 1.1	3'-0" x 6'-8"	6	stair	new, fire rated door slab and frame
13	552/3-0.1 ST 1.2	3'-0" x 6'-8"	9	stair/exterior	new, fire rated door slab and frame
14	552/3-0.1 ST 1.3	3'-0" x 6'-8"	6	stair	new, fire rated door slab and frame
15	552/3-0.1 ST 1.3	2'-8" x 6'-8"	6	stair	new, fire rated door slab and frame
16	552/3-0.1 APT 1.0	2'-8" x 6'-8"	8	apartment/entry	new, fire rated door slab and frame
17	552/3-0.1 APT 1.1	2'-8" x 6'-8"	8	apartment/entry	new, fire rated door slab and frame
18	552/3-0.1 APT 1.2	2'-8" x 6'-8"	8	apartment/entry	new, fire rated door slab and frame
19	552/3-0.1 APT 2	2'-8" x 6'-8"	8	apartment/entry	new, fire rated door slab and frame
20	552/3-0.1 APT 3	2'-8" x 6'-8"	8	apartment/entry	new, fire rated door slab and frame
21	552/3-0.1 APT 4	2'-8" x 6'-8"	8	apartment/entry	new, fire rated door slab and frame
22	552/3-0.1 APT 5	2'-8" x 6'-8"	8	apartment/entry	new, fire rated door slab and frame
23	551-1.0 ST 1.0	3'-0" x 6'-8"	6	stair	new, fire rated door slab and frame
24	551-1.0 ST 1.1	3'-0" x 6'-8"	6	stair	new, fire rated door slab and frame
25	551-1.0 ST 1.2	3'-0" x 6'-8"	6	stair	new, fire rated door slab and frame
26	551-1.0 ST 1.3	2'-8" x 6'-8"	6	stair	new, fire rated door slab and frame
27	551-1.0 APT 1	2'-8" x 6'-8"	8	apartment/entry	new, fire rated door slab and frame
28	551-1.0 APT 1.1	2'-8" x 6'-8"	8	apartment/entry	new, fire rated door slab and frame
29	552/3-1.0 ST 1.0	3'-0" x 6'-8"	6	stair	new, fire rated door slab and frame
30	552/3-1.1 ST 1.0	3'-0" x 6'-8"	6	stair	new, fire rated door slab and frame
31	552/3-0.1 APT 1	2'-8" x 6'-8"	8	apartment/entry	new, fire rated door slab and frame
32	552/3-0.1 APT 2	2'-8" x 6'-8"	8	apartment/entry	new, fire rated door slab and frame
33	552/3-0.1 APT 3	2'-8" x 6'-8"	8	apartment/entry	new, fire rated door slab and frame
34	552/3-0.1 APT 4	2'-8" x 6'-8"	8	apartment/entry	new, fire rated door slab and frame
35	552/3-0.1 APT 5	2'-8" x 6'-8"	8	apartment/entry	new, fire rated door slab and frame
36	551-2.0 ST 1.0	3'-0" x 6'-8"	6	stair	new, fire rated door slab and frame
37	551-2.0 ST 1.1	3'-0" x 6'-8"	6	stair	new, fire rated door slab and frame
38	551-2.0 ST 1.2	2'-8" x 6'-8"	6	stair	new, fire rated door slab and frame
39	551-2.0 APT 1	2'-8" x 6'-8"	8	apartment/entry	new, fire rated door slab and frame
40	551-2.0 APT 2	2'-8" x 6'-8"	8	apartment/entry	new, fire rated door slab and frame
41	552/3-2.0 ST 1.0	3'-0" x 6'-8"	6	stair	new, fire rated door slab and frame
42	552/3-2.0 ST 1.1	3'-0" x 6'-8"	6	stair	new, fire rated door slab and frame
43	552/3-2.0 APT 1	2'-8" x 6'-8"	8	apartment/entry	new, fire rated door slab and frame
44	552/3-2.0 APT 2	2'-8" x 6'-8"	8	apartment/entry	new, fire rated door slab and frame
45	552/3-2.0 APT 3	2'-8" x 6'-8"	8	apartment/entry	new, fire rated door slab and frame
46	552/3-2.0 APT 4	2'-8" x 6'-8"	8	apartment/entry	new, fire rated door slab and frame
47	552/3-2.0 APT 5	2'-8" x 6'-8"	8	apartment/entry	new, fire rated door slab and frame
48	551-3.0 ST 1.0	3'-0" x 6'-8"	6	stair	new, fire rated door slab and frame
49	551-3.0 ST 1.1	3'-0" x 6'-8"	6	stair	new, fire rated door slab and frame
50	551-3.0 ST 1.2	2'-8" x 6'-8"	6	stair	new, fire rated door slab and frame
51	551-3.0 APT 1	2'-8" x 6'-8"	8	apartment/entry	new, fire rated door slab and frame
52	551-3.0 APT 2	2'-8" x 6'-8"	8	apartment/entry	new, fire rated door slab and frame
53	552/3-3.0 ST 1.0	3'-0" x 6'-8"	9	stair	new, fire rated door slab and frame
54	552/3-3.0 ST 1.1	3'-0" x 6'-8"	9	stair	new, fire rated door slab and frame
55	552/3-3.0 APT 1	2'-8" x 6'-8"	8	apartment/entry	new, fire rated door slab and frame
56	552/3-3.0 APT 2	2'-8" x 6'-8"	8	apartment/entry	new, fire rated door slab and frame
57	552/3-3.0 APT 3	2'-8" x 6'-8"	8	apartment/entry	new, fire rated door slab and frame
58	552/3-3.0 APT 4	2'-8" x 6'-8"	8	apartment/entry	new, fire rated door slab and frame
59	552/3-3.0 APT 5	2'-8" x 6'-8"	8	apartment/entry	new, fire rated door slab and frame



DOOR A

thickness	1 3/4"
material	solid core birch veneer
finish	clear
rating	1 hour
threshold	as per floor finish

James Sterling AIA
Architect
Studio Mnemosyne
142 High Street
Portland, Maine
551-553 CONGRESS STREET
RENOVATIONS 7/22/09

551-553 CUMBERLAND AVENUE
SCHEDULES

REVISED 9/28/09
A-4.0

scale varies