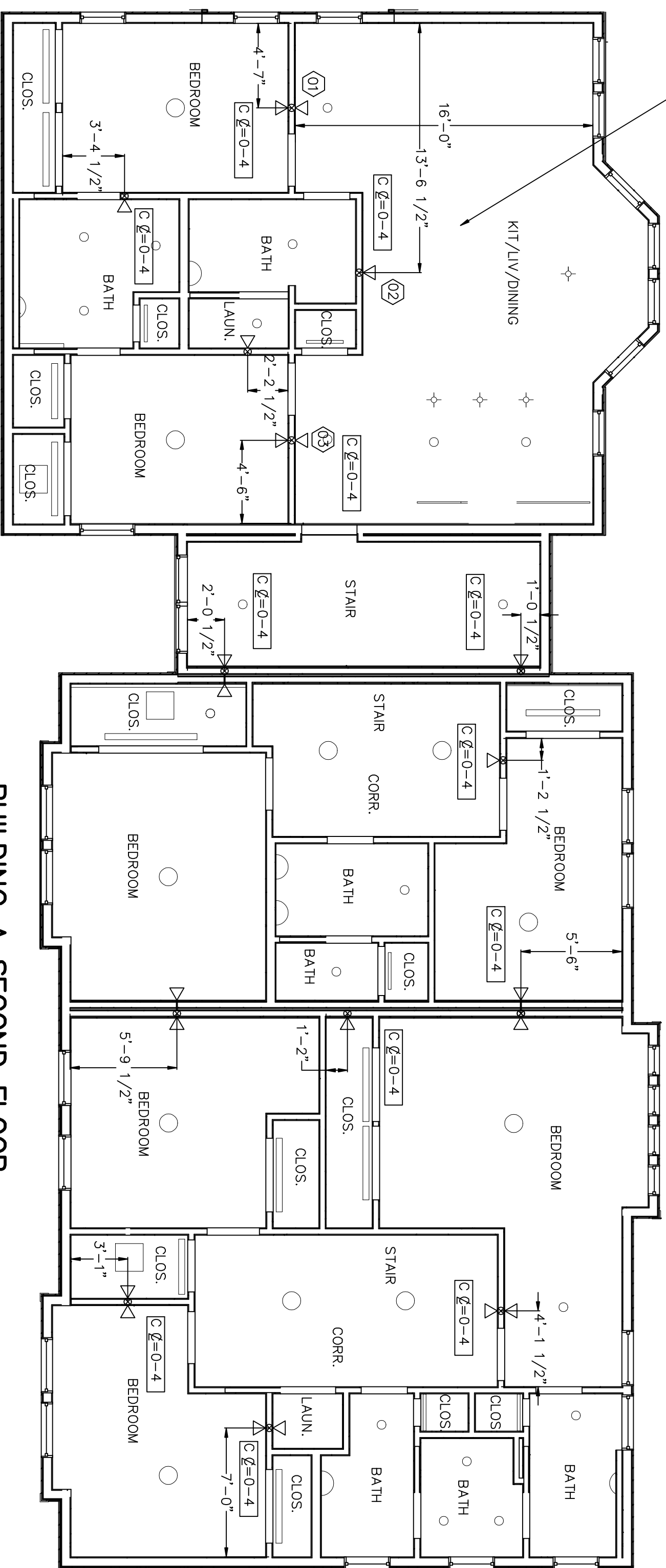
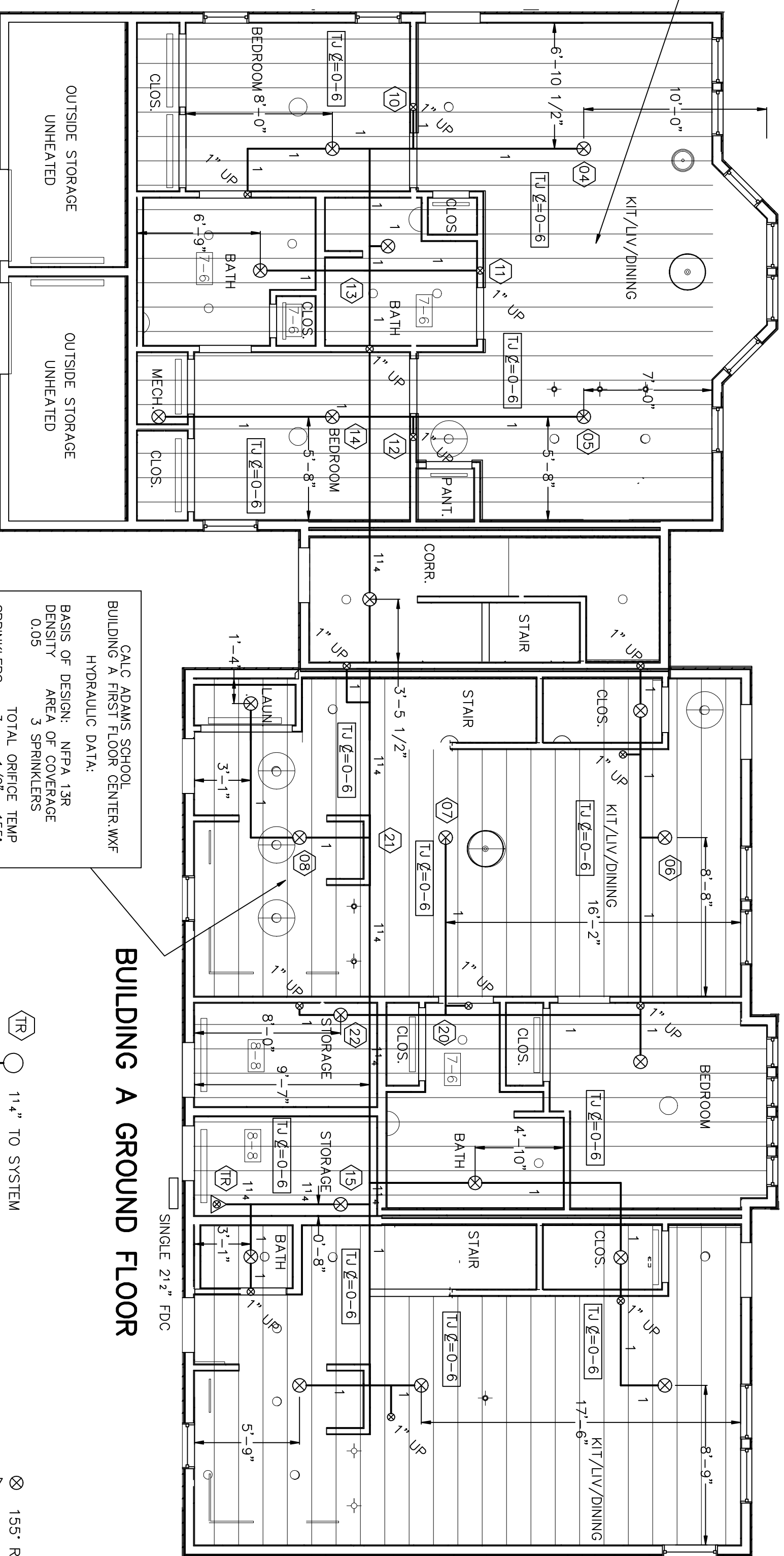


CALC ADAMS SCHOOL
BUILDING A SECOND FLOOR W/F
HYDRAULIC DATA:
BASIS OF DESIGN: NFPA 13R
DESIGN AREA: 5 CONDUIT
DENSITY: 0.05
TOTAL OFFICE TEMP
SPRINKLERS 3 1/2" 155°
SYSTEM DEMAND AT CITY:
PRESSURE: 40.52
FLOW HOSE
38.27
SAFETY MARGIN: 5.66 PSI
OCCUPANCY: HOUSING



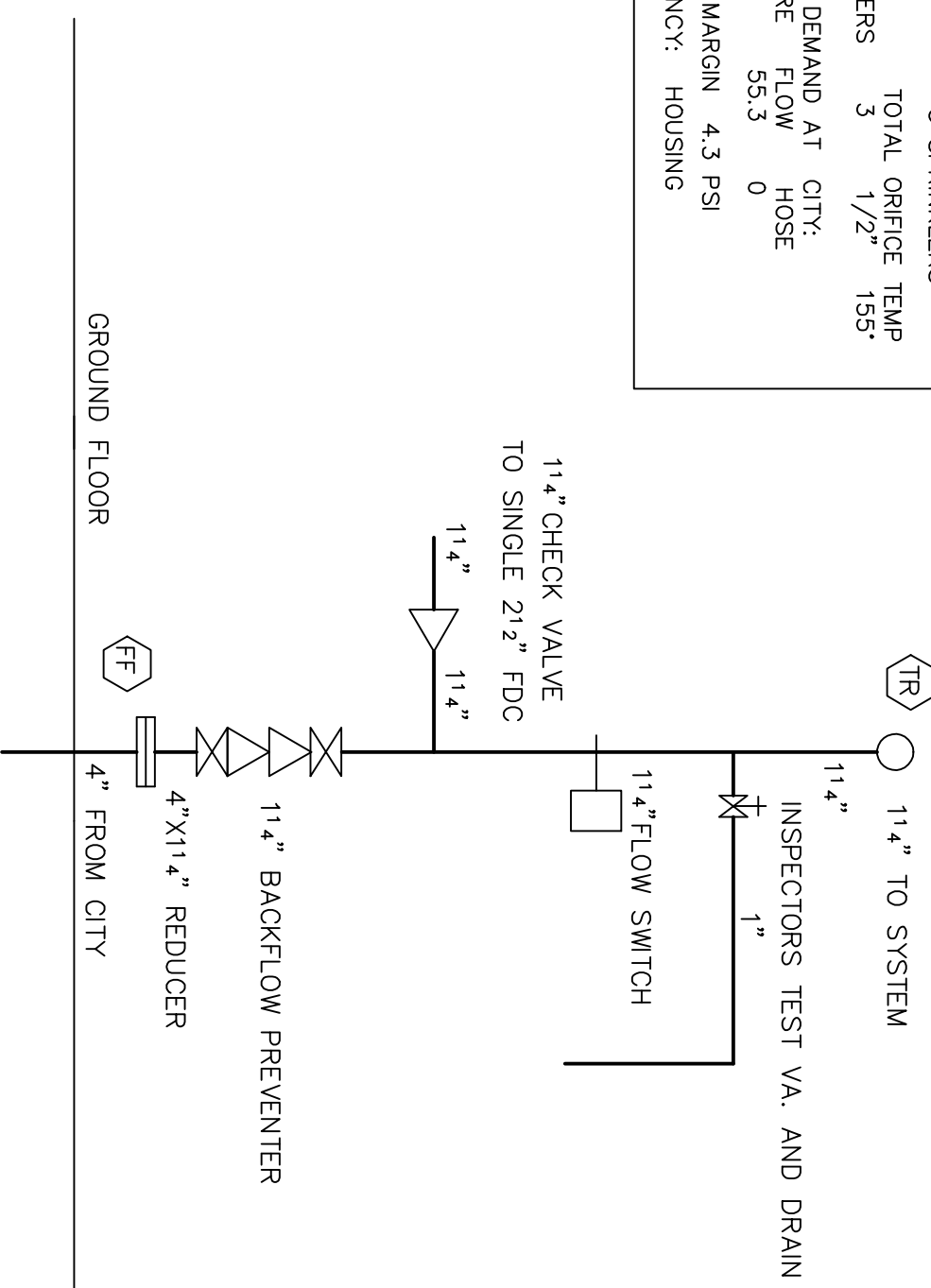
BUILDING A SECOND FLOOR

CALC ADAMS SCHOOL
BUILDING A FIRST FLOOR CENTER W/F
HYDRAULIC DATA:
BASIS OF DESIGN: NFPA 13R
DESIGN AREA: 3 CONDUIT
DENSITY: 0.05
TOTAL OFFICE TEMP
SPRINKLERS 2 1/2" 155°
SYSTEM DEMAND AT CITY:
PRESSURE: 41.18
FLOW HOSE
41.18
SAFETY MARGIN: 2.25 PSI
OCCUPANCY: HOUSING

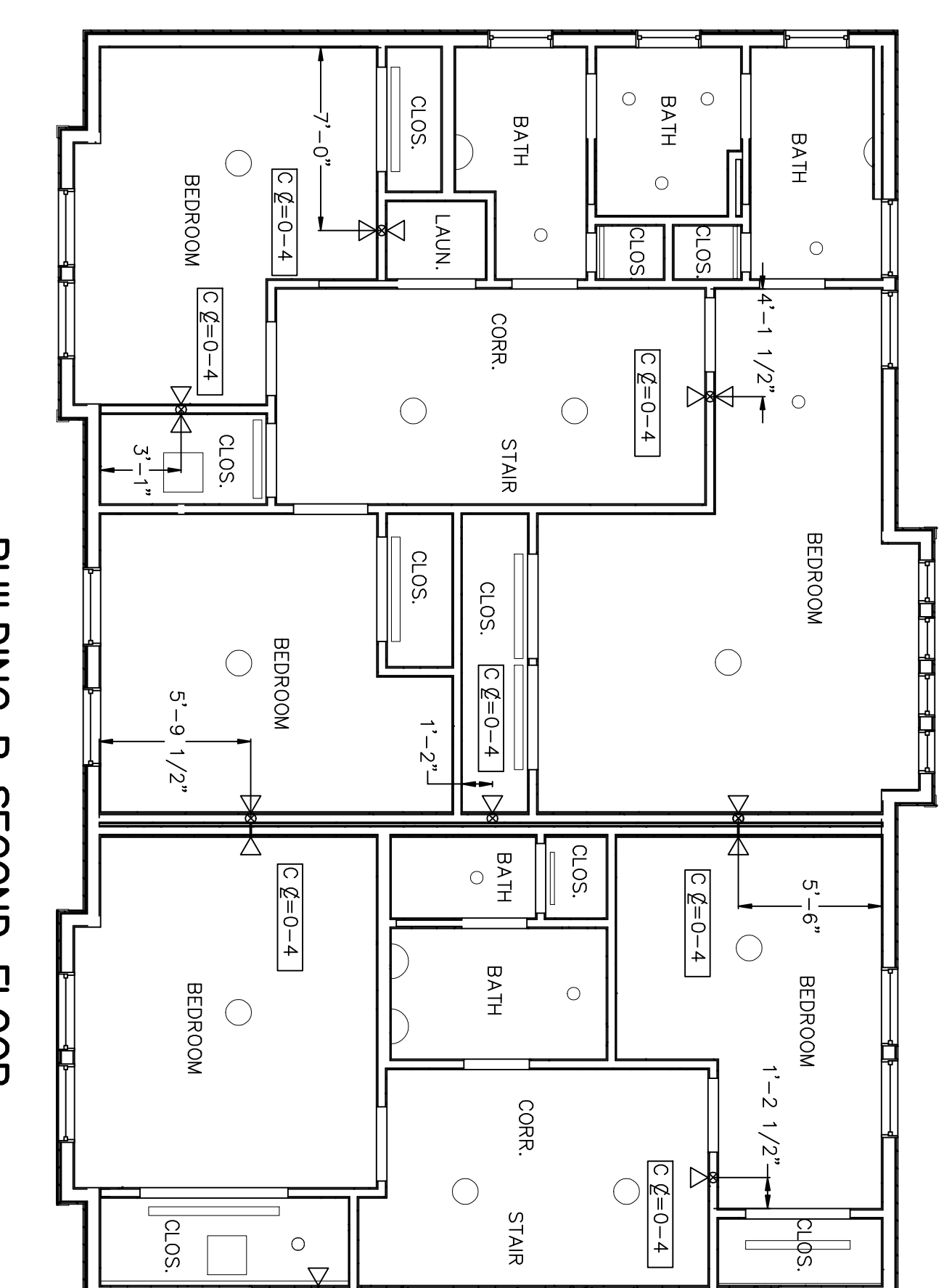


BUILDING A FIRST FLOOR CENTER W/F

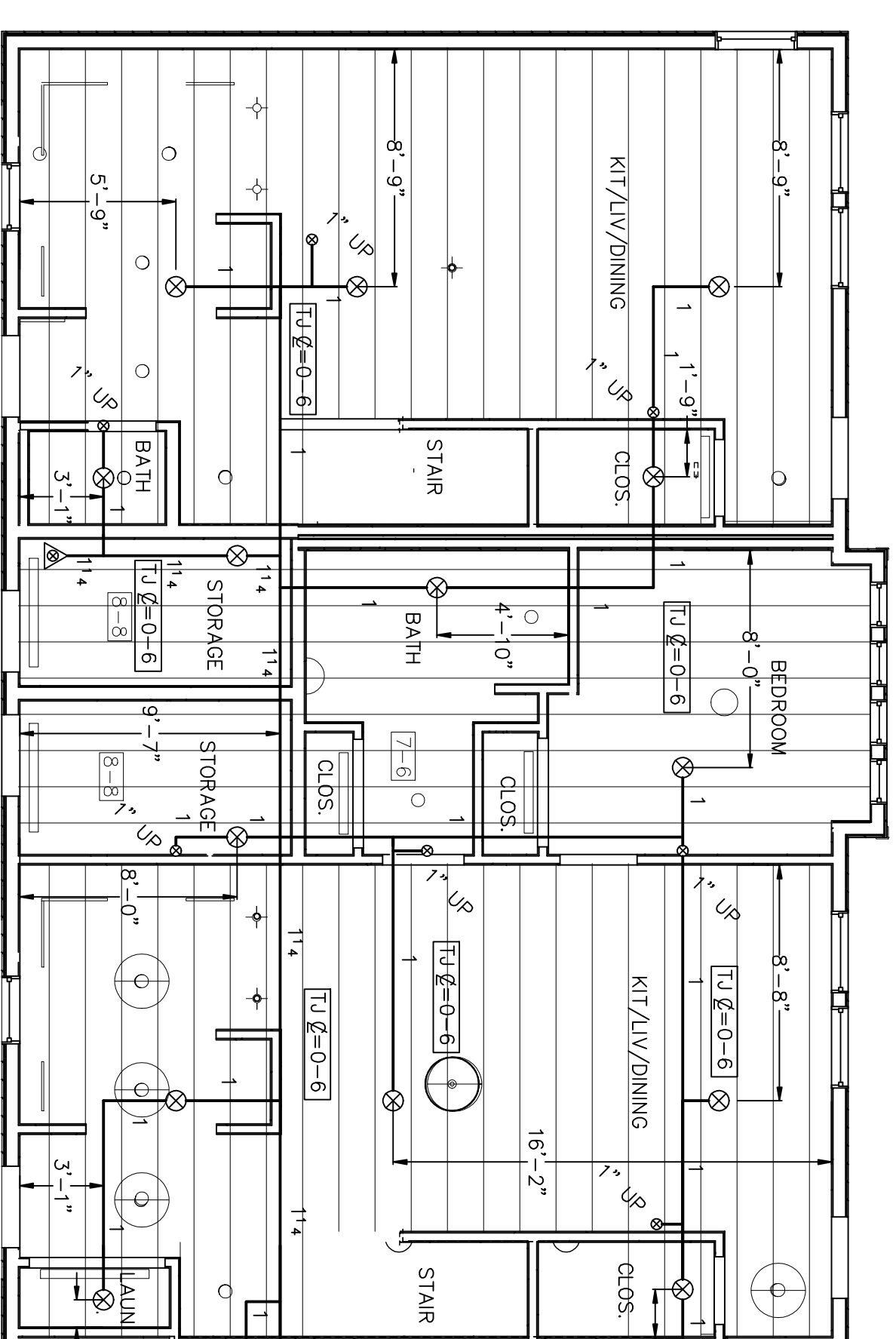
CALC ADAMS SCHOOL
BUILDING A FIRST FLOOR CENTER W/F
HYDRAULIC DATA:
BASIS OF DESIGN: NFPA 13R
DESIGN AREA: 3 CONDUIT
DENSITY: 0.05
TOTAL OFFICE TEMP
SPRINKLERS 3 1/2" 155°
SYSTEM DEMAND AT CITY:
PRESSURE: 55.3
FLOW HOSE
38.6
SAFETY MARGIN: 4.3 PSI
OCCUPANCY: HOUSING



RISER SECTION
NO SCALE



BUILDING B SECOND FLOOR



BUILDING B GROUND FLOOR

- LEGEND**
- ⊗ 155° RESIDENTIAL WHITE CONCEALED PENDENT SPRINKLER VIKING WK457
 - ⊙ 155° RESIDENTIAL WHITE RECESSED HORIZONTAL SIDEWALL SPRINKLER VIKING WK 486
 - ⊠ FF & XX FIN FUR TO CENTERLINE OF PIPE
 - ⊡ TL & XX TOP OF JOIST TO CENTERLINE OF PIPE
 - ⊢ C & XX FINISHED CEILING TO CENTERLINE OF PIPE
 - RISE OR DROP NIPPLE
 - ⊕ RISE OR DROP BETWEEN FLOORS
 - ⊖ HYDRAULIC REFERENCE POINT
 - ⊗ X-X CEILING HEIGHT

SYSTEM CLASSIFICATION

INSTALL A NEW NET PIPE NFPA #13R HYDRAULICALLY CALCULATED
SPRINKLER SYSTEM ON THE GROUND FLOOR AND SECOND FLOOR OF BUILDINGS A, B, C, AND D
SYSTEM TO MEET THE STANDARDS OF NFPA, THE STATE OF MAINE, AND THE CITY OF PORTLAND.

GENERAL NOTES

ALL DIMENSIONS ARE CENTER TO CENTER U/N
ALL 2" AND SMALLER PIPE TO SCH 40 BLACK STEEL
ALL 2" AND SMALLER FITTINGS SHALL BE SCREWED STD. W/T. C.I. BLACK U/N
ALL HANGER SPACING AND SIZES TO CONFORM TO NFPA #13.

- ⊙ 44 VIKING FREEDOM RESIDENTIAL
- ⊙ 155° WHITE RECESSED HORIZONTAL SIDEWALL SPRINKLER
- ⊙ 44 WHITE CONCEALED PENDENT SPRINKLER
- ⊙ 155° VIKING FREEDOM RESIDENTIAL

DEAN & ALLYN, INC.
FIRE PROTECTION - SPECIAL HAZARD
PO BOX 709 GRAY MAINE 04039
(207)657-5646 FAX:(207)557-5647

BUILDINGS A AND B

NO. OF REVISIONS	DATE	BY	DESCRIPTION
88	11-1-12	HAK	DRAWN BY
XX		DAS	CHECKED BY
XX		AT DEAN & ALLYN, INC	SCALE 3/16"=1'-0"
XX			SHEET NO. 1 OF 2

ADAMS SCHOOL REDEVELOPMENT
VESPER STREET
PORTLAND, MAINE

C121102