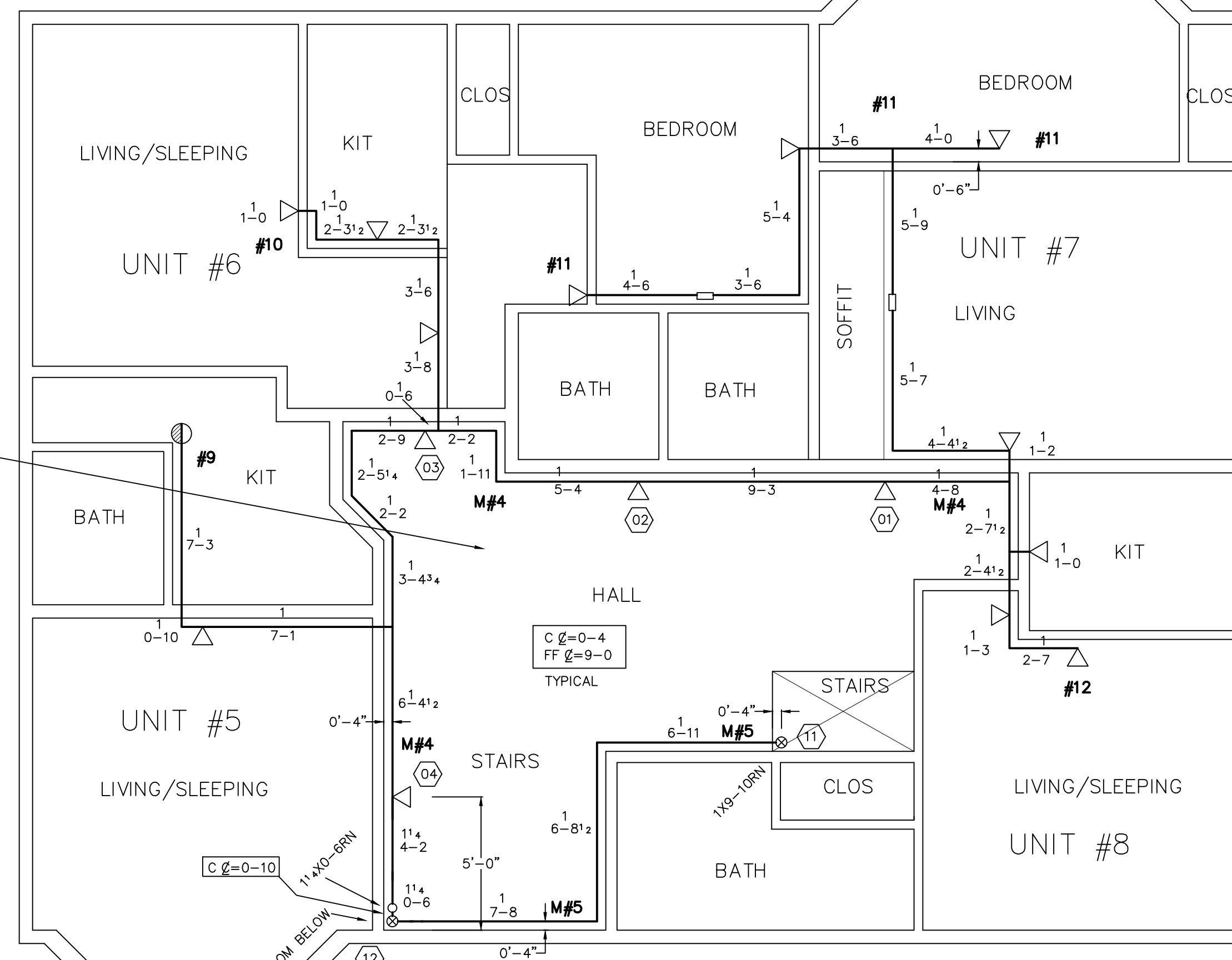
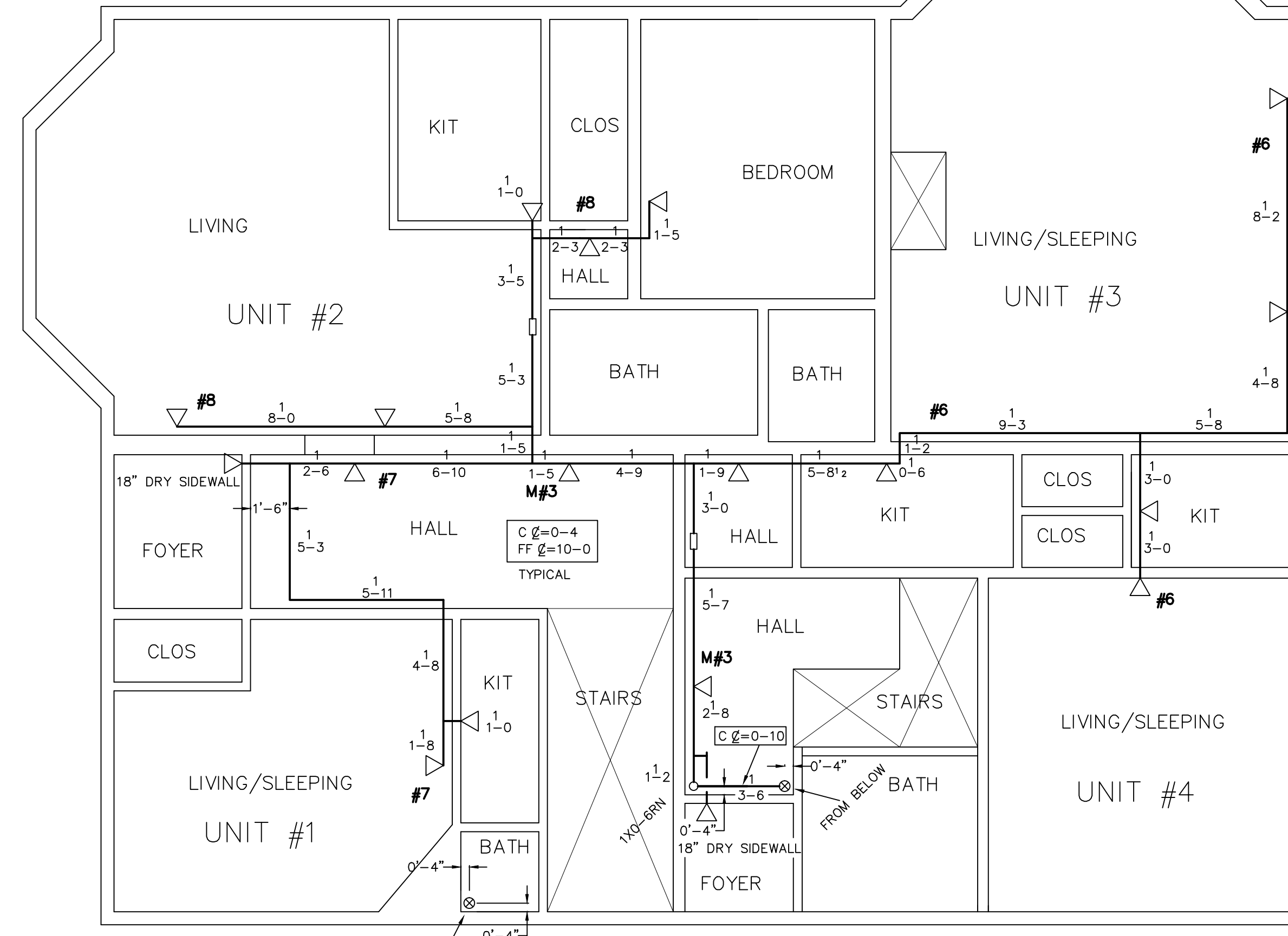


THIRD FLOOR

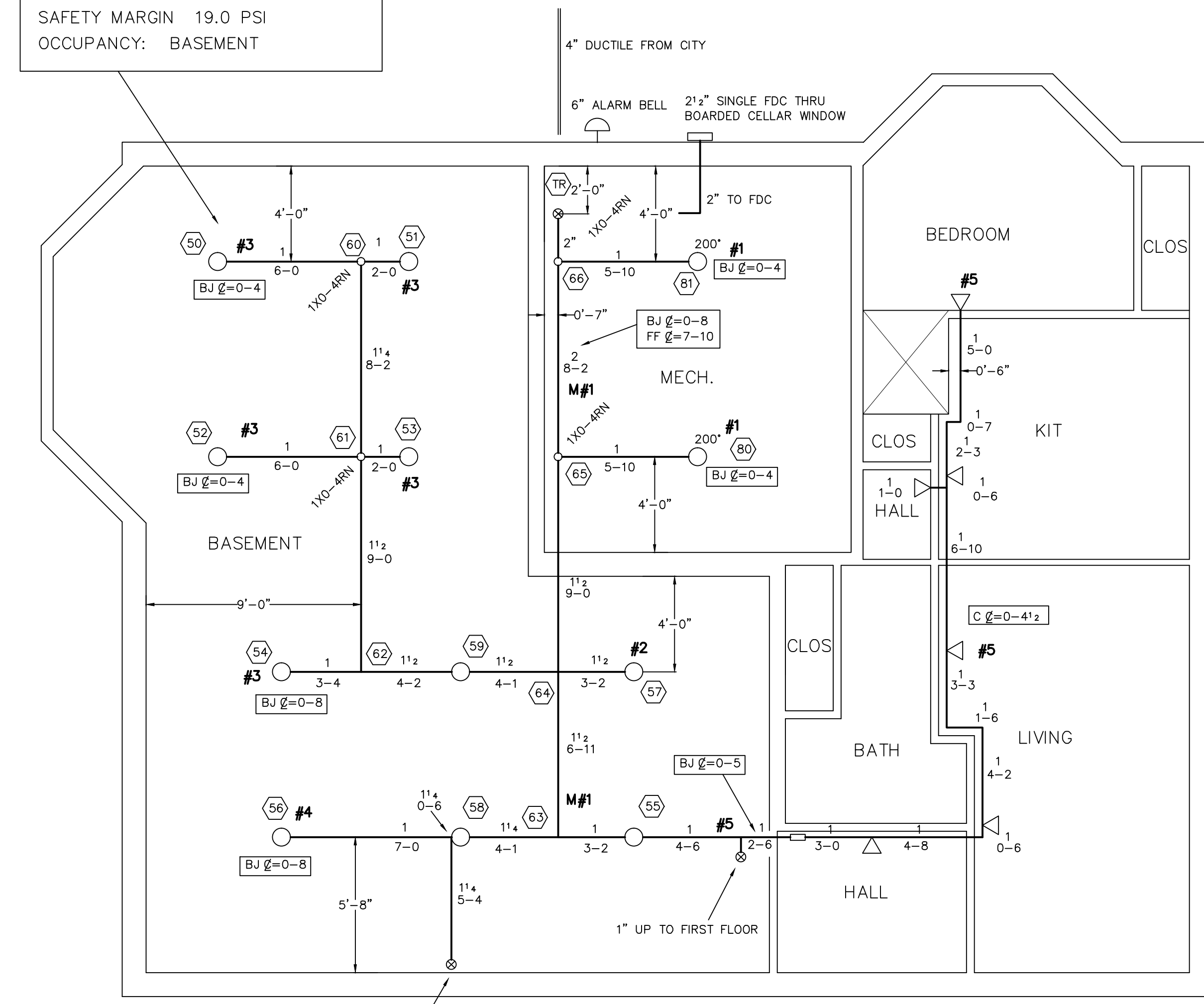


SECOND FLOOR

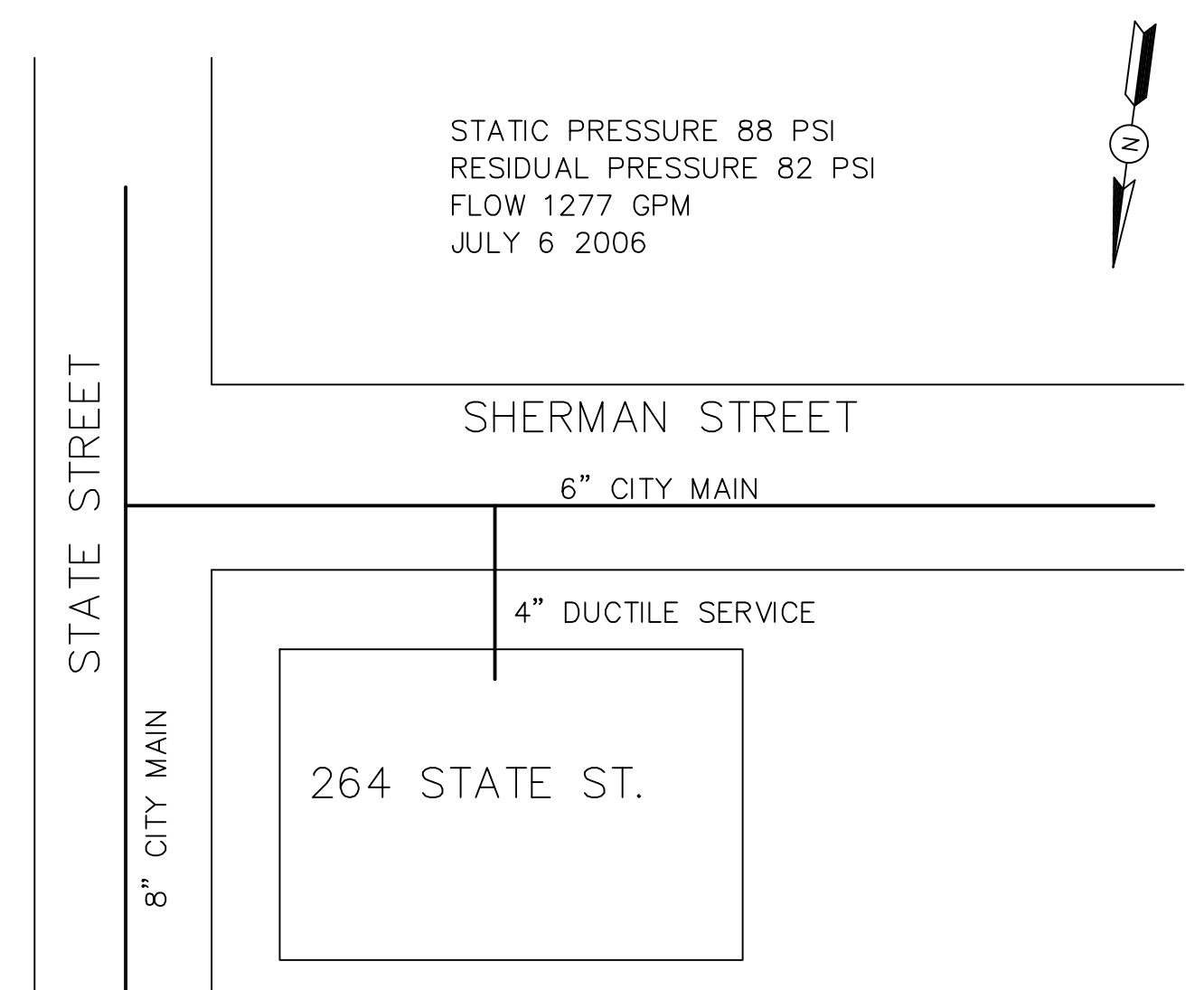


FIRST FLOOR

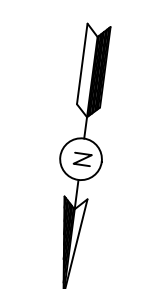
CALC 264 STATE.WXF  
 HYDRAULIC DATA:  
 BASIS OF DESIGN: NFPA 13  
 DENSITY AREA OF COVERAGE 0.15  
 ENTIRE  
 SPRINKLERS TOTAL ORIFICE TEMP  
 12 1/2" 155"  
 SYSTEM DEMAND AT CITY:  
 PRESSURE FLOW HOSE  
 67.7 294.8 250  
 SAFETY MARGIN 19.0 PSI  
 OCCUPANCY: BASEMENT



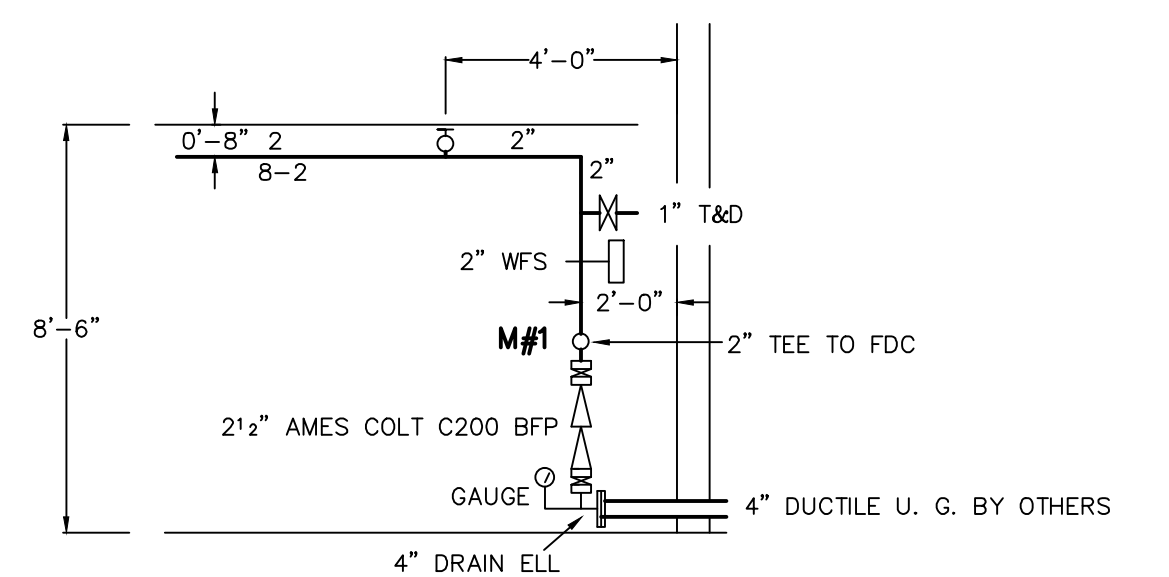
BASEMENT



STATIC PRESSURE 88 PSI  
 RESIDUAL PRESSURE 82 PSI  
 FLOW 1277 GPM  
 JULY 6 2006



CALC 264 STATE SECOND FLOOR.WXF  
 HYDRAULIC DATA:  
 BASIS OF DESIGN: NFPA 13R  
 DENSITY AREA OF COVERAGE 0.05  
 4 SPRINKLERS  
 TOTAL ORIFICE TEMP  
 1/2" 155"  
 SYSTEM DEMAND AT CITY:  
 PRESSURE FLOW HOSE  
 67.8 62.5 0  
 SAFETY MARGIN 20.1 PSI  
 OCCUPANCY: APARTMENTS CORRIDOR



BASEMENT RISER SECTION

GENERAL NOTES

- ALL DIMENSIONS ARE CENTER TO CENTER U/N
- ALL 2" AND SMALLER PIPE TO SCH 40 BLACK STEEL
- ALL SCREWED FITTINGS TO BE STD. WT. C.I. BLACK U/N
- ALL PIPING RUNS 4" FROM WALLS UNLESS NOTED

LEGEND

- ▷ 53-155' VIKING RES. WHITE HORIZONTAL SIDEWALLS
- 10-155' VIKING Q R BRASS UPRIGHTS
- 200' 2-200' VIKING Q R BRASS UPRIGHTS
- 1-155' VIKING RES. BRASS PENDENT
- ▷ 2-155' VIKING Q R WHITE HORIZONTAL DRY SIDEWALLS
- FF = XX FIN FLR TO CENTERLINE OF PIPE
- BJ = XX BOTTOM OF JOISTS TO CENTERLINE OF PIPE
- C = XX CEILING TO CENTERLINE OF PIPE
- RISE OR DROP NIPPLE
- RISER BETWEEN FLOORS
- T&D TEST AND DRAIN

SYSTEM CLASSIFICATION

A WET PIPE NFPA #13R  
 SPRINKLER SYSTEM TO BE INSTALLED IN ALL  
 AREAS OF THE BUILDING TO MEET NFPA,  
 STATE, AND CITY OF PORTLAND CODES.

- ▷ 53 VIKING VK486 RESIDENTIAL
- ▷ 155' WHITE HORIZONTAL SIDEWALLS  
1/2"x1/2" K=4.0
- 10 VIKING MICROFAST
- 155' BRASS Q R UPRIGHTS  
1/2"x1/2" K=5.6
- 2 VIKING MICROFAST
- 200' BRASS Q R UPRIGHTS  
1/2"x1/2" K=5.6
- 1 VIKING FREEDOM
- 155' BRASS RESIDENTIAL SPRINKLER  
1/2"x1/2" K=5.6
- ▷ 2 VIKING Q R
- ▷ 155' WHITE HORIZONTAL DRY SIDEWALLS  
1/2"x1/2" K=5.6

REVISIONS	DATE	APPROVED BY	TITLE

DEAN & ALLYN, INC.  
 FIRE PROTECTION • SPECIAL HAZARD  
 PO BOX 709, GRAY, MAINE 04039  
 (207)657-5646 FAX: (207)657-5647

MIKE SCANNEL  
 264 STATE STREET  
 PORTLAND, MAINE

NO OF SPRINKLERS SHOWN ON THIS SHEET	68
NO OF SPRINKLERS ON JOB	68
CONTRACT NO.	C121119