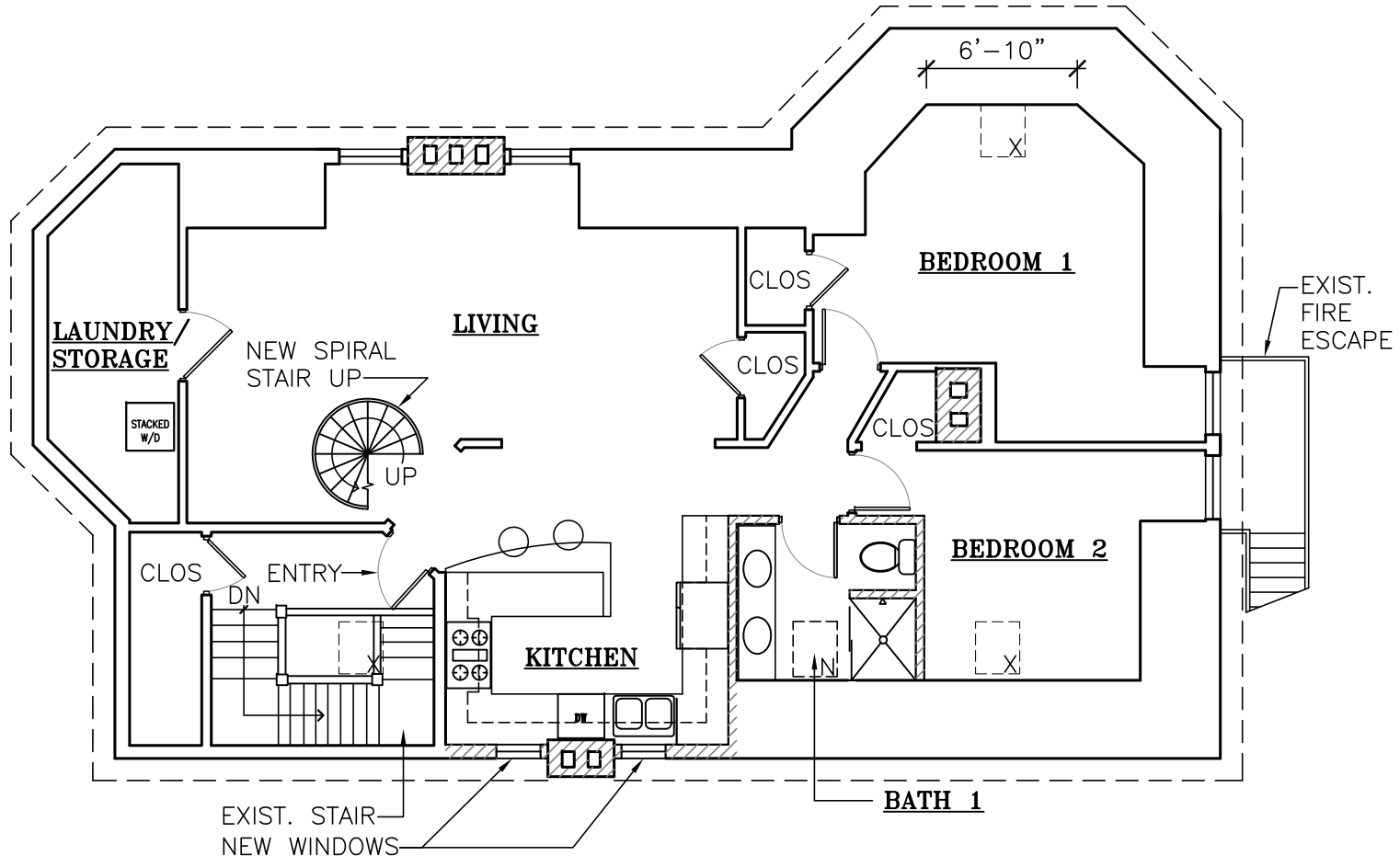


ALPHAarchitects
 17 CHESTNUT STREET
 PORTLAND, ME 04101
 PHONE: 207.761.9500
 FAX: 207.761.9595
 design@alphaarchitects.com

© COPYRIGHT
 Reuse or reproduction of the
 contents of this document is not
 permitted without written permission
 of ALPHA ARCHITECTS

PRELIMINARY
NOT FOR
CONSTRUCTION



PROPOSED THIRD FLOOR PLAN - C
 SCALE: 1/8" = 1'-0"

Brazell Residence
 276 State Street, Unit 3
 Portland ME 04102

JOB: 14012

ISSUE DATE	
PRELIM.	1-7-15
REV 1	-
CD's	-
PRINT	02-12-15

PROPOSED THIRD
 FLOOR PLAN
A-2