

ALPHAarchitects
17 CHESTNUT STREET
PORTLAND, ME 04101
PHONE: 207.761.9500
FAX: 207.761.9595
design@alphaarchitects.com

COPYRIGHT
Reuse or reproduction of the
contents of this document is not
permitted without written permission
of ALPHA ARCHITECTS

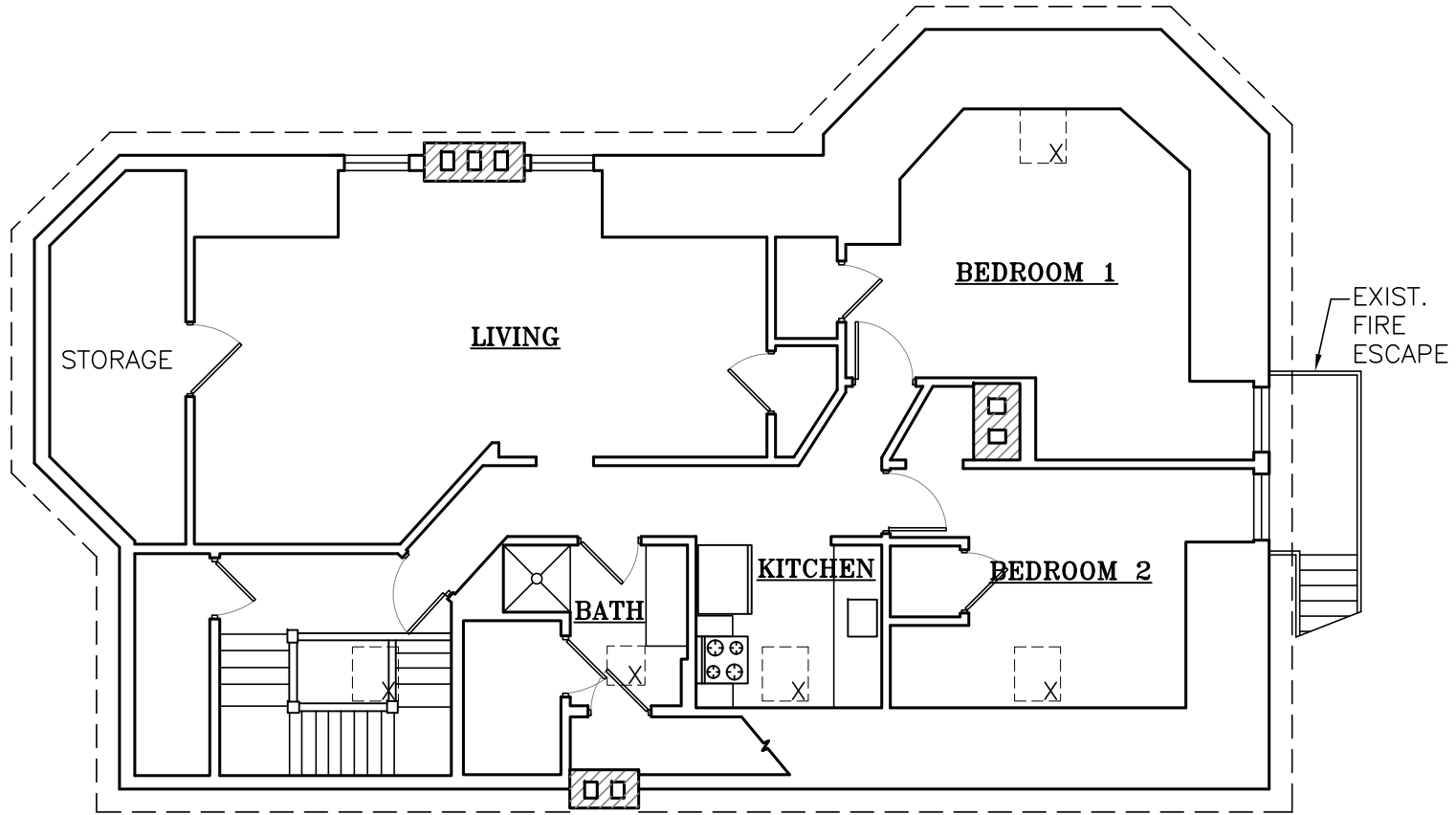
**PRELIMINARY
NOT FOR
CONSTRUCTION**

Brazell Residence
276 State Street, Unit 3
Portland ME 04102

JOB: 14012

ISSUE DATE	
PRELIM.	1-7-15
REV 1	-
CD's	-
PRINT	02-12-15

EXISTING THIRD
FLOOR PLAN
A-1



EXISTING THIRD FLOOR PLAN
SCALE: 1/8" = 1'-0"

02-12-15